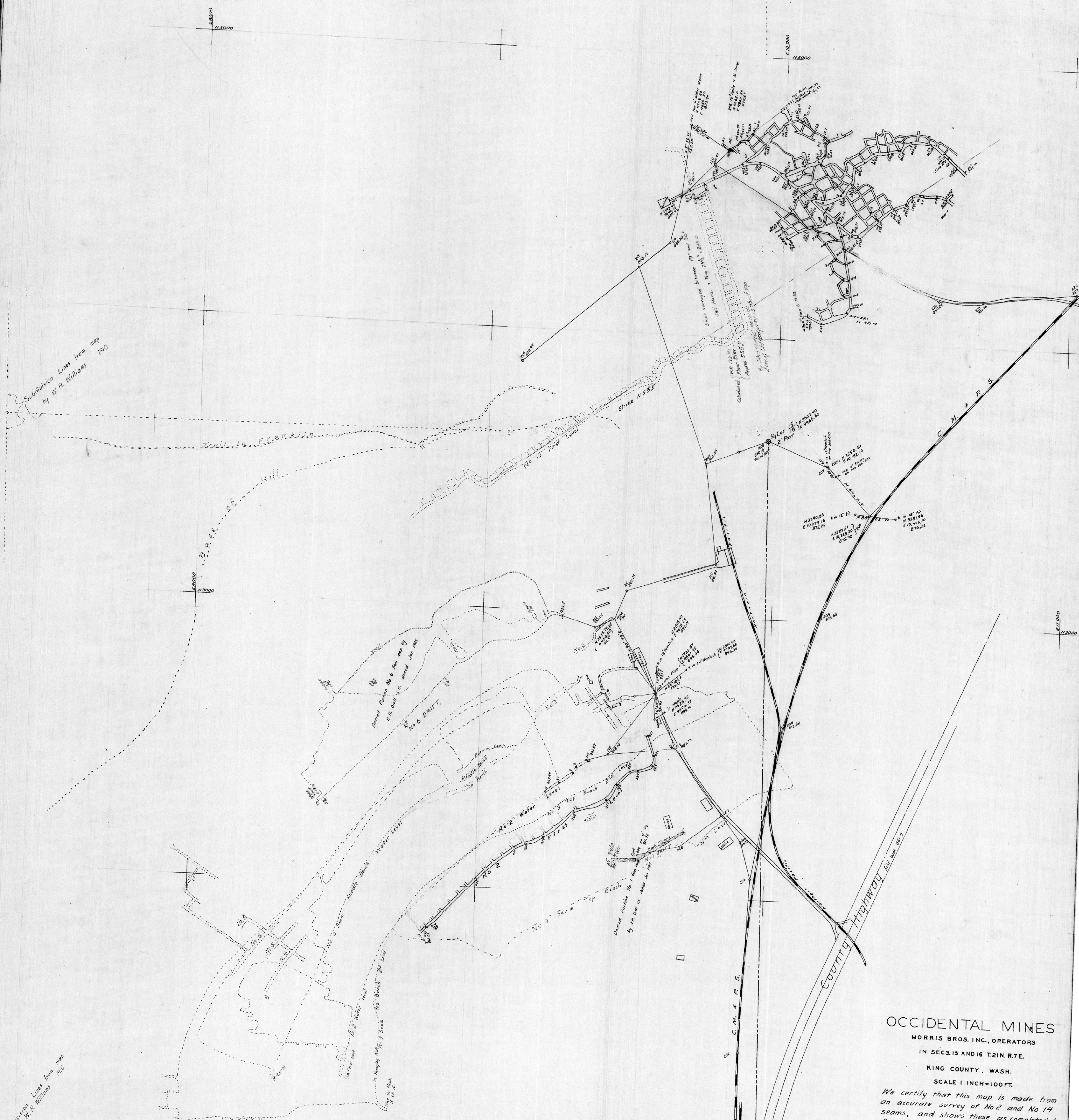


Sec 9 Sec 10
 Sec 16 Sec 15



OCCIDENTAL MINES

MORRIS BROS. INC., OPERATORS
 IN SECS. 15 AND 16 T.21N. R.7E.
 KING COUNTY, WASH.

SCALE 1 INCH = 100 FT.
 We certify that this map is made from
 an accurate survey of No. 2 and No. 14
 seams, and shows these as completed to
 Apr. 1932

A. Hitchings
 Civil & Mining Engrs

Note - Dotted lines are copied from
 older maps by other engineers.
 Broken lines indicate old workings
 surveyed by us.

Sec 16 Sec 15
 Sec 21 Sec 22

Subdivision Lines from map
 by W. R. Williams 1910

Subdivision Lines from map
 by W. R. Williams 1910

