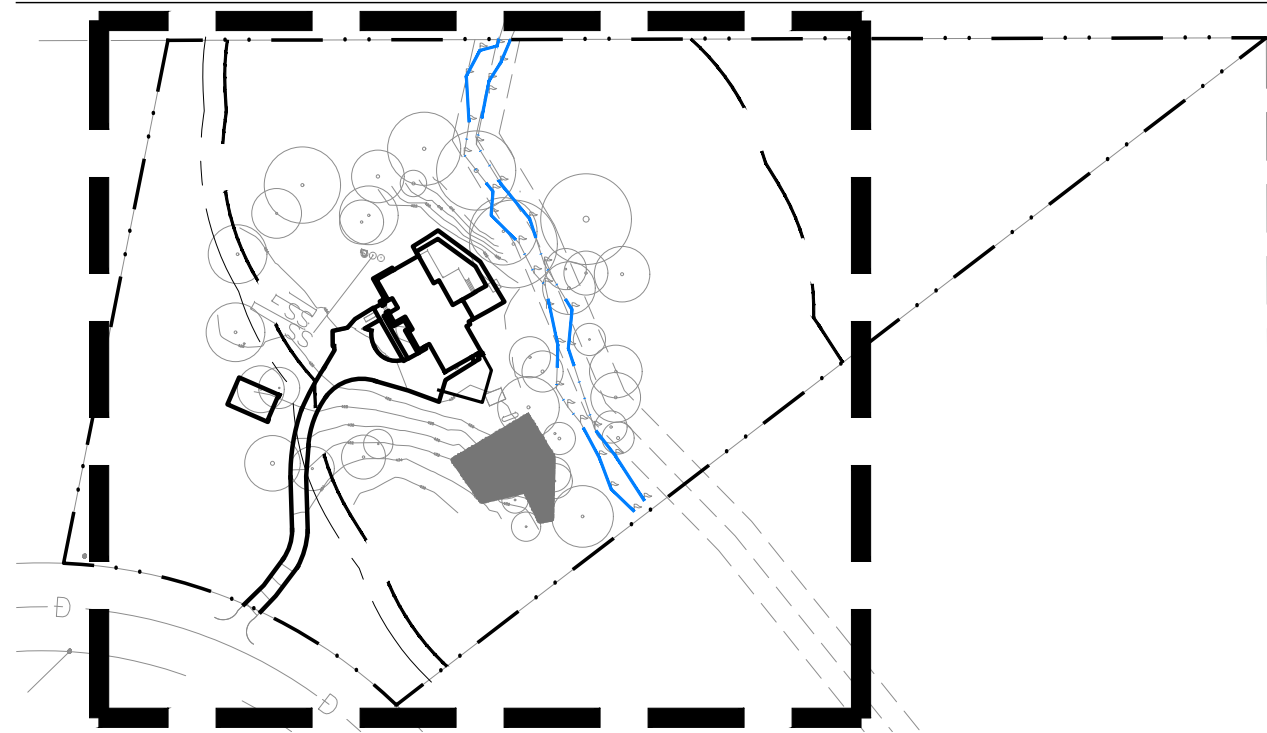
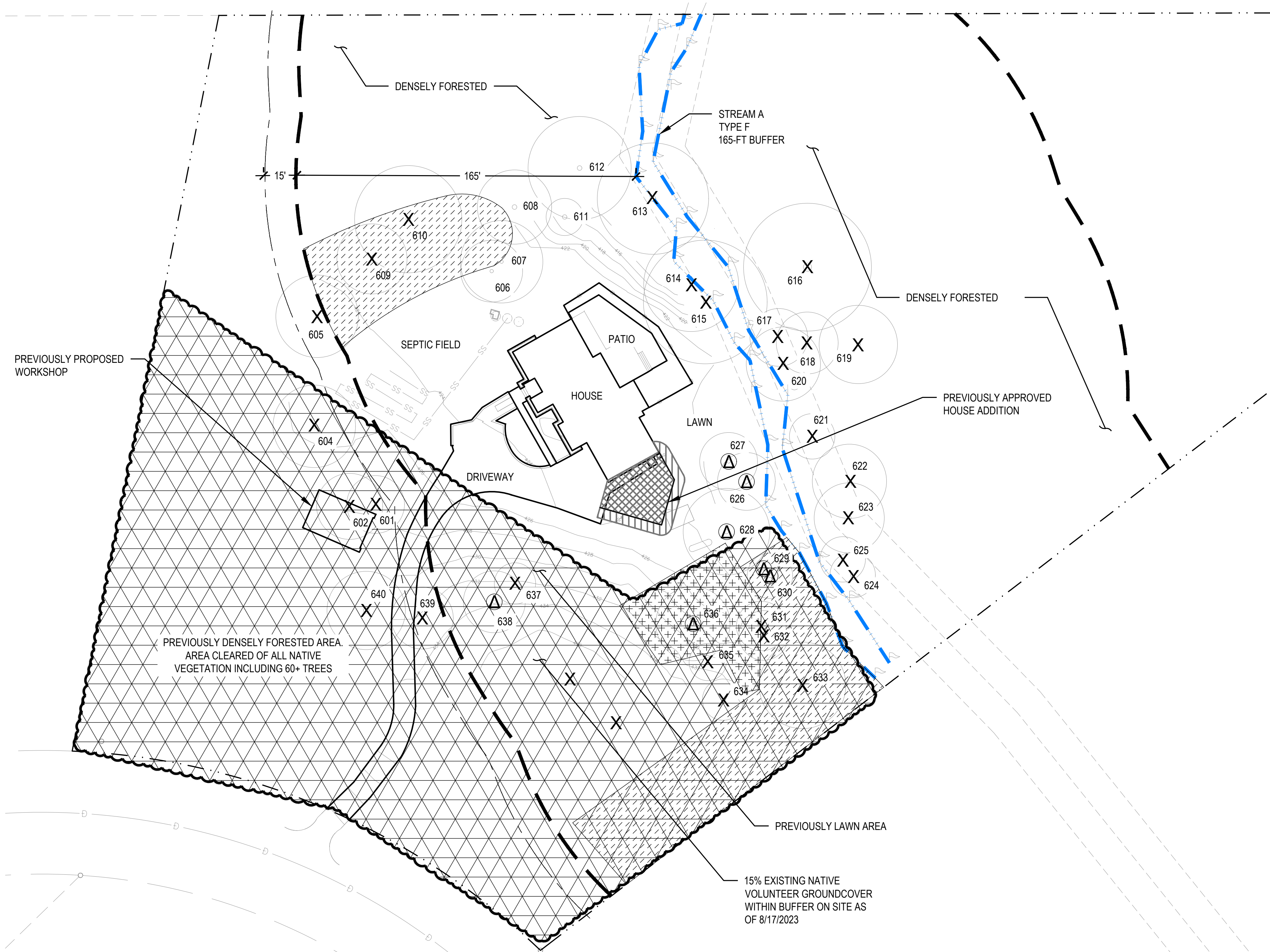


KEY MAP



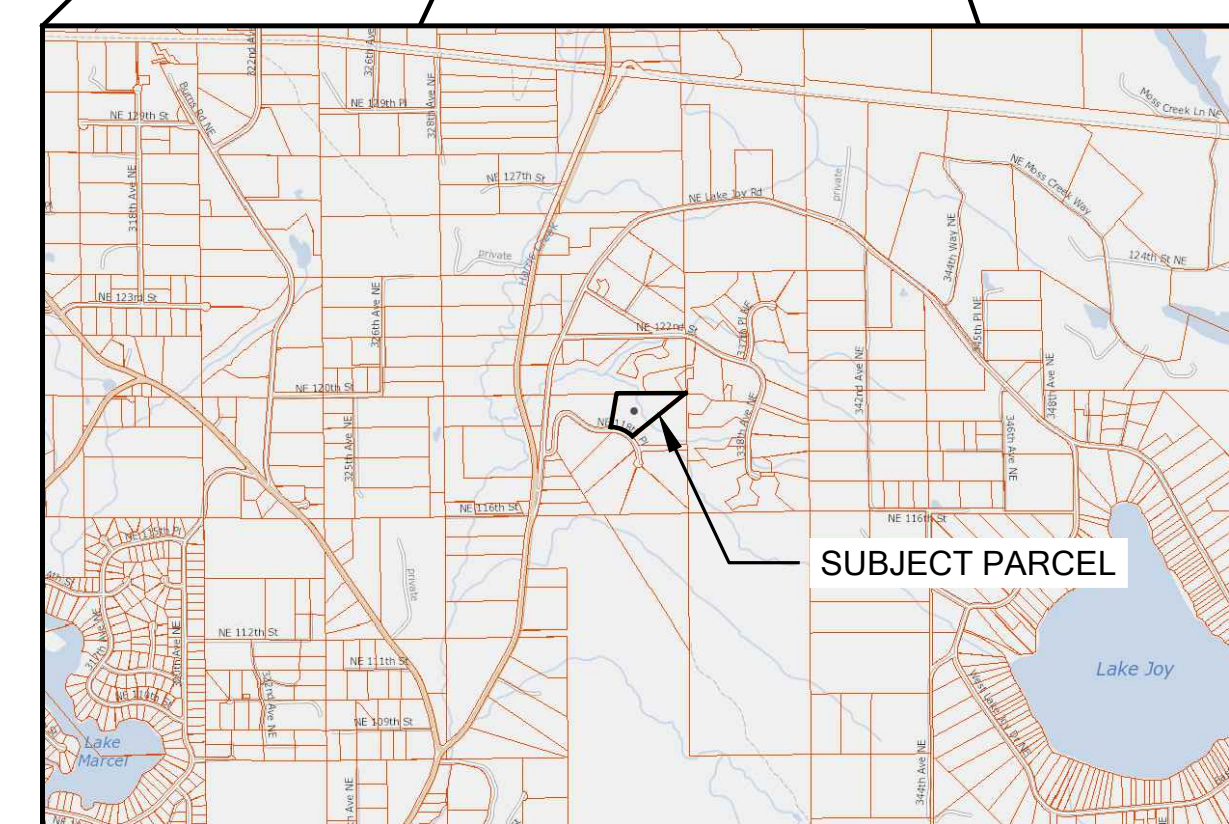
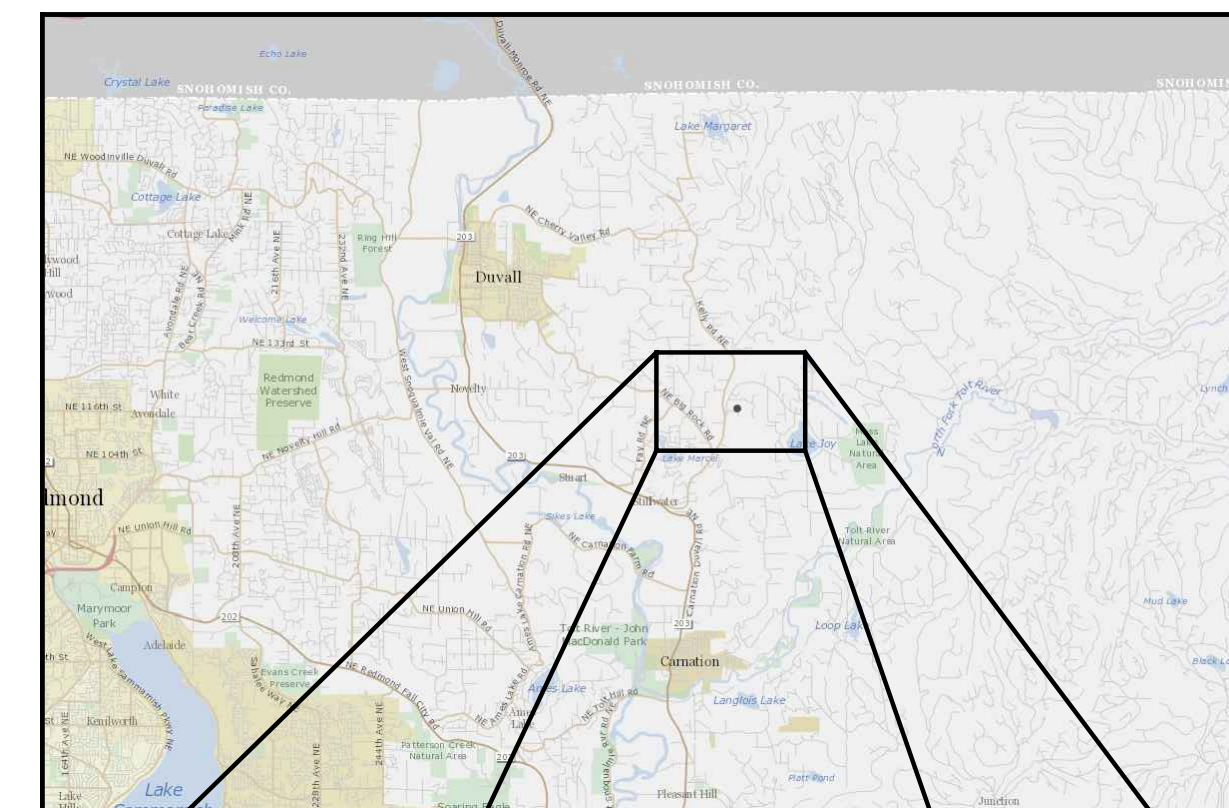
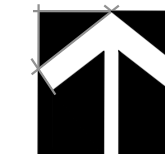
SHEET INDEX

- L1 EXISTING CONDITIONS AND IMPACTS
- L2 RESTORATION PLAN
- L3 PLANT INSTALLATION DETAILS AND SPECIFICATIONS
- L4 RESTORATION PLAN NOTES



EXISTING CONDITIONS AND IMPACTS

SCALE 1"=30'



VICINITY MAPS

LEGEND

- PARCEL BOUNDARY
- STREAM (DELINEATED)
- STREAM BUFFER
- BSBL
- [Cross-hatched] PREVIOUSLY APPROVED PERMANENT IMPACT (HOUSE ADDITION)
- [Vertical lines] PREVIOUSLY APPROVED TEMPORARY IMPACT (HOUSE ADDITION)
- [Circles with X] UNAPPROVED TREE AND VEGETATIVE CLEARING
- [Triangle with A] PREVIOUSLY APPROVED TREE REMOVAL (7 TOTAL)
7 TREE TOTAL
7 TREES WITHIN STREAM BUFFER
- [X] UNAPPROVED TREE REMOVAL
100 TREE TOTAL APPROX (SEE NOTE 2).
23 TREES WITHIN STREAM BUFFER APPROX.
- [Dotted pattern] PREVIOUSLY APPROVED UNDERSTORY INFILL RESTORATION AREA
- [Diagonal lines] PREVIOUSLY APPROVED INFILL TREE REPLACEMENT AREA
21 PROPOSED REPLACEMENT TREES

NOTES

1. CRITICAL AREAS DELINEATED BY DCG/WATERSHED ON AUGUST 26, 2020. SURVEY DATED 6/4/21 RECEIVED FROM TERRANE.
2. A DCG/WATERSHED CERTIFIED ARBORIST VISITED THE PROPERTY ON 6/23/2023. DURING THE VISIT, INVENTORIED TREE REMOVALS WERE DOCUMENTED. IN ADDITION, SEVERAL NON-INVENTORIED TREES WERE NOTED TO HAVE BEEN REMOVED OUTSIDE OF THE BUFFER. REFER TO TREE REMOVAL MEMO.

NO.	DATE	BY	REVISION
1	09/01/2023	AS	RESPONSE TO CITY COMMENTS

DCG WATERSHED
 750 Sixth Street South
 Kirkland, WA 98033
 P: 425.822.5242
 F: 425.827.8136
 www.dcgwatershed.com

PRELIMINARY

CALL 811
 2 BUSINESS DAYS
 BEFORE YOU DIG
(UNDERGROUND UTILITY LOCATIONS ARE APPROX.)

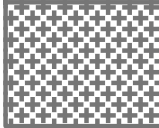

BAUGHMAN RESIDENCE RESTORATION, TREE
 AND VEGETATION CLEARING VIOLATION
 33326 NE 118TH PL
 CARNATION, WA 98014
 200812

RESTORATION PLAN

DATE: 09/01/2023
 PLAN NUMBER:
L1
 SHEET 1 OF 4

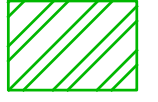





PRINCIPAL: JKB PROJECT MANAGER: DM DESIGNED BY: AS DRAWN BY: AS, LK CHECKED BY: JKB, JF

REVISED PLANT SCHEDULE FOR PREVIOUSLY APPROVED RESTORATION TO BE INSTALLED

	UNDERSTORY INFILL RESTORATION PLANTING AREA	2,766 SF @ 100% INFILL (NOTE 6)
	ACER CIRCINATUM / VINE MAPLE	20 2 GALLON MIN. 6' O.C.
	HOLODISCUS DISCOLOR / OCEAN-SPRAY	20 1 GALLON MIN. 6' O.C.
	MAHONIA AQUIFOLIUM / OREGON GRAPE	20 1 GALLON MIN. 6' O.C.
	OEMLERIA CERASIFORMIS / OSOBERRY	20 1 GALLON MIN. 6' O.C.
	RHAMNUS PURSHIANA / CASCARA	20 1 GALLON MIN. 6' O.C.
	SYMPHORICARPOS ALBUS / COMMON WHITE SNOWBERRY	20 1 GALLON MIN. 6' O.C.
	INFILL TREE REPLACEMENT	
	ACER MACROPHYLLUM / BIGLEAF MAPLE	7 2 GALLON PER PLAN
	PSEUDOTSUGA MENZIESII / DOUGLAS FIR	7 2 GALLON
	TSUGA HETEROPHYLLA / WESTERN HEMLOCK	7 2 GALLON


PLANT SCHEDULE FOR ADDITIONAL RESTORATION PLANTING AREAS TO BE INSTALLED

TREE INFILL AREA (2,620 SF)

	SITE PREPARATION AREA FOR INFILL TREE PLANTING.			
TREES	BOTANICAL / COMMON NAME	SIZE	SPACING	QTY
	ACER MACROPHYLLUM / BIG-LEAF MAPLE	2 GALLON	PER PLAN*	13
	BETULA POPYRIFERA / PAPER BIRCH	2 GALLON		13
	PSEUDOTSUGA MENZIESII / DOUGLAS-FIR	2 GALLON		13
	THUJA PLICATA / WESTERN RED CEDAR	2 GALLON		18
	TSUGA HETEROPHYLLA / WESTERN HEMLOCK	2 GALLON		21

* TREES PROPOSED WITHIN BUFFER EQUAL A RATIO OF GREATER THAN 3:1 OF TREES REMOVED (PER SHEET L1) PER KING COUNTY REQUIREMENTS.

BUFFER SHRUB AND GROUNDCOVER MIX (15,807 SF) - 15% EXISTING NATIVE GROUNDCOVERS CURRENTLY ON SITE

	ACER CIRCINATUM / VINE MAPLE*	2 GALLON	8' O.C.	38
	HOLODISCUS DISCOLOR / OCEANSPRAY	1 GALLON	6' O.C.	78
	MAHONIA AQUIFOLIUM / OREGON GRAPE	1 GALLON	6' O.C.	78
	PHYSOCARPUS CAPITATUS / PACIFIC NINEBARK*	1 GALLON	6' O.C.	78
	RIBES SANGUINEUM / RED-FLOWERING CURRANT*	1 GALLON	6' O.C.	78
	ROSA NUTKANA / NOOTKA ROSE*	1 GALLON	6' O.C.	78
	SYMPHORICARPOS ALBUS / COMMON WHITE SNOWBERRY	1 GALLON	6' O.C.	78
	HERACLEUM LANATUM / COW PARSNIP*	4" POT	4' O.C.	53
	BLECHNUM SPICANT / DEER FERN*	4" POT	4' O.C.	100
	GAULTHERIA SHALLON / SALAL	4" POT	4' O.C.	54
	LUPINUS POLYPHYLLUS / BIG-LEAF LUPINE	4" POT	4' O.C.	100
	POLYSTICHUM MUNITUM / WESTERN SWORD FERN	4" POT	4' O.C.	100
	STACHYS COOLEYAE / GREAT BETONY*	4" POT	4' O.C.	53

*SPECIES TO BE PLANTED AT STREAM'S EDGE

NATIVE TREE AND SHRUB, MIX (33,769 SF)

	ACER MACROPHYLLUM / BIG LEAF MAPLE	2 GALLON	9' O.C.	16
	PINUS MONTICOLA / WESTERN WHITE PINE	2 GALLON	9' O.C.	16
	PSEUDOTSUGA MENZIESII / DOUGLAS FIR	2 GALLON	9' O.C.	16
	THUJA PLICATA / WESTERN RED CEDAR	2 GALLON	9' O.C.	16
	TSUGA HETEROPHYLLA / WESTERN HEMLOCK	2 GALLON	9' O.C.	16
	ACER CIRCINATUM / VINE MAPLE	2 GALLON	8' O.C.	77
	MAHONIA AQUIFOLIUM / OREGON GRAPE	1 GALLON	6' O.C.	154
	PHYSOCARPUS CAPITATUS / PACIFIC NINEBARK	1 GALLON	6' O.C.	154
	RIBES SANGUINEUM / RED FLOWERING CURRANT	1 GALLON	6' O.C.	154
	ROSA GYMNOCARPA / BALDHIP ROSE	1 GALLON	6' O.C.	154
	SYMPHORICARPOS ALBUS / COMMON WHITE SNOWBERRY	1 GALLON	6' O.C.	154
	VACCINIUM OVATUM / EVERGREEN HUCKLEBERRY	1 GALLON	6' O.C.	154

PLANT SCHEDULE FOR NON-RESTORATION AREAS

LAWN MIX (5,617 SF)

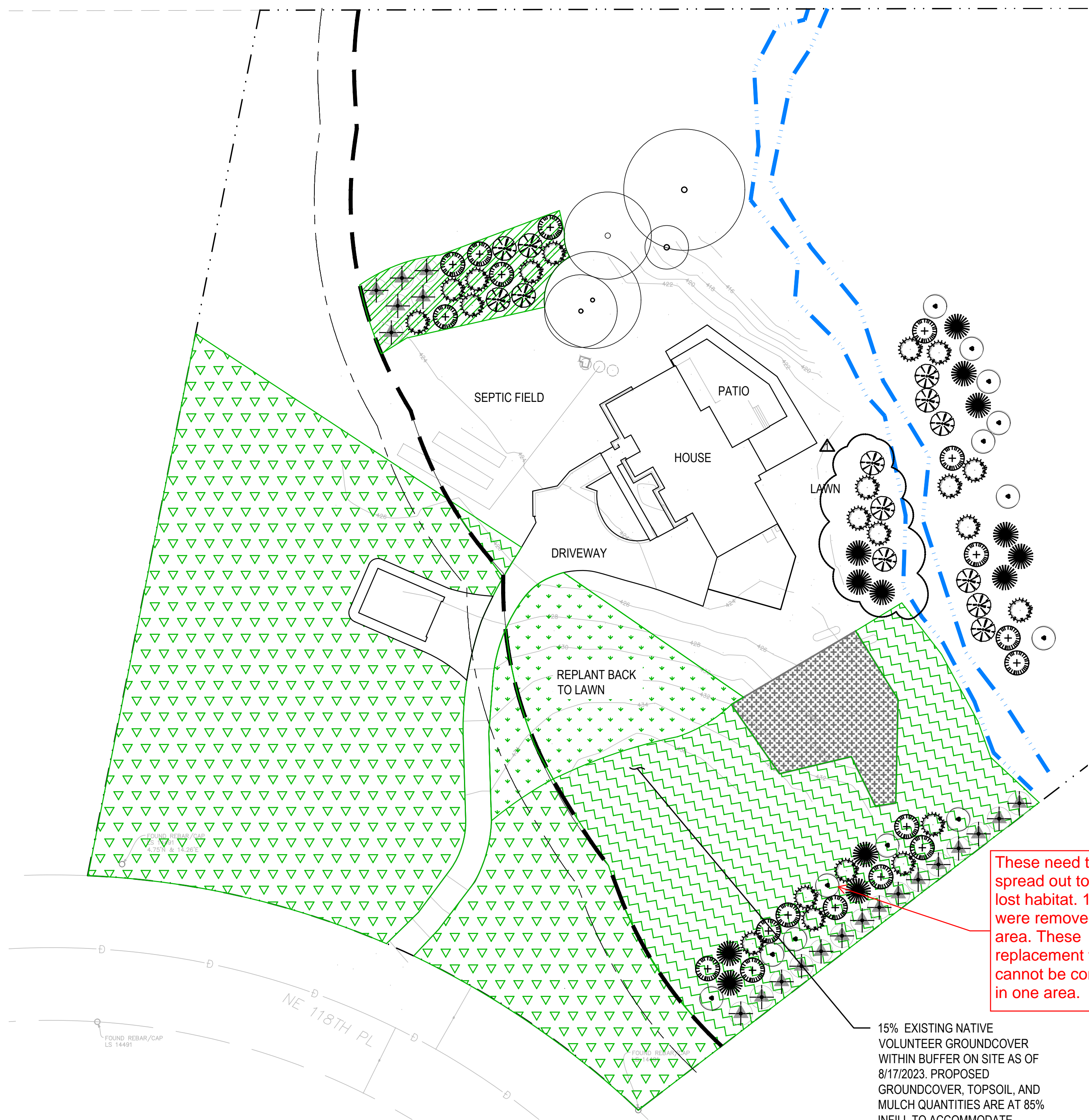
	OWNER SELECTED TO MATCH EXISTING	5,617 SF
---	----------------------------------	----------

NOTES

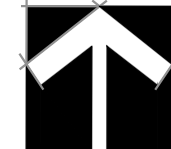
- REMOVE INVASIVE SPECIES FROM PLANTING AREAS.
- SHRUBS AND GROUNDCOVER TO BE GROUPED BY SPECIES, INSTALLED IN GROUPS OF 5-7, AND SPACED TRIANGULARLY.
- PLACEMENT OF TREES TO BE FIELD-LOCATED AT THE DIRECTION OF RESTORATION SPECIALIST. TREES TO BE SPACED AT A MINIMUM OF 9' O.C.
- PREPARE SITE IN ALL HATCHED PLANTING AREAS PER THE SOIL PREPARATION DETAIL ON SHEET L3.
- FOR TREES PROPOSED OUTSIDE OF A SITE PREPARATION AREA HATCH, AREA WITHIN 10 FEET OF EACH TREE SHALL BE CLEARED OF INVASIVE PLANTS. TREES SHALL BE INSTALLED PER CONTAINER INSTALLATION DETAIL USING HAND TOOLS AND AVOIDING ROOTS OF EXISTING VEGETATION. AN 18" RADIUS WOOD CHIP MULCH RING AT A 3" DEPTH SHALL BE INSTALLED AT EACH TREE.
- SEE SHEET L3 FOR PLANT INSTALLATION DETAILS AND SPECIFICATIONS.
- SEE SHEET L4 FOR MITIGATION PLAN NOTES.
- ORIGINAL CALCULATIONS OF PREVIOUSLY APPROVED PLANT QUANTITIES WERE UPDATED FROM 75% INFILL TO 100% INFILL DUE TO CLEARING OF PREVIOUSLY APPROVED MITIGATION AREA.
- STANDARD BMPS TO BE USED TO MARK PLANTING LIMITS, PREVENT FURTHER IMPACTS TO UNDISTURBED AREAS, AND PREVENT DISTURBED SOILS FROM ENTERING THE STREAM.
- FLOAT CONTROL BMPS WILL BE PLACED PER THEIR DESCRIPTION IN THE CSWPPP (CONSTRUCTION STORMWATER POLLUTION PREVENTION PLAN).
- ALL AREAS WITH NEW PLANTS (EXCLUDING THE LAWN MIX) SHALL HAVE TEMPORARY IRRIGATION, SEE MITIGATION PLAN NOTES ON SHEET L4.
- DO NOT PLANT WITHIN THE SEPTIC RESERVE FIELD.

These need to be spread out to re-create lost habitat. 12 trees were removed within this area. These replacement trees cannot be concentrated in one area.

15% EXISTING NATIVE VOLUNTEER GROUNDCOVER WITHIN BUFFER ON SITE AS OF 8/17/2023. PROPOSED GROUNDCOVER, TOPSOIL, AND MULCH QUANTITIES ARE AT 85% INFILL TO ACCOMMODATE VOLUNTEER GROUNDCOVER.



RESTORATION PLAN
SCALE 1" = 30'



PRINCIPAL: JKB PROJECT MANAGER: DM DESIGNED BY: AS DRAWN BY: AS, LK CHECKED BY: JKB, JF

DIG WATERSHED
750 Sixth Street South
Kirkland, WA 98033
P: 425.822.5242
F: 425.827.8136
www.digwatershed.com

PRELIMINARY

CALL 811
2 BUSINESS DAYS
BEFORE YOU DIG
(UNDERGROUND UTILITY LOCATIONS ARE APPROX.)

BAUGHMAN RESIDENCE RESTORATION, TREE AND VEGETATION CLEARING VIOLATION
33326 NE 118TH PL
CARNATION, WA 98014
200812

RESTORATION PLAN

DATE: 09/01/2023
PLAN NUMBER:
L2
SHEET 2 OF 4

PLANT INSTALLATION SPECIFICATIONS

GENERAL NOTES

QUALITY ASSURANCE

- PLANTS SHALL MEET OR EXCEED THE SPECIFICATIONS OF FEDERAL, STATE, AND LOCAL LAWS REQUIRING INSPECTION FOR PLANT DISEASE AND INSECT CONTROL.
- PLANTS SHALL BE HEALTHY, VIGOROUS, AND WELL-FORMED, WITH WELL DEVELOPED, FIBROUS ROOT SYSTEMS, FREE FROM DEAD BRANCHES OR ROOTS. PLANTS SHALL BE FREE FROM DAMAGE CAUSED BY TEMPERATURE EXTREMES, LACK OR EXCESS OF MOISTURE, INSECTS, DISEASE, AND MECHANICAL INJURY. PLANTS IN LEAF SHALL BE WELL FOLIATED AND OF GOOD COLOR. PLANTS SHALL BE HABITUATED TO THE OUTDOOR ENVIRONMENTAL CONDITIONS INTO WHICH THEY WILL BE PLANTED (HARDENED-OFF).
- TREES WITH DAMAGED, CROOKED, MULTIPLE OR BROKEN LEADERS WILL BE REJECTED. WOODY PLANTS WITH ABRASIONS OF THE BARK OR SUN SCALD WILL BE REJECTED.
- NOMENCLATURE: PLANT NAMES SHALL CONFORM TO FLORA OF THE PACIFIC NORTHWEST BY HITCHCOCK AND CRONQUIST, UNIVERSITY OF WASHINGTON PRESS, 2018 AND/OR TO A FIELD GUIDE TO THE COMMON WETLAND PLANTS OF WESTERN WASHINGTON & NORTHWESTERN OREGON, ED. SARAH SPEAR COOKE, SEATTLE AUDUBON SOCIETY, 1997.

DEFINITIONS

- PLANTS/PLANT MATERIALS. PLANTS AND PLANT MATERIALS SHALL INCLUDE ANY LIVE PLANT MATERIAL USED ON THE PROJECT. THIS INCLUDES BUT IS NOT LIMITED TO CONTAINER GROWN, B&B OR BAREROOT PLANTS; LIVE STAKES AND FASCINES (WATTLES); TUBERS, CORMS, BULBS, ETC.; SPRIGS, PLUGS, AND LINERS.
- CONTAINER GROWN. CONTAINER GROWN PLANTS ARE THOSE WHOSE ROOTBALLS ARE ENCLOSED IN A POT OR BAG IN WHICH THAT PLANT GREW.

SUBSTITUTIONS

- IT IS THE CONTRACTOR'S RESPONSIBILITY TO OBTAIN SPECIFIED MATERIALS IN ADVANCE IF SPECIAL GROWING, MARKETING OR OTHER ARRANGEMENTS MUST BE MADE IN ORDER TO SUPPLY SPECIFIED MATERIALS.
- SUBSTITUTION OF PLANT MATERIALS NOT ON THE PROJECT LIST WILL NOT BE PERMITTED UNLESS AUTHORIZED IN WRITING BY THE RESTORATION CONSULTANT.
- IF PROOF IS SUBMITTED THAT ANY PLANT MATERIAL SPECIFIED IS NOT OBTAINABLE, A PROPOSAL WILL BE CONSIDERED FOR USE OF THE NEAREST EQUIVALENT SIZE OR ALTERNATIVE SPECIES, WITH CORRESPONDING ADJUSTMENT OF CONTRACT PRICE.
- SUCH PROOF WILL BE SUBSTANTIATED AND SUBMITTED IN WRITING TO THE CONSULTANT AT LEAST 30 DAYS PRIOR TO START OF WORK UNDER THIS SECTION.

INSPECTION

- PLANTS SHALL BE SUBJECT TO INSPECTION AND APPROVAL BY THE RESTORATION CONSULTANT FOR CONFORMANCE TO SPECIFICATIONS, EITHER AT TIME OF DELIVERY ON-SITE OR AT THE GROWER'S NURSERY. APPROVAL OF PLANT MATERIALS AT ANY TIME SHALL NOT IMPAIR THE SUBSEQUENT RIGHT OF INSPECTION AND REJECTION DURING PROGRESS OF THE WORK.
- PLANTS INSPECTED ON SITE AND REJECTED FOR NOT MEETING SPECIFICATIONS MUST BE REMOVED IMMEDIATELY FROM SITE OR RED-TAGGED AND REMOVED AS SOON AS POSSIBLE.
- THE RESTORATION CONSULTANT MAY ELECT TO INSPECT PLANT MATERIALS AT THE PLACE OF GROWTH. AFTER INSPECTION AND ACCEPTANCE, THE RESTORATION CONSULTANT MAY REQUIRE THE INSPECTED PLANTS BE LABELED AND RESERVED FOR THE PROJECT. SUBSTITUTION OF THESE PLANTS WITH OTHER INDIVIDUALS, EVEN OF THE SAME SPECIES AND SIZE, IS UNACCEPTABLE.

MEASUREMENT OF PLANTS

- PLANTS SHALL CONFORM TO SIZES SPECIFIED UNLESS SUBSTITUTIONS ARE MADE AS OUTLINED IN THIS CONTRACT.
- HEIGHT AND SPREAD DIMENSIONS SPECIFIED REFER TO MAIN BODY OF PLANT AND NOT BRANCH OR ROOT TIP TO TIP. PLANT DIMENSIONS SHALL BE MEASURED WHEN THEIR BRANCHES OR ROOTS ARE IN THEIR NORMAL POSITION.
- WHERE A RANGE OF SIZE IS GIVEN, NO PLANT SHALL BE LESS THAN THE MINIMUM SIZE AND AT LEAST 50% OF THE PLANTS SHALL BE AS LARGE AS THE MEDIAN OF THE SIZE RANGE. (EXAMPLE: IF THE SIZE RANGE IS 12" TO 18", AT LEAST 50% OF PLANTS MUST BE 15" TALL.)

SUBMITTALS

PROPOSED PLANT SOURCES

- WITHIN 45 DAYS AFTER AWARD OF THE CONTRACT, SUBMIT A COMPLETE LIST OF PLANT MATERIALS PROPOSED TO BE PROVIDED DEMONSTRATING CONFORMANCE WITH THE REQUIREMENTS SPECIFIED. INCLUDE THE NAMES AND ADDRESSES OF ALL GROWERS AND NURSERIES.

PRODUCT CERTIFICATES

- PLANT MATERIALS LIST - SUBMIT DOCUMENTATION TO CONSULTANT AT LEAST 30 DAYS PRIOR TO START OF WORK UNDER THIS SECTION THAT PLANT MATERIALS HAVE BEEN ORDERED. ARRANGE PROCEDURE FOR INSPECTION OF PLANT MATERIAL WITH CONSULTANT AT TIME OF SUBMISSION.
- HAVE COPIES OF VENDOR'S OR GROWERS' INVOICES OR PACKING SLIPS FOR ALL PLANTS ON SITE DURING INSTALLATION. INVOICE OR PACKING SLIP SHOULD LIST SPECIES BY SCIENTIFIC NAME, QUANTITY, AND DATE DELIVERED (AND GENETIC ORIGIN IF THAT INFORMATION WAS PREVIOUSLY REQUESTED).

DELIVERY, HANDLING, & STORAGE

NOTIFICATION

CONTRACTOR MUST NOTIFY CONSULTANT 48 HOURS OR MORE IN ADVANCE OF DELIVERIES SO THAT CONSULTANT MAY ARRANGE FOR INSPECTION.

PLANT MATERIALS

- TRANSPORTATION - DURING SHIPPING, PLANTS SHALL BE PACKED TO PROVIDE PROTECTION AGAINST CLIMATE EXTREMES, BREAKAGE AND DRYING. PROPER VENTILATION AND PREVENTION OF DAMAGE TO BARK, BRANCHES, AND ROOT SYSTEMS MUST BE ENSURED.
- SCHEDULING AND STORAGE - PLANTS SHALL BE DELIVERED AS CLOSE TO PLANTING AS POSSIBLE. PLANTS IN STORAGE MUST BE PROTECTED AGAINST ANY CONDITION THAT IS DETRIMENTAL TO THEIR CONTINUED HEALTH AND VIGOR.
- HANDLING - PLANT MATERIALS SHALL NOT BE HANDLED BY THE TRUNK, LIMBS, OR FOLIAGE BUT ONLY BY THE CONTAINER, BALL, BOX, OR OTHER PROTECTIVE STRUCTURE, EXCEPT BAREROOT PLANTS SHALL BE KEPT IN BUNDLES UNTIL PLANTING AND THEN HANDLED CAREFULLY BY THE TRUNK OR STEM.
- LABELS - PLANTS SHALL HAVE DURABLE, LEGIBLE LABELS STATING CORRECT SCIENTIFIC NAME AND SIZE. TEN PERCENT OF CONTAINER GROWN PLANTS IN INDIVIDUAL POTS SHALL BE LABELED. PLANTS SUPPLIED IN FLATS, RACKS, BOXES, BAGS, OR BUNDLES SHALL HAVE ONE LABEL PER GROUP.

WARRANTY

PLANT WARRANTY

PLANTS MUST BE GUARANTEED TO BE TRUE TO SCIENTIFIC NAME AND SPECIFIED SIZE, AND TO BE HEALTHY AND CAPABLE OF VIGOROUS GROWTH.

REPLACEMENT

- PLANTS NOT FOUND MEETING ALL OF THE REQUIRED CONDITIONS AT THE CONSULTANT'S DISCRETION MUST BE REMOVED FROM SITE AND REPLACED IMMEDIATELY AT THE CONTRACTOR'S EXPENSE.
- PLANTS NOT SURVIVING AFTER ONE YEAR TO BE REPLACED AT THE CONTRACTOR'S EXPENSE.

PLANT MATERIAL

GENERAL

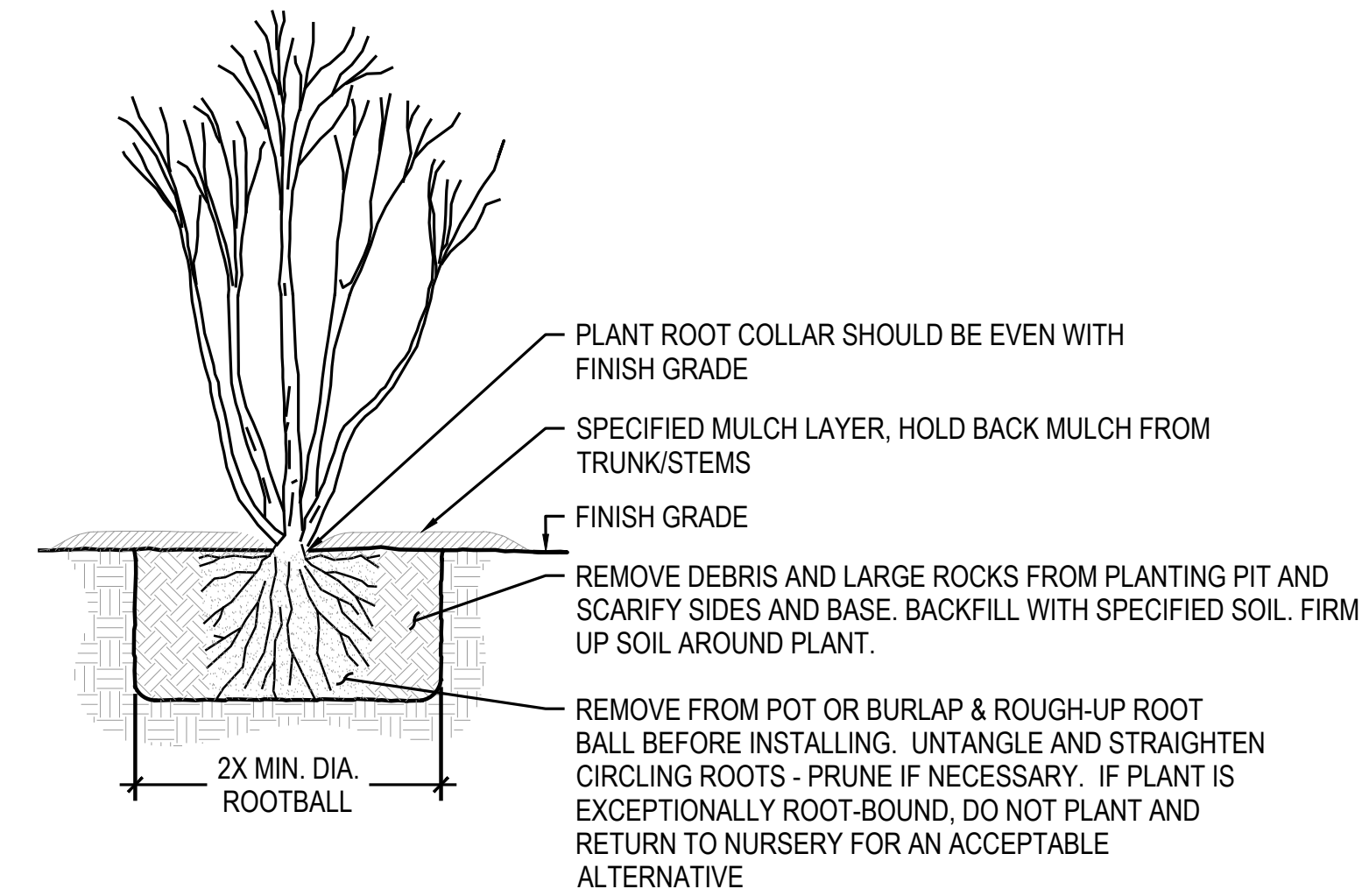
- PLANTS SHALL BE NURSERY GROWN IN ACCORDANCE WITH GOOD HORTICULTURAL PRACTICES UNDER CLIMATIC CONDITIONS SIMILAR TO OR MORE SEVERE THAN THOSE OF THE PROJECT SITE.
- PLANTS SHALL BE TRUE TO SPECIES AND VARIETY OR SUBSPECIES. NO CULTIVARS OR NAMED VARIETIES SHALL BE USED UNLESS SPECIFIED AS SUCH.

QUANTITIES

SEE PLANT LIST ON SHEET L2 FOR ACCOMPANYING PLANS AND PLANT SCHEDULES.

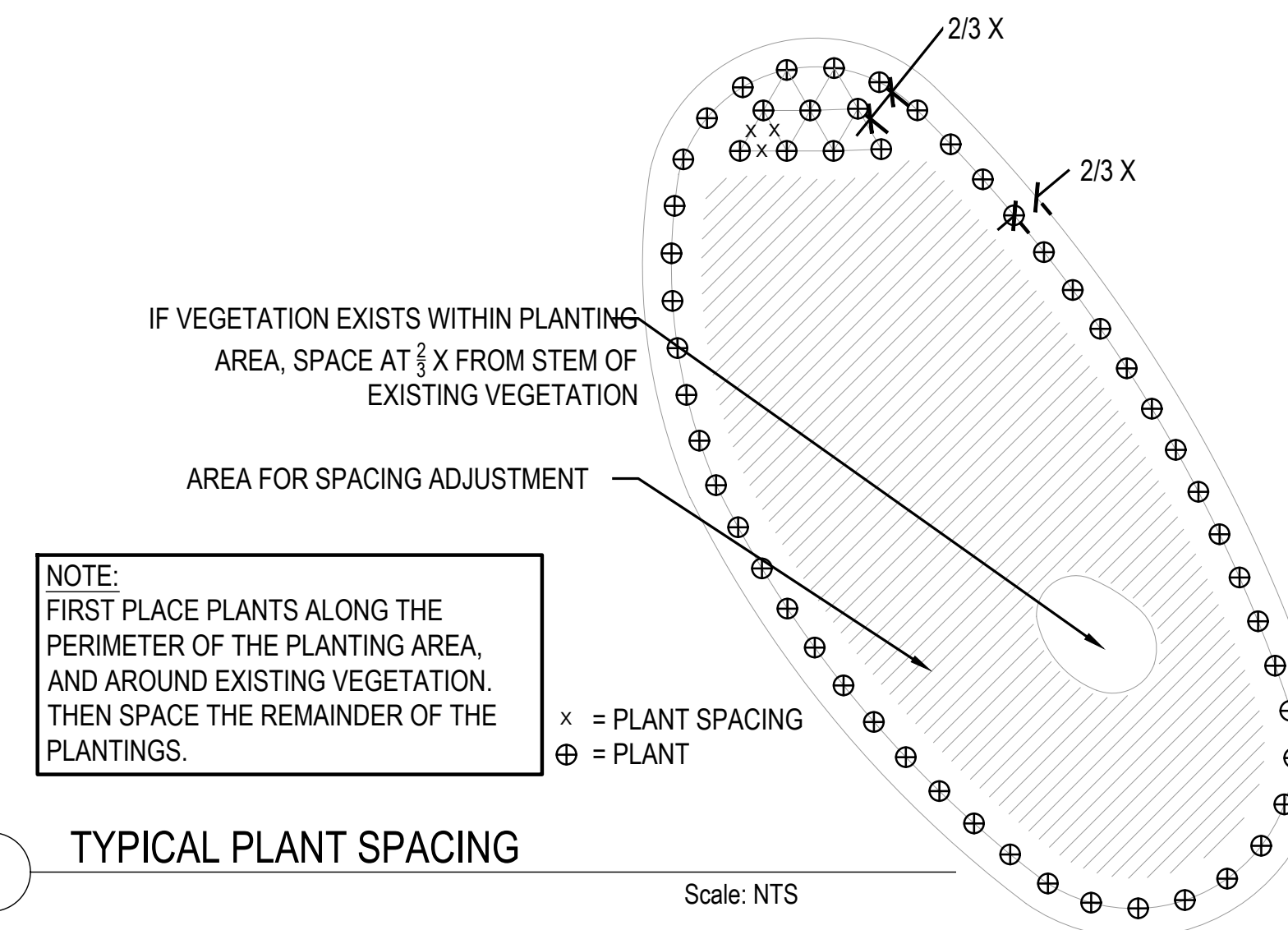
ROOT TREATMENT

- CONTAINER GROWN PLANTS (INCLUDES PLUGS): PLANT ROOT BALLS MUST HOLD TOGETHER WHEN THE PLANT IS REMOVED FROM THE POT, EXCEPT THAT A SMALL AMOUNT OF LOOSE SOIL MAY BE ON THE TOP OF THE ROOTBALL.
- PLANTS MUST NOT BE ROOT-BOUND; THERE MUST BE NO CIRCLING ROOTS PRESENT IN ANY PLANT INSPECTED.
- ROOTBALLS THAT HAVE CRACKED OR BROKEN WHEN REMOVED FROM THE CONTAINER SHALL BE REJECTED.



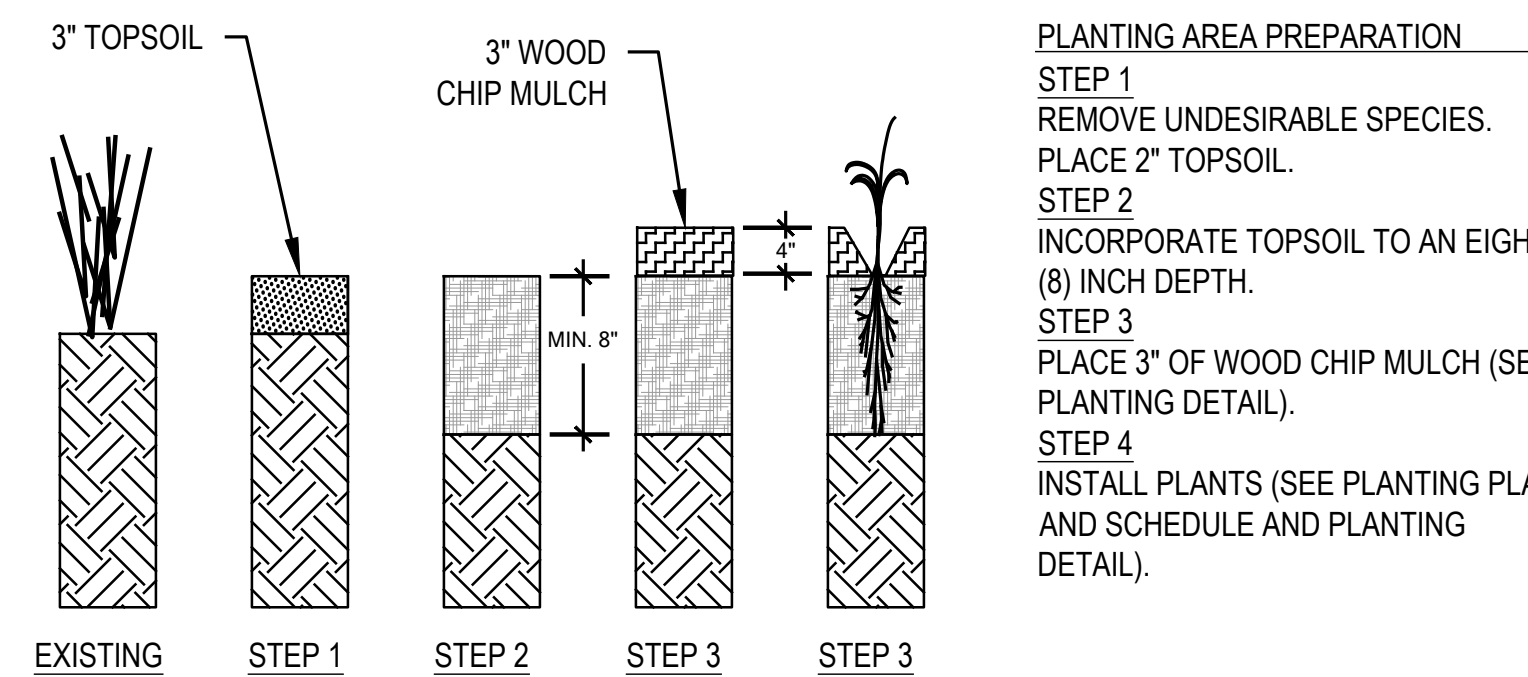
1 CONTAINER PLANTING DETAIL

Scale: NTS



2 TYPICAL PLANT SPACING

Scale: NTS



3 SITE PREPARATION - HATCHED RESTORATION PLANTING AREAS

Scale: NTS

DIG WATERSHED
 750 Sixth Street South
 Kirkland, WA 98033
 P: 425-822-5242
 F: 425-827-8136
 www.digwatershed.com

PRELIMINARY

**CALL 811
 2 BUSINESS DAYS
 BEFORE YOU DIG**
(UNDERGROUND UTILITY LOCATIONS ARE APPROX.)

**BAUGHMAN RESIDENCE RESTORATION, TREE
 AND VEGETATION CLEARING VIOLATION**
 33326 NE 118TH PL
 CARNATION, WA 98014
 200812

RESTORATION PLAN

DATE: 09/01/2023
 PLAN NUMBER:
L3
 SHEET 3 OF 4

PRINCIPAL: JKB PROJECT MANAGER: DM DESIGNED BY: AS DRAWN BY: AS LK CHECKED BY: JKB, JF

MITIGATION PLAN NOTES

OVERVIEW

THIS PLAN HAS BEEN PREPARED AS RESTORATION FOR ALREADY-BUILT CONSTRUCTION IMPACTS TO THE AQUATIC AREA BUFFER AND FULFILLS THE REQUIREMENTS OF KCC 21A.24.130. THE PLAN WILL RESTORE CRITICAL AREA FUNCTIONS TO THE AQUATIC BUFFER OF THE STREAM AS WELL AS MITIGATE FOR THE REMOVAL OF SIGNIFICANT TREES FROM THE SUBJECT PROPERTY.

THE REMOVAL OF 23 TREES WITHIN THE STREAM BUFFER WILL BE RESTORED BY REPLACING THEM WITH 78 NATIVE TREES AT A RATIO OF GREATER THAN 3:1. ALL CLEARED AREAS WITHIN THE SUBJECT PARCEL WILL BE RESTORED TO ITS PREVIOUS CONDITION OR TO AN ENHANCED CONDITION WITH NATIVE TREES AND SHRUBS. ADDITIONAL NATIVE SHRUBS AND WILL BE VOLUNTARILY ADDED TO DIVERSIFY THE VEGETATION STRUCTURE ONSITE.

MAINTENANCE AND MONITORING PLAN

THE SITE SHALL BE MAINTAINED AND MONITORED FOR FIVE YEARS FOLLOWING SUCCESSFUL INSTALLATION. COMPONENTS OF THE 5-YEAR MAINTENANCE AND MONITORING PLAN ARE DETAILED BELOW.

GOALS

- RESTORE STREAM BUFFER AREAS TO PRE-EXISTING CONDITION.
- LIMIT INVASIVE AND/OR NOXIOUS WEED COVER ON-SITE.
- RE-ESTABLISH NATIVE TREES. PROVIDE PERCHING, NESTING, AND FORAGING HABITAT FOR NATIVE BIRDS.

PERFORMANCE STANDARDS

THE STANDARDS LISTED BELOW WILL BE USED TO JUDGE THE SUCCESS OF THE RESTORATION PLANTING AREAS OVER TIME. IF PERFORMANCE STANDARDS ARE MET AT THE END OF YEAR 5, THE SITE WILL THEN BE DEEMED SUCCESSFUL.

- SURVIVAL: THIS STANDARD CAN BE MET THROUGH PLANT ESTABLISHMENT OR THROUGH REPLANTING IN THE FOLLOWING DORMANT SEASON AS NECESSARY TO ACHIEVE THE REQUIRED NUMBERS.
 - ACHIEVE 100% SURVIVAL OF WOODY PLANT COVER BY THE END OF YEAR 1 (FROM DATE OF PLANT INSTALLATION).
 - ACHIEVE 80% SURVIVAL OF WOODY PLANT COVER BY YEAR 3. RETAINED VEGETATION AND NATIVE VOLUNTEER SPECIES MAY COUNT TOWARD THIS COVER STANDARD.
 - ACHIEVE 60% OF WOODY PLANT COVER BY YEARS 4-5. RETAINED VEGETATION AND NATIVE VOLUNTEER SPECIES MAY COUNT TOWARD THIS COVER STANDARD.
- SPECIES DIVERSITY: ESTABLISH AT LEAST 4 NATIVE TREE AND 7 NATIVE SHRUB SPECIES SITE WIDE BY YEAR 3 AND MAINTAIN THIS DIVERSITY THROUGH YEAR 5. NATIVE VOLUNTEER SPECIES MAY COUNT TOWARDS THIS STANDARD.
- INVASIVE COVER: AERIAL COVER FOR ALL NON-NATIVE, INVASIVE AND NOXIOUS WEEDS WILL NOT EXCEED 10% AT ANY YEAR DURING THE MONITORING PERIOD. INVASIVE PLANTS INCLUDE BUT ARE NOT LIMITED TO HIMALAYAN BLACKBERRY (RUBUS ARMENIACUS), CUT LEAF BLACKBERRY (RUBUS LACINIATUS), KNOTWEEDS (POLYGONUM CUSPIDATUM AND OTHERS), REED CANARYGRASS (PHALARIS ARUNDINACEA), CHERRY (HEDGE) LAUREL (PRUNUS LAUROCERASUS), ENGLISH HOLLY (ILEX AQUIFOLIUM), AND IVY SPECIES (HEDERA SPP.).

MONITORING METHODS

THIS MONITORING PROGRAM IS DESIGNED TO TRACK THE SUCCESS OF THE RESTORATION SITE OVER TIME AND TO MEASURE THE DEGREE TO WHICH IT IS MEETING THE PERFORMANCE STANDARDS OUTLINED IN THE PRECEDING SECTION.

AN AS-BUILT PLAN WILL BE PREPARED BY THE RESTORATION PROFESSIONAL PRIOR TO THE BEGINNING OF THE MONITORING PERIOD. THE AS-BUILT PLAN WILL BE A MARK-UP OF THE PLANTING PLANS INCLUDED IN THIS PLAN SET. THE AS-BUILT PLAN WILL DOCUMENT ANY DEPARTURES IN PLANT PLACEMENT OR OTHER COMPONENTS FROM THE PROPOSED PLAN.

MONITORING WILL TAKE PLACE ONCE ANNUALLY IN THE FALL FOR 5 YEARS. YEAR-1 MONITORING WILL COMMENCE IN THE FIRST FALL FOLLOWING INSTALLATION.

THE FORMAL MONITORING VISIT SHALL RECORD AND REPORT THE FOLLOWING IN AN ANNUAL REPORT SUBMITTED TO KING COUNTY:

- VISUAL ASSESSMENT OF THE OVERALL SITE.
- YEAR-1 COUNTS OF LIVE AND DEAD PLANTS BY SPECIES. YEAR-2 THROUGH YEAR-5 COUNTS OF ESTABLISHED NATIVE TREES, TO THE EXTENT FEASIBLE.
- COUNTS OF DEAD TREES WHERE MORTALITY IS SIGNIFICANT IN ANY MONITORING YEAR.
- ESTIMATE OF NATIVE COVER IN THE RESTORATION AREA.
- ESTIMATE OF NON-NATIVE, INVASIVE WEED COVER IN THE RESTORATION AREA.
- TABULATION OF ESTABLISHED NATIVE SPECIES, INCLUDING BOTH PLANTED AND VOLUNTEER SPECIES.
- PHOTOGRAPHIC DOCUMENTATION FROM AT LEAST THREE FIXED REFERENCE POINTS.
- ANY INTRUSIONS INTO OR CLEARING OF THE PLANTING AREAS, VANDALISM, OR OTHER ACTIONS THAT IMPAIR THE INTENDED FUNCTIONS OF THE MITIGATION AREA.
- RECOMMENDATIONS FOR MAINTENANCE OR REPAIR OF ANY PORTION OF THE RESTORATION AREA.

MAINTENANCE

THE SITE WILL BE MAINTAINED IN ACCORDANCE WITH THE FOLLOWING INSTRUCTIONS FOR AT LEAST FIVE YEARS FOLLOWING COMPLETION OF CONSTRUCTION:

- FOLLOW THE RECOMMENDATIONS NOTED IN THE PREVIOUS MONITORING SITE VISIT.
- GENERAL WEEDING FOR ALL PLANTED AREAS.
 - AT LEAST TWICE YEARLY, REMOVE ALL COMPETING WEEDS AND WEED ROOTS FROM BENEATH EACH INSTALLED PLANT AND ANY DESIRABLE VOLUNTEER VEGETATION TO A DISTANCE OF 18 INCHES FROM THE MAIN PLANT STEM. WEEDING SHOULD OCCUR AT LEAST TWICE DURING THE SPRING AND SUMMER. FREQUENT WEEDING WILL RESULT IN LOWER MORTALITY, LOWER PLANT REPLACEMENT COSTS, AND

INCREASED LIKELIHOOD THAT THE PLAN MEETS PERFORMANCE STANDARDS BY YEAR 5.

- MORE FREQUENT WEEDING MAY BE NECESSARY DEPENDING ON WEED CONDITIONS THAT DEVELOP AFTER PLAN INSTALLATION.
 - DO NOT WEED THE AREA NEAR THE PLANT BASES WITH STRING TRIMMER (WEED WHACKER/WEED EATER). NATIVE PLANTS ARE EASILY DAMAGED OR KILLED, AND WEEDS EASILY RECOVER AFTER TRIMMING.
 - SELECTIVE APPLICATIONS OF HERBICIDE MAY BE NEEDED TO CONTROL INVASIVE WEEDS, ESPECIALLY WHEN INTERMIXED WITH NATIVE SPECIES. HERBICIDE APPLICATION, WHEN NECESSARY, SHALL BE CONDUCTED ONLY BY A STATE-LICENSED APPLICATOR.
- APPLY SLOW-RELEASE, GRANULAR FERTILIZER TO EACH INSTALLED PLANT ANNUALLY IN THE SPRING (BY JUNE 1) OF YEARS 2 AND 3.
- REPLACE MULCH AS NECESSARY TO MAINTAIN A 3-INCH-THICK LAYER NEAR TREE SPECIES TO RETAIN SOIL MOISTURE AND LIMIT WEEDS.
- REPLACE EACH PLANT FOUND DEAD IN THE SUMMER MONITORING VISITS DURING THE UPCOMING DORMANT SEASON (OCTOBER 15 TO MARCH 1), FOR BEST SURVIVAL.
- THE PROPERTY OWNER WILL ENSURE THAT WATER IS PROVIDED FOR THE ENTIRE PLANTED AREA WITH A MINIMUM OF 1 INCH OF WATER PER WEEK FROM JUNE 1 THROUGH SEPTEMBER 30 FOR THE FIRST TWO YEARS FOLLOWING INSTALLATION, THROUGH THE OPERATION OF A TEMPORARY IRRIGATION SYSTEM. LESS WATER IS NEEDED DURING THE REST OF THE YEAR.

CONSTRUCTION NOTES AND SPECIFICATIONS

THE RESTORATION PROFESSIONAL WILL MONITOR:

- ALL SITE PREPARATION.
 - WEED REMOVAL.
 - MULCH PLACEMENT AND INSTALLATION OF MULCH RINGS.
- PLANT/SEED MATERIAL INSPECTION.
 - PLANT MATERIAL DELIVERY INSPECTION.
 - 100% PLANT INSTALLATION INSPECTION.

GENERAL WORK SEQUENCE

SITE PREPARATION

- CLEAR ANY INVASIVE AND NON-NATIVE VEGETATION FROM MITIGATION AREA DURING SPRING AND/OR SUMMER MONTHS (I.E., AVOID CREATING EXPOSED SOIL CONDITIONS DURING THE WINTER STORM SEASON).
 - REMOVE INVASIVE SPECIES (I.E., HIMALAYAN BLACKBERRY, ENGLISH IVY), IN ACCORDANCE WITH KING COUNTY NOXIOUS WEED BEST MANAGEMENT PRACTICES. FOR MORE INFORMATION: [HTTPS://WWW.KINGCOUNTY.GOV/SERVICES/ENVIRONMENT/ANIMALS-AND-PLANTS/NOXIOUS-WEEDS.ASPX](https://www.kingcounty.gov/services/environment/animals-and-plants/noxious-weeds.aspx).
 - AVOID AND MINIMIZE DISTURBANCE AND/OR COMPACTION TO ROOTS OF ESTABLISHED NATIVE TREES TO BE RETAINED WHEN REMOVING VEGETATION FROM WITHIN TREE DRIPLINES.
- BLANKET-MULCH ANY CLEARED AREAS WITH WOOD CHIP MULCH, THREE INCHES THICK. MULCH RINGS WILL BE INSTALLED AROUND NEW TREES.
 - ENSURE MULCH DOES NOT TOUCH STEMS OF EXISTING (OR INSTALLED) VEGETATION. SEE PLANTING DETAIL ON SHEET L3.

RESTORATION PLANTING AND IRRIGATION

- INSTALL RESTORATION PLANTS DURING THE DORMANT SEASON (OCTOBER 15 - MARCH 1).
 - PREPARE A PLANTING PIT FOR EACH PLANT AND INSTALL PER THE PLANTING DETAILS.
- INSTALL A TEMPORARY, ABOVE GROUND IRRIGATION SYSTEM TO PROVIDE FULL COVERAGE TO ALL INSTALLED PLANTS WITHIN THE RESTORATION AREAS.

MATERIAL SPECIFICATIONS AND DEFINITIONS

- FERTILIZER (FOR NEAR AQUATIC ENVIRONMENTS): SLOW-RELEASE, PHOSPHOROUS-FREE GRANULAR FERTILIZER. LABEL MUST INDICATE THAT PRODUCT IS SAFE FOR AQUATIC ENVIRONMENTS. FOLLOW MANUFACTURER'S INSTRUCTIONS FOR USE. KEEP FERTILIZER IN WEATHER-TIGHT CONTAINER WHILE ON-SITE. FERTILIZER IS ONLY TO BE APPLIED IN YEARS TWO AND THREE, NOT IN YEAR ONE.
- IRRIGATION SYSTEM: SYSTEM CAPABLE OF DELIVERING AT LEAST ONE INCH OF WATER PER WEEK FROM JUNE 1 THROUGH SEPTEMBER 30 FOR THE FIRST TWO YEARS FOLLOWING INSTALLATION.
- RESTORATION PROFESSIONAL: DCG/WATERSHED [(425) 822-5242] PERSONNEL, OR OTHER PERSONS QUALIFIED TO EVALUATE ENVIRONMENTAL RESTORATION PROJECTS.
- WOODCHIP MULCH: "ARBORIST CHIPS" (CHIPPED WOODY MATERIAL) APPROXIMATELY ONE TO THREE INCHES IN MAXIMUM DIMENSION (NO SAWDUST WILL BE USED). THIS MATERIAL IS COMMONLY AVAILABLE IN LARGE QUANTITIES FROM ARBORISTS OR TREE-PRUNING COMPANIES. MULCH SHALL NOT CONTAIN APPRECIABLE QUANTITIES OF GARBAGE, PLASTIC, METAL, SOIL, AND DIMENSIONAL LUMBER OR CONSTRUCTION/DEMOLITION DEBRIS.
- TOPSOIL: TOPSOIL SHALL BE A 3-WAY MIXTURE OF APPROXIMATELY 33-50% COMPOST AND 50-65% SAND OR SANDY LOAM. ALL COMPONENTS SHALL BE FREE OF PHYTO-TOXIC MATERIALS AND VIABLE SEEDS, RHIZOMES, OR ROOTS OF STATE-LISTED NOXIOUS WEEDS.

CONTINGENCIES

IF THERE IS A SIGNIFICANT PROBLEM WITH THE RESTORATION AREAS MEETING PERFORMANCE STANDARDS, A CONTINGENCY PLAN WILL BE DEVELOPED AND IMPLEMENTED. CONTINGENCY PLANS CAN INCLUDE, BUT ARE NOT LIMITED TO: SOIL AMENDMENT, ADDITIONAL PLANT INSTALLATION, AND PLANT SUBSTITUTIONS OF TYPE, SIZE, QUANTITY, AND LOCATION.

RESTORATION PLAN NOTES

PRINCIPAL: JKB PROJECT MANAGER: DM DESIGNED BY: AS DRAWN BY: AS, LK CHECKED BY: JKB, JF

NO.	DATE	BY	REVISION
1	09/01/2023	AS	RESPONSE TO CITY COMMENTS

DCG WATERSHED
 750 Sixth Street South
 Kirkland, WA 98033
 P: 425-822-5242
 F: 425-827-8136
 www.dcgwatershed.com

FEDERAL WAY | KIRKLAND | MOUNT VERNON | SEATTLE | SPOKANE | WIDBEY ISLAND

PRELIMINARY

**CALL 811
2 BUSINESS DAYS
BEFORE YOU DIG**
(UNDERGROUND UTILITY LOCATIONS ARE APPROX.)

**BAUGHMAN RESIDENCE RESTORATION, TREE
AND VEGETATION CLEARING VIOLATION**
 33326 NE 118TH PL
 CARNATION, WA 98014
 200812

RESTORATION PLAN

DATE: 09/01/2023
 PLAN NUMBER:
L4
 SHEET 4 OF 4