

# Mid-Field Airpark Visioning Session

May 27, 2021



**RS&H**



# Introductions



**Matthew Sykora, CM**

*Properties and Business Development, KCIA*



**Steven Domino, AAE**

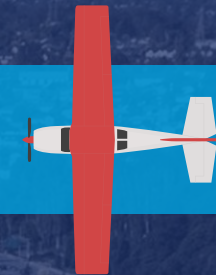
*Project Manager, RS&H*



**Steven Derengowski, CM**

*Project Planner, RS&H*

# Agenda



INTRODUCTIONS

PURPOSE

PLANNING GOALS AND OBJECTIVES

SITE CONSTRAINTS AND OPPORTUNITIES

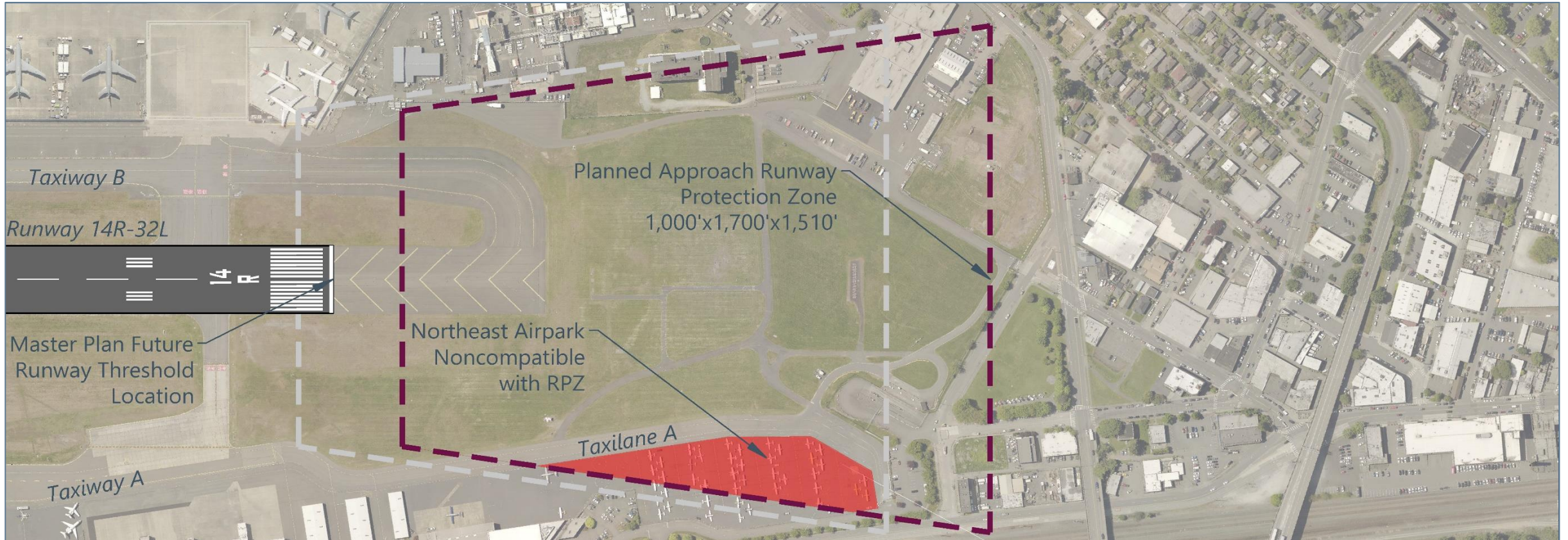
MID-FIELD AIRPARK FUTURE VISION



**RS&H**



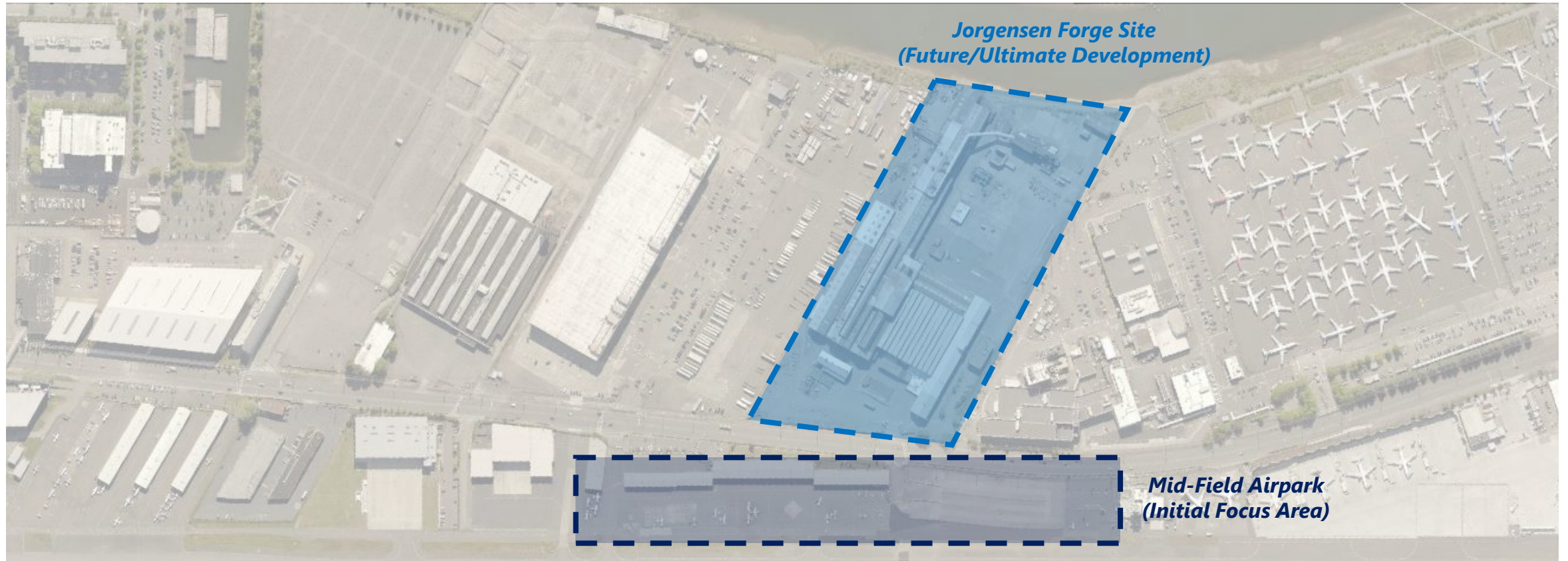
# Resolve FAA Design Challenges



*“Where do we relocate the displaced aircraft to address a critical safety design deficiency?”*



# The Idea – Mid-Field Airpark



*“How can the Jorgensen Forge Site and Mid-Field Airpark become compatible for long-term use?”*



# The Idea – Mid-Field Airpark



*“How do we optimize the airpark to accommodate displaced aircraft in the short-term?”*

# Goals and Planning Objectives

*Correct nonstandard conditions at the Airport to maintain and improve the **safety of operations***

*Enhance the **efficiency of operations** of the Airport*

*The **immediate plan is compatible** with the Airport's long-term vision*

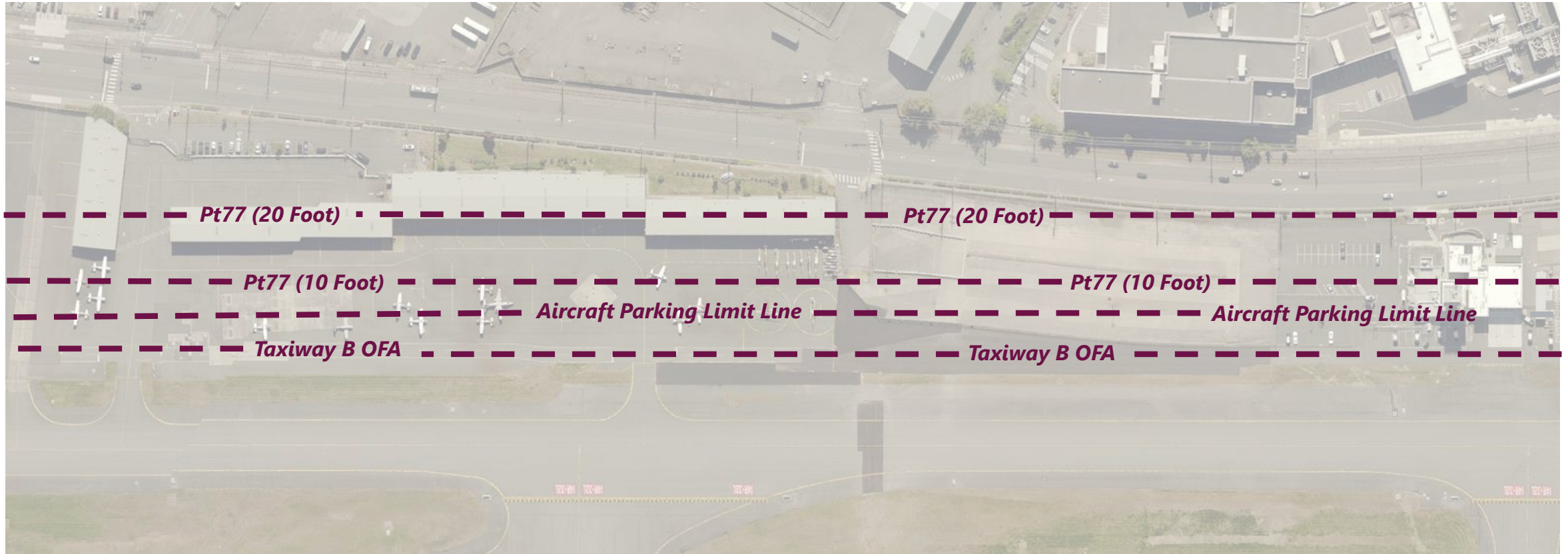
*Facility enhancements are developed through **strategic Capital Improvement Program (CIP) planning***

***Collaborate with key stakeholders** to understand unique perspectives*

*Future facilities are designed and **implemented for the users needs***



# Mid-Field Airpark Site Considerations



Airfield / Airspace  
Design Standards





# Mid-Field Airpark Site Considerations



Airfield / Airspace  
Design Standards



Tenant Leases  
and Operations



# Mid-Field Airpark Site Considerations



Airfield / Airspace  
Design Standards



Tenant Leases  
and Operations



Utility  
Infrastructure



# Mid-Field Airpark Site Considerations



Airfield / Airspace  
Design Standards



Tenant Leases  
and Operations



Utility  
Infrastructure



Environmental  
Considerations



# We want to hear from you!





# We want to hear from you!

*Facility Enhancements*

*User Experience*



*Study Area*

*Existing Challenges*

*Successful Planning*

# Feel Free to Reach Out

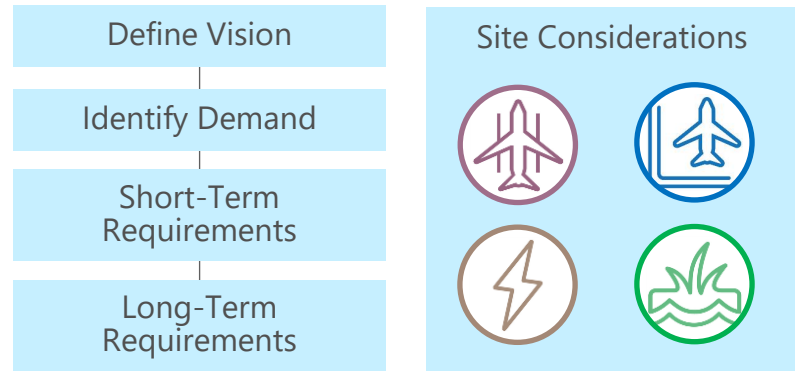
- » Mid-Field Airpark Development
- » Email: [KCIACommunityOutreach@KingCounty.gov](mailto:KCIACommunityOutreach@KingCounty.gov)
- » Initial feedback due Friday, June 4<sup>th</sup>
- » Not only time to provide input



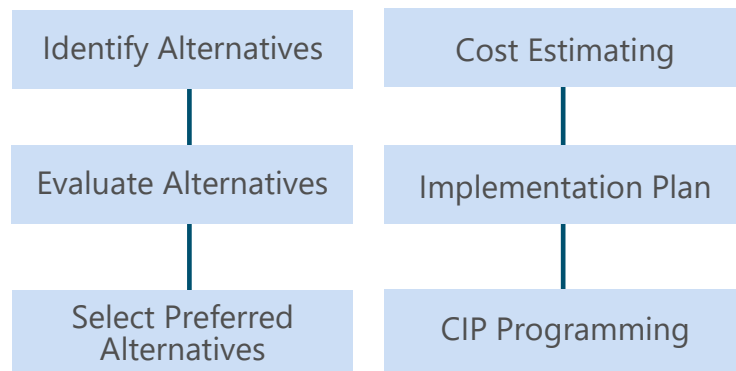
# Project Schedule



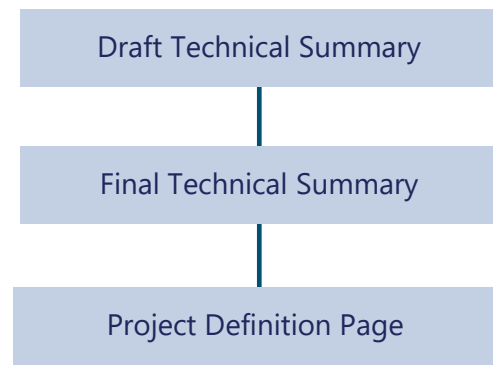
## Investigation Phase



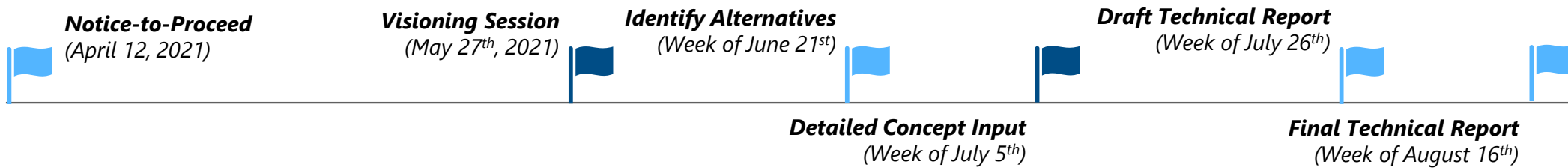
## Solutions and Implementation Phase



## Documentation Phase



## Key Milestones and Stakeholder Engagement



Legend:

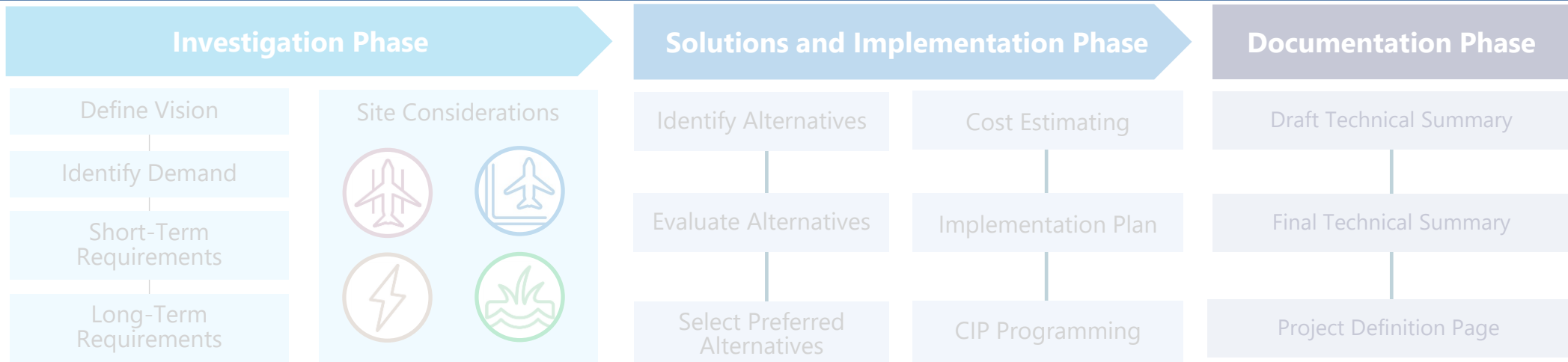


Project Milestone



Stakeholder Engagement

# Project Schedule



## Key Milestones and Stakeholder Engagement

