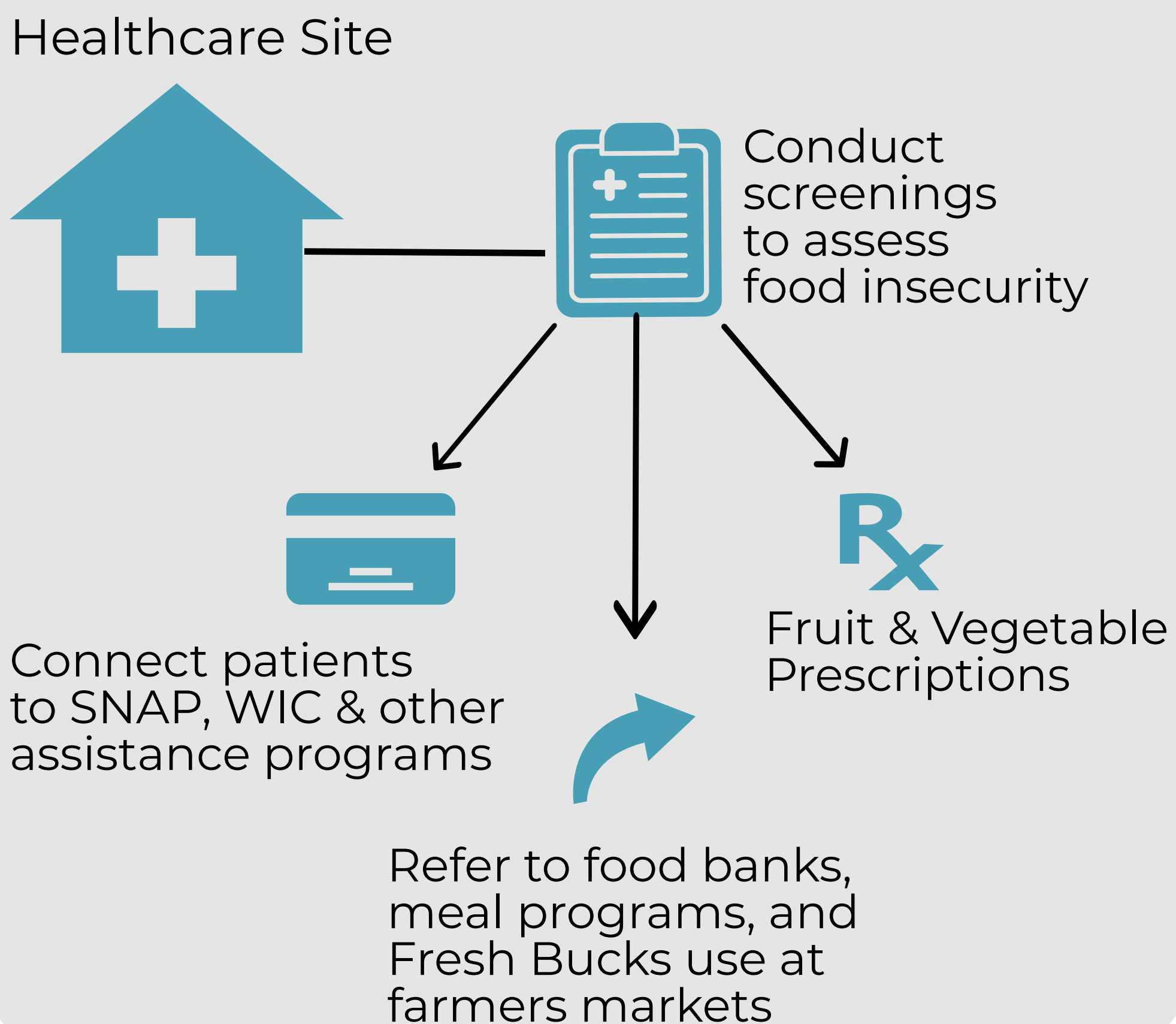


King County Healthcare & Food Insecurity Learning Network

Addressing Food Insecurity in Healthcare Settings

PATIENT REFERRAL PATHWAY



HUNGER VITAL SIGN SCREENING QUESTIONS

Answering "sometimes true" or "often true" identifies a risk for food insecurity.

"Within the past 12 months we worried whether our food would run out before we got money to buy more."

"Within the past 12 months the food we bought just didn't last and we didn't have money to get more."

Health systems across King County connect patients to national, local, and community level food resources.

National

Federally funded nutrition programs such as the Supplemental Nutrition Assistance Program (**SNAP**), & The Special Supplemental Nutrition program for Women, Infants, & Children (**WIC**), are offered through clinics and connection agencies. **School-based** programs also support youth and families.

Local

Food Banks

Over 50 food banks operate throughout King County at various locations.

Meal Programs

Meals on Wheels, Chicken Soup Brigade, Senior Congregate Meals & others offer nutritious meals directly to homes and community settings.

Fresh Bucks

Fresh Bucks reduces the cost of fresh fruits and vegetables for SNAP recipients and other eligible residents.

Community

On-site Food Pantry

Health systems such as Seattle Children's, refer families to their onsite food pantry.

Pop-up Food Pantries & Produce Stands

Mobile food banks and fresh produce stands bring food and fresh produce to community clinics.

Fresh Bucks

Healthcare professionals issue Fresh Bucks produce prescriptions for redemption at participating farmers markets and grocers.

Connectors

Health systems utilize **community health workers** and state-wide connection agencies such as WithinReach, Washington Connection, & Washington 2-1-1, offering in-person and web-based resource navigation.



Thank you to the following health systems for sharing your food insecurity screening and referral process!

Country Doctor's Carolyn Downs, Harborview Medical Center International Community Health Services, Kaiser Permanente Seattle Children's Hospital, Seattle Children's Odessa Brown Clinic and Sea Mar Community Health Centers