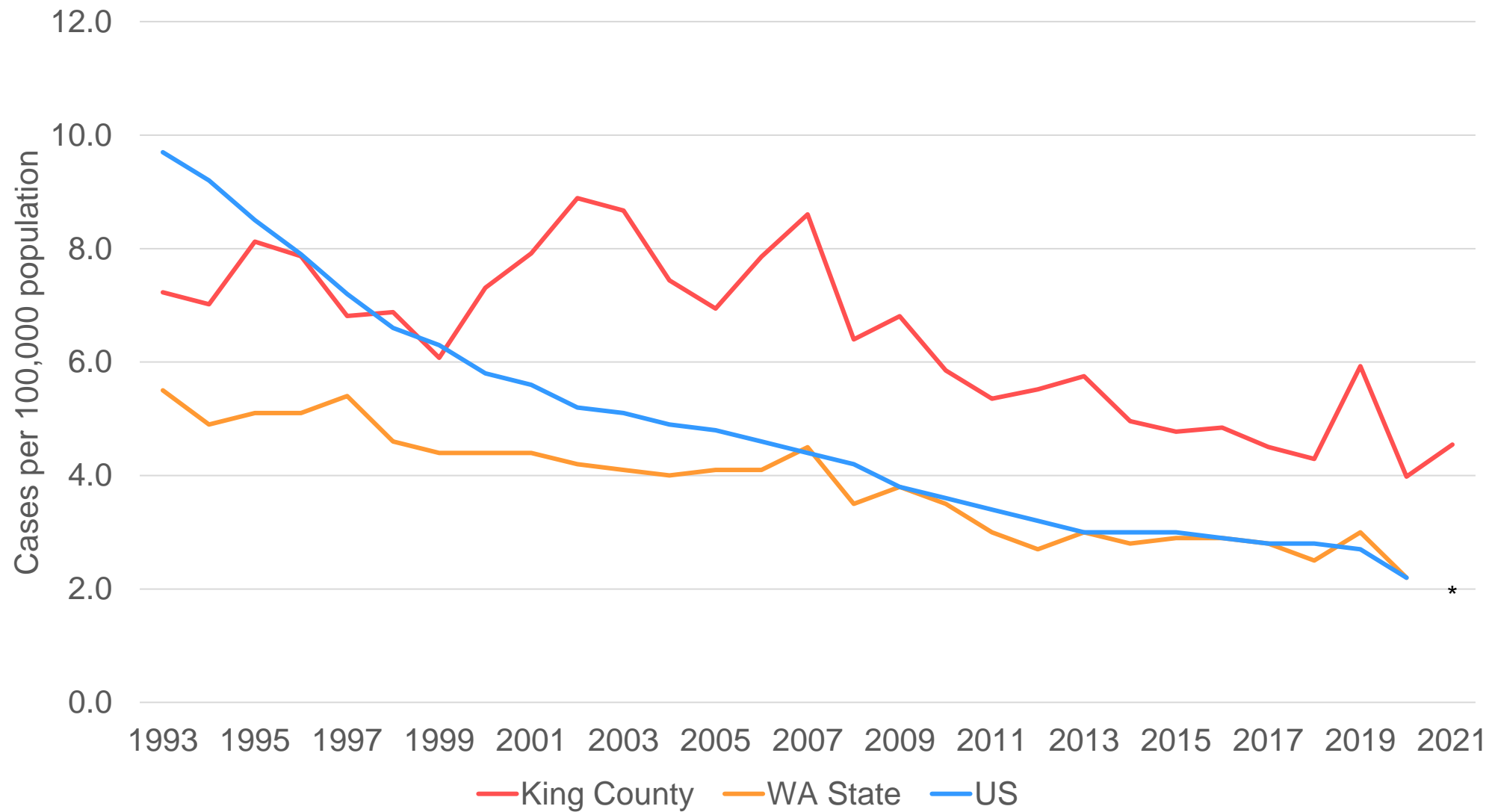


# TUBERCULOSIS IN KING COUNTY

---

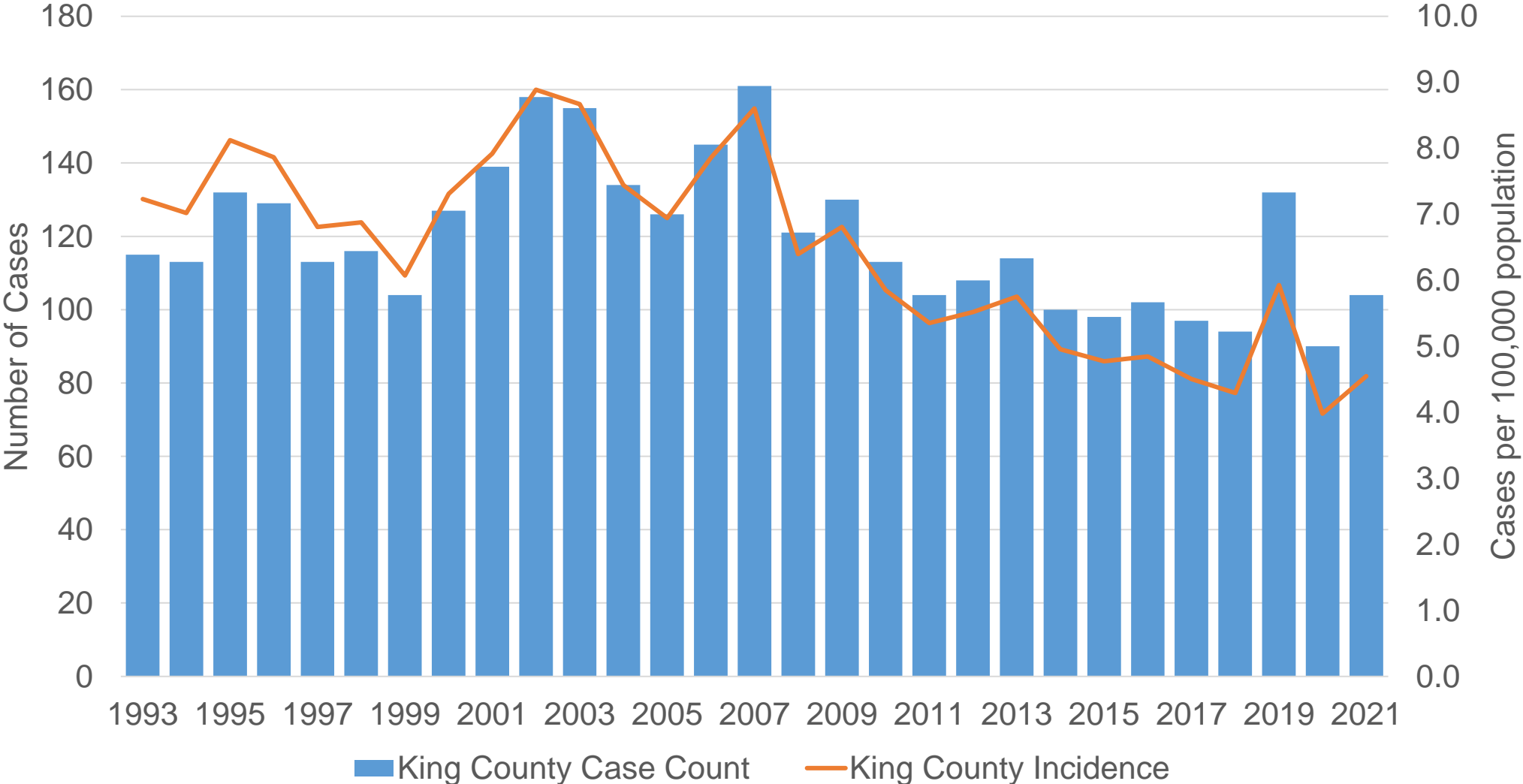
2021 Report

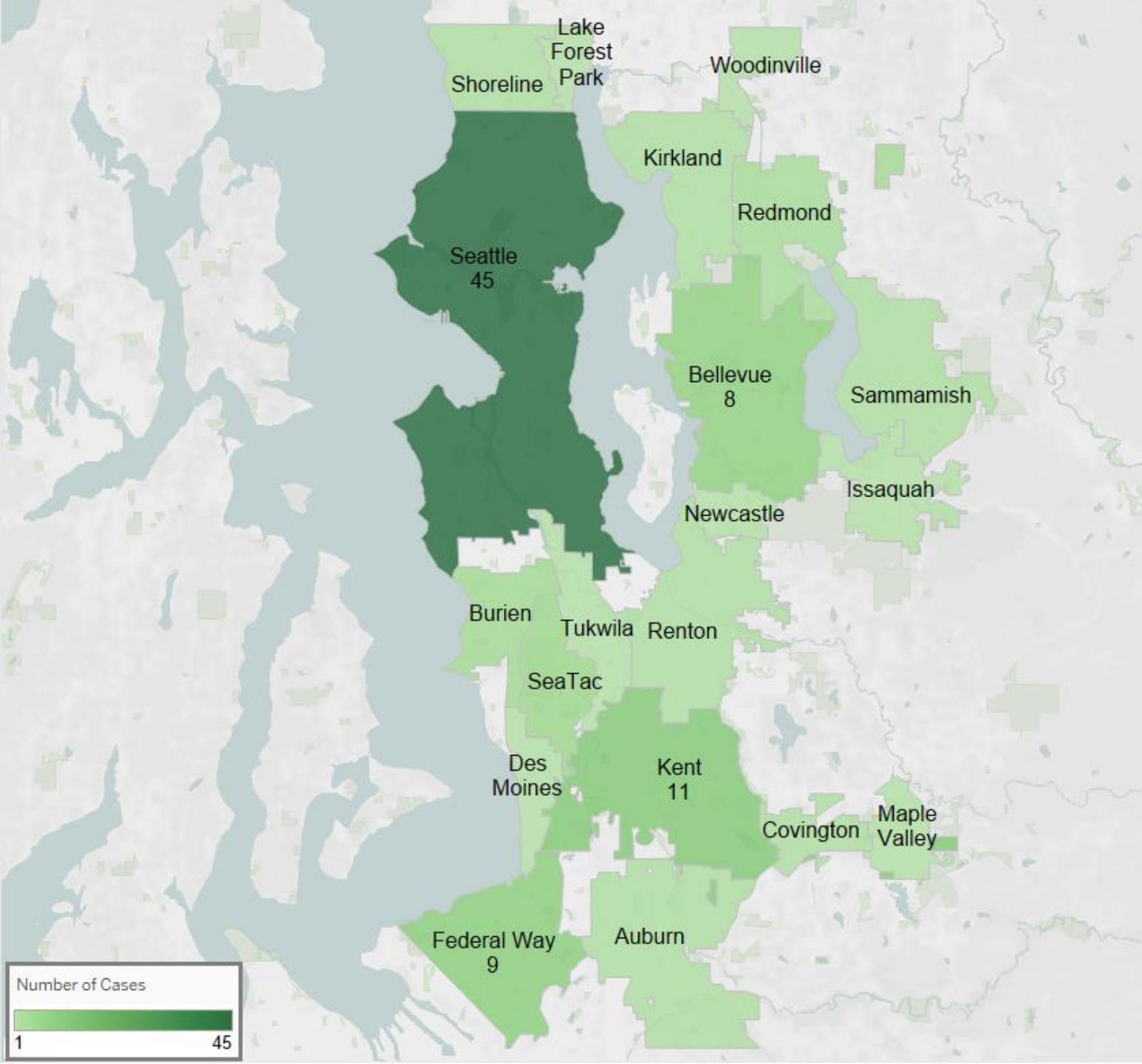
# Reported Tuberculosis (TB) Rates 1993-2021, King County, WA



*\*Final 2021 rates for WA State and US not yet available*

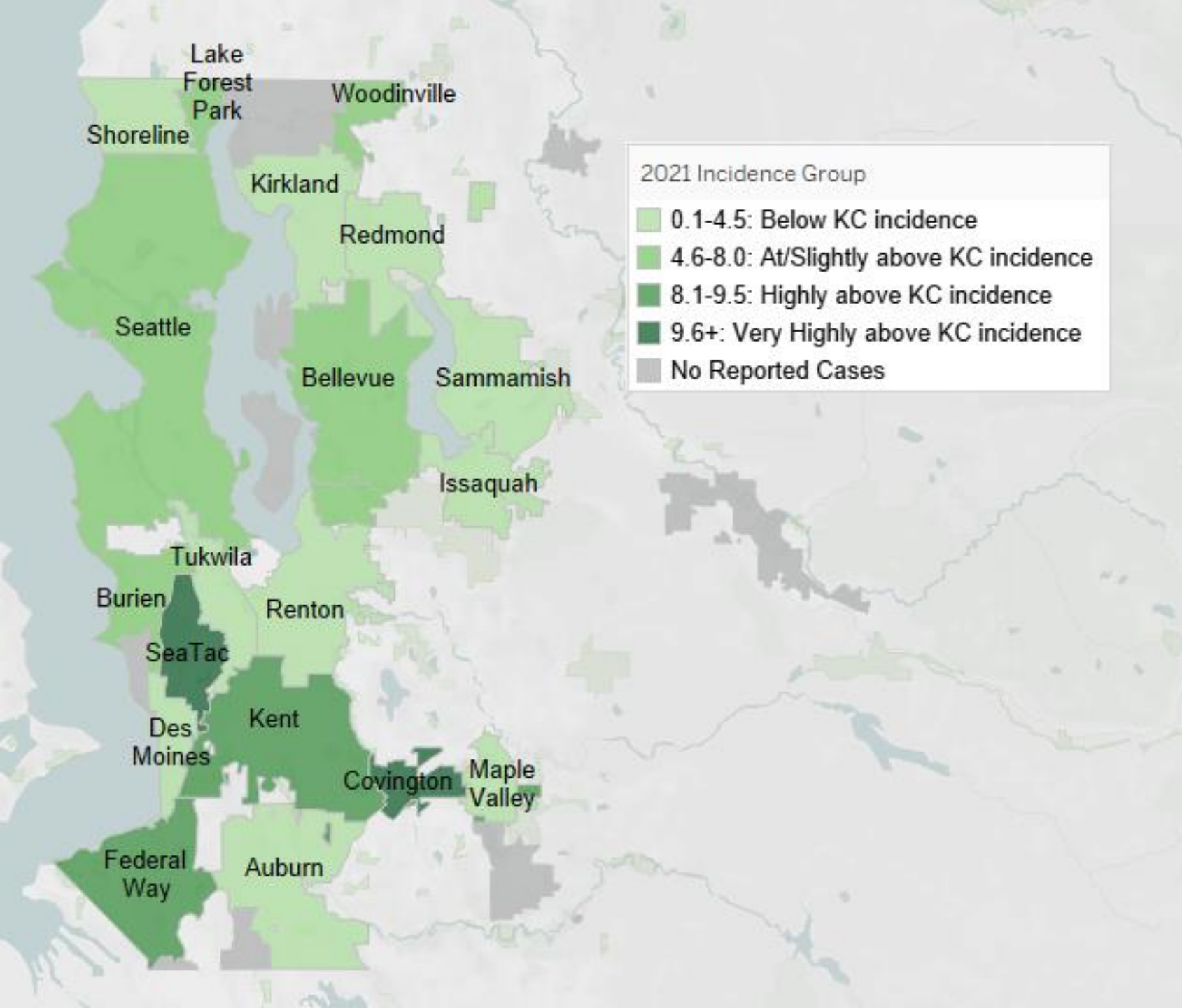
# Reported TB Cases and Rates, 1993-2021, King County, WA





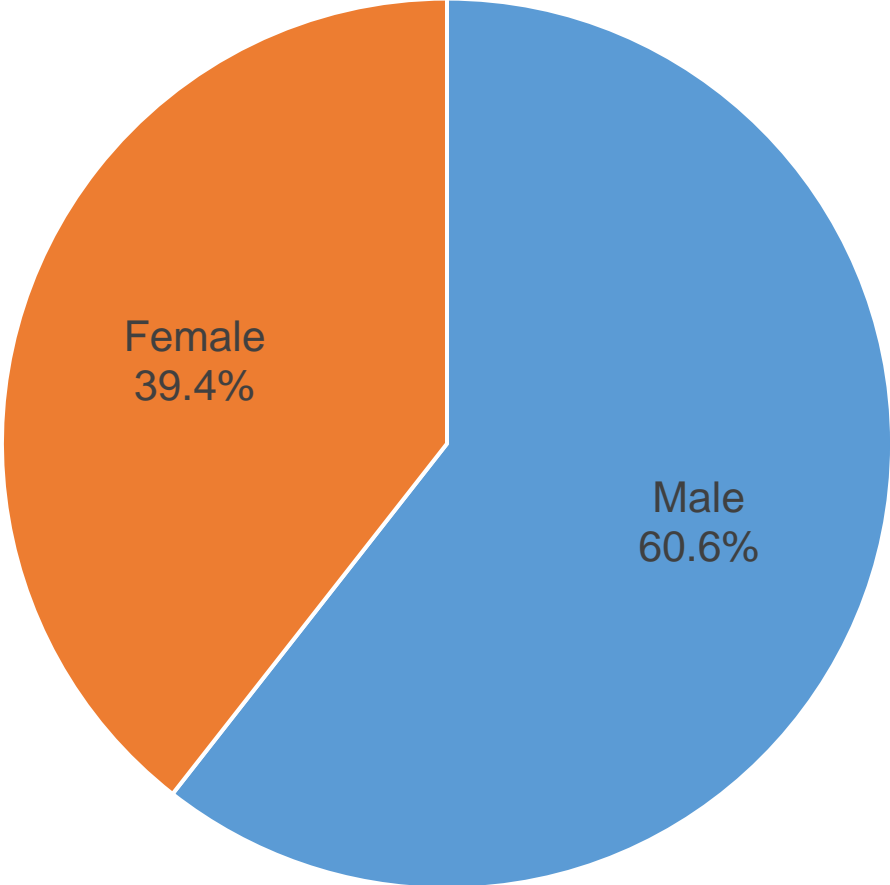
# Reported TB Cases in King County Cities, 2021, King County, WA

*Cities with case counts less than 5 cases are suppressed*

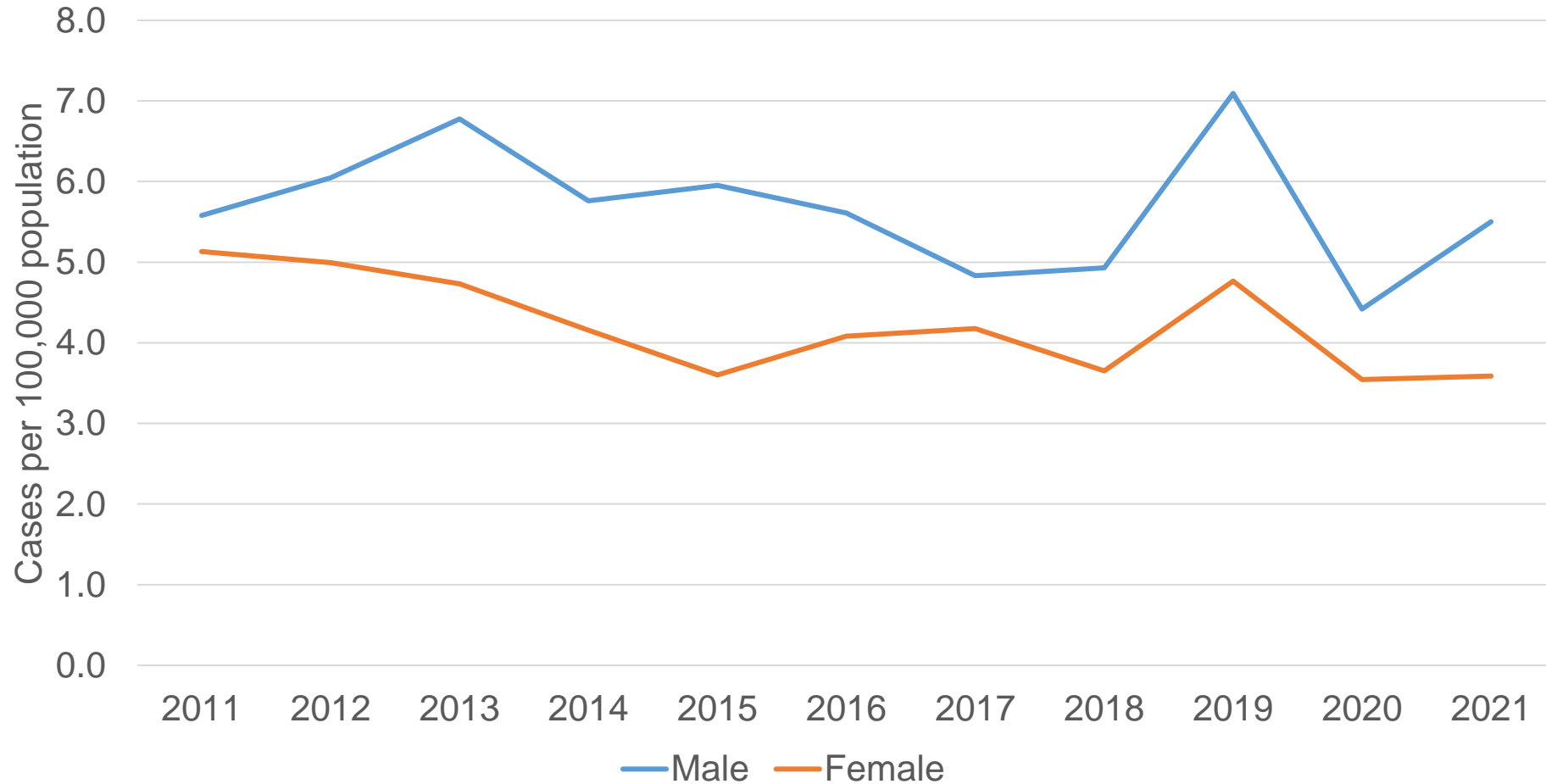


TB Case Rate  
by City Relative  
to King County  
Case Rate,  
2021, King  
County, WA

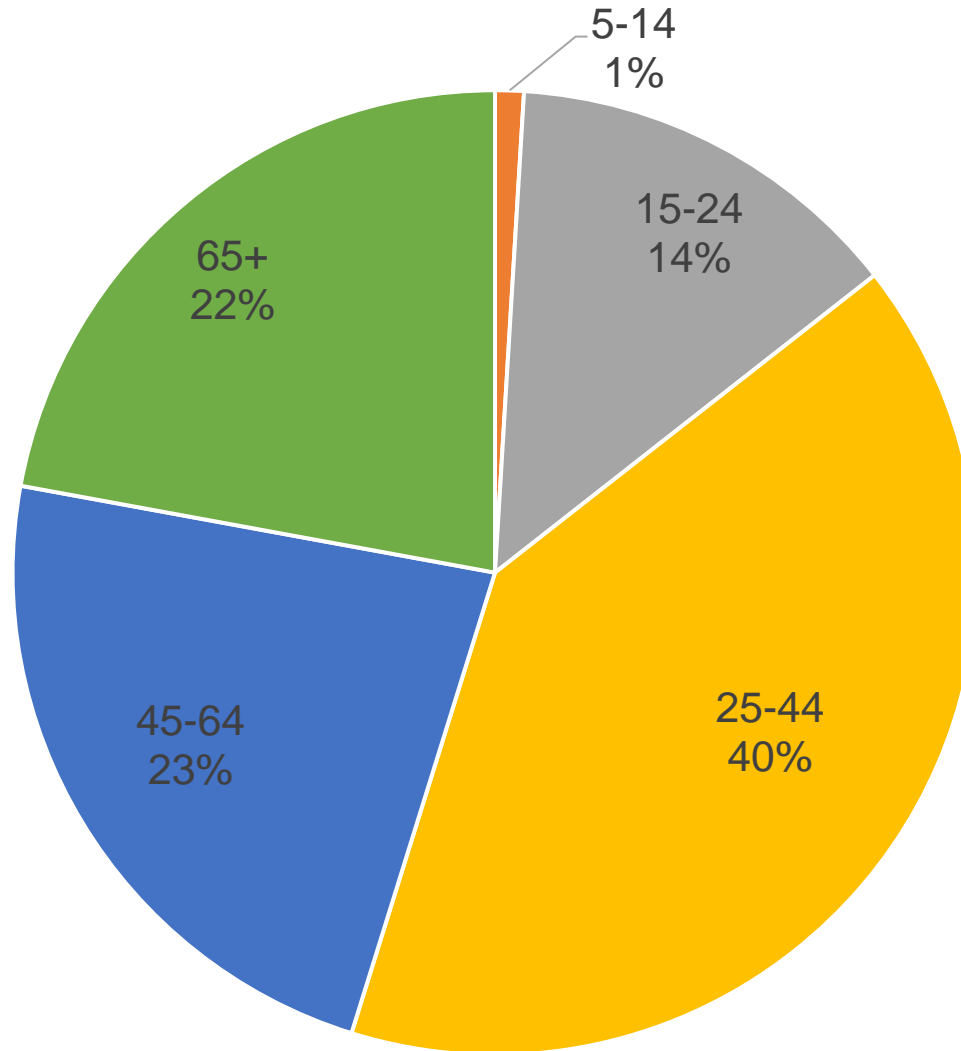
# Proportion of TB Cases by Sex, 2021, King County, WA



# TB Case Rates by Sex, 2011-2021, King County, WA

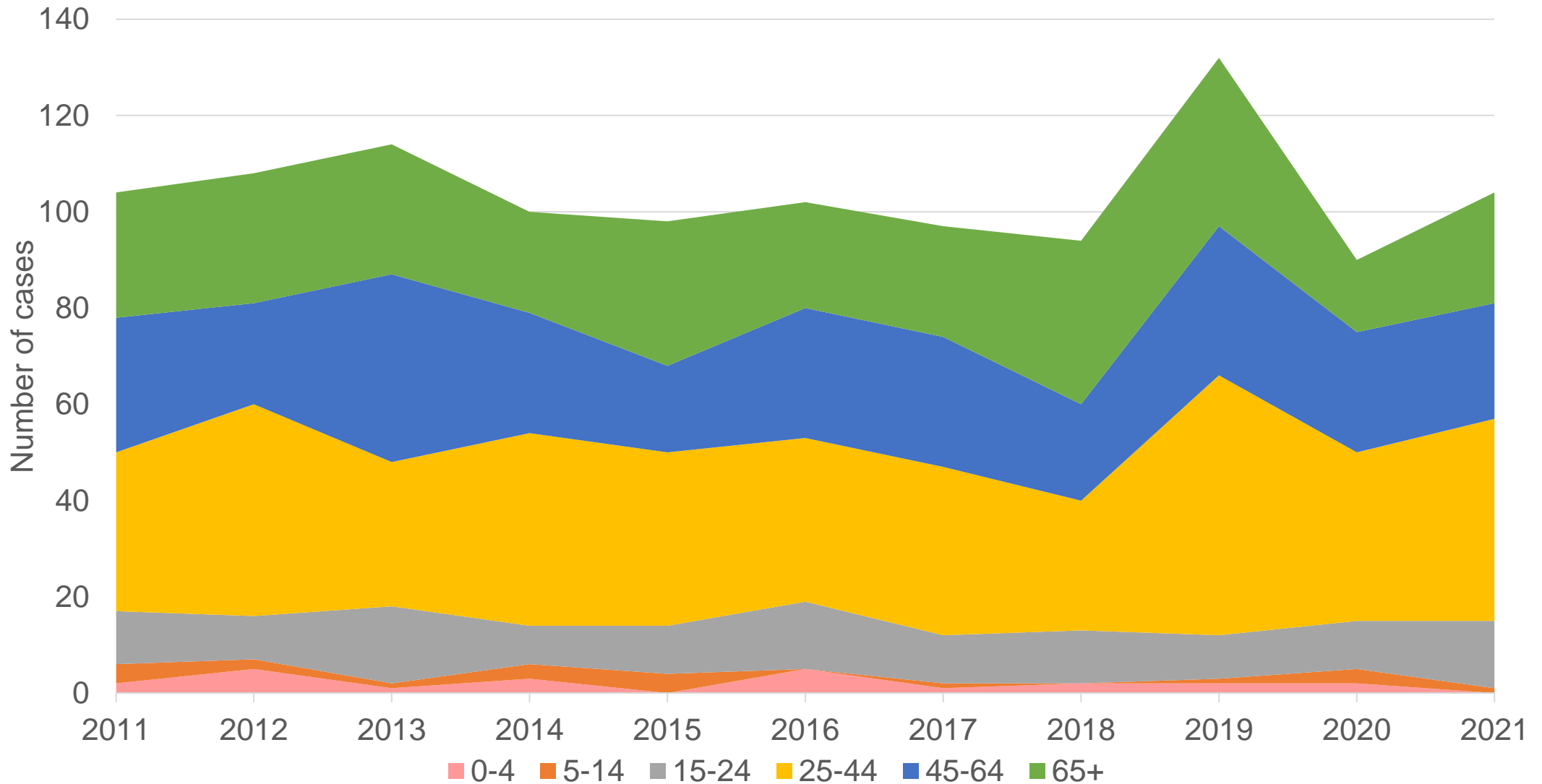


# Proportion of TB Cases by Age Group (years), 2021, King County, WA

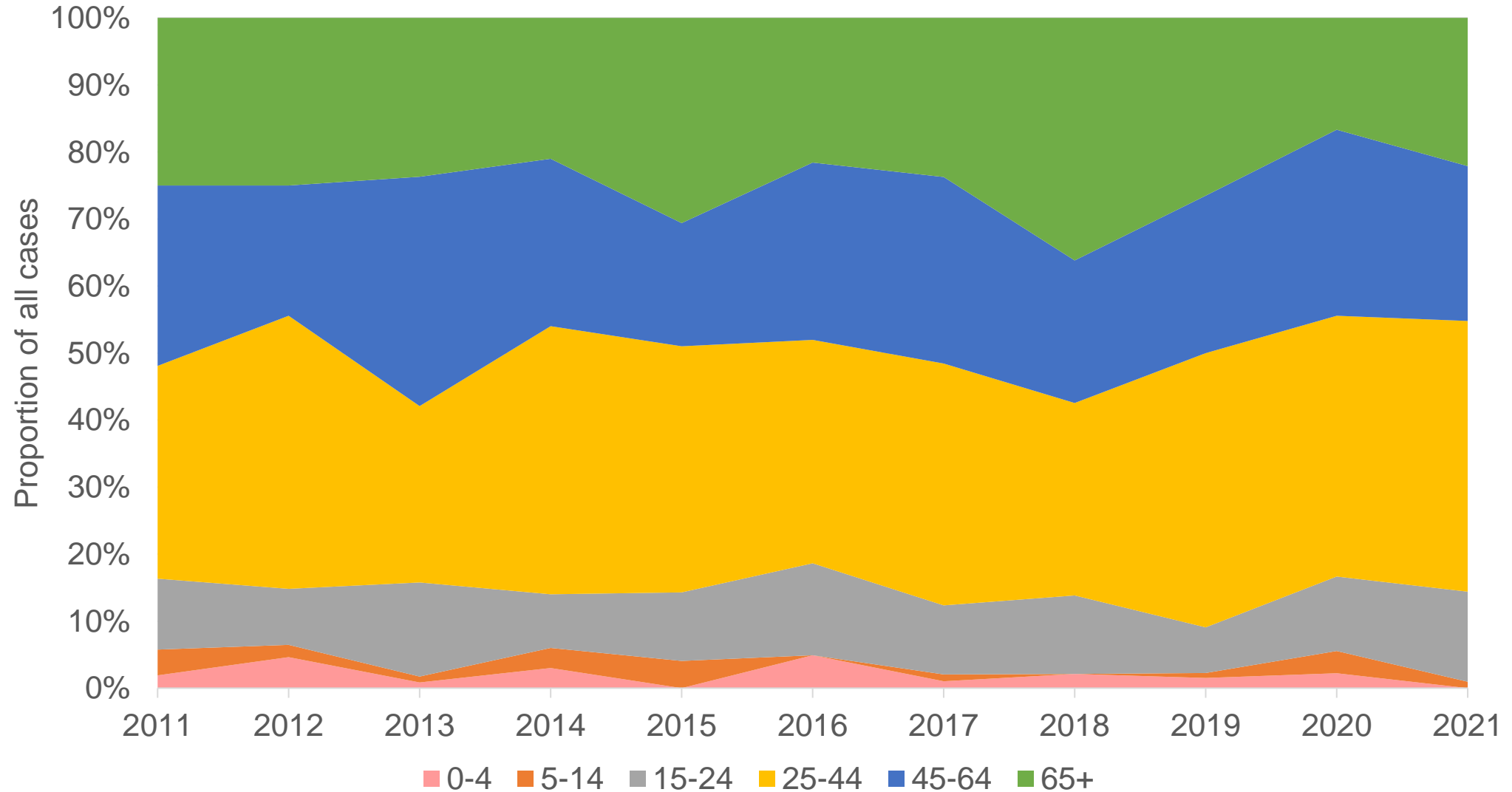




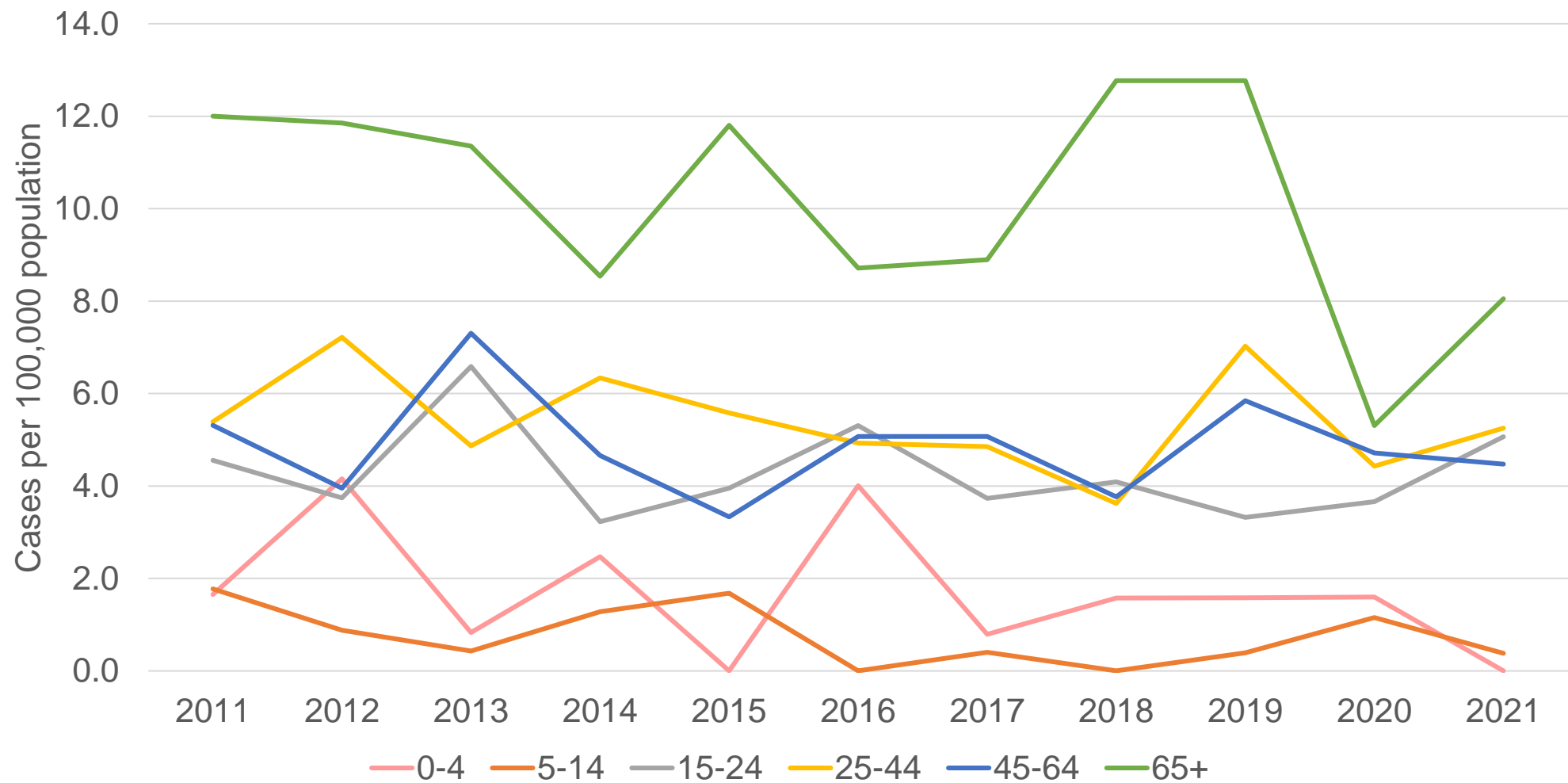
# Reported TB Cases by Age Group (years), 2011-2021, King County, WA



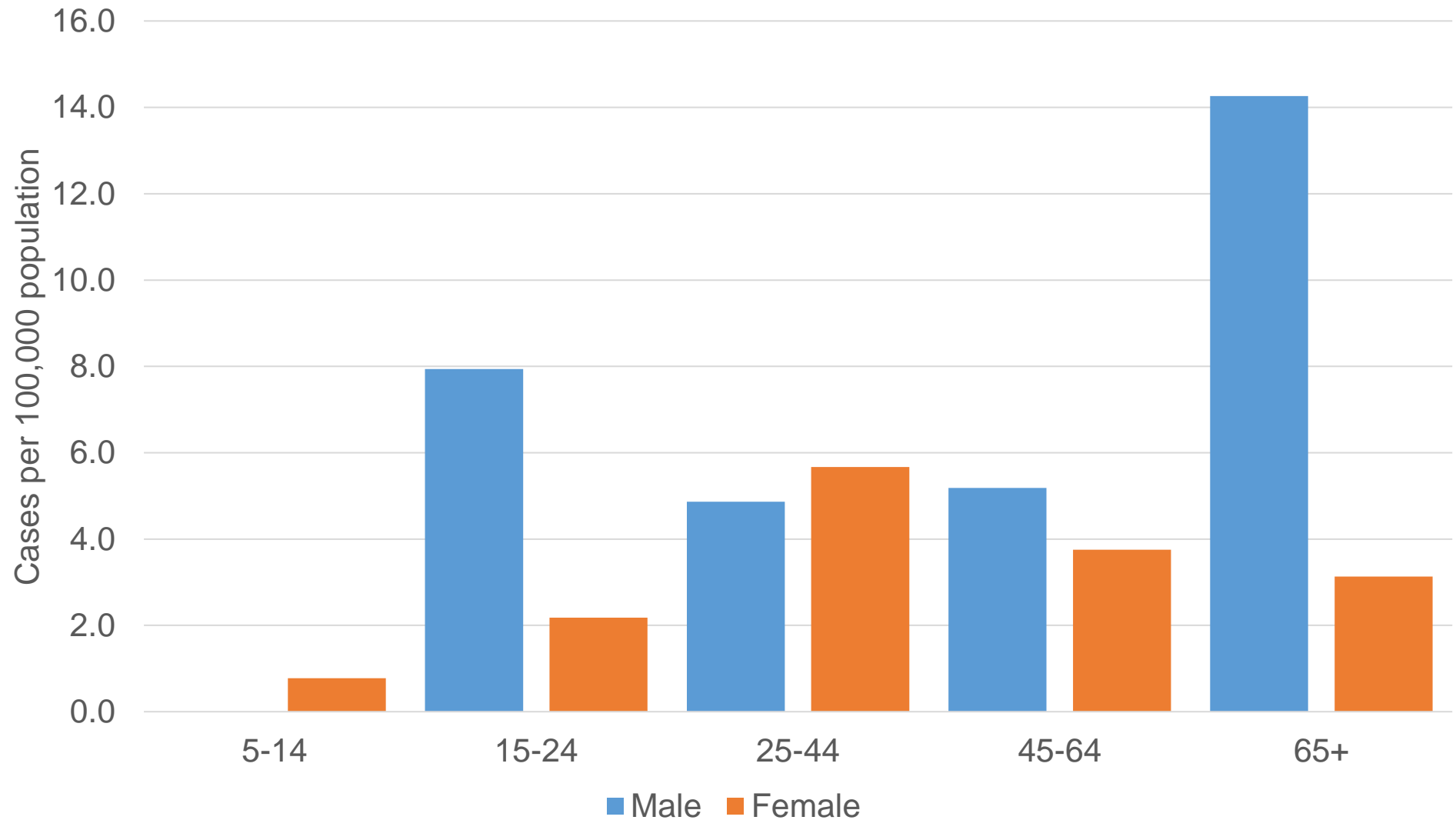
# Proportion of TB Cases by Age Group (years), 2011-2021, King County, WA



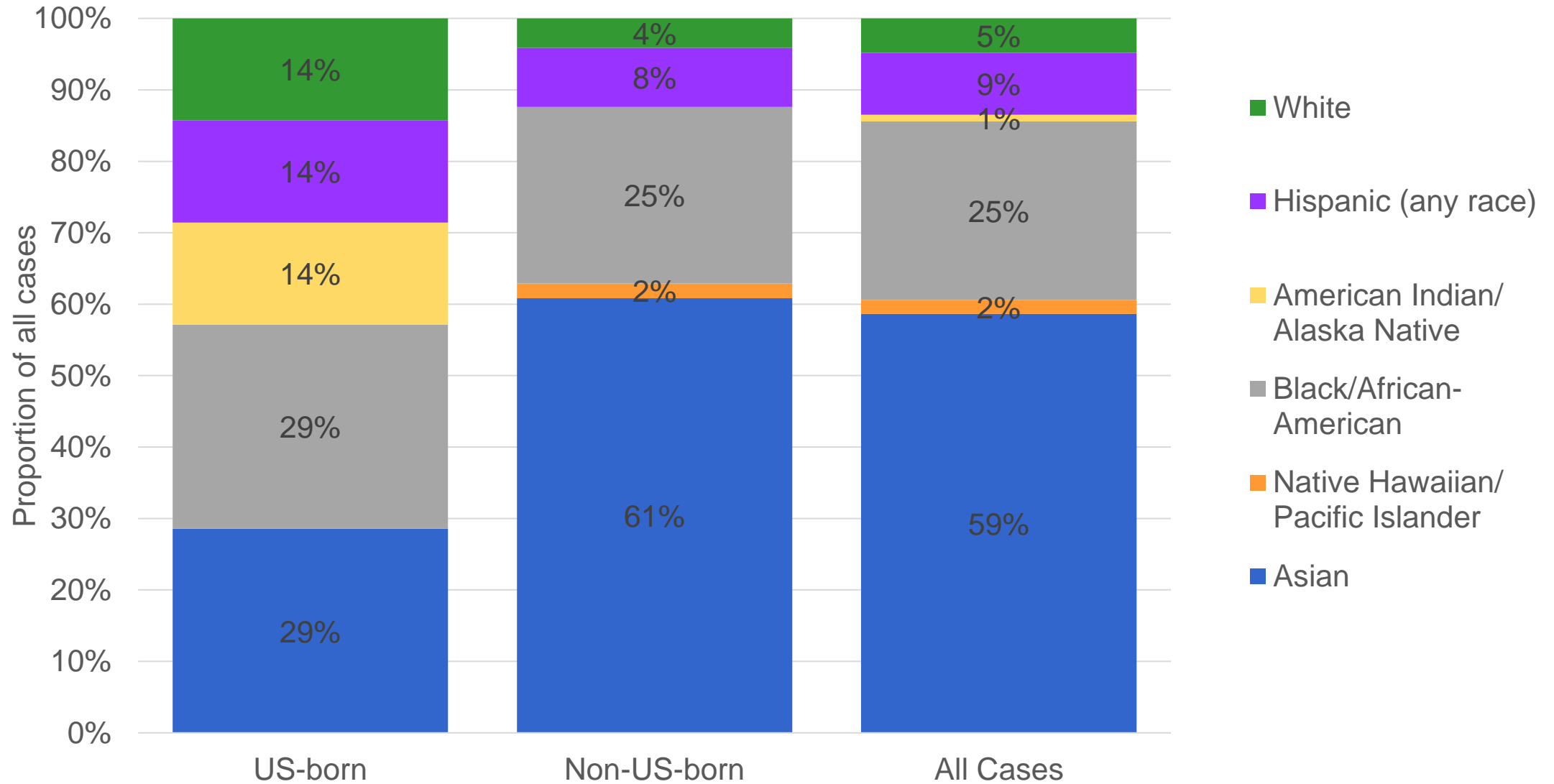
# TB Case Rates by Age Group (years), 2011-2021, King County, WA



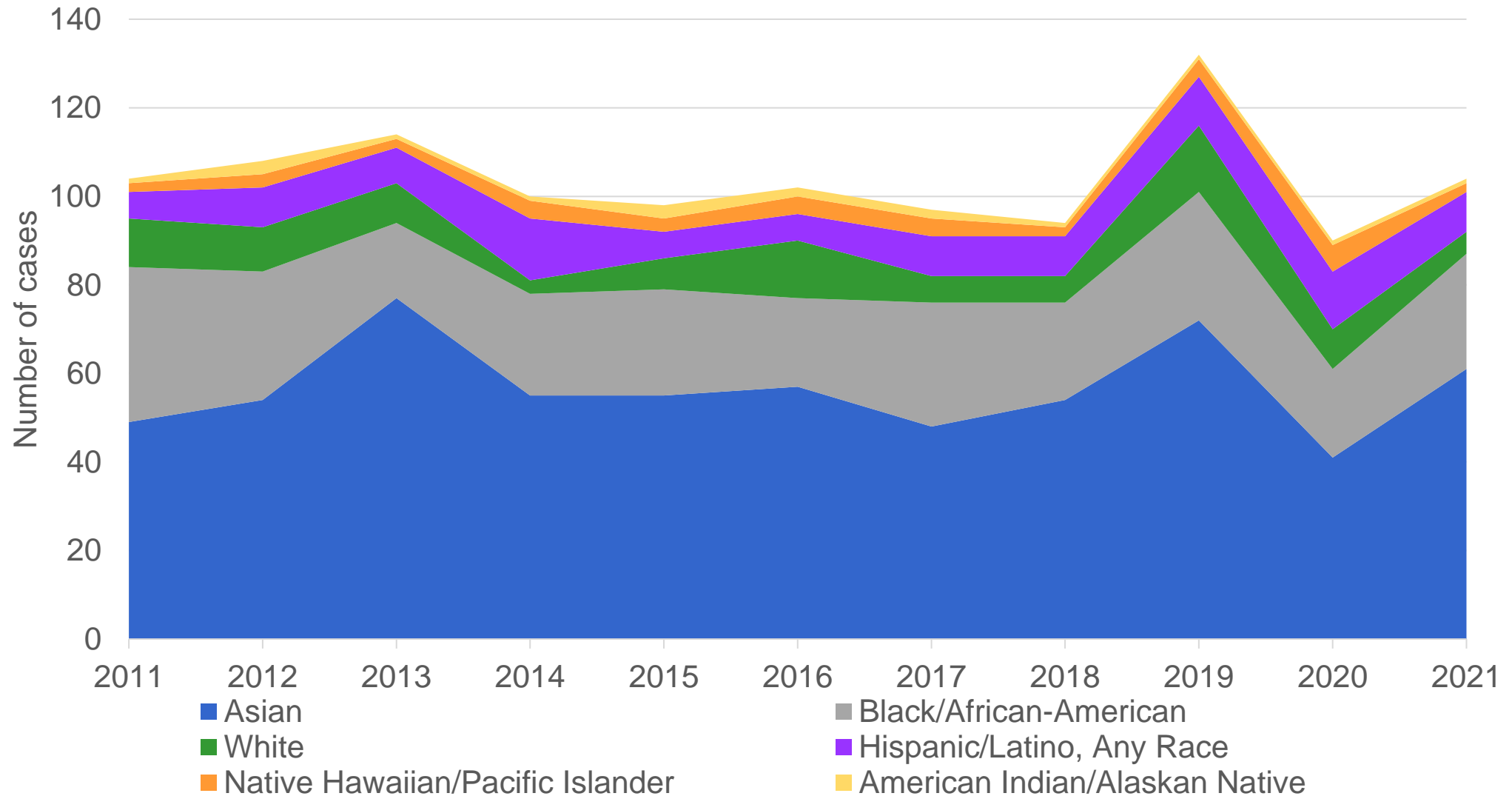
# TB Case Rates by Age Group (years) and Sex, 2021, King County, WA



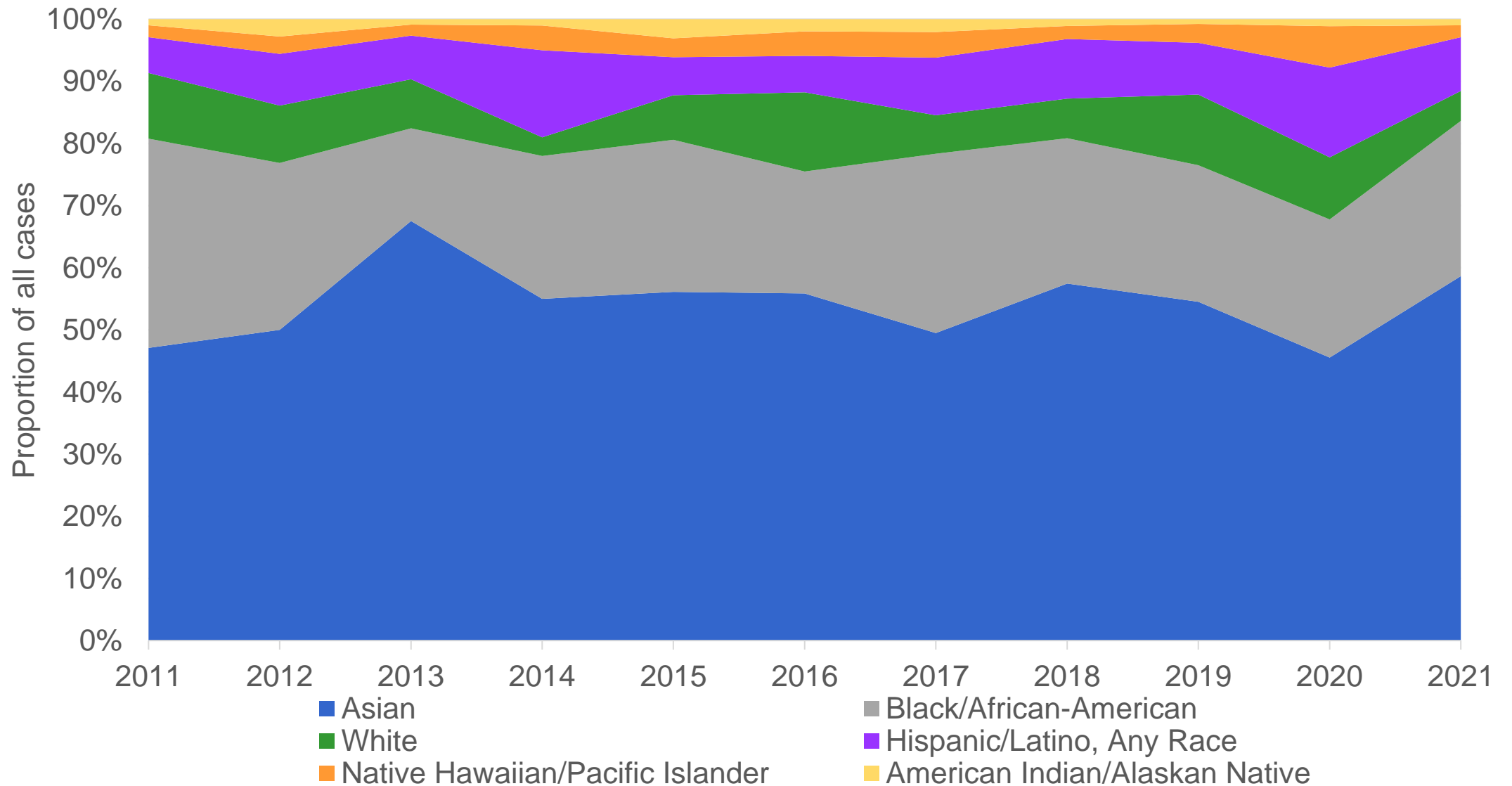
# Proportion of TB Cases by Origin and Race/Ethnicity, 2021, King County, WA



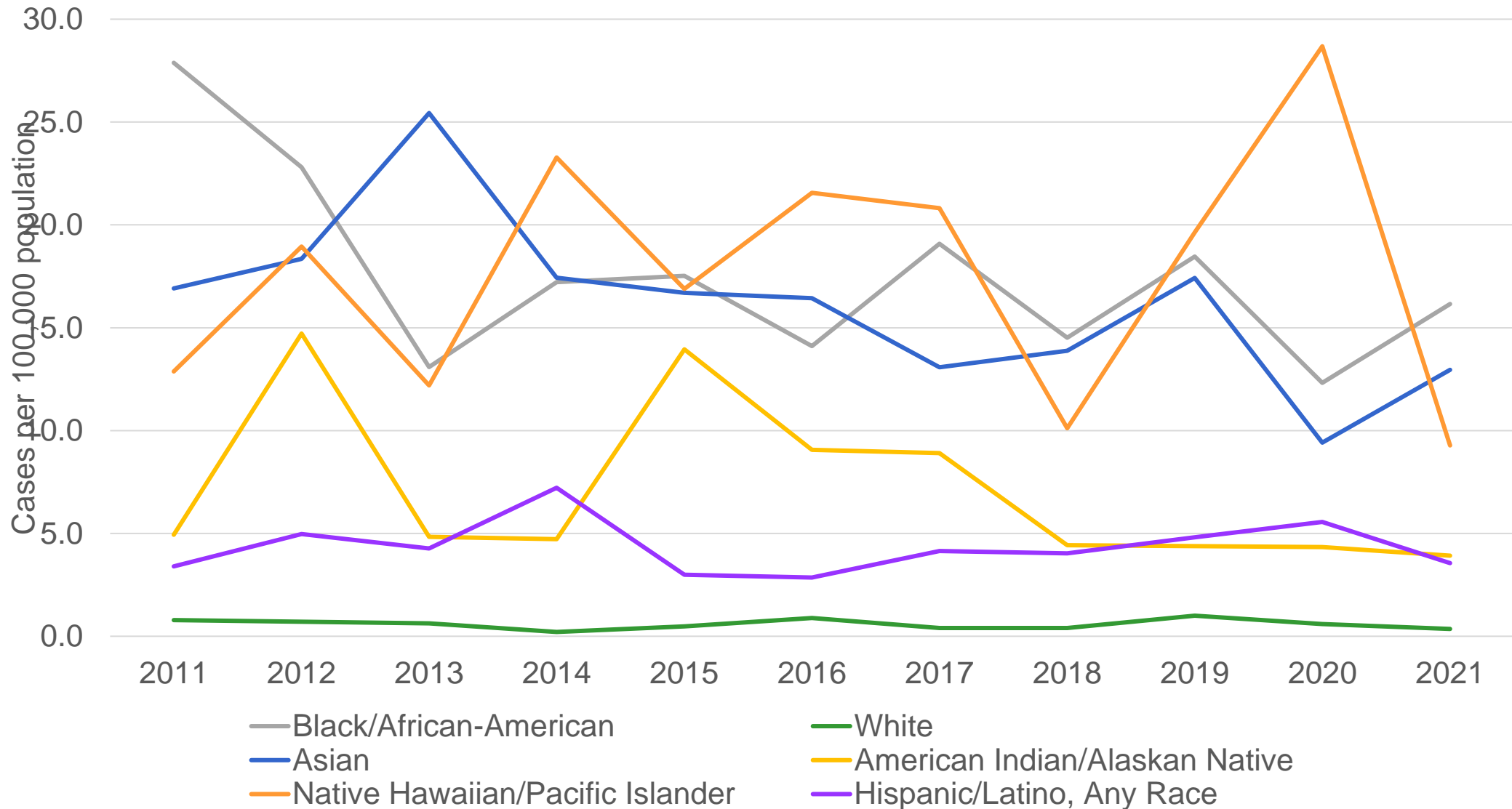
# Reported TB Cases by Race/Ethnicity, 2011-2021, King County, WA



# Proportion of Reported TB Cases by Race/Ethnicity, 2011-2021, King County, WA

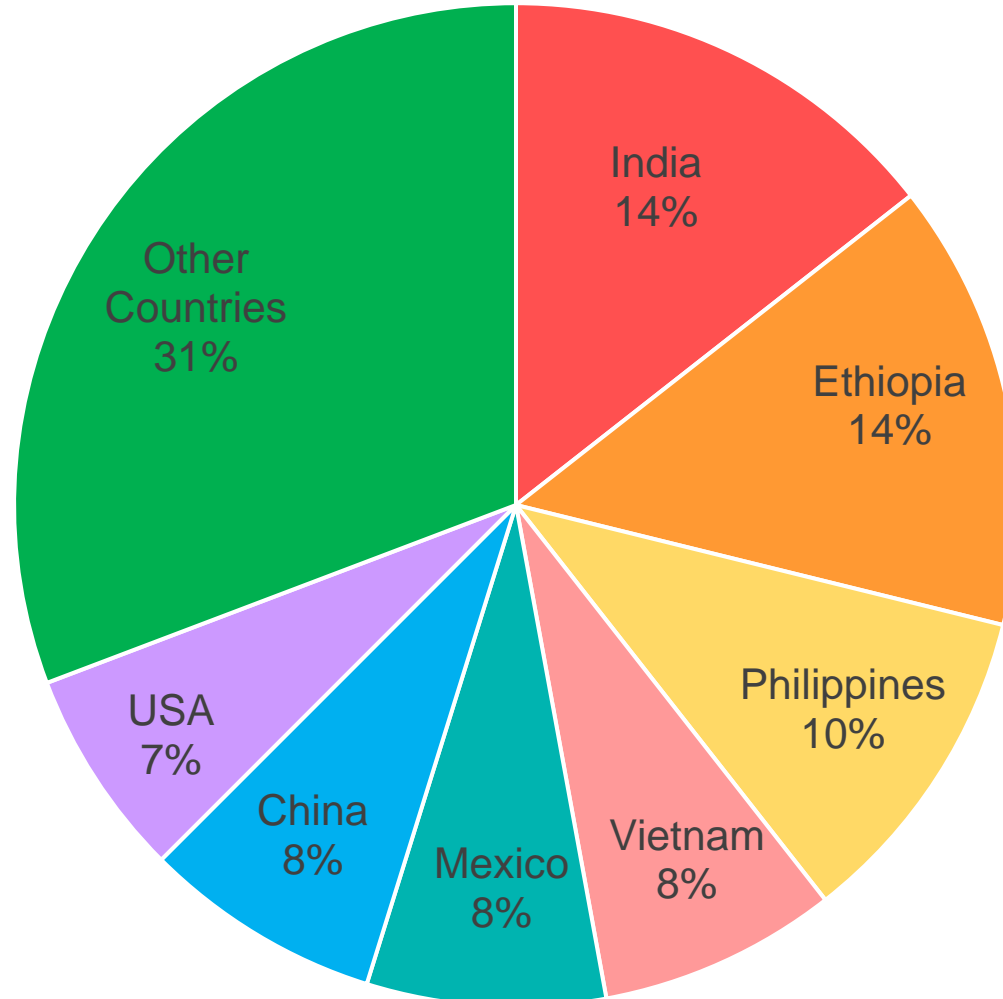


# TB Case Rates by Race/Ethnicity, 2011-2021, King County, WA

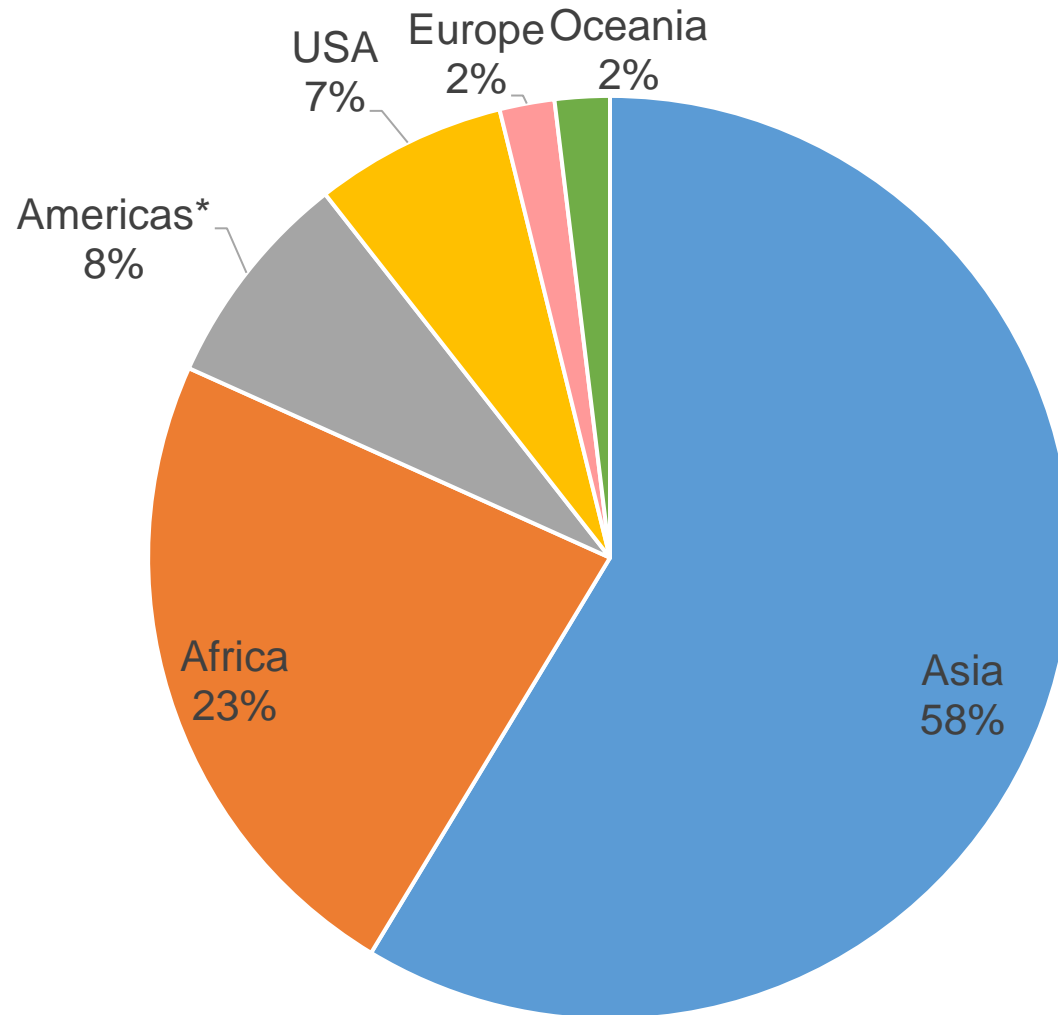




# Proportion of TB Cases by Country of Birth, 2021, King County, WA

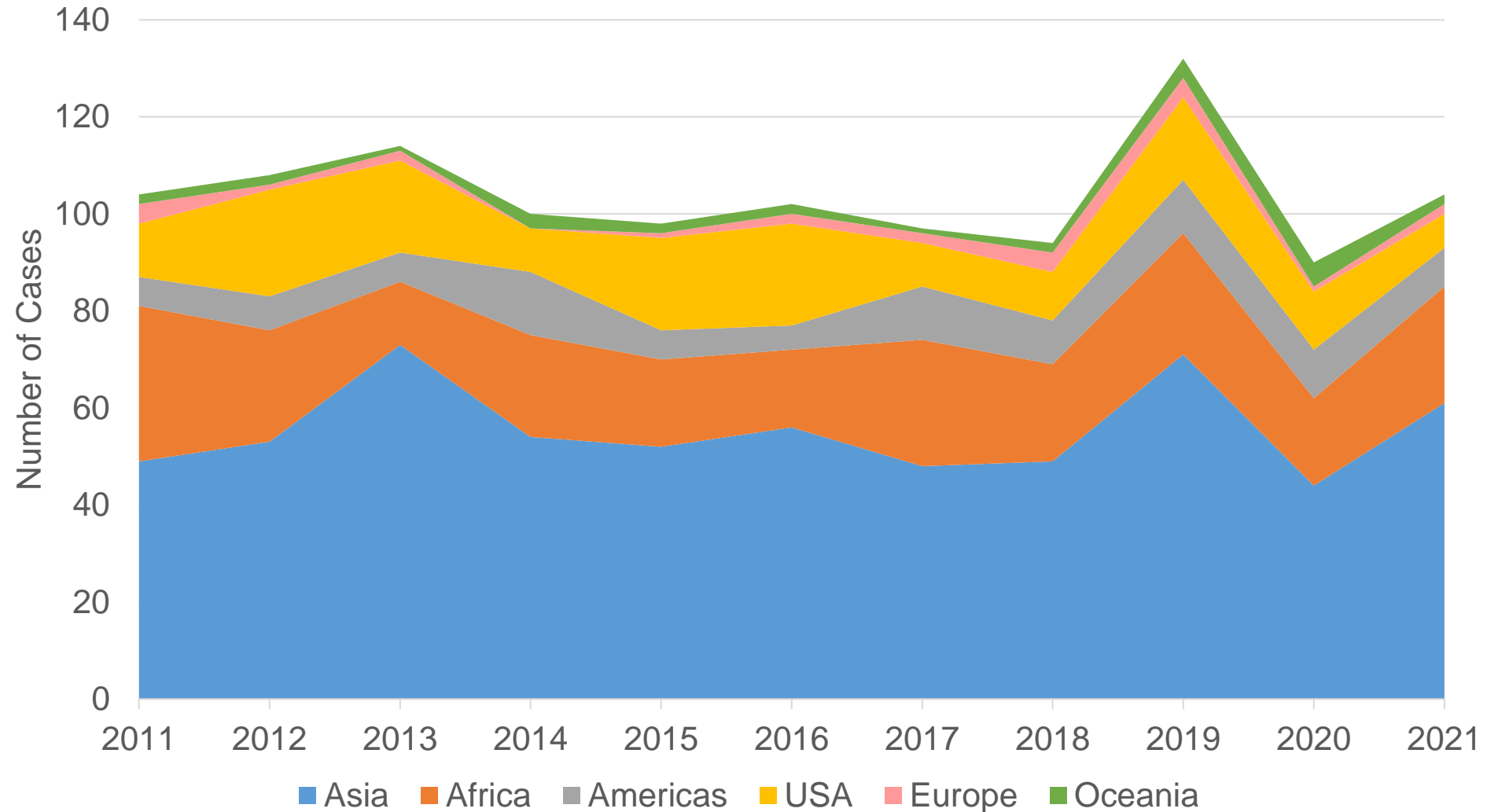


# Proportion of TB Cases by Region of Origin, 2021, King County, WA

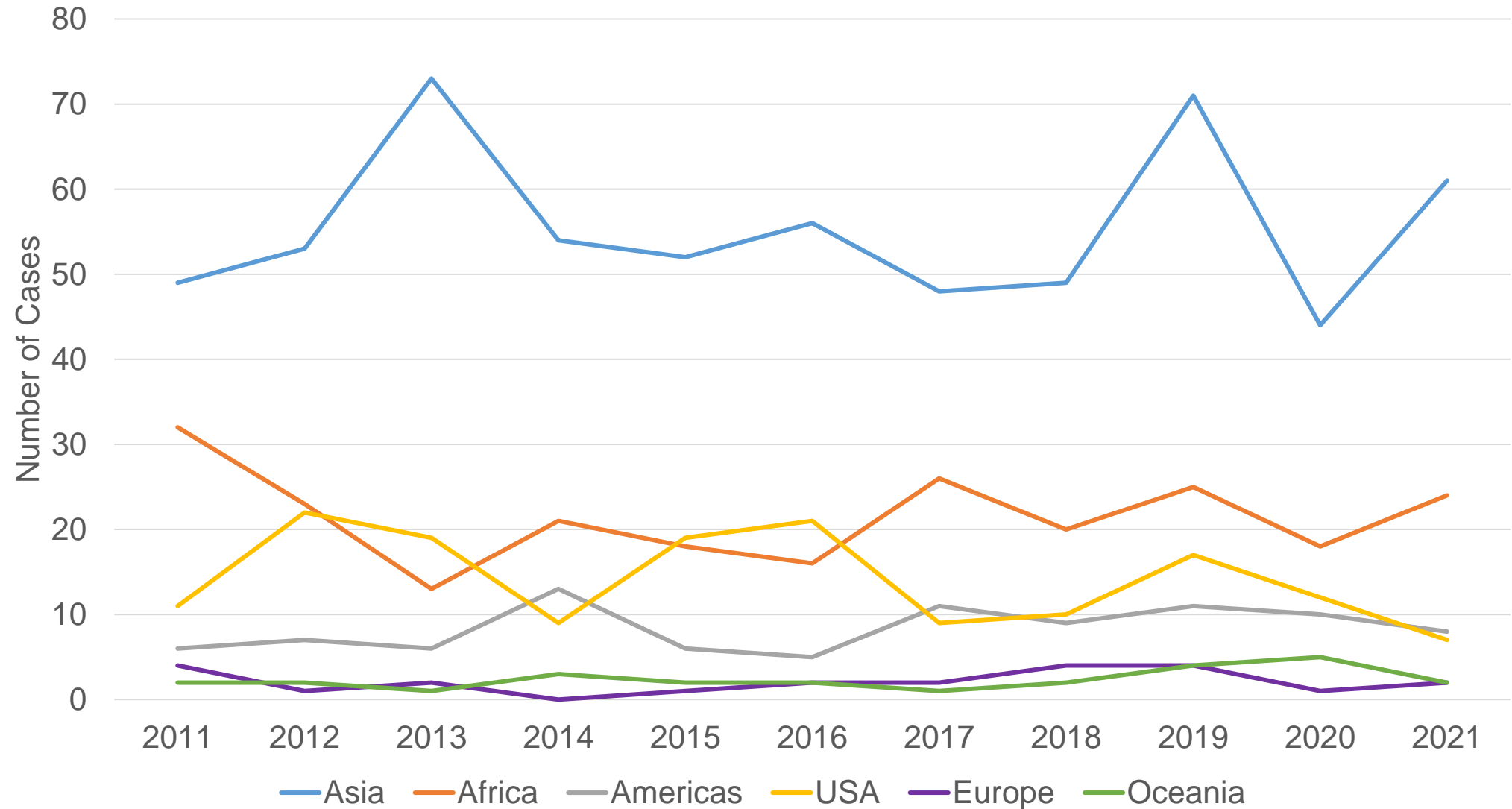


*\*Excludes USA*

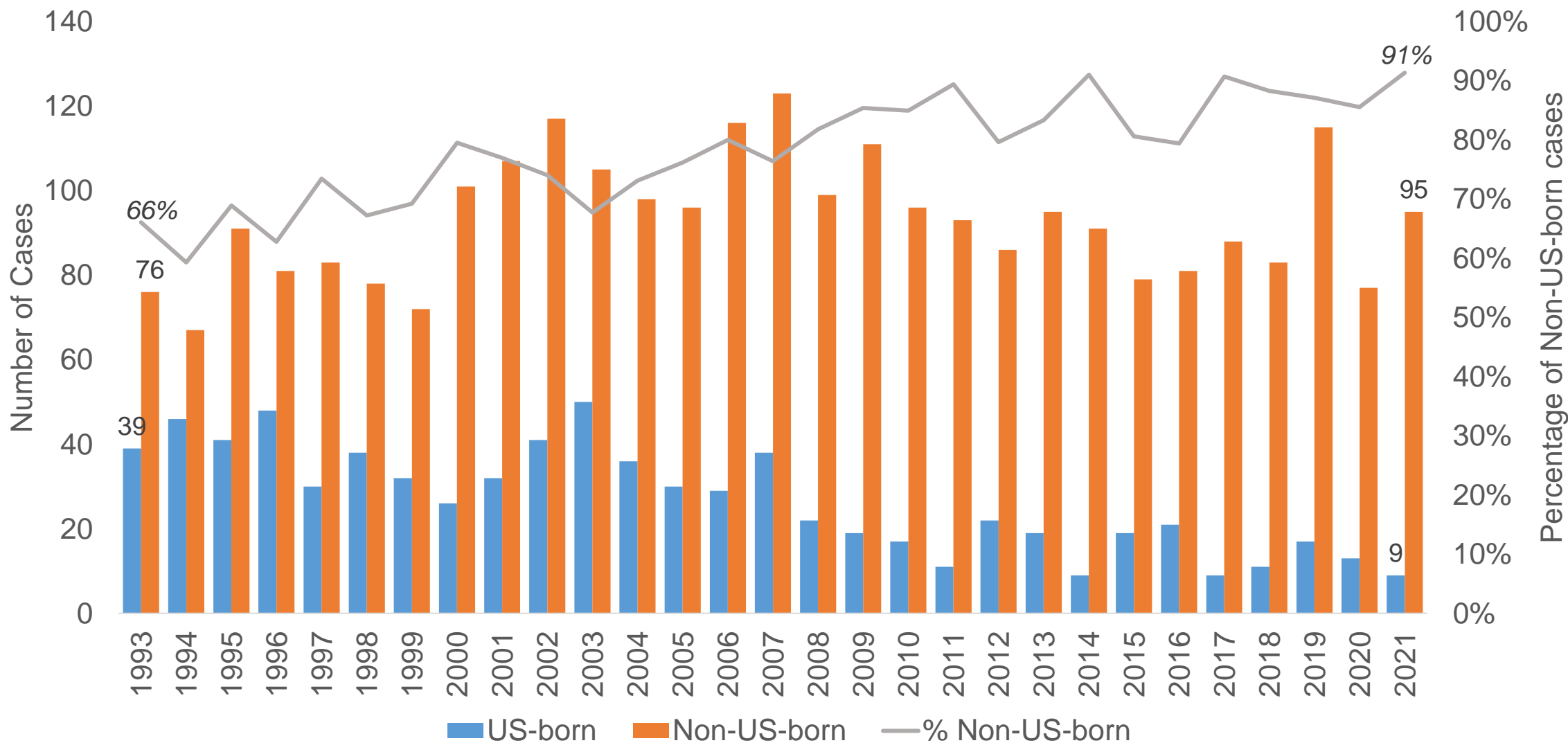
# Region of Origin Among Persons Reported with TB, 2011-2021, King County, WA



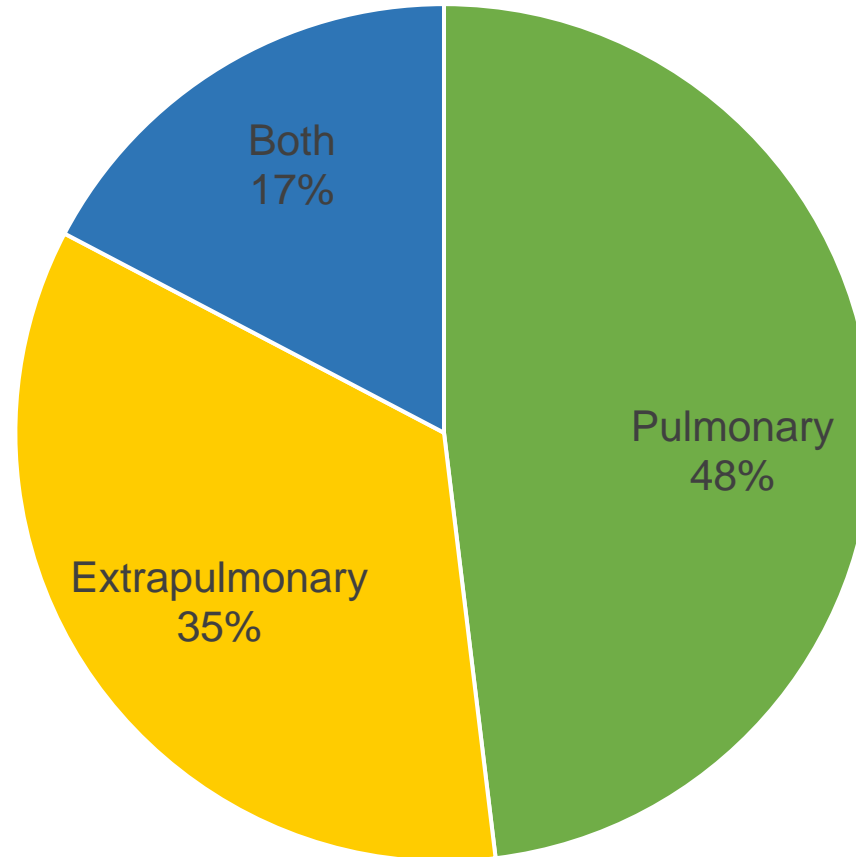
# Region of Origin Among Persons Reported with TB, 2011-2021, King County, WA



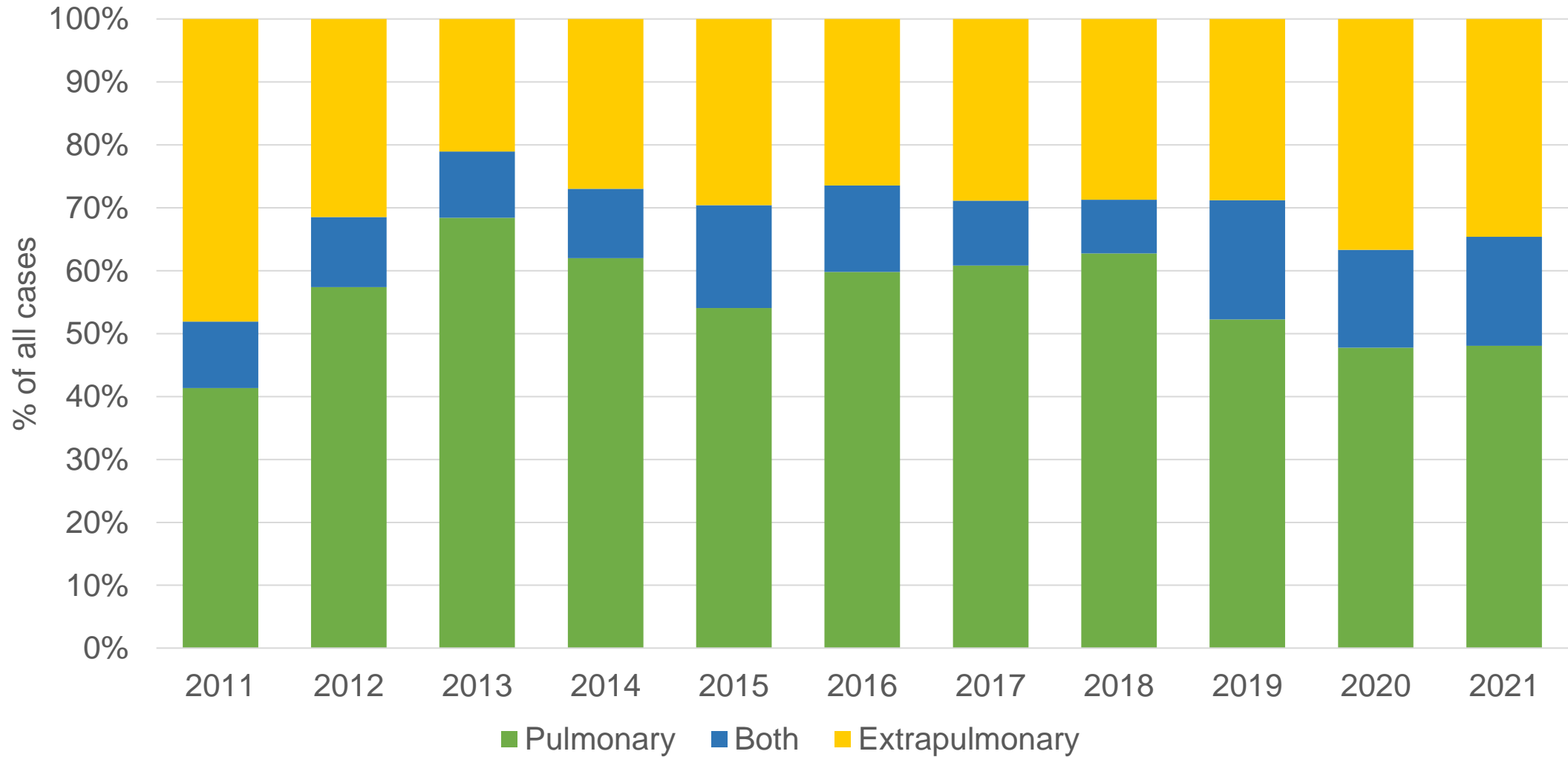
# Trends in TB Cases among Non-US-born persons, 1993-2021, King County, WA



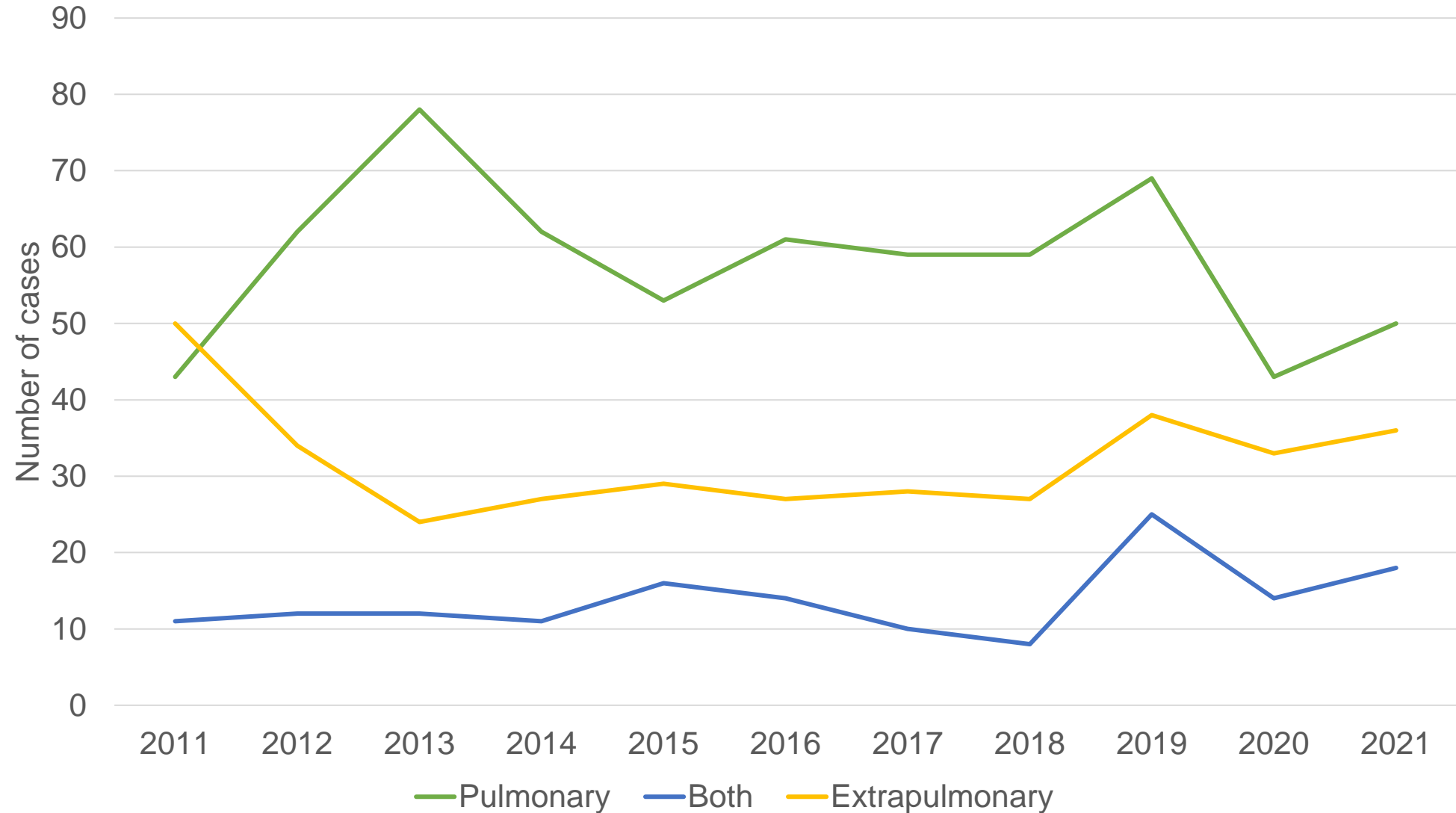
# Proportion of TB Cases by Disease Site, 2021, King County, WA



# Proportion of TB Cases by Disease Site, 2011-2021, King County, WA

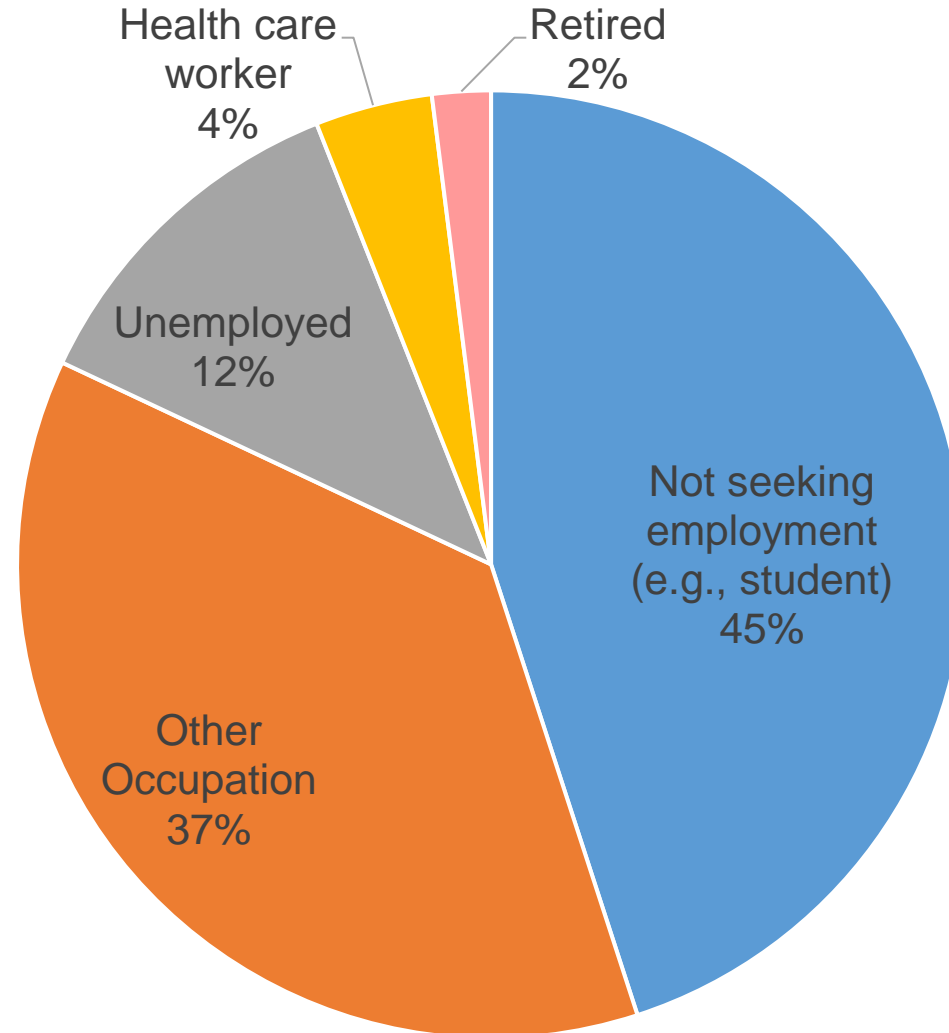


# Reported TB Cases by Disease Site, 2011-2021, King County, WA

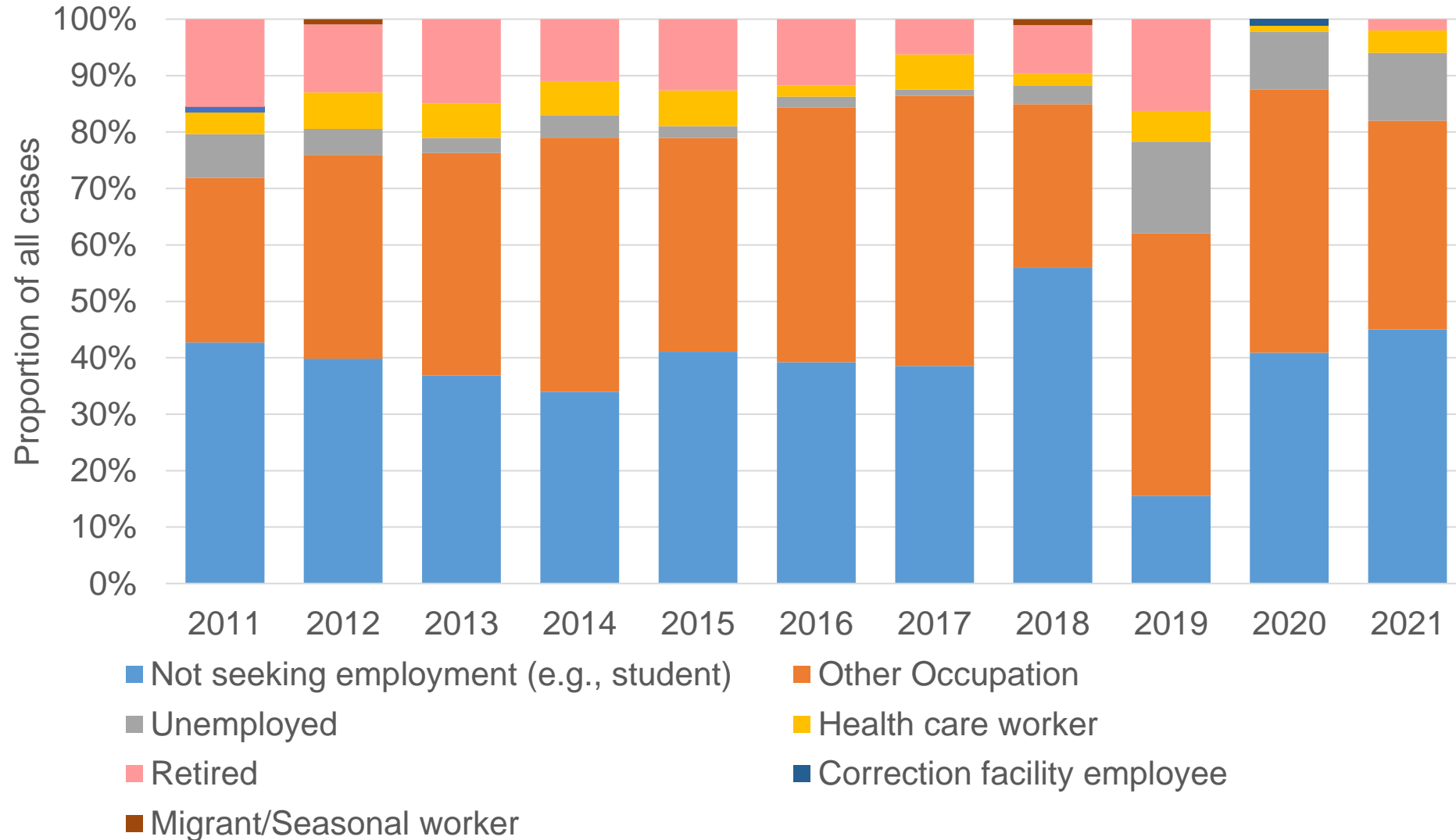




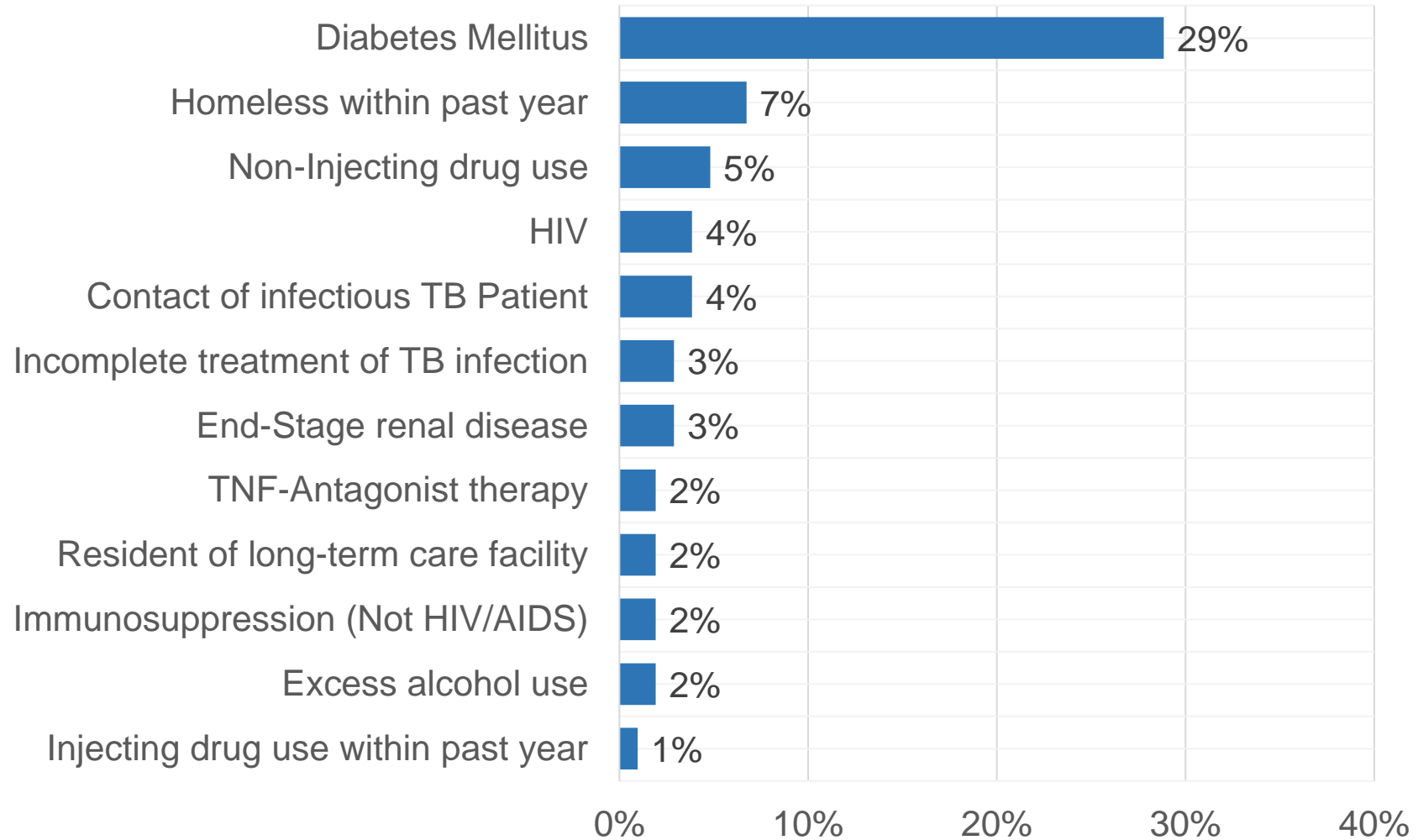
# Proportion of TB Cases by Occupation in Past Year, 2021, King County, WA



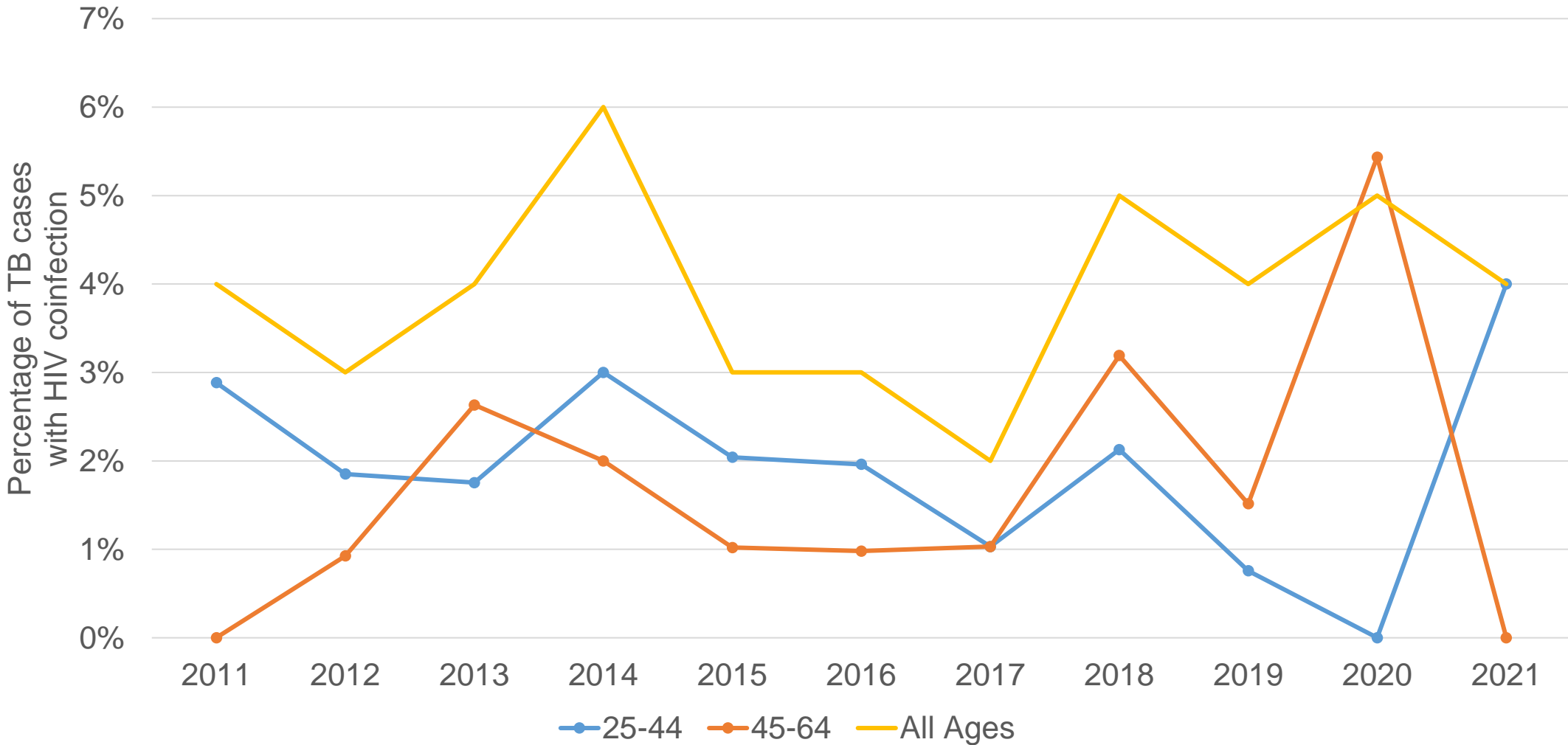
# Proportion of TB Cases by Occupation in Past Year, 2011-2021, King County, WA



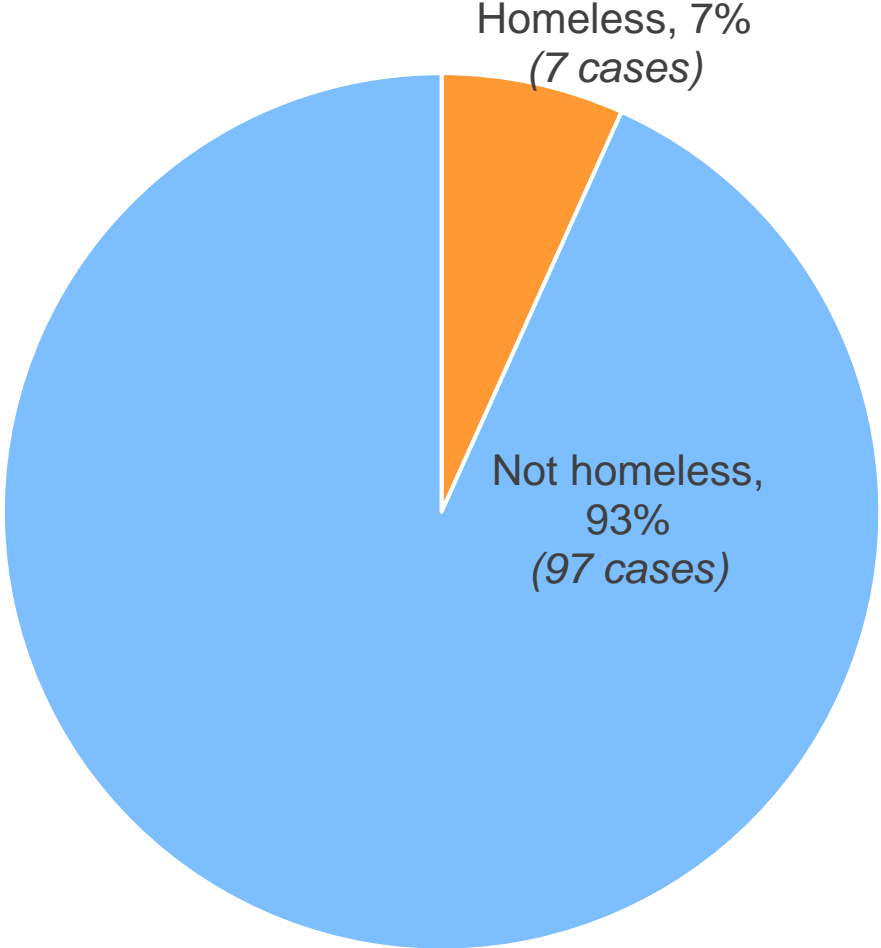
# Risk Factors Among Persons Reported with TB, 2021, King County, WA



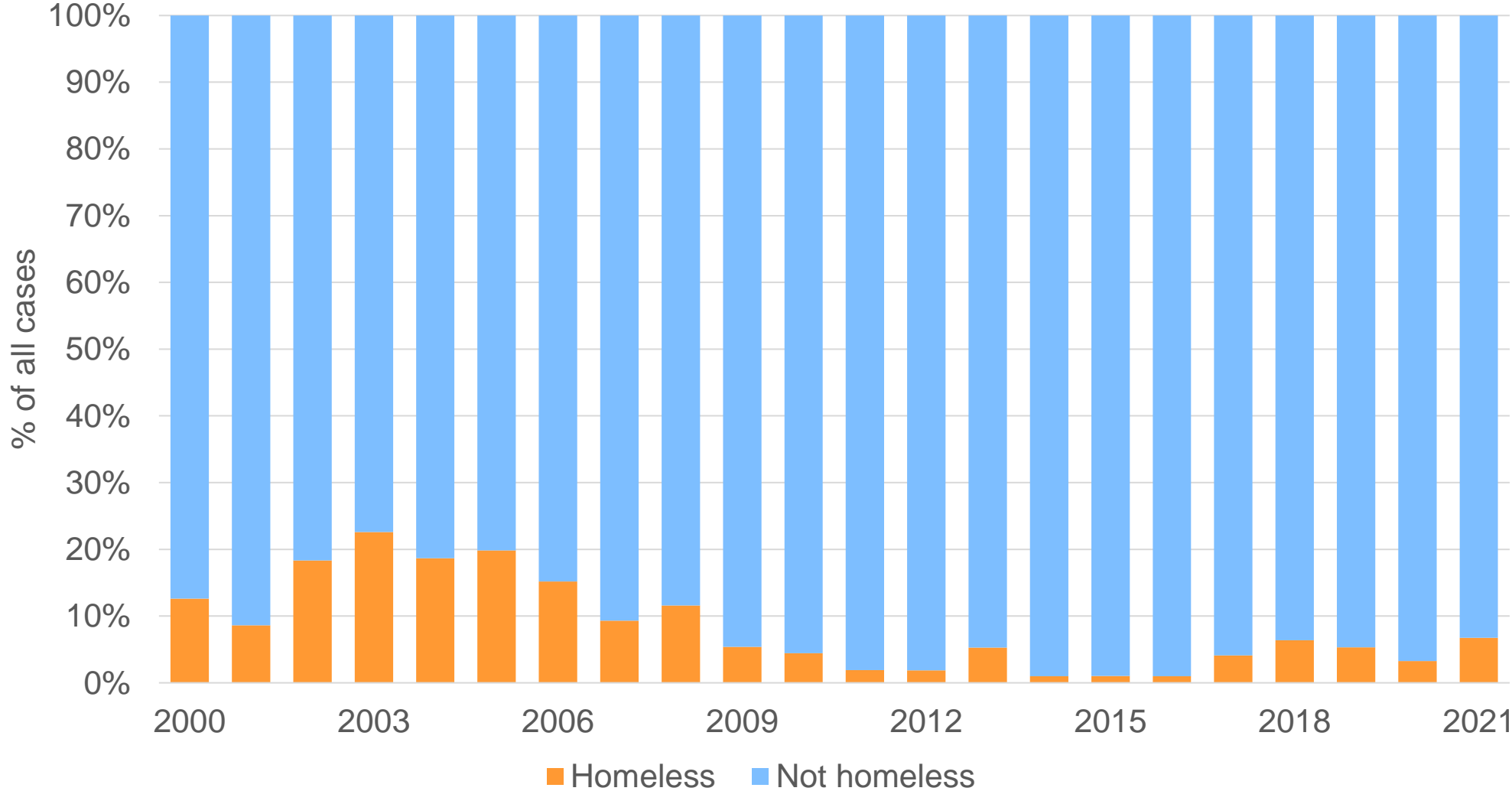
# HIV Coinfection by Age Among Persons Reported with TB, 2011-2021, King County, WA



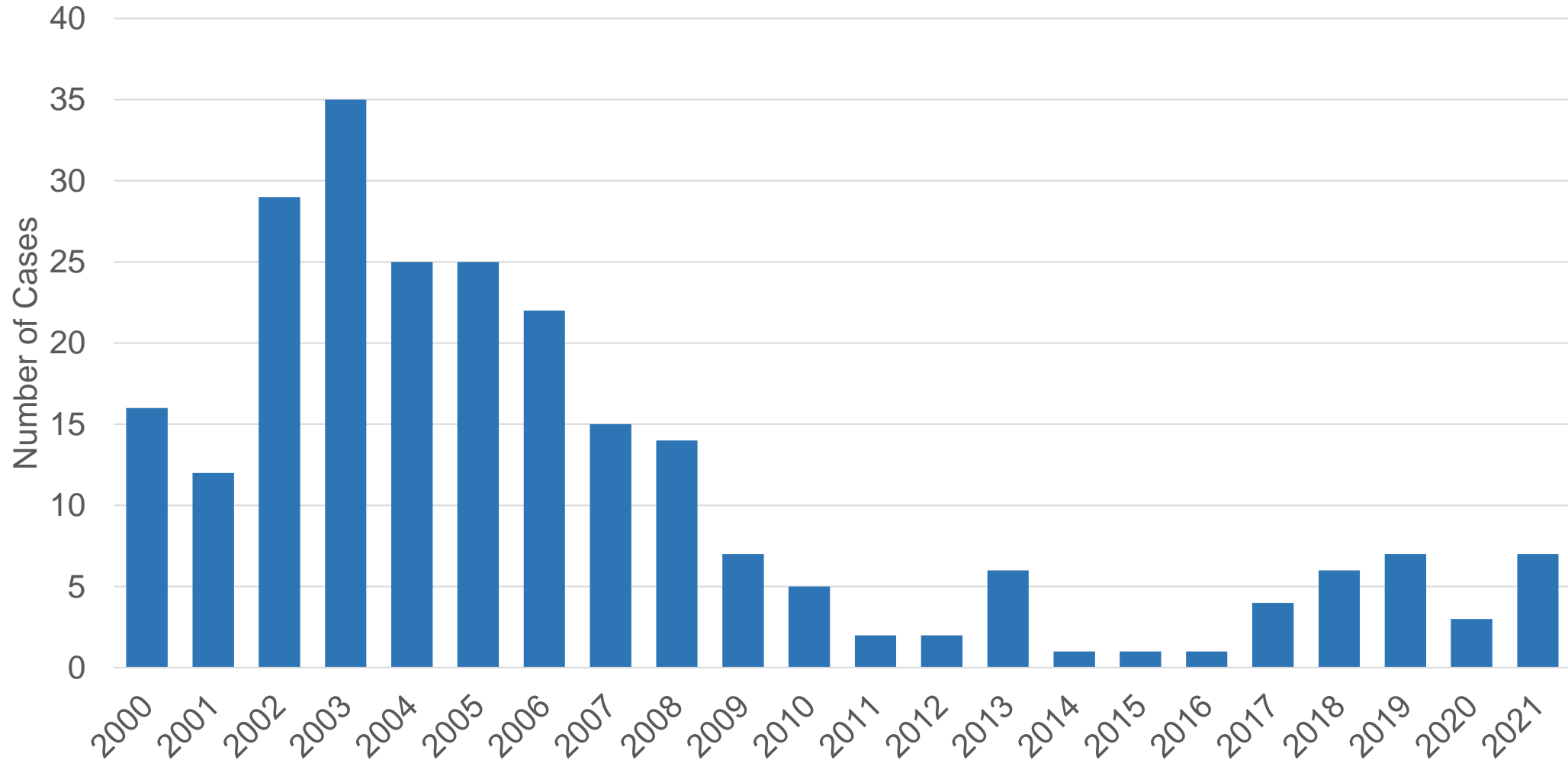
# Proportion of TB Cases Experiencing Homelessness in Past 12 months, 2021, King County, WA



# Proportion of TB Cases Experiencing Homelessness in Past 12 months 2000-2021, King County, WA



# Number of TB Cases Experiencing Homelessness in Past 12 months 2000-2021, King County, WA



# Sources

1. In Washington State health care providers, laboratories and health care facilities are legally required to notify public health authorities at their local health jurisdiction of suspected or confirmed cases of tuberculosis. Case counts are calculated using these reports.
2. Rates are calculated with population data from the Washington State Office of Financial Management with the exception of foreign born rate.  
<http://www.ofm.wa.gov/pop/>
3. Rate of foreign born cases is calculated with population data from the U.S. Census Bureau: State and County QuickFacts.  
<https://www.census.gov/quickfacts>
4. Region of Origin Specifications  
<https://unstats.un.org/unsd/methodology/m49/>