



King County

Department of Judicial Administration
Catherine Cornwall
Director and Superior Court Clerk
(206) 296-9300 (206) 296-0100 TTY/TDD

King County Superior Court

Quarterly Statistical Report

Second Quarter 2024

Department of Judicial Administration
Prepared by: Shiquan Liao, Ph.D., Statistician

July 15, 2024

Report #: QTR-2024-Q2

Seattle Courthouse
516 Third Avenue Room E609
Seattle, WA 98104-2386

Maleng Regional Justice Center
401 Fourth Avenue North Room 2C
Kent, WA 98032-4429

*Clark Children and Family
Justice Center*
1211 East Alder Room 3015
Seattle, WA 98122-5598

Quarterly Report Summary

King County Superior Court

Highlights

- **Criminal Cases.** The criminal filings in the first half of 2024 were 2,599 cases, showing a 2.1% decrease (-2.1%) from the same time in 2023. MRJC accounted for 44% of the criminal cases filed in 2024. The resolutions of criminal cases in 2024 matched the filing pace, totaling 2,587 cases. The pending criminal caseload has stayed around 4,000 cases in the last 12 months. At the end of June 2024, 4,069 criminal cases (excluding RALJ) remained active. Of the 4,069 pending criminal cases, 40% were the MRJC cases.
- **Civil Cases.** Filings in civil cases (case type 2) continued an upwards trend in the last 4 quarters. The filings in case type 2 (general civil) in the first 6 months of 2024 were significantly higher than in 2023, showing a 37.3% increase from 2023. The increase in civil filings was primarily due to the rise in unlawful detainer cases and civil protection petitions. The civil resolutions were lower than the filing volume in the same period, resulting an increase in active civil caseload. The pending civil caseload was 9,125 cases at the end of June 2024, 2,001 cases more than a year ago (+37.3%). The MRJC had 37% of the pending civil caseload at the end of June of 2024.
- **Domestic Cases.** Domestic case (case type 3) filings in the first half of 2024 were comparable with that in 2023, showing only 2% increase. A total of 3,335 domestic cases were filed in the first 6 months of 2024, and 37% were filed in the MRJC. The resolutions of domestic cases fell behind the filing volume in 2024. At the end of June 2024, the pending domestic caseload was 4,664 cases, with 40% being the MRJC cases.
- **ITA Cases.** The filings of ITA cases in 2024 remained at a high level, but seemed to reach a plateau. A total of 2,747 ITA cases were filed in the first half of 2024, just slightly lower than the same period in 2023 (-4.4%). There were 414 ITA cases remaining to be adjudicated at the end of June 2024.
- **Juvenile Dependency/Termination (DEP/TER) and At-risk Youth (ARY)/Child-in-Need of Service (CHINS) Cases.** In 2024, termination filings were down about 35% from 2023, while dependency filings were essentially the same as in 2023. On the other hand, filings in ARY/CHINS/others and truancy were up 24% and 8% respectively from 2023. At the end of June 2024, the numbers of cases pending disposition in the non-Offense juvenile categories were: 246 dependency cases, 106 termination cases, 143 ARY/CHINS/Other cases, and 2,081 truancy cases.
- **Juvenile Offense Cases.** The juvenile offense filings in 2024 increased significantly from 2023, with 468 juvenile offense cases filed in the first half of 2024 and 25% increase from the same time in 2023. The resolution pace for juvenile offense cases did not match the filing pace in the year. At the end of June 2024, there were 448 pending juvenile offense cases, the highest volume since the second quarter of 2021.
- **Pro Tem Use.** In the first two quarter of 2024, the daily Pro Tem use by the court was 4.2 FTEs and 5.5 FTEs on average, respectively.
- **Post-resolution Modifications (Table 1-A).** In the first 6 months of 2024, there were 247 post-resolution modifications filed (both parenting plan and relocation modifications) year-to-date.
- **Active re-opened cases and family law modification cases (Table 4-A).** At the end of June 2024, 922 re-opened cases and 398 family law modification cases remained active.

Table 1. Year-to-Date Filing Activity
King County Superior Court

Reporting Category	Year-to-Date (Jan – Jun) and Annual Filing Activity ⁽¹⁾					2024-2023 change (+ means “increase”)		% of 2024 Total Filing ⁽²⁾
	2020	2021	2022	2023	2024	Cases	Percentage	
Total (incl. RALJ)								
Year-to-Date Filing	21417	20508	22311	24566	27990	+3424	+13.9%	
Annual Filing	43103	40249	44424	49172				
Criminal (excl. RALJ)								
Year-to-Date Filing	2777	2246	2459	2655	2599	-56	-2.1%	9.3%
Annual Filing	5877	4658	4956	4896				
Civil (excl. RALJ)								
Year-to-Date Filing	7940	7019	7680	8825	12113	+3288	+37.3%	43.3%
Annual Filing	15352	13624	15749	19776				
Domestic								
Year-to-Date Filing	2861	3115	3051	3271	3335	+64	+2.0%	11.9%
Annual Filing	6163	6184	5999	6369				
Probate								
Year-to-Date Filing	3235	4003	3996	4041	4008	+47	+1.2%	14.6%
Annual Filing	6766	7478	7747	7565				
Guardianship								
Year-to-Date Filing	355	388	472	535	517	-18	-3.4%	1.8%
Annual Filing	706	725	1057	958				
Adoption								
Year-to-Date Filing	193	191	170	177	139	-38	-21.5%	0.5%
Annual Filing	431	347	363	318				
Parentage								
Year-to-Date Filing	154	205	159	158	192	+34	+21.5%	0.7%
Annual Filing	340	401	347	333				
ITA – Civil Commitment								
Year-to-Date Filing	2422	2662	2813	2872	2747	-125	-4.4%	9.8%
Annual Filing	5131	5159	5665	5541				
Juvenile Dependency (DEP)								
Year-to-Date Filing	245	206	218	186	185	-1	-0.5%	0.7%
Annual Filing	435	361	377	302				
Juvenile Termination (TER)								
Year-to-Date Filing	126	97	88	95	62	-33	=34.7%	0.2%
Annual Filing	291	205	188	168				
ARY/CHINS/OTHERS								
Year-to-Date Filing	72	113	124	232	287	+55	+23.7%	1.0%
Annual Filing	187	251	301	479				
Juvenile Truancy								
Year-to-Date Filing	493	4	807	1092	1181	+89	+8.2%	4.2%
Annual Filing	501	61	1121	1560				
Juvenile Offense								
Year-to-Date Filing	484	208	219	375	468	+93	+24.8%	1.7%
Annual Filing	788	356	500	723				
Criminal RALJ								
Year-to-Date Filing	40	18	20	26	43	+17	+65.4%	0.2%
Annual Filing	63	49	53	58				
Civil RALJ								
Year-to-Date Filing	20	33	35	26	34	+8	+30.8%	0.1%
Annual Filing	53	58	55	63				
Matters Filed with Clerk ⁽³⁾								
Year-to-Date Filing	2292	1309	2246	2816	2324	-492	-17.5%	
Annual Filing	2784	2882	5169	5464				

(1) New filings only (based on filing date); (2) New filings of each reporting category as percentage of “Year-to-Date Filing”.
(3) “Matters Filed with Clerk” not included in the “Total”.

Chart 1-A. Quarterly Filing Activity
Total Judicial Cases Only ("Matters Filed with Clerk" excluded)

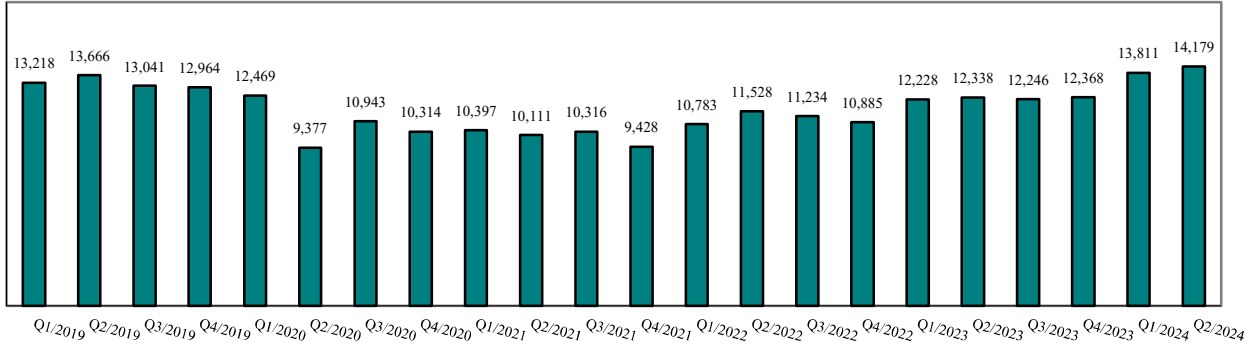


Chart 1-B. Quarterly Filings: Criminal and Juvenile Offense Cases

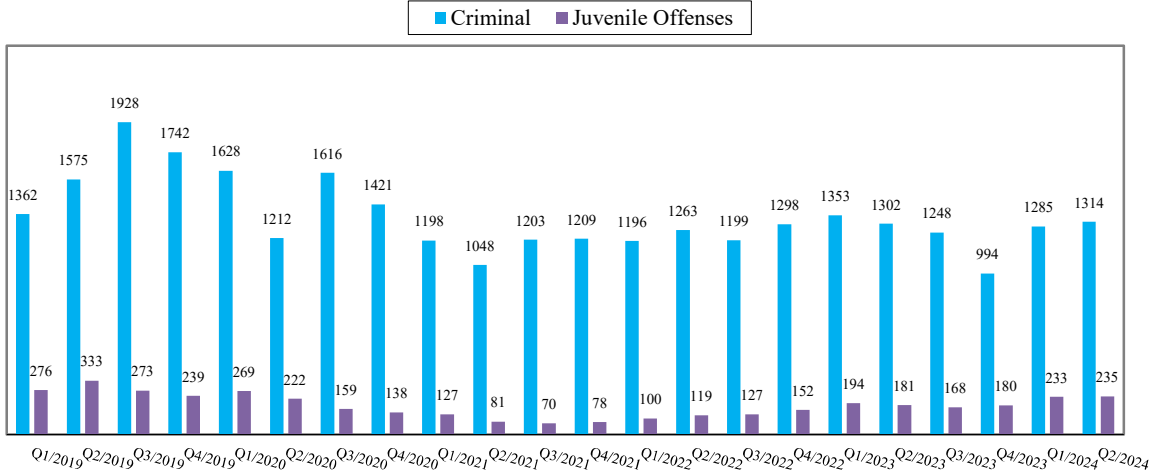
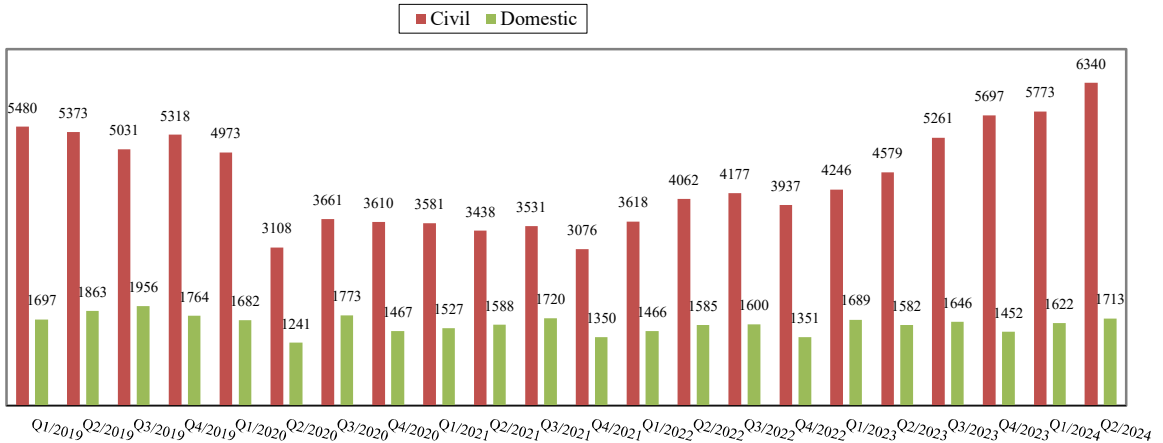


Chart 1-C. Quarterly Filings: Civil and Domestic Cases



* Note: "Civil" is specifically defined in this report. The category of "Civil" does **not** include the following case types: domestic, probate, guardianship, adoption, Parentage, ITA (civil commitment), juvenile cases (dependency, at-risk youth, child-in-need of service), civil RALJ, and tax filings that don't require judicial resources ("matters filed with clerk"). Please check the Appendix for the cause codes in the "General Civil" category.

Table 1-A. Post-Resolution Modifications Filed (Domestic and Parentage Cases)

		2022Q1			2022Q2			2022Q3			2022Q4			Year 2022		
Location	Case Type	DMOD	DTBA	Total	DMOD	DTBA	Total	DMOD	DTBA	Total	DMOD	DTBA	Total	DMOD	DTBA	Total
KNT	Domestic	12	53	65	10	57	67	11	52	63	5	39	44	38	201	239
	Parentage	0	4	4	0	4	4	0	6	6	1	1	2	1	15	16
KNT Total		12	57	69	10	61	71	11	58	69	6	40	46	39	216	255
SEA	Domestic	19	59	78	24	63	87	14	56	70	10	49	59	67	227	294
	Parentage		3	3	2	3	5	1	3	4	2	2	4	5	11	16
SEA Total		19	62	81	26	66	92	15	59	74	12	51	63	72	238	310
KNT/SEA Total		31	119	150	36	127	163	26	117	143	18	91	109	111	454	565
		2023Q1			2023Q2			2023Q3			2023Q4			Year 2023		
Location	Case Type	Relocation	Parent Mod	Total	Relocation	Parent Mod	Total	Relocation	Parent Mod	Total	Relocation	Parent Mod	Total	Relocation	Parent Mod	Total
KNT	Domestic	7	52	59	11	45	56	8	55	63	5	45	50	31	197	228
	Parentage		8	8	1	2	3	1	5	6		4	4	2	19	21
KNT Total		7	60	67	12	47	59	9	60	69	5	49	54	33	216	249
SEA	Domestic	7	58	65	24	47	71	18	46	64	10	42	52	59	193	252
	Parentage		4	4	1	4	5		6	6		3	3	1	17	18
SEA Total		7	62	69	25	51	76	18	52	70	10	45	55	60	210	270
KNT/SEA Total		14	122	136	37	98	135	27	112	139	15	94	109	93	426	519
		2024Q1			2024Q2			2024Q3			2024Q4			Year 2024 (YTD)		
Location	Case Type	Relocation	Parent Mod	Total	Relocation	Parent Mod	Total	Relocation	Parent Mod	Total	Relocation	Parent Mod	Total	Relocation	Parent Mod	Total
KNT	Domestic	8	31	39	12	40	52							20	71	91
	Parentage	1		1		3	3							1	3	4
KNT Total		9	31	40	12	43	55							21	74	95
SEA	Domestic	14	51	65	19	59	78							33	110	143
	Parentage		6	6	2	1	3							2	7	9
SEA Total		14	57	71	21	60	81							35	117	152
KNT/SEA Total		23	88	111	33	103	136							56	191	247

Table 2. Number of Cases Resolved and Resolution Category (%)
King County Superior Court

Reporting Category	Q3/22	Q4/22	Q1/23	Q2/23	Q3/23	Q4/23	Q1/24	Q2/24
Total Resolutions (excl. "Matters Filed with Clerk")	10756	10218	11192	11564	11615	11720	12808	12909
Criminal (excl. RALJ): # Resolved	1225	1121	1273	1309	1338	1205	1291	1296
Resolved by Jury Trial	2.3%	2.9%	2.3%	1.8%	1.4%	2.3%	2.2%	1.5%
Resolved by Non-Jury Trial	0.1%	0.3%	0.1%	0.4%	0.9%	0.2%	0.1%	0.7%
Resolved by Guilty Plea	68.7%	67.6%	65.8%	70.7%	67.6%	66.0%	64.4%	68.4%
Dismissal	28.8%	28.7%	31.7%	26.7%	30.0%	30.8%	32.9%	29.2%
Others	0.2%	0.4%	0.2%	0.4%	0.1%	0.7%	0.3%	0.3%
Civil: # Resolved	3838	3637	4000	4383	4747	4917	5517	5427
Resolved by Jury Trial	0.4%	0.2%	0.3%	0.4%	0.3%	0.3%	0.3%	0.2%
Resolved by Non-Jury Trial	0.3%	0.7%	0.5%	0.2%	0.2%	0.3%	0.2%	0.3%
Summary Judgment	1.6%	1.4%	1.3%	1.2%	0.7%	1.1%	1.0%	1.0%
Default/ Uncontested	47.7%	48.0%	45.3%	46.0%	52.8%	51.5%	49.2%	50.7%
Arbitration	2.6%	3.5%	2.7%	3.1%	1.4%	2.3%	1.4%	1.5%
Settlement/Dismissal	42.8%	44.4%	46.9%	43.6%	41.3%	41.0%	40.5%	38.9%
Closure by Clerk	3.8%	1.2%	1.9%	4.1%	2.7%	2.6%	6.6%	6.8%
Others	0.9%	0.6%	1.3%	1.3%	0.7%	0.8%	0.8%	0.6%
Domestic: # Resolved	1537	1419	1452	1564	1488	1534	1513	1571
Resolved by Trial	5.0%	4.8%	4.7%	3.8%	4.2%	5.6%	4.0%	5.9%
Default/ Uncontested	7.0%	6.8%	7.0%	8.6%	10.2%	8.0%	8.7%	6.5%
Settlement /Dismissal	86.1%	86.8%	86.4%	86.6%	84.2%	85.6%	86.3%	86.6%
Closure by Clerk	1.7%	1.3%	1.5%	0.9%	1.1%	0.5%	0.8%	0.8%
Others	0.1%	0.4%	0.4%	0.1%	0.3%	0.3%	0.3%	0.2%
Probate: # Resolved	1829	1721	2026	1852	1656	1749	2002	2002
Personal Rep. Appointed	70.9%	69.2%	68.9%	68.6%	67.3%	69.1%	68.7%	69.1%
Dismissal	2.0%	0.9%	4.6%	3.5%	4.9%	6.1%	4.1%	3.2%
Closure by Clerk	0.1%	0.0%	0.0%	0.1%	0.4%	0.0%	0.0%	0.0%
Others	27.1%	29.9%	26.5%	27.9%	27.4%	24.8%	27.2%	27.8%
Guardianship: # Resolved	224	209	226	248	221	233	238	252
Guardian Appointed	58.5%	70.8%	55.3%	57.3%	57.0%	52.4%	63.4%	66.3%
Dismissal	23.7%	13.9%	27.4%	24.2%	25.3%	37.3%	27.7%	16.3%
Closure by Clerk	0.0%	0.0%	0.0%	0.0%	0.0%	0.0%	0.0%	0.0%
Others	17.9%	15.3%	17.3%	18.5%	17.6%	10.3%	8.8%	17.5%
Adoption: # Resolved	71	100	75	89	84	73	63	71
Resolved by Trial	1.4%	0.0%	0.0%	0.0%	0.0%	1.4%	0.0%	0.0%
Uncontested	0.0%	1.0%	0.0%	2.2%	0.0%	0.0%	0.0%	0.0%
Settlement /Dismissal	84.5%	99.0%	100.0%	92.1%	94.0%	98.6%	88.9%	98.6%
Closure by Clerk	14.1%	0.0%	0.0%	4.5%	6.0%	0.0%	11.1%	1.4%
Others	0.0%	0.0%	0.0%	1.1%	0.0%	0.0%	0.0%	0.0%
Parentage: # Resolved	74	76	80	71	81	64	74	97
Resolved by Trial	5.4%	5.3%	1.3%	4.2%	3.7%	12.5%	6.8%	7.2%
Summary Judgment	47.3%	31.6%	41.3%	32.4%	39.5%	20.3%	31.1%	34.0%
Default/ Uncontested	9.5%	19.7%	12.5%	15.5%	21.0%	18.8%	17.6%	15.5%
Settlement/Dismissal	37.8%	43.4%	41.3%	47.9%	34.6%	46.9%	43.2%	43.3%
Closure by Clerk	0.0%	0.0%	3.8%	0.0%	1.2%	0.0%	0.0%	0.0%
Others	0.0%	0.0%	0.0%	0.0%	0.0%	1.6%	1.4%	0.0%
ITA(civil commitment): # Resolved	1426	1506	1471	1386	1271	1273	1437	1304
Court Decision to Commit	20.8%	16.7%	19.9%	22.0%	24.7%	21.8%	20.2%	24.4%
Closed by Court	0.0%	0.2%	0.0%	0.0%	0.0%	0.1%	0.0%	0.0%
Dismissal	13.3%	12.9%	14.1%	13.8%	13.5%	12.6%	9.8%	8.4%
Uncontested	66.0%	70.2%	66.0%	64.2%	61.8%	65.6%	70.0%	67.2%
Juv. Dependency: # Resolved	66	75	71	92	86	70	53	59
Finding of Dependency	63.6%	57.3%	60.6%	63.0%	59.3%	64.3%	77.4%	69.5%
Dismissal	36.4%	41.3%	39.4%	35.9%	40.7%	35.7%	22.6%	30.5%
Others	0.0%	1.3%	0.0%	1.1%	0.0%	0.0%	0.0%	0.0%

Table 2 (cont.). Number of Cases Resolved and Resolution Category (%)
King County Superior Court

Reporting Category	Q3/22	Q4/22	Q1/23	Q2/23	Q3/23	Q4/23	Q1/24	Q2/24
Juv. Terminations: # Resolved	31	31	48	71	53	51	42	46
Finding of Dependency	64.5%	80.6%	89.6%	84.5%	88.7%	88.2%	85.7%	87.0%
Dismissal	35.5%	19.4%	10.4%	15.5%	11.3%	11.8%	14.3%	13.0%
Others	0.0%	0.0%	0.0%	0.0%	0.0%	0.0%	0.0%	0.0%
ARY/CHINS/OTHER: # Resolved	59	68	117	103	110	103	129	148
Approve of Petition	74.6%	67.6%	76.1%	79.6%	82.7%	82.5%	79.8%	91.2%
Dismissal	25.4%	32.4%	23.9%	20.4%	17.3%	17.5%	20.2%	8.8%
Others	0.0%	0.0%	0.0%	0.0%	0.0%	0.0%	0.0%	0.0%
Juvenile Truancy: # Resolved	241	151	179	168	294	236	224	552
Approve of Petition	2.9%	7.3%	10.6%	24.4%	5.4%	8.1%	13.8%	19.2%
Dismissal	97.1%	92.7%	88.8%	75.6%	94.6%	91.9%	86.2%	80.8%
Others	0.0%	0.0%	0.6%	0.6%	0.0%	0.0%	0.0%	0.0%
Juvenile Offense: # Resolved	107	94	156	208	161	184	178	158
Resolved by Trial (Fact Finding)	2.8%	0.0%	0.0%	0.0%	0.6%	0.0%	0.0%	0.6%
Resolved by Guilty Plea	41.1%	36.2%	47.4%	41.8%	34.8%	44.0%	31.5%	33.5%
Dismissal	30.8%	43.6%	34.6%	37.0%	41.0%	35.3%	51.1%	41.1%
Deferred Disposition (DDSP)	15.9%	11.7%	14.1%	11.5%	21.7%	15.8%	12.4%	17.1%
Others (including Deferred Prosecution)	9.3%	8.5%	3.8%	9.6%	1.9%	4.9%	5.1%	7.6%
Criminal RALJ: # Resolved	12	9	11	11	8	16	23	12
RALJ Decision	50.0%	66.7%	54.5%	54.5%	62.5%	87.5%	60.9%	75.0%
Dismissal	50.0%	33.3%	45.5%	36.4%	37.5%	12.5%	39.1%	25.0%
Others	0.0%	0.0%	0.0%	9.1%	0.0%	0.0%	0.0%	0.0%
Civil RALJ: # Resolved	16	10	7	9	17	12	24	19
RALJ Decision	25.0%	20.0%	57.1%	44.4%	35.3%	25.0%	25.0%	26.3%
Dismissal	62.5%	70.0%	42.9%	55.6%	64.7%	75.0%	75.0%	68.4%
Others	12.5%	10.0%	0.0%	0.0%	0.0%	0.0%	0.0%	5.3%

Chart 2-A. Quarterly Resolutions
Total Judicial Cases Only ("Matters Filed with Clerk" excluded)

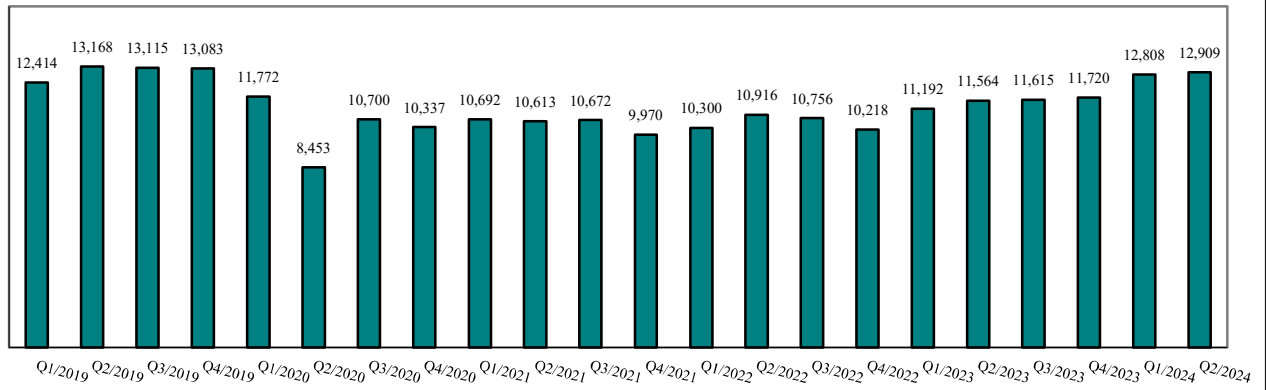


Chart 2-B. Quarterly Resolutions: Criminal and Juvenile Offense Cases

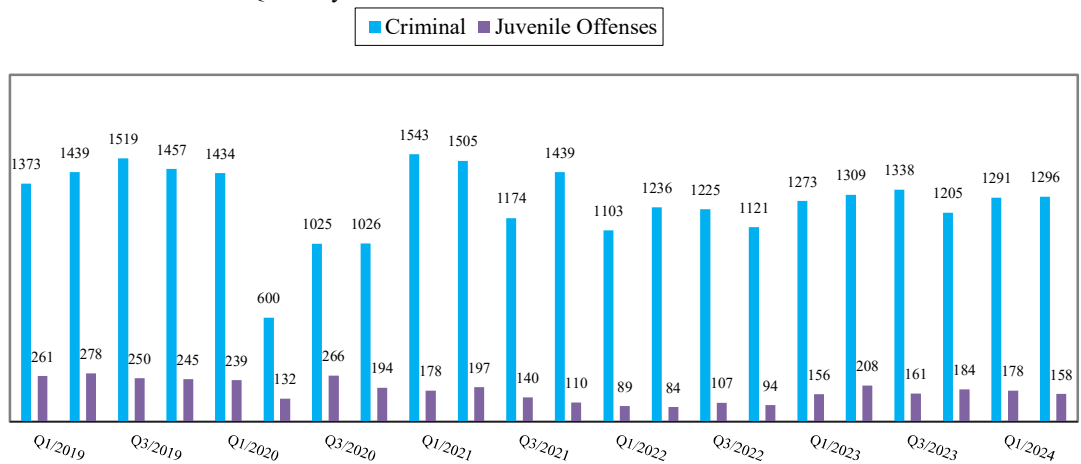
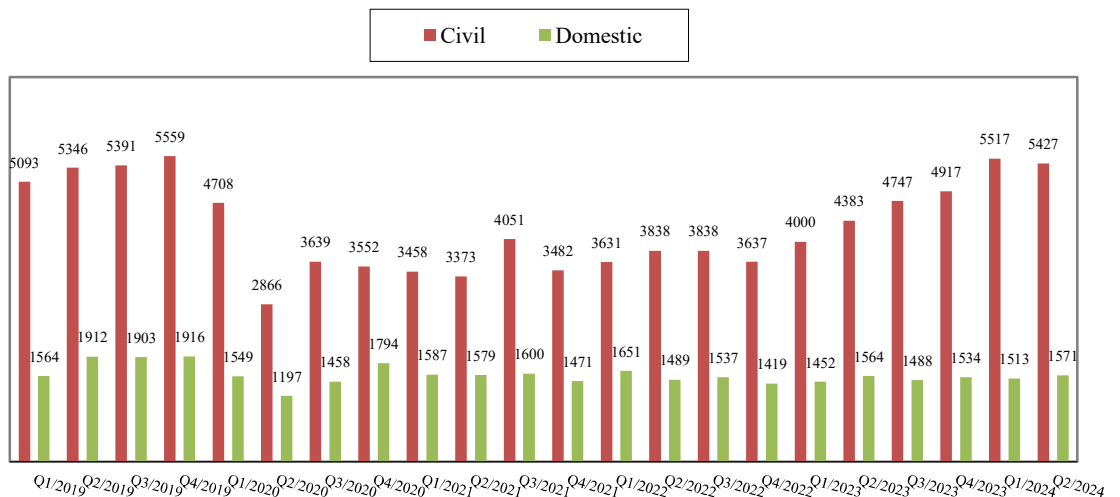


Chart 2-C. Quarterly Resolutions: Civil and Domestic Cases



Note: "Civil" is specifically defined in this report. The category of "Civil" does **not** include the following case types: domestic, probate, guardianship, adoption, Parentage, mental illness, juvenile cases (dependency, at-risk youth, child-in-need of service), civil RALJ, and tax filings that don't require judicial resources ("matters filed with clerk"). Please check the Appendix for the cause codes in the "General Civil" category.

Table 3. Age of Resolved Cases
King County Superior Court

Reporting Category	Age of Cases at Resolution							
	Q3/22	Q4/22	Q1/23	Q2/23	Q3/23	Q4/23	Q1/24	Q2/24
Criminal (excl. RALJ)								
Age (days)								
50% Cases Resolved by Day	238	232	190	212	193	214	252	230
90% Cases Resolved by Day	741	740	799	806	809	842	774	773
Comparison with Court Standard of								
90% in 4 months	30%	32%	38%	35%	37%	36%	29%	34%
98% in 6 months	41%	42%	49%	44%	48%	46%	39%	42%
100% in 9 months	55%	56%	60%	58%	59%	59%	53%	56%
Civil (excl. RALJ)								
Age (days)								
50% Cases Resolved by Day	46	47	56	43	43	38	63	49
90% Cases Resolved by Day	385	371	376	371	346	345	399	430
Comparison with Court Standard of								
90% in 12 months	88%	89%	89%	89%	91%	91%	88%	87%
98% in 18 months	95%	96%	96%	95%	97%	97%	94%	92%
100% in 24 months	98%	98%	98%	97%	98%	98%	97%	94%
Domestic								
Age (days)								
50% Cases Resolved by Day	191	179	194	187	188	210	204	197
90% Cases Resolved by Day	446	449	457	439	448	488	493	467
Comparison with Court Standard of								
90% in 8 months	57%	60%	56%	60%	60%	56%	58%	57%
98% in 10 months	66%	71%	67%	70%	68%	67%	66%	68%
100% in 14 months	88%	88%	88%	89%	88%	85%	86%	86%
Probate								
Age (days)								
50% Cases Resolved by Day	3	2	3	2	3	3	2	3
90% Cases Resolved by Day	25	35	44	31	59	33	28	54
Comparison with Court Standard of								
90% in 8 months	99%	99%	98%	99%	97%	99%	99%	98%
98% in 18 months	100%	100%	100%	99%	99%	100%	100%	99%
100% in 36 months	100%	100%	100%	100%	100%	100%	100%	100%
Guardianship								
Age (days)								
50% Cases Resolved by Day	62	62	62	63	62	63	63	64
90% Cases Resolved by Day	201	177	196	135	128	170	140	158
Comparison with Court Standard of								
90% in 8 months	91%	94%	92%	96%	96%	95%	95%	94%
98% in 18 months	100%	98%	99%	100%	100%	99%	100%	99%
100% in 36 months	100%	100%	100%	100%	100%	100%	100%	100%
Adoption								
Age (days)								
50% Cases Resolved by Day	69	36	42	50	47	37	73	56
90% Cases Resolved by Day	514	257	209	319	263	222	617	237
Comparison with Court Standard of								
90% in 8 months	75%	87%	95%	85%	88%	95%	76%	90%
98% in 10 months	80%	92%	97%	89%	93%	95%	83%	92%
100% in 14 months	86%	94%	99%	92%	94%	96%	83%	94%
Parentage								
Age (days)								
50% Cases Resolved by Day	161	149	165	208	222	139	226	195
90% Cases Resolved by Day	476	517	477	489	495	461	515	539
Comparison with Court Standard of								
90% in 8 months	65%	71%	65%	59%	54%	63%	51%	62%
98% in 10 months	76%	76%	76%	75%	65%	73%	72%	69%
100% in 14 months	87%	87%	86%	89%	88%	87%	85%	86%

Table 3 (cont.) Age of Resolved Cases

King County Superior Court

Reporting Category	Age of Cases at Resolution							
	Q3/22	Q4/22	Q1/23	Q2/23	Q3/23	Q4/23	Q1/24	Q2/24
ITA (civil commitment) *								
Age (days)								
50% Cases Resolved by Day	11	13	10	10	10	10	13	11
90% Cases Resolved by Day	40	92	41	40	45	45	64	39
Juvenile Dependency (DEP)								
Age (days)								
50% Cases Resolved by Day	152	194	160	172	209	200	132	182
90% Cases Resolved by Day	422	523	557	556	459	489	433	530
Comparison with Court Standard of								
90% in 8 months	71%	64%	69%	60%	58%	54%	74%	68%
98% in 10 months	77%	77%	79%	73%	72%	67%	74%	73%
100% in 14 months	89%	87%	83%	85%	86%	79%	89%	81%
Juvenile Termination (TER)								
Age (days)								
50% Cases Resolved by Day	319	224	378	238	258	206	258	291
90% Cases Resolved by Day	887	830	806	853	504	808	869	717
Comparison with Court Standard of								
90% in 8 months	45%	52%	46%	52%	43%	61%	48%	41%
98% in 10 months	48%	61%	50%	62%	64%	73%	52%	52%
100% in 14 months	58%	68%	50%	79%	76%	80%	67%	76%
ARY/CHINS/OTHER								
Age (days)								
50% Cases Resolved by Day	35	35	39	32	35	34	35	32
90% Cases Resolved by Day	219	181	288	123	188	96	243	69
Comparison with Court Standard of								
90% in 8 months	92%	96%	87%	98%	94%	95%	90%	98%
98% in 10 months	95%	97%	91%	98%	97%	97%	96%	100%
100% in 14 months	100%	100%	94%	100%	97%	100%	100%	100%
Juvenile Truancy*								
Age (days)								
50% Cases Resolved by Day	915	203	366	378	414	286	356	399
90% Cases Resolved by Day	1220	320	421	431	518	517	462	519
Juvenile Offense								
Age (days)								
50% Cases Resolved by Day	142	118	136	116	154	132	126	106
90% Cases Resolved by Day	520	407	422	369	385	358	397	331
Comparison with Court Standard of								
90% in 4 months	47%	52%	47%	51%	39%	49%	48%	56%
98% in 6 months	56%	65%	58%	68%	60%	63%	70%	75%
100% in 9 months	71%	81%	75%	78%	79%	84%	83%	85%
Criminal RALJ								
Age (days)								
50% Cases Resolved by Day	215	307	227	253	202	366	256	175
90% Cases Resolved by Day	386	532	490	431	427	504	531	578
Civil RALJ								
Age (days)								
50% Cases Resolved by Day	160	165	202	173	165	166	180	164
90% Cases Resolved by Day	204	224	292	245	318	243	728	226

* No standard yet.

Table 4. Active Pending Caseload Statistics
King County Superior Court

Reporting Category		Q3/22	Q4/22	Q1/23	Q2/23	Q3/23	Q4/23	Q1/24	Q2/24
Total (incl. RALJ)									
Previous Pending	(+)	19276	19684	20095	20774	21357	21942	21865	23044
New Filing	(+)	11234	10885	12228	12338	12246	12368	13811	14179
Resolved	(-)	10756	10218	11192	11564	11615	11720	12808	12909
End Pending		19684	20095	20774	21357	21942	21865	23044	24122
Resolution Rate*		0.957	0.939	0.915	0.937	0.948	0.948	0.927	0.910
Criminal (excl. RALJ)									
Previous Pending	(+)	4248	4222	4298	4635	4286	4222	3919	3918
New Filing	(+)	1199	1298	1353	1302	1248	994	1285	1314
Resolved	(-)	1225	1121	1273	1309	1338	1205	1291	1296
End Pending		4222	4298	4635	4286	4222	3919	3918	4069
Resolution Rate*		1.022	0.864	0.941	1.005	1.072	1.212	1.005	0.986
Civil (excl. RALJ)									
Previous Pending	(+)	6270	6563	6799	6762	7124	7615	8034	8394
New Filing	(+)	4177	3937	4246	4579	5261	5697	5773	6340
Resolved	(-)	3838	3637	4000	4383	4747	4917	5517	5427
End Pending		6563	6799	6762	7124	7615	8034	8394	9125
Resolution Rate*		0.919	0.924	0.942	0.957	0.902	0.863	0.956	0.856
Domestic									
Previous Pending	(+)	4294	4359	4281	4417	4448	4624	4404	4564
New Filing	(+)	1600	1351	1689	1582	1646	1452	1622	1713
Resolved	(-)	1537	1419	1452	1564	1488	1534	1513	1571
End Pending		4359	4281	4417	4448	4624	4404	4564	4664
Resolution Rate*		0.961	1.050	0.860	0.989	0.904	1.056	0.933	0.917
Probate									
Previous Pending	(+)	1216	1302	1388	1420	1485	1506	1572	1711
New Filing	(+)	1930	1824	2100	1941	1697	1825	2160	1928
Resolved	(-)	1829	1712	2026	1852	1656	1749	2002	1897
End Pending		1302	1388	1420	1485	1506	1572	1711	1699
Resolution Rate*		0.948	0.939	0.965	0.954	0.976	0.958	0.927	0.984
Guardianship									
Previous Pending	(+)	474	492	489	522	532	563	541	573
New Filing	(+)	248	238	279	256	263	225	284	233
Resolved	(-)	224	209	226	248	221	233	238	252
End Pending		492	489	522	532	563	541	573	537
Resolution Rate*		0.903	0.878	0.810	0.969	0.840	1.036	0.838	1.082
Adoption									
Previous Pending	(+)	234	265	259	266	263	248	237	238
New Filing	(+)	105	88	89	88	69	72	79	60
Resolved	(-)	71	100	75	89	84	73	63	71
End Pending		265	259	266	263	248	237	238	229
Resolution Rate*		0.676	1.136	0.843	1.011	1.217	1.014	0.797	1.183
Parentage									
Previous Pending	(+)	190	210	226	214	228	224	253	255
New Filing	(+)	91	97	74	84	77	98	80	112
Resolved	(-)	74	76	80	71	81	64	74	97
End Pending		210	226	214	228	224	253	255	262
Resolution Rate*		0.813	0.784	1.081	0.845	1.052	0.653	0.925	0.866
ITA (civil commitment)									
Previous Pending	(+)	337	405	282	274	309	356	333	362
New Filing	(+)	1464	1388	1449	1423	1328	1341	1391	1356
Resolved	(-)	1426	1506	1471	1386	1271	1273	1437	1304
End Pending		405	282	274	309	356	333	362	414
Resolution Rate*		0.974	1.085	1.015	0.974	0.957	0.949	1.033	0.962

* A value of "Resolution Rate" less than one indicates the resolution pace is slower than the filing pace.

Table 4 (cont.) Active Pending Caseload Statistics
King County Superior Court

Reporting Category	Q3/22	Q4/22	Q1/23	Q2/23	Q3/23	Q4/23	Q1/24	Q2/24
Juvenile Dependency (DEP)								
Previous Pending (+)	260	283	279	247	240	207	217	242
New Filing (+)	92	75	105	81	53	80	82	103
Resolved (-)	66	75	71	92	86	70	53	59
End Pending	283	279	247	240	207	217	242	246
Resolution Rate*	0.717	1.000	0.676	1.136	1.623	0.875	0.646	0.573
Juvenile Termination (TER)								
Previous Pending (+)	232	241	265	205	180	175	137	113
New Filing (+)	44	56	45	50	50	23	26	36
Resolved (-)	31	31	48	71	53	51	42	46
End Pending	241	265	205	180	175	137	113	106
Resolution Rate*	0.705	0.554	1.067	1.420	1.060	2.217	1.615	1.278
ARY/CHINS/OTHERS								
Previous Pending (+)	125	127	158	121	129	121	143	129
New Filing (+)	69	100	118	114	108	122	126	161
Resolved (-)	59	68	117	103	110	103	129	148
End Pending	127	158	121	129	121	143	129	143
Resolution Rate*	0.855	0.680	0.992	0.904	1.019	0.844	1.024	0.919
Juvenile Truancy								
Previous Pending (+)	1077	900	999	1275	1739	1689	1677	2092
New Filing (+)	64	250	459	633	244	224	638	543
Resolved (-)	241	151	179	168	294	236	224	552
End Pending	900	999	1275	1739	1689	1677	2092	2081
Resolution Rate*	3.766	0.604	0.390	0.265	1.205	1.054	0.351	1.017
Juvenile Offense								
Previous Pending (+)	256	256	301	334	309	299	233	233
New Filing (+)	127	152	194	181	168	180	180	235
Resolved (-)	107	94	156	208	161	184	178	158
End Pending	256	301	334	309	299	302	369	448
Resolution Rate*	0.843	0.618	0.804	1.149	0.958	1.022	0.989	0.672
Criminal RALJ								
Previous Pending (+)	31	36	42	46	47	49	55	47
New Filing (+)	17	16	14	12	12	20	16	27
Resolved (-)	12	9	11	11	8	16	23	12
End Pending	36	42	46	47	49	55	47	62
Resolution Rate*	0.706	0.563	0.786	0.917	0.667	0.800	1.438	0.444
Civil RALJ								
Previous Pending (+)	32	23	29	36	38	44	41	37
New Filing (+)	7	15	14	12	22	15	16	18
Resolved (-)	16	10	7	9	17	12	24	19
End Pending	23	29	36	38	44	41	37	37
Resolution Rate*	2.286	0.667	0.500	0.750	0.773	0.800	1.500	1.056

* A value of "Resolution Rate" less than one indicates the resolution pace is slower than the filing pace.

Table 4-A. Active Re-opened Cases and Modification Cases

Reporting Category	Q3/22	Q4/22	Q1/23	Q2/23	Q3/23	Q4/23	Q1/24	Q2/24
Re-opened without disposition	713	806	824	851	865	905	903	922
Modification without disposition	503	501	508	552	522	503	506	398

Chart 4-A. Pending Caseload at Quarter End:
Total Judicial Cases Only ("Matters Filed with Clerk" excluded)

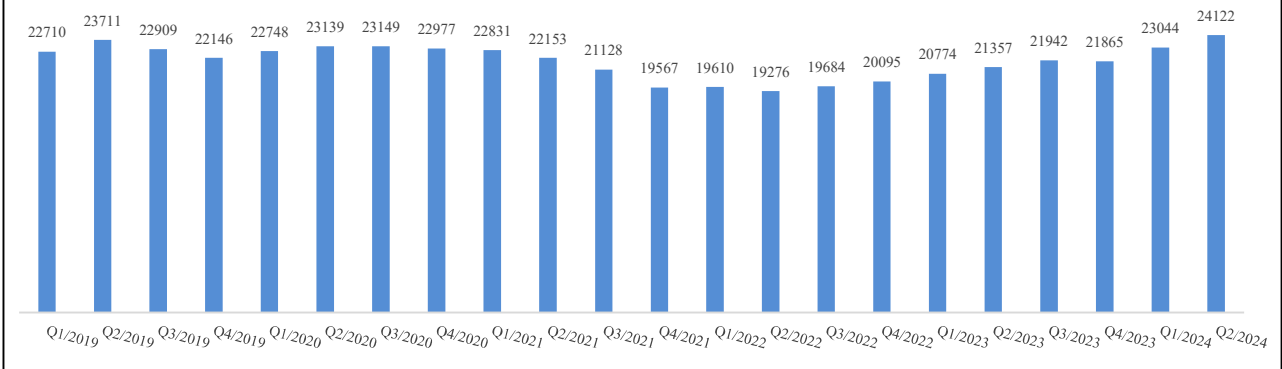


Chart 4-B. Pending Caseload at Quarter End: Criminal, Domestic, and Civil Cases

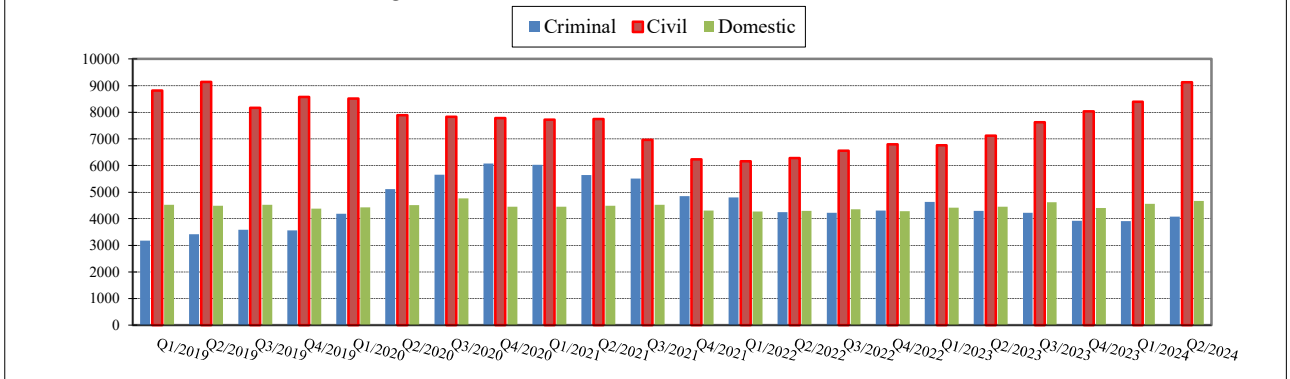
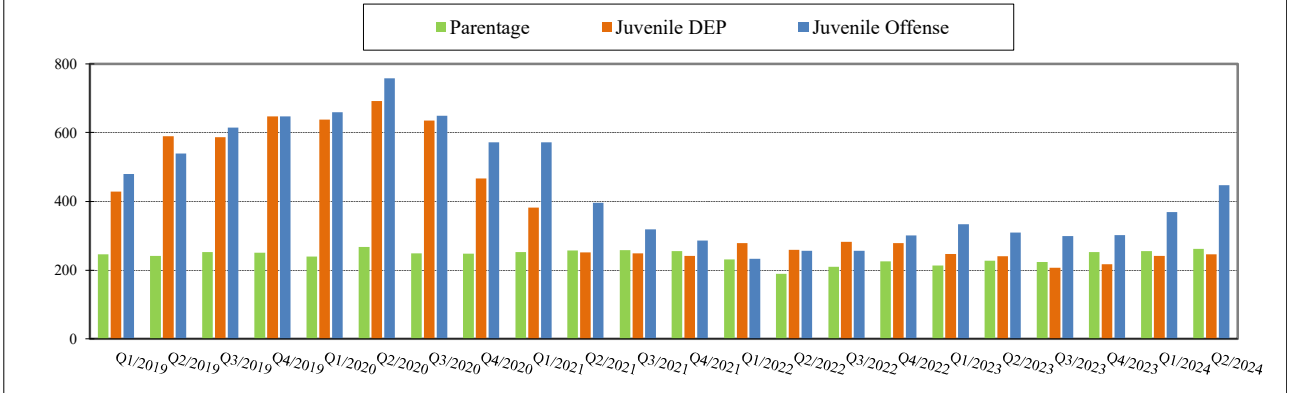


Chart 4-C. Pending Caseload at Quarter End:
Juvenile Offense, Paternity, and Dependency Cases



Note: "Civil" is specifically defined in this report. The category of "Civil" does **not** include the following case types: domestic, probate, guardianship, adoption, Parentage, mental illness, juvenile cases (dependency, at-risk youth, child-in-need of service), civil RALJ, and tax filings that don't require judicial resources ("matters filed with clerk"). Please check the Appendix for the cause codes in the "General Civil" category.

Table 5. Age of Pending Cases
King County Superior Court

Reporting Category	Age of Pending Cases and # of Cases in Each Age Interval							
	Q3/22	Q4/22	Q1/23	Q2/23	Q3/23	Q4/23	Q1/24	Q2/24
Criminal (excl. RALJ): # of Cases	4222	4298	4635	4286	4222	3919	3918	4069
Age (days)								
Median (50 percentile)	232	222	198	213	216	236	227	200
90 percentile	786	796	767	778	745	742	727	696
# of Cases in Age Interval								
0 - 60 days (0 - 2 months)	823	860	1137	768	762	562	744	746
61 - 120 days (3 - 4 months)	559	583	595	604	555	532	516	678
121 - 180 days (5 - 6 months)	405	442	466	551	511	509	401	486
181 - 270 days (7 - 9 months)	559	522	589	529	634	561	569	507
> 270 days (> 9 months)	1876	1891	1848	1834	1760	1755	1688	1652
Civil (excl. RALJ): # of Cases	6563	6799	6762	7124	7615	8034	8394	9125
Age (days)								
Median (50 percentile)	151	165	164	150	144	137	137	129
90 percentile	640	629	597	544	545	550	509	405
# of Cases in Age Interval								
0 - 120 days (0 - 4 months)	2769	2658	2751	3054	3388	3657	3843	4372
121 - 240 days (5 - 8 months)	1492	1675	1582	1550	1659	1830	2135	2385
241 - 360 days (9 - 12 months)	915	1033	1074	1084	968	1027	1016	1211
361 - 540 days (13 - 18 months)	575	606	581	711	821	691	640	670
541 - 720 days (19 - 24 months)	250	251	253	253	289	340	330	276
> 720 days (> 24 months)	562	576	521	472	490	489	430	211
Domestic: # of Cases	4359	4281	4417	4448	4624	4404	4564	4664
Age (days)								
Median (50 percentile)	144	159	151	144	151	157	159	145
90 percentile	549	577	556	544	548	570	556	537
# of Cases in Age Interval								
0 - 120 days (0 - 4 months)	1937	1690	1918	1936	1971	1776	1877	2064
121 - 240 days (5 - 8 months)	1092	1149	1083	1013	1170	1140	1142	1034
241 - 360 days (9 - 12 months)	552	671	665	670	594	669	688	713
361 - 540 days (13 - 18 months)	331	316	296	380	422	330	385	391
> 540 days (> 18 months)	447	455	455	449	467	489	472	462
Probate: # of Cases	1302	1388	1420	1485	1506	1572	1711	1699
Age (days)								
Median (50 percentile)	415	438	490	486	543	579	558	636
90 percentile	2034	2070	2141	2199	2260	2314	2350	2442
# of Cases in Age Interval								
0 - 120 days (0 - 4 months)	329	354	346	373	320	312	371	351
121 - 240 days (5 - 8 months)	171	152	163	149	183	162	166	149
241 - 360 days (9 - 12 months)	105	141	117	116	115	148	132	122
361 - 540 days (13 - 18 months)	106	119	116	145	132	136	169	164
> 540 days (> 18 months)	591	622	678	702	756	814	873	913
Guardianship: # of Cases	492	489	522	532	563	541	573	537
Age (days)								
Median (50 percentile)	214	233	235	262	269	368	369	452
90 percentile	1209	1382	1173	1264	1354	1447	1522	1629
# of Cases in Age Interval								
0 - 120 days (0 - 4 months)	189	180	216	203	203	177	210	181
121 - 240 days (5 - 8 months)	68	70	50	54	63	43	47	43
241 - 360 days (9 - 12 months)	50	35	42	49	40	48	28	29
361 - 540 days (13 - 18 months)	46	56	42	37	49	53	40	34
> 540 days (> 18 months)	139	148	172	189	208	220	248	250

Table 5 (cont.). Age of Pending Cases
King County Superior Court

Reporting Category	Age of Pending Cases and # of Cases in Each Age Interval							
	Q3/22	Q4/22	Q1/23	Q2/23	Q3/23	Q4/23	Q1/24	Q2/24
Adoption: # of Cases	265	259	266	263	248	237	238	229
Age (days)								
Median (50 percentile)	393	452	509	534	714	921	696	829
90 percentile	1846	1952	2028	2119	2228	2320	2366	2475
# of Cases in Age Interval								
0 - 120 days (0 - 4 months)	82	60	56	57	39	32	52	41
121 - 240 days (5 - 8 months)	29	39	33	21	25	18	20	16
241 - 360 days (9 - 12 months)	18	19	25	29	13	12	9	11
361 - 540 days (13 - 18 months)	12	16	24	25	33	24	21	16
> 540 days (> 18 months)	124	125	128	131	138	151	136	145
Parentage: # of Cases	210	226	214	228	224	253	255	262
Age (days)								
Median (50 percentile)	139	115	142	158	147	157	157	157
90 percentile	457	422	470	473	443	453	447	425
# of Cases in Age Interval								
0 - 120 days (0 - 4 months)	97	116	92	99	94	108	93	115
121 - 240 days (5 - 8 months)	43	48	61	63	58	64	77	62
241 - 360 days (9 - 12 months)	37	29	26	33	34	39	46	44
361 - 540 days (13 - 18 months)	20	20	24	17	23	29	25	26
> 540 days (> 18 months)	13	13	11	16	15	13	14	15
ITA (civil commitment): # of Cases	405	282	274	309	356	333	362	414
Age (days)								
Median (50 percentile)	52	25	25	26	38	49	41	44
90 percentile	241	257	346	414	418	580	598	664
# of Cases in Age Interval								
0 - 120 days (0 - 4 months)	271	228	213	213	213	227	244	270
121 - 240 days (5 - 8 months)	93	21	22	22	22	40	29	45
> 240 days (> 8 months)	41	33	39	39	39	66	89	99
Juv Dependency (DEP): # of Cases	283	279	247	240	207	217	242	246
Age (days)								
Median (50 percentile)	169	180	136	155	202	199	180	132
90 percentile	591	681	388	411	480	544	586	601
# of Cases in Age Interval								
0 - 60 days (0 - 2 months)	61	50	70	47	38	42	56	57
61 - 120 days (3 - 4 months)	46	44	44	53	22	41	24	55
121 - 180 days (5 - 6 months)	44	46	36	33	31	21	45	39
181 - 270 days (7 - 9 months)	49	35	43	41	44	26	22	20
> 270 days (> 9 months)	83	104	54	66	72	87	95	75
Juv Termination (TER): # of Cases	241	265	205	180	175	137	113	106
Age (days)								
Median (50 percentile)	450	464	232	220	205	271	269	212
90 percentile	1793	1866	961	1013	891	985	1076	1130
# of Cases in Age Interval								
0 - 60 days (0 - 2 months)	32	36	31	24	28	13	12	18
61 - 120 days (3 - 4 months)	18	28	30	35	25	14	16	22
121 - 180 days (5 - 6 months)	24	26	25	15	24	26	5	11
181 - 270 days (7 - 9 months)	13	25	26	28	22	15	24	3
> 270 days (> 9 months)	154	150	93	78	76	69	56	52
ARY/CHINS/OTHER: # of Cases	127	158	121	129	121	143	129	143
Age (days)								
Median (50 percentile)	366	166	116	129	159	168	122	140
90 percentile	1814	1858	1921	2012	2104	2124	2287	2293
# of Cases in Age Interval								
0 - 60 days (0 - 2 months)	38	42	52	49	33	45	49	56
61 - 120 days (3 - 4 months)	8	25	12	12	18	18	14	14
121 - 180 days (5 - 6 months)	9	15	6	13	12	13	6	5
181 - 270 days (7 - 9 months)	4	8	7	8	12	14	9	11
> 270 days (> 9 months)	68	68	44	47	46	53	51	57

Table 5 (cont.). Age of Pending Cases
King County Superior Court

Reporting Category	Age of Pending Cases and # of Cases in Each Age Interval							
	Q3/22	Q4/22	Q1/23	Q2/23	Q3/23	Q4/23	Q1/24	Q2/24
Juvenile Truancy: # of Cases	900	999	1275	1739	1689	1677	2092	2081
Age (days)								
Median (50 percentile)	165	235	155	130	185	245	257	171
90 percentile	297	355	410	459	520	600	662	671
# of Cases in Age Interval								
0 - 60 days (0 - 2 months)	40	183	336	432	5	173	427	377
61 - 120 days (3 - 4 months)	167	55	188	379	434	45	288	342
121 - 180 days (5 - 6 months)	292	43	146	257	387	239	110	360
181 - 270 days (7 - 9 months)	295	378	40	195	400	508	241	170
> 270 days (> 9 months)	106	340	565	476	463	712	1026	832
Juvenile Offense: # of Cases	256	301	334	309	299	302	369	448
Age (days)								
Median (50 percentile)	122	122	81	107	106	90	89	103
90 percentile	549	424	372	367	374	305	313	315
# of Cases in Age Interval								
0 - 60 days (0 - 2 months)	71	86	138	86	98	104	127	134
61 - 120 days (3 - 4 months)	54	62	48	86	64	82	98	117
121 - 180 days (5 - 6 months)	40	36	51	50	50	45	54	85
181 - 270 days (7 - 9 months)	37	53	39	36	42	34	40	53
> 270 days (> 9 months)	54	64	58	51	45	37	50	59
Criminal RALJ: # of Cases	36	42	46	47	49	55	47	62
Age (days)								
Median (50 percentile)	107	109	149	184	243	145	124	110
90 percentile	425	328	344	355	447	459	528	367
# of Cases in Age Interval								
0 - 60 days (0 - 2 months)	9	11	7	8	9	17	9	21
61 - 120 days (3 - 4 months)	10	11	9	6	6	7	12	11
121 - 180 days (5 - 6 months)	5	9	12	8	7	6	11	9
181 - 270 days (7 - 9 months)	4	4	11	13	5	8	4	10
> 270 days (> 9 months)	8	7	7	12	22	17	11	11
Civil RALJ: # of Cases	23	29	36	38	44	41	37	37
Age (days)								
Median (50 percentile)	131	80	101	122	90	110	108	97
90 percentile	470	562	471	562	580	672	243	334
# of Cases in Age Interval								
0 - 60 days (0 - 2 months)	4	12	10	6	16	14	13	9
61 - 120 days (3 - 4 months)	7	5	11	13	10	8	10	13
121 - 180 days (5 - 6 months)	6	2	7	5	4	7	7	8
181 - 270 days (7 - 9 months)	2	4	1	6	5	2	5	2
> 270 days (> 9 months)	4	6	7	8	9	10	2	5

Table 6. Seattle vs. Regional Justice Center (KNT): Filing, Resolution, Pending Caseload (%)
King County Superior Court

	Q2/23		Q3/23		Q4/23		Q1/24		Q2/24	
	SEA	KNT	SEA	KNT	SEA	KNT	SEA	KNT	SEA	KNT
Filings Total	65%	35%	65%	35%	66%	34%	63%	37%	64%	36%
Criminal (excl. RALJ)	67%	33%	65%	35%	57%	43%	55%	45%	57%	43%
Civil (excl. RALJ)	58%	42%	57%	43%	59%	41%	55%	45%	58%	42%
Domestic	58%	42%	64%	36%	61%	39%	63%	37%	63%	37%
Probate	71%	29%	70%	30%	71%	29%	69%	31%	69%	31%
Guardianship	55%	45%	56%	44%	53%	47%	52%	48%	58%	43%
Adoption	67%	33%	71%	29%	81%	19%	86%	14%	75%	25%
Parentage	45%	55%	39%	61%	50%	50%	54%	46%	50%	50%
ITA (civil commitment)	100%	--	100%	--	100%	--	100%	--	100%	--
Juv. Dependency (DEP)	59%	41%	70%	30%	61%	39%	79%	21%	83%	17%
Juv. Termination (TER)	80%	20%	82%	18%	83%	17%	81%	19%	47%	53%
ARY/CHINS/Other	40%	60%	57%	43%	60%	40%	48%	52%	52%	48%
Juvenile Truancy	32%	68%	2%	98%	62%	38%	30%	70%	32%	68%
Juvenile Offense	100%	--	100%	--	100%	--	100%	--	100%	--
Criminal RALJ	75%	25%	75%	25%	80%	20%	69%	31%	78%	22%
Civil RALJ	58%	42%	100%	0%	80%	20%	81%	19%	83%	17%
Resolution Total	66%	34%	65%	35%	66%	34%	66%	34%	64%	36%
Criminal (excl. RALJ)	58%	42%	62%	38%	62%	38%	62%	38%	59%	41%
Civil (excl. RALJ)	59%	41%	57%	43%	59%	41%	58%	42%	58%	42%
Domestic	61%	39%	59%	41%	63%	38%	63%	37%	64%	36%
Probate	71%	29%	72%	28%	70%	30%	70%	30%	68%	32%
Guardianship	50%	50%	55%	45%	58%	43%	58%	43%	53%	47%
Adoption	69%	31%	74%	26%	82%	18%	78%	22%	83%	17%
Parentage	45%	55%	37%	63%	61%	39%	49%	51%	52%	48%
ITA (civil commitment)	100%	--	100%	--	100%	--	100%	--	100%	--
Juv. Dependency (DEP)	71%	29%	64%	36%	59%	41%	70%	30%	83%	17%
Juv. Termination (TER)	69%	31%	60%	40%	73%	28%	83%	17%	74%	26%
ARY/CHINS/Other	52%	48%	51%	49%	61%	39%	43%	57%	59%	41%
Juvenile Truancy	17%	83%	35%	65%	38%	62%	35%	65%	32%	68%
Juvenile Offense	100%	--	100%	--	100%	--	100%	--	100%	--
Criminal RALJ	55%	45%	38%	62%	88%	13%	65%	35%	58%	42%
Civil RALJ	89%	11%	77%	23%	67%	33%	88%	12%	84%	16%
Pending Total	63%	37%	63%	37%	63%	37%	61%	39%	61%	39%
Criminal (excl. RALJ)	63%	37%	64%	36%	63%	37%	61%	39%	60%	40%
Civil (excl. RALJ)	66%	34%	65%	35%	65%	35%	63%	37%	63%	37%
Domestic	59%	41%	61%	39%	61%	39%	61%	39%	60%	40%
Probate	71%	29%	70%	30%	71%	29%	69%	31%	70%	30%
Guardianship	59%	41%	59%	41%	58%	42%	55%	45%	56%	44%
Adoption	69%	31%	68%	32%	67%	33%	69%	31%	66%	34%
Parentage	37%	63%	37%	63%	37%	63%	38%	62%	37%	63%
ITA (civil commitment)	100%	--	100%	--	100%	--	100%	--	100%	--
Juv. Dependency (DEP)	68%	32%	68%	32%	68%	32%	70%	30%	70%	30%
Juv. Termination (TER)	72%	28%	77%	23%	81%	19%	79%	21%	68%	32%
ARY/CHINS/Other	58%	42%	66%	34%	64%	36%	70%	30%	60%	40%
Juvenile Truancy	38%	62%	34%	66%	37%	63%	35%	65%	35%	65%
Juvenile Offense	100%	--	100%	--	100%	--	100%	--	100%	--
Criminal RALJ	68%	32%	76%	24%	73%	27%	75%	25%	79%	21%
Civil RALJ	74%	26%	86%	14%	88%	12%	87%	13%	87%	13%

Excluding Cases filed with the Clerk

Table 7. Quarterly Utilization of Pro Tem Judges/Commissioners ⁽¹⁾

Category	Q1/22	Q2/22	Q3/22	Q4/22	Q1/23	Q2/23	Q3/23	Q4/23	Q1/24	Q2/24
Grand Total	900	2166	2012	1135	1543	1688	1226	1855	1894	2494
FTE Equivalent ⁽²⁾	2.0	4.8	4.5	2.5	3.4	3.8	2.7	4.1	4.2	5.5
By Work Type										
Pro Tem Judge	122	135	126	156	93	114	158	263	26	209
Pro Tem Commissioner	778	2031	1886	979	1450	1574	1068	1592	1868	2286
By Location										
KCCH	265	980	763	446	830	588	453	797	897	960
MRJC	256	468	687	285	480	572	328	632	698	978
Juvenile	144	305	391	224	134	295	327	299	188	321
ITA	145	376	126	180	98	216	118	127	111	235
Other or Unspecified	91	38	46	0	0	18	0	0	0	0
By Calendar Type										
Criminal	12	50	40	51	16	61	30	95	13	77
Civil	0	0	0	0	3	0	3	103	0	31
Ex Parte	187	475	280	253	340	470	308	514	438	347
Family Law/Domestic	321	922	1129	427	944	629	440	717	1145	1483
Dependency	125	257	351	119	68	259	202	234	175	220
Juvenile Offense	20	48	28	102	55	22	115	65	0	25
BECCA	0	0	12	3	12	15	10	0	13	77
ITA	145	376	126	180	98	216	118	127	111	235
Juvenile Drug Court	0	0	0	0	0	0	0	0	0	0
Family Treatment Court	0	0	0	0	0	0	0	0	0	0
Plea Calendar	0	0	0	0	0	0	0	0	0	0
Status/Non-Compliance	0	0	0	0	0	0	0	0	0	0
Other or Unspecified	91	0	46	0	8	18	0	0	0	0
By Reason										
Vacation Backfill	20	14	34	135	82	61	125	117	7	21
Medical Backfill	778	2031	1891	982	1461	1580	1078	1589	1881	2362
Duty Time	12	83	34	18	0	22	24	145	6	111
Conference Coverage	0	0	7	0	0	8	0	6	0	0
Congestion	0	0	0	0	0	0	0	0	0	0
Vacancy Coverage	0	0	0	0	0	0	0	0	0	0
Other or Unspecified	91	38	46	0	0	18	0	0	0	0

(1) This table is based on the time sheet for compensation

(2) Judge FTE Equivalent = # of hours / [7.5 hours/day * 20 days/month * 3 months] = # of hours/450.

Data for the most current quarter are incomplete at reporting time and will be updated in next quarterly report.

The Pro Tem hours are provided quarterly by the Administrative Services Department of King County Superior Court.

Table 8. Ex Parte and Family Law Hearings and Documents Signed

Ex Parte: Hearings Held and Documents Signed								
	2023Q3		2023Q4		2024Q1		2024Q2	
	Hearings	Documents Signed	Hearings	Documents Signed	Hearings	Documents Signed	Hearings	Documents Signed
KNT (EXP04/05)								
Civil	371	709	288	754	512	817	468	768
Domestic	34	271	16	220	36	343	50	369
Probate/Guardianship	351	410	173	365	377	411	475	502
Adoption/Paternity	29	77	17	43	15	42	14	38
Ex Parte Judge Panel (EXP08)		539		450		461		508
Ex Parte Via Clerk (EXP06)		3777		3701		3786		3643
KNT Subtotal	785	5783	494	5533	940	5860	1007	5828
SEA (EXP01/02)								
Civil	472	1076	353	1129	594	1132	607	1334
Domestic	61	319	42	245	99	464	82	605
Probate/Guardianship	767	916	387	752	720	830	761	926
Adoption/Paternity	61	153	49	144	33	109	45	115
Ex Parte Judge Panel (EXP08)		1236		1197		1072		1362
Ex Parte Via Clerk (EXP07)		7218		7360		8218		8057
SEA Total	1361	10918	831	10827	1446	11825	1495	12399
KNT/SEA Total	2146	16701	1325	16360	2386	17685	2502	18227
FAMILY LAW: Hearings Held and Documents Signed								
	2023Q3		2023Q4		2024Q1		2024Q2	
	Hearings	Documents Signed	Hearings	Documents Signed	Hearings	Documents Signed	Hearings	Documents Signed
KNT (FAM02)								
Civil	1254	769	1239	720	1331	793	1343	771
Domestic	331	809	292	715	322	765	287	689
Adoption/Paternity	85	280	69	210	75	228	102	284
KNT Subtotal	1670	1858	1600	1645	1728	1786	1732	1744
SEA (FAM01)								
Civil	1380	1225	1578	1423	1335	1154	1573	1409
Domestic	468	1021	411	933	406	963	410	941
Adoption/Paternity	36	226	36	212	48	219	42	211
SEA Total	1884	2472	2025	2568	1789	2336	2025	2561
KNT/SEA Total	3554	4330	3625	4213	3517	4122	3757	4305

Appendix Glossary and Definition

Active Status

A case is active if it is not on suspense status (see Suspense Status).

Adoption and Parentage Cases (case type 5)

ADP - Adoption
CFI - Confidential Intermediary
CHN - Confidential Change of Name
DIP - Disestablishment of Parentage
MDS - Modification/Support Only
MOD - Modification
MSC - Miscellaneous
OAA - Open Adoption Agreement
PAD - De Facto Parentage
PAG - Pre Birth Establish Parentage Genetic
PAS - Establish Parentage Gestational Surrogacy
PAT - Parentage
PPR - Initial Pre Placement Report
PRC - Parentage Rescission/Challenge
PUR - Parentage (URES/UISA)
REL - Relinquishment
ROB - Relocation Objection
TER - Termination of Parental Rights

Case

A case is defined as a filing with an assigned case number.

Civil Cases (case type 2, no RALJ)

ALR - Administrative Law Review
ALRLI - L&I Administrative Law Review
AOD - Assurance of Discontinuance
ASB - Asbestos
ASP - Asbestos Personal Injury
ASW - Asbestos Wrongful Death
BAT - Petition to Appeal/Amend Ballot Title
CAA - Motion to Confirm/Compel Arbitration Award
CHN - Non Confidential Change of Name
COL - Collection
COM - Commercial
CON - Condemnation
CRP - Certificate of Restoration of Opportunity
CRR - Petition for Certificate of Rehabilitation
DOL - Appeal Licensing Revocation
DSF - Notice of Deposit of Surplus Funds from Trustee's Sale of Real Property
DVP - Domestic Violence
ECP - Enforcement of Canadian Protection Order
EOM - Emancipation of Minor
FOR - Foreclosure
FPO - Foreign Protection Order
FVL - Motion to Show Cause /Frivolous Lien
HAR - Unlawful Harassment
HSI - Application for Health & Safety Inspection
INJ - Injunction
IPL - Complaint for Interpleader
LUP - Land Use Petition
MAL - Other Malpractice
MED - Medical Malpractice
MER - Meretricious Relationships
MHA - Malicious Harassment
MSC - Miscellaneous
MST - Minor Settlement
MWP - Minor Work Permit
NJF - Non Judicial Filing
OSS - Petition to Issue Out of State Subpoena
PBC - Petition for Birth Certificate Change
PBJ - Petition for Justification /Bail Bond Company
PCC - Petition for Civil Commitment
PFA - Property Fairness Act
PIN - Personal Injury

PPT - Petition for Perpetuation of Testimony
PRA - Public Records Act
PRG - Property Damage /Gangs
PRP - Property Damage
PVO - Petition for Vehicle Ownership
QTI - Quiet Title
RCV - Petition to Appoint Receiver
RDR - Relief from Duty to Register
RFR - Restoration of Firearms Rights
RRC - Remove Restricted Covenant
SCA - Small Claims Appeal
SDR - School District /Required Action Plan
SER - Subdivision Election Process Law Review
SPC - Seizure of Property From Commission of a Crime
SPR - Seizure of Property Resulting From a Crime
STK - Stalking Protection
SXP - Sexual Assault Protection
TMV - Tort /Motor Vehicle
TSS - Petition for Approval of Transfer of Structured Settlement
TTO - Tort /Other
UND - Unlawful Detainer
VAP - Vulnerable Adult Protection Order
VEP - Voter Election Process Law Review
VVT - Victims of Motor Vehicle Theft /Civil Action
WDE - Wrongful Death
WHC - Writ of Habeas Corpus
WMW - Miscellaneous Writs
WRM - Writ of Mandamus
WRR - Writ of Restitution
WRV - Writ of Review
XRP - Extreme Risk Protection Order

Civil Matters Filed with Clerk (case type 2)

ABJ - Abstract of Judgment
FJU - Foreign Judgment
TAX - Tax Warrants
TRJ - Transcript of Judgment
CFJ - Petition for Order Granting Judgment on Confession of Judgment

Civil RALJ Cases (case type 2)

LCA - Lower Court Appeal /Civil
LCI - Lower Court Appeal /Infractions

Completion

A case is completed if dispositive document is filed with the court following resolution.

Criminal Cases (case type 1, no RALJ)

Adult criminal cases, excluding appeals from courts of limited jurisdiction. This reporting category includes the following crime categories within SCOMIS case type 1:

Homicide
Sex Crime
Robbery
Assault
Theft/Burglary
Motor Vehicle Theft
Controlled Substance
Others

Criminal RALJ Cases (case type 1)

CRJ - Criminal RALJ

Domestic Cases (case type 3)

CIR - Committed Intimate Relationship
CUS - Child Custody
DIC - Dissolution w/ Children
DIN - Dissolution no Children
DIS - Dissolution
DPC - Dissolution of Domestic Partnership w/ Children
DPN - Dissolution of Domestic Partnership /No Children
FJU - Out of State Support Registration /Foreign Judgment
INC - Annulment /Inv of Marriage w/ Children
IND - Annulment /Inv of Domestic Partnership w/ Children
INP - Invalidity, Domestic Partnership
INV - Annulment /Invalidity
MDS - Modification/Support Only
MOD - Modification
MSC - Miscellaneous
MWA - Mandatory Wage Assignment
OSC - Out of State Custody
PPS - Parenting Plan / Child Support
PSO - Petition for Entry of KC Support Order
RCV - Relative Child Visitation
RIC - Reciprocal, Resp in County
ROB - Relocation /Objection
ROC - Reciprocal, Resp out of County
RVC - Relative Child Visits
SDC - Legal Separation, Domestic Partnership w/ Children
SEC - Legal Separation w/ Children
SEP - Legal Separation
SPD - Legal Separation, Domestic Partnership /No Children
TSS - Structured Settlement

Jury Trial

A hearing is reported as a jury trial if the jury is impaneled.

Juvenile BECCA Cases (case type 7)

ARY - At Risk Youth
CNS - Child In Need Of Services
DDP - Developmental Disability
DGN - Dependency Guardianship
EFC - Extended Foster Care, Dependency
GFC - Guardianship Foster Children
RPR - Reinstatement of Parental Rights
RVS - Relative Visitation
TRU - Truancy
VYG - Vulnerable Youth Guardianship

Juvenile Dependency Cases (case type 7)

DEP - Dependency
TER - Termination of Parental Rights

Juvenile Offense Cases (case type 8)

Homicide
Sex Crime
Robbery
Assault
Theft/Burglary
Motor Vehicle Theft

Controlled Substance
Others

Involuntary Treatment Act Cases (case type 6)

Alcoholic Treatment (ALT)
ITA - Adult (MI)
ITA - Family (MIF)
ITA - Juvenile (MIJ)

Non-Jury Trial

A hearing is reported as a non-jury trial if an opening statement is made, waived, or reserved.

Pending Case

A case is defined as pending if it is unresolved and active (not in suspense).

Post-disposition Modifications

Petition to modify parenting plan after the resolution of the original case, based on the modification schedule.

Probate and Guardianship Cases (case type 5)

ABS - Absentee
AOS - Affidavit of Successor
ASE - Affidavit of Small Estate
DSC - Disclaimer
EST - Estate
FNW - Foreign Will
G/E - Guardianship/Estate
GDE - Guardianship of the Estate
GDN - Guardianship
GDP - Guardianship of the Person
LGD - Limited Guardianship
LGE - Limited Guardianship of the Estate
LGP - Limited Guardianship of the Person
MGD - Minor Guardianship
MSC - Miscellaneous
MST - Minor Settlement
NJB - Non Judicial Binding/TEDRA Agreement
NNC - Non Probate Notice to Creditor
POA - Petition for Relief (RCW 11.94) /Power of Attorney
RGR - Registration of Guardianship
RTR - Registration of Trust /Trust Situs
SNT - Special Needs Trust
TDR - Trust/Estate Dispute Resolution
TRS - Trust
WLL - Will Only

Resolution

A case is resolved if all issues in the complaint are fully adjudicated.

Suspended Case

A case is placed in suspense status from active status during the reporting period.

Suspense Status

A case is on suspense status if it is on warrant, appeal, stay, mediation, arbitration ("Deferred Prosecution" is not a suspense status, but is treated as a resolution).

Trial

A hearing set before a judge or jury in which all the issues in the case are meant to be resolved. A trial normally includes opening statements to the court or jury stating what evidence will show, introduction of witnesses and exhibits for direct and cross examination, final arguments to the court or jury in which counsel argue both the evidence and the law, and judgment by the court or jury stating what the facts of the case are and what law applies to the facts. In a jury case, it also includes the selection of the jury. A trial can be held for one or more cases. A single trial may be held to adjudicate more than one case (as defined above).