



# King County

Department of Judicial Administration  
*Catherine Cornwall*  
*Director and Superior Court Clerk*  
(206) 296-9300 (206) 296-0100 TTY/TDD

King County Superior Court

## Civil Department Statistical Report

February 2024

Department of Judicial Administration  
Prepared by: Shiquan Liao, Ph.D., Statistician

March 15, 2024

**Report #: CIVIL-2024-02**

*Seattle Courthouse*  
516 Third Avenue Room E609  
Seattle, WA 98104-2386

*Maleng Regional Justice Center*  
401 Fourth Avenue North Room 2C  
Kent, WA 98032-4429

*Clark Children and Family  
Justice Center*  
1211 East Alder Room 3015  
Seattle, WA 98122-5598

## Civil Statistics Summary

**NOTE: Washington State Supreme Court orders related to the coronavirus pandemic, beginning March 2020, affect the statistics for the foreseeable future.**

The civil statistics report provides an overview of the caseload for the Civil and UFC Departments. The report includes the number of filings, number of resolutions, number of pending cases, age of resolved cases, and age of pending cases for both the SEA and MRJC locations.

The following categories are included in this report: **Civil, Domestic, Probate, Guardianship, Adoption, and Parentage.** This report includes all cases in these categories, regardless of whether or not a judge is assigned at filing.

*Please note that the category of “civil” in the tables of this report is more narrowly defined. Readers are encouraged to check the Appendix at the end of this report for precise definition of the terminology used in this report.*

- **Filings (Table 1, Figures 1)**

In February 2024, the total number of filings was 3,343 cases. Of those cases filed in the month, 41% were MRJC cases, and the remaining 59% were SEA cases. The year-to-date average filings were 3,309 cases per month. In comparison, the average monthly filings in 2019, 2020, 2021, 2022 and 2023 were 3,083, 2,436, 2,429, 2,601, and 2,953 cases respectively.

- **Resolutions (Table 2, Figures 2)**

The total resolutions in February 2024 were 3,038 cases. Of those cases resolved in the month, 40% of the resolutions were MRJC cases. In 2024, the average monthly resolutions were 3,053 cases. In comparison, the average monthly resolutions in 2019, 2020, 2021, 2022 and 2023 were 3,091, 2,378, 2,450, 2,592, and 2,756 cases, respectively.

- **The Age of Resolved Cases (Table 3)**

Table 3 shows the comparison between the court-adopted timeline standard (as suggested by the State Advisory Committee) with the actual age of resolved cases (time from filing to resolution).

- **Pending Caseload (Table 4, Figures 3) and Age of Pending Cases (Table 5)**

At the end of February 2024, the pending caseload for the civil department was 15,636 cases, 63% being SEA cases and 37% being MRJC cases. The age breakdown of pending cases is presented in Table 5. SEA had 233 civil cases over 24 months and 274 domestic cases over 18 months. MRJC had 224 general civil cases over 24 months and 210 domestic cases over 18 months.

**Conclusions: Filings in recent months have gradually increased from the low volume seen since COVID-19. In 2024, the average monthly filings were 3,309 cases. In the same time period, the court resolved 3,053 cases per month on average. At the end of February 2024, the total pending caseload in the reporting categories was 15,636 cases. In comparison, the pending caseload in the same reporting categories was 15,059, 14,371, 14,085, 12,941, 13,471, and 15,082 at the year end of 2018, 2019, 2020, 2021, 2022 and 2023 respectively.**

Figure 1. Monthly Filings for SEA, MRJC and SEA/MRJC Combined

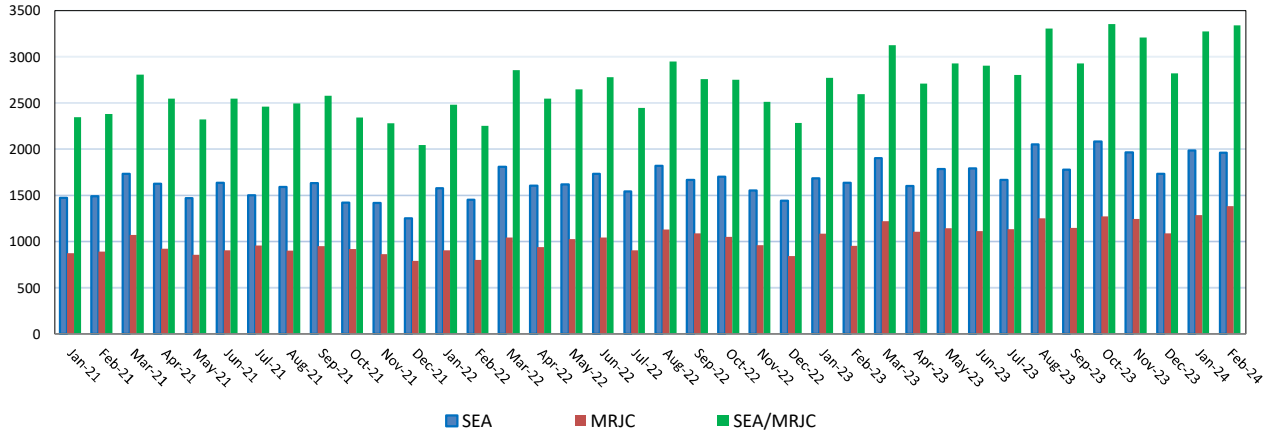


Figure 2. Monthly Resolutions for SEA, MRJC and SEA/MRJC Combined

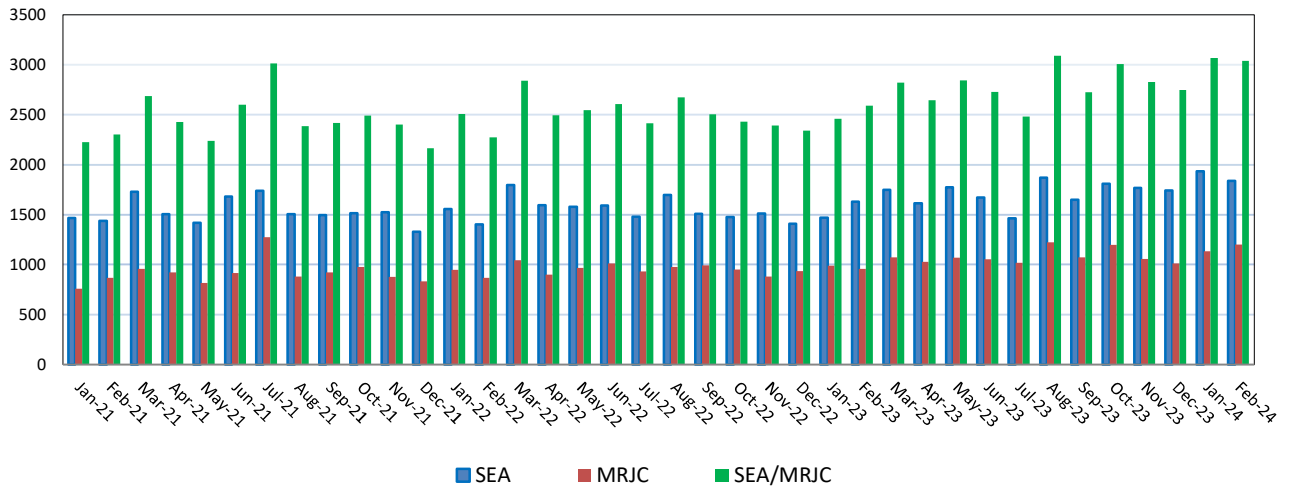


Figure 3. Monthly Pending Caseload for SEA, MRJC and SEA/MRJC Combined

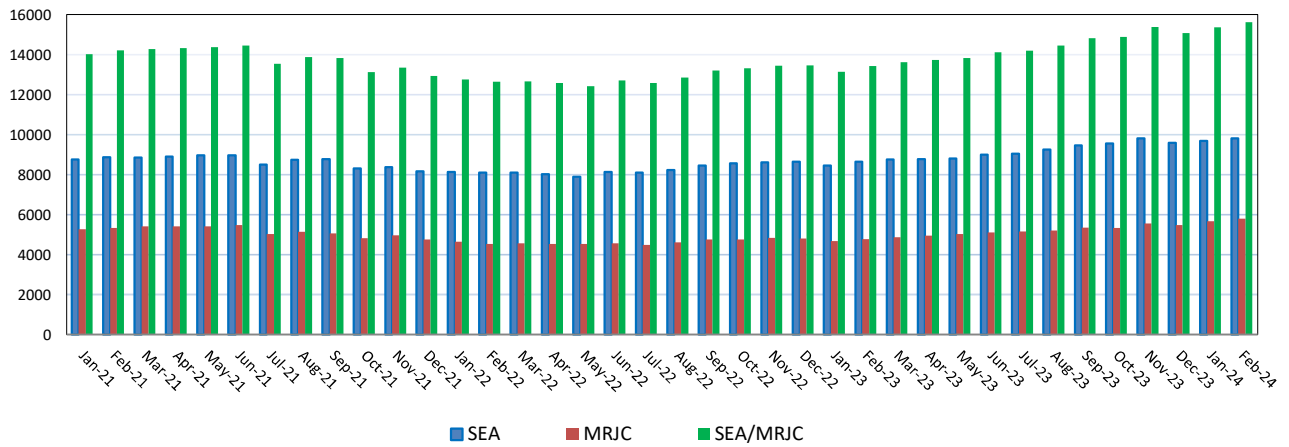


Table 1. Monthly New Filings

SEA	Jan	Feb	Mar	Apr	May	Jun	Jul	Aug	Sep	Oct	Nov	Dec
<b>TOTAL - SEA</b>												
2022	1578	1451	1810	1605	1620	1733	1543	1822	1669	1703	1552	1442
2023	1687	1638	1903	1604	1783	1793	1670	2052	1778	2082	1964	1734
2024	1988	1961										
<b>Civil - SEA</b>												
2022	749	624	804	734	798	861	783	878	781	868	783	686
2023	749	765	918	817	897	932	942	1138	948	1211	1124	1029
2024	1053	1068										
<b>Domestic - SEA</b>												
2022	298	275	326	333	314	343	286	348	327	296	275	262
2023	322	341	377	273	325	325	292	385	373	315	332	251
2024	335	326										
<b>Probate - SEA</b>												
2022	489	507	612	473	433	466	387	507	480	445	413	428
2023	520	467	516	439	483	451	367	445	383	468	453	387
2024	524	479										
<b>Guardianship - SEA</b>												
2022	14	11	12	36	51	38	45	52	44	49	43	33
2023	60	33	52	53	44	44	39	57	52	46	47	37
2024	46	46										
<b>Adoption - SEA</b>												
2022	16	25	39	17	15	18	27	24	22	33	22	16
2023	25	26	24	20	20	19	18	22	9	25	21	10
2024	16	27										
<b>Parentage - SEA</b>												
2022	12	9	17	12	9	7	15	13	15	11	16	17
2023	11	6	16	2	14	22	12	5	13	17	12	20
2024	14	15										

MRJC	Jan	Feb	Mar	Apr	May	Jun	Jul	Aug	Sep	Oct	Nov	Dec
<b>TOTAL - MRJC</b>												
2022	905	801	1045	942	1028	1045	906	1129	1089	1049	960	844
2023	1084	956	1223	1106	1144	1112	1134	1253	1148	1272	1244	1088
2024	1286	1382										
<b>Civil - MRJC</b>												
2022	493	399	567	523	560	603	517	631	594	600	541	473
2023	585	552	691	614	662	669	699	810	746	793	695	729
2024	826	908										
<b>Domestic - MRJC</b>												
2022	179	165	223	199	214	182	167	237	235	195	176	147
2023	213	187	249	229	221	209	216	203	177	213	209	166
2024	205	172										
<b>Probate - MRJC</b>												
2022	192	201	215	174	182	197	166	185	205	177	191	170
2023	221	170	206	206	196	166	160	188	154	199	186	149
2024	203	243										
<b>Guardianship - MRJC</b>												
2022	15	15	18	29	47	41	33	51	23	45	35	33
2023	38	38	58	36	39	40	34	33	48	45	40	29
2024	42	47										
<b>Adoption - MRJC</b>												
2022	4	9	7	7	6	7	7	10	15	9	3	5
2023	8	1	5	9	10	10	8	9	3	10	7	1
2024	2	2										
<b>Parentage - MRJC</b>												
2022	22	12	15	10	19	15	16	15	17	23	14	16
2023	19	8	14	12	16	18	17	10	20	12	15	14
2024	8	10										

“Civil” includes all civil actions (including RALJ), except “Matters Filed with Clerk” (Petition for Order Granting Judgment on Confession of Judgment, Tax Warrants, Abstract of Judgment, Foreign Judgment, and Transcript of Judgment), Domestic, Probate, Guardianship, Adoption, and Paternity cases.

Table 2. Monthly Resolutions

SEA	Jan	Feb	Mar	Apr	May	Jun	Jul	Aug	Sep	Oct	Nov	Dec
<b>TOTAL - SEA</b>												
2022	1559	1403	1797	1594	1578	1593	1480	1697	1508	1478	1510	1407
2023	1470	1630	1746	1615	1775	1674	1463	1868	1643	1808	1770	1740
2024	1934	1837										
<b>Civil - SEA</b>												
2022	734	622	808	733	783	781	744	808	676	716	764	625
2023	681	801	842	825	897	853	769	1039	893	1000	937	959
2024	1101	1019										
<b>Domestic - SEA</b>												
2022	357	276	387	300	308	296	299	342	298	294	252	318
2023	255	283	325	291	350	315	266	322	293	291	340	328
2024	305	309										
<b>Probate - SEA</b>												
2022	418	438	535	467	404	455	380	479	455	386	420	409
2023	454	482	499	435	455	425	366	427	391	433	402	395
2024	464	430										
<b>Guardianship - SEA</b>												
2022	35	37	32	47	38	32	33	42	47	41	37	32
2023	43	36	45	32	36	57	36	47	39	49	50	35
2024	42	49										
<b>Adoption - SEA</b>												
2022	13	16	29	29	30	22	15	19	18	29	26	16
2023	20	15	28	25	22	14	16	26	20	20	25	15
2024	15	14										
<b>Parentage - SEA</b>												
2022	12	14	26	18	15	7	9	7	14	12	11	7
2023	17	13	7	7	15	10	10	7	13	15	16	8
2024	7	16										

MRJC	Jan	Feb	Mar	Apr	May	Jun	Jul	Aug	Sep	Oct	Nov	Dec
<b>TOTAL - MRJC</b>												
2022	948	869	1045	898	967	1012	934	977	993	952	881	935
2023	988	959	1073	1030	1069	1053	1019	1221	1074	1198	1057	1009
2024	1134	1201										
<b>Civil - MRJC</b>												
2022	499	442	553	504	487	564	521	544	561	558	470	514
2023	501	560	622	589	615	613	624	758	681	768	648	617
2024	718	726										
<b>Domestic - MRJC</b>												
2022	222	207	222	177	227	181	197	217	184	173	187	195
2023	208	179	202	190	210	208	202	216	189	200	187	188
2024	186	198										
<b>Probate - MRJC</b>												
2022	180	160	209	156	185	210	147	165	203	169	167	161
2023	214	178	199	186	190	161	143	185	144	178	175	166
2024	177	229										
<b>Guardianship - MRJC</b>												
2022	24	34	20	34	39	32	47	28	27	33	30	36
2023	46	25	31	45	34	44	27	40	32	41	28	30
2024	35	29										
<b>Adoption - MRJC</b>												
2022	5	4	18	4	9	5	7	5	7	7	8	14
2023	7	3	2	1	10	17	4	6	12	3	6	4
2024	3	4										
<b>Parentage - MRJC</b>												
2022	18	22	23	23	20	20	15	18	11	12	19	15
2023	12	14	17	19	10	10	19	16	16	8	13	4
2024	15	15										

“Civil” includes all civil actions (including RALJ), except “Matters Filed with Clerk” (Petition for Order Granting Judgment on Confession of Judgment, Tax Warrants, Abstract of Judgment, Foreign Judgment, and Transcript of Judgment), Domestic, Probate, Guardianship, Adoption, and Parentage cases.

Table 3. Percentage of Cases Resolved in Specified Time Intervals

SEA	Feb 2023	Mar 2023	Apr 2023	May 2023	Jun 2023	Jul 2023	Aug 2023	Sep 2023	Oct 2023	Nov 2023	Dec 2023	Jan 2024	Feb 2024
<b>Civil - SEA</b>													
90% in 12 months	86%	87%	87%	86%	85%	87%	88%	91%	94%	91%	88%	83%	88%
98% in 18 months	94%	95%	95%	96%	93%	95%	95%	97%	99%	97%	95%	91%	95%
100% in 24 months	97%	98%	96%	96%	96%	98%	98%	98%	99%	99%	98%	95%	98%
<b>Domestic - SEA</b>													
90% in 8 months	58%	52%	55%	63%	64%	54%	63%	61%	61%	56%	60%	56%	61%
98% in 10 months	68%	63%	66%	69%	74%	64%	70%	69%	67%	63%	70%	64%	68%
100% in 14 months	88%	87%	91%	88%	88%	85%	89%	88%	85%	82%	86%	84%	85%
<b>Probate - SEA</b>													
90% in 8 months	98%	98%	99%	98%	98%	98%	97%	96%	99%	100%	98%	99%	99%
98% in 18 months	100%	100%	100%	99%	99%	99%	99%	99%	100%	100%	99%	100%	100%
100% in 36 months	100%	100%	100%	100%	100%	100%	100%	100%	100%	100%	100%	100%	100%
<b>Guardianship - SEA</b>													
90% in 8 months	94%	89%	100%	100%	100%	97%	96%	97%	98%	94%	89%	93%	100%
98% in 18 months	97%	100%	100%	100%	100%	100%	100%	100%	100%	100%	97%	100%	100%
100% in 36 months	100%	100%	100%	100%	100%	100%	100%	100%	100%	100%	100%	100%	100%
<b>Adoption - SEA</b>													
90% in 8 months	100%	96%	96%	86%	93%	81%	85%	85%	90%	100%	100%	67%	64%
98% in 10 months	100%	100%	100%	91%	93%	88%	88%	95%	90%	100%	100%	67%	71%
100% in 14 months	100%	100%	100%	91%	100%	88%	88%	100%	90%	100%	100%	67%	71%
<b>Parentage - SEA</b>													
90% in 8 months	77%	86%	57%	60%	70%	60%	57%	77%	87%	69%	75%	86%	56%
98% in 10 months	77%	86%	57%	80%	80%	70%	86%	85%	87%	81%	88%	86%	75%
100% in 14 months	77%	86%	100%	87%	90%	90%	86%	100%	100%	94%	88%	86%	94%
<b>MRJC</b>													
<b>Civil - MRJC</b>													
90% in 12 months	94%	92%	93%	90%	93%	94%	95%	93%	94%	94%	91%	89%	94%
98% in 18 months	98%	97%	96%	96%	97%	98%	98%	97%	99%	97%	96%	92%	98%
100% in 24 months	99%	98%	97%	96%	98%	99%	99%	99%	99%	99%	97%	96%	99%
<b>Domestic - MRJC</b>													
90% in 8 months	55%	92%	57%	61%	59%	51%	64%	62%	54%	55%	49%	66%	58%
98% in 10 months	61%	97%	66%	70%	73%	62%	73%	70%	64%	72%	65%	74%	65%
100% in 14 months	83%	98%	88%	88%	90%	89%	89%	88%	86%	87%	86%	90%	84%
<b>Probate - MRJC</b>													
90% in 8 months	98%	96%	98%	100%	99%	97%	100%	96%	99%	99%	98%	100%	99%
98% in 18 months	100%	99%	99%	100%	99%	99%	100%	99%	100%	100%	100%	100%	100%
100% in 36 months	100%	100%	99%	100%	100%	100%	100%	100%	100%	100%	100%	100%	100%
<b>Guardianship - MRJC</b>													
90% in 8 months	96%	94%	93%	91%	91%	93%	100%	91%	95%	100%	93%	97%	90%
98% in 18 months	100%	100%	98%	100%	100%	100%	100%	97%	100%	100%	97%	100%	100%
100% in 36 months	100%	100%	100%	100%	100%	100%	100%	100%	100%	100%	100%	100%	100%
<b>Adoption - MRJC</b>													
90% in 8 months	100%	100%	100%	90%	59%	100%	100%	100%	67%	100%	75%	67%	25%
98% in 10 months	100%	100%	100%	90%	65%	100%	100%	100%	67%	100%	75%	100%	75%
100% in 14 months	100%	100%	100%	100%	71%	100%	100%	100%	100%	100%	75%	100%	75%
<b>Parentage - MRJC</b>													
90% in 8 months	43%	59%	53%	60%	60%	53%	31%	56%	50%	46%	0%	27%	47%
98% in 10 months	57%	82%	79%	70%	70%	84%	63%	69%	88%	54%	0%	60%	67%
100% in 14 months	86%	88%	95%	80%	80%	90%	81%	81%	88%	62%	100%	87%	80%

Age of resolved cases – the time between filing and resolution, minus any suspense time if applicable.

Court adopted time guideline (based on suggestion from BJA State Advisory Committee, see LCR 4 official comment): (a) Civil - 90% by 360 days (12 months), 98% by 540 days (18 months); (b) Domestic - 90% by 240 days (8 months), 98% by 300 days (10 months); (c) Probate/Guardianship - 90% by 240 days (8 months), 98% by 540 days (18 months); (d) Adoption/Parentage - 90% by 240 days (8 months); 98% by 300 days (10 months).

“Civil” includes all civil actions (including RALJ), except “Matters Filed with Clerk” (Petition for Order Granting Judgment on Confession of Judgment, Tax Warrants, Abstract of Judgment, Foreign Judgment, and Transcript of Judgment), Domestic, Probate, Guardianship, Adoption, and Parentage cases.

Table 4. Pending Caseload at the End of the Month

SEA	Jan	Feb	Mar	Apr	May	Jun	Jul	Aug	Sep	Oct	Nov	Dec
<b>TOTAL - SEA</b>												
2022	8138	8111	8102	8036	7906	8140	8099	8239	8460	8567	8610	8651
2023	8465	8659	8764	8775	8815	9001	9053	9251	9466	9564	9815	9597
2024	9696	9827										
<b>Civil - SEA</b>												
2022	4151	4209	4177	4156	4086	4230	4203	4290	4428	4499	4522	4593
2023	4420	4514	4531	4563	4599	4734	4801	4897	5019	5121	5313	5244
2024	5234	5306										
<b>Domestic - SEA</b>												
2022	2494	2483	2522	2509	2478	2555	2509	2531	2580	2559	2588	2544
2023	2491	2599	2663	2638	2623	2638	2635	2713	2816	2781	2809	2676
2024	2739	2751										
<b>Probate - SEA</b>												
2022	960	934	937	864	862	866	876	895	916	972	958	966
2023	1012	991	1010	1004	1024	1050	1040	1058	1046	1081	1122	1111
2024	1166	1205										
<b>Guardianship - SEA</b>												
2022	270	225	196	260	266	274	279	283	287	294	290	285
2023	295	293	297	317	323	313	314	323	334	326	318	314
2024	306	305										
<b>Adoption - SEA</b>												
2022	177	182	197	182	158	156	169	175	178	178	181	181
2023	179	193	186	180	177	182	178	177	169	172	172	159
2024	155	164										
<b>Parentage - SEA</b>												
2022	86	78	73	65	56	56	63	65	71	65	71	82
2023	68	69	77	73	69	84	85	83	82	83	81	93
2024	96	96										

MRJC	Jan	Feb	Mar	Apr	May	Jun	Jul	Aug	Sep	Oct	Nov	Dec
<b>TOTAL - MRJC</b>												
2022	4638	4544	4567	4548	4528	4570	4488	4616	4754	4761	4837	4820
2023	4686	4773	4873	4957	5025	5117	5150	5205	5358	5336	5570	5485
2024	5678	5809										
<b>Civil - MRJC</b>												
2022	2007	1990	2016	2008	2026	2072	2049	2112	2158	2156	2218	2235
2023	2198	2241	2267	2297	2343	2428	2450	2519	2640	2612	2813	2831
2024	2947	3069										
<b>Domestic - MRJC</b>												
2022	1727	1695	1748	1757	1724	1739	1675	1695	1779	1762	1769	1737
2023	1670	1702	1754	1800	1809	1810	1799	1799	1808	1787	1801	1728
2024	1776	1768										
<b>Probate - MRJC</b>												
2022	460	452	418	373	368	350	368	383	386	393	415	422
2023	409	411	410	428	433	435	451	453	460	480	484	461
2024	492	505										
<b>Guardianship - MRJC</b>												
2022	193	158	152	190	197	200	188	211	205	214	204	204
2023	184	203	225	213	215	219	222	212	229	229	235	227
2024	232	247										
<b>Adoption - MRJC</b>												
2022	83	82	75	78	74	75	73	80	87	90	87	78
2023	79	77	80	87	86	81	84	86	79	85	83	78
2024	78	74										
<b>Parentage - MRJC</b>												
2022	168	167	158	142	139	134	135	135	139	146	144	144
2023	146	139	137	132	139	144	144	136	142	143	154	160
2024	153	146										

SEA/MRJC	Jan	Feb	Mar	Apr	May	Jun	Jul	Aug	Sep	Oct	Nov	Dec
2022	12776	12655	12669	12584	12434	12710	12587	12855	13214	13328	13447	13471
2023	13151	13432	13637	13732	13840	14118	14203	14456	14824	14900	15385	15082
2024	15374	15636										

Pending caseload = cases remain active and unresolved at the end of reporting period, excluding cases on suspense status (in arbitration, appeal).

Table 5. Age of Pending Cases

SEA	Feb 2023	Mar 2023	Apr 2023	May 2023	Jun 2023	Jul 2023	Aug 2023	Sep 2023	Oct 2023	Nov 2023	Dec 2023	Jan 2024	Feb 2024
<b>Civil - SEA</b>													
Median Age (50 <sup>th</sup> percentile) *	173	166	166	163	155	155	156	152	148	142	145	143	142
<b># of Cases in Age Interval</b>													
0 - 120 days (0 - 4 months)	1723	1789	1867	1881	1974	2012	2077	2116	2253	2373	2284	2332	2324
121 - 240 days (5 - 8 months)	1136	1103	1038	1060	1073	1104	1139	1147	1108	1140	1224	1186	1295
241 - 360 days (9 - 12 months)	766	764	791	787	753	732	709	711	717	725	709	718	714
361 - 540 days (13 - 18 months)	416	417	441	452	514	530	543	587	580	572	522	499	485
541 - 720 days (19 - 24 months)	187	185	175	167	175	169	176	207	208	240	255	265	255
> 720 days (> 24 months)	286	273	251	252	245	254	253	251	255	263	250	234	233
<b>Domestic - SEA</b>													
Median Age (50 <sup>th</sup> percentile) *	156	148	145	142	145	151	151	145	142	143	152	155	157
<b># of Cases in Age Interval</b>													
0 - 120 days (0 - 4 months)	1099	1186	1192	1173	1135	1105	1176	1237	1233	1242	1109	1098	1111
121 - 240 days (5 - 8 months)	644	627	571	576	612	666	671	686	658	648	689	750	744
241 - 360 days (9 - 12 months)	427	420	424	423	412	375	356	366	372	413	396	399	393
361 - 540 days (13 - 18 months)	182	180	197	198	235	248	271	274	260	246	212	218	229
> 540 days (> 18 months)	247	250	254	253	244	241	239	253	258	260	270	274	274
<b>Probate - SEA</b>													
Median Age (50 <sup>th</sup> percentile) *	478	495	520	490	488	521	539	573	575	568	605	586	568
<b># of Cases in Age Interval</b>													
0 - 120 days (0 - 4 months)	227	240	233	232	244	232	234	209	224	241	212	251	268
121 - 240 days (5 - 8 months)	105	103	94	114	107	105	120	113	118	111	114	106	113
241 - 360 days (9 - 12 months)	108	91	88	79	78	73	68	81	81	93	101	98	99
361 - 540 days (13 - 18 months)	88	91	97	99	122	121	107	98	100	97	89	107	111
> 540 days (> 18 months)	463	485	492	500	499	509	529	545	558	580	595	604	614
<b>Guardianship - SEA</b>													
Median Age (50 <sup>th</sup> percentile) *	335	312	276	300	337	368	374	370	412	461	499	552	581
<b># of Cases in Age Interval</b>													
0 - 120 days (0 - 4 months)	98	108	128	122	106	104	105	108	105	100	99	96	89
121 - 240 days (5 - 8 months)	36	27	22	27	30	31	38	33	24	23	17	20	25
241 - 360 days (9 - 12 months)	20	19	24	25	26	18	17	23	25	20	25	11	9
361 - 540 days (13 - 18 months)	27	22	21	22	22	31	27	29	30	29	25	24	23
> 540 days (> 18 months)	112	121	122	127	129	130	136	141	142	146	148	155	159
<b>Adoption - SEA</b>													
Median Age (50 <sup>th</sup> percentile) *	313	409	441	472	493	463	497	594	623	653	787	608	539
<b># of Cases in Age Interval</b>													
0 - 120 days (0 - 4 months)	56	48	47	45	42	40	36	28	34	35	24	33	45
121 - 240 days (5 - 8 months)	31	23	17	14	19	19	22	22	15	11	11	12	14
241 - 360 days (9 - 12 months)	11	19	19	17	19	13	11	7	9	10	12	12	8
361 - 540 days (13 - 18 months)	15	15	16	20	18	23	20	24	23	20	15	12	15
> 540 days (> 18 months)	80	81	81	81	84	83	88	88	91	96	97	86	82
<b>Parentage - SEA</b>													
Median Age (50 <sup>th</sup> percentile) *	126	121	146	143	114	120	122	126	146	157	144	135	141
<b># of Cases in Age Interval</b>													
0 - 120 days (0 - 4 months)	32	38	29	27	43	43	41	39	35	32	43	42	45
121 - 240 days (5 - 8 months)	25	23	27	27	22	21	19	19	26	22	23	23	21
241 - 360 days (9 - 12 months)	4	9	10	10	13	16	17	12	9	13	12	16	18
361 - 540 days (13 - 18 months)	3	3	3	2	3	3	5	11	11	12	13	14	8
> 540 days (> 18 months)	5	4	4	3	3	2	1	1	2	2	2	1	4

\*Age of active pending cases is time elapsed from filing date to the end of the reporting period, minus any suspense time (in appeal, stay, mediation, arbitration) if applicable. The "median age" indicates the age of half (50%) of the pending cases (half are more, half are less) than the number of days indicated in the table.

"Civil" includes all civil actions (including RALJ), except "Matters Filed with Clerk" (Petition for Order Granting Judgment on Confession of Judgment, Tax Warrants, Abstract of Judgment, Foreign Judgment, and Transcript of Judgment), Domestic, Probate, Guardianship, Adoption, and Paternity cases.



Table 5. Age of Pending Cases (cont.)

MRJC	Feb 2023	Mar 2023	Apr 2023	May 2023	Jun 2023	Jul 2023	Aug 2023	Sep 2023	Oct 2023	Nov 2023	Dec 2023	Jan 2024	Feb 2024
<b>Civil - MRJC</b>													
Median Age (50 <sup>th</sup> percentile) *	166	155	147	140	141	141	136	123	124	116	123	119	116
<b># of Cases in Age Interval</b>													
0 - 120 days (0 - 4 months)	905	983	1043	1055	1099	1108	1169	1298	1292	1426	1395	1490	1565
121 - 240 days (5 - 8 months)	496	486	461	479	488	524	549	520	501	543	614	678	732
241 - 360 days (9 - 12 months)	301	312	305	317	332	298	267	260	269	292	320	297	277
361 - 540 days (13 - 18 months)	186	167	183	186	200	202	206	236	210	207	171	175	185
541 - 720 days (19 - 24 months)	68	69	70	75	79	88	94	85	92	85	89	87	86
> 720 days (> 24 months)	285	250	235	231	230	230	234	241	248	260	242	220	224
<b>Domestic- MRJC</b>													
Median Age (50 <sup>th</sup> percentile) *	160	157	151	139	141	147	150	159	160	156	164	170	171
<b># of Cases in Age Interval</b>													
0 - 120 days (0 - 4 months)	666	732	810	829	801	781	746	734	746	725	667	685	683
121 - 240 days (5 - 8 months)	444	456	401	383	401	434	488	484	458	476	451	462	462
241 - 360 days (9 - 12 months)	264	245	257	260	258	242	223	228	237	258	273	282	269
361 - 540 days (13 - 18 months)	120	116	122	135	145	132	134	148	135	128	118	127	144
> 540 days (> 18 months)	208	205	210	202	205	210	208	214	211	214	219	220	210
<b>Probate - MRJC</b>													
Median Age (50 <sup>th</sup> percentile) *	467	470	431	402	421	385	410	403	400	429	490	470	477
<b># of Cases in Age Interval</b>													
0 - 120 days (0 - 4 months)	104	106	126	135	129	132	115	111	135	127	100	114	124
121 - 240 days (5 - 8 months)	58	60	54	41	42	45	62	70	58	55	48	51	54
241 - 360 days (9 - 12 months)	28	26	27	30	38	44	38	34	34	38	47	54	45
361 - 540 days (13 - 18 months)	30	25	23	24	23	21	26	34	41	45	47	47	52
> 540 days (> 18 months)	191	193	198	203	203	209	212	211	212	219	219	226	230
<b>Guardianship - MRJC</b>													
Median Age (50 <sup>th</sup> percentile) *	188	144	172	169	173	175	230	202	223	247	280	257	234
<b># of Cases in Age Interval</b>													
0 - 120 days (0 - 4 months)	88	108	95	98	97	92	76	95	89	87	78	89	100
121 - 240 days (5 - 8 months)	31	23	21	24	24	31	31	30	32	30	26	26	25
241 - 360 days (9 - 12 months)	18	23	21	19	23	16	17	17	16	23	23	19	21
361 - 540 days (13 - 18 months)	18	20	19	15	15	21	22	20	21	22	28	14	16
> 540 days (> 18 months)	48	51	57	59	60	62	66	67	71	73	72	84	85
<b>Adoption - MRJC</b>													
Median Age (50 <sup>th</sup> percentile) *	1087	1109	753	841	1198	986	933	1293	1050	1136	1389	1415	1460
<b># of Cases in Age Interval</b>													
0 - 120 days (0 - 4 months)	6	8	14	13	15	17	18	11	15	12	8	8	5
121 - 240 days (5 - 8 months)	11	10	8	8	2	3	3	3	6	7	7	6	7
241 - 360 days (9 - 12 months)	7	6	8	8	10	8	7	6	1	1	0	2	3
361 - 540 days (13 - 18 months)	7	9	10	5	7	8	10	9	12	11	9	8	6
> 540 days (> 18 months)	46	47	47	52	47	48	48	50	51	52	54	54	53
<b>Parentage - MRJC</b>													
Median Age (50 <sup>th</sup> percentile) *	152	137	162	167	169	156	151	150	155	151	161	170	168
<b># of Cases in Age Interval</b>													
0 - 120 days (0 - 4 months)	54	54	50	47	56	62	57	55	57	62	65	57	53
121 - 240 days (5 - 8 months)	38	38	41	48	41	33	35	39	39	46	41	44	44
241 - 360 days (9 - 12 months)	18	17	15	18	20	20	20	22	20	22	27	25	26
361 - 540 days (13 - 18 months)	22	21	18	14	14	12	10	12	14	12	16	15	15
> 540 days (> 18 months)	7	7	8	12	13	17	14	14	13	12	11	12	8

\*Age of active pending cases is time elapsed from filing date to the end of the reporting period, minus any suspense time (in appeal, stay, mediation, arbitration) if applicable. The "median age" indicates the age of half (50%) of the pending cases (half are more, half are less) than the number of days indicated in the table.

"Civil" includes all civil actions (including RALJ), except "Matters Filed with Clerk" (Petition for Order Granting Judgment on Confession of Judgment, Tax Warrants, Abstract of Judgment, Foreign Judgment, and Transcript of Judgment), Domestic, Probate, Guardianship, Adoption, and Parentage cases.

Table 6. SEA/MRJC Filings, Resolutions, and Pending Caseload as a Percentage of All Cases

	Feb 2023	Mar 2023	Apr 2023	May 2023	Jun 2023	Jul 2023	Aug 2023	Sep 2023	Oct 2023	Nov 2023	Dec 2023	Jan 2024	Feb 2024
<b>Total Filings</b>	<b>2594</b>	<b>3126</b>	<b>2710</b>	<b>2927</b>	<b>2905</b>	<b>2804</b>	<b>3305</b>	<b>2926</b>	<b>3354</b>	<b>3208</b>	<b>2822</b>	<b>3274</b>	<b>3343</b>
SEA - # of Cases Filed	1638	1903	1604	1783	1793	1670	2052	1778	2082	1964	1734	1988	1961
MRJC - # of Cases Filed	956	1223	1106	1144	1112	1134	1253	1148	1272	1244	1088	1286	1382
SEA %	63%	61%	59%	61%	62%	60%	62%	61%	62%	61%	61%	61%	59%
MRJC %	37%	39%	41%	39%	38%	40%	38%	39%	38%	39%	39%	39%	41%
<b>Total Resolutions</b>	<b>2589</b>	<b>2819</b>	<b>2645</b>	<b>2844</b>	<b>2727</b>	<b>2482</b>	<b>3089</b>	<b>2723</b>	<b>3006</b>	<b>2827</b>	<b>2749</b>	<b>3068</b>	<b>3038</b>
SEA - # of Cases Resolved	1630	1746	1615	1775	1674	1463	1868	1649	1808	1770	1740	1934	1837
MRJC - # of Cases Resolved	959	1073	1030	1069	1053	1019	1221	1074	1198	1057	1009	1134	1201
SEA %	63%	62%	61%	62%	61%	59%	60%	61%	60%	63%	63%	63%	60%
MRJC %	37%	38%	39%	38%	39%	41%	40%	39%	40%	37%	37%	37%	40%
<b>Total Pending Cases</b>	<b>13432</b>	<b>13637</b>	<b>13732</b>	<b>13840</b>	<b>14118</b>	<b>14203</b>	<b>14456</b>	<b>14824</b>	<b>14900</b>	<b>15385</b>	<b>15082</b>	<b>15374</b>	<b>15636</b>
SEA - # of Cases Pending	8659	8764	8775	8815	9001	9053	9251	9466	9564	9815	9597	9696	9827
MRJC - # of Cases Pending	4773	4873	4957	5025	5117	5150	5205	5358	5336	5570	5485	5678	5809
SEA %	64%	64%	64%	64%	64%	64%	64%	64%	64%	64%	64%	63%	63%
MRJC %	36%	36%	36%	36%	36%	36%	36%	36%	36%	36%	36%	37%	37%

All civil actions (including RALJ), except "Matters Filed with Clerk" (Petition for Order Granting Judgment on Confession of Judgment, Tax Warrants, Abstract of Judgment, Foreign Judgment, and Transcript of Judgment), Domestic, Probate, Guardianship, Adoption, and Parentage cases.

## Appendix Glossary and Definition

### **Active Status**

A case is active if it is not on suspense status (see Suspense Status).

### **Adoption and Parentage Cases (case type 5)**

ADP - Adoption  
CFI - Confidential Intermediary  
CHN - Confidential Change of Name  
DIP - Disestablishment of Parentage  
MDS - Modification/Support Only  
MOD - Modification  
MSC - Miscellaneous  
OAA - Open Adoption Agreement  
PAD - De Facto Parentage  
PAG - Pre Birth Establish Parentage Genetic  
PAS - Establish Parentage Gestational Surrogacy  
PAT - Parentage  
PPR - Initial Pre Placement Report  
PRC - Parentage Rescission/Challenge  
PUR - Parentage (URES/UIFSA)  
REL - Relinquishment  
ROB - Relocation Objection  
TER - Termination of Parental Rights

### **Case**

A case is defined as a filing with an assigned case number.

### **Civil Cases (case type 2, no RALJ)**

ALR - Administrative Law Review  
ALRLI - L&I Administrative Law Review  
AOD - Assurance of Discontinuance  
ASB - Asbestos  
ASP - Asbestos Personal Injury  
ASW - Asbestos Wrongful Death  
BAT - Petition to Appeal/Amend Ballot Title  
CAA - Motion to Confirm/Compel Arbitration Award  
CFJ - Petition for Order Granting Judgment on Confession of Judgment  
CHN - Non Confidential Change of Name  
COL - Collection  
COM - Commercial  
CON - Condemnation  
CRP - Certificate of Restoration of Opportunity  
CRR - Petition for Certificate of Rehabilitation  
DOL - Appeal Licensing Revocation  
DSF - Notice of Deposit of Surplus Funds from Trustee's Sale of Real Property  
DVP - Domestic Violence  
ECP - Enforcement of Canadian Protection Order  
EOM - Emancipation of Minor  
FOR - Foreclosure  
FPO - Foreign Protection Order  
FVL - Motion to Show Cause /Frivolous Lien  
HAR - Unlawful Harassment  
HSI - Application for Health & Safety Inspection  
INJ - Injunction  
IPL - Complaint for Interpleader  
LUP - Land Use Petition  
MAL - Other Malpractice  
MED - Medical Malpractice  
MER - Meretricious Relationships  
MHA - Malicious Harassment  
MSC - Miscellaneous  
MST - Minor Settlement  
MWP - Minor Work Permit  
NJF - Non Judicial Filing  
OSS - Petition to Issue Out of State Subpoena  
PBC - Petition for Birth Certificate Change  
PBJ - Petition for Justification /Bail Bond Company  
PCC - Petition for Civil Commitment  
PFA - Property Fairness Act  
PIN - Personal Injury  
PPT - Petition for Perpetuation of Testimony

PRA - Public Records Act  
PRG - Property Damage /Gangs  
PRP - Property Damage  
PVO - Petition for Vehicle Ownership  
QTI - Quiet Title  
RCV - Petition to Appoint Receiver  
RDR - Relief from Duty to Register  
RFR - Restoration of Firearms Rights  
RRC - Remove Restricted Covenant  
SCA - Small Claims Appeal  
SDR - School District /Required Action Plan  
SER - Subdivision Election Process Law Review  
SPC - Seizure of Property From Commission of a Crime  
SPR - Seizure of Property Resulting From a Crime  
STK - Stalking Protection  
SXP - Sexual Assault Protection  
TMV - Tort /Motor Vehicle  
TSS - Petition for Approval of Transfer of Structured Settlement  
TTO - Tort /Other  
UND - Unlawful Detainer  
VAP - Vulnerable Adult Protection Order  
VEP - Voter Election Process Law Review  
VVT - Victims of Motor Vehicle Theft /Civil Action  
WDE - Wrongful Death  
WHC - Writ of Habeas Corpus  
WMW - Miscellaneous Writs  
WRM - Writ of Mandamus  
WRR - Writ of Restitution  
WRV - Writ of Review  
XRP - Extreme Risk Protection Order

### **Completion**

A case is completed if dispositive document is filed with the court following resolution.

### **Domestic Cases (case type 3)**

CIR - Committed Intimate Relationship  
CUS - Child Custody  
DIC - Dissolution w/ Children  
DIN - Dissolution no Children  
DIS - Dissolution  
DPC - Dissolution of Domestic Partnership w/ Children  
DPN - Dissolution of Domestic Partnership /No Children  
FJU - Out of State Support Registration /Foreign Judgment  
INC - Annulment /Inv of Marriage w/ Children  
IND - Annulment /Inv of Domestic Partnership w/ Children  
INP - Invalidity, Domestic Partnership  
INV - Annulment /Invalidity  
MDS - Modification/Support Only  
MOD - Modification  
MSC - Miscellaneous  
MWA - Mandatory Wage Assignment  
OSC - Out of State Custody  
PPS - Parenting Plan / Child Support  
PSO - Petition for Entry of KC Support Order  
RCV - Relative Child Visitation  
RIC - Reciprocal, Resp in County  
ROB - Relocation /Objection  
ROC - Reciprocal, Resp out of County  
RVC - Relative Child Visits  
SDC - Legal Separation, Domestic Partnership w/ Children  
SEC - Legal Separation w/ Children  
SEP - Legal Separation  
SPD - Legal Separation, Domestic Partnership /No Children  
TSS - Structured Settlement  
EFC - Extended Foster Care, Dependency  
GFC - Guardianship Foster Children  
RPR - Reinstatement of Parental Rights  
RVS - Relative Visitation  
TRU - Truancy  
VYG - Vulnerable Youth Guardianship

### ***Probate and Guardianship Cases (case type 4)***

ABS - Absentee  
AOS - Affidavit of Successor  
ASE - Affidavit of Small Estate  
DSC - Disclaimer  
EST - Estate  
FNW - Foreign Will  
G/E - Guardianship/Estate  
GDE - Guardianship of the Estate  
GDN - Guardianship  
GDP - Guardianship of the Person  
LGD - Limited Guardianship  
LGE - Limited Guardianship of the Estate  
LGP - Limited Guardianship of the Person  
MGD - Minor Guardianship  
MSC - Miscellaneous  
MST - Minor Settlement  
NJB - Non Judicial Binding/TEDRA Agreement  
NNC - Non Probate Notice to Creditor  
POA - Petition for Relief (RCW 11.94) /Power of Attorney  
RGR - Registration of Guardianship  
RTR - Registration of Trust /Trust Situs  
SNT - Special Needs Trust  
TDR - Trust/Estate Dispute Resolution  
TRS - Trust  
WLL - Will Only

### ***Resolution***

A case is resolved if all issues in the complaint are fully adjudicated.

### ***Suspended Case***

A case is placed in suspense status from active status during the reporting period.

### ***Suspense Status***

A case is on suspense status if it is on warrant, appeal, stay, mediation, arbitration (“Deferred Prosecution” is not a suspense status, but is treated as a resolution).