



# King County

Department of Judicial Administration

*Barbara Miner*

*Director and Superior Court Clerk*

(206) 296-9300 (206) 296-0100 TTY/TDD

King County Superior Court

## Civil Department Statistical Report

January 2022

Department of Judicial Administration

Prepared by: Shiquan Liao, Ph.D., Statistician

February 15, 2022

**Report #: CIVIL-2022-01**

*Seattle:*  
516 Third Avenue Room E609  
Seattle, WA 98104-2386

*Regional Justice Center:*  
401 Fourth Avenue North Room 2C  
Kent, WA 98032-4429

*Juvenile Division:*  
1211 East Alder Room 3015  
Seattle, WA 98122-5598

## Civil Statistics Summary

**NOTE: Washington State Supreme Court orders related to the coronavirus pandemic, beginning March 2020, affect the statistics for the foreseeable future.**

The civil statistics report provides an overview of caseload for the civil department. The report includes the number of filings, number of resolutions, number of pending cases, age of resolved cases, and age of pending cases for both SEA and MRJC locations.

The following categories are included in this report: **Civil, Domestic, Probate, Guardianship, Adoption, and Parentage.** This report includes all cases in these categories, regardless of whether or not a judge is assigned at filing.

*Please note that the category of “civil” in the tables of this report is more narrowly defined. Readers are encouraged to check the Appendix at the end of this report for precise definition of the terminology used in this report.*

- **Filings (Table 1, Figures 1)**

In January 2022, the number of filings was 2,483 cases (SEA: 1,578; MRJC: 905). Of those cases filed in January 2022, 36% were MRJC cases, and the remaining 64% were SEA cases. The monthly average filing in 2022 were 2,483 cases in the categories in this report (civil, domestic, probate, guardianship, adoption, and parentage).

- **Resolutions (Table 2, Figures 2)**

The total resolutions in January 2022 were 2,507 cases (SEA: 1,559; MRJC: 948). Of those cases resolved in January 2022, 38% of the resolutions were MRJC cases.

- **Age of Resolved Cases (Table 3)**

Table 3 shows the comparison between the court-adopted timeline standard (as suggested by the State Advisory Committee) with the actual age of resolved cases (time from filing to resolution). Even though the standard is not regularly met, the resolution time does not show any significant change over time.

- **Pending Caseload (Table 4, Figures 3) and Age of Pending Cases (Table 5)**

At the end of January 2022, the pending caseload for the civil department was 12,776 cases (8,138 or 64% were SEA cases and 4,638 or 36% were MRJC cases). The age breakdown of pending cases is presented in Table 5. The pending caseload shows a number of “aged” cases remaining unresolved: SEA has 277 civil cases over 24 months, and 258 domestic cases over 18 months on its pending caseload. The MRJC has 225 general civil cases over 24 months and 248 domestic cases over 18 months on its pending caseload.

**Conclusions: Filings in recent months have been very low due to COVID-19. The resolution pace also reflects the pattern of low filing activities. At the end of January 2022, the total pending caseload in the reporting categories was 12,776 cases. The pending caseload in the same reporting categories was 12,362, 13,567, 13,295, 15,059, 14,371, 14,085, and 12,941 at the year end of 2015, 2016, 2017, 2018, 2019, 2020, and 2021 respectively.**

Figure 1. Monthly Filings for SEA, MRJC and SEA/MRJC Combined

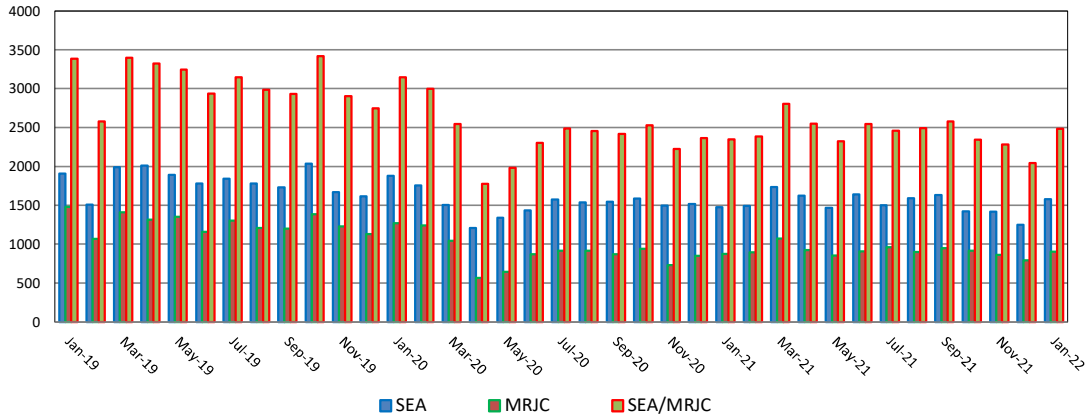


Figure 2. Monthly Resolutions for SEA, MRJC and SEA/MRJC Combined

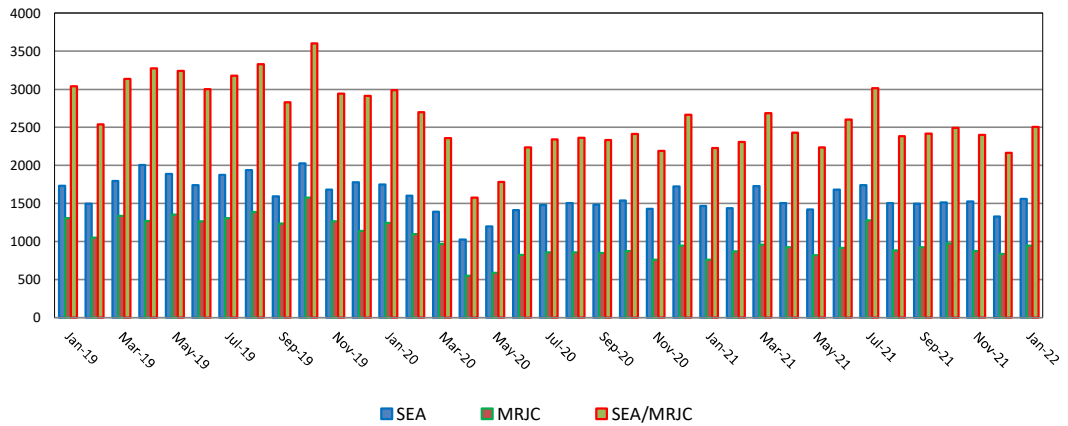


Figure 3. Monthly Pending Caseload for SEA, MRJC and SEA/MRJC Combined

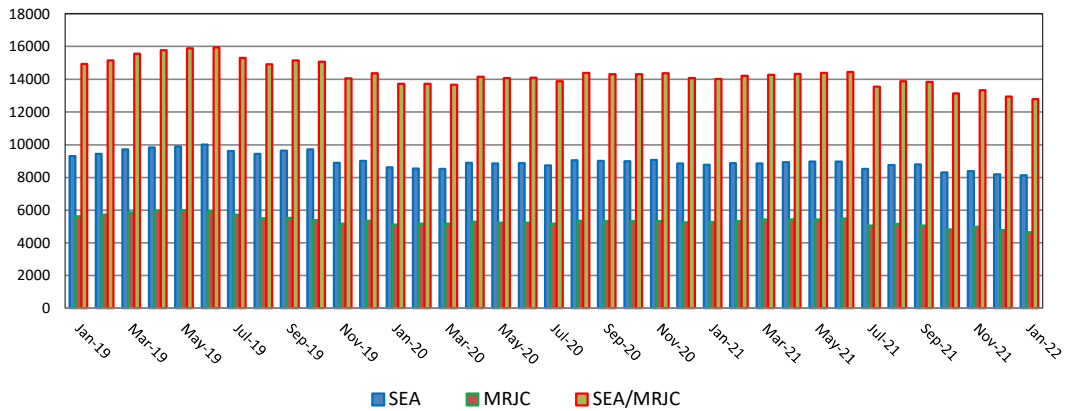


Table 1. Monthly New Filings

SEA	Jan	Feb	Mar	Apr	May	Jun	Jul	Aug	Sep	Oct	Nov	Dec
<b>TOTAL - SEA</b>												
2020	1879	1755	1504	1209	1340	1433	1575	1540	1547	1587	1495	1515
2021	1473	1490	1734	1626	1467	1638	1501	1592	1632	1422	1418	1251
2022	1578											
<b>Civil - SEA</b>												
2020	971	876	840	555	626	657	741	709	714	782	717	697
2021	662	705	761	713	685	699	712	673	717	632	598	577
2022	749											
<b>Domestic - SEA</b>												
2020	385	350	287	211	222	314	351	331	365	325	263	279
2021	276	276	352	338	297	341	300	389	390	268	319	237
2022	298											
<b>Probate - SEA</b>												
2020	441	429	315	382	430	394	419	417	387	383	415	460
2021	442	433	545	486	418	502	421	447	431	435	426	349
2022	489											
<b>Guardianship - SEA</b>												
2020	35	47	33	32	42	33	31	47	40	42	38	36
2021	52	44	36	47	38	46	33	48	52	55	47	60
2022	14											
<b>Adoption - SEA</b>												
2020	33	34	16	19	15	26	19	24	31	42	48	20
2021	25	22	22	25	19	32	24	16	20	21	16	19
2022	16											
<b>Parentage - SEA</b>												
2020	14	19	13	10	5	9	14	12	10	13	14	23
2021	16	10	18	17	10	18	11	19	22	11	12	9
2022	12											

MRJC	Jan	Feb	Mar	Apr	May	Jun	Jul	Aug	Sep	Oct	Nov	Dec
<b>TOTAL - MRJC</b>												
2020	1267	1242	1041	568	642	869	916	915	871	941	731	850
2021	875	893	1072	924	855	907	959	901	948	919	862	793
2022	905											
<b>Civil - MRJC</b>												
2020	839	781	677	317	355	457	494	479	444	515	394	469
2021	473	475	523	451	426	479	492	465	489	463	416	399
2022	493											
<b>Domestic - MRJC</b>												
2020	229	237	194	112	108	212	232	219	230	226	159	186
2021	186	182	255	214	204	194	231	199	211	176	189	161
2022	179											
<b>Probate - MRJC</b>												
2020	155	153	129	121	127	159	144	168	155	157	139	148
2021	167	191	237	207	185	190	193	196	185	197	187	177
2022	192											
<b>Guardianship - MRJC</b>												
2020	19	31	15	12	29	26	18	19	19	19	22	22
2021	20	18	34	23	17	13	21	21	37	52	39	33
2022	15											
<b>Adoption - MRJC</b>												
2020	10	16	10	4	9	1	15	7	5	5	8	9
2021	5	8	7	9	7	10	3	6	7	9	12	4
2022	4											
<b>Parentage - MRJC</b>												
2020	15	24	16	1	14	14	13	23	18	19	9	16
2021	24	19	16	20	16	21	19	4	19	22	19	19
2022	22											

“Civil” includes all civil actions (including RALJ), except “Matters Filed with Clerk” (Petition for Order Granting Judgment on Confession of Judgment, Tax Warrants, Abstract of Judgment, Foreign Judgment, and Transcript of Judgment), Domestic, Probate, Guardianship, Adoption, and Paternity cases.

Table 2. Monthly Resolutions

SEA	Jan	Feb	Mar	Apr	May	Jun	Jul	Aug	Sep	Oct	Nov	Dec
<b>TOTAL - SEA</b>												
2020	1748	1603	1392	1024	1197	1414	1479	1504	1485	1538	1429	1722
2021	1467	1436	1729	1504	1418	1682	1738	1504	1496	1515	1524	1329
2022	1559											
<b>Civil - SEA</b>												
2020	919	849	777	484	513	665	717	749	751	759	667	773
2021	695	624	785	618	672	756	889	721	681	720	730	603
2022	734											
<b>Domestic - SEA</b>												
2020	329	283	256	183	224	310	294	272	285	341	302	410
2021	321	304	356	329	273	337	331	303	332	301	305	313
2022	357											
<b>Probate - SEA</b>												
2020	441	403	289	303	412	390	393	409	377	362	376	449
2021	402	444	507	475	395	507	440	411	406	418	408	329
2022	418											
<b>Guardianship - SEA</b>												
2020	25	34	46	41	27	29	28	39	33	29	36	45
2021	28	24	43	37	42	37	39	36	47	43	52	41
2022	35											
<b>Adoption - SEA</b>												
2020	15	21	15	8	10	18	29	21	21	29	33	36
2021	13	26	25	25	20	25	26	19	17	16	19	27
2022	13											
<b>Parentage - SEA</b>												
2020	19	13	9	5	1	2	18	14	18	18	15	9
2021	8	14	13	20	16	20	13	15	13	17	10	16
2022	12											

MRJC	Jan	Feb	Mar	Apr	May	Jun	Jul	Aug	Sep	Oct	Nov	Dec
<b>TOTAL - MRJC</b>												
2020	1242	1095	968	551	586	823	859	860	848	867	762	944
2021	760	868	957	923	819	918	1275	881	923	976	876	834
2022	948											
<b>Civil - MRJC</b>												
2020	801	677	650	305	325	427	461	499	447	460	390	476
2021	406	468	490	449	397	494	840	471	480	525	495	421
2022	499											
<b>Domestic - MRJC</b>												
2020	248	231	160	104	113	201	215	148	191	240	188	269
2021	194	197	215	232	198	210	221	195	218	202	177	173
2022	222											
<b>Probate - MRJC</b>												
2020	146	136	119	108	132	163	135	160	160	142	135	157
2021	131	160	206	198	176	176	173	182	180	190	153	171
2022	180											
<b>Guardianship - MRJC</b>												
2020	14	20	18	26	9	15	25	28	19	16	22	24
2021	15	15	20	25	26	18	11	10	23	36	26	42
2022	24											
<b>Adoption - MRJC</b>												
2020	12	8	8	7	4	2	14	6	13	2	4	3
2021	3	7	4	5	5	9	7	10	4	7	9	8
2022	5											
<b>Parentage - MRJC</b>												
2020	21	23	13	1	3	15	9	19	18	16	23	15
2021	11	21	22	14	17	11	23	13	18	16	16	19
2022	18											

"Civil" includes all civil actions (including RALJ), except "Matters Filed with Clerk" (Petition for Order Granting Judgment on Confession of Judgment, Tax Warrants, Abstract of Judgment, Foreign Judgment, and Transcript of Judgment), Domestic, Probate, Guardianship, Adoption, and Parentage cases.

Table 3. Percentage of Cases Resolved in Specified Time Intervals

SEA	Jan 2021	Feb 2021	Mar 2021	Apr 2021	May 2021	Jun 2021	Jul 2021	Aug 2021	Sep 2021	Oct 2021	Nov 2021	Dec 2021	Jan 2022
<b>Civil - SEA</b>													
90% in 12 months	77%	80%	80%	80%	73%	83%	75%	82%	82%	81%	76%	86%	81%
98% in 18 months	93%	91%	93%	90%	84%	93%	85%	93%	95%	92%	85%	95%	91%
100% in 24 months	98%	95%	97%	96%	91%	96%	91%	97%	97%	97%	91%	98%	95%
<b>Domestic - SEA</b>													
90% in 8 months	54%	57%	55%	60%	63%	58%	58%	61%	65%	60%	57%	65%	58%
98% in 10 months	64%	65%	66%	71%	73%	70%	70%	71%	71%	69%	66%	76%	67%
100% in 14 months	85%	89%	80%	88%	87%	89%	90%	89%	90%	82%	80%	86%	87%
<b>Probate - SEA</b>													
90% in 8 months	98%	98%	99%	98%	96%	98%	98%	98%	99%	99%	98%	98%	99%
98% in 18 months	100%	99%	99%	99%	97%	98%	98%	99%	100%	100%	100%	100%	100%
100% in 36 months	100%	100%	99%	99%	98%	99%	99%	100%	100%	100%	100%	100%	100%
<b>Guardianship - SEA</b>													
90% in 8 months	96%	96%	100%	97%	93%	97%	97%	94%	87%	91%	96%	98%	94%
98% in 18 months	100%	100%	100%	97%	95%	100%	100%	97%	96%	100%	96%	100%	100%
100% in 36 months	100%	100%	100%	97%	98%	100%	100%	100%	96%	100%	98%	100%	100%
<b>Adoption - SEA</b>													
90% in 8 months	85%	89%	80%	88%	100%	88%	92%	100%	88%	94%	95%	89%	69%
98% in 10 months	92%	92%	92%	88%	100%	92%	96%	100%	88%	94%	95%	93%	77%
100% in 14 months	100%	100%	100%	88%	100%	96%	96%	100%	94%	100%	95%	93%	85%
<b>Parentage - SEA</b>													
90% in 8 months	75%	100%	62%	90%	94%	85%	77%	57%	62%	82%	30%	75%	75%
98% in 10 months	100%	100%	62%	90%	94%	85%	85%	64%	62%	82%	50%	94%	75%
100% in 14 months	100%	100%	92%	90%	100%	90%	100%	86%	77%	94%	50%	94%	75%
<b>MRJC</b>													
<b>Civil - MRJC</b>													
90% in 12 months	86%	87%	90%	90%	89%	92%	70%	87%	79%	89%	81%	90%	85%
98% in 18 months	96%	94%	97%	97%	96%	96%	81%	96%	92%	95%	88%	97%	93%
100% in 24 months	99%	96%	98%	99%	98%	98%	87%	98%	99%	98%	93%	98%	95%
<b>Domestic - MRJC</b>													
90% in 8 months	59%	61%	56%	60%	58%	57%	56%	62%	57%	49%	48%	59%	53%
98% in 10 months	67%	69%	66%	67%	69%	68%	65%	70%	63%	60%	60%	74%	65%
100% in 14 months	89%	82%	81%	79%	80%	86%	82%	91%	86%	75%	73%	89%	84%
<b>Probate - MRJC</b>													
90% in 8 months	99%	98%	100%	98%	98%	98%	99%	98%	98%	99%	98%	99%	98%
98% in 18 months	100%	98%	100%	100%	99%	99%	99%	99%	99%	99%	99%	99%	100%
100% in 36 months	100%	100%	100%	100%	99%	99%	99%	100%	100%	100%	99%	100%	100%
<b>Guardianship - MRJC</b>													
90% in 8 months	73%	93%	67%	100%	100%	94%	100%	90%	91%	100%	92%	95%	88%
98% in 18 months	93%	100%	83%	100%	100%	94%	100%	100%	100%	100%	100%	100%	96%
100% in 36 months	100%	100%	100%	100%	100%	94%	100%	100%	100%	100%	100%	100%	100%
<b>Adoption - MRJC</b>													
90% in 8 months	67%	57%	50%	100%	100%	78%	100%	90%	100%	86%	89%	75%	100%
98% in 10 months	100%	57%	50%	100%	100%	78%	100%	90%	100%	100%	100%	88%	100%
100% in 14 months	100%	57%	75%	100%	100%	89%	100%	90%	100%	100%	100%	88%	100%
<b>Parentage - MRJC</b>													
90% in 8 months	36%	48%	59%	57%	47%	73%	39%	54%	50%	38%	56%	32%	61%
98% in 10 months	46%	67%	68%	71%	65%	91%	57%	77%	67%	56%	63%	63%	83%
100% in 14 months	64%	81%	77%	86%	71%	91%	78%	85%	83%	63%	69%	79%	89%

Age of resolved cases – the time between filing and resolution, minus any suspense time if applicable.

Court adopted time guideline (based on suggestion from BJA State Advisory Committee, see LCR 4 official comment): (a) Civil - 90% by 360 days (12 months), 98% by 540 days (18 months); (b) Domestic - 90% by 240 days (8 months), 98% by 300 days (10 months); (c) Probate/Guardianship - 90% by 240 days (8 months), 98% by 540 days (18 months); (d) Adoption/Parentage - 90% by 240 days (8 months); 98% by 300 days (10 months).

“Civil” includes all civil actions (including RALJ), except “Matters Filed with Clerk” (Petition for Order Granting Judgment on Confession of Judgment, Tax Warrants, Abstract of Judgment, Foreign Judgment, and Transcript of Judgment), Domestic, Probate, Guardianship, Adoption, and Parentage cases.

Table 4. Pending Caseload at the End of the Month

SEA	Jan	Feb	Mar	Apr	May	Jun	Jul	Aug	Sep	Oct	Nov	Dec
<b>TOTAL - SEA</b>												
2020	8611	8550	8504	8879	8853	8873	8735	9036	8999	8996	9053	8845
2021	8759	8876	8860	8916	8968	8976	8503	8747	8775	8312	8379	8179
2022	8138											
<b>Civil - SEA</b>												
2020	5165	5043	5033	5217	5218	5189	5043	5191	5128	5131	5153	5074
2021	4932	5028	4993	5019	5028	4991	4650	4686	4652	4308	4297	4215
2022	4151											
<b>Domestic - SEA</b>												
2020	2580	2596	2571	2694	2647	2669	2657	2789	2816	2778	2755	2612
2021	2584	2590	2583	2581	2612	2634	2518	2674	2695	2579	2642	2527
2022	2494											
<b>Probate - SEA</b>												
2020	485	513	515	566	572	582	622	623	620	639	678	700
2021	742	747	782	807	832	839	837	876	863	854	868	884
2022	960											
<b>Guardianship - SEA</b>												
2020	157	162	146	143	158	163	162	172	175	191	196	184
2021	210	231	221	230	226	236	231	238	285	296	291	291
2022	270											
<b>Adoption - SEA</b>												
2020	140	152	151	164	158	165	152	161	172	180	193	182
2021	193	187	185	185	183	189	179	184	185	187	190	176
2022	177											
<b>Parentage - SEA</b>												
2020	84	84	88	95	100	105	99	100	88	77	78	93
2021	98	93	96	94	87	87	88	89	95	88	91	86
2022	86											

MRJC	Jan	Feb	Mar	Apr	May	Jun	Jul	Aug	Sep	Oct	Nov	Dec
<b>TOTAL - MRJC</b>												
2020	5116	5168	5161	5283	5232	5230	5158	5348	5317	5332	5312	5240
2021	5273	5340	5426	5422	5423	5480	5048	5142	5065	4829	4971	4762
2022	4638											
<b>Civil - MRJC</b>												
2020	2702	2755	2754	2802	2750	2747	2691	2723	2725	2733	2741	2747
2021	2741	2778	2773	2767	2777	2801	2398	2406	2359	2181	2200	2050
2022	2007											
<b>Domestic - MRJC</b>												
2020	1867	1840	1830	1885	1856	1842	1825	1957	1957	1932	1914	1833
2021	1823	1821	1863	1855	1845	1852	1817	1869	1831	1760	1816	1790
2022	1727											
<b>Probate - MRJC</b>												
2020	236	252	263	287	279	287	294	316	303	321	329	323
2021	355	390	419	429	435	452	467	485	422	421	459	455
2022	460											
<b>Guardianship - MRJC</b>												
2020	96	99	94	89	111	122	116	110	106	110	108	106
2021	113	115	130	129	118	114	118	131	206	218	232	214
2022	193											
<b>Adoption - MRJC</b>												
2020	64	68	69	67	71	69	69	72	65	66	71	76
2021	78	80	84	86	88	91	84	82	84	85	88	84
2022	83											
<b>Parentage - MRJC</b>												
2020	151	154	151	153	165	163	163	170	161	160	149	155
2021	163	156	157	156	160	170	164	169	163	164	176	169
2022	168											

SEA/MRJC	Jan	Feb	Mar	Apr	May	Jun	Jul	Aug	Sep	Oct	Nov	Dec
2020	13727	13718	13665	14162	14085	14103	13893	14384	14316	14318	14365	14085
2021	14032	14216	14286	14338	14391	14456	13551	13889	13840	13141	13350	12941
2022	12776											

Pending caseload = cases remain active and unresolved at the end of reporting period, excluding cases on suspense status (in arbitration, appeal).  
 "Civil" includes all civil actions (including RALJ), except "Matters Filed with Clerk" (Petition for Order Granting Judgment on Confession of Judgment, Tax Warrants, Abstract of Judgment, Foreign Judgment, and Transcript of Judgment), Domestic, Probate, Guardianship, Adoption, and Parentage cases.

Table 5. Age of Pending Cases

SEA	Jan 2021	Feb 2021	Mar 2021	Apr 2021	May 2021	Jun 2021	Jul 2021	Aug 2021	Sep 2021	Oct 2021	Nov 2021	Dec 2021	Jan 2022
<b>Civil - SEA</b>													
Median Age (50 <sup>th</sup> percentile) *	196	196	195	198	200	199	192	193	191	188	189	197	182
<b># of Cases in Age Interval</b>													
0 - 120 days (0 - 4 months)	1702	1720	1725	1775	1789	1733	1635	1677	1653	1532	1504	1436	1528
121 - 240 days (5 - 8 months)	1080	1156	1127	1092	1063	1078	1020	1058	1045	1007	1042	1022	977
241 - 360 days (9 - 12 months)	799	741	685	710	731	750	688	670	646	645	647	668	672
361 - 540 days (13 - 18 months)	720	780	762	691	671	633	582	505	490	476	513	487	453
541 - 720 days (19 - 24 months)	361	327	369	411	398	417	403	453	433	292	268	265	244
> 720 days (> 24 months)	270	304	325	340	376	380	322	323	385	356	323	337	277
<b>Domestic - SEA</b>													
Median Age (50 <sup>th</sup> percentile) *	158	158	156	148	144	142	143	142	140	133	139	152	158
<b># of Cases in Age Interval</b>													
0 - 120 days (0 - 4 months)	1033	1020	1085	1158	1167	1196	1108	1210	1235	1190	1212	1027	1008
121 - 240 days (5 - 8 months)	706	737	671	584	569	561	571	634	630	628	631	673	695
241 - 360 days (9 - 12 months)	331	307	334	366	399	393	347	319	330	323	364	387	360
361 - 540 days (13 - 18 months)	244	254	219	191	192	197	188	188	179	175	174	173	173
> 540 days (> 18 months)	270	272	274	282	285	287	304	323	321	263	261	267	258
<b>Probate - SEA</b>													
Median Age (50 <sup>th</sup> percentile) *	256	279	271	271	281	296	314	310	340	362	371	393	367
<b># of Cases in Age Interval</b>													
0 - 120 days (0 - 4 months)	256	229	251	256	256	251	232	244	224	226	230	216	268
121 - 240 days (5 - 8 months)	101	120	119	120	132	124	123	127	117	101	105	109	116
241 - 360 days (9 - 12 months)	67	73	78	85	79	93	98	99	103	98	88	89	92
361 - 540 days (13 - 18 months)	71	66	65	73	82	85	85	99	98	98	99	112	112
> 540 days (> 18 months)	247	259	269	273	283	286	299	307	321	331	346	358	372
<b>Guardianship - SEA</b>													
Median Age (50 <sup>th</sup> percentile) *	173	144	181	183	214	197	243	241	172	181	223	204	254
<b># of Cases in Age Interval</b>													
0 - 120 days (0 - 4 months)	92	111	96	101	92	89	81	86	119	132	111	112	91
121 - 240 days (5 - 8 months)	35	31	30	26	27	35	34	33	44	34	45	43	40
241 - 360 days (9 - 12 months)	24	26	27	29	28	26	23	22	22	28	30	33	33
361 - 540 days (13 - 18 months)	9	12	16	22	28	35	36	36	37	33	28	25	26
> 540 days (> 18 months)	50	51	52	52	51	51	57	61	63	69	77	78	80
<b>Adoption - SEA</b>													
Median Age (50 <sup>th</sup> percentile) *	223	251	265	256	298	283	356	347	359	381	398	451	463
<b># of Cases in Age Interval</b>													
0 - 120 days (0 - 4 months)	78	70	63	61	57	58	47	46	46	41	40	36	39
121 - 240 days (5 - 8 months)	21	23	28	31	28	28	24	28	27	25	27	20	19
241 - 360 days (9 - 12 months)	12	7	7	9	12	16	20	20	20	24	20	19	17
361 - 540 days (13 - 18 months)	17	20	15	11	12	12	11	9	11	16	22	19	19
> 540 days (> 18 months)	65	67	72	73	74	73	77	81	81	81	81	82	83
<b>Parentage - SEA</b>													
Median Age (50 <sup>th</sup> percentile) *	102	123	133	139	174	155	155	139	121	123	119	137	139
<b># of Cases in Age Interval</b>													
0 - 120 days (0 - 4 months)	54	44	45	44	35	40	40	41	47	43	46	42	35
121 - 240 days (5 - 8 months)	17	22	26	22	23	14	11	17	18	21	22	17	25
241 - 360 days (9 - 12 months)	10	7	6	10	9	15	16	8	11	7	5	11	13
361 - 540 days (13 - 18 months)	8	10	8	8	9	7	6	9	6	9	8	6	3
> 540 days (> 18 months)	9	10	11	10	11	11	15	14	13	8	10	10	10

\*Age of active pending cases is time elapsed from filing date to the end of the reporting period, minus any suspense time (in appeal, stay, mediation, arbitration) if applicable. The "median age" indicates the age of half (50%) of the pending cases (half are more, half are less) than the number of days indicated in the table.

"Civil" includes all civil actions (including RALJ), except "Matters Filed with Clerk" (Petition for Order Granting Judgment on Confession of Judgment, Tax Warrants, Abstract of Judgment, Foreign Judgment, and Transcript of Judgment), Domestic, Probate, Guardianship, Adoption, and Paternity cases.



Table 5. Age of Pending Cases (cont.)

MRJC	Jan 2021	Feb 2021	Mar 2021	Apr 2021	May 2021	Jun 2021	Jul 2021	Aug 2021	Sep 2021	Oct 2021	Nov 2021	Dec 2021	Jan 2022
<b>Civil - MRJC</b>													
Median Age (50 <sup>th</sup> percentile) *	206	208	205	206	215	223	199	196	200	189	193	198	189
<b># of Cases in Age Interval</b>													
0 - 120 days (0 - 4 months)	972	959	1001	972	951	904	824	858	836	796	790	728	751
121 - 240 days (5 - 8 months)	555	583	521	527	542	557	533	525	480	467	464	438	412
241 - 360 days (9 - 12 months)	461	417	346	380	363	376	264	296	316	304	326	299	296
361 - 540 days (13 - 18 months)	343	407	481	434	437	442	344	231	200	190	184	186	174
541 - 720 days (19 - 24 months)	229	217	191	194	202	211	200	254	267	202	218	194	149
> 720 days (> 24 months)	181	195	233	260	282	311	233	242	260	222	218	205	225
<b>Domestic- MRJC</b>													
Median Age (50 <sup>th</sup> percentile) *	166	165	167	165	153	154	153	161	161	163	163	170	180
<b># of Cases in Age Interval</b>													
0 - 120 days (0 - 4 months)	688	685	759	781	796	772	753	753	749	725	701	657	623
121 - 240 days (5 - 8 months)	488	485	439	416	390	395	423	462	448	441	485	476	473
241 - 360 days (9 - 12 months)	186	196	215	243	262	272	236	232	220	217	267	285	260
361 - 540 days (13 - 18 months)	212	199	188	150	135	139	124	140	133	122	119	117	123
> 540 days (> 18 months)	249	256	262	265	262	274	281	282	281	181	244	255	248
<b>Probate - MRJC</b>													
Median Age (50 <sup>th</sup> percentile) *	283	237	225	220	231	225	234	233	327	336	314	331	348
<b># of Cases in Age Interval</b>													
0 - 120 days (0 - 4 months)	125	146	159	162	162	163	155	156	113	123	148	129	133
121 - 240 days (5 - 8 months)	42	50	61	59	59	68	82	90	67	47	44	55	50
241 - 360 days (9 - 12 months)	32	30	29	36	36	41	42	41	43	50	54	54	53
361 - 540 days (13 - 18 months)	45	47	47	42	42	38	41	42	40	42	47	45	44
> 540 days (> 18 months)	111	117	123	130	136	142	147	156	159	76	166	172	180
<b>Guardianship - MRJC</b>													
Median Age (50 <sup>th</sup> percentile) *	223	200	141	169	211	243	266	260	146	139	153	170	202
<b># of Cases in Age Interval</b>													
0 - 120 days (0 - 4 months)	52	53	62	54	45	37	37	49	94	95	104	91	67
121 - 240 days (5 - 8 months)	5	6	12	18	17	18	18	13	41	45	43	38	44
241 - 360 days (9 - 12 months)	24	18	13	10	3	6	10	16	18	22	26	26	28
361 - 540 days (13 - 18 months)	8	13	18	22	27	27	24	15	12	12	9	14	13
> 540 days (> 18 months)	24	25	25	25	26	26	29	38	41	33	50	45	41
<b>Adoption - MRJC</b>													
Median Age (50 <sup>th</sup> percentile) *	509	495	490	488	487	492	548	611	609	633	651	701	739
<b># of Cases in Age Interval</b>													
0 - 120 days (0 - 4 months)	19	23	23	19	18	17	12	8	10	12	17	14	12
121 - 240 days (5 - 8 months)	4	4	8	13	16	19	14	13	10	6	4	2	4
241 - 360 days (9 - 12 months)	7	5	3	3	3	4	7	11	14	14	10	8	5
361 - 540 days (13 - 18 months)	12	11	12	10	8	9	8	4	2	4	8	10	12
> 540 days (> 18 months)	36	37	38	41	43	42	43	46	48	14	49	50	50
<b>Parentage - MRJC</b>													
Median Age (50 <sup>th</sup> percentile) *	150	147	149	138	137	150	146	159	154	143	160	162	151
<b># of Cases in Age Interval</b>													
0 - 120 days (0 - 4 months)	63	66	72	74	66	68	68	66	68	65	68	71	73
121 - 240 days (5 - 8 months)	52	47	44	41	47	53	53	55	47	52	51	47	47
241 - 360 days (9 - 12 months)	18	14	12	16	24	24	20	23	25	30	36	31	20
361 - 540 days (13 - 18 months)	24	23	21	16	13	14	11	10	11	11	15	12	20
> 540 days (> 18 months)	6	6	8	9	10	11	12	15	12	17	6	8	8

\*Age of active pending cases is time elapsed from filing date to the end of the reporting period, minus any suspense time (in appeal, stay, mediation, arbitration) if applicable. The "median age" indicates the age of half (50%) of the pending cases (half are more, half are less) than the number of days indicated in the table.

"Civil" includes all civil actions (including RALJ), except "Matters Filed with Clerk" (Petition for Order Granting Judgment on Confession of Judgment, Tax Warrants, Abstract of Judgment, Foreign Judgment, and Transcript of Judgment), Domestic, Probate, Guardianship, Adoption, and Parentage cases.

Table 6. SEA/MRJC Filings, Resolutions, and Pending Caseload as a Percentage of All Cases

	Jan 2021	Feb 2021	Mar 2021	Apr 2021	May 2021	Jun 2021	Jul 2021	Aug 2021	Sep 2021	Oct 2021	Nov 2021	Dec 2021	Jan 2022
<b>Total Filings</b>													
SEA - # of Cases Filed	1473	1490	1734	1626	1467	1638	1501	1592	1632	1422	1418	1251	1578
MRJC - # of Cases Filed	875	893	1072	924	855	907	959	901	948	919	862	793	905
SEA %	63%	63%	62%	64%	63%	64%	61%	64%	63%	61%	62%	61%	64%
MRJC %	37%	37%	38%	36%	37%	36%	39%	36%	37%	39%	38%	39%	36%
<b>Total Resolutions</b>													
SEA - # of Cases Resolved	1467	1436	1729	1504	1418	1682	1738	1504	1496	1515	1524	1329	1559
MRJC - # of Cases Resolved	760	868	957	923	819	918	1275	881	923	976	876	834	948
SEA %	66%	62%	64%	62%	63%	65%	58%	63%	62%	61%	63%	61%	62%
MRJC %	34%	38%	36%	38%	37%	35%	42%	37%	38%	39%	37%	39%	38%
<b>Total Pending Cases</b>													
SEA - # of Cases Pending	8759	8876	8860	8916	8968	8976	8503	8747	8775	8312	8379	8179	8138
MRJC - # of Cases Pending	5273	5340	5426	5422	5423	5480	5048	5142	5065	4829	4971	4762	4638
SEA %	62%	62%	62%	62%	62%	62%	63%	63%	63%	63%	63%	63%	64%
MRJC %	38%	38%	38%	38%	38%	38%	37%	37%	37%	37%	37%	37%	36%

All civil actions (including RALJ), except "Matters Filed with Clerk" (Petition for Order Granting Judgment on Confession of Judgment, Tax Warrants, Abstract of Judgment, Foreign Judgment, and Transcript of Judgment), Domestic, Probate, Guardianship, Adoption, and Parentage cases.

## Appendix Glossary and Definition

### **Active Status**

A case is active if it is not on suspense status (see Suspense Status).

### **Adoption and Parentage Cases (case type 5)**

ADP - Adoption  
CFI - Confidential Intermediary  
CHN - Confidential Change of Name  
DIP - Disestablishment of Parentage  
MDS - Modification/Support Only  
MOD - Modification  
MSC - Miscellaneous  
OAA - Open Adoption Agreement  
PAD - De Facto Parentage  
PAG - Pre Birth Establish Parentage Genetic  
PAS - Establish Parentage Gestational Surrogacy  
PAT - Parentage  
PPR - Initial Pre Placement Report  
PRC - Parentage Rescission/Challenge  
PUR - Parentage (URES/UFSA)  
REL - Relinquishment  
ROB - Relocation Objection  
TER - Termination of Parental Rights

### **Case**

A case is defined as a filing with an assigned case number.

### **Civil Cases (case type 2, no RALJ)**

ALR - Administrative Law Review  
ALRLI - L&I Administrative Law Review  
AOD - Assurance of Discontinuance  
ASB - Asbestos  
ASP - Asbestos Personal Injury  
ASW - Asbestos Wrongful Death  
BAT - Petition to Appeal/Amend Ballot Title  
CAA - Motion to Confirm/Compel Arbitration Award  
CFJ - Petition for Order Granting Judgment on Confession of Judgment  
CHN - Non Confidential Change of Name  
COL - Collection  
COM - Commercial  
CON - Condemnation  
CRP - Certificate of Restoration of Opportunity  
CRR - Petition for Certificate of Rehabilitation  
DOL - Appeal Licensing Revocation  
DSF - Notice of Deposit of Surplus Funds from Trustee's Sale of Real Property  
DVP - Domestic Violence  
ECP - Enforcement of Canadian Protection Order  
EOM - Emancipation of Minor  
FOR - Foreclosure  
FPO - Foreign Protection Order  
FVL - Motion to Show Cause /Frivolous Lien  
HAR - Unlawful Harassment  
HSI - Application for Health & Safety Inspection  
INJ - Injunction  
IPL - Complaint for Interpleader  
LUP - Land Use Petition  
MAL - Other Malpractice  
MED - Medical Malpractice  
MER - Meretricious Relationships  
MHA - Malicious Harassment  
MSC - Miscellaneous  
MST - Minor Settlement  
MWP - Minor Work Permit  
NJF - Non Judicial Filing  
OSS - Petition to Issue Out of State Subpoena  
PBC - Petition for Birth Certificate Change  
PBJ - Petition for Justification /Bail Bond Company  
PCC - Petition for Civil Commitment  
PFA - Property Fairness Act  
PIN - Personal Injury  
PPT - Petition for Perpetuation of Testimony  
PRA - Public Records Act

PRG - Property Damage /Gangs  
PRP - Property Damage  
PVO - Petition for Vehicle Ownership  
QTI - Quiet Title  
RCV - Petition to Appoint Receiver  
RDR - Relief from Duty to Register  
RFR - Restoration of Firearms Rights  
RRC - Remove Restricted Covenant  
SCA - Small Claims Appeal  
SDR - School District /Required Action Plan  
SER - Subdivision Election Process Law Review  
SPC - Seizure of Property From Commission of a Crime  
SPR - Seizure of Property Resulting From a Crime  
STK - Stalking Protection  
SXP - Sexual Assault Protection  
TMV - Tort /Motor Vehicle  
TSS - Petition for Approval of Transfer of Structured Settlement  
TTO - Tort /Other  
UND - Unlawful Detainer  
VAP - Vulnerable Adult Protection Order  
VEP - Voter Election Process Law Review  
VVT - Victims of Motor Vehicle Theft /Civil Action  
WDE - Wrongful Death  
WHC - Writ of Habeas Corpus  
WMW - Miscellaneous Writs  
WRM - Writ of Mandamus  
WRR - Writ of Restitution  
WRV - Writ of Review  
XRP - Extreme Risk Protection Order

### **Completion**

A case is completed if dispositive document is filed with the court following resolution.

### **Domestic Cases (case type 3)**

CIR - Committed Intimate Relationship  
CUS - Child Custody  
DIC - Dissolution w/ Children  
DIN - Dissolution no Children  
DIS - Dissolution  
DPC - Dissolution of Domestic Partnership w/ Children  
DPN - Dissolution of Domestic Partnership /No Children  
FIU - Out of State Support Registration /Foreign Judgment  
INC - Annulment /Inv of Marriage w/ Children  
IND - Annulment /Inv of Domestic Partnership w/ Children  
INP - Invalidity, Domestic Partnership  
INV - Annulment /Invalidity  
MDS - Modification/Support Only  
MOD - Modification  
MSC - Miscellaneous  
MWA - Mandatory Wage Assignment  
OSC - Out of State Custody  
PPS - Parenting Plan / Child Support  
PSO - Petition for Entry of KC Support Order  
RCV - Relative Child Visitation  
RIC - Reciprocal, Resp in County  
ROB - Relocation /Objection  
ROC - Reciprocal, Resp out of County  
RVC - Relative Child Visits  
SDC - Legal Separation, Domestic Partnership w/ Children  
SEC - Legal Separation w/ Children  
SEP - Legal Separation  
SPD - Legal Separation, Domestic Partnership /No Children  
TSS - Structured Settlement  
EFC - Extended Foster Care, Dependency  
GFC - Guardianship Foster Children  
RPR - Reinstatement of Parental Rights  
RVS - Relative Visitation  
TRU - Truancy  
VYG - Vulnerable Youth Guardianship

### ***Probate and Guardianship Cases (case type 4)***

ABS - Absentee  
AOS - Affidavit of Successor  
ASE - Affidavit of Small Estate  
DSC - Disclaimer  
EST - Estate  
FNW - Foreign Will  
G/E - Guardianship/Estate  
GDE - Guardianship of the Estate  
GDN - Guardianship  
GDP - Guardianship of the Person  
LGD - Limited Guardianship  
LGE - Limited Guardianship of the Estate  
LGP - Limited Guardianship of the Person  
MGD - Minor Guardianship  
MSC - Miscellaneous  
MST - Minor Settlement  
NJB - Non Judicial Binding/TEDRA Agreement  
NNC - Non Probate Notice to Creditor  
POA - Petition for Relief (RCW 11.94) /Power of Attorney  
RGR - Registration of Guardianship  
RTR - Registration of Trust /Trust Situs  
SNT - Special Needs Trust  
TDR - Trust/Estate Dispute Resolution  
TRS - Trust  
WLL - Will Only

### ***Resolution***

A case is resolved if all issues in the complaint are fully adjudicated.

### ***Suspended Case***

A case is placed in suspense status from active status during the reporting period.

### ***Suspense Status***

A case is on suspense status if it is on warrant, appeal, stay, mediation, arbitration ("Deferred Prosecution" is not a suspense status, but is treated as a resolution).