



King County

Department of Judicial Administration

Barbara Miner

Director and Superior Court Clerk

(206) 296-9300 (206) 296-0100 TTY/TDD

King County Superior Court

Quarterly Statistical Report

First Quarter 2021

Department of Judicial Administration

Prepared by: Shiquan Liao, Ph.D., Statistician

April 15, 2021

Report #: QTR-2021-01

Seattle:
516 Third Avenue Room E609
Seattle, WA 98104-2386

Regional Justice Center:
401 Fourth Avenue North Room 2C
Kent, WA 98032-4429

Juvenile Division:
1211 East Alder Room 3015
Seattle, WA 98122-5598

Quarterly Report Summary

King County Superior Court

NOTE: Washington State Supreme Court orders related to the coronavirus pandemic, beginning March 2020, affect the statistics for the foreseeable future.

Highlights

- **Criminal Cases** -- The criminal filings in the first quarter of 2021 were lower than that in 2020, with a 26% decrease (-26.4%). The criminal filings (excluding RALJ) in the first quarter of 2021 were 1,198 cases. MRJC accounted for 33% of the total criminal filings in the court. The number of resolutions of criminal cases in the first quarter of 2021 was 1,543 cases, higher than the filing volume in the same time period because of dismissals of a sizeable number of controlled substance cases due to the Blake decision from the Supreme Court. The pending criminal caseload at the end of the first quarter of 2021 was 6,024 cases (excluding RALJ). Of the 6,024 pending criminal cases, 42% were the MRJC cases. **The large pending criminal caseload is primarily due to the COVID-19 pandemic causing the court to suspend trials and to issue many fewer bench warrants, thus keeping these cases in pending active status.**
- **Civil Cases**. Filings in civil cases (case type 2) in the first quarter of 2021 were significantly lower than that in 2020 (-28%) because of COVID19. The civil resolutions were low in the same time period, slightly lower than the filing volume. The pending civil caseload was 7,719 cases at the end of the first quarter of 2021. MRJC had 36% of the civil pending caseload.
- **Domestic Cases**. Domestic case (case type 3) filings in the first quarter of 2021 were also lower than that in the same time period in 2020 (-9%), totaling 1,527 cases for the quarter. The resolutions of domestic cases matched the filing volume in the same time period. The pending domestic caseload was 4,446 cases at the end of the first quarter of 2021, with 42% being the MRJC cases.
- **ITA Cases**. The filings of ITA cases in 2021 continue to increase. A total of 1,313 ITA cases were filed in the first quarter of 2021, up by 13.7% from that in 2020 (+13.7%). The number of ITA cases remaining to be adjudicated at the end of the first quarter of 2021 was 453 cases.
- **Juvenile Dependency/Termination (DEP/TER) and At-risk Youth (ARY)/Child-in-Need of Service (CHINS) Cases**. In the first quarter of 2021, the filing volume in juvenile-related cases showed a decreasing pattern when compared to that in 2020 in most categories: dependency filings down by 16.5% (-16.5%), termination down by 25.8% (-25.8%), no truancy cases were filed. At the end of the first quarter of 2021, there were 382 dependency cases, 354 termination cases, and 156 ARY/CHINS/Other cases pending resolution.
- **Juvenile Offender Cases**. The juvenile offender filings in 2021 were extremely low. In the first quarter, there were only 127 offender cases filed, a 52.6% decrease from the same time period in 2020 (-52.6%). The resolution pace for juvenile offender cases exceeded the filing pace in the same time period. At the end of the first quarter of 2021, there were 572 juvenile offender pending cases.
- **Pro Tem Use**. In the first quarters of 2021, the daily Pro Tem use by the court was 2.2 FTEs, a low volume.
- **Post-resolution Modifications (Table 1-A)**. In the first quarter of 2021, there were 158 post-resolution modifications filed (both parenting plan and relocation modifications).
- **Active re-opened cases and family law modification cases (Table 4-A)**. At the end of first quarter of 2021, there were 297 active re-opened cases and 462 active family law modification cases.

Table 1. Year-to-Date Filing Activity

King County Superior Court

Reporting Category	Year-to-Date (Jan – Mar) and Annual Filing Activity ⁽¹⁾					2020-2021 change (+ means “increase”)		% of 2021 Total Filing ⁽²⁾
	2017	2018	2019	2020	2021	Cases	Percentage	
Total (incl. RALJ)								
Year-to-Date Filing	13209	14094	13218	12475	10397	-2078	-16.7%	
Annual Filing	53115	53835	52889	43103				
Criminal (excl. RALJ)								
Year-to-Date Filing	1606	1505	1362	1628	1198	-430	-26.4%	11.5%
Annual Filing	6441	5989	6607	5877				
Civil (excl. RALJ)								
Year-to-Date Filing	5204	5792	5480	4981	3581	-1400	-28.1%	34.4%
Annual Filing	21517	22217	21202	15352				
Domestic								
Year-to-Date Filing	1850	1944	1697	1682	1527	-155	-9.2%	14.7%
Annual Filing	7597	7640	7280	6163				
Probate								
Year-to-Date Filing	1783	1686	1762	1622	2015	+393	+24.2%	19.4%
Annual Filing	6418	6382	6804	6766				
Guardianship								
Year-to-Date Filing	228	258	200	180	204	+24	+13.3%	2.0%
Annual Filing	949	977	706	725				
Adoption								
Year-to-Date Filing	133	110	97	119	89	-30	-25.2%	0.9%
Annual Filing	546	445	483	431				
Parentage								
Year-to-Date Filing	131	120	125	101	103	+2	+2%	1.0%
Annual Filing	539	512	526	340				
ITA – Civil Commitment								
Year-to-Date Filing	1092	1173	1192	1155	1313	+158	+13.7%	12.6%
Annual Filing	4694	4910	4985	5131				
Juvenile Dependency (DEP)								
Year-to-Date Filing	210	216	199	133	111	-22	-16.5%	1.1%
Annual Filing	793	787	811	435				
Juvenile Termination (TER)								
Year-to-Date Filing	70	85	74	62	46	-16	-25.8%	0.4%
Annual Filing	304	344	225	291				
Juvenile ARY/CHINS/OTHERS								
Year-to-Date Filing	52	72	42	50	60	+10	+20%	0.6%
Annual Filing	245	293	206	187				
Juvenile Truancy								
Year-to-Date Filing	499	767	659	448	0	-448	-100%	0%
Annual Filing	1547	1925	1706	501				
Juvenile Offender								
Year-to-Date Filing	313	322	276	268	127	-141	-52.6%	1.2%
Annual Filing	1324	1229	1121	788				
Criminal RALJ								
Year-to-Date Filing	24	30	42	34	5	-27	-79.4%	0%
Annual Filing	136	117	146	63				
Civil RALJ								
Year-to-Date Filing	14	14	11	12	18	+6	+50%	0.2%
Annual Filing	65	68	81	53				
Matters Filed with Clerk ⁽³⁾								
Year-to-Date Filing	2671	2504	2402	2202	485	-1717	-78%	
Annual Filing	10903	9036	10030	2784				

(1) New filings only (based on filing date).

(2) New filings of each reporting category as percentage of “Year-to-Date Filing”.

(3) “Matters Filed with Clerk” not included in the “Total”.

Chart 1-A. Quarterly Filing Activity
Total Judicial Cases Only ("Matters Filed with Clerk" excluded)

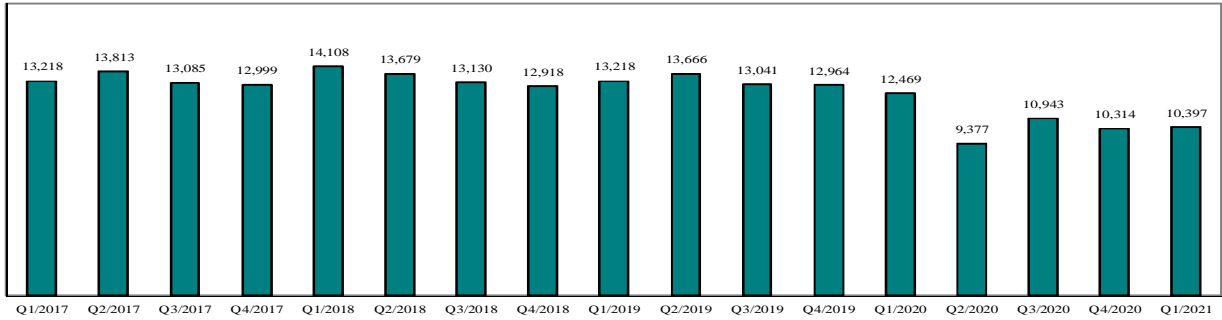


Chart 1-B. Quarterly Filings: Criminal and Juvenile Offender Cases

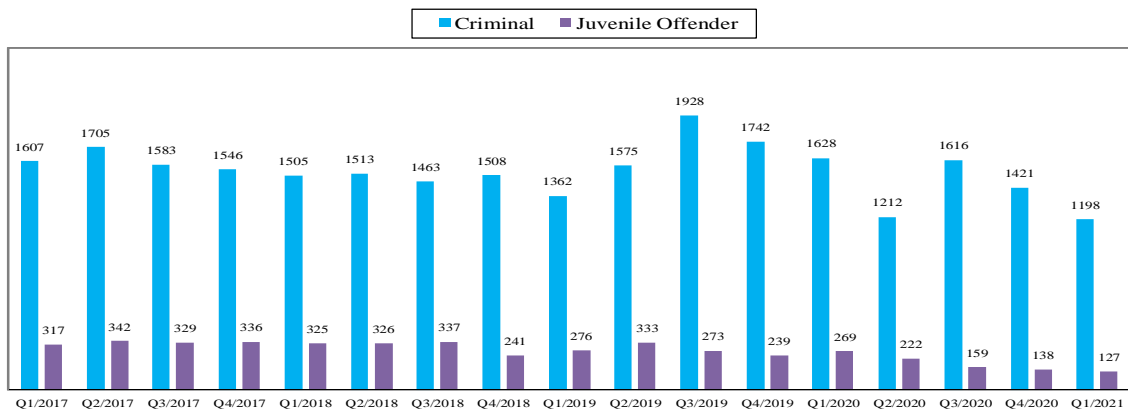
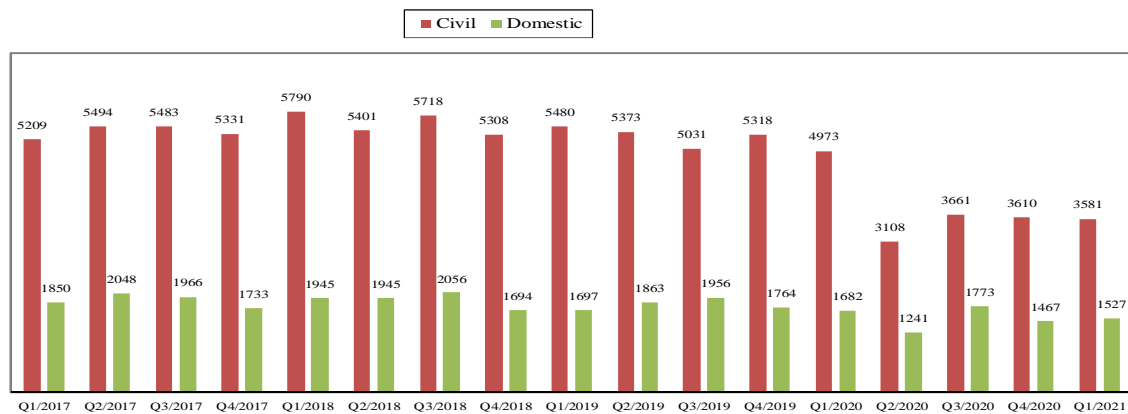


Chart 1-C. Quarterly Filings: Civil and Domestic Cases



* Note: "Civil" is specifically defined in this report. The category of "Civil" does **not** include the following case types: domestic, probate, guardianship, adoption, Parentage, ITA (civil commitment), juvenile cases (dependency, at-risk youth, child-in-need of service), civil RALJ, and tax filings that don't require judicial resources ("matters filed with clerk"). Please check the Appendix for the cause codes in the "General Civil" category.

Table 1-A. Post-Resolution Modifications Filed (Domestic and Parentage Cases)

		2019Q1			2019Q2			2019Q3			2019Q4			Year 2019		
Location	Case Type	DMOD	DTBA	Total	DMOD	DTBA	Total	DMOD	DTBA	Total	DMOD	DTBA	Total	DMOD	DTBA	Total
KNT	Domestic	6	66	72	15	53	68	18	64	82	5	60	65	44	243	287
	Parentage	0	11	11	0	9	9	1	14	15	0	15	15	1	49	50
KNT Total		6	77	83	15	62	77	19	78	97	5	75	80	45	292	337
SEA	Domestic	15	80	95	24	78	102	23	78	101	8	70	78	70	306	376
	Parentage	1	13	14	0	11	11	2	7	9	0	6	6	3	37	40
SEA Total		16	93	109	24	89	113	25	85	110	8	76	84	73	343	416
KNT/SEA Total		22	170	192	39	151	190	44	163	207	13	151	164	118	635	753
		2020Q1			2020Q2			2020Q3			2020Q4			Year 2020		
Location	Case Type	Reloc-ation	Parent Mod	Total	Reloc-ation	Parent Mod	Total	Reloc-ation	Parent Mod	Total	Reloc-ation	Parent Mod	Total	Reloc-ation	Parent Mod	Total
KNT	Domestic	5	59	64	11	39	50	14	42	56	9	50	59	39	190	229
	Parentage	1	11	12	1	2	3	0	11	11	1	2	3	3	26	29
KNT Total		6	70	76	12	41	53	14	53	67	10	52	62	42	216	258
SEA	Domestic	17	69	86	19	42	61	26	55	81	20	52	72	82	218	300
	Parentage	1	7	8	1	2	3	1	3	4	0	2	2	3	14	17
SEA Total		18	76	94	20	44	64	27	58	85	20	54	74	85	232	317
KNT/SEA Total		24	146	170	32	85	117	41	111	152	30	106	136	127	448	575
		2021Q1			2021Q2			2021Q3			2021Q4			Year 2021 (YTD)		
Location	Case Type	Reloc-ation	Parent Mod	Total	Reloc-ation	Parent Mod	Total	Reloc-ation	Parent Mod	Total	Reloc-ation	Parent Mod	Total	Reloc-ation	Parent Mod	Total
KNT	Domestic	12	52	64										12	52	64
	Parentage	1	6	7										1	6	7
KNT Total		13	58	71										13	58	71
SEA	Domestic	19	65	84										19	65	84
	Parentage		3	3											3	3
SEA Total		19	68	87										19	68	87
KNT/SEA Total		32	126	158										32	126	158

1) Prior to 2019, both parenting and support modifications were included; 2) Starting 2019, only parenting modification and relocation are included.

Table 2. Number of Cases Resolved and Resolution Category (%)

King County Superior Court

Reporting Category	Q2/19	Q3/19	Q4/19	Q1/20	Q2/20	Q3/20	Q4/20	Q1/21
Total Resolutions (excl. "Matters Filed with Clerk")	13168	13115	13083	11629	8047	10374	10416	10692
Criminal (excl. RALJ): # Resolved	1439	1519	1457	1427	574	976	1015	1543
Resolved by Jury Trial	3.5%	2.1%	3.6%	2.6%	0.2%	0.6%	1.3%	0.5%
Resolved by Non-Jury Trial	0.5%	0.3%	0.4%	1.0%	1.7%	0.8%	0.6%	0.6%
Resolved by Guilty Plea	78.4%	78.1%	74.0%	72.0%	67.4%	69.5%	72.6%	48.3%
Dismissal	16.7%	19.4%	21.8%	24.2%	30.7%	29.1%	25.4%	48.4%
Others	0.8%	0.2%	0.2%	0.2%	0.0%	0.0%	0.1%	2.3%
Civil: # Resolved	5346	5391	5559	4671	2708	3608	3515	3458
Resolved by Jury Trial	0.5%	0.4%	0.3%	0.2%	0.0%	0.2%	0.2%	0.6%
Resolved by Non-Jury Trial	0.3%	0.5%	0.3%	0.1%	0.1%	0.1%	0.1%	0.5%
Summary Judgment	1.9%	2.2%	1.4%	1.3%	1.0%	1.2%	1.3%	1.6%
Default/ Uncontested	30.4%	29.8%	30.1%	32.3%	39.1%	40.8%	38.2%	37.1%
Arbitration	3.5%	3.3%	3.3%	3.2%	5.4%	6.3%	5.8%	3.8%
Settlement/Dismissal	59.2%	61.7%	60.0%	60.3%	53.3%	49.6%	53.0%	53.8%
Closure by Clerk	3.2%	1.2%	3.7%	1.8%	0.0%	0.6%	0.3%	1.4%
Others	0.9%	0.8%	0.9%	0.8%	1.1%	1.1%	1.1%	1.3%
Domestic: # Resolved	1912	1903	1916	1507	1135	1405	1750	1587
Resolved by Trial	3.2%	2.8%	4.1%	3.1%	1.0%	2.9%	4.1%	4.5%
Default/ Uncontested	8.5%	8.9%	8.4%	9.6%	6.7%	9.0%	8.6%	6.9%
Settlement /Dismissal	87.3%	88.1%	86.3%	86.7%	92.2%	87.9%	86.8%	88.0%
Closure by Clerk	0.4%	0.1%	0.8%	0.3%	0.0%	0.1%	0.1%	0.2%
Others	0.5%	0.1%	0.4%	0.3%	0.2%	0.1%	0.3%	0.4%
Probate: # Resolved	1808	1622	1572	1534	1508	1634	1621	1850
Personal Rep. Appointed	71.8%	68.0%	67.7%	69.0%	73.2%	70.9%	70.8%	73.8%
Dismissal	6.2%	7.0%	7.8%	5.4%	6.2%	6.5%	6.8%	4.9%
Closure by Clerk	0.0%	0.0%	0.0%	0.1%	0.0%	0.0%	0.0%	0.0%
Others	22.0%	25.0%	24.6%	25.5%	20.6%	22.6%	22.5%	21.4%
Guardianship: # Resolved	178	156	157	157	147	172	172	145
Guardian Appointed	87.1%	86.5%	82.2%	80.9%	69.4%	71.5%	83.7%	82.1%
Dismissal	12.4%	11.5%	16.6%	18.5%	28.6%	21.5%	16.3%	16.6%
Closure by Clerk	0.0%	0.0%	0.0%	0.0%	0.0%	4.7%	0.0%	0.0%
Others	0.6%	1.9%	1.3%	0.6%	2.0%	2.3%	0.0%	1.4%
Adoption: # Resolved	131	136	127	79	59	104	107	78
Resolved by Trial	0.8%	0.0%	0.0%	0.0%	0.0%	0.0%	0.0%	1.3%
Uncontested	2.3%	9.6%	3.1%	7.6%	0.0%	3.8%	0.9%	0.0%
Settlement /Dismissal	96.9%	90.4%	96.1%	91.1%	98.3%	96.2%	98.1%	97.4%
Closure by Clerk	0.0%	0.0%	0.8%	0.0%	0.0%	0.0%	0.0%	1.3%
Others	0.0%	0.0%	0.0%	1.3%	1.7%	0.0%	0.9%	0.0%
Parentage: # Resolved	146	129	129	98	27	96	96	89
Resolved by Trial	1.4%	2.3%	0.8%	1.0%	0.0%	0.0%	4.2%	3.4%
Summary Judgment	50.7%	45.0%	44.2%	51.0%	33.3%	58.3%	42.7%	31.5%
Default/ Uncontested	19.2%	18.6%	12.4%	8.2%	3.7%	8.3%	19.8%	20.2%
Settlement/Dismissal	28.8%	34.1%	41.9%	39.8%	63.0%	32.3%	33.3%	44.9%
Closure by Clerk	0.0%	0.0%	0.0%	0.0%	0.0%	0.0%	0.0%	0.0%
Others	0.0%	0.0%	0.8%	0.0%	0.0%	1.0%	0.0%	0.0%
ITA(civil commitment): # Resolved	1259	1275	1175	1123	1116	1395	1206	1178
Court Decision to Commit	52.9%	53.6%	50.2%	47.9%	44.6%	41.9%	35.8%	36.3%
Closed by Court	0.0%	0.0%	0.0%	0.0%	0.0%	0.0%	0.0%	0.0%
Dismissal	12.8%	15.2%	18.6%	14.1%	13.6%	11.0%	10.5%	11.9%
Others	34.3%	31.2%	31.1%	38.0%	41.8%	47.1%	53.6%	51.8%
Juv. Dependency: # Resolved	142	190	155	137	65	152	162	134
Finding of Dependency	85.2%	64.7%	39.4%	48.2%	41.5%	50.0%	69.5%	63.4%
Dismissal	14.8%	34.7%	50.6%	50.4%	58.5%	49.3%	28.7%	35.8%
Others	0.0%	0.5%	0.0%	1.5%	0.0%	0.7%	1.8%	0.7%

Table 2 (cont.). Number of Cases Resolved and Resolution Category (%)

King County Superior Court

Reporting Category	Q2/19	Q3/19	Q4/19	Q1/20	Q2/20	Q3/20	Q4/20	Q1/21
Juv. Terminations: # Resolved	58	34	37	40	15	63	43	56
Finding of Dependency	84.5%	88.2%	64.9%	85.0%	60.0%	81.0%	97.7%	89.3%
Dismissal	15.5%	11.8%	35.1%	15.0%	40.0%	19.0%	2.3%	10.7%
Others	0.0%	0.0%	0.0%	0.0%	0.0%	0.0%	0.0%	0.0%
ARY/CHINS/OTHER: # Resolved	49	50	41	29	14	38	51	75
Approve of Petition	63.2%	42.0%	39.0%	13.7%	28.6%	15.8%	58.7%	78.7%
Dismissal	36.7%	58.0%	61.0%	86.2%	71.4%	68.4%	41.3%	21.3%
Others	0.0%	0.0%	0.0%	0.0%	0.0%	0.0%	0.0%	0.0%
Juvenile Truancy: # Resolved	377	424	445	548	497	424	228	285
Approve of Petition	8.2%	0.2%	0.2%	0.5%	0.2%	0.0%	0.4%	0.0%
Dismissal	91.8%	99.8%	99.8%	99.5%	99.8%	100%	99.6%	100.0%
Others	0.0%	0.0%	0.0%	0.0%	0.0%	0.0%	0.0%	0.0%
Juvenile Offender: # Resolved	278	250	245	232	132	251	191	178
Resolved by Trial (Fact Finding)	0.0%	0.0%	0.0%	2.2%	0.8%	0.4%	0.5%	0.6%
Resolved by Guilty Plea	34.9%	40.8%	39.6%	34.5%	31.3%	24.7%	31.9%	34.8%
Dismissal	41.7%	40.0%	36.9%	43.1%	47.0%	48.6%	48.2%	48.3%
Deferred Disposition (DDSP)	13.7%	14.8%	16.7%	11.2%	15.2%	19.5%	16.2%	12.9%
Others (including Deferred Prosecution)	9.7%	4.4%	4.1%	9.1%	6.1%	6.8%	3.1%	3.4%
Criminal RALJ: # Resolved	32	26	41	22	39	40	26	26
RALJ Decision	75.0%	65.4%	65.9%	86.4%	76.9%	75.0%	84.6	84.6%
Dismissal	18.8%	26.9%	19.5%	13.6%	20.5%	25.0%	11.5	11.5%
Others	6.3%	7.7%	14.6%	0.0%	2.6%	0.0%	3.8	3.8%
Civil RALJ: # Resolved	13	10	27	25	11	16	10	10
RALJ Decision	46.2%	30.0%	37.0%	20.0%	45.5%	50.0%	90.0%	20.0%
Dismissal	53.8%	60.0%	46.1%	28.0%	45.5%	43.8%	0.0%	60.0%
Others	0.0%	10.0%	14.8%	52.0%	9.1%	6.3%	10.0%	20.0%

Chart 2-A. Quarterly Resolutions
Total Judicial Cases Only ("Matters Filed with Clerk" excluded)

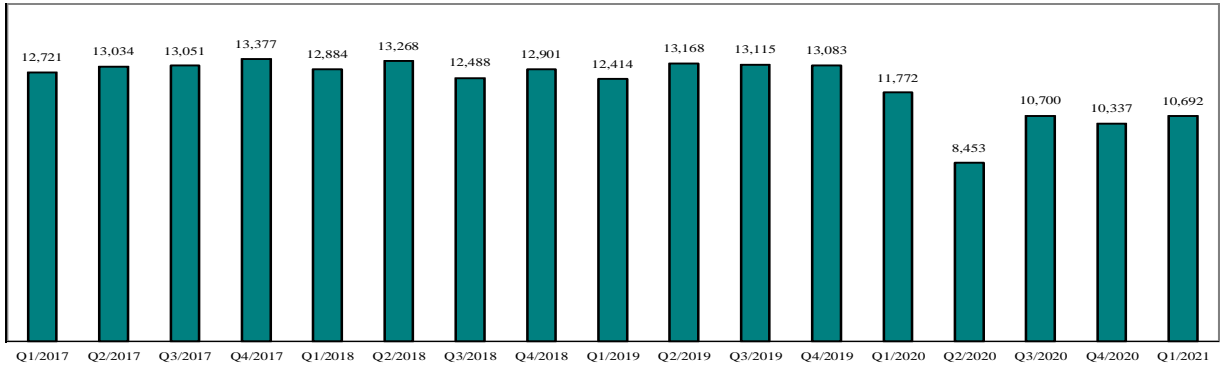


Chart 2-B. Quarterly Resolutions: Criminal and Juvenile Offender Cases

■ Criminal ■ Juvenile Offender

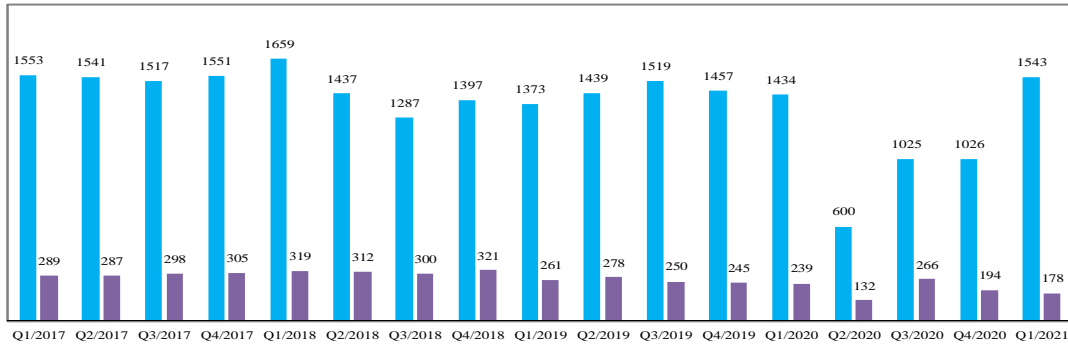
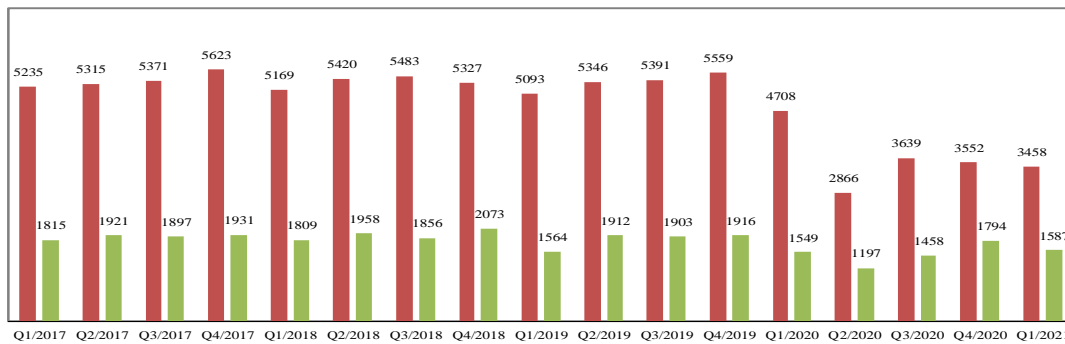


Chart 2-C. Quarterly Resolutions: Civil and Domestic Cases

■ Civil ■ Domestic



Note: "Civil" is specifically defined in this report. The category of "Civil" does **not** include the following case types: domestic, probate, guardianship, adoption, Parentage, mental illness, juvenile cases (dependency, at-risk youth, child-in-need of service), civil RALJ, and tax filings that don't require judicial resources ("matters filed with clerk"). Please check the Appendix for the cause codes in the "General Civil" category.

Table 3. Age of Resolved Cases
King County Superior Court

Reporting Category	Age of Cases at Resolution							
	Q2/19	Q3/19	Q4/19	Q1/20	Q2/20	Q3/20	Q4/20	Q1/21
Criminal (excl. RALJ)								
Age (days)								
50% Cases Resolved by Day	127	109	104	118	112	179	216	222
90% Cases Resolved by Day	454	411	431	435	455	443	470	555
Comparison with Court Standard of								
90% in 4 months	49%	53%	54%	51%	53%	34%	33%	34%
98% in 6 months	61%	66%	68%	66%	67%	51%	44%	43%
100% in 9 months	76%	79%	80%	80%	79%	70%	64%	59%
Civil (excl. RALJ)								
Age (days)								
50% Cases Resolved by Day	58	62	64	42	73	91	88	90
90% Cases Resolved by Day	385	406	399	361	361	386	396	447
Comparison with Court Standard of								
90% in 12 months	88%	86%	86%	90%	90%	87%	85%	83%
98% in 18 months	97%	95%	94%	97%	98%	97%	96%	94%
100% in 24 months	100%	99%	98%	99%	100%	99%	98%	97%
Domestic								
Age (days)								
50% Cases Resolved by Day	190	157	149	153	170	224	213	210
90% Cases Resolved by Day	411	435	400	405	383	442	466	510
Comparison with Court Standard of								
90% in 8 months	62%	67%	71%	66%	64%	53%	53%	56%
98% in 10 months	74%	75%	79%	75%	77%	66%	68%	66%
100% in 14 months	90%	89%	92%	91%	93%	88%	87%	84%
Probate								
Age (days)								
50% Cases Resolved by Day	0	0	0	0	5	4	4	3
90% Cases Resolved by Day	25	30	30	18	30	34	35	27
Comparison with Court Standard of								
90% in 8 months	97%	97%	98%	98%	99%	99%	98%	98%
98% in 18 months	98%	97%	98%	99%	100%	99%	99%	99%
100% in 36 months	98%	97%	98%	99%	100%	100%	100%	100%
Guardianship								
Age (days)								
50% Cases Resolved by Day	54	52	59	52	53	56	52	54
90% Cases Resolved by Day	133	127	163	161	265	458	133	178
Comparison with Court Standard of								
90% in 8 months	96%	98%	93%	96%	90%	81%	97%	92%
98% in 18 months	99%	99%	98%	99%	94%	93%	100%	98%
100% in 36 months	99%	99%	99%	99%	97%	100%	100%	99%
Adoption								
Age (days)								
50% Cases Resolved by Day	30	38	35	36	70	52	40	106
90% Cases Resolved by Day	274	227	156	257	231	230	163	336
Comparison with Court Standard of								
90% in 8 months	87%	92%	95%	89%	93%	91%	94%	80%
98% in 10 months	92%	95%	98%	94%	97%	94%	95%	87%
100% in 14 months	99%	97%	99%	96%	100%	97%	99%	95%
Parentage								
Age (days)								
50% Cases Resolved by Day	164	131	121	152	275	239	246	207
90% Cases Resolved by Day	315	297	316	354	515	362	455	484
Comparison with Court Standard of								
90% in 8 months	74%	79%	83%	76%	41%	50%	50%	62%
98% in 10 months	88%	90%	89%	87%	67%	81%	75%	72%
100% in 14 months	96%	93%	97%	95%	85%	95%	89%	84%

Table 3 (cont.) Age of Resolved Cases

King County Superior Court

Reporting Category	Age of Cases at Resolution							
	Q2/19	Q3/19	Q4/19	Q1/20	Q2/20	Q3/20	Q4/20	Q1/21
ITA (civil commitment) *								
Age (days)								
50% Cases Resolved by Day	6	6	7	9	10	12	13	13
90% Cases Resolved by Day	24	22	27	32	30	53	48	42
Juvenile Dependency (DEP)								
Age (days)								
50% Cases Resolved by Day	105	116	211	198	190	203	245	150
90% Cases Resolved by Day	217	292	1056	618	517	455	636	573
Comparison with Court Standard of								
90% in 8 months	91%	86%	54%	66%	55%	61%	49%	65%
98% in 10 months	93%	90%	62%	78%	71%	73%	61%	70%
100% in 14 months	94%	94%	73%	86%	77%	85%	75%	81%
Juvenile Termination (TER)								
Age (days)								
50% Cases Resolved by Day	171	171	190	83	390	209	126	253
90% Cases Resolved by Day	329	377	375	523	675	560	307	514
Comparison with Court Standard of								
90% in 8 months	72%	74%	63%	80%	27%	60%	61%	48%
98% in 10 months	90%	80%	71%	80%	40%	71%	88%	66%
100% in 14 months	95%	95%	98%	83%	67%	84%	93%	77%
Juv ARY/CHINS/OTHER								
Age (days)								
50% Cases Resolved by Day	30	41	50	66	89	222	36	28
90% Cases Resolved by Day	226	230	238	251	224	362	339	231
Comparison with Court Standard of								
90% in 8 months	96%	92%	91%	86%	93%	66%	80%	91%
98% in 10 months	98%	96%	93%	100%	93%	76%	87%	95%
100% in 14 months	100%	98%	95%	100%	93%	97%	91%	96%
Juvenile Truancy*								
Age (days)								
50% Cases Resolved by Day	378	468	327	406	489	521	383	411
90% Cases Resolved by Day	623	616	700	1112	919	826	601	643
Juvenile Offender								
Age (days)								
50% Cases Resolved by Day	116	140	140	133	147	204	230	233
90% Cases Resolved by Day	345	307	385	331	330	461	489	510
Comparison with Court Standard of								
90% in 4 months	52%	43%	47%	47%	45%	24%	18%	25%
98% in 6 months	68%	66%	65%	54%	59%	39%	40%	39%
100% in 9 months	84%	84%	84%	82%	76%	68%	59%	62%
Criminal RALJ								
Age (days)								
50% Cases Resolved by Day	233	216	302	331	314	280	316	415
90% Cases Resolved by Day	493	500	716	490	632	486	703	708
Civil RALJ								
Age (days)								
50% Cases Resolved by Day	166	167	171	108	182	189	264	162
90% Cases Resolved by Day	259	210	324	323	250	301	359	214

* No standard yet.

Table 4. Active Pending Caseload Statistics
King County Superior Court

Reporting Category		Q2/19	Q3/19	Q4/19	Q1/20	Q2/20	Q3/20	Q4/20	Q1/21
Total (incl. RALJ)									
Previous Pending	(+)	12414	13168	13115	22146	22746	23139	23149	22977
New Filing	(+)	13666	13041	12964	12475	8942	10656	10156	10397
Resolved	(-)	13168	13115	13083	11629	8047	10374	10193	10692
End Pending		23711	22909	22146	22748	23139	23149	22977	22831
Resolution Rate*		0.964	1.006	1.009	0.932	0.900	0.974	1.004	1.028
Criminal (excl. RALJ)									
Previous Pending	(+)	3176	3420	3579	3564	4188	5113	5659	6083
New Filing	(+)	1575	1928	1742	1628	1149	1579	1400	1198
Resolved	(-)	1439	1519	1457	1427	574	976	1015	1543
End Pending		3420	3579	3564	4188	5113	5659	6083	6024
Resolution Rate*		0.914	0.788	0.836	0.877	0.500	0.618	0.725	1.288
Civil (excl. RALJ)									
Previous Pending	(+)	8813	9135	8152	8576	8515	7900	7821	7778
New Filing	(+)	5373	5031	5318	4981	2959	3571	3551	3581
Resolved	(-)	5346	5391	5559	4671	2708	3608	3515	3458
End Pending		9135	8152	8576	8515	7900	7821	7778	7719
Resolution Rate*		0.995	1.072	1.045	0.938	0.915	1.010	0.990	0.966
Domestic									
Previous Pending	(+)	4529	4478	4516	4384	4431	4511	4773	4445
New Filing	(+)	1863	1956	1764	1682	1179	1728	1438	1527
Resolved	(-)	1912	1903	1916	1507	1135	1405	1750	1587
End Pending		4478	4516	4384	4431	4511	4773	4445	4446
Resolution Rate*		1.026	0.973	1.086	0.896	0.963	0.813	1.217	1.039
Probate									
Previous Pending	(+)	1235	1476	1545	690	778	869	923	1023
New Filing	(+)	1820	1621	1601	1622	1613	1690	1702	2015
Resolved	(-)	1808	1622	1572	1534	1508	1634	1621	1850
End Pending		1476	1545	690	778	869	923	1023	1201
Resolution Rate*		0.993	1.001	0.982	0.946	0.935	0.967	0.952	0.918
Guardianship									
Previous Pending	(+)	509	377	429	235	240	285	281	290
New Filing	(+)	170	189	147	180	175	174	179	204
Resolved	(-)	178	156	157	157	147	172	172	145
End Pending		377	429	235	240	285	281	290	351
Resolution Rate*		1.047	0.825	1.068	0.872	0.840	0.989	0.961	0.711
Adoption									
Previous Pending	(+)	197	205	196	184	220	234	237	258
New Filing	(+)	139	133	114	119	74	101	132	89
Resolved	(-)	131	136	127	79	59	104	107	78
End Pending		205	196	184	220	234	237	258	269
Resolution Rate*		0.942	1.023	1.114	0.664	0.797	1.030	0.811	0.876
Parentage									
Previous Pending	(+)	246	242	253	251	239	268	249	248
New Filing	(+)	140	137	124	101	53	90	94	103
Resolved	(-)	146	129	129	98	27	96	96	89
End Pending		242	253	251	239	268	249	248	253
Resolution Rate*		1.043	0.942	1.040	0.970	0.509	1.067	1.021	0.864
ITA (civil commitment)									
Previous Pending	(+)	206	201	246	288	263	433	315	321
New Filing	(+)	1254	1320	1219	1155	1267	1369	1225	1313
Resolved	(-)	1259	1275	1175	1123	1116	1395	1206	1178
End Pending		201	246	288	263	433	315	321	453
Resolution Rate*		1.004	0.966	0.964	0.972	0.881	1.019	0.984	0.897

* A value of "Resolution Rate" less than one indicates the resolution pace is slower than the filing pace.

Table 4 (cont.) Active Pending Caseload Statistics
King County Superior Court

Reporting Category	Q2/19	Q3/19	Q4/19	Q1/20	Q2/20	Q3/20	Q4/20	Q1/21
Juvenile Dependency (DEP)								
Previous Pending (+)	428	590	587	647	638	692	635	467
New Filing (+)	227	193	192	133	112	99	117	111
Resolved (-)	142	190	155	137	65	152	162	134
End Pending	590	587	647	638	692	635	467	382
Resolution Rate*	0.626	0.984	0.807	1.030	0.580	1.535	1.347	1.207
Juvenile Termination (TER)								
Previous Pending (+)	260	241	248	277	297	332	341	382
New Filing (+)	39	45	67	62	64	68	93	46
Resolved (-)	58	34	37	40	15	63	43	56
End Pending	241	248	277	297	332	341	382	354
Resolution Rate*	1.487	0.756	0.552	0.645	0.234	0.926	0.462	1.217
Juv ARY/CHINS/OTHERS								
Previous Pending (+)	152	86	97	100	119	128	115	169
New Filing (+)	63	57	44	50	22	22	46	60
Resolved (-)	49	50	41	29	14	38	51	75
End Pending	86	97	100	119	128	115	169	156
Resolution Rate*	0.778	0.877	0.932	0.580	0.636	1.727	1.179	1.250
Juvenile Truancy								
Previous Pending (+)	2313	2556	2244	2112	1976	1484	1042	832
New Filing (+)	620	109	318	448	45	0	8	0
Resolved (-)	377	424	445	548	497	424	228	285
End Pending	2556	2244	2112	1976	1484	1042	832	558
Resolution Rate*	0.608	3.890	1.399	1.223	11.044	NA	28.500	---
Juvenile Offender								
Previous Pending (+)	479	539	614	647	659	758	649	572
New Filing (+)	333	273	239	268	216	147	136	127
Resolved (-)	278	250	245	232	132	251	191	178
End Pending	539	614	647	659	758	649	572	572
Resolution Rate*	0.835	0.916	1.025	0.866	0.611	1.707	1.404	1.402
Criminal RALJ								
Previous Pending (+)	133	129	136	140	147	96	77	66
New Filing (+)	27	33	44	34	6	8	12	5
Resolved (-)	32	26	41	22	39	40	26	26
End Pending	129	136	140	147	96	77	66	46
Resolution Rate*	1.185	0.788	0.932	0.647	6.560	5.000	2.167	5.200
Civil RALJ								
Previous Pending (+)	34	36	47	51	38	36	32	43
New Filing (+)	23	16	31	12	8	10	23	18
Resolved (-)	13	10	27	25	11	16	10	10
End Pending	36	47	51	38	36	32	43	47
Resolution Rate*	0.565	0.625	0.871	2.083	1.375	1.600	0.435	0.556

* A value of "Resolution Rate" less than one indicates the resolution pace is slower than the filing pace.

Table 4-A. Active Re-opened Cases and Modification Cases

Reporting Category	Q2/19	Q3/19	Q4/19	Q1/20	Q2/20	Q3/20	Q4/20	Q1/21
<i>Re-opened without disposition</i>								297
<i>Modification without disposition</i>								462

Chart 4-A. Pending Caseload at Quarter End:
Total Judicial Cases Only ("Matters Filed with Clerk" excluded)

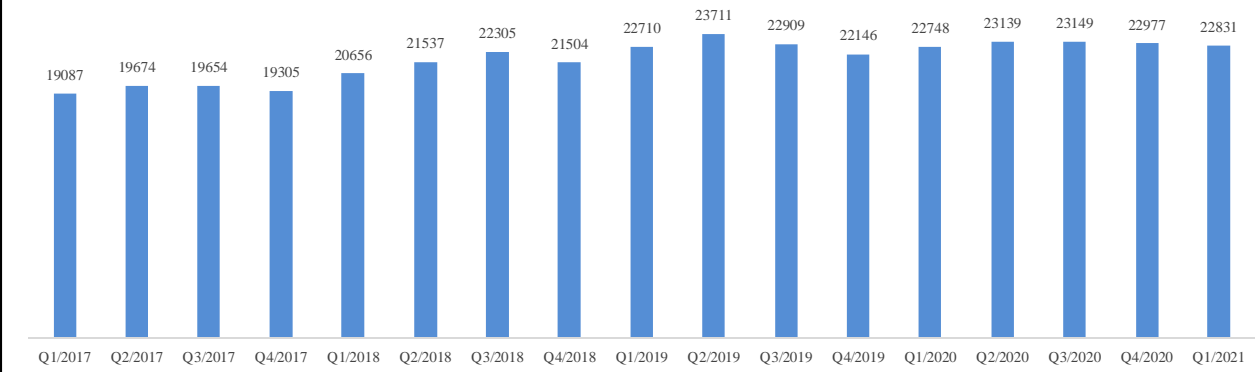


Chart 4-B. Pending Caseload at Quarter End: Criminal, Domestic, and Civil Cases

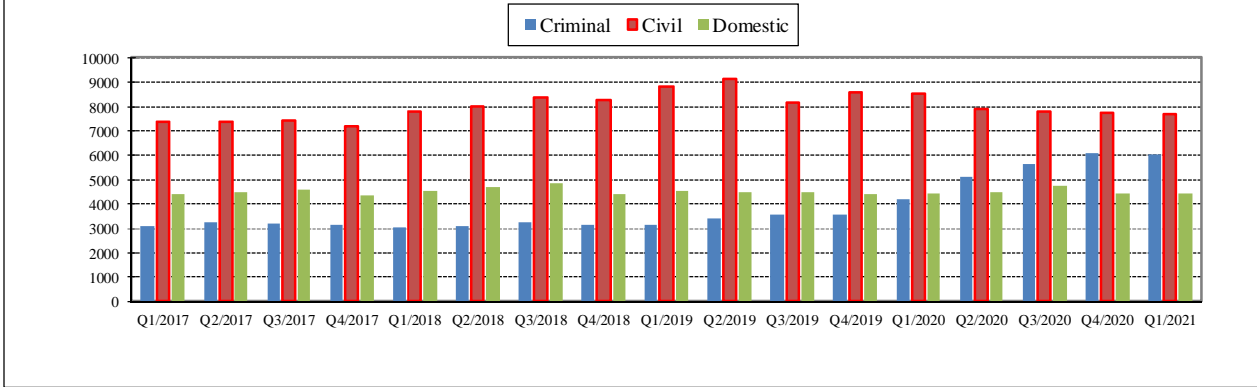
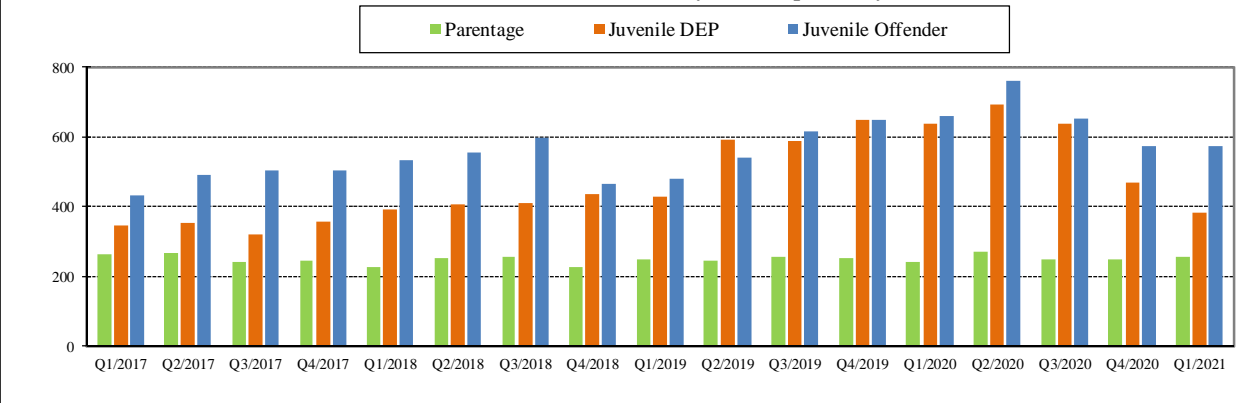


Chart 4-C. Pending Caseload at Quarter End:
Juvenile Offender, Paternity, and Dependency Cases



Note: "Civil" is specifically defined in this report. The category of "Civil" does **not** include the following case types: domestic, probate, guardianship, adoption, Parentage, mental illness, juvenile cases (dependency, at-risk youth, child-in-need of service), civil RALJ, and tax filings that don't require judicial resources ("matters filed with clerk"). Please check the Appendix for the cause codes in the "General Civil" category.

Table 5. Age of Pending Cases

King County Superior Court

Reporting Category	Age of Pending Cases and # of Cases in Each Age Interval							
	Q2/19	Q3/19	Q4/19	Q1/20	Q2/20	Q3/20	Q4/20	Q1/21
Criminal (excl. RALJ): # of Cases	3420	3579	3564	4148	5113	5969	6083	6024
Age (days)								
Median (50 percentile)	107	95	105	92	137	178	200	232
90 percentile	418	433	430	365	412	442	486	541
# of Cases in Age Interval								
0 - 60 days (0 - 2 months)	1232	1330	1169	1710	1188	1179	1159	1045
61 - 120 days (3 - 4 months)	592	724	789	747	1039	916	767	767
121 - 180 days (5 - 6 months)	440	390	473	513	856	741	928	624
181 - 270 days (7 - 9 months)	409	409	414	525	840	1214	937	1065
> 270 days (> 9 months)	747	726	719	693	1190	1609	2292	2523
Civil (excl. RALJ): # of Cases	9135	8152	8576	8515	7900	7821	7778	7719
Age (days)								
Median (50 percentile)	137	158	146	153	179	205	203	198
90 percentile	433	418	399	420	484	539	597	646
# of Cases in Age Interval								
0 - 120 days (0 - 4 months)	4078	3314	3808	3483	2714	2652	2689	2704
121 - 240 days (5 - 8 months)	2328	2292	2172	2357	2198	1902	1628	1637
241 - 360 days (9 - 12 months)	1436	1430	1464	1388	1359	1523	1408	1029
361 - 540 days (13 - 18 months)	830	656	771	891	1067	966	1052	1236
541 - 720 days (19 - 24 months)	303	307	202	228	365	508	597	557
> 720 days (> 24 months)	160	173	160	168	197	270	404	556
Domestic: # of Cases	4478	4516	4384	4431	4511	4773	4445	4446
Age (days)								
Median (50 percentile)	118	117	131	144	172	155	155	161
90 percentile	474	460	477	468	511	525	584	605
# of Cases in Age Interval								
0 - 120 days (0 - 4 months)	2252	2303	2087	1990	1581	2124	1817	1844
121 - 240 days (5 - 8 months)	969	1082	1105	1213	1283	984	1091	1110
241 - 360 days (9 - 12 months)	569	476	569	593	784	749	600	549
361 - 540 days (13 - 18 months)	319	289	243	258	448	462	431	407
> 540 days (> 18 months)	369	366	380	377	415	454	506	536
Probate: # of Cases	1476	1545	690	778	869	923	1023	1201
Age (days)								
Median (50 percentile)	517	570	347	298	230	296	295	255
90 percentile	1612	1672	1640	1623	1574	1631	1618	1574
# of Cases in Age Interval								
0 - 120 days (0 - 4 months)	288	247	220	257	311	295	322	410
121 - 240 days (5 - 8 months)	160	173	83	109	132	119	146	180
241 - 360 days (9 - 12 months)	131	164	50	58	69	105	97	107
361 - 540 days (13 - 18 months)	196	162	65	63	68	91	107	112
> 540 days (> 18 months)	701	799	272	291	289	313	351	392
Guardianship: # of Cases	377	429	235	240	285	281	290	351
Age (days)								
Median (50 percentile)	177	241	133	139	125	136	207	155
90 percentile	741	797	881	976	1028	1121	1211	1227
# of Cases in Age Interval								
0 - 120 days (0 - 4 months)	125	155	115	115	139	55	116	158
121 - 240 days (5 - 8 months)	117	57	24	32	39	15	45	42
241 - 360 days (9 - 12 months)	32	98	25	8	19	10	48	40
361 - 540 days (13 - 18 months)	27	33	19	28	19	70	8	34
> 540 days (> 18 months)	76	86	52	57	15	55	73	77

Table 5 (cont.). Age of Pending Cases

King County Superior Court

Reporting Category	Age of Pending Cases and # of Cases in Each Age Interval							
	Q2/19	Q3/19	Q4/19	Q1/20	Q2/20	Q3/20	Q4/20	Q1/21
Adoption: # of Cases	205	196	184	220	234	237	258	269
Age (days)								
Median (50 percentile)	159	198	291	225	274	344	339	380
90 percentile	691	795	887	966	1051	1144	1226	1315
# of Cases in Age Interval								
0 - 120 days (0 - 4 months)	87	76	53	81	64	73	89	86
121 - 240 days (5 - 8 months)	41	32	30	31	42	29	21	36
241 - 360 days (9 - 12 months)	21	30	22	18	27	20	25	10
361 - 540 days (13 - 18 months)	13	17	30	37	25	27	26	27
> 540 days (> 18 months)	43	41	49	53	29	88	97	110
Parentage: # of Cases	242	253	251	239	268	249	248	253
Age (days)								
Median (50 percentile)	83	94	105	126	171	182	133	146
90 percentile	270	270	300	335	383	433	476	497
# of Cases in Age Interval								
0 - 120 days (0 - 4 months)	156	158	137	117	80	100	108	117
121 - 240 days (5 - 8 months)	57	58	69	75	112	64	57	70
241 - 360 days (9 - 12 months)	11	22	25	29	43	45	34	18
361 - 540 days (13 - 18 months)	13	9	10	12	23	28	32	29
> 540 days (> 18 months)	5	6	10	6	5	12	17	19
ITA (civil commitment): # of Cases	201	246	288	263	433	315	321	453
Age (days)								
Median (50 percentile)	18	14	20	56	53	28	39	36
90 percentile	307	371	420	511	540	206	274	227
# of Cases in Age Interval								
0 - 120 days (0 - 4 months)	149	188	219	179	295	265	258	328
121 - 240 days (5 - 8 months)	24	10	14	27	63	23	27	85
> 240 days (> 8 months)	28	48	55	57	58	27	36	40
Juv Dependency (DEP): # of Cases	590	587	647	638	692	635	467	382
Age (days)								
Median (50 percentile)	150	194	195	242	284	349	372	292
90 percentile	631	713	784	847	916	1009	955	668
# of Cases in Age Interval								
0 - 60 days (0 - 2 months)	139	112	121	84	64	64	72	65
61 - 120 days (3 - 4 months)	106	118	95	88	84	65	47	54
121 - 180 days (5 - 6 months)	76	48	82	86	67	46	32	34
181 - 270 days (7 - 9 months)	75	81	99	88	126	59	47	32
> 270 days (> 9 months)	194	228	250	292	351	401	269	197
Juv Termination (TER): # of Cases	241	248	277	297	332	341	382	354
Age (days)								
Median (50 percentile)	269	329	340	389	320	349	326	355
90 percentile	646	738	809	879	935	1018	1050	1140
# of Cases in Age Interval								
0 - 60 days (0 - 2 months)	28	31	46	38	23	46	70	26
61 - 120 days (3 - 4 months)	23	18	30	32	49	26	31	49
121 - 180 days (5 - 6 months)	33	19	21	27	49	42	34	37
181 - 270 days (7 - 9 months)	38	37	15	30	30	39	42	39
> 270 days (> 9 months)	119	143	165	170	181	188	205	203
ARY/CHINS/OTHER: # of Cases	86	97	100	119	128	115	169	156
Age (days)								
Median (50 percentile)	174	132	188	188	240	314	658	805
90 percentile	646	719	811	900	903	996	1178	1268
# of Cases in Age Interval								
0 - 60 days (0 - 2 months)	33	28	20	27	16	15	16	13
61 - 120 days (3 - 4 months)	6	19	16	18	13	12	15	8
121 - 180 days (5 - 6 months)	5	7	11	13	25	6	8	9
181 - 270 days (7 - 9 months)	6	5	13	12	14	24	7	7
> 270 days (> 9 months)	36	38	40	49	60	58	120	119

Table 5 (cont.). Age of Pending Cases

King County Superior Court

Reporting Category	Age of Pending Cases and # of Cases in Each Age Interval							
	Q2/19	Q3/19	Q4/19	Q1/20	Q2/20	Q3/20	Q4/20	Q1/21
Juvenile Truancy: # of Cases	2556	2244	2112	1976	1484	1042	832	558
Age (days)								
Median (50 percentile)	194	251	300	315	321	300	359	470
90 percentile	613	706	769	718	747	575	675	804
# of Cases in Age Interval								
0 - 60 days (0 - 2 months)	419	63	240	290	26	.0	0	0
61 - 120 days (3 - 4 months)	428	248	70	259	108	20	0	0
121 - 180 days (5 - 6 months)	360	342	92	154	332	18	0	0
181 - 270 days (7 - 9 months)	367	585	425	88	250	414	35	0
> 270 days (> 9 months)	982	1006	1285	1185	768	590	797	558
Juvenile Offender: # of Cases	539	614	647	659	758	649	572	572
Age (days)								
Median (50 percentile)	101	110	144	145	167	211	241	226
90 percentile	355	405	459	475	477	567	665	748
# of Cases in Age Interval								
0 - 60 days (0 - 2 months)	163	173	164	154	143	110	96	99
61 - 120 days (3 - 4 months)	138	151	124	148	138	98	66	94
121 - 180 days (5 - 6 months)	75	108	104	75	129	88	55	45
181 - 270 days (7 - 9 months)	55	71	124	106	107	108	108	77
> 270 days (> 9 months)	108	111	131	176	241	245	247	257
Criminal RALJ: # of Cases	129	136	140	147	96	77	66	46
Age (days)								
Median (50 percentile)	178	212	174	179	209	304	363	426
90 percentile	683	706	609	643	432	1204	1750	1980
# of Cases in Age Interval								
0 - 60 days (0 - 2 months)	17	25	30	24	10	6	6	3
61 - 120 days (3 - 4 months)	21	14	28	30	22	5	11	6
121 - 180 days (5 - 6 months)	29	17	15	20	32	2	3	4
181 - 270 days (7 - 9 months)	21	29	16	24	29	18	3	6
> 270 days (> 9 months)	41	51	51	49	10	46	43	27
Civil RALJ: # of Cases	36	47	51	38	36	32	43	47
Age (days)								
Median (50 percentile)	118	108	61	115	183	221	122	122
90 percentile	355	298	239	288	341	434	459	549
# of Cases in Age Interval								
0 - 60 days (0 - 2 months)	8	10	25	9	0	5	12	14
61 - 120 days (3 - 4 months)	10	14	10	14	10	5	9	8
121 - 180 days (5 - 6 months)	8	11	7	6	7	3	9	11
181 - 270 days (7 - 9 months)	6	4	5	5	13	6	0	2
> 270 days (> 9 months)	4	8	4	4	6	13	13	12

Table 6. Seattle vs. Regional Justice Center (KNT): Filing, Resolution, Pending Caseload (%)

King County Superior Court

	Q1/20		Q2/20		Q3/20		Q4/20		Q1/21	
	SEA	KNT	SEA	KNT	SEA	KNT	SEA	KNT	SEA	KNT
Filings Total <i>(excl. filings with clerk)</i>	63%	37%	71%	29%	68%	32%	67%	33%	67%	33%
Criminal (excl. RALJ)	61%	39%	60%	40%	56%	44%	51%	49%	56%	44%
Civil (excl. RALJ)	54%	46%	62%	38%	60%	40%	61%	39%	59%	41%
Domestic	61%	39%	63%	37%	61%	39%	60%	40%	59%	41%
Probate	73%	27%	75%	25%	72%	28%	74%	26%	71%	30%
Guardianship	64%	36%	61%	39%	68%	32%	65%	35%	65%	35%
Adoption	70%	30%	81%	19%	73%	27%	83%	17%	78%	23%
Parentage	46%	55%	45%	55%	40%	60%	53%	47%	43%	57%
ITA (civil commitment)	100%	0%	100%	0%	100%	0%	100%	0%	100%	0%
Juv. Dependency (DEP)	62%	38%	80%	20%	76%	24%	68%	32%	60%	41%
Juv. Termination (TER)	63%	37%	63%	37%	49%	52%	34%	66%	46%	54%
Juvenile ARY/CHINS/Other	50%	50%	41%	59%	55%	46%	49%	51%	53%	47%
Juvenile Truancy	32%	68%	82%	18%	NA	NA	0%	100%	---	---
Juvenile Offender	100%	0%	100%	0%	100%	0%	100%	0%	100%	0%
Criminal RALJ	82%	18%	67%	33%	75%	25%	92%	8%	100%	0%
Civil RALJ	92%	8%	88%	12%	80%	20%	74%	26%	78%	22%
Resolution Total <i>(excl. filings with clerk)</i>	62%	38%	70%	30%	68%	32%	69%	31%	67%	33%
Criminal (excl. RALJ)	58%	42%	59%	41%	59%	41%	63%	37%	62%	38%
Civil (excl. RALJ)	54%	46%	61%	39%	61%	39%	62%	38%	61%	39%
Domestic	58%	42%	63%	37%	61%	39%	60%	40%	62%	38%
Probate	74%	26%	73%	27%	72%	28%	73%	27%	73%	27%
Guardianship	67%	33%	66%	34%	58%	42%	64%	36%	66%	35%
Adoption	65%	35%	78%	22%	68%	32%	92%	8%	82%	18%
Parentage	42%	58%	30%	70%	52%	48%	44%	56%	39%	61%
ITA (civil commitment)	100%	0%	100%	0%	100%	0%	100%	0%	100%	---
Juv. Dependency (DEP)	69%	31%	65%	35%	62%	38%	58%	42%	73%	27%
Juv. Termination (TER)	58%	43%	87%	13%	62%	38%	54%	47%	55%	45%
Juvenile ARY/CHINS/Other	66%	35%	36%	64%	40%	61%	41%	59%	65%	35%
Juvenile Truancy	51%	49%	62%	38%	40%	60%	52%	---	21%	79%
Juvenile Offender	100%	0%	100%	0%	100%	0%	100%	0%	100%	---
Criminal RALJ	82%	18%	77%	23%	93%	8%	89%	12%	92%	8%
Civil RALJ	84%	16%	91%	9%	88%	13%	90%	10%	70%	30%
Pending Total <i>(excl. filings with clerk)</i>	63%	37%	64%	36%	63%	37%	63%	37%	63%	37%
Criminal (excl. RALJ)	62%	38%	62%	38%	61%	39%	59%	41%	58%	42%
Civil (excl. RALJ)	64%	36%	65%	35%	65%	35%	65%	35%	64%	36%
Domestic	59%	41%	59%	41%	59%	41%	59%	41%	58%	42%
Probate	66%	34%	67%	33%	67%	33%	68%	32%	65%	35%
Guardianship	61%	39%	57%	43%	62%	38%	63%	37%	63%	37%
Adoption	69%	31%	71%	30%	73%	27%	71%	30%	69%	31%
Parentage	37%	63%	39%	61%	35%	65%	38%	63%	38%	62%
ITA (civil commitment)	100%	0%	100%	0%	100%	0%	100%	0%	100%	---
Juv. Dependency (DEP)	59%	41%	61%	39%	63%	37%	64%	36%	64%	36%
Juv. Termination (TER)	65%	35%	66%	34%	63%	37%	57%	43%	57%	43%
Juvenile ARY/CHINS/Other	46%	54%	48%	52%	50%	50%	58%	42%	52%	48%
Juvenile Truancy	50%	50%	47%	53%	49%	51%	48%	52%	63%	37%
Juvenile Offender	100%	0%	100%	0%	100%	0%	100%	0%	100%	---
Criminal RALJ	88%	12%	92%	8%	90%	10%	91%	9%	91%	9%
Civil RALJ	84%	16%	83%	17%	78%	22%	74%	26%	79%	21%

Table 7. Quarterly Utilization of Pro Tem Judges/Commissioners ⁽¹⁾

Category	Q4/18	Q1/19	Q2/19	Q3/19	Q4/19	Q1/20	Q2/20	Q3/20	Q4/20	Q1/21
Grand Total	1850	1084	2814	1454	2023	1125	346	1045	2316	985
FTE Equivalent ⁽²⁾	4.1	2.4	6.3	3.2	4.5	2.5	0.8	2.3	5.1	2.2
By Work Type										
Pro Tem Judge	274	179	498	248	503	148	71	138	305	44
Pro Tem Commissioner	1576	905	2316	1206	1520	978	284	907	2011	941
By Location										
KCCH	981	434	1602	632	919	378	197	580	1355	535
MRJC	403	235	579	411	466	331	35	225	543	228
Juvenile	292	323	462	335	456	284	48	184	277	205
ITA	37	93	171	75	182	132	75	56	142	17
Other	136	0	0	0	0	0	0	0	0	0
By Calendar Type										
Criminal	145	10	133	54	145	42	24	63	70	25
Civil	0	0	0	0	0	0	0	0	1	0
Ex Parte	411	200	432	322	476	143	21	144	371	118
Family Law/Domestic	782	429	1377	588	661	482	167	550	1267	620
Dependency	216	184	336	210	196	222	22	158	231	185
Juvenile Offender	57	124	81	95	230	58	27	26	42	20
BECCA	19	16	45	30	30	5	0	0	4	0
ITA	136	93	171	75	182	132	75	56	142	17
Juvenile Drug Court	0	0	0	0	0	0	0	0	0	0
Family Treatment Court	0	0	0	0	0	0	0	0	0	0
Plea Calendar	35	26	205	63	81	43	21	49	182	0
Status/Non-Compliance	0	0	0	0	5	0	0	0	0	0
Other or Unspecified	48	3	34	17	18	0	0	0	7	0
By Reason										
Vacation Backfill	233	121	390	187	345	85	190	96	1072	29
Medical Backfill	1431	835	2144	1151	1475	926	46	852	392	941
Duty Time	15	42	63	32	127	62	69	42	317	15
Conference Coverage	134	86	217	84	76	53	0	83	0	0
Congestion	0	0	0	0	0	0	36	0	429	0
Vacancy Coverage	0	0	0	0	0	0	14	0	63	0
Other	37	0	0	0	0	0	0	0	44	0

(1) This table is based on the time sheet for compensation

(2) Judge FTE Equivalent = # of hours / [7.5 hours/day * 20 days/month * 3 months] = # of hours/450.

Data for the most current quarter are incomplete at reporting time and will be updated in next quarterly report.

The Pro Tem hours are provided quarterly by the Administrative Services Department of King County Superior Court.

Table 8. Ex Parte and Family Law Hearings and Documents Signed

Ex Parte: Hearings Held and Documents Signed								
	2020Q2		2020Q3		2020Q4		2021Q1	
	Hearings	Documents Signed	Hearings	Documents Signed	Hearings	Documents Signed	Hearings	Documents Signed
KNT (EXP04/05)								
Civil	65	312	100	466	120	547	138	443
Domestic	21	370	40	487	55	640	41	458
Probate/Guardianship	192	64	302	236	305	227	226	202
Adoption/Paternity	6	8	26	59	13	47	23	47
Ex Parte Judge Panel (EXP08)								714
Ex Parte Via Clerk (EXP06)		3678		3224		3985		2941
KNT Subtotal	284	4432	468	4472	493	5446	428	4805
SEA (EXP01/02)								
Civil	118	703	122	732	186	700	218	771
Domestic	41	441	81	577	93	578	56	528
Probate/Guardianship	415	629	625	690	683	755	577	577
Adoption/Paternity	27	47	54	96	81	185	74	166
Ex Parte Judge Panel (EXP08)								1655
Ex Parte Via Clerk (EXP07)		6358		7476		9015		6160
SEA Total	601	8178	882	9571	1043	11233	925	9857
KNT/SEA Total	885	12610	1350	14043	1536	16679	1353	14662
FAMILY LAW: Hearings Held and Documents Signed								
	2020Q2		2020Q3		2020Q4		2021Q1	
	Hearings	Documents Signed	Hearings	Documents Signed	Hearings	Documents Signed	Hearings	Documents Signed
KNT (FAM02)								
Civil	268	605	817	766	917	1057	900	1038
Domestic	40	401	242	680	331	889	311	960
Adoption/Paternity	8	142	73	219	95	342	85	388
KNT Subtotal	316	1148	1132	1665	1343	2288	1296	2386
SEA (FAM01)								
Civil	455	613	394	986	699	846	634	761
Domestic	49	386	159	689	372	1058	428	1182
Adoption/Paternity	2	158	19	265	19	271	32	316
SEA Total	506	1157	572	1940	1090	2175	1094	2259
KNT/SEA Total	822	2305	1704	3605	2433	4463	2390	4645

Appendix Glossary and Definition

Active Status

A case is active if it is not on suspense status (see Suspense Status).

Adoption and Parentage Cases (case type 5)

ADP - Adoption
CFI - Confidential Intermediary
CHN - Confidential Change of Name
DIP - Disestablishment of Parentage
MDS - Modification/Support Only
MOD - Modification
MSC - Miscellaneous
OAA - Open Adoption Agreement
PAD - De Facto Parentage
PAG - Pre Birth Establish Parentage Genetic
PAS - Establish Parentage Gestational Surrogacy
PAT - Parentage
PPR - Initial Pre Placement Report
PRC - Parentage Rescission/Challenge
PUR - Parentage (URES/UFSA)
REL - Relinquishment
ROB - Relocation Objection
TER - Termination of Parental Rights

Case

A case is defined as a filing with an assigned case number.

Civil Cases (case type 2, no RALJ)

ALR - Administrative Law Review
ALRLI - L&I Administrative Law Review
AOD - Assurance of Discontinuance
ASB - Asbestos
ASP - Asbestos Personal Injury
ASW - Asbestos Wrongful Death
BAT - Petition to Appeal/Amend Ballot Title
CAA - Motion to Confirm/Compel Arbitration Award
CHN - Non Confidential Change of Name
COL - Collection
COM - Commercial
CON - Condemnation
CRP - Certificate of Restoration of Opportunity
CRR - Petition for Certificate of Rehabilitation
DOL - Appeal Licensing Revocation
DSF - Notice of Deposit of Surplus Funds from Trustee's Sale of Real Property
DVP - Domestic Violence
ECP - Enforcement of Canadian Protection Order
EOM - Emancipation of Minor
FOR - Foreclosure
FPO - Foreign Protection Order
FVL - Motion to Show Cause /Fruivolous Lien
HAR - Unlawful Harassment
HSI - Application for Health & Safety Inspection
INJ - Injunction
IPL - Complaint for Interpleader
LUP - Land Use Petition
MAL - Other Malpractice
MED - Medical Malpractice
MER - Meretricious Relationships
MHA - Malicious Harassment
MSC - Miscellaneous
MST - Minor Settlement
MWP - Minor Work Permit
NJF - Non Judicial Filing
OSS - Petition to Issue Out of State Subpoena
PBC - Petition for Birth Certificate Change
PBJ - Petition for Justification /Bail Bond Company
PCC - Petition for Civil Commitment

PFA - Property Fairness Act
PIN - Personal Injury
PPT - Petition for Perpetuation of Testimony
PRA - Public Records Act
PRG - Property Damage /Gangs
PRP - Property Damage
PVO - Petition for Vehicle Ownership
QTI - Quiet Title
RCV - Petition to Appoint Receiver
RDR - Relief from Duty to Register
RFR - Restoration of Firearms Rights
RRC - Remove Restricted Covenant
SCA - Small Claims Appeal
SDR - School District /Required Action Plan
SER - Subdivision Election Process Law Review
SPC - Seizure of Property From Commission of a Crime
SPR - Seizure of Property Resulting From a Crime
STK - Stalking Protection
SXP - Sexual Assault Protection
TMV - Tort /Motor Vehicle
TSS - Petition for Approval of Transfer of Structured Settlement
TTO - Tort /Other
UND - Unlawful Detainer
VAP - Vulnerable Adult Protection Order
VEP - Voter Election Process Law Review
VVT - Victims of Motor Vehicle Theft /Civil Action
WDE - Wrongful Death
WHC - Writ of Habeas Corpus
WMW - Miscellaneous Writs
WRM - Writ of Mandamus
WRR - Writ of Restitution
WRV - Writ of Review
XRP - Extreme Risk Protection Order

Civil Matters Filed with Clerk (case type 2)

ABJ - Abstract of Judgment
FJU - Foreign Judgment
TAX - Tax Warrants
TRJ - Transcript of Judgment
CFJ - Petition for Order Granting Judgment on Confession of Judgment

Civil RALJ Cases (case type 2)

LCA - Lower Court Appeal /Civil
LCI - Lower Court Appeal /Infractions

Completion

A case is completed if dispositive document is filed with the court following resolution.

Criminal Cases (case type 1, no RALJ)

Adult criminal cases, excluding appeals from courts of limited jurisdiction. This reporting category includes the following crime categories within SCOMIS case type 1:

Homicide
Sex Crime
Robbery
Assault
Theft/Burglary
Motor Vehicle Theft
Controlled Substance
Others

Criminal RALJ Cases (case type 1)

CRJ - Criminal RALJ

Domestic Cases (case type 3)

CIR - Committed Intimate Relationship
CUS - Child Custody
DIC - Dissolution w/ Children
DIN - Dissolution no Children
DIS - Dissolution
DPC - Dissolution of Domestic Partnership w/ Children
DPN - Dissolution of Domestic Partnership /No Children
FJU - Out of State Support Registration /Foreign Judgment
INC - Annulment /Inv of Marriage w/ Children
IND - Annulment /Inv of Domestic Partnership w/ Children
INP - Invalidity, Domestic Partnership
INV - Annulment /Invalidity
MDS - Modification/Support Only
MOD - Modification
MSC - Miscellaneous
MWA - Mandatory Wage Assignment
OSC - Out of State Custody
PPS - Parenting Plan / Child Support
PSO - Petition for Entry of KC Support Order
RCV - Relative Child Visitation
RIC - Reciprocal, Resp in County
ROB - Relocation /Objection
ROC - Reciprocal, Resp out of County
RVC - Relative Child Visits
SDC - Legal Separation, Domestic Partnership w/ Children
SEC - Legal Separation w/ Children
SEP - Legal Separation
SPD - Legal Separation, Domestic Partnership /No Children
TSS - Structured Settlement

Jury Trial

A hearing is reported as a jury trial if the jury is impaneled.

Juvenile BECCA Cases (case type 7)

ARY - At Risk Youth
CNS - Child In Need Of Services
DDP - Developmental Disability
DGN - Dependency Guardianship
EFC - Extended Foster Care, Dependency
GFC - Guardianship Foster Children
RPR - Reinstatement of Parental Rights
RVS - Relative Visitation
TRU - Truancy
VYG - Vulnerable Youth Guardianship

Juvenile Dependency Cases (case type 7)

DEP - Dependency
TER - Termination of Parental Rights

Juvenile Offender Cases (case type 8)

Homicide
Sex Crime
Robbery
Assault
Theft/Burglary
Motor Vehicle Theft
Controlled Substance
Others

Involuntary Treatment Act Cases (case type 6)

Alcoholic Treatment (ALT)
ITA - Adult (MI)
ITA - Family (MIF)
ITA - Juvenile (MIJ)

Non-Jury Trial

A hearing is reported as a non-jury trial if an opening statement is made, waived, or reserved.

Pending Case

A case is defined as pending if it is unresolved and active (not in suspense).

Post-disposition Modifications

Petition to modify parenting plan after the resolution of the original case, based on the modification schedule.

Probate and Guardianship Cases (case type 5)

ABS - Absentee
AOS - Affidavit of Successor
ASE - Affidavit of Small Estate
DSC - Disclaimer
EST - Estate
FNW - Foreign Will
G/E - Guardianship/Estate
GDE - Guardianship of the Estate
GDN - Guardianship
GDP - Guardianship of the Person
LGD - Limited Guardianship
LGE - Limited Guardianship of the Estate
LGP - Limited Guardianship of the Person
MGD - Minor Guardianship
MSC - Miscellaneous
MST - Minor Settlement
NJB - Non Judicial Binding/TEDRA Agreement
NNC - Non Probate Notice to Creditor
POA - Petition for Relief (RCW 11.94) /Power of Attorney
RGR - Registration of Guardianship
RTR - Registration of Trust /Trust Situs
SNT - Special Needs Trust
TDR - Trust/Estate Dispute Resolution
TRS - Trust
WLL - Will Only

Resolution

A case is resolved if all issues in the complaint are fully adjudicated.

Suspended Case

A case is placed in suspense status from active status during the reporting period.

Suspense Status

A case is on suspense status if it is on warrant, appeal, stay, mediation, arbitration ("Deferred Prosecution" is not a suspense status, but is treated as a resolution).

Trial

A hearing set before a judge or jury in which all the issues in the case are meant to be resolved. A trial normally includes opening statements to the court or jury stating what evidence will show, introduction of witnesses and exhibits for direct and cross examination, final arguments to the court or jury in which counsel argue both the evidence and the law, and judgment by the court or jury stating what the facts of the case are and what law applies to the facts. In a jury case, it also includes the selection of the jury. A trial can be held for one or more cases. A single trial may be held to adjudicate more than one case (as defined above).