



King County

Department of Judicial Administration

Barbara Miner

Director and Superior Court Clerk

(206) 296-9300 (206) 296-0100 TTY/TDD

King County Superior Court

Civil Department Statistical Report

September 2021

Department of Judicial Administration

Prepared by: Shiquan Liao, Ph.D., Statistician

October 15, 2021

Report #: CIVIL-2021-09

Seattle:
516 Third Avenue Room E609
Seattle, WA 98104-2386

Regional Justice Center:
401 Fourth Avenue North Room 2C
Kent, WA 98032-4429

Juvenile Division:
1211 East Alder Room 3015
Seattle, WA 98122-5598

Civil Statistics Summary

NOTE: Washington State Supreme Court orders related to the coronavirus pandemic, beginning March 2020, affect the statistics for the foreseeable future.

The civil statistics report provides an overview of caseload for the civil department. The report includes the number of filings, number of resolutions, number of pending cases, age of resolved cases, and age of pending cases for both SEA and MRJC locations.

*The following categories are included in this report: **Civil, Domestic, Probate, Guardianship, Adoption, and Parentage**. This report includes all cases in these categories, regardless of whether or not a judge is assigned at filing.*

Please note that the category of “civil” in the tables of this report is more narrowly defined. Readers are encouraged to check the Appendix at the end of this report for precise definition of the terminology used in this report.

- **Filings (Table 1, Figures 1)**

In September 2021, the number of filings was 2,580 cases (SEA: 1,632; MRJC: 948). Of those cases filed in September 2021, 37% were MRJC cases, and the remaining 63% were SEA cases.

- **Resolutions (Table 2, Figures 2)**

The total resolutions in September 2021 were 2,419 cases (SEA: 1,496; MRJC: 923). Of those cases resolved in September 2021, 38% of the resolutions were MRJC cases.

- **Age of Resolved Cases (Table 3)**

Table 3 shows the comparison between the court-adopted timeline standard (as suggested by the State Advisory Committee) with the actual age of resolved cases (time from filing to resolution). Even though the standard is not regularly met, the resolution time does not show any significant change over time.

- **Pending Caseload (Table 4, Figures 3) and Age of Pending Cases (Table 5)**

At the end of September 2021, the pending caseload for the civil department was 13,840 cases (8,775 or 63% were SEA cases and 5,065 or 37% were MRJC cases). The age breakdown of pending cases is presented in Table 5. The pending caseload shows a number of “aged” cases remaining unresolved: SEA has 385 civil cases over 24 months, and 321 domestic cases over 18 months on its pending caseload. The MRJC has 260 general civil cases over 24 months and 281 domestic cases over 18 months on its pending caseload.

Conclusions: Filings in recent months have been very low due to COVID-19. Resolution pace also reflects the pattern of low filing activities. At the end of September 2021, the total pending caseload in the reporting categories was 13,840 cases. The pending caseload in the same reporting categories was 12,362, 13,567, 13,295, 15,059, 14,371, and 14,085 at the year end of 2015, 2016, 2017, 2018, 2019, and 2020 respectively.

Figure 1. Monthly Filings for SEA, MRJC and SEA/MRJC Combined

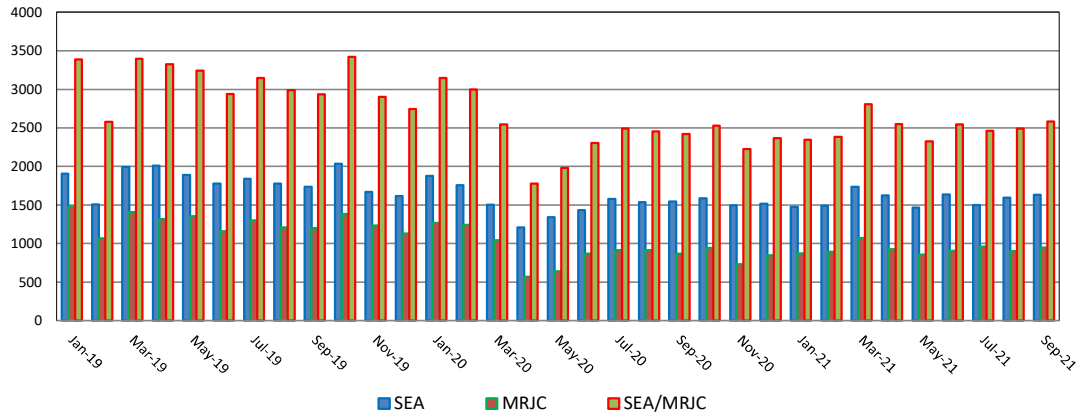


Figure 2. Monthly Resolutions for SEA, MRJC and SEA/MRJC Combined

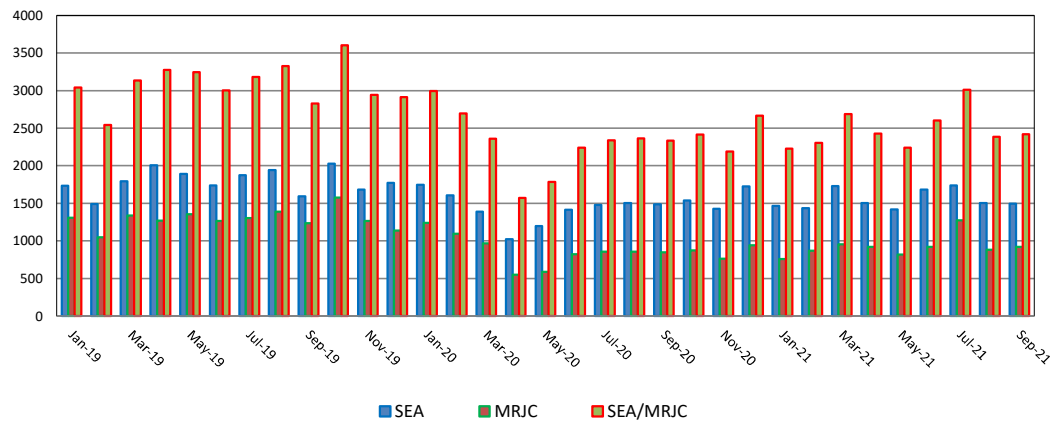


Figure 3. Monthly Pending Caseload for SEA, MRJC and SEA/MRJC Combined

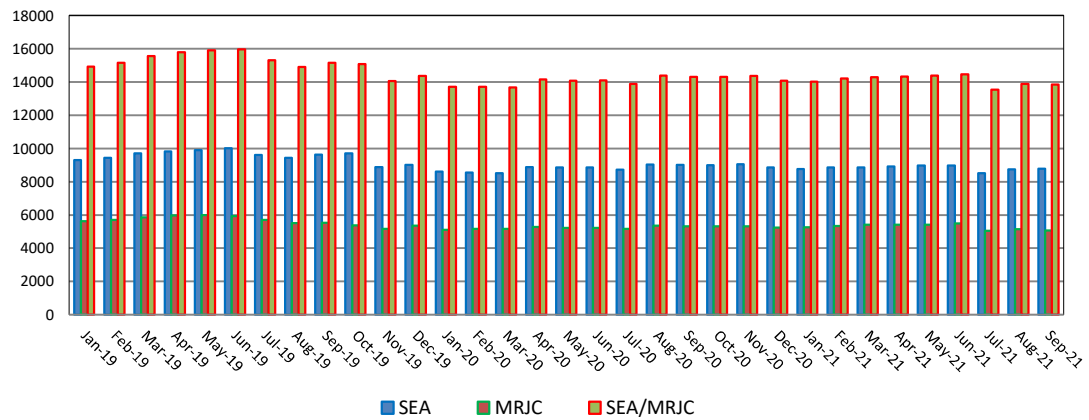


Table 1. Monthly New Filings

SEA	Jan	Feb	Mar	Apr	May	Jun	Jul	Aug	Sep	Oct	Nov	Dec
TOTAL - SEA												
2019	1905	1508	1990	2010	1890	1778	1842	1778	1733	2035	1670	1616
2020	1879	1755	1504	1209	1340	1433	1575	1540	1547	1587	1495	1515
2021	1473	1490	1734	1626	1467	1638	1501	1592	1632			
Civil - SEA												
2019	1009	799	1070	1026	1018	954	947	873	972	1160	897	893
2020	971	876	840	555	626	657	741	709	714	782	717	697
2021	662	705	761	713	685	699	712	673	717			
Domestic - SEA												
2019	372	257	379	401	343	334	375	420	357	393	336	273
2020	385	350	287	211	222	314	351	331	365	325	263	279
2021	276	276	352	338	297	341	300	389	390			
Probate - SEA												
2019	423	382	465	488	446	411	416	389	327	403	348	390
2020	441	429	315	382	430	394	419	417	387	383	415	460
2021	442	433	545	486	418	502	421	447	431			
Guardianship - SEA												
2019	52	41	39	37	26	35	48	41	32	27	44	28
2020	35	47	33	32	42	33	31	47	40	42	38	36
2021	52	44	36	47	38	46	33	48	52			
Adoption - SEA												
2019	22	19	17	39	27	25	35	37	24	32	25	21
2020	33	34	16	19	15	26	19	24	31	42	48	20
2021	25	22	22	25	19	32	24	16	20			
Parentage - SEA												
2019	27	10	20	19	30	19	21	18	21	20	20	11
2020	14	19	13	10	5	9	14	12	10	13	14	23
2021	16	10	18	17	10	18	11	19	22			

MRJC	Jan	Feb	Mar	Apr	May	Jun	Jul	Aug	Sep	Oct	Nov	Dec
TOTAL - MRJC												
2019	1480	1070	1408	1315	1354	1158	1303	1211	1200	1384	1232	1131
2020	1267	1242	1041	568	642	869	916	915	871	941	731	850
2021	875	893	1072	924	855	907	959	901	948			
Civil - MRJC												
2019	1003	711	888	810	870	695	826	688	725	848	777	743
2020	839	781	677	317	355	457	494	479	444	515	394	469
2021	473	475	523	451	426	479	492	465	489			
Domestic - MRJC												
2019	244	174	271	279	253	253	264	279	261	286	269	207
2020	229	237	194	112	108	212	232	219	230	226	159	186
2021	186	182	255	214	204	194	231	199	211			
Probate - MRJC												
2019	176	132	184	162	164	149	149	174	166	189	137	134
2020	155	153	129	121	127	159	144	168	155	157	139	148
2021	167	191	237	207	185	190	193	196	185			
Guardianship - MRJC												
2019	18	24	26	28	23	21	25	30	13	15	17	16
2020	19	31	15	12	29	26	18	19	19	19	22	22
2021	20	18	34	23	17	13	21	21	37			
Adoption - MRJC												
2019	18	24	26	28	23	21	25	30	13	15	18	8
2020	10	16	10	4	9	1	15	7	5	5	8	9
2021	5	8	7	9	7	10	3	6	7			
Parentage - MRJC												
2019	31	16	21	16	30	26	26	24	27	26	24	23
2020	15	24	16	1	14	14	13	23	18	19	9	16
2021	24	19	16	20	16	21	19	4	19			

“Civil” includes all civil actions (including RALJ), except “Matters Filed with Clerk” (Petition for Order Granting Judgment on Confession of Judgment, Tax Warrants, Abstract of Judgment, Foreign Judgment, and Transcript of Judgment), Domestic, Probate, Guardianship, Adoption, and Paternity cases.

Table 2. Monthly Resolutions

SEA	Jan	Feb	Mar	Apr	May	Jun	Jul	Aug	Sep	Oct	Nov	Dec
TOTAL - SEA												
2019	1787	1493	1796	2005	1889	1737	1874	1939	1594	2027	1681	1775
2020	1748	1603	1392	1024	1197	1414	1479	1504	1485	1538	1429	1722
2021	1467	1436	1729	1504	1418	1682	1738	1504	1496			
Civil - SEA												
2019	976	763	946	969	1016	919	975	1038	885	1123	954	886
2020	919	849	777	484	513	665	717	749	751	759	667	773
2021	695	624	785	618	672	756	889	721	681			
Domestic - SEA												
2019	288	282	349	433	352	331	405	419	289	398	321	410
2020	329	283	256	183	224	310	294	272	285	341	302	410
2021	321	304	356	329	273	337	331	303	332			
Probate - SEA												
2019	431	380	444	512	431	404	436	380	337	407	324	389
2020	441	403	289	303	412	390	393	409	377	362	376	449
2021	402	444	507	475	395	507	440	411	406			
Guardianship - SEA												
2019	57	36	22	36	40	32	23	39	33	46	27	36
2020	25	34	46	41	27	29	28	39	33	29	36	45
2021	28	24	43	37	42	37	39	36	47			
Adoption - SEA												
2019	21	23	15	31	25	30	21	45	30	22	33	32
2020	15	21	15	8	10	18	29	21	21	29	33	36
2021	13	26	25	25	20	25	26	19	17			
Parentage - SEA												
2019	14	9	20	24	25	21	14	18	20	31	22	22
2020	19	13	9	5	1	2	18	14	18	18	15	9
2021	8	14	13	20	16	20	13	15	13			

MRJC	Jan	Feb	Mar	Apr	May	Jun	Jul	Aug	Sep	Oct	Nov	Dec
TOTAL - MRJC												
2019	1308	1048	1337	1270	1354	1266	1306	1388	1236	1576	1264	1137
2020	1242	1095	968	551	586	823	859	860	848	867	762	944
2021	760	868	957	923	819	918	1275	881	923			
Civil - MRJC												
2019	865	677	866	776	866	800	822	887	784	1023	882	691
2020	801	677	650	305	325	427	461	499	447	460	390	476
2021	406	468	490	449	397	494	840	471	480			
Domestic - MRJC												
2019	226	182	237	269	262	265	276	264	250	286	219	282
2020	248	231	160	104	113	201	215	148	191	240	188	269
2021	194	197	215	232	198	210	221	195	218			
Probate - MRJC												
2019	171	149	187	162	160	139	151	159	159	206	125	121
2020	146	136	119	108	132	163	135	160	160	142	135	157
2021	131	160	206	198	176	176	173	182	180			
Guardianship - MRJC												
2019	18	17	15	17	26	27	17	31	13	23	12	13
2020	14	20	18	26	9	15	25	28	19	16	22	24
2021	15	15	20	25	26	18	11	10	23			
Adoption - MRJC												
2019	5	6	8	25	14	6	17	16	7	17	9	14
2020	12	8	8	7	4	2	14	6	13	2	4	3
2021	3	7	4	5	5	9	7	10	4			
Parentage - MRJC												
2019	23	17	24	21	26	29	23	31	23	21	17	16
2020	21	23	13	1	3	15	9	19	18	16	23	15
2021	11	21	22	14	17	11	23	13	18			

“Civil” includes all civil actions (including RALJ), except “Matters Filed with Clerk” (Petition for Order Granting Judgment on Confession of Judgment, Tax Warrants, Abstract of Judgment, Foreign Judgment, and Transcript of Judgment), Domestic, Probate, Guardianship, Adoption, and Parentage cases.

Table 3. Percentage of Cases Resolved in Specified Time Intervals

SEA	Sep 2020	Oct 2020	Nov 2020	Dec 2020	Jan 2021	Feb 2021	Mar 2021	Apr 2021	May 2021	Jun 2021	Jul 2021	Aug 2021	Sep 2021
Civil - SEA													
90% in 12 months	82%	83%	83%	82%	77%	80%	80%	80%	73%	83%	75%	82%	82%
98% in 18 months	96%	96%	95%	95%	93%	91%	93%	90%	84%	93%	85%	93%	95%
100% in 24 months	99%	98%	98%	98%	98%	95%	97%	96%	91%	96%	91%	97%	97%
Domestic - SEA													
90% in 8 months	50%	48%	53%	60%	54%	57%	55%	60%	63%	58%	58%	61%	65%
98% in 10 months	58%	64%	68%	70%	64%	65%	66%	71%	73%	70%	70%	71%	71%
100% in 14 months	87%	84%	88%	89%	85%	89%	80%	88%	87%	89%	90%	89%	90%
Probate - SEA													
90% in 8 months	99%	98%	99%	98%	98%	98%	99%	98%	96%	98%	98%	98%	99%
98% in 18 months	99%	99%	100%	99%	100%	99%	99%	99%	97%	98%	98%	99%	100%
100% in 36 months	99%	99%	100%	100%	100%	100%	99%	99%	98%	99%	99%	100%	100%
Guardianship - SEA													
90% in 8 months	94%	100%	97%	96%	96%	96%	100%	97%	93%	97%	97%	94%	87%
98% in 18 months	94%	100%	100%	98%	100%	100%	100%	97%	95%	100%	100%	97%	96%
100% in 36 months	97%	100%	100%	100%	100%	100%	100%	97%	98%	100%	100%	100%	96%
Adoption - SEA													
90% in 8 months	76%	100%	94%	92%	85%	89%	80%	88%	100%	88%	92%	100%	88%
98% in 10 months	91%	100%	94%	95%	92%	92%	92%	88%	100%	92%	96%	100%	88%
100% in 14 months	100%	100%	100%	97%	100%	100%	100%	88%	100%	96%	96%	100%	94%
Parentage - SEA													
90% in 8 months	83%	61%	73%	78%	75%	100%	62%	90%	94%	85%	77%	57%	62%
98% in 10 months	89%	67%	80%	78%	100%	100%	62%	90%	94%	85%	85%	64%	62%
100% in 14 months	95%	83%	87%	89%	100%	100%	92%	90%	100%	90%	100%	86%	77%
MRJC													
Civil - MRJC													
90% in 12 months	90%	92%	91%	87%	86%	87%	90%	90%	89%	92%	70%	87%	79%
98% in 18 months	97%	97%	98%	94%	96%	94%	97%	97%	96%	96%	81%	96%	92%
100% in 24 months	99%	99%	99%	98%	99%	96%	98%	99%	98%	98%	87%	98%	99%
Domestic - MRJC													
90% in 8 months	52%	45%	51%	58%	59%	61%	56%	60%	58%	57%	56%	62%	57%
98% in 10 months	61%	63%	69%	72%	67%	69%	66%	67%	69%	68%	65%	70%	63%
100% in 14 months	80%	85%	89%	86%	89%	82%	81%	79%	80%	86%	82%	91%	86%
Probate - MRJC													
90% in 8 months	100%	97%	96%	96%	99%	98%	100%	98%	98%	98%	99%	98%	98%
98% in 18 months	100%	99%	99%	99%	100%	98%	100%	100%	99%	99%	99%	99%	99%
100% in 36 months	100%	99%	100%	100%	100%	100%	100%	100%	99%	99%	99%	100%	100%
Guardianship - MRJC													
90% in 8 months	95%	88%	100%	96%	73%	93%	67%	100%	100%	94%	100%	90%	91%
98% in 18 months	95%	100%	100%	100%	93%	100%	83%	100%	100%	94%	100%	100%	100%
100% in 36 months	95%	100%	100%	100%	100%	100%	100%	100%	100%	94%	100%	100%	100%
Adoption - MRJC													
90% in 8 months	77%	50%	100%	100%	67%	57%	50%	100%	100%	78%	100%	90%	100%
98% in 10 months	77%	50%	100%	100%	100%	57%	50%	100%	100%	78%	100%	90%	100%
100% in 14 months	85%	100%	100%	100%	100%	57%	75%	100%	100%	89%	100%	90%	100%
Parentage - MRJC													
90% in 8 months	50%	13%	44%	47%	36%	48%	59%	57%	47%	73%	39%	54%	50%
98% in 10 months	78%	69%	87%	67%	46%	67%	68%	71%	65%	91%	57%	77%	67%
100% in 14 months	95%	88%	91%	93%	64%	81%	77%	86%	71%	91%	78%	85%	83%

Age of resolved cases – the time between filing and resolution, minus any suspense time if applicable.

Court adopted time guideline (based on suggestion from BJA State Advisory Committee, see LCR 4 official comment): (a) Civil - 90% by 360 days (12 months), 98% by 540 days (18 months); (b) Domestic - 90% by 240 days (8 months), 98% by 300 days (10 months); (c) Probate/Guardianship - 90% by 240 days (8 months), 98% by 540 days (18 months); (d) Adoption/Parentage - 90% by 240 days (8 months); 98% by 300 days (10 months).

“Civil” includes all civil actions (including RALJ), except “Matters Filed with Clerk” (Petition for Order Granting Judgment on Confession of Judgment, Tax Warrants, Abstract of Judgment, Foreign Judgment, and Transcript of Judgment), Domestic, Probate, Guardianship, Adoption, and Parentage cases.

Table 4. Pending Caseload at the End of the Month

SEA	Jan	Feb	Mar	Apr	May	Jun	Jul	Aug	Sep	Oct	Nov	Dec
TOTAL - SEA												
2020	8611	8550	8504	8879	8853	8873	8735	9036	8999	8996	9053	8845
2021	8759	8876	8860	8916	8968	8976	8503	8747	8775			
Civil - SEA												
2020	5165	5043	5033	5217	5218	5189	5043	5191	5128	5131	5153	5074
2021	4932	5028	4993	5019	5028	4991	4650	4686	4652			
Domestic - SEA												
2020	2580	2596	2571	2694	2647	2669	2657	2789	2816	2778	2755	2612
2021	2584	2590	2583	2581	2612	2634	2518	2674	2695			
Probate - SEA												
2020	485	513	515	566	572	582	622	623	620	639	678	700
2021	742	747	782	807	832	839	837	876	863			
Guardianship - SEA												
2020	157	162	146	143	158	163	162	172	175	191	196	184
2021	210	231	221	230	226	236	231	238	285			
Adoption - SEA												
2020	140	152	151	164	158	165	152	161	172	180	193	182
2021	193	187	185	185	183	189	179	184	185			
Parentage - SEA												
2020	84	84	88	95	100	105	99	100	88	77	78	93
2021	98	93	96	94	87	87	88	89	95			

MRJC	Jan	Feb	Mar	Apr	May	Jun	Jul	Aug	Sep	Oct	Nov	Dec
TOTAL - MRJC												
2020	5116	5168	5161	5283	5232	5230	5158	5348	5317	5332	5312	5240
2021	5273	5340	5426	5422	5423	5480	5048	5142	5065			
Civil - MRJC												
2020	2702	2755	2754	2802	2750	2747	2691	2723	2725	2733	2741	2747
2021	2741	2778	2773	2767	2777	2801	2398	2406	2359			
Domestic - MRJC												
2020	1867	1840	1830	1885	1856	1842	1825	1957	1957	1932	1914	1833
2021	1823	1821	1863	1855	1845	1852	1817	1869	1831			
Probate - MRJC												
2020	236	252	263	287	279	287	294	316	303	321	329	323
2021	355	390	419	429	435	452	467	485	422			
Guardianship - MRJC												
2020	96	99	94	89	111	122	116	110	106	110	108	106
2021	113	115	130	129	118	114	118	131	206			
Adoption - MRJC												
2020	64	68	69	67	71	69	69	72	65	66	71	76
2021	78	80	84	86	88	91	84	82	84			
Parentage - MRJC												
2020	151	154	151	153	165	163	163	170	161	160	149	155
2021	163	156	157	156	160	170	164	169	163			

SEA/MRJC	Jan	Feb	Mar	Apr	May	Jun	Jul	Aug	Sep	Oct	Nov	Dec
2020	13727	13718	13665	14162	14085	14103	13893	14384	14316	14318	14365	14085
2021	14032	14216	14286	14338	14391	14456	13551	13889	13840			

Pending caseload = cases remain active and unresolved at the end of reporting period, excluding cases on suspense status (in arbitration, appeal).

“Civil” includes all civil actions (including RALJ), except “Matters Filed with Clerk” (Petition for Order Granting Judgment on Confession of Judgment, Tax Warrants, Abstract of Judgment, Foreign Judgment, and Transcript of Judgment), Domestic, Probate, Guardianship, Adoption, and Parentage cases.

Table 5. Age of Pending Cases

SEA	Sep 2020	Oct 2020	Nov 2020	Dec 2020	Jan 2021	Feb 2021	Mar 2021	Apr 2021	May 2021	Jun 2021	Jul 2021	Aug 2021	Sep 2021
Civil – SEA													
Median Age (50 th percentile) *	206	208	201	200	196	196	195	198	200	199	192	193	191
# of Cases in Age Interval													
0 - 120 days (0 - 4 months)	1713	1813	1840	1757	1702	1720	1725	1775	1789	1733	1635	1677	1653
121 - 240 days (5 - 8 months)	1239	1082	1026	1068	1080	1156	1127	1092	1063	1078	1020	1058	1045
241 - 360 days (9 - 12 months)	1038	1011	981	891	799	741	685	710	731	750	688	670	646
361 - 540 days (13 - 18 months)	660	705	723	746	720	780	762	691	671	633	582	505	490
541 - 720 days (19 - 24 months)	311	322	356	364	361	327	369	411	398	417	403	453	433
> 720 days (> 24 months)	167	198	227	248	270	304	325	340	376	380	322	323	385
Domestic – SEA													
Median Age (50 th percentile) *	147	138	140	150	158	158	156	148	144	142	143	142	140
# of Cases in Age Interval													
0 - 120 days (0 - 4 months)	1283	1273	1218	1092	1033	1020	1085	1158	1167	1196	1108	1210	1235
121 - 240 days (5 - 8 months)	608	556	612	654	706	737	671	584	569	561	571	634	630
241 - 360 days (9 - 12 months)	423	425	402	371	331	307	334	366	399	393	347	319	330
361 - 540 days (13 - 18 months)	267	271	256	225	244	254	219	191	192	197	188	188	179
> 540 days (> 18 months)	235	253	267	270	270	272	274	282	285	287	304	323	321
Probate – SEA													
Median Age (50 th percentile) *	295	297	289	270	256	279	271	271	281	296	314	310	340
# of Cases in Age Interval													
0 - 120 days (0 - 4 months)	203	207	228	229	256	229	251	256	256	251	232	244	224
121 - 240 days (5 - 8 months)	79	84	91	102	101	120	119	120	132	124	123	127	117
241 - 360 days (9 - 12 months)	61	61	54	64	67	73	78	85	79	93	98	99	103
361 - 540 days (13 - 18 months)	65	61	71	64	71	66	65	73	82	85	85	99	98
> 540 days (> 18 months)	212	226	234	241	247	259	269	273	283	286	299	307	321
Guardianship – SEA													
Median Age (50 th percentile) *	118	115	134	191	173	144	181	183	214	197	243	241	172
# of Cases in Age Interval													
0 - 120 days (0 - 4 months)	88	96	94	75	92	111	96	101	92	89	81	86	119
121 - 240 days (5 - 8 months)	27	30	30	31	35	31	30	26	27	35	34	33	44
241 - 360 days (9 - 12 months)	6	11	17	24	24	26	27	29	28	26	23	22	22
361 - 540 days (13 - 18 months)	5	5	6	4	9	12	16	22	28	35	36	36	37
> 540 days (> 18 months)	49	49	49	50	50	51	52	52	51	51	57	61	63
Adoption – SEA													
Median Age (50 th percentile) *	241	246	197	272	223	251	265	256	298	283	356	347	359
# of Cases in Age Interval													
0 - 120 days (0 - 4 months)	65	70	84	73	78	70	63	61	57	58	47	46	46
121 - 240 days (5 - 8 months)	21	19	15	16	21	23	28	31	28	28	24	28	27
241 - 360 days (9 - 12 months)	13	14	19	16	12	7	7	9	12	16	20	20	20
361 - 540 days (13 - 18 months)	16	18	15	14	17	20	15	11	12	12	11	9	11
> 540 days (> 18 months)	57	59	60	63	65	67	72	73	74	73	77	81	81
Parentage – SEA													
Median Age (50 th percentile) *	154	136	143	106	102	123	133	139	174	155	155	139	121
# of Cases in Age Interval													
0 - 120 days (0 - 4 months)	36	36	37	50	54	44	45	44	35	40	40	41	47
121 - 240 days (5 - 8 months)	23	16	15	16	17	22	26	22	23	14	11	17	18
241 - 360 days (9 - 12 months)	10	12	10	12	10	7	6	10	9	15	16	8	11
361 - 540 days (13 - 18 months)	10	5	7	6	8	10	8	8	9	7	6	9	6
> 540 days (> 18 months)	9	8	9	9	9	10	11	10	11	11	15	14	13

*Age of active pending cases is time elapsed from filing date to the end of the reporting period, minus any suspense time (in appeal, stay, mediation, arbitration) if applicable. The “median age” indicates the age of half (50%) of the pending cases (half are more, half are less) than the number of days indicated in the table.

“Civil” includes all civil actions (including RALJ), except “Matters Filed with Clerk” (Petition for Order Granting Judgment on Confession of Judgment, Tax Warrants, Abstract of Judgment, Foreign Judgment, and Transcript of Judgment), Domestic, Probate, Guardianship, Adoption, and Paternity cases.

Table 5. Age of Pending Cases (cont.)

MRJC	Sep 2020	Oct 2020	Nov 2020	Dec 2020	Jan 2021	Feb 2021	Mar 2021	Apr 2021	May 2021	Jun 2021	Jul 2021	Aug 2021	Sep 2021
Civil - MRJC													
Median Age (50 th percentile) *	203	206	208	203	206	208	205	206	215	223	199	196	200
# of Cases in Age Interval													
0 - 120 days (0 - 4 months)	949	961	938	953	972	959	1001	972	951	904	824	858	836
121 - 240 days (5 - 8 months)	670	609	531	569	555	583	521	527	542	557	533	525	480
241 - 360 days (9 - 12 months)	495	534	581	518	461	417	346	380	363	376	264	296	316
361 - 540 days (13 - 18 months)	309	301	330	315	343	407	481	434	437	442	344	231	200
541 - 720 days (19 - 24 months)	197	219	232	234	229	217	191	194	202	211	200	254	267
> 720 days (> 24 months)	105	109	129	158	181	195	233	260	282	311	233	242	260
Domestic- MRJC													
Median Age (50 th percentile) *	174	145	153	162	166	165	167	165	153	154	153	161	161
# of Cases in Age Interval													
0 - 120 days (0 - 4 months)	841	856	792	725	688	685	759	781	796	772	753	753	749
121 - 240 days (5 - 8 months)	376	357	392	437	488	485	439	416	390	395	423	462	448
241 - 360 days (9 - 12 months)	326	314	291	229	186	196	215	243	262	272	236	232	220
361 - 540 days (13 - 18 months)	195	181	208	206	212	199	188	150	135	139	124	140	133
> 540 days (> 18 months)	219	242	231	236	249	256	262	265	262	274	281	282	281
Probate - MRJC													
Median Age (50 th percentile) *	297	300	299	325	283	237	225	220	231	225	234	233	327
# of Cases in Age Interval													
0 - 120 days (0 - 4 months)	92	104	111	93	125	146	159	162	162	163	155	156	113
121 - 240 days (5 - 8 months)	40	35	36	44	42	50	61	59	59	68	82	90	67
241 - 360 days (9 - 12 months)	44	48	40	33	32	30	29	36	36	41	42	41	43
361 - 540 days (13 - 18 months)	26	29	33	43	45	47	47	42	42	38	41	42	40
> 540 days (> 18 months)	101	41	109	110	111	117	123	130	136	142	147	156	159
Guardianship - MRJC													
Median Age (50 th percentile) *	161	167	197	228	223	200	141	169	211	243	266	260	146
# of Cases in Age Interval													
0 - 120 days (0 - 4 months)	43	46	43	41	52	53	62	54	45	37	37	49	94
121 - 240 days (5 - 8 months)	28	21	18	14	5	6	12	18	17	18	18	13	41
241 - 360 days (9 - 12 months)	9	17	21	24	24	18	13	10	3	6	10	16	18
361 - 540 days (13 - 18 months)	5	4	4	4	8	13	18	22	27	27	24	15	12
> 540 days (> 18 months)	21	6	22	23	24	25	25	25	26	26	29	38	41
Adoption - MRJC													
Median Age (50 th percentile) *	528	544	497	488	509	495	490	488	487	492	548	611	609
# of Cases in Age Interval													
0 - 120 days (0 - 4 months)	8	10	13	16	19	23	23	19	18	17	12	8	10
121 - 240 days (5 - 8 months)	8	6	4	5	4	4	8	13	16	19	14	13	10
241 - 360 days (9 - 12 months)	7	6	8	9	7	5	3	3	3	4	7	11	14
361 - 540 days (13 - 18 months)	11	11	12	12	12	11	12	10	8	9	8	4	2
> 540 days (> 18 months)	31	22	34	34	36	37	38	41	43	42	43	46	48
Parentage - MRJC													
Median Age (50 th percentile) *	206	142	155	158	150	147	149	138	137	150	146	159	154
# of Cases in Age Interval													
0 - 120 days (0 - 4 months)	64	68	63	58	63	66	72	74	66	68	68	66	68
121 - 240 days (5 - 8 months)	41	29	28	41	52	47	44	41	47	53	53	55	47
241 - 360 days (9 - 12 months)	35	37	27	22	18	14	12	16	24	24	20	23	25
361 - 540 days (13 - 18 months)	18	18	24	26	24	23	21	16	13	14	11	10	11
> 540 days (> 18 months)	3	24	7	8	6	6	8	9	10	11	12	15	12

*Age of active pending cases is time elapsed from filing date to the end of the reporting period, minus any suspense time (in appeal, stay, mediation, arbitration) if applicable. The "median age" indicates the age of half (50%) of the pending cases (half are more, half are less) than the number of days indicated in the table.

"Civil" includes all civil actions (including RALJ), except "Matters Filed with Clerk" (Petition for Order Granting Judgment on Confession of Judgment, Tax Warrants, Abstract of Judgment, Foreign Judgment, and Transcript of Judgment), Domestic, Probate, Guardianship, Adoption, and Parentage cases.

Table 6. SEA/MRJC Filings, Resolutions, and Pending Caseload as a Percentage of All Cases

	Sep 2020	Oct 2020	Nov 2020	Dec 2020	Jan 2021	Feb 2021	Mar 2021	Apr 2021	May 2021	Jun 2021	Jul 2021	Aug 2021	Sep 2021
Total Filings													
SEA - # of Cases Filed	1547	1587	1495	1515	1473	1490	1734	1626	1467	1638	1501	1592	1632
MRJC - # of Cases Filed	871	941	731	850	875	893	1072	924	855	907	959	901	948
SEA %	64%	63%	67%	64%	63%	63%	62%	64%	63%	64%	61%	64%	63%
MRJC %	36%	37%	33%	36%	37%	37%	38%	36%	37%	36%	39%	36%	37%
Total Resolutions													
SEA - # of Cases Resolved	1485	1538	1429	1722	1467	1436	1729	1504	1418	1682	1738	1504	1496
MRJC - # of Cases Resolved	848	876	762	944	760	868	957	923	819	918	1275	881	923
SEA %	64%	64%	65%	65%	66%	62%	64%	62%	63%	65%	58%	63%	62%
MRJC %	36%	36%	35%	35%	34%	38%	36%	38%	37%	35%	42%	37%	38%
Total Pending Cases													
SEA - # of Cases Pending	8999	8996	9053	8845	8759	8876	8860	8916	8968	8976	8503	8747	8775
MRJC - # of Cases Pending	5317	5322	5312	5240	5273	5340	5426	5422	5423	5480	5048	5142	5065
SEA %	63%	63%	63%	63%	62%	62%	62%	62%	62%	62%	63%	63%	63%
MRJC %	37%	37%	37%	37%	38%	38%	38%	38%	38%	38%	37%	37%	37%

All civil actions (including RALJ), except "Matters Filed with Clerk" (Petition for Order Granting Judgment on Confession of Judgment, Tax Warrants, Abstract of Judgment, Foreign Judgment, and Transcript of Judgment), Domestic, Probate, Guardianship, Adoption, and Parentage cases.

Appendix Glossary and Definition

Active Status

A case is active if it is not on suspense status (see Suspense Status).

Adoption and Parentage Cases (case type 5)

ADP - Adoption
CFI - Confidential Intermediary
CHN - Confidential Change of Name
DIP - Disestablishment of Parentage
MDS - Modification/Support Only
MOD - Modification
MSC - Miscellaneous
OAA - Open Adoption Agreement
PAD - De Facto Parentage
PAG - Pre Birth Establish Parentage Genetic
PAS - Establish Parentage Gestational Surrogacy
PAT - Parentage
PPR - Initial Pre Placement Report
PRC - Parentage Rescission/Challenge
PUR - Parentage (URES/UFSA)
REL - Relinquishment
ROB - Relocation Objection
TER - Termination of Parental Rights

Case

A case is defined as a filing with an assigned case number.

Civil Cases (case type 2, no RALJ)

ALR - Administrative Law Review
ALRLI - L&I Administrative Law Review
AOD - Assurance of Discontinuance
ASB - Asbestos
ASP - Asbestos Personal Injury
ASW - Asbestos Wrongful Death
BAT - Petition to Appeal/Amend Ballot Title
CAA - Motion to Confirm/Compel Arbitration Award
CFJ - Petition for Order Granting Judgment on Confession of Judgment
CHN - Non Confidential Change of Name
COL - Collection
COM - Commercial
CON - Condemnation
CRP - Certificate of Restoration of Opportunity
CRR - Petition for Certificate of Rehabilitation
DOL - Appeal Licensing Revocation
DSF - Notice of Deposit of Surplus Funds from Trustee's Sale of Real Property
DVP - Domestic Violence
ECP - Enforcement of Canadian Protection Order
EOM - Emancipation of Minor
FOR - Foreclosure
FPO - Foreign Protection Order
FVL - Motion to Show Cause /Frivolous Lien
HAR - Unlawful Harassment
HSI - Application for Health & Safety Inspection
INJ - Injunction
IPL - Complaint for Interpleader
LUP - Land Use Petition
MAL - Other Malpractice
MED - Medical Malpractice
MER - Meretricious Relationships
MHA - Malicious Harassment
MSC - Miscellaneous
MST - Minor Settlement
MWP - Minor Work Permit
NJF - Non Judicial Filing
OSS - Petition to Issue Out of State Subpoena
PBC - Petition for Birth Certificate Change
PBJ - Petition for Justification /Bail Bond Company
PCC - Petition for Civil Commitment
PFA - Property Fairness Act
PIN - Personal Injury
PPT - Petition for Perpetuation of Testimony
PRA - Public Records Act

PRG - Property Damage /Gangs
PRP - Property Damage
PVO - Petition for Vehicle Ownership
QTI - Quiet Title
RCV - Petition to Appoint Receiver
RDR - Relief from Duty to Register
RFR - Restoration of Firearms Rights
RRC - Remove Restricted Covenant
SCA - Small Claims Appeal
SDR - School District /Required Action Plan
SER - Subdivision Election Process Law Review
SPC - Seizure of Property From Commission of a Crime
SPR - Seizure of Property Resulting From a Crime
STK - Stalking Protection
SXP - Sexual Assault Protection
TMV - Tort /Motor Vehicle
TSS - Petition for Approval of Transfer of Structured Settlement
TTO - Tort /Other
UND - Unlawful Detainer
VAP - Vulnerable Adult Protection Order
VEP - Voter Election Process Law Review
VVT - Victims of Motor Vehicle Theft /Civil Action
WDE - Wrongful Death
WHC - Writ of Habeas Corpus
WMW - Miscellaneous Writs
WRM - Writ of Mandamus
WRR - Writ of Restitution
WRV - Writ of Review
XRP - Extreme Risk Protection Order

Completion

A case is completed if dispositive document is filed with the court following resolution.

Domestic Cases (case type 3)

CIR - Committed Intimate Relationship
CUS - Child Custody
DIC - Dissolution w/ Children
DIN - Dissolution no Children
DIS - Dissolution
DPC - Dissolution of Domestic Partnership w/ Children
DPN - Dissolution of Domestic Partnership /No Children
FIU - Out of State Support Registration /Foreign Judgment
INC - Annulment /Inv of Marriage w/ Children
IND - Annulment /Inv of Domestic Partnership w/ Children
INP - Invalidity, Domestic Partnership
INV - Annulment /Invalidity
MDS - Modification/Support Only
MOD - Modification
MSC - Miscellaneous
MWA - Mandatory Wage Assignment
OSC - Out of State Custody
PPS - Parenting Plan / Child Support
PSO - Petition for Entry of KC Support Order
RCV - Relative Child Visitation
RIC - Reciprocal, Resp in County
ROB - Relocation /Objection
ROC - Reciprocal, Resp out of County
RVC - Relative Child Visits
SDC - Legal Separation, Domestic Partnership w/ Children
SEC - Legal Separation w/ Children
SEP - Legal Separation
SPD - Legal Separation, Domestic Partnership /No Children
TSS - Structured Settlement
EFC - Extended Foster Care, Dependency
GFC - Guardianship Foster Children
RPR - Reinstatement of Parental Rights
RVS - Relative Visitation
TRU - Truancy
VYG - Vulnerable Youth Guardianship

Probate and Guardianship Cases (case type 4)

ABS - Absentee
AOS - Affidavit of Successor
ASE - Affidavit of Small Estate
DSC - Disclaimer
EST - Estate
FNW - Foreign Will
G/E - Guardianship/Estate
GDE - Guardianship of the Estate
GDN - Guardianship
GDP - Guardianship of the Person
LGD - Limited Guardianship
LGE - Limited Guardianship of the Estate
LGP - Limited Guardianship of the Person
MGD - Minor Guardianship
MSC - Miscellaneous
MST - Minor Settlement
NJB - Non Judicial Binding/TEDRA Agreement
NNC - Non Probate Notice to Creditor
POA - Petition for Relief (RCW 11.94) /Power of Attorney
RGR - Registration of Guardianship
RTR - Registration of Trust /Trust Situs
SNT - Special Needs Trust
TDR - Trust/Estate Dispute Resolution
TRS - Trust
WLL - Will Only

Resolution

A case is resolved if all issues in the complaint are fully adjudicated.

Suspended Case

A case is placed in suspense status from active status during the reporting period.

Suspense Status

A case is on suspense status if it is on warrant, appeal, stay, mediation, arbitration ("Deferred Prosecution" is not a suspense status, but is treated as a resolution).