



# King County

Department of Judicial Administration

*Barbara Miner*

*Director and Superior Court Clerk*

(206) 296-9300 (206) 296-0100 TTY/TDD

King County Superior Court

## Civil Department Statistical Report

July 2021

Department of Judicial Administration

Prepared by: Shiquan Liao, Ph.D., Statistician

August 15, 2021

**Report #: CIVIL-2021-07**

*Seattle:*  
516 Third Avenue Room E609  
Seattle, WA 98104-2386

*Regional Justice Center:*  
401 Fourth Avenue North Room 2C  
Kent, WA 98032-4429

*Juvenile Division:*  
1211 East Alder Room 3015  
Seattle, WA 98122-5598

## Civil Statistics Summary

**NOTE: Washington State Supreme Court orders related to the coronavirus pandemic, beginning March 2020, affect the statistics for the foreseeable future.**

The civil statistics report provides an overview of caseload for the civil department. The report includes the number of filings, number of resolutions, number of pending cases, age of resolved cases, and age of pending cases for both SEA and MRJC locations.

The following categories are included in this report: **Civil, Domestic, Probate, Guardianship, Adoption, and Parentage.** This report includes all cases in these categories, regardless of whether or not a judge is assigned at filing.

*Please note that the category of “civil” in the tables of this report is more narrowly defined. Readers are encouraged to check the Appendix at the end of this report for precise definition of the terminology used in this report.*

- **Filings (Table 1, Figures 1)**

In July 2021, the number of filings was 2,460 cases (SEA: 1,501; MRJC: 959). Of those cases filed in July 2021, 39% were MRJC cases, and the remaining 64% were SEA cases.

- **Resolutions (Table 2, Figures 2)**

The total resolutions in July 2021 were 3,013 cases (SEA: 1,738; MRJC: 1,275). Of those cases resolved in July 2021, 42% of the resolutions were MRJC cases.

- **Age of Resolved Cases (Table 3)**

Table 3 shows the comparison between the court-adopted timeline standard (as suggested by the State Advisory Committee) with the actual age of resolved cases (time from filing to resolution). Even though the standard is not regularly met, the resolution time does not show any significant change over time.

- **Pending Caseload (Table 4, Figures 3) and Age of Pending Cases (Table 5)**

At the end of July 2021, the pending caseload for the civil department was 13,551 cases (8,503 or 63% were SEA cases, and 5,048 or 37% were MRJC cases). The age breakdown of pending cases is presented in Table 5. The pending caseload shows a number of “aged” cases remaining unresolved: SEA has 322 civil cases over 24 months, and 304 domestic cases over 18 months on its pending caseload. The MRJC has 233 general civil cases over 24 months and 281 domestic cases over 18 months on its pending caseload.

**Conclusions: Filings in recent months have been very low due to COVID-19. At the end of July 2021, the total pending caseload in the reporting categories was 13,551 cases. The pending caseload in the same reporting categories was 12,362, 13,567, 13,295, 15,059, 14,371, and 14,085 at the year end of 2015, 2016, 2017, 2018, 2019, and 2020 respectively.**

Figure 1. Monthly Filings for SEA, MRJC and SEA/MRJC Combined

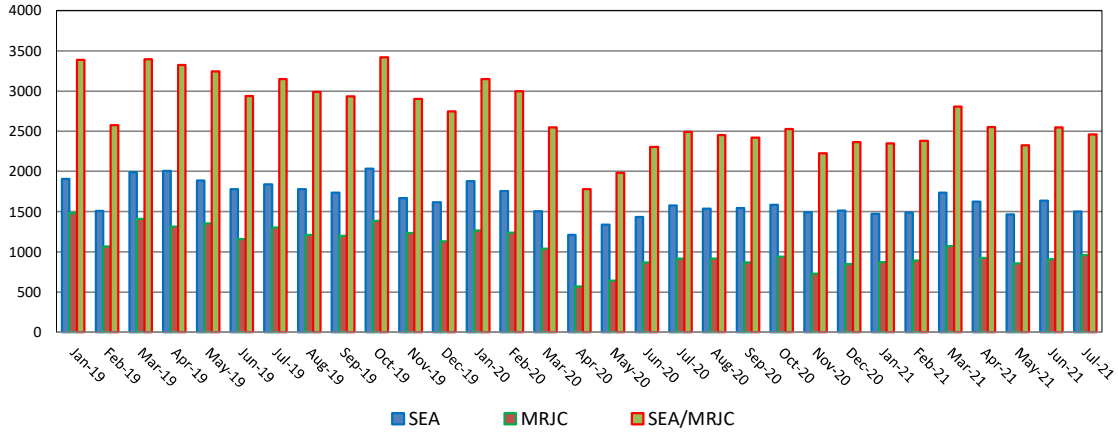


Figure 2. Monthly Resolutions for SEA, MRJC and SEA/MRJC Combined

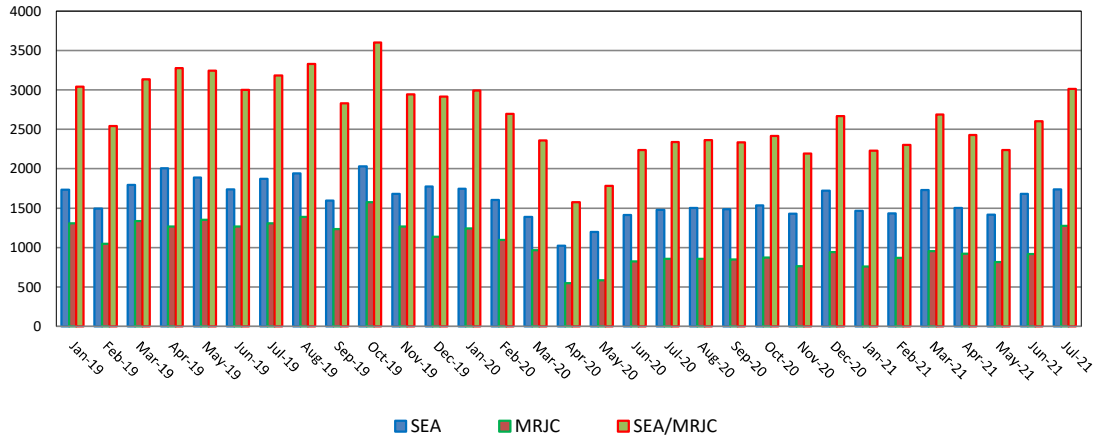


Figure 3. Monthly Pending Caseload for SEA, MRJC and SEA/MRJC Combined

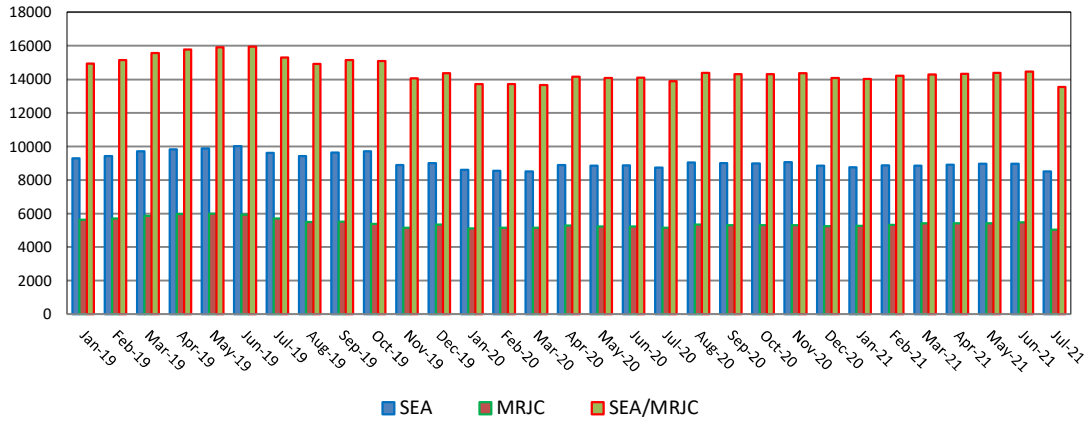


Table 1. Monthly New Filings

SEA	Jan	Feb	Mar	Apr	May	Jun	Jul	Aug	Sep	Oct	Nov	Dec
<b>TOTAL - SEA</b>												
2019	1905	1508	1990	2010	1890	1778	1842	1778	1733	2035	1670	1616
2020	1879	1755	1504	1209	1340	1433	1575	1540	1547	1587	1495	1515
2021	1473	1490	1734	1626	1467	1638	1501					
<b>Civil - SEA</b>												
2019	1009	799	1070	1026	1018	954	947	873	972	1160	897	893
2020	971	876	840	555	626	657	741	709	714	782	717	697
2021	662	705	761	713	685	699	712					
<b>Domestic - SEA</b>												
2019	372	257	379	401	343	334	375	420	357	393	336	273
2020	385	350	287	211	222	314	351	331	365	325	263	279
2021	276	276	352	338	297	341	300					
<b>Probate - SEA</b>												
2019	423	382	465	488	446	411	416	389	327	403	348	390
2020	441	429	315	382	430	394	419	417	387	383	415	460
2021	442	433	545	486	418	502	421					
<b>Guardianship - SEA</b>												
2019	52	41	39	37	26	35	48	41	32	27	44	28
2020	35	47	33	32	42	33	31	47	40	42	38	36
2021	52	44	36	47	38	46	33					
<b>Adoption - SEA</b>												
2019	22	19	17	39	27	25	35	37	24	32	25	21
2020	33	34	16	19	15	26	19	24	31	42	48	20
2021	25	22	22	25	19	32	24					
<b>Parentage - SEA</b>												
2019	27	10	20	19	30	19	21	18	21	20	20	11
2020	14	19	13	10	5	9	14	12	10	13	14	23
2021	16	10	18	17	10	18	11					

MRJC	Jan	Feb	Mar	Apr	May	Jun	Jul	Aug	Sep	Oct	Nov	Dec
<b>TOTAL - MRJC</b>												
2019	1480	1070	1408	1315	1354	1158	1303	1211	1200	1384	1232	1131
2020	1267	1242	1041	568	642	869	916	915	871	941	731	850
2021	875	893	1072	924	855	907	959					
<b>Civil - MRJC</b>												
2019	1003	711	888	810	870	695	826	688	725	848	777	743
2020	839	781	677	317	355	457	494	479	444	515	394	469
2021	473	475	523	451	426	479	492					
<b>Domestic - MRJC</b>												
2019	244	174	271	279	253	253	264	279	261	286	269	207
2020	229	237	194	112	108	212	232	219	230	226	159	186
2021	186	182	255	214	204	194	231					
<b>Probate - MRJC</b>												
2019	176	132	184	162	164	149	149	174	166	189	137	134
2020	155	153	129	121	127	159	144	168	155	157	139	148
2021	167	191	237	207	185	190	193					
<b>Guardianship - MRJC</b>												
2019	18	24	26	28	23	21	25	30	13	15	17	16
2020	19	31	15	12	29	26	18	19	19	19	22	22
2021	20	18	34	23	17	13	21					
<b>Adoption - MRJC</b>												
2019	18	24	26	28	23	21	25	30	13	15	18	8
2020	10	16	10	4	9	1	15	7	5	5	8	9
2021	5	8	7	9	7	10	3					
<b>Parentage - MRJC</b>												
2019	31	16	21	16	30	26	26	24	27	26	24	23
2020	15	24	16	1	14	14	13	23	18	19	9	16
2021	24	19	16	20	16	21	19					

“Civil” includes all civil actions (including RALJ), except “Matters Filed with Clerk” (Petition for Order Granting Judgment on Confession of Judgment, Tax Warrants, Abstract of Judgment, Foreign Judgment, and Transcript of Judgment), Domestic, Probate, Guardianship, Adoption, and Paternity cases.

Table 2. Monthly Resolutions

SEA	Jan	Feb	Mar	Apr	May	Jun	Jul	Aug	Sep	Oct	Nov	Dec
<b>TOTAL - SEA</b>												
2019	1787	1493	1796	2005	1889	1737	1874	1939	1594	2027	1681	1775
2020	1748	1603	1392	1024	1197	1414	1479	1504	1485	1538	1429	1722
2021	1467	1436	1729	1504	1418	1682	1738					
<b>Civil - SEA</b>												
2019	976	763	946	969	1016	919	975	1038	885	1123	954	886
2020	919	849	777	484	513	665	717	749	751	759	667	773
2021	695	624	785	618	672	756	889					
<b>Domestic - SEA</b>												
2019	288	282	349	433	352	331	405	419	289	398	321	410
2020	329	283	256	183	224	310	294	272	285	341	302	410
2021	321	304	356	329	273	337	331					
<b>Probate - SEA</b>												
2019	431	380	444	512	431	404	436	380	337	407	324	389
2020	441	403	289	303	412	390	393	409	377	362	376	449
2021	402	444	507	475	395	507	440					
<b>Guardianship - SEA</b>												
2019	57	36	22	36	40	32	23	39	33	46	27	36
2020	25	34	46	41	27	29	28	39	33	29	36	45
2021	28	24	43	37	42	37	39					
<b>Adoption - SEA</b>												
2019	21	23	15	31	25	30	21	45	30	22	33	32
2020	15	21	15	8	10	18	29	21	21	29	33	36
2021	13	26	25	25	20	25	26					
<b>Parentage - SEA</b>												
2019	14	9	20	24	25	21	14	18	20	31	22	22
2020	19	13	9	5	1	2	18	14	18	18	15	9
2021	8	14	13	20	16	20	13					

MRJC	Jan	Feb	Mar	Apr	May	Jun	Jul	Aug	Sep	Oct	Nov	Dec
<b>TOTAL - MRJC</b>												
2019	1308	1048	1337	1270	1354	1266	1306	1388	1236	1576	1264	1137
2020	1242	1095	968	551	586	823	859	860	848	867	762	944
2021	760	868	957	923	819	918	1275					
<b>Civil - MRJC</b>												
2019	865	677	866	776	866	800	822	887	784	1023	882	691
2020	801	677	650	305	325	427	461	499	447	460	390	476
2021	406	468	490	449	397	494	840					
<b>Domestic - MRJC</b>												
2019	226	182	237	269	262	265	276	264	250	286	219	282
2020	248	231	160	104	113	201	215	148	191	240	188	269
2021	194	197	215	232	198	210	221					
<b>Probate - MRJC</b>												
2019	171	149	187	162	160	139	151	159	159	206	125	121
2020	146	136	119	108	132	163	135	160	160	142	135	157
2021	131	160	206	198	176	176	173					
<b>Guardianship - MRJC</b>												
2019	18	17	15	17	26	27	17	31	13	23	12	13
2020	14	20	18	26	9	15	25	28	19	16	22	24
2021	15	15	20	25	26	18	11					
<b>Adoption - MRJC</b>												
2019	5	6	8	25	14	6	17	16	7	17	9	14
2020	12	8	8	7	4	2	14	6	13	2	4	3
2021	3	7	4	5	5	9	7					
<b>Parentage - MRJC</b>												
2019	23	17	24	21	26	29	23	31	23	21	17	16
2020	21	23	13	1	3	15	9	19	18	16	23	15
2021	11	21	22	14	17	11	23					

“Civil” includes all civil actions (including RALJ), except “Matters Filed with Clerk” (Petition for Order Granting Judgment on Confession of Judgment, Tax Warrants, Abstract of Judgment, Foreign Judgment, and Transcript of Judgment), Domestic, Probate, Guardianship, Adoption, and Parentage cases.

Table 3. Percentage of Cases Resolved in Specified Time Intervals

SEA	Jul 2020	Aug 2020	Sep 2020	Oct 2020	Nov 2020	Dec 2020	Jan 2021	Feb 2021	Mar 2021	Apr 2021	May 2021	Jun 2021	Jul 2021
<b>Civil - SEA</b>													
90% in 12 months	87%	83%	82%	83%	83%	82%	77%	80%	80%	80%	73%	83%	75%
98% in 18 months	97%	95%	96%	96%	95%	95%	93%	91%	93%	90%	84%	93%	85%
100% in 24 months	98%	98%	99%	98%	98%	98%	98%	95%	97%	96%	91%	96%	91%
<b>Domestic - SEA</b>													
90% in 8 months	55%	56%	50%	48%	53%	60%	54%	57%	55%	60%	63%	58%	58%
98% in 10 months	69%	68%	58%	64%	68%	70%	64%	65%	66%	71%	73%	70%	70%
100% in 14 months	90%	86%	87%	84%	88%	89%	85%	89%	80%	88%	87%	89%	90%
<b>Probate - SEA</b>													
90% in 8 months	99%	98%	99%	98%	99%	98%	98%	98%	99%	98%	96%	98%	98%
98% in 18 months	99%	99%	99%	99%	100%	99%	100%	99%	99%	99%	97%	98%	98%
100% in 36 months	100%	99%	99%	99%	100%	100%	100%	100%	99%	99%	98%	99%	99%
<b>Guardianship - SEA</b>													
90% in 8 months	96%	64%	94%	100%	97%	96%	96%	96%	100%	97%	93%	97%	97%
98% in 18 months	100%	90%	94%	100%	100%	98%	100%	100%	100%	97%	95%	100%	100%
100% in 36 months	100%	100%	97%	100%	100%	100%	100%	100%	100%	97%	98%	100%	100%
<b>Adoption - SEA</b>													
90% in 8 months	100%	100%	76%	100%	94%	92%	85%	89%	80%	88%	100%	88%	92%
98% in 10 months	100%	100%	91%	100%	94%	95%	92%	92%	92%	88%	100%	92%	96%
100% in 14 months	100%	100%	100%	100%	100%	97%	100%	100%	100%	88%	100%	96%	96%
<b>Parentage - SEA</b>													
90% in 8 months	50%	50%	83%	61%	73%	78%	75%	100%	62%	90%	94%	85%	77%
98% in 10 months	67%	86%	89%	67%	80%	78%	100%	100%	62%	90%	94%	85%	85%
100% in 14 months	100%	93%	95%	83%	87%	89%	100%	100%	92%	90%	100%	90%	100%
<b>MRJC</b>													
<b>Civil - MRJC</b>													
90% in 12 months	92%	90%	90%	92%	91%	87%	86%	87%	90%	90%	89%	92%	70%
98% in 18 months	98%	98%	97%	97%	98%	94%	96%	94%	97%	97%	96%	96%	81%
100% in 24 months	100%	100%	99%	99%	99%	98%	99%	96%	98%	99%	98%	98%	87%
<b>Domestic - MRJC</b>													
90% in 8 months	50%	50%	52%	45%	51%	58%	59%	61%	56%	60%	58%	57%	56%
98% in 10 months	72%	68%	61%	63%	69%	72%	67%	69%	66%	67%	69%	68%	65%
100% in 14 months	93%	88%	80%	85%	89%	86%	89%	82%	81%	79%	80%	86%	82%
<b>Probate - MRJC</b>													
90% in 8 months	96%	100%	100%	97%	96%	96%	99%	98%	100%	98%	98%	98%	99%
98% in 18 months	96%	100%	100%	99%	99%	99%	100%	98%	100%	100%	99%	99%	99%
100% in 36 months	96%	100%	100%	99%	100%	100%	100%	100%	100%	100%	99%	99%	99%
<b>Guardianship - MRJC</b>													
90% in 8 months	100%	57%	95%	88%	100%	96%	73%	93%	67%	100%	100%	94%	100%
98% in 18 months	100%	82%	95%	100%	100%	100%	93%	100%	83%	100%	100%	94%	100%
100% in 36 months	100%	100%	95%	100%	100%	100%	100%	100%	100%	100%	100%	94%	100%
<b>Adoption - MRJC</b>													
90% in 8 months	100%	83%	77%	50%	100%	100%	67%	57%	50%	100%	100%	78%	100%
98% in 10 months	100%	83%	77%	50%	100%	100%	100%	57%	50%	100%	100%	78%	100%
100% in 14 months	100%	83%	85%	100%	100%	100%	100%	57%	75%	100%	100%	89%	100%
<b>Parentage - MRJC</b>													
90% in 8 months	22%	32%	50%	13%	44%	47%	36%	48%	59%	57%	47%	73%	39%
98% in 10 months	100%	79%	78%	69%	87%	67%	46%	67%	68%	71%	65%	91%	57%
100% in 14 months	100%	90%	95%	88%	91%	93%	64%	81%	77%	86%	71%	91%	78%

Age of resolved cases – the time between filing and resolution, minus any suspense time if applicable.

Court adopted time guideline (based on suggestion from BJA State Advisory Committee, see LCR 4 official comment): (a) Civil - 90% by 360 days (12 months), 98% by 540 days (18 months); (b) Domestic - 90% by 240 days (8 months), 98% by 300 days (10 months); (c) Probate/Guardianship - 90% by 240 days (8 months), 98% by 540 days (18 months); (d) Adoption/Parentage - 90% by 240 days (8 months); 98% by 300 days (10 months).

“Civil” includes all civil actions (including RALJ), except “Matters Filed with Clerk” (Petition for Order Granting Judgment on Confession of Judgment, Tax Warrants, Abstract of Judgment, Foreign Judgment, and Transcript of Judgment), Domestic, Probate, Guardianship, Adoption, and Parentage cases.

Table 4. Pending Caseload at the End of the Month

SEA	Jan	Feb	Mar	Apr	May	Jun	Jul	Aug	Sep	Oct	Nov	Dec
<b>TOTAL - SEA</b>												
2020	8611	8550	8504	8879	8853	8873	8735	9036	8999	8996	9053	8845
2021	8759	8876	8860	8916	8968	8976	8503					
<b>Civil - SEA</b>												
2020	5165	5043	5033	5217	5218	5189	5043	5191	5128	5131	5153	5074
2021	4932	5028	4993	5019	5028	4991	4650					
<b>Domestic - SEA</b>												
2020	2580	2596	2571	2694	2647	2669	2657	2789	2816	2778	2755	2612
2021	2584	2590	2583	2581	2612	2634	2518					
<b>Probate - SEA</b>												
2020	485	513	515	566	572	582	622	623	620	639	678	700
2021	742	747	782	807	832	839	837					
<b>Guardianship - SEA</b>												
2020	157	162	146	143	158	163	162	172	175	191	196	184
2021	210	231	221	230	226	236	231					
<b>Adoption - SEA</b>												
2020	140	152	151	164	158	165	152	161	172	180	193	182
2021	193	187	185	185	183	189	179					
<b>Parentage - SEA</b>												
2020	84	84	88	95	100	105	99	100	88	77	78	93
2021	98	93	96	94	87	87	88					

MRJC	Jan	Feb	Mar	Apr	May	Jun	Jul	Aug	Sep	Oct	Nov	Dec
<b>TOTAL - MRJC</b>												
2020	5116	5168	5161	5283	5232	5230	5158	5348	5317	5332	5312	5240
2021	5273	5340	5426	5422	5423	5480	5048					
<b>Civil - MRJC</b>												
2020	2702	2755	2754	2802	2750	2747	2691	2723	2725	2733	2741	2747
2021	2741	2778	2773	2767	2777	2801	2398					
<b>Domestic - MRJC</b>												
2020	1867	1840	1830	1885	1856	1842	1825	1957	1957	1932	1914	1833
2021	1823	1821	1863	1855	1845	1852	1817					
<b>Probate - MRJC</b>												
2020	236	252	263	287	279	287	294	316	303	321	329	323
2021	355	390	419	429	435	452	467					
<b>Guardianship - MRJC</b>												
2020	96	99	94	89	111	122	116	110	106	110	108	106
2021	113	115	130	129	118	114	118					
<b>Adoption - MRJC</b>												
2020	64	68	69	67	71	69	69	72	65	66	71	76
2021	78	80	84	86	88	91	84					
<b>Parentage - MRJC</b>												
2020	151	154	151	153	165	163	163	170	161	160	149	155
2021	163	156	157	156	160	170	164					

SEA/MRJC	Jan	Feb	Mar	Apr	May	Jun	Jul	Aug	Sep	Oct	Nov	Dec
2020	13727	13718	13665	14162	14085	14103	13893	14384	14316	14318	14365	14085
2021	14032	14216	14286	14338	14391	14456						

Pending caseload = cases remain active and unresolved at the end of reporting period, excluding cases on suspense status (in arbitration, appeal).

“Civil” includes all civil actions (including RALJ), except “Matters Filed with Clerk” (Petition for Order Granting Judgment on Confession of Judgment, Tax Warrants, Abstract of Judgment, Foreign Judgment, and Transcript of Judgment), Domestic, Probate, Guardianship, Adoption, and Parentage cases.

Table 5. Age of Pending Cases

SEA	Jul 2020	Aug 2020	Sep 2020	Oct 2020	Nov 2020	Dec 2020	Jan 2021	Feb 2021	Mar 2021	Apr 2021	May 2021	Jun 2021	Jul 2021
<b>Civil – SEA</b>													
Median Age (50 <sup>th</sup> percentile) *	189	201	206	208	201	200	196	196	195	198	200	199	192
<b># of Cases in Age Interval</b>													
0 - 120 days (0 - 4 months)	1606	1696	1713	1813	1840	1757	1702	1720	1725	1775	1789	1733	1635
121 - 240 days (5 - 8 months)	1429	1338	1239	1082	1026	1068	1080	1156	1127	1092	1063	1078	1020
241 - 360 days (9 - 12 months)	982	1058	1038	1011	981	891	799	741	685	710	731	750	688
361 - 540 days (13 - 18 months)	646	653	660	705	723	746	720	780	762	691	671	633	582
541 - 720 days (19 - 24 months)	239	282	311	322	356	364	361	327	369	411	398	417	403
> 720 days (> 24 months)	141	164	167	198	227	248	270	304	325	340	376	380	322
<b>Domestic – SEA</b>													
Median Age (50 <sup>th</sup> percentile) *	163	171	147	138	140	150	158	158	156	148	144	142	143
<b># of Cases in Age Interval</b>													
0 - 120 days (0 - 4 months)	1055	1159	1283	1273	1218	1092	1033	1020	1085	1158	1167	1196	1108
121 - 240 days (5 - 8 months)	701	683	608	556	612	654	706	737	671	584	569	561	571
241 - 360 days (9 - 12 months)	425	419	423	425	402	371	331	307	334	366	399	393	347
361 - 540 days (13 - 18 months)	269	279	267	271	256	225	244	254	219	191	192	197	188
> 540 days (> 18 months)	207	249	235	253	267	270	270	272	274	282	285	287	304
<b>Probate – SEA</b>													
Median Age (50 <sup>th</sup> percentile) *	241	266	295	297	289	270	256	279	271	271	281	296	314
<b># of Cases in Age Interval</b>													
0 - 120 days (0 - 4 months)	234	221	203	207	228	229	256	229	251	256	256	251	232
121 - 240 days (5 - 8 months)	77	80	79	84	91	102	101	120	119	120	132	124	123
241 - 360 days (9 - 12 months)	58	53	61	61	54	64	67	73	78	85	79	93	98
361 - 540 days (13 - 18 months)	53	61	65	61	71	64	71	66	65	73	82	85	85
> 540 days (> 18 months)	200	208	212	226	234	241	247	259	269	273	283	286	299
<b>Guardianship – SEA</b>													
Median Age (50 <sup>th</sup> percentile) *	150	103	118	115	134	191	173	144	181	183	214	197	243
<b># of Cases in Age Interval</b>													
0 - 120 days (0 - 4 months)	74	92	88	96	94	75	92	111	96	101	92	89	81
121 - 240 days (5 - 8 months)	18	24	27	30	30	31	35	31	30	26	27	35	34
241 - 360 days (9 - 12 months)	13	3	6	11	17	24	24	26	27	29	28	26	23
361 - 540 days (13 - 18 months)	8	6	5	5	6	4	9	12	16	22	28	35	36
> 540 days (> 18 months)	49	47	49	49	49	50	50	51	52	52	51	51	57
<b>Adoption – SEA</b>													
Median Age (50 <sup>th</sup> percentile) *	295	256	241	246	197	272	223	251	265	256	298	283	356
<b># of Cases in Age Interval</b>													
0 - 120 days (0 - 4 months)	43	53	65	70	84	73	78	70	63	61	57	58	47
121 - 240 days (5 - 8 months)	30	26	21	19	15	16	21	23	28	31	28	28	24
241 - 360 days (9 - 12 months)	13	14	13	14	19	16	12	7	7	9	12	16	20
361 - 540 days (13 - 18 months)	12	11	16	18	15	14	17	20	15	11	12	12	11
> 540 days (> 18 months)	54	57	57	59	60	63	65	67	72	73	74	73	77
<b>Parentage – SEA</b>													
Median Age (50 <sup>th</sup> percentile) *	163	179	154	136	143	106	102	123	133	139	174	155	155
<b># of Cases in Age Interval</b>													
0 - 120 days (0 - 4 months)	34	33	36	36	37	50	54	44	45	44	35	40	40
121 - 240 days (5 - 8 months)	35	39	23	16	15	16	17	22	26	22	23	14	11
241 - 360 days (9 - 12 months)	13	11	10	12	10	12	10	7	6	10	9	15	16
361 - 540 days (13 - 18 months)	11	10	10	5	7	6	8	10	8	8	9	7	6
> 540 days (> 18 months)	6	7	9	8	9	9	9	10	11	10	11	11	15

\*Age of active pending cases is time elapsed from filing date to the end of the reporting period, minus any suspense time (in appeal, stay, mediation, arbitration) if applicable. The “median age” indicates the age of half (50%) of the pending cases (half are more, half are less) than the number of days indicated in the table.

“Civil” includes all civil actions (including RALJ), except “Matters Filed with Clerk” (Petition for Order Granting Judgment on Confession of Judgment, Tax Warrants, Abstract of Judgment, Foreign Judgment, and Transcript of Judgment), Domestic, Probate, Guardianship, Adoption, and Paternity cases.



Table 5. Age of Pending Cases (cont.)

MRJC	Jul 2020	Aug 2020	Sep 2020	Oct 2020	Nov 2020	Dec 2020	Jan 2021	Feb 2021	Mar 2021	Apr 2021	May 2021	Jun 2021	Jul 2021
<b>Civil - MRJC</b>													
Median Age (50 <sup>th</sup> percentile) *	176	186	203	206	208	203	206	208	205	206	215	223	199
<b># of Cases in Age Interval</b>													
0 - 120 days (0 - 4 months)	899	948	949	961	938	953	972	959	1001	972	951	904	824
121 - 240 days (5 - 8 months)	818	766	670	609	531	569	555	583	521	527	542	557	533
241 - 360 days (9 - 12 months)	401	412	495	534	581	518	461	417	346	380	363	376	264
361 - 540 days (13 - 18 months)	361	349	309	301	330	315	343	407	481	434	437	442	344
541 - 720 days (19 - 24 months)	148	162	197	219	232	234	229	217	191	194	202	211	200
> 720 days (> 24 months)	64	86	105	109	129	158	181	195	233	260	282	311	233
<b>Domestic- MRJC</b>													
Median Age (50 <sup>th</sup> percentile) *	179	187	174	145	153	162	166	165	167	165	153	154	153
<b># of Cases in Age Interval</b>													
0 - 120 days (0 - 4 months)	649	751	841	856	792	725	688	685	759	781	796	772	753
121 - 240 days (5 - 8 months)	493	444	376	357	392	437	488	485	439	416	390	395	423
241 - 360 days (9 - 12 months)	287	321	326	314	291	229	186	196	215	243	262	272	236
361 - 540 days (13 - 18 months)	185	209	195	181	208	206	212	199	188	150	135	139	124
> 540 days (> 18 months)	211	232	219	242	231	236	249	256	262	265	262	274	281
<b>Probate - MRJC</b>													
Median Age (50 <sup>th</sup> percentile) *	239	264	297	300	299	325	283	237	225	220	231	225	234
<b># of Cases in Age Interval</b>													
0 - 120 days (0 - 4 months)	90	103	92	104	111	93	125	146	159	162	162	163	155
121 - 240 days (5 - 8 months)	60	48	40	35	36	44	42	50	61	59	59	68	82
241 - 360 days (9 - 12 months)	30	45	44	48	40	33	32	30	29	36	36	41	42
361 - 540 days (13 - 18 months)	16	21	26	29	33	43	45	47	47	42	42	38	41
> 540 days (> 18 months)	98	99	101	41	109	110	111	117	123	130	136	142	147
<b>Guardianship - MRJC</b>													
Median Age (50 <sup>th</sup> percentile) *	155	130	161	167	197	228	223	200	141	169	211	243	266
<b># of Cases in Age Interval</b>													
0 - 120 days (0 - 4 months)	51	54	43	46	43	41	52	53	62	54	45	37	37
121 - 240 days (5 - 8 months)	24	25	28	21	18	14	5	6	12	18	17	18	18
241 - 360 days (9 - 12 months)	8	5	9	17	21	24	24	18	13	10	3	6	10
361 - 540 days (13 - 18 months)	7	5	5	4	4	4	8	13	18	22	27	27	24
> 540 days (> 18 months)	26	21	21	6	22	23	24	25	25	25	26	26	29
<b>Adoption - MRJC</b>													
Median Age (50 <sup>th</sup> percentile) *	466	442	528	544	497	488	509	495	490	488	487	492	548
<b># of Cases in Age Interval</b>													
0 - 120 days (0 - 4 months)	9	12	8	10	13	16	19	23	23	19	18	17	12
121 - 240 days (5 - 8 months)	11	10	8	6	4	5	4	4	8	13	16	19	14
241 - 360 days (9 - 12 months)	11	7	7	6	8	9	7	5	3	3	3	4	7
361 - 540 days (13 - 18 months)	12	14	11	11	12	12	12	11	12	10	8	9	8
> 540 days (> 18 months)	26	29	31	22	34	34	36	37	38	41	43	42	43
<b>Parentage - MRJC</b>													
Median Age (50 <sup>th</sup> percentile) *	190	198	206	142	155	158	150	147	149	138	137	150	146
<b># of Cases in Age Interval</b>													
0 - 120 days (0 - 4 months)	39	61	64	68	63	58	63	66	72	74	66	68	68
121 - 240 days (5 - 8 months)	71	49	41	29	28	41	52	47	44	41	47	53	53
241 - 360 days (9 - 12 months)	34	39	35	37	27	22	18	14	12	16	24	24	20
361 - 540 days (13 - 18 months)	15	17	18	18	24	26	24	23	21	16	13	14	11
> 540 days (> 18 months)	4	4	3	24	7	8	6	6	8	9	10	11	12

\*Age of active pending cases is time elapsed from filing date to the end of the reporting period, minus any suspense time (in appeal, stay, mediation, arbitration) if applicable. The "median age" indicates the age of half (50%) of the pending cases (half are more, half are less) than the number of days indicated in the table.

"Civil" includes all civil actions (including RALJ), except "Matters Filed with Clerk" (Petition for Order Granting Judgment on Confession of Judgment, Tax Warrants, Abstract of Judgment, Foreign Judgment, and Transcript of Judgment), Domestic, Probate, Guardianship, Adoption, and Parentage cases.

Table 6. SEA/MRJC Filings, Resolutions, and Pending Caseload as a Percentage of All Cases

	Jul 2020	Aug 2020	Sep 2020	Oct 2020	Nov 2020	Dec 2020	Jan 2021	Feb 2021	Mar 2021	Apr 2021	May 2021	Jun 2021	Jul 2021
<b>Total Filings</b>													
SEA - # of Cases Filed	1575	1540	1547	1587	1495	1515	1473	1490	1734	1626	1467	1638	1501
MRJC - # of Cases Filed	916	915	871	941	731	850	875	893	1072	924	855	907	959
SEA %	63%	63%	64%	63%	67%	64%	63%	63%	62%	64%	63%	64%	61%
MRJC %	37%	37%	36%	37%	33%	36%	37%	37%	38%	36%	37%	36%	39%
<b>Total Resolutions</b>													
SEA - # of Cases Resolved	1479	1504	1485	1538	1429	1722	1467	1436	1729	1504	1418	1682	1738
MRJC - # of Cases Resolved	859	860	848	876	762	944	760	868	957	923	819	918	1275
SEA %	63%	64%	64%	64%	65%	65%	66%	62%	64%	62%	63%	65%	58%
MRJC %	37%	36%	36%	36%	35%	35%	34%	38%	36%	38%	37%	35%	42%
<b>Total Pending Cases</b>													
SEA - # of Cases Pending	8735	9036	8999	8996	9053	8845	8759	8876	8860	8916	8968	8976	8503
MRJC - # of Cases Pending	5158	5348	5317	5322	5312	5240	5273	5340	5426	5422	5423	5480	5048
SEA %	63%	63%	63%	63%	63%	63%	62%	62%	62%	62%	62%	62%	63%
MRJC %	37%	37%	37%	37%	37%	37%	38%	38%	38%	38%	38%	38%	37%

All civil actions (including RALJ), except "Matters Filed with Clerk" (Petition for Order Granting Judgment on Confession of Judgment, Tax Warrants, Abstract of Judgment, Foreign Judgment, and Transcript of Judgment), Domestic, Probate, Guardianship, Adoption, and Parentage cases.

## Appendix Glossary and Definition

### **Active Status**

A case is active if it is not on suspense status (see Suspense Status).

### **Adoption and Parentage Cases (case type 5)**

ADP - Adoption  
CFI - Confidential Intermediary  
CHN - Confidential Change of Name  
DIP - Disestablishment of Parentage  
MDS - Modification/Support Only  
MOD - Modification  
MSC - Miscellaneous  
OAA - Open Adoption Agreement  
PAD - De Facto Parentage  
PAG - Pre Birth Establish Parentage Genetic  
PAS - Establish Parentage Gestational Surrogacy  
PAT - Parentage  
PPR - Initial Pre Placement Report  
PRC - Parentage Rescission/Challenge  
PUR - Parentage (URES/UIFSA)  
REL - Relinquishment  
ROB - Relocation Objection  
TER - Termination of Parental Rights

### **Case**

A case is defined as a filing with an assigned case number.

### **Civil Cases (case type 2, no RALJ)**

ALR - Administrative Law Review  
ALRLI - L&I Administrative Law Review  
AOD - Assurance of Discontinuance  
ASB - Asbestos  
ASP - Asbestos Personal Injury  
ASW - Asbestos Wrongful Death  
BAT - Petition to Appeal/Amend Ballot Title  
CAA - Motion to Confirm/Compel Arbitration Award  
CFJ - Petition for Order Granting Judgment on Confession of Judgment  
CHN - Non Confidential Change of Name  
COL - Collection  
COM - Commercial  
CON - Condemnation  
CRP - Certificate of Restoration of Opportunity  
CRR - Petition for Certificate of Rehabilitation  
DOL - Appeal Licensing Revocation  
DSF - Notice of Deposit of Surplus Funds from Trustee's Sale of Real Property  
DVP - Domestic Violence  
ECP - Enforcement of Canadian Protection Order  
EOM - Emancipation of Minor  
FOR - Foreclosure  
FPO - Foreign Protection Order  
FVL - Motion to Show Cause /Fruivolous Lien  
HAR - Unlawful Harassment  
HSI - Application for Health & Safety Inspection  
INJ - Injunction  
IPL - Complaint for Interpleader  
LUP - Land Use Petition  
MAL - Other Malpractice  
MED - Medical Malpractice  
MER - Meretricious Relationships  
MHA - Malicious Harassment  
MSC - Miscellaneous  
MST - Minor Settlement  
MWP - Minor Work Permit  
NJF - Non Judicial Filing  
OSS - Petition to Issue Out of State Subpoena  
PBC - Petition for Birth Certificate Change  
PBJ - Petition for Justification /Bail Bond Company  
PCC - Petition for Civil Commitment  
PFA - Property Fairness Act  
PIN - Personal Injury  
PPT - Petition for Perpetuation of Testimony  
PRA - Public Records Act

PRG - Property Damage /Gangs  
PRP - Property Damage  
PVO - Petition for Vehicle Ownership  
QTI - Quiet Title  
RCV - Petition to Appoint Receiver  
RDR - Relief from Duty to Register  
RFR - Restoration of Firearms Rights  
RRC - Remove Restricted Covenant  
SCA - Small Claims Appeal  
SDR - School District /Required Action Plan  
SER - Subdivision Election Process Law Review  
SPC - Seizure of Property From Commission of a Crime  
SPR - Seizure of Property Resulting From a Crime  
STK - Stalking Protection  
SXP - Sexual Assault Protection  
TMV - Tort /Motor Vehicle  
TSS - Petition for Approval of Transfer of Structured Settlement  
TTO - Tort /Other  
UND - Unlawful Detainer  
VAP - Vulnerable Adult Protection Order  
VEP - Voter Election Process Law Review  
VVT - Victims of Motor Vehicle Theft /Civil Action  
WDE - Wrongful Death  
WHC - Writ of Habeas Corpus  
WMW - Miscellaneous Writs  
WRM - Writ of Mandamus  
WRR - Writ of Restitution  
WRV - Writ of Review  
XRP - Extreme Risk Protection Order

### **Completion**

A case is completed if dispositive document is filed with the court following resolution.

### **Domestic Cases (case type 3)**

CIR - Committed Intimate Relationship  
CUS - Child Custody  
DIC - Dissolution w/ Children  
DIN - Dissolution no Children  
DIS - Dissolution  
DPC - Dissolution of Domestic Partnership w/ Children  
DPN - Dissolution of Domestic Partnership /No Children  
FIU - Out of State Support Registration /Foreign Judgment  
INC - Annulment /Inv of Marriage w/ Children  
IND - Annulment /Inv of Domestic Partnership w/ Children  
INP - Invalidity, Domestic Partnership  
INV - Annulment /Invalidity  
MDS - Modification/Support Only  
MOD - Modification  
MSC - Miscellaneous  
MWA - Mandatory Wage Assignment  
OSC - Out of State Custody  
PPS - Parenting Plan / Child Support  
PSO - Petition for Entry of KC Support Order  
RCV - Relative Child Visitation  
RIC - Reciprocal, Resp in County  
ROB - Relocation /Objection  
ROC - Reciprocal, Resp out of County  
RVC - Relative Child Visits  
SDC - Legal Separation, Domestic Partnership w/ Children  
SEC - Legal Separation w/ Children  
SEP - Legal Separation  
SPD - Legal Separation, Domestic Partnership /No Children  
TSS - Structured Settlement  
EFC - Extended Foster Care, Dependency  
GFC - Guardianship Foster Children  
RPR - Reinstatement of Parental Rights  
RVS - Relative Visitation  
TRU - Truancy  
VYG - Vulnerable Youth Guardianship

### ***Probate and Guardianship Cases (case type 4)***

ABS - Absentee  
AOS - Affidavit of Successor  
ASE - Affidavit of Small Estate  
DSC - Disclaimer  
EST - Estate  
FNW - Foreign Will  
G/E - Guardianship/Estate  
GDE - Guardianship of the Estate  
GDN - Guardianship  
GDP - Guardianship of the Person  
LGD - Limited Guardianship  
LGE - Limited Guardianship of the Estate  
LGP - Limited Guardianship of the Person  
MGD - Minor Guardianship  
MSC - Miscellaneous  
MST - Minor Settlement  
NJB - Non Judicial Binding/TEDRA Agreement  
NNC - Non Probate Notice to Creditor  
POA - Petition for Relief (RCW 11.94) /Power of Attorney  
RGR - Registration of Guardianship  
RTR - Registration of Trust /Trust Situs  
SNT - Special Needs Trust  
TDR - Trust/Estate Dispute Resolution  
TRS - Trust  
WLL - Will Only

### ***Resolution***

A case is resolved if all issues in the complaint are fully adjudicated.

### ***Suspended Case***

A case is placed in suspense status from active status during the reporting period.

### ***Suspense Status***

A case is on suspense status if it is on warrant, appeal, stay, mediation, arbitration ("Deferred Prosecution" is not a suspense status, but is treated as a resolution).