



King County

Department of Judicial Administration

Barbara Miner

Director and Superior Court Clerk

(206) 296-9300 (206) 296-0100 TTY/TDD

King County Superior Court

Criminal Department Statistical Report

September 2020

Department of Judicial Administration

Prepared by: Shiquan Liao, Ph.D., Statistician

October 15, 2020

Report #: CRM-2020-09

Seattle:

516 Third Avenue Room E609
Seattle, WA 98104-2386

Regional Justice Center:

401 Fourth Avenue North Room 2C
Kent, WA 98032-4429

Juvenile Division:

1211 East Alder Room 3015
Seattle, WA 98122-5598

Criminal Statistics Summary

NOTE: Washington State Supreme Court orders related to the coronavirus pandemic, beginning March 2020, affect the statistics for the foreseeable future.

- **Filings**

As shown in the first chart on page 4, the monthly filings vary considerably from month to month. A total of 498 criminal cases were filed in September 2020. Of the 498 cases filed, 39% were MRJC cases. The year-to-date average filing volume in 2020 was 489 cases per month, compared with 515, 511, 519, 532, 535, 562, 548, 523 and 563 cases per month in 2011, 2012, 2013, 2014, 2015, 2016, 2017, 2018 and 2019, respectively.

- **Resolutions**

Like the monthly filings, the number of criminal cases resolved per month also varies from month to month (monthly resolution pattern is shown on page 4). The number of resolutions in September 2020 was 358 cases. Of the 358 cases resolved, 38% were MRJC cases. The year-to-date average resolution volume in 2020 was 342 cases per month, compared with 539, 481, 502, 514, 549, 506, 525, 481 and 494 cases per month in 2011, 2012, 2013, 2014, 2015, 2016, 2017, 2018 and 2019, respectively.

- **Pending Caseload**

At the end of September 2020, the active pending criminal caseload is 5,736 cases, including criminal RALJ cases, higher than that in the previous months. Of the 5,736 pending criminal cases, 39% are MRJC cases. The breakdown of the 5,736 pending cases by crime category was: homicide (n=154), sex crime (n=559), robbery (n=286), aggravated assault (n=1089), burglary/theft (n=1568), motor vehicle theft (n=162), controlled substances – non-drug court (n=769), drug court (n=265), other felonies (n=807), and RALJ (n=77). **The increase in pending caseload is primarily due to the COVID-19 pandemic causing the court to issue many fewer bench warrants and to postpone jury trials, thus keeping these cases in pending active status.**

- **Age of Pending Cases**

The median age (age for half of the pending cases) of pending cases are shown in Table 6. The median age of all active pending cases (excluding RALJ) at the end of September 2020 was 178 days. At the end of September 2020, 1459 non-drug court cases and 196 drug court cases still remained as active (unresolved) more than nine months since filing. Table 6 shows the number of active pending cases within pre-defined age intervals.

Conclusion: The average monthly filings of criminal cases were 489 cases in 2020. The resolution pace was lower than the filing pace in the same time period, with an average of 342 cases per month. The pending caseload (including RALJ) for both SEA and the MRJC was 5,736 cases at the end of September 2020. The pending caseload at the MRJC were 2,216 cases (including 65 drug court cases) at the end of September 2020. About 39% of the total pending criminal cases were the MRJC cases.

Terminology

Age of Pending Case

Time (days) from filing to resolution, less suspense time if applicable.

Age of Resolved Case

Time (days) from filing to resolution, less suspense time if applicable.

End Pending

Number of pending cases at the end of reporting period.

Net Change in Pending

The change in number of pending cases (end pending minus previous pending).

Pending Case

A case is defined as pending if it is unresolved and not on suspense status.

Previous Pending

Number of pending cases at the beginning of reporting period.

Reactivated Case

A case returns to active from suspense status during the reporting period.

Resolution

A case is resolved if all issues in the complaint are fully adjudicated. However, a drug court case is reported as resolved only when dispositive document is also filed (completed).

Resolution Category

Five resolution categories are used to report resolution of criminal cases: jury trial (CVJV, AQJV), non-jury trial (CVCT, AQCT), guilty plea (GP, GPAT, GPJT), dismissal (DSM), and other (all other resolution codes). For criminal RALJ cases, the resolution categories are: RALJ decision (CDTA, CDTM, CDTR), dismissal (DSRM), and others (any other resolution codes).

Suspended Case

A case is placed in suspense status (removing from active) during the reporting period.

Suspense Status

A case is said to be on suspense status if it is on warrant or appeal.

Suspense Time

Time (days) a case is on suspense status.

Figure 1. Number of Criminal Filings, Resolutions and Pending Caseload by Month

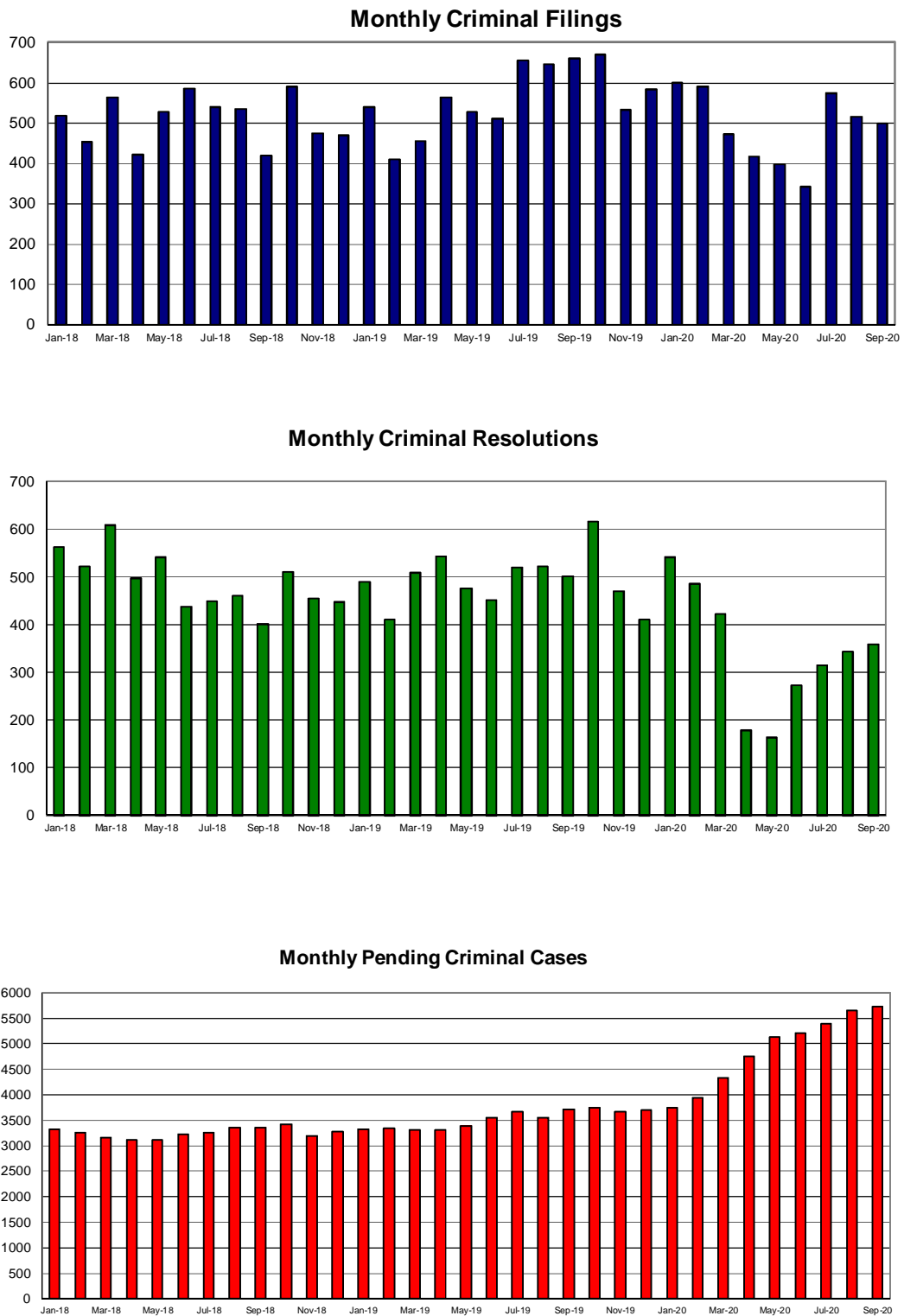


Figure 2. Crime Category as a Percentage of Total Filings by Year

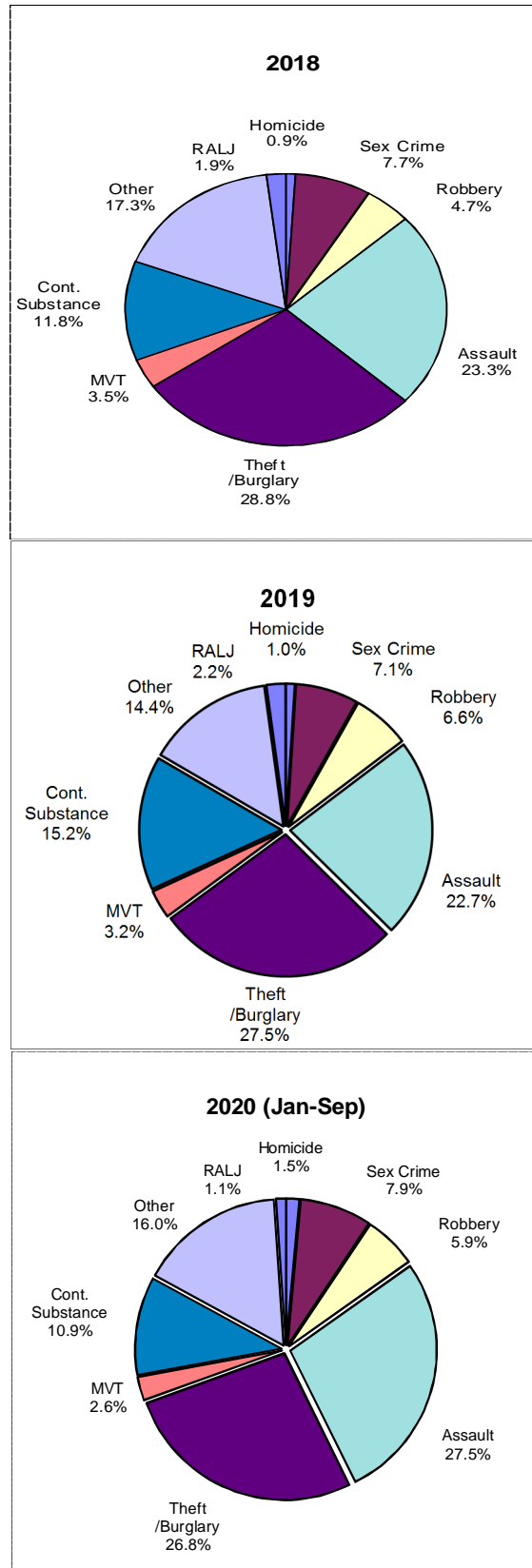


Table 1. Monthly Criminal New Filings by Crime Category (*)
King County Superior Court

	Jan	Feb	Mar	Apr	May	Jun	Jul	Aug	Sep	Oct	Nov	Dec
Total												
2017	8	486	629	582	583	591	506	593	510	600	520	460
2018	519	452	564	423	528	586	541	534	419	591	474	471
2019	540	409	455	564	527	511	655	646	660	670	532	584
2020	599	591	472	416	397	342	573	516	498			
Homicide												
2017	7	2	1	5	2	7	3	9	5	5	6	5
2018	6	2	6	7	6	2	4	1	3	9	3	8
2019	4	6	3	4	4	9	10	5	2	9	4	8
2020	4	3	4	7	7	14	8	9	9			
Sex Crime												
2017	15	27	24	44	55	24	27	46	27	32	22	37
2018	36	30	43	31	34	44	42	38	40	49	41	42
2019	42	30	36	43	39	33	37	50	44	42	31	54
2020	35	45	36	42	45	21	38	26	59			
Robbery												
2017	16	22	28	17	23	18	20	14	14	15	16	15
2018	25	15	18	17	30	16	20	25	30	35	27	29
2019	44	39	40	35	33	21	46	33	43	31	36	42
2020	39	31	23	28	28	27	33	21	29			
Aggravated Assault												
2017	115	105	146	125	128	136	117	148	132	143	112	98
2018	117	117	110	107	126	140	134	147	93	113	115	106
2019	122	109	114	127	140	105	143	161	123	139	116	134
2020	141	148	129	137	114	111	132	162	135			
Burglary/Theft /Larceny												
2017	173	164	190	167	166	160	140	142	139	170	155	146
2018	157	148	181	111	151	158	147	132	119	189	123	143
2019	157	101	132	146	143	136	160	208	207	182	132	155
2020	156	141	110	89	99	91	201	153	140			
Motor Vehicle Theft												
2017	16	11	18	22	11	21	12	20	13	19	16	18
2018	21	24	31	10	14	16	11	16	9	26	13	20
2019	19	8	15	21	20	15	25	18	17	26	20	15
2020	14	14	13	3	10	12	11	27	11			
Controlled Substance												
2017	79	80	91	79	92	99	79	109	80	109	90	45
2018	47	42	41	37	64	93	66	65	52	84	81	51
2019	61	30	25	89	61	104	128	82	138	135	97	79
2020	99	110	74	18	19	16	77	25	40			
Other												
2017	93	69	114	109	87	107	101	95	91	94	93	85
2018	99	69	120	98	96	104	109	100	57	79	61	61
2019	72	76	77	89	76	82	98	81	69	92	87	76
2020	101	82	76	89	75	47	70	93	70			
Criminal RALJ												
2017	1	6	17	14	19	19	7	10	9	13	10	11
2018	11	5	14	5	7	13	8	10	16	7	10	11
2019	19	10	13	10	11	6	8	8	17	14	9	21
2020	10	17	7	3	0	3	3	0	5			
KNT Filing as % of Total												
2017	48%	44%	45%	42%	46%	41%	40%	47%	48%	44%	46%	44%
2018	44%	44%	41%	45%	43%	41%	46%	37%	35%	40%	41%	40%
2019	38%	42%	44%	41%	35%	41%	35%	44%	37%	37%	35%	37%
2020	41%	36%	38%	42%	37%	43%	45%	46%	39%			

(*) The highest crime category in a case's history is used to classify cases. For example, a case charged with homicide at any time in the case's history is reported as a homicide regardless of whether the charge is reduced at resolution.

Table 2. Monthly Criminal Case Resolutions by Crime Category
King County Superior Court

	Jan	Feb	Mar	Apr	May	Jun	Jul	Aug	Sep	Oct	Nov	Dec
Total												
2017	480	509	596	461	565	546	434	589	529	614	541	429
2018	562	523	609	497	542	437	450	460	402	510	454	447
2019	489	411	508	543	477	451	521	523	501	617	470	411
2020	541	485	423	178	163	272	315	343	358			
Homicide												
2017	3	4	2	4	6	2	4	4	4	6	6	1
2018	6	5	8	3	3	1	2	3	3	2	4	6
2019	3	8	6	4	7	6	6	5	8	7	8	10
2020	5	2	5	2	0	1	1	1	1			
Sex Crime												
2017	37	34	37	18	37	31	23	36	34	35	34	32
2018	39	31	39	19	31	29	21	36	34	47	40	28
2019	39	32	51	48	34	35	33	48	41	37	25	17
2020	37	32	17	14	10	8	27	25	28			
Robbery												
2017	22	24	28	20	20	20	13	25	23	26	17	17
2018	13	21	20	27	20	16	24	18	34	40	31	26
2019	24	30	37	43	44	28	53	34	38	33	34	30
2020	36	33	27	11	10	17	21	25	26			
Aggravated Assault												
2017	116	104	147	108	105	111	108	108	118	137	141	107
2018	146	116	151	125	111	115	101	135	90	136	124	118
2019	118	96	137	127	116	93	121	114	119	161	127	98
2020	131	138	103	48	40	72	73	108	109			
Burglary/Theft /Larceny												
2017	127	157	158	128	171	180	121	171	129	169	150	104
2018	143	151	161	125	164	119	137	119	112	111	131	115
2019	136	103	115	132	118	114	139	125	136	164	110	124
2020	146	102	113	26	28	66	61	64	72			
Motor Vehicle Theft												
2017	14	18	13	10	18	14	10	12	18	14	15	15
2018	12	11	13	18	17	10	12	7	14	12	18	15
2019	16	14	20	17	11	12	18	17	13	13	11	16
2020	15	7	12	0	4	8	2	4	11			
Controlled Substance – Non Drug Court												
2017	51	65	71	66	71	82	57	100	76	90	58	62
2018	79	99	73	28	80	56	64	44	45	51	33	65
2019	59	43	49	70	46	51	48	78	59	74	44	45
2020	74	61	55	12	16	26	35	41	26			
Drug Court												
2017	31	23	28	18	39	19	16	21	25	31	31	17
2018	33	11	26	55	27	15	6	19	16	20	8	8
2019	20	18	24	13	14	38	23	16	17	19	31	6
2020	21	30	22	20	21	12	18	7	29			
Other												
2017	69	71	101	79	85	76	76	100	88	94	78	64
2018	81	58	108	87	73	64	76	67	46	84	63	54
2019	57	56	62	74	77	67	74	73	63	91	65	57
2020	66	71	66	32	21	49	63	50	48			
Criminal RALJ												
2017	10	9	11	10	13	11	6	12	14	12	11	10
2018	11	20	10	10	16	12	7	12	8	7	2	12
2019	17	11	7	15	10	7	6	13	7	18	15	8
2020	10	9	3	13	13	13	14	18	8			
KNT as % of Total												
2017	43%	40%	42%	45%	43%	43%	41%	40%	42%	44%	47%	44%
2018	43%	35%	45%	42%	42%	40%	40%	44%	43%	39%	37%	39%
2019	44%	42%	39%	37%	44%	40%	42%	40%	43%	44%	38%	41%
2020	44%	41%	38%	33%	39%	44%	41%	41%	38%			

The highest crime category in a case's history is used to classify cases. For example, a case charged with homicide at any time in the case's history is reported as a homicide regardless of whether the charge is reduced at resolution.

“Controlled Substance - Non Drug Court” are drug related cases that have never been accepted into drug court.

“Drug Court” are cases that have been formally accepted into drug court (identified by orders).

Table 3. Number of Cases Resolved and Resolution Category
King County Superior Court

Crime Category (*)	Sep 2019	Oct 2019	Nov 2019	Dec 2019	Jan 2020	Feb 2020	Mar 2020	Apr 2020	May 2020	Jun 2020	Jul 2020	Aug 2020	Sep 2020
Homicide	8	7	8	10	5	2	5	2	0	1	1	1	1
Resolved by Jury Trial	0	3	2	5	0	1	0	1	0	0	0	0	0
Resolved by Non-Jury Trial	0	0	0	0	0	0	1	0	0	0	0	0	0
Resolved by Guilty Plea	7	3	3	5	5	1	4	0	0	0	1	1	1
Dismissal	1	0	3	0	0	0	0	1	0	1	0	0	0
Others	0	1	0	0	0	0	0	0	0	0	0	0	0
Sex Crime	41	37	25	17	37	32	17	14	10	8	27	25	28
Resolved by Jury Trial	1	1	2	0	3	2	0	0	0	0	0	1	1
Resolved by Non-Jury Trial	0	0	0	0	0	0	0	0	0	0	0	0	0
Resolved by Guilty Plea	29	29	17	16	28	22	13	13	6	6	16	21	22
Dismissal	10	7	6	1	5	8	4	1	4	2	11	3	5
Others	1	0	0	0	1	0	0	0	0	0	0	0	0
Robbery	38	33	34	30	36	33	27	11	10	17	21	25	26
Resolved by Jury Trial	1	1	5	0	0	1	0	0	0	0	0	1	0
Resolved by Non-Jury Trial	0	0	0	0	0	0	0	0	0	0	0	0	0
Resolved by Guilty Plea	35	26	29	26	35	29	24	9	9	14	17	22	22
Dismissal	2	6	0	4	1	3	3	2	1	3	4	2	4
Others	0	0	0	0	0	0	0	0	0	0	0	0	0
Aggravated Assault	119	161	127	98	131	138	103	48	40	72	73	108	109
Resolved by Jury Trial	3	4	6	8	7	8	4	0	0	0	0	0	1
Resolved by Non-Jury Trial	0	0	1	0	0	0	0	0	0	0	0	0	0
Resolved by Guilty Plea	99	131	102	76	98	106	74	32	31	52	53	79	79
Dismissal	17	26	18	14	26	24	25	16	9	20	20	29	29
Others	0	0	0	0	0	0	0	0	0	0	0	0	0
Burglary/Theft/Larceny	136	164	110	124	146	102	113	26	28	66	61	64	72
Resolved by Jury Trial	1	4	4	3	2	3	1	0	0	0	0	0	1
Resolved by Non-Jury Trial	0	1	0	0	0	0	0	0	0	0	0	0	0
Resolved by Guilty Plea	127	127	90	102	125	78	83	17	19	56	44	44	57
Dismissal	8	32	16	19	19	21	29	9	9	10	17	20	14
Others	0	0	0	0	0	0	0	0	0	0	0	0	0
Motor Vehicle Theft	13	13	11	16	15	7	12	0	4	8	2	4	11
Resolved by Jury Trial	0	0	0	0	1	0	1	0	0	0	0	0	0
Resolved by Non-Jury Trial	0	0	0	0	0	0	0	0	0	0	0	0	0
Resolved by Guilty Plea	12	12	8	12	11	5	9	0	2	7	2	3	5
Dismissal	1	1	3	4	3	2	2	0	2	1	0	1	6
Others	0	0	0	0	0	0	0	0	0	0	0	0	0
Controlled Substance	59	74	44	45	74	61	55	12	16	26	35	41	26
Resolved by Jury Trial	0	1	0	0	0	0	0	0	0	0	0	0	0
Resolved by Non-Jury Trial	0	0	0	0	0	0	0	0	0	0	0	0	0
Resolved by Guilty Plea	44	51	30	34	50	51	34	9	4	20	21	27	19
Dismissal	15	22	14	11	23	10	21	3	12	6	14	14	7
Others	0	0	0	0	1	0	0	0	0	0	0	0	0
Drug Court	17	19	31	6	21	30	22	20	21	12	18	7	29
Resolved by Non-Jury Trial	1	0	2	3	0	6	4	3	0	7	4	0	4
Resolved by Guilty Plea	6	3	5	2	2	3	3	1	6	1	2	1	7
Dismissal	10	16	24	1	0	21	15	16	15	4	12	6	18
Others	0	0	0	0	19	0	0	0	0	0	0	0	0
Other	63	91	65	57	66	71	66	32	21	49	63	50	48
Resolved by Jury Trial	1	0	0	3	0	3	0	0	0	0	0	0	1
Resolved by Non-Jury Trial	0	0	0	0	1	0	0	0	0	0	0	0	0
Resolved by Guilty Plea	49	58	42	39	53	46	38	19	16	38	45	36	31
Dismissal	13	32	23	14	12	22	27	13	5	11	18	14	16
Others	0	1	0	1	0	0	1	0	0	0	0	0	0
Criminal RALJ	7	18	15	8	10	9	3	13	13	13	14	18	8
RALJ Decision	4	11	11	5	8	8	3	8	10	12	9	15	6
Dismissal	2	3	3	2	2	1	0	4	3	1	5	3	2
Others	1	4	1	1	0	0	0	1	0	0	0	0	0

The highest crime category in a case's history is used to classify cases. For example, a case charged with homicide at any time in the case's history is reported as a homicide regardless of whether the charge is reduced at resolution.

"Controlled Substance - Non Drug Court" are drug related cases that have never been accepted into drug court.

"Drug Court" are cases that have been formally accepted into drug court (identified by orders).

Table 4. Age (days) of Resolved Cases
King County Superior Court

Crime Category (*)	Sep 2019	Oct 2019	Nov 2019	Dec 2019	Jan 2020	Feb 2020	Mar 2020	Apr 2020	May 2020	Jun 2020	Jul 2020	Aug 2020	Sep 2020
All Resolutions	501	617	470	411	541	485	423	178	163	272	315	343	358
50% Cases Resolved by Day	123	101	125	108	123	136	90	108	92	130	162	181	202
Average Days to Resolution	174	179	210	215	202	196	200	223	189	190	211	210	267
Homicide (**)	8	7	8	10	5	2	5	2	0	1	1	1	1
50% Cases Resolved by Day	491	589	302	746	460	449	585	1102	--	356	406	924	390
Average Days to Resolution	473	691	422	650	621	449	699	1102	--	356	406	924	390
Sex Crime	41	37	25	17	37	32	17	14	10	8	27	25	28
50% Cases Resolved by Day	231	201	269	228	258	280	180	110	108	231	212	259	369
Average Days to Resolution	275	274	256	287	278	339	234	184	145	251	256	276	733
Robbery	38	33	34	30	36	33	27	11	10	17	21	25	26
50% Cases Resolved by Day	112	102	178	76	125	150	68	118	163	132	154	222	172
Average Days to Resolution	151	122	444	433	179	159	115	112	189	148	225	214	199
Aggravated Assault	119	161	127	98	131	138	103	48	40	72	73	108	109
50% Cases Resolved by Day	104	91	118	92	115	111	61	66	58	93	136	154	164
Average Days to Resolution	144	135	149	135	148	151	87	112	99	120	172	175	182
Burglary/Theft/Larceny	136	164	110	124	146	102	113	26	28	66	61	64	72
50% Cases Resolved by Day	109	103	84	95	112	117	96	71	53	146	153	154	162
Average Days to Resolution	152	167	121	229	142	153	158	163	125	197	182	193	193
Motor Vehicle Theft	13	13	11	16	15	7	12	0	4	8	2	4	11
50% Cases Resolved by Day	104	49	89	84	108	174	123	NA	185	180	198	268	253
Average Days to Resolution	137	104	95	176	126	242	174	NA	167	172	198	284	205
Controlled Substance	59	74	44	45	74	61	55	12	16	26	35	41	26
50% Cases Resolved by Day	117	102	111	109	118	116	98	96	9	133	197	189	250
Average Days to Resolution	158	152	110	132	296	159	119	150	64	190	216	207	229
Drug Court	17	19	31	6	21	30	22	20	21	12	18	7	29
50% Cases Resolved by Day	452	433	562	223	622	532	570	445	497	531	528	516	534
Average Days to Resolution	485	433	577	290	630	555	699	451	534	561	529	529	575
Other	63	91	65	57	66	71	66	32	21	49	63	50	48
50% Cases Resolved by Day	88	59	84	111	98	119	62	68	81	106	119	116	134
Average Days to Resolution	112	177	141	172	140	151	335	279	109	152	145	174	173
Criminal RALJ	7	18	15	8	10	9	3	13	13	13	14	18	8
50% Cases Resolved by Day	234	226	319	204	289	333	372	218	302	337	264	340	273
Average Days to Resolution	299	299	569	284	317	300	397	332	370	355	304	319	306

(*) The highest crime category in a case's history is used to classify cases. For example, a case charged with homicide at any time during the case's history is reported as a homicide regardless of whether the charge is reduced at resolution.

(**) Due to small number of resolutions in this category, the age statistics for homicides are expected to vary considerably.

"Controlled Substance - Non Drug Court" are drug related cases that have never been accepted into drug court.
"Drug Court" are cases that have been formally accepted into drug court (identified by orders).

Table 5. Pending Criminal Cases
King County Superior Court

Crime Category (*)	Sep 2019	Oct 2019	Nov 2019	Dec 2019	Jan 2020	Feb 2020	Mar 2020	Apr 2020	May 2020	Jun 2020	Jul 2020	Aug 2020	Sep 2020
Total													
Previous Pending	3547	3715	3755	3664	3704	3756	3937	4337	4760	5131	5209	5386	5653
New Filing	660	670	532	584	599	591	472	416	397	342	573	516	489
Resolved	501	617	470	411	541	485	423	178	163	272	315	343	358
End Pending	3715	3755	3664	3704	3756	3937	4337	4760	5131	5209	5386	5653	5736
Homicide													
Previous Pending	114	107	109	107	103	97	101	105	108	117	131	134	145
New Filing	2	9	4	8	4	3	4	7	7	14	8	9	9
Resolved	8	7	8	10	5	2	5	2	0	1	1	1	1
End Pending	107	109	107	103	97	101	105	108	117	131	134	145	154
Sex Crime													
Previous Pending	368	359	364	351	396	378	394	433	469	509	528	543	551
New Filing	44	42	31	54	35	45	36	42	45	21	38	26	59
Resolved	41	37	25	17	37	32	17	14	10	8	27	25	28
End Pending	359	364	351	396	378	394	433	469	509	528	543	551	559
Robbery													
Previous Pending	212	212	213	204	223	217	221	237	257	271	282	291	289
New Filing	43	31	36	42	39	31	23	28	28	27	33	21	29
Resolved	38	33	34	30	36	33	27	11	10	17	21	25	26
End Pending	212	213	204	223	217	221	237	257	271	282	291	289	286
Aggravated Assault													
Previous Pending	703	720	712	689	721	687	721	782	883	955	999	1026	1100
New Filing	123	139	116	134	141	148	129	137	114	111	132	162	135
Resolved	119	161	127	98	131	138	103	48	40	72	73	108	109
End Pending	720	712	689	721	687	721	782	883	955	999	1026	1100	1089
Burglary/Theft/Larceny													
Previous Pending	834	940	938	900	844	893	958	1076	1183	1315	1327	1417	1518
New Filing	207	182	132	155	156	141	110	89	99	91	201	153	140
Resolved	136	164	110	124	146	102	113	26	28	66	61	64	72
End Pending	940	938	900	844	893	958	1076	1183	1315	1327	1417	1518	1568
Motor Vehicle Theft													
Previous Pending	84	80	89	93	91	89	99	113	118	124	127	132	158
New Filing	17	26	20	15	14	14	13	3	10	12	11	27	11
Resolved	13	13	11	16	15	7	12	0	4	8	2	4	11
End Pending	80	89	93	91	89	99	113	118	124	127	132	158	162
Controlled Substance - Non Drug Court ⁽¹⁾													
Previous Pending	417	451	469	479	460	500	523	616	676	728	719	744	749
Resolved	59	74	44	45	74	61	55	12	16	20	35	41	26
End Pending	451	469	479	460	500	523	616	676	728	719	744	749	769
Drug Court ⁽²⁾													
Previous Pending	289	303	319	312	305	310	314	319	328	302	275	271	280
New Enrollment	30	24	37	19	21	27	5	0	0	14	24	24	7
Resolved	17	19	31	6	21	30	22	20	21	12	18	7	29
End Pending	303	319	312	305	310	314	319	328	302	275	271	280	265
Other													
Previous Pending	400	407	409	402	421	447	463	507	600	692	725	735	782
New Filing	69	92	87	76	101	82	76	89	75	47	70	93	70
Resolved	63	91	65	57	66	71	66	32	21	49	63	50	48
End Pending	407	409	402	421	447	463	507	600	692	725	735	782	807
Criminal RALJ													
Previous Pending	126	136	133	127	140	138	143	147	138	118	96	93	81
New Filing	17	14	9	21	10	17	7	3	0	3	3	0	5
Resolved	7	18	15	8	10	9	3	13	13	13	14	18	8
End Pending	136	133	127	140	138	143	147	138	118	96	93	81	77
Total Pending Caseload													
SEA (%)	61%	61%	60%	61%	62%	63%	63%	63%	63%	63%	62%	62%	61%
KNT (%)	40%	39%	40%	39%	38%	37%	37%	37%	37%	37%	38%	38%	39%

(*) Information from filing to the reporting time is used to determine crime category for pending cases. The category for a case in this table is the highest crime category since filing. For example, a case initially charged with homicide is reported as a homicide regardless of whether or not the charge is reduced since filing. On the other hand, if the charge for a case is upgraded later, then the reporting category in later reports will reflect the upgraded (higher) crime category.

Drug court cases are identified by orders.

Table 6. Age (days) of Pending Cases
King County Superior Court

Crime Category (*)	Sep 2019	Oct 2019	Nov 2019	Dec 2019	Jan 2020	Feb 2020	Mar 2020	Apr 2020	May 2020	Jun 2020	Jul 2020	Aug 2020	Sep 2020
All Pending (excl. RALJ)	3715	3755	3664	3704	3756	3937	4335	4760	5131	5209	5293	5572	5659
Median Days (50%tile)	95	94	101	105	108	103	105	115	125	137	150	181	178
Average Days	171	167	170	176	169	161	164	173	182	194	197	242	214
Homicide	107	109	107	103	97	101	105	108	117	131	134	145	154
Median Days (50%tile)	361	360	350	328	308	306	294	320	333	319	296	321	320
Average Days	418	396	401	384	386	389	376	391	402	383	396	400	402
Sex Crime	359	364	351	396	378	394	433	469	509	528	543	551	559
Median Days (50%tile)	159	164	173	145	146	143	152	167	170	186	196	208	212
Average Days	210	210	221	207	211	196	205	214	226	239	249	281	267
Robbery	212	213	204	223	217	221	237	257	271	282	291	289	286
Median Days (50%tile)	82	87	90	91	93	87	99	121	138	140	154	172	173
Average Days	128	129	129	121	127	126	135	148	161	171	177	198	201
Aggravated Assault	720	712	689	721	687	721	782	883	955	999	1026	1100	1089
Median Days (50%tile)	77	76	79	88	88	79	84	80	96	118	134	138	140
Average Days	125	121	124	125	128	118	126	133	147	156	165	178	174
Burglary/Theft/Larceny	940	938	900	844	893	958	1076	1183	1315	1327	1417	1518	1568
Median Days (50%tile)	76	76	82	96	92	82	83	99	113	131	144	180	157
Average Days	132	131	134	139	134	129	133	148	158	168	168	220	190
Motor Vehicle Theft	80	89	93	91	89	99	113	118	124	127	132	158	162
Median Days (50%tile)	51	49	61	70	67	78	95	121	126	118	139	170	146
Average Days	91	91	107	96	98	97	107	130	139	140	156	259	166
Controlled Substance	451	469	479	460	500	523	616	676	728	719	744	749	769
Median Days (50%tile)	70	57	66	90	93	92	79	98	116	141	155	196	205
Median Days (50%tile)	113	110	118	160	134	132	128	143	159	176	184	257	217
Drug Court	303	319	312	305	310	314	319	328	302	275	271	280	265
Median Days (50%tile)	383	386	370	379	366	351	328	357	377	378	378	491	398
Average Days	448	437	423	448	413	402	402	417	433	431	434	584	454
Other	407	409	402	421	447	463	507	600	692	725	735	782	807
Median Days (50%tile)	80	81	81	77	80	73	89	90	94	117	127	144	150
Average Days	145	122	126	120	122	114	125	129	135	173	166	194	178
Criminal RALJ	136	133	127	140	138	143	147	138	118	96	93	81	77
Median Days (50%tile)	212	224	191	174	156	156	179	203	226	209	262	271	304
Average Days	327	328	307	292	301	282	309	334	367	238	434	481	505

(*) The highest crime category in a case's history is used to classify cases. For example, a case charged with homicide at any time during the case's history is reported as a homicide regardless of whether the charge is reduced at resolution.

"Controlled Substance - Non Drug Court" are drug related cases that have never been accepted into drug court.
"Drug Court" are cases that have been formally accepted into drug court (identified by orders).

Table 7. Age Intervals of Pending Criminal Cases
King County Superior Court

Crime Category (*)	Sep 2019	Oct 2019	Nov 2019	Dec 2019	Jan 2020	Feb 2020	Mar 2020	Apr 2020	May 2020	Jun 2020	Jul 2020	Aug 2020	Sep 2020
Total # Cases	3715	3755	3664	3704	3756	3937	4335	4760	5131	5209	5386	5653	5736
0 - 120 days (0 - 4 months)	2093	2122	1999	2016	1982	2130	2375	2394	2464	2240	2090	1996	2106
121-180 days (5 - 6 months)	407	454	503	488	548	599	558	706	796	878	1069	789	743
181-270 days (7 - 9 months)	438	409	417	430	489	478	597	703	796	872	901	1090	1232
> 270 days (> 9 months)	777	770	745	770	737	730	805	957	1075	1219	1326	1778	1655
Homicide # Cases	107	109	107	103	97	101	105	108	117	131	134	145	154
0 - 120 days (0 - 4 months)	24	25	22	22	23	21	24	25	26	36	33	39	42
121-180 days (5 - 6 months)	5	11	14	9	5	10	13	8	9	11	13	12	11
181-270 days (7 - 9 months)	10	11	9	13	16	17	10	12	15	16	14	14	19
> 270 days (> 9 months)	68	62	62	59	53	53	58	63	67	68	74	80	82
Sex Crime # Cases	359	364	351	396	378	394	433	469	509	528	543	551	559
0 - 120 days (0 - 4 months)	148	150	139	182	158	169	191	177	192	185	171	154	155
121-180 days (5 - 6 months)	46	48	45	38	55	67	55	76	79	65	86	86	76
181-270 days (7 - 9 months)	66	61	63	62	56	51	66	81	85	100	92	93	101
> 270 days (> 9 months)	99	105	104	114	109	107	121	135	153	178	194	218	227
Robbery # Cases	212	213	204	223	217	221	237	257	271	282	291	289	286
0 - 120 days (0 - 4 months)	128	129	122	137	130	132	138	126	121	122	118	103	105
121-180 days (5 - 6 months)	27	28	28	37	35	34	38	54	62	45	46	48	42
181-270 days (7 - 9 months)	26	23	26	20	25	24	27	39	40	63	68	62	54
> 270 days (> 9 months)	31	33	28	29	27	31	34	38	48	52	59	76	85
Aggravated Assault # Cases	720	712	689	721	687	721	782	883	955	999	1026	1100	1089
0 - 120 days (0 - 4 months)	475	467	442	457	414	457	497	531	552	520	466	496	510
121-180 days (5 - 6 months)	83	100	105	104	109	110	89	124	136	162	219	185	134
181-270 days (7 - 9 months)	78	65	69	82	91	81	106	113	126	141	154	192	207
> 270 days (> 9 months)	84	80	73	78	73	73	90	115	141	176	187	227	238
Burglary/Theft/Larceny # Cases	940	938	900	844	893	958	1076	1183	1315	1327	1417	1518	1568
0 - 120 days (0 - 4 months)	592	612	563	510	527	578	664	669	684	599	605	584	632
121-180 days (5 - 6 months)	118	102	113	121	143	150	128	164	216	273	302	176	211
181-270 days (7 - 9 months)	105	93	91	84	97	105	157	187	210	203	228	318	367
> 270 days (> 9 months)	125	131	133	129	126	125	127	163	205	252	282	440	358
Motor vehicle Theft # Cases	80	89	93	91	89	99	113	118	124	127	132	158	162
0 - 120 days (0 - 4 months)	59	66	68	65	63	69	72	59	58	65	57	66	72
121-180 days (5 - 6 months)	7	9	7	11	15	15	20	29	30	19	27	20	22
181-270 days (7 - 9 months)	7	7	9	9	6	12	15	22	24	29	28	28	34
> 270 days (> 9 months)	7	7	9	6	5	3	6	8	12	14	20	44	34
Controlled Substance # Cases	451	469	479	460	500	523	616	676	728	719	744	749	769
0 - 120 days (0 - 4 months)	335	329	316	290	303	311	382	386	376	292	252	202	224
121-180 days (5 - 6 months)	41	65	89	67	74	90	93	105	122	160	198	115	99
181-270 days (7 - 9 months)	24	32	31	55	78	76	74	93	123	139	136	190	232
> 270 days (> 9 months)	51	43	43	48	45	46	67	92	107	128	158	242	214
Drug Court # Cases	303	319	312	305	310	314	319	328	302	275	271	280	265
0 - 120 days (0 - 4 months)	33	38	41	31	31	34	34	30	25	27	25	6	22
121-180 days (5 - 6 months)	16	22	23	28	36	37	29	22	14	14	19	7	8
181-270 days (7 - 9 months)	46	42	44	40	46	48	64	62	53	32	34	24	39
> 270 days (> 9 months)	208	217	204	206	197	195	192	214	210	202	193	243	196
Other # Cases	407	409	402	421	447	463	507	600	692	725	735	782	807
0 - 120 days (0 - 4 months)	260	261	240	264	281	303	319	357	404	381	356	341	333
121-180 days (5 - 6 months)	47	55	65	58	55	61	73	96	106	107	140	133	138
181-270 days (7 - 9 months)	47	54	56	49	56	49	54	68	94	117	122	142	161
> 270 days (> 9 months)	53	39	41	50	55	50	61	79	88	120	117	166	175
Criminal RALJ # Cases	136	133	127	140	138	143	147	138	118	96	93	81	77
0 - 120 days (0 - 4 months)	39	45	46	58	52	56	54	34	26	13	7	5	11
121-180 days (5 - 6 months)	17	14	14	15	21	25	20	28	22	22	19	7	2
181-270 days (7 - 9 months)	29	21	19	16	18	15	24	26	26	32	25	27	18
> 270 days (> 9 months)	51	53	48	51	47	47	49	50	44	29	42	42	46

(*) The highest crime category in a case's history is used to classify cases. For example, a case charged with homicide at any time during the case's history is reported as a homicide regardless of whether the charge is reduced at resolution.

“Controlled Substance - Non Drug Court” are drug related cases that have never been accepted into drug court.
“Drug Court” are cases that have been formally accepted into drug court (identified by orders).

Table 8. Comparison between SEA/KNT: Filings, Resolutions, and Pending Caseload
King County Superior Court

	Sep 2019	Oct 2019	Nov 2019	Dec 2019	Jan 2020	Feb 2020	Mar 2020	Apr 2020	May 2020	Jun 2020	Jul 2020	Aug 2020	Sep 2020
Total Filings													
SEA - # of Cases Filed	415	425	347	371	355	377	294	243	251	194	317	277	303
KNT - # of Cases Filed	245	245	185	273	244	214	178	173	146	148	256	239	195
SEA %	63%	63%	65%	63%	59%	63%	62%	58%	63%	57%	55%	54%	61%
KNT %	37%	37%	35%	37%	41%	37%	38%	42%	37%	43%	45%	46%	39%
Total Resolutions													
SEA - # of Cases Resolved	286	343	291	243	299	284	263	119	99	152	187	202	222
KNT - # of Cases Resolved	215	274	179	168	242	201	160	59	64	120	128	141	136
SEA %	57%	56%	62%	59%	56%	59%	62%	67%	61%	56%	59%	59%	62%
KNT %	43%	44%	38%	41%	44%	41%	38%	33%	39%	44%	41%	41%	38%
Total Pending													
SEA - # of Cases Pending	2248	2289	2200	2258	2329	2498	2743	2991	3235	3276	3350	3485	3520
KNT - # of Cases Pending	1467	1466	2464	1446	1427	1439	1592	1769	1896	1933	2036	2168	2216
SEA %	61%	61%	60%	61%	62%	63%	63%	63%	63%	63%	62%	62%	61%
KNT %	40%	39%	40%	39%	38%	37%	37%	37%	37%	37%	38%	38%	39%

Table 9. Drug Court Statistics
King County Superior Court

Categories	Sep 2019	Oct 2019	Nov 2019	Dec 2019	Jan 2020	Feb 2020	Mar 2020	Apr 2020	May 2020	Jun 2020	Jul 2020	Aug 2020	Sep 2020
Referrals	128	101	88	42	50	73	41	0	0	7	53	18	47
<i>Directly from PA</i>	86	64	40	29	34	33	24	0	0	6	38	4	31
<i>From Mainstream</i>	42	37	48	13	16	40	17	0	0	1	15	14	16
Opt-in ⁽¹⁾	30	24	37	19	21	27	5	0	0	14	24	24	7
Graduations ⁽²⁾	10	16	24	3	19	21	15	16	15	4	12	6	18
Terminations ⁽³⁾	7	3	7	3	2	9	7	4	6	8	6	1	11
Resolutions	17	19	31	6	21	30	22	20	21	12	18	7	29
Drug Court Pending	303	319	312	305	310	314	319	328	302	275	271	280	265
SEA Drug Court	219	232	231	218	222	225	213	225	205	189	194	211	200
KNT Drug Court	84	87	81	87	88	89	106	103	97	86	77	69	65

- (1) Opt-in reflects the court order of participation.
- (2) Graduations are dismissals of opted-in cases after the completion of program.
- (3) Terminations are cases that fail in drug court.