

Bok in Jipañ Baamle Jeļā Kōn Jikin Ekajet an Jōdikdik

Jipañ ñan Meļeļe im Jerbal ippān Jikin
Ekajet an Jōdikdik ilo King County



En Zero Jōdikdik ilo Jikin Kalbuuj eo

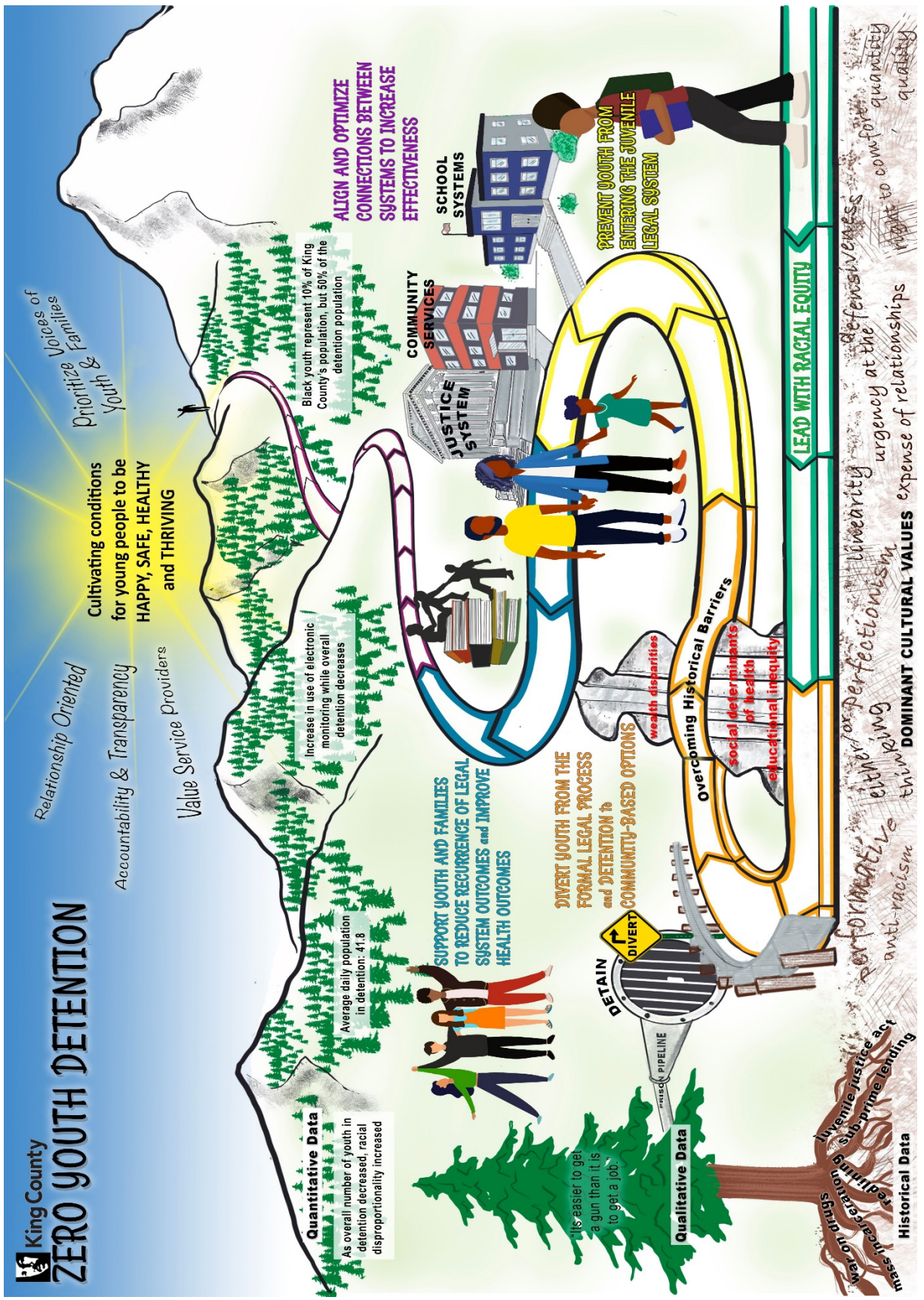


King County

**Men in
2020**

Kadkadin Bok In

Mejele eo	Alen #
Map eo ñan Kwałok lał eo bwe en Zero Jodikdik ilo Kalbuuj	3
Jinoin	4
Ta eo enaaj wałok ełaññe ejjelok aō peba in dełoñ America?	5
Ta eo enaaj wałok ełaññe I jaje Kajin Pälle?	5
Ri Utiej Ro ilo Jikin Ekajet Jodikdik	6
Tibaatmen ko im Ri Utiej Ro an Jikin Ekajet Jodikdik	7
Tibaatmen ko an Police	7
Wōpij an Ri Kinaakłok eo an King County	7
Tibaatmen an Ri Jojomar an King County	8
Superior Court (Jikin Ekajet eo E Utiej) an Jodikdik an King County	8
Ñe Nejōm Ej ilo Probation	9
Mejele kōn Probation	9
Tibaatmen an Jikin Kalbuuj an Rūtto im Jodikdik ilo King County	10
Ñe emōj aer jakōl nejōm	10
Ta eo ej wałok ñe nejōm ej etal ñan Jikin Kalbuuj an Jodikdik	10
Ełaññe raar jibwe nejōm kōn ire ilo baamle: FIRS (Family Intervention and Restorative Services Center, Jikin Jipān Baamle ilo lien Jorrān)	11
Men eo kwō maroñ kōmmane ełaññe nejōm e kalbuuj	12
Rielok Nejōm	12
Ta eo ej wałok ilo Jikin Kalbuuj Jodikdik?	13-16
Ta eo in kōmmane ełaññe nejū ej ba raar kōkkure ak kajekdoon e?	16
Wāween an Court Jerbal	16-27
Men in Jipañ Ñe Kwōj Lołok Court an Jodikdik	17
lien Roñjake ilo Court	17
Wāween an Court Jerbal (Pija)	18
lien Roñjake Kein Ka Juon	19
lien Ronjake ko Jet	20-21
lien Roñjake Me Ejeja Aer Wałok (Pija)	22
Bar Jet Būrookraam in Jipañ	23
Jet Būrookraam im Jikin Jipañ ilo lien Ekajet	24-27
Jipañ Ñan Ro Re Jorrān ilo Manit ko Aer	23
Aggression Replacement Training (ART, Katakin Jodikdik Bwe Ren Jab Illu)	23
At Risk Youth (ARY, Jodikdik Me E Maroñ Pidodo Aer Jorrān), Child in Need of Services (CHINS, Ajri Me Ej Aikuj Jipañ), im Būrookraam Ñan Ro Re Jołok Aer Jikuu!	24-27
Juvenile Justice Assessment Team (JJAT, Kumi in Jipañ Jodikdik ilo lien Ekajet)	27
Jikin Jipañ Ajri & Baamle ilo Jikin Ekajet Eo e Utiej	27
Bar Jet Men Re Maroñ Kōmmani Bwe Ren Jab Kalbuuj Electronic Monitor ilo Mweo im Kumi ko Rej Jipañ	28
Kiili Record ko	28
Naan Ko Re Kijoñ Kajerbali	29-32
Lōta ko Me Rej Jerbal Ñan Naan	33
Jikin Jipañ ilo Jukjuk in Pād ko	34-42
Kile Ro Raar Jipañ	42



Elaññe kwōj aikuj jipañ mejele bok in, jouj im lale e ippān jabdewōt ri jermal an jikin ekajet an jōdikdik ilo King County ak email ñan zydinfo@kingcounty.gov. Bok in ej ilo kajin Amharic, Marshallese, Russia, Somali, Spanish, Tigrinya, im Vietnam.

Jinoin

Ñe juon ajri e pād ilo jikin ekajet jōdikdik, ro uwaan baamle eo re kijoñ mōk kōnke emōj aer joļok iien im kajoor bwe ren pukot jipañ bwe en wor oktak im bwe ren jab kar pād ijin. Āinwōt juon eo ej lale ajri eo, bōlen kwar kapok jipañ ilo mōn jikuul ko ak jikin letok naan in kapilōk. E maroñ kar nana am mour ke kwar lo bwe jet iien e pen kapok jipañ. Meñe raar kajjioñ kapok jipañ, jet iien ro ilo baamle eo rej ļomnak bwe aer bōd kōn wāween an nejier pād.

E jab eddo eo am wōt bwe en wor juon jikin safe ñan nejōm. Ej eddo eo an aolepen jukjuk in pād eo ñan oñake aikuj ko an ajri bwe en wor juon jikin bwe en emman aer mour. Armej ro me rej jermal ilo kien im mōn ekajet re maroñ jipañ eok lo jikin jipañ ko bwe en jab wanmaanļok ilo wāween in. Ej juon men eddo ñe juon armej e ten etal ñan mōn ekajet eo, im elaññe rej kinaakļok nejōm kōn juon bōd, e maroñ waļok jorrāan ko me enaaj to aer pād.

Eñin unin an King County bul jermal bwe en lōñ jikin jipañ ilo jukjuk in pād eo bwe ajri ren bōk jipañ ñe rej aikuji. Men in juraake kein ilo jukjuk in pād eo renaaj pukot kilen jipañ bwe ajri ro ren jab aikuj kalbuuj ak bar pād ilo jikin ekajet ko. Katak ko raar kōmmani iumwin elōñ iio rej kaalikkar bwe ñe rej likūt jōdikdik ilo jikin kalbuuj, e jab emmanļok an safe jukjuk in pād eo, kab ilo jet wāween ej kōkkure jōdikdik ro, baamle ko aer, im jukjuk in pād ko. Je maroñ kōmman jet men remmanļok, im jej aikuj kōmmani, bwe en emman an ajri, baamle ko, im jukjuk in pād ko pād im bwe ren jeraamman.

Ak ilo tōre in, kwe, parent eo, e pen ñan kwe ke kwōj pukot ta eo kwōnaaj kōmmane ke emōj aer jibwe nejōm. E maroñ lōñ am kajjitōk kōn nejōm im ekōjkan an pād. Emman ke an nejū pād? E pād ia nejū kiiō? Ñāāt eo I maroñ karqol nejū ñan mweo imō? Ñāāt eo I maroñ lo e ak kōnono ippān? Ta eo ij aikuj kōmmane? Wōn eo I maroñ lōke e? Ta eo ej waļok kiiō?

Kōm ar kōmman bok in ke ewor kien ko kōn an armej pād ettoļok jān doon bwe en jab ajeeded [COVID-19](#). E maroñ wor elōñ oktak me kōm ar jab jeje kake ilo men in jipañ ko, iien roñjake ilo Court, im kakien ko kōn loļok ajri ilo jikin kalbuuj.

Jet parent im ro re kōnaan jipañ baamle ko raar kōmman bok in bwe en wor uwaak ñan kajjitōk kein. Bok in e jab juon kōmejele kōn aolep men ko an jikin ekajet eo an jōdikdik. Ak kōmij kōjatdikdik bwe bok in enaaj jipañ eok mejele kōn men ko kwō maroñ kōmmani im bwe kwōn jipañ nejōm lo jipañ ko me ej aikuji.

Ta eo enaaj waļok eļañņe **ejjeļok aō peba in deļoņ America?**

King County e kōņaan karuwaineneik im jipaņ aolep ro rej itok, jekdoņ eļañņe e jiņwe aer pād ijin ke jab. Ņe juon armej ej eņakūt ñan juon laļ ekāāl, e pen, kab e pen lale ajri ilo juon jikin ijo e oktak maņit ko an armej. Ejjeļok tibatmen an kien ilo King County enaaj kajjitōk kōn wāween aņ pād ilo America. Police ilo jekkein re jab kajjitōk ippān armej ñe rej jibwe er kōn wāween aer deļoņ ilo America. Re ban bōk meļeļe kein im likūti ilo laajrak ko ilo computer. Eļañņe ejjeļok peba ak visa ippān nejōm bwe en pād ilo America, re ban kadiwōj nejōm kōn an bōd an pād ijin. Ro ilo King County me rej jermal ilo jikin ekajet an ļodikdik re jeļā jet wāween jipaņ baamle ko me raar itok ñan America bwe ren bōk jipaņ ko me rej kajjitōk kaki. Āinwōt juon bwe ren jeļā eļañņe e jiņwe an baamle ko pād ilo America ñe re ten jipaņ er.

[Jipede ijin ñan King County Immigrant and Refugee Programs \(Būrookraam ko an King County Kōn Ro Rej Itok Jān Lal Ko Jet\)](#) ak call King County Wōpij of Equity and Social Justice (Wōpij Bwe En Ejjeļok Kalijekļok) ilo (206) 477-7525 or (206) 263-3434.

Ta eo enaaj waļok eļañņe I jaje Kajin Pālle?

Aolep armej, jekdoņ ia eo rej itok jān e im eļañņe re jeļā Kajin Pālle ke jab, ewor aer maroņ in bōk kuņaer ilo jermal ko an state court eo kab būrookraam ko an. Keej in Court ko re kijoņ in ļoor elōņ kien, im kōn an wor kajin Court me e jab aolep jeļā kake, e pen ñan jet armej. Eļañņe re jab leļok ri ukok, e maroņ pen im jab jiņwe ñan jet armej ilo aer pād ilo jikin ekajet ko, im ej kōkkure aer jiņwe im maroņ im ej kōkkure jemenei eo eļañņe re jab maroņ bōk kuņaer ilo men ko an jikin ekajet ko.

Aolep ri jermal ro jān King County re maroņ kajerbal juon telephone bwe en wor ri ukok ñe ewor iien bwebwenato ippān armej mej ñan mej ak ilo telephone. Eļañņe kwō maroņ kwaļok etaņ, phone nōmba eo aņ, im kajin eo aņ, juon ri jermal an King County e maroņ bar call eok ippān juon ri ukok. Eļañņe kwō jeļā Kajin Pālle ak eņmaņļok aņ mour ñe ewor juon aņ ri ukok, jouj im kajjitōk kōn juon ri ukok. E aorōk bwe en eņmaņ aņ pād im bwe en eņmaņ aņ meļeļe men ko rej ba bwe en jab wor pok im bwe en pidodoļok aņ kōmmaņ kuņaam ilo men ko an jikin ekajet eo.

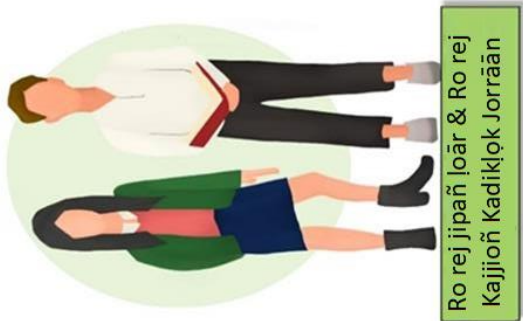
Ri ukok ro re maroņ ukōt men ko koņij ba, im re jab maroņ im ren jab **kōnono ilo etaņ** ak lewōj naan in kapilōk.

Ri Ukok ilo lien Court

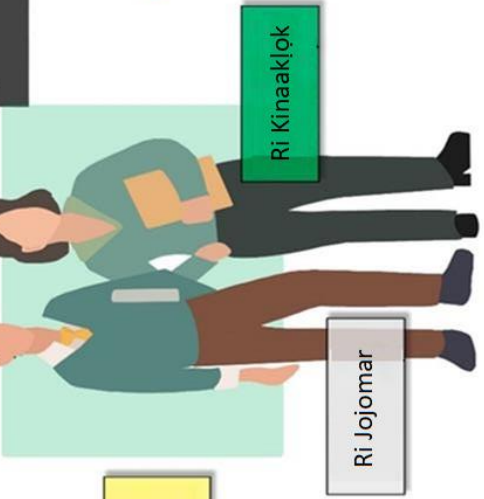
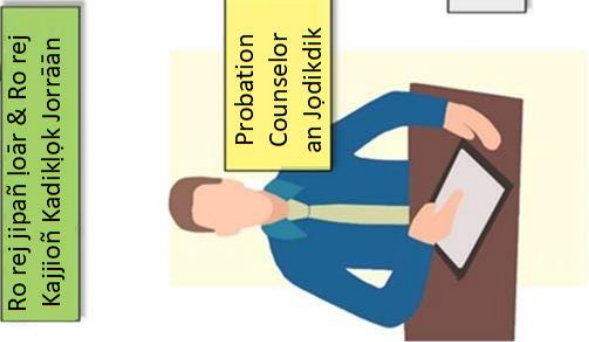
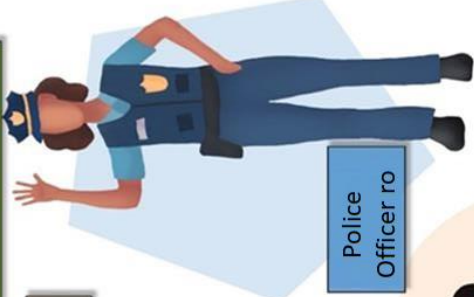
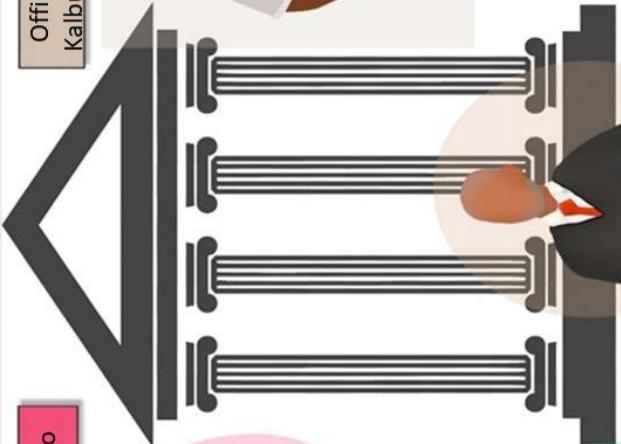
Kwō maroņ kōnono ippān lawyer eo aņ ak aņ JPC (Juvenile Probation Counselor, Probation Counselor an ļodikdik) kōn aņ aikuj juon ri ukok. Ri jermal ro an Court re maroņ in bōktok juon ri ukok im ejjeļok oņean aolep iien ñe kwōn pād ie eļañņe kwar ba bwe kwōj aikuj juon ri ukok. **Ejjeļok aņ aikuj make pukot jikin ri ukok, ak eļañņe ewor aņ kajjitōk kwō maroņ make tōpar er:** Ri Ukok ro Ņan Court (206) 477-1415 scinterp@kingcounty.gov.

Jān Kajin Afghan ñan Zulu, Superior Court's Office of Interpreter Services (OIS, Ūbij an Ri Ukok) ej bōktok ri ukok ñan elōņ jān 160 kajin ñan jipaņ ro re jab jeļā Kajin Pālle kōn men ko ilo court. Ejjeļok oņean kajerbal ri ukok ilo aolep men ko an court.

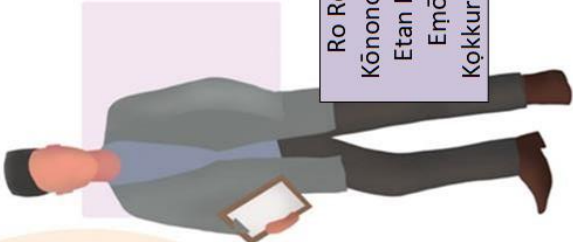
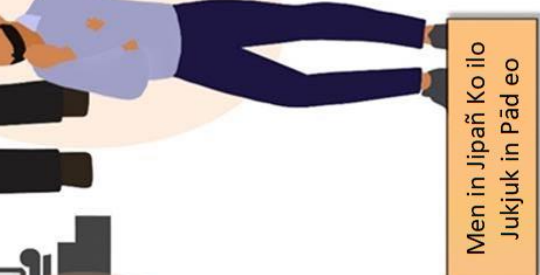
Ri Kapeel ro ilo Jikin Ekajet an Jodikdik



Social Worker ro



Ri Kinaaklõk



Tibaatmen ko im Ri Utiej Ro an Jikin Ekajet Jodikdik

Elōñ tibaatmen an King County kab jet doulul ilo jukjuk in pād eo rej ippān doon ñan kōmman wāween jermal ippān jodikdik ilo kien. Pepe ko an elōñ armej renaaj jelōt nejōm, im e ban ilo juon wōt iien ke rej kōmmani. Eṃman bwe kwōn jelā aolep iien kōn pepe ko aer im ewor maroñ ippān wōn bwe en kōmman pepe ko. Enaaj eṃmanlōk aṃ jipañ nejōm ñe eṃmanlōk aṃ jelā kōn men ko rej waļok. Kwōn je etan armej, ta jermal eo an, etan wōpij eo an, im telephone nōmba an aolep ro rej jermal ippān nejōm. E maroñ eṃman eļaññe ewor juon notebook ijo kwōj je aolepen men kein.

Ewor jet kōmelele ilal, kab ewor website an aolep tibaatmen kein. Jouj im loļok site ko im kōnono ippān tibaatmen ko eļaññe kwō kōṇaan bōk melele ko reļapļok kōn ta jermal ko aer im wāween aer jipañ.

Tibaatmen ko an Police

Eļaññe juon police officer ear kōnono ippān nejōm, bōlen officer eo ej jermal ñan King County Sheriff's Office (Qbij an Sheriff ilo King County), ak ñan tibaatmen an police ilo juon jikin kweilok. Ñe juon eṃōj kūr juon police officer ñan juon jikin, ej lale eļaññe ej safe im eļaññe eṃōj an armej kōkkure kien. Ke eṃōj an etale, e maroñ pepe bwe ajri eo ear bōk kuṇaan ilo men in kōkkure kien. Rej pepe in jakōļ ajri eo im bōkļok e ñan jikin kalbuuj eo ak rej kōmman juon **referral** (police report) ñan **Prosecuting Attorney's Wōpij (PAO, Wōpij an Ri Kinaakļok eo)**.

Obj an Ri Kinaakļok ilo King County

1211 East Alder St. Seattle, Washington 98122-5553

Awa ko ñe e peļļok qbij eo: Mānde – Bōlaide 8: 30am ñan 4: 30pm
(206) 477-3044

Ilo King County, ro rej vote rej kāālōt Prosecuting Attorney (Ri Kinaakļok eo). Rej hire bar jet loār bwer ren jermal ilo rā eo ej jermal ippān jodikdik. Wōpij eo aer e pād ilo **Children and Family Justice Center (CFJC, Jikin Ekajet an Ajri im Baamle)**. Ñe police rej kalbuuj nejōm, rej jilkinlōk juon report ñan Wōpij an Ri Kinaakļok eo. Wōpij an Ri Kinaakļok eo ej lale case eo an ajri eo im pepe eļaññe juon būrookraam ilo jukjuk in pād eo e maroñ jipañ ak eļaññe rej aikuj leļok e ñan Court.

Ri Kinaakļok eo – Ilo Court, jermal eo an Ri Kinaakļok eo ej ñan kaṃool men ko rej kinaakļok nejōm kake, ñan jipañ bwe en safe jukjuk in pād eo, im ñan jipañ ro im eṃōj kōkkure er (victim ro). Renaaj pād ilo aolep iien roñjake ko. Jet iien, enaaj oktak Ri Kinaakļok eo me ej pād ilo iin roñjake ko. Kwe im nejōm, koṃnaaj lo ri kinaakļok eo ilo court wōt, ñe ab ewor men in ṃanṃan armej ilo baamle eo.

Victim Advocate – The Victim Advocates (Ri Jojomar an Armej Me Eṃōj Kōkkure E ej leļok melele, jipañ im men in refer ñan armej eo/ro me eṃōj an ajri eo kōkkure, koba ro uwaan baamle eo. (206) 477-3035 email: vau.juvenile@kingcounty.gov

[The King County Department of Public Defense \(Tibaatmen an Ri Jojomar\)](#)

The Dexter Horton Building
710 Second Avenue, Suite 200 Seattle, WA 98104
Awa ko ñe e peļļok ɔbij eo: 8: 00am ñan 5: 00pm
Phone: (206) 296-7662 ak Ejjelok Oñean: (844) 935-3534 TTY: 711 Relay Service

Defense Attorney (Łoār Ri Jojomar) ak Public Defender (Ri Jojomar an Aolep) – Eļaññe rej kinaakļok nejōm kōn kōkkure kien, renaaj leļok ñan e juon ļoār (rej ba “ri jojomar”). Jermal an ļoār in ej ñan jutak likin ajri eo nejōm ilo Court, ñan leļok naan in kapilōk ñan nejōm im jipañ e kōn pepe ko an. Łoār eo ej jutak kōn nejōm, jab kōn kwe. Jermal an ļoār eo ej ñan jojomar ñan nejōm ilo pepe ko an. Łoār eo enaaj kōmeļeļeik nejōm kōn men ko renaaj waļok jān pepe ko an. E mō an ļoār eo kwaļok ñan kwe men ko me nejōm e jab kōñaan bwe en kwaļoki. Āinwōt e maroñ jab ba ta eo ear waļok, wōn ri kaṃool ro, im/ak meļeļe kōn ṃanit ko an nejōm ṃoktaļok.

Mitigation Specialists (Ro rej kajjioñ in kadikļok jorrāān eo) and Paralegals (Ri jipañ an ļoār) rej jermal ippān ļoār eo an nejōm. Jermal eo aer ej ñan jipañ ļoār eo ilo an jermal.

[The King County Superior Court Juvenile Division \(Ra eo an Jodikdik ilo Court eo e Utiej ilo King County\)](#)

1211 E. Alder St. Seattle, WA
Armej eo ej Jipañ im ej ilo Main Floor (206) 263-8634
8: 15am ñan 4: 30pm Mānde ļok ñan Bōlaide

Juvenile Court (Court an Jodikdik) ej juon tibaatmen ilo King County Superior Court (Court eo e Utiej ilo King County). E jenoļok jān Juvenile Detention (Jikin kalbuuj an Jodikdik), Department of Public Defense (Tibaatmen an Ri Jojomar) im Wōpij an Ri Kinaakļok eo.

Ri Jermal Ro an Court eo an Jodikdik

Elōñ armej rej jermal ilo Court eo im e kajju jermal ko aer. E oktak etan jikin jermal ko kab eddo ko an armej rein ilo tibaatmen eo.

Judges – Judges (Ri Ekajet Ro) rej armej me eṃōj kāālōt er ñan jermal ko aer. Juon judge ej bōk eddo kōn iien roñjake ko ilo court bwe aolep armej ren ļoor kien ko. Judge eo ej pepe eļaññe nejōm ej guilty ke jab, eļaññe nejōm enaaj pād wōt ilo kalbuuj, im ta kaje eo an nejōm (āinwōt probation, **Juvenile Rehabilitation (JR, Būrookraṃ ñan jipañ jodikdik bwe en eṃṃanļok aer mour)** ak community service (jermal ilo jukjuk in pād eo)). Koṃiro nejōm naaj kōnono ippān judge eo ilo iien roñjake ko an court wōt. Enaaj wor iien bwe kwe, kwōn kōnono ippān judge eo ilo iien roñjake an court eo ñe e waļok case eo an nejōm. Eļaññe kwō kōñaan kwaļok jet meļeļe ñan judge eo, kwōn ba ñan Intake **Juvenile Probation Counselor (JPC, Armej eo ej bōk meļeļe ko im ej Probation Counselor an jodikdik eo)**. Armej in Intake JPC enaaj bōk meļeļe ko an nejōm im kwaļok an ļōmṃak ñan judge eo kōn men ko re maroñ kōṃṃane ñan jipañ e.

Probation Counselor ro an Jodikdik JPCs rej pukot bwe ren meļeļe aikuj ko an nejōm, jipañ nejōm bwe en pokake judge eo, im report ñan judge eo.

Ewor jet kain JPC, im e oktak aer jermal ekkar ñan iien eo.

Screening JPC (Probation Counselor eo an Jɔdikdik me ej lale me|e|e ko ilo jinoin) – Ej kōnono ippān parent/ri lale eo ilo jinoin aer bōktok nejōm ñan jikin kalbuuj eo.

Intake JPC (Probation Counselor eo an Jɔdikdik me ej Kade|oñ e ilo jikin ekajet eo) – Ej kwa|ok an |ōmñak ñan judge eo kōn men ko re maroñ kōmñani ñan jipañ ajri eo. E|aññe ewor aṃ kajjitōk kōn men ko an court, eṃmān bwe kwōn kōnono ippān JPC in Kade|oñ e. E|aññe ewor men ko me kwōj |ōmñak judge eo ej aikuj jelā kōn nejōm, kwōn ba ñan JPC eo me ej Kade|oñ Ajri.

Supervising JPC (Probation Counselor in Lale Ajri eo) – E|aññe nejōm e pād ilo juon būrookraaṃ ijo e jab kalbuuj, ak e|aññe rej ṇa ruon e kōn an kōkkure kien ak e jab ilo kalbuuj, renaaj le|ok ñan e juon JPC in Lale. Ri Kapilōk in Lale eo enaaj jermal ippān juon probation wōpij epaak ñan ṃōn nejōm.

Ñe Nejōm ej ilo Probation (Rej kōt|ok e jān kalbuuj toñ wōt an pokake jet kien)

Ñe Court eo ej |ōmñak bwe enaaj wor men in jipañ nejōm ilo jukjuk in pād eo, re maroñ likūt nejōm ilo probation. Enañin aolep jōkdikik me rej make ba re guilty, ak eṃōj ekajet er im lo bwe re guilty, renaaj pād wōt iilo jukjuk in pād eo im pād ilo juon būrookraaṃ in probation ippān juon probation counselor (eo ej bōk eddo kōn jɔdikdik eo im le|ok kapilōk ñan e). Renaaj ba ñan nejōm bwe en |oor jet kien, āinwōt ej aikuj jikuul, kab renaaj le|ok men in jipañ me rekkar ñan nejōm im baamle ṇe aṃ. E|aññe nejōm ej ilo probation, Probation Counselor an Jɔdikdik enaaj jermal ippaṃ im nejōm ñan kōmñan juon case plan ijo e maroñ wor kapilōk, jermal, im education. Kōttōpar eo e|ap an Probation Counselor eo ej ñan jipañ nejōm im baamle eo aṃ ilo iien in ke rej lewōj jipañ im pukot kilen bwe en eṃmān im safe ilju im jek|aj.

Me|e|e kōn Probation

E|aññe kwō jelā wōn probation counselor eo an nejōm, kwō maroñ kajju call e. E|aññe kwō jaje wōn eo, kwō maroñ call wōpij eo im kajjitōk bwe ren lewōj probation counselor eo.

Wōpij ko an Juvenile Probation

Seattle (City Unit) (206) 477-4929
1211 E. Alder St. Seattle, WA

Federal Way (South II) (206) 477-7360
34004 16th Avenue South #104 Bellevue, WA 98003

Renton (South I) (206) 477-5335
451 SW 10th Street #200 Renton, WA 98057

Bellevue (Northeast Unit) (206) 477-6490
1722 138th Place NE #200 Bellevue, WA 98005

Ñan me|e|e ko re|ap|ok kōn jermal ko an JPC ro, [etal ñan web page in.](#)

The King County Department of Adult and Juvenile Detention (DAJD, Tibaatmen in Kalbuuj an Rütto im Jodikdik)

1211 E. Alder St. Seattle, WA

Tibaatmen in ej bök eddo kōn jikin kalbuuj an jodikdik. Meñe rej ilo juon wōt em, e oktak DAJD eo jān tibaatmen an Court an Jodikdik. Ri jermal ro an DAJD me rej jermal ippān jodikdik ro rej registered nurse ro, ro rej jermal ilo mental health (ro im re utaṃwe ilo kōlmān|okjeṃ), ri jipaṃ an taktō, ri kaki in jikuu|, officer ro an jikin kalbuuj an jodikdik, ro rej jermal bwe en tōprak an armej |oor kien, ro rej lale aikuj ko an armej, ro rej le|ok iien ikkure im kakkije, ro rej volunteer, im ro rej bök eddo kōn ro ilo mōn kalbuuj eo.

Ñe emōj aer jakō| ajri eo nejōṃ

E|aññe police rej kabōjrak im jakō| nejōṃ, bōlen renaaj karṃol ajri eo ñan ṃweo im ba bwe en etal ñan court ilo bar juon raan.

Ak jet iien, police ro rej jakō| nejōṃ im bōk|ok e ñan jikin kalbuuj eo. Juon police e maroñ kalbuuj nejōṃ e|aññe:

1. Police eo ej |ōmṃak bwe nejōṃ ear kōkkure kien im ear wor bu ippān.
2. Police eo ej |ōmṃak bwe nejōṃ ear ṃan juon ri jermal ilo jikuu|, juon ri utiej, ak juon ri kaki.
3. Ewor juon **warrant (peba jān judge bwe ren pukot im kalbuuj armej)** bwe ren jakō| nejōṃ.
4. Police eo ej |ōmṃak bwe nejōṃ ear kaamijak bar juon armej ak pād ilo juon wāween me e maroñ kar kōkkure juon armej ak kōkkure ṃweiiien armej.
5. Emōj jakō| nejōṃ elōñ katen ṃokta|ok, im police eo ej inepata kōn ṃanit ko an nejōṃ.

Bwe kwōn lo juon laajrak kōn unin an police maroñ kalbuuj nejōṃ, lale [Juvenile Detention Intake Criteria \(Un ko Ñan Kalbuuj Juon Jodikdik\)](#).

Ta eo ej wa|ok ilo jinoin an nejōṃ itok ñan Jikin Kalbuuj an Jodikdik

E|aññe police rej bōk|ok nejōṃ ñan jikin kalbuuj eo, renaaj bōk|ok e ñan Children and Family Justice Center (Jikin Ekajet an Ajri im Baamle) ilo 1211 E. Alder St ilo Seattle.

Medical check (Check ānbwinnen):

Ñe ej tōpar jikin kalbuuj an jodikdik, juon **nurse** enaaj lale nejōṃ. E|aññe ri jermal ro rej inepata kōn ājmour ak men in kōlmān|okjeṃ an nejōṃ, re maroñ bök e ñan juon hospital bwe ren lale. E|aññe ejje|ok nañinmej e|ap ippān nejōṃ, juon nurse enaaj lale e ñe rej bök e ñan jikin kalbuuj eo.

Ñe nejōṃ ej pād ilo kalbuuj, enaaj wor ro rej jipaṃ e kōn taktō im kōn aikuj ko an kōlmān|okjeṃ. Ewor ri jermal ilo Health clinic eo raan im boñ bwe ren lale im jipaṃ aikuj ko an jodikdik ro. Iuṃwin 24 awa ke emōj an nejōṃ de|oñ ilo jikin kalbuuj eo, juon nurse enaaj call parent ro ñan bök me|e|e kōn ājmour im aikuj ko an ajri eo, koba e|aññe ewor wūno me nejōṃ e kijoñ in idaaq aolep raan.

lien Bwebwenato Ippān Armej eo ej Bōk Melele ilo Jinoin (Screener)

Juon police officer ak juon Probation Counselor an Jodikdik me ej Bōk Melele ilo Jinoin (**JPC**) enaaj call eok ñe rej bōktok nejōm ñan jikin kalbuuj eo. “Screener (Armej me ej bōk melele)” eo enaaj roñjake ñan lōmṅak ko aṃ, uwaak kajjitōk ko, im jipañ eok jelā ta eo renaaj kōmṅmane kiiō. **Eñin juon iien emṅan bwe kwōn kōnono ilo etan nejōm.** Kwōn ba ñan Armej me ej bōk melele jabdewōt men rej aikuj jelā kōn nejōm ilo aṃ lale. Ñan wan joñak, eļaññe ewor utaṃwe an nejōm ak ej homeless, jouj im ba ñan Armej me ej bōk melele.

Armej me ej bōk melele enaaj kwaļok melele kein ippān ri jermal ro jān **Jikin Kalbuuj Jodikdik, Court** eo, **Qbij eo an Ri Kinaakļok**, im **Tibaatment in Ri Jojomar.**

Nejōm e maroñ pād ilo kalbuuj ak roļl ñan ṃweo:

Armej me ej bōk melele ko enaaj lale men ko kwe, nejōm, im police rej ba. Innām renaaj lale kakien ko an Court eo bwe ren lale eļaññe nejōm ej aikuj pād wōt ilo kalbuuj ak eļaññe e maroñ roļl ñan ṃweo.

Ekkā wōt, nejōm enaaj aikuj pād ilo kalbuuj eļaññe:

- Police rej lōmṅak bwe nejōm ear kōmṅman juon nana eļap
- Court eo ej lōmṅak bwe e ban safe ñan armej in jujuk in pād eo eļaññe rej kōtļok nejōm
- Court eo ej lōmṅak bwe nejōm e maroñ bōlen kōkkure e make
- Court eo ej lōmṅak bwe nejōm e maroñ jab itok ñan kweilok ko

Buñten ne ko kiiō:

Armej eo ej bōk melele enaaj kōmeleleik eok kōn ta eo ej waļok kiiō. Eļaññe nejōm ej jermal ippān juon Probation Counselor an Jodikdik kadede, innām Probation Counselor an Jodikdik eo enaaj jermal ippaṃ kōn men ko renaaj kōmṅmani kiiō. Bwe ren jelā ewi toōn an nejōm naaj pād ilo kalbuuj, renaaj lale men ko nejōm ear kōmṅmani, pepe ko an Probation Counselor an Jodikdik ro, judge eo, im ri kinaakļok im ri jojomar ro.

Eļaññe raar jibwe nejōm kōn ire ilo baamle:

Family Intervention and Restorative Services Center (FIRS, Jikin Jipān Baamle ilo lien Jorrāān)

Eļaññe rej kinaakļok nejōm im ba ear ṃan juon armej ilo baamle eo, re maroñ kadeļoñ e ilo the Family Intervention and Restorative Services Center (Jikin Jipañ Baamle ilo lien Jorrāān) im jab likūt e ilo kalbuuj. Jikin Jipañ Baamle ilo lien Jorrāān ej juon jikin me e jab lock, im ri jermal ro ie rej kōmṅman būrookraam im jipañ ñan jodikdik me rej kōkkure armej ilo baamle ko aer. Eļaññe nejōm e deļoñ ilo Jikin Jipañ Baamle ilo lien Jorrāān, nejōm kab baamle ṅe aṃ naaj kōmṅman juon pepe bwe koṃwin aolep pād ilo jet būrookraam ñan jipañ nejōm kōn ṃanit ko an. Ri jermal ro an Jikin Jipañ Baamle ilo lien Jorrāān re maroñ jipañ kōn naan in kapilōk bwe en dikļok an ajri eo kōmṅman jorrāān bwe baamle eo e maroñ in ippān doon. Re maroñ in iwōj ñan ṃweo imōm, im ejjeļok oṅean, im kōmṅman iien kapilōk, jipañ kōn utaṃwe ilo kōļmānļokjeṅ, būrookraam ñan ro re jorrāān kōn wūno ko re kajoor im dān in kadek im Step-Up Program (Būrookraam in Jipañ Wanṃaanļok), me ej jipañ ñe jodikdik rej kōkkure armej ilo baamle. Jikin Jipañ Baamle ilo lien Jorrāān e **jab** juon jikin kalbuuj me e lock.

Eļaññe nejōm e maroñ pād ilo Jikin Jipañ Baamle ilo lien Jorrāān, Armej eo ej Bōk Melele ilo jinoin enaaj kōnono ippaṃ kōn wāween in. Re maroñ kadeļoñ nejōm ilo Jikin Jipañ Baamle ilo lien Jorrāān eļaññe kwe parent/ri lale ej ba emṅan. Kwōn bōk bar jet melele kōn [Jikin Jipañ Baamle ilo lien Jorrāān ilo website eo aer.](#)

FIRS Center (Jikin ijo jodikdik ro rej pād) (206) 474-7373 FIRS Program Supervisor (Ri Lale Būrookraam eo) (206) 477-6528

Men eo kwō maroñ kōmmane eļañņe nejōm ej kalbuuj

Kajjioñ in loļok e ilo iien e mōkaj. Kwō maroñ loļok e ak e ban lōñļok jān jilu katen ilo juon wiik, im enaaj jimattan awa ñe kwōj loļok e. Ilo iien eo mōktata ñe kwōj loļok e, kwōn bōktok wūno ko limen (kain eo jān taktō) ajri eo. Kwō jab maroñ bōktok mōññā, nuknuk, ṁani, ak ṁweiuk ko an ñan jikin loļok ajri. Ilo iien kein ka juon ke juon parent ak ri lale ej itok im leļok ajri eo, e maroñ itok jabdewōt awa. Ilo iien ko jet, awa in loļok ajri rej:

3: 30pm im 9: 00pm ilo raan ko ilo wiik

9: 00am im 2: 30pm im 3: 30pm ļok ñan 9pm ilo weekend im holiday ko

Kwōn meļeļe bwe ewor an nejōm maroñ bwe en wor juon an ri jojomar. Ri jojomar eo an nejōm enaaj jutak kōn e im jipañ e ilo pepe ko an. Renaaj rieļok nejōm im kajjioñ pukot bwe ren kōtļok e jān jikin kalbuuj eo im bwe en meralok men ko rej kinaakļok e kaki. **Kwōn ba ñan nejōm bwe en kwaļok mool ñan ri jojomar eo.**

Police ro renaaj kajjitūkin nejōm mōkta im ālikin aer jakōļ e. Ilo King County, police re jab maroñ kōnono IPPAN juon ajri me ej ilo jikin kalbuuj eo eļañņe ri jojomar eo e jab pād ie. Ñe nejōm ej pād ilo jikin kalbuuj eo, ewor an maroñ bwe en jab kōnono, im ewor an maroñ bwe kwe im juon ļoār en pād IPPAN ilo iien aer kōnono IPPAN.

En mōkaj aṁ karṁol phone call ko. Eļañņe ejjeļok aṁ telephone, kwōn leļok ñan Court eo im ri jojomar eo nōmba eo an juon mōttam ak nukwōm me kwōj lōke. Kwōn karṁol call ko ilo iien e mōkaj tata im leļok message kab etaṁ im juon nōmba bwe ren call eok. Barāinwōt kwō maroñ kajerbal email.

Rieļok Nejōm

E aorok bwe kwōn pād IPPAN nejōm im kwōn juraake ñe rej kinaakļok e kōn kōkkure kien. Bōlen nejōm ear kōkkure eok ak bar juon armej ilo baamle eo, im bōlen kwōj ļōmṁak kwō bane ṁanit ko an. Iien in e maroñ juon iien eṁṁan ñan jipañ nejōm kapok jipañ ñan kajimwe wāween an pād IPPAM im kōmṁanmōnļok mour in baamle ṁe aṁ. E maroñ lōñ jān juon katen in aṁ naaj aikuj kijenmej IPPAN, im ilo iien in, rej aikuj bwe rūtto en iokwe im juraake er. Eļañņe kwō jab maroñ itok IPPAN, e maroñ wor bar jet rūtto me kwōn kamālim ñan jermal IPPAN.

Eļañņe ewor juon utamwe an nejōm: Ekkar ñan kien, ewor an nejōm maroñ bwe ren kabwe aikuj ko an ilo jikin kalbuuj, ilo Court, im ilo jikuuļ. Eļañņe ewor IPPAN nejōm juon utamwe me eṁōj an taktō ro kwaļoke, kwō maroñ kajjitok kōn jipañ ilo jikin kalbuuj eo, jikuuļ eo im Court. CFJC (Jikin Ekajet an Baamle im Ajri) ej ļoor kakien ko an Americans with Disabilities Act (ADA, Ro Ri America me re Utamwe).

Eļañņe nejōm ej kain leddik me e kōṁaan babu IPPAN leddik ak ļaddik IPPAN ļaddik, kaspila, kain eo e kōṁaan babu IPPAN leddik im ļaddik, kain eo e kōṁaan ukōt ānbwinnen bwe en jab leddik ak ļaddik: Eṁōj an ri kapeel ro me rej jermal ilo tibaatmen ko an King County katak bwe en eṁṁan aer jermal IPPAN jodikdik me rej LGBTQ (Lesbian, Gay, Bisexual, Transgender, Queer, Ro ri kaspila im men ko jet ilōñ). Ñe eļap aer jeļā kōn wāween nejōm, enaaj eṁṁanļok aer jipañ e. Ilo jikin kalbuuj eo an jodikdik, rej likūt ajri ro ilo jikin ko ekkar ñan wāween aer ļōmṁak kōn er make. [Kwōn bōk melele ko relapļok ijin.](#)

Kwōn kajjitōk kōn men ko kwōj aikuji: Ñe ajri ro re pād ilo jikin ekajet, emman bwe en wor ro rej jipañ parent ro kōnke jet iien re jab maroñ jermal, im re maroñ aikuji naan in kapilōk, jipañ kōn aikuji ko, im armej ñan lale ajri ro jet. Court eo e kōnaan bwe kwōn pād ie im bōk kuṇaam im enaaj kajjioñ in jipañ. Ilo iien in bōlen kwō maroñ lo jikin jipañ ko me baamle ne am ej aikuji. Jouj im kwaḷok ñan armej ilo jikin ekajet in ñe e pen an tōprak aikuji ko am (āinwōt oṇean em, mōñā ak nuknuk) ak e pen etal ñan kweilok ko. Renaaj jipañ kōn aer kwaḷok ñan eok jikin kapok jipañ im renaaj kōnono ippam kōn men ko kwō maroñ kōmmani. Ñe emman an ri kapeel ro jelā kōn aikuji ko am, enaaj emman aer jipañ.

Kwōn karoki aolep men: E maroñ pen meḷeḷe men ko an jikin ekajet eo. Elōñ armej renaaj kajjioñ in kōnono ippam im jipañ, im e oktak jermal ko aer jān doon. E maroñ oktak ro im rej jermal ippam jān iien ñan iien. Kwōn je etan armej, ta jermal eo an, etan wōpij eo an, im telephone nōm̄ba an aolep ro rej jermal ippān nejōm̄. Bōlen enaaj emman eḷaññe ewor juon notebook ijo kwōj je aolep men kein. Kab emman bwe en wor juon folder ippān notebook in ijo kwō maroñ āti aolep peba ko rej liwōj. Kwōn kajjitōk bwe ren lewōj ilo jeje men ko rej ba im ilo juon wāween bwe enaaj pidodo am meḷeḷe.

Kwōn kajjitōk: E bwe an pok men ko ilo jikin ekajet eo! Ej emman wōt eḷaññe elōñ am kajjitōk, im emman eḷaññe kwōj leḷok ejja kajjitōk wōt elōñ katen eḷaññe kwō meḷokḷok ak jab meḷeḷe. Eḷaññe juon ri mōkade e jaje uwaak kajjitōk eo am, e maroñ kwaḷok kajjien juon armej me e maroñ in uwaak.

Kwōn on time ñan kweilok ko im iien roñjake ilo Court: Eḷaññe kwō jab maroñ on time ak kwō jelā bwe kwōnaaj ruṁw̄ij, kwōn call armej ak wōpij eo ijo kwōnaaj kweilok ie. Kwōn kōmeḷeḷeik er kōn jikin im iien am jermal bwe ren jelā ñāāt eo re maroñ call eok im ñāāt eo kwō maroñ in itok.

Kwōn bōk kuṇaam ilo aolep pepe ko kōn nejōm̄: Kwōn pād ijene ñe maroñ. Meñe kwō maroñ mijak, kwōn kōnono ilo kweilok ko bwe kwōn kwaḷok am ḷōmṇak kōn aikuji ko an nejōm̄. Kwōn jab baj ba wōt bwe armej re jelā ak bwe renaaj kwaḷok meḷeḷe ko. Jet iien, e mō an ri utiej ro kwaḷok men ko re jelā ippān doon.

Kwōn bōk kuṇaam ilo Court: Kwōn pojak in bōk kuṇaam kōn am make kōnono ak kwaḷok meḷeḷe ko me kwōj ḷōmṇak e aorōk. E maroñ oktak ḷōmṇak eo am jān eo an ḷoār ro ak armej in probation. E aorōk bwe ren jelā kōn ḷōmṇak ko am. Kwō maroñ bōktok juon mōttam me kwōj ḷōke ak juon nukwōm̄ ñan rejetak eok.

Kwōn jelā kajjien ro me rej jermal ippān nejōm̄ im koutiej er: Jekḍoṇ ta ḷōmṇak ko am kōn wāween an nejōm̄ pād ak kōn armej eo ej jermal ippān, kwōn koutiej e ilo iien in am kōnono ippān. Eḷaññe kwōj ḷōmṇak bwe armej re jab koutiej ak bwe re jab jouj ñan eok, kwōn kōnono ippān supervisor eo an armej eo. E maroñ pen mour jet iien ilo jikin ekajet ko, ak enaaj jipañ eḷaññe emman am jermal ippān ro rej jermal ippān nejōm̄. E aorōk bwe kwōn kapok jipañ ñe kwōj aikuji im bwe kwōn liḷok kajjitōk ko am.

Ta eo ej waḷok ilo Jikin Kalbuuj Jōdikdik?

1211 E. Alder St Seattle, WA

Jikin kalbuuj eo ej juon em me rej locke im Tibaatmen in Kalbuuj an Rūtto im Jōdikdik ej bōk eddo kōn e. Bōlen nejōm̄ enaaj pād ilo jikin kalbuuj eo ke ej kattar iien roñjake ko ilo Court ak kōnke ej mōttan kaje eo an. Juon ajri e maroñ mijak ñe e kalbuuj im eḷaptata ñe e jab jelā ta eo enaaj waḷok. Jikin kalbuuj an jōdikdik rej ḷoor jet kien ko re pen kōn safety, jikin ajri, ājmour, im jikin ikkure.

Elaññe nejōm e kalbuuj, ri jermal ro renaaj kōkone nuknuk ko an im men ko mweien ilo juon jikin. Ri jermal ro rej lale ānbwinnen nejōm bwe ren jeļā bwe e jab kadeļoñ jabdewōt men e mo ilo jikin kalbuuj eo. Nejōm enaaj tutu ilo shower, im ri jermal ro renaaj leļok nuknuk erreō ñan e. Renaaj leļok juon jiñlij, shirt, jedoujij, jitōkin, im jodi. Ri jermal ro rej barāinwōt leļok ñan nejōm koqj im būlañkōj erreō. Rej leļok ñan nejōm juon baan̄koļ in ID. Ri jermal ro jān jikin taktō renaaj kōnono ippān nejōm im lale ej et an pād ilo ānbwinnen im lōm̄nak ko an. Ri jermal ro an jikin kalbuuj eo re ban teej nejōm kōn wūno ko re kajoor ke ej pād ie, bōtab Armej in Probation jān Court eo e Utiej e maroñ kōm̄mane.

Ālikin men kein, nejōm enaaj kōnono ippān juon Orientation and Assessment Specialist (Armej me ej lale ajri eo im ej et an pād) eo ej kōnono ippān nejōm, kōmeleleike kōn jimwe im maroñ ko an, kien ko ie, ta eo enaaj waļok, im enaaj pepe ewi jikin jokwe me e safe ñan e im ekkar ñan wāween an ajri eo pād, jete an iiō, dettan, im bar jet men, āinwōt men eo rej kinaakļok nejōm kake im manit ko an nejōm moktaļok.

Men eo e aorōk tata ippān ri jermal ro an jikin kalbuuj eo ej bwe nejōm en safe (ilo ānbwinnen, lōm̄nak ko an, im ikijien an armej babu ippān doon). Elaññe bar juon ajri e maroñ kōkkure an eṃman an nejōm pād, ri jermal ro ie renaaj lale im kōm̄manmōne. Ejeļok bu ippān ri jermal ro an jikin kalbuuj eo im re jab kajeik ajri kōn aer leļok peir ñan er, kabñōñō, kaamijak, kōkkure, ak kajook ajri ro. Elaññe ajri rej ire ippān doon, ri jermal ro re jeļā kilen kaenōm̄man armej mokta jān aer aikuj kabōjrak er kōn kajoor. Bwe aolep ren safe, Jikin Kalbuuj an Jōdikdik ej ba bwe aolep ren:

- Pād ilo aolep class in jikuul
- Bōk kuñaer ilo aolep būrookraam
- Koutiej armej
- En eṃman aer jermal ippān armej
- Jab jibwe armej ro jet
- Jouj ilo aer kōnono
- Pokake ri jermal ro
- Uwaak ilo wāween eṃman kab mōkaj
- Koutiej armej ilo aer kōnono
- Tutu aolep raan
- Lale bwe en erreō room eo kōn aer kōm̄man bed eo, joļok kwōpej, im karōki men ko mweier

Ke jōdikdik ro rej pokake kien kein, re maroñ bōk jet “iju” me re maroñ kajerbale ñan wia jet snack, rent MP3 player, im juj in ikkure kāāl. Barāinwōt, ke eṃoj an juon jōdikdik bōk oran iju ko aolep raan me rej ba, e maroñ kōm̄man jet men me ro jet re jab maroñ kōm̄mani, video game, ak bōk snack me edikļok oñear.

Elaññe juon jōdikdik ej kōm̄man jet men me re maroñ kōkkure bar juon, re kijoñ leļok ñan jōdikdik eo juon iien oktak im kōm̄manmōn kōn an kōnono ippān bar juon jōdikdik ñan pukot juon uwaak eṃman ñan problem eo ak bōlen bwe en je juon lōta in joļok bōd. Kab e maroñ jako jeraam̄man ko an jōdikdik eo, āinwōt enaaj mōkajļok an aikuj kiki ilo boñ ak e jako an “honor level status (joļok jeraam̄man ko an ro im eṃman manit ko aer)”. Elaññe juon jōdikdik ej kabñōñō bar juon, kōkkure men ko mweien armej, ak man juon armej ak kajjioñ in babu ippān, re maroñ aikuj joļok iien ilo Restoration Hall (Jikin katak bwe en oktak) eo. Jōdikdik eo ilo Jikin Katak ñan Oktak rej jikuul im pād ilo jet būrookraam ñan katak men ko re kāāl āinwōt wāween kadikļok jorrāān, kadikļok an illu, ak lale eñjake ko an.

Elaññe kwōj lōm̄nak bwe eṃoj kōkkure maroñ im jimwe ko aer, eṃman bwe ren bail juon **grievance (abñōñō)**. Supervisor ro an Jikin Kalbuuj eo rej lale aolep abñōñō ko im bōk melele kake im uwaak iumwin 24 awa. Re jab kwaļok abñōñō ko ñan armej ro jet. Ewor jilu bōk ijo ewor peba in je abñōñō ko, im bōk kein rej ilo library eo, gym eo, im jikin taktō. Aolep boñ ri jermal ro rej lale elaññe ewor abñōñō kāāl.

Ilo jikin kalbuuj eo ewor juon **jikin taktō** ijo ewor juon nurse ie aolep iien, im e maroñ lale nañinmej ko ak kinej ko. Elaññe e jorrāān ānbwinnen nejōm ak e nañinmej, nurse eo e maroñ refer nejōm ñan juon taktō ak ba en etal ñan

hospital eo. Ilo state in Washington, ʒodikdik re maroñ make kamālim [jet kain jermal in taktō](#) im āinwōt juon bwe parent ak ri lale eo en kamālim men eo. Eļaññe nejōm e kijoñ in daak wūno aolep iien, ke ej kalbuuj nurse eo enaaj leļok limen wūno. Barāinwōt ewor ri jermal ie me rej jipañ kōn men in kōlmānļokjeñ (mental health) an ajri, im renaaj jipañ eļaññe nejōm ej kajjitōk aer jipañ, ak eļaññe ri jermal ro rej lo jet manit ko re jakkar (āinwōt, eļaññe nejōm ej ba enaaj make kōkkure ānbwinnen). Ri jermal ro an kōlmānļokjeñ re maroñ jipañ nejōm ke ej jino in pād ilo kalbuuj, im re maroñ lale eļaññe ej aikuj jipañ rot in ilju im jekļaj. Eļaññe ear wor juon eo ear jermal ippān nejōm kōn utamwe in kōlmānļokjeñ mohta jān an Kalbuuj, jouj im ba ñan armej ro ilo jikin taktō eo. University of Washington Department of Psychiatry and Behavioral Sciences (Tibaatmen an Kōlmānļokjeñ im Manit) rej bōk eddo kōn jipañ ro re utamwe ilo kōlmānļokjeñ.

Wan Joñak Kōn Schedule ilo Jikin Kalbuuj

Mabuñ/Pojak ñan Jikuuļ	8: 00am – 8: 30am
Jikuuļ	8: 30am – 11: 20am
Mōñā in Raelep im Karreo	11: 50 am – 12: 35pm
Jikuuļ	12: 45pm – 2: 45pm
Ri Jermal ro rej Jānij	2: 30pm - 3: 30pm
Programming/Gym	3: 30pm – 5: 00 pm
Mōñā in Jota im Karreo	5: 00 pm – 5: 45 pm
Programming/Gym	5: 45 pm – 8: 00 pm
lien Kiki	8: 00pm - 10: 00pm

ʒodikdik me rej kalbuuj rej **jikuuļ** aolep raan Mande ļok ñan Bōlaide, im [Seattle Public School's Interagency Academy \(Kumi jān Seattle Public Jikuuļ\)](#) ej bōk eddo kōn jikuuļ eo. Ajri ro renaaj katak reading, language arts, math (bōnbōn), science, im life skills (kilen mour) im men ko renaaj ekkar ñan jete aer iio, joñan aer kar jikuuļ mohta, im men ko re jelā. Ewor katak ko ilo special education eļaññe ajri rej aikuji. Kab, ʒodikdik ro re maroñ katak bwe ren bōk G.E.D. eo ke rej jikuuļ ilo jikin kalbuuj eo. Ajri rej aikuj jikuuļ.

[King County Library System \(Jikin Library an King County\)](#) ej kōmman juon **library** ilo mōn kalbuuj eo. Aolep ʒodikdik re maroñ kajerbal library ilo raan ko emōj kōlaajraki bwe ren kōmman katak ko aer ak check out im read book ko.

Barāinwōt ewor juon Chaplaincy Program (Būrookraam in Ri Kaki an Kabuñ) me ej jipañ ajri kōn men ko ilo mour in jetōb eļaññe ʒodikdik ro re kōñaan kōnono ippān juon ri kaki. Ewor iien jar an ro rej Christian im ro rej Muslim eļaññe ʒodikdik ro re kōñaan jar.

Ewor bar jet kumi ilo jekkein me rej kōmman jet kain būrookraam ñan ro ilo jikin kalbuuj eo. Erkein jet iaan būrookraam ko: Yoga, poetry, jiña im kōmman jet men, jeje, mentoring (ro rej wan joñak ñan ro jet), kōmman jet theater ilo iien jidimkij, movie night ko, make kōmman pija in alwōj, kwalok bwebwenato, AA Kweilok ko (ñan ro re kadek), visual art class ko, basketball clinic im camp ko, trauma-informed gym class ko, kōmman jikin kallib, juon doulul ijo rej kōnono kōn aenōmman, im men ko jet.

Lale Ro Rej Deļoñ ilo Kalbuuj (206) 263-9595 (24 awa aolep raan / 7 raan ilo wiik)
Kwōn call ñan Jikin lale ro rej deļoñ eļaññe rej dāpije wōt nejōm im kwōj aikuj jelā eļaññe e kalbuuj ke jab im ñāāt enaaj wor iien roñjake ilo mōn ekajet eo.

Meļeļe ko kōn Jikin Kalbuuj eo (206) 477-9890 (24 awa aolep raan / 7 raan ilo wiik)
Ñan meļeļe ko jet kōn jikin kalbuuj eo.

[Jikin Taktō eo](#) (206) 477-9928

Ta eo enaaj waļok eļañņe nejū ej ba bwe emōj kōkkure ak kajekdoņon e?

Enaņin aolep rūtto me rej jermal ippān ajri, āinwōt ri kaki ro, counselor ro, social worker ro, case manager ro, ri jojomar ro, im armej reo jet, rej **aikuj report** (ijellokun wōt **ri jojomar ro an ro re jorrāān**). Meleļein, eļañņe nejōm ej ba ñan er bwe emōj kōkkure e, ak bwe ewor bar juon ajri me emōj kōkkure e, rūtto eo ej aikuj kōnnaanōk **Child Protective Services (CPS, Kumi in Kōjparok Ajri Jān Jorrāān)** me ej pād iumwin pein Washington State **Department of Children Youth and Families (DCYF, Tibaatmen an Ajri, Jōdikdik im Baamle)**. Elōñ iien jōdikdik ro rej kwaļok men kein ippān ri jermal ro ilo jikin ekajet eo.

Rūtto eo me ej roñ men in ej aikuj kwaļoke ñan CPS, jekdoņon ejjeļok mālim jān ajri eo ak rūtto eo. Eļañņe re jab report e, e maroñ jako aer jermal ak re maroñ kalbuuj. Armej eo me ej aikuj report en jab lōke an make lōmņak. Eļañņe juon ajri ej ba emōj man ak kōkkure e, rūtto eo ej aikuj kōnnaanōk CPS. CPS enaaj pepe ta eo enaaj kōmņane.

Ñe CPS ej roñ bwe ewor manman ajri, rej mokta je juon report me ri jermal ro an CPS ilju im jekļaj re maroñ lale. Renaaj lale eļañņe e kar wor report in manman mokta ļok. Innām renaaj pepe eļañņe ren etale men eo ajri eo ear ba. Eļañņe rej etale, renaaj kōnono ippān ajri eo im armej ro jet me re maroñ jeļā kake. Renaaj pepe eļañņe ajri eo ak armej ro jet ilo baamle rej aikuj jet kain jipaņ. Re maroñ bōlen kōnono ippān police. Im bōlen renaaj pepe bwe ejjeļok an baamle eo im ajri eo aikuj jipaņ.

Eļañņe CPS ej pepe bwe baamle eo ej aikuj jipaņ, ri jermal ro jān Tibaatmen an Ajri, Jōdikdik im Baamle renaaj jipaņ. Enaņin aolep iien, rej kweilok ippān parent/ri lale ro, kōmņan jet karōk kōn ta eo parent/ri lale ro ren kōmņane bwe en safe ajri eo, innām bar itok tokālik im loloodjake bwe ren jeļā bwe emōj an parent/ri lale ro kōmņan men eo. DCYF (Tibaatment an Ajri, Jōdikdik im Baamle) re maroñ leļok jipaņ, āinwōt therapy ñan baamle eo, ak jipaņ er jeļā kōn men in jipaņ ko jet ilo jukjuk in pād eo āinwōt housing, mōñā, ak jipaņ ilo kapok jikin jermal.

Jet iien, DCYF eo enaaj bōk armej jān baamle eo. Ñe re maroñ, rej kajjioņ jermal ippān parent ro bwe ren lo juon jikin safe ippān juon nukwōn bwe ajri eo en pād ie. Elōñ iien, eļañņe rej kōjepel armej ilo baamle, ej ñan jet wōt raan. Unin aer kōmņan men in ej bwe ren kōjparok jān jorrāān ajri re dik im bwe en mōkaj an ro uwaan baamle eo kōmņanmōn problem eo. Eļañņe DCYF ej lōmņak bwe ajri eo ej aikuj jepel jān baamle eo an eļap jān iumwin 3 raan ilo wiik, ej aikuj wor iien roņjake ilo court. Ejeja bwe ajri ro re jepel jān baamle ko aer kōn iien aetok. Men in ej waļok wōt ñe eļap an armej kar man ak kajekdoņon er, im ñe armej ilo baamle eo re jab maroñ kōmņan juon jikin bwe en safe ñan ajri ro nejeir. Ekkā wōt, eļañņe etto an ajri jepel jān baamle ko aer, ej kōnke raar kajjioņ elōñ katen jipaņ baamle eo bwe en emņan ak e jab tōprak.

Ñan meleļe ko reļapļok, jouj im lale <https://www.atg.wa.gov/child-abuse-neglect>

[Ñan report bwe emōj kōkkure ak kajekdoņon ajri](#) (866) END-HARM.

WĀWEEN AN JERBAL MEN KO AN COURT

Men in Jipaň Ñe Kwōj Loļok Court an Jōdikdik

E peļļok Court eo ñan iien roñjake ko jān 8: 30am ļok ñan 4: 30pm

Kwō maroň bōktok ro mōttam im nukwōm bwe ren pād ippam ñan rieļok eok. Ewor juon jikin bwe armej ren lale ajri jidik ñe kwōj pād ilo Court im kōmman men ko kwōj aikuj kōmmani ijo. Jouj im lale ippān Court eo bwe kwōn lo eļaññe jikin lale ajri enaaj emman ñan men eo kwōj aikuje.

Directions (la eo ej pād ie): [Jipede Ijin ñan Google Maps](#) ak [jipede ijin ñan King County Metro's Online Trip Planner](#) ([men online ñan kwalok ial ko kwōn bōki](#))

Jikin park wa: Ewor jikin park im ejjeļok oņean ñan ro rej itok. Eļaññe kwōj park iturin iaļ eo, kwōn lale eļaññe kwōj park ilo juon jikin me ej ba kwō maroň park ie iumwin 2 awa.

Ñe kwōj tōpar mweo, kwōnaaj aikuj deblōk juon metal detector (kein lale eļaññe ewor men iron ippam). Ñe kwōj deļoň, kwōn sign etaņ ilo desk eo maan ijo juon ri jermal an Court ej pād ie bwe ri jermal ro me rej jermal ippān nejōm ren jeļā bwe kwō moot tok. Mōkta jān iien roñjake eo, nejōm e maroň kōnono ippān ri jojomar eo, im eļaññe rej aikuj, ippān juon **JPC (Probation Counselor an Jōdikdik)** im juon **eo ej kōnono ilo etan armej eo me ear jorrān**.

Kwōn jeļā kadede bwe kwōnaaj aikuj kattar: Bōlen kwōnaaj kattar iumwin jet awa mōkta jān aer kūr eok ñan lowan Court eo. Ewor juon café (jikin mōñā) ilo deck eo kein ka ruo ijo ewor coffee, snack ko im bar jet mōñā. Kab ewor dān im snack ilo vending machine ko ilo deck eo kein ka juon. Kab eļoň restaurant repaak mweo.

Nuknuk ko: Āinwōt juon bwe kwōn tōreejab! Eļaññe kwōj aikuj jipaň ñan kapok nuknuk, jouj im call (206) 263-8634.

Kein kōkkure armej: E mō kadeļoň kein kōkkure armej ilo court, āinwōt bu, babbōk, kein jermal ko, im jabdewōt men me armej re maroň kajerbale ñan kōkkure armej. Aolep ro rej deļoň ilo jikin court rej aikuj deblōk metal detector eo. Eļaññe security ej inepata kōn juon men ippam, re maroň dāpije im kwō maroň bōke ñe kwō diwōj jān mweo.

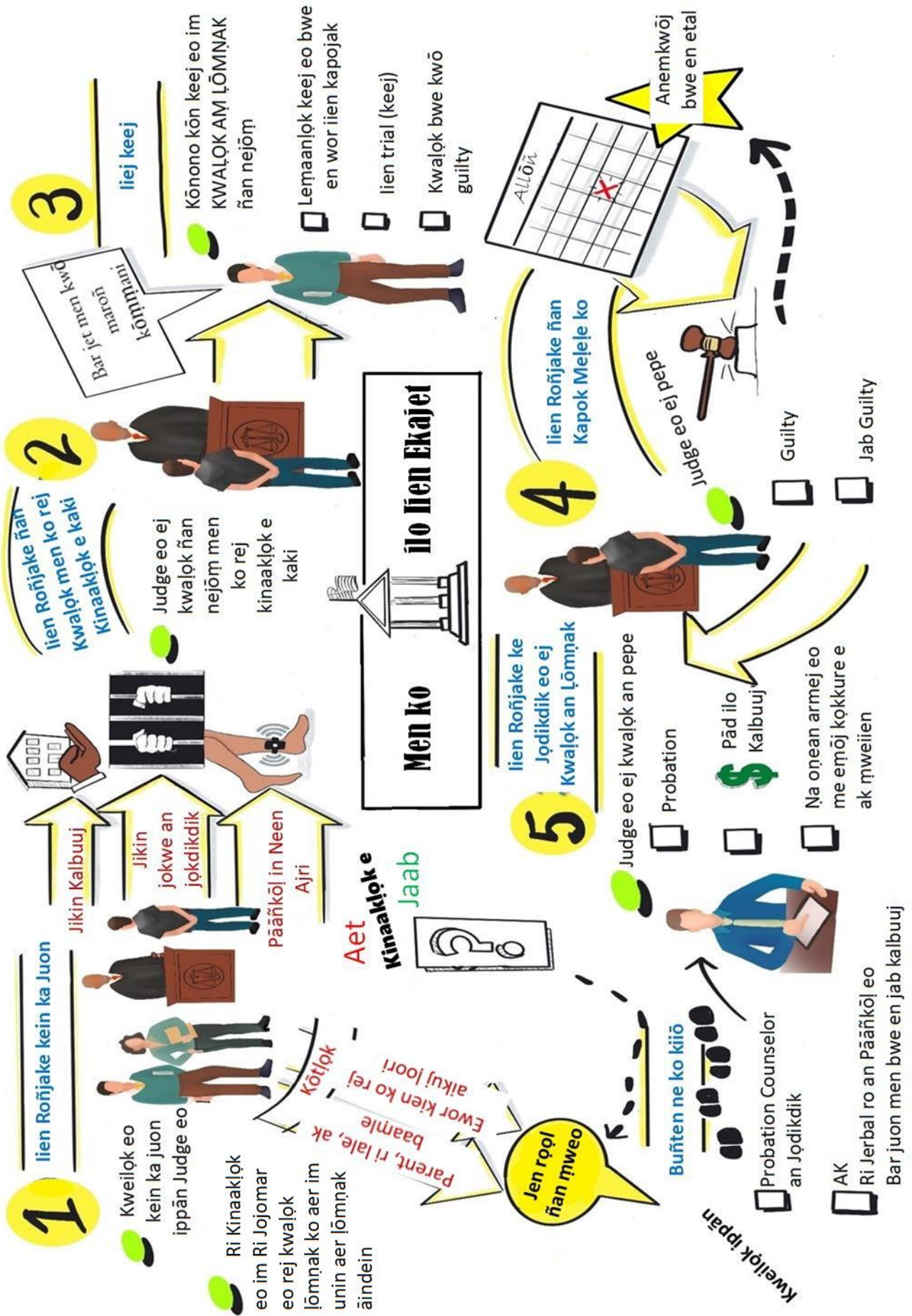
Iien Roñjake ko an Court

Armej eo ej lioon Eok ilo Main Floor eo an Mōn Ekajet an Jōdikdik (206) 477-2902

Juon iien roñjake ilo court ej juon iien kweilok ippān juon judge.

E maroň bōk jet wiik ļok ñan jet allōň bwe juon jōdikdik en pād ilo court mōkta jān an tōprak. Ewor eļoň iien roñjake, im kōn schedule eo im men ko jet, e maroň wor jet wiik ikōtan iien roñjake ko. Renaaj mail wōj juon lōta me enaaj kwalok men ko rej kinaakļok nejōm kaki im raan eo ej aikuj pād ilo court. E aorōk bwe Court eo im Department of Public Defense (DPD, Tibaatmen an Ri Jojomar) ren jeļā kōn address ñe aņ bwe ren maroň in tōpar eok. Eļaññe e maroň otkak address ñe aņ, kwōn leļok address eo an juon mōttam ak nukwōm.

Kwōn kajjitōk ippān ri jojomar eo an nejōm eļaññe nejōm ej aikuj itok ñan aolep iien roñjake ko. Eļaññe āinwōt juon bwe nejōm en pād ie, ri jojomar eo an nejōm enaaj ba ñan eok ñāāt iien court ñe nejōm ej aikuj pād ie. Eļoň iien, JPC (Probation Counselor eo) an nejōm enaaj schedule juon iien kweilok ilo ejja raan eo ke ewor iien roñjake ilo court, kōn men in jouj im kajjitōk ippān probation counselor eo an nejōm eļaññe ewor juon appointment.



E oktak wāween kōmman men kein jān armej ñan armej; jet iien enaaj wor ruo ak elōñ iien roñjake ilo juon wōt iien pād ilo court. Ak jet iien, enaaj oktak aolep raan in iien roñjake jān doon. Jet iian iien roñjake ko renaaj pād ilo room eo an court im jet renaaj pād ilo room in kattar. Jet iien e mōkaj aer kōnono im kōmman jermal ko aer ilo iien roñjake ilo court, im kōn men in emman bwe kwōn je kajjitōk ko am bwe kwōn maroñ in kajjitōk ippān ri jojomar eo an nejōm ak armej eo ear kadeloñ nejōm ijo tokālik.

Iien Roñjake Kein Ka Juon

Rej kōmman iien roñjake kein ka juon ilo raan eo ālikin aer kar kalbuuj nejōm. Juon **Probation Officer an Jōdikdik** ak **Ri Jojomar** enaaj call eok bwe en ba ñan eok ñāāt eo kwō maroñ itok ñan iien roñjake eo. Eļaññe kwō jab maroñ make itok, kwō maroñ roñjake ilo telephone.

Ilo iien roñjake eo, kwō ban maroñ in kōnono ippān nejōm. Ri kinaaklōk eo im ri jojomar eo an nejōm renaaj kwaļok lōmṅak ko aer ñan judge eo im kwaļok unin aer lōmṅak āindein. Bōlen judge eo enaaj kōṅaan bwe kwōn kōnono. Enaaj jipañ eļaññe emman am je kadede men ko re aorōk me kwō kōṅaan ba. En kadu im jab aetok am kōṅnaan kōnke ilo wāween in ej āinwōt e kajoorlōk naan ko am.

Ilo iien roñjake eo, judge eo enaaj pepe eļaññe renaaj kōtļok nejōm ak eļaññe enaaj pād wōt im kalbuuj. Wāween an judge eo pepe kōn men in ej bwe enaaj lōmṅak kōn men ko rej kinaaklōk nejōm kaki, eļaññe e maroñ jorrāan nejōm ak ro jet, im eļaññe emōj jakōl nejōm mokta lōk. Judge eo e maroñ pepe bwe men kein ren waļok ñan nejōm:

1. Eļaññe judge eo ej lōmṅak bwe nejōm e ban safe, ak eļaññe ej lōmṅak bwe bōlen nejōm e ban jāde ilo iien roñjake eo ilo court, enaaj ba bwe nejōm en kalbuuj wōt.
2. Kōtļok ajri eo bwe kwōn bōke ñan mweo imōm
3. Kōtļok ajri eo bwe en etal ippān juon nukwōm eļaññe kwōj kamālim e
4. Kōtļok e toōn wōt an loor jet kakien (āinwōt bwe en jab kōkkure kien ak bwe en jab kōnono ippān jet armej) ñe ab rej lo “probable cause (unin lōmṅak bwe ear kōmman nana eo)”.
5. Jilkinlōk e ñan juon shelter an jōdikdik eļaññe ewor am inepata kōn an maroñ in safe ilo mweo imōm
6. Kōtļok e ak ba ej aikur wor juon **Electronic Home Monitoring (EHM, juon kein kwaļok ia eo ej pād ie)** ilo kwōlalien neen

Ālikin iien roñjake eo renaaj ba bwe kwōn kweilōk ippān juon Probation Counselor, ak eļaññe raar ba bwe nejōm en kajerbal pāāñkōl ilo neen, kwōnaaj etal ippān ri jermal ro an **EHM (ASD, Jikin kōmman pāāñkōl ilo neen ñan monitor)**. Renaaj kōnono ippam kōn men ko kwōn kōmmani kiiō. Emman kōnono ippaer ālikin iien roñjake ilo court bwe kwōn jab aikuj kōmman bar juon iien jambo ñan court eo. Eļaññe ej aikuj mōkaj am etal ālikin iien roñjake eo ilo court, jouj im mokta bōk phone nōmba eo an probation counselor eo ak ri jermal ro an pāāñkōl eo bwe en pidodo am kōmman appointment. Re jeļā bwe kwōnaaj kōṅnaan kōnono ippaer.

Ri Kinaaklōk eo enaaj pepe eļaññe renaaj ṅa ruōn (file charges against) nejōm ke jab. Eļaññe re jab ṅa ruōn nejōm, komiro nejōm ban bar etal ñan Court. Eļaññe Wōpij an Ri Kinaaklōk eo ej ṅa ruon ajri eo, judge en enaaj kōṅnaanōk eok ilo iien Roñjake in Kwaļok ruōn. Ilo iien roñjake kein ka juon, bōlen kwōnaaj roñ an Ri Kinaaklōk eo kōnono ippān judge eo kōn raan ko ñe re kōṅnaan kwaļok ruōn ajri eo ak “rush charges” (kamōkaje aer ṅa ruōn e).

Iien Roñjake Ko Jet

Elaññe **Wōpij an Ri Kinaakl̥ok eo** ej ña ruōn ajri eo, innām renaaj schedule nejōm ñan bar jet **iien roñjake**. Jet kain iien roñjake rej:

Arraignment

Arraignment (Iien kwałok men eo rej ña ruōn armej eo kake) ej ñe judge eo ej kwałok ñan nejōm men eo Ri Kinaakl̥ok eo ej ña ruōn e kake. Ñan bōd jidik ko, renaaj kōmman iien kwałok ruōn ilo lobby eo an court ippān nejōm im ri jojomar eo. Ñan bōd ko rełap, renaaj kōmman iien kwałok ruōn ilo room in court eo. Enañin aolep armej rej ba “not guilty (raar jab kōmmane).” Innām enaaj wor bar juon iien roñjake me rej ba “Case Setting Hearing.”

Case Setting

Case Setting Hearing (Iien pepe kōn case eo) ej juon iien ñe nejōm im ri jojomar eo an rej kōnono ilo room in kattar eo an court. Ri jojomar eo e maroñ ba en erro wōt ke ej kōnono ippān nejōm. Unin aer kōmman men in ej bwe nejōm im ri jojomar eo renaaj kōnono kōn case eo im bwe ri jojomar eo en kwałok ñan nejōm men ko e maroñ kōmmani im jipañ nejōm ilo an pepe kōn ta eo enaaj kōmmane.

Nejōm, ke ri jojomar eo ej jipañ e, enaaj pepe ełaññe enaaj ba guilty, schedule juon case, ak lemaañl̥ok iien roñjake eo bwe en wor iien bwe en pojak. Ke eṃōj an ajri eo pepe ta eo enaaj kōmmane, ri jojomar eo e maroñ schedule juon raan in trail (pepe kōn case eo), juon raan in kōnono kōn case eo, ak juon raan ñe ajri eo enaaj kwałok bwe ewor ruōn.

Elōñ iien rej “continue (lemaañl̥ok)” iien pepe kōn case eo, im ri jojomar ak ri kinaakl̥ok eo e maroñ kajjitōk bwe ren lemaañl̥ok e. Enañin aolep iien, ri jojomar eo ej lale ełaññe re maroñ lemaañl̥ok case eo, im Judge eo ej ba ren lemaañl̥ok e ełaññe ej lōmṇak bwe e jimwe. Ñe ewor juon “continuance (iien lemaañl̥ok)”, āinwōt juon bwe kwe im nejōm ren pād ie.

Competency

“Competency (Ewor maroñ im melele)” melele in bwe nejōm e melele men ko rej wałok im e maroñ jipañ ri jojomar eo ilo an jermal. Rej kōmman iien roñjake kōn Competency ñe ri ekajet eo e kōṇaan pepe ełaññe e bwe an nejōm melele men ko bwe en maroñ pād ilo iien ekajet eo. Ełaññe juon ajri e jab competent (ełaññe e jab maroñ melele) innām re jab maroñ case ñae e. Ełaññe nejōm e jab maroñ melele, re maroñ bōlen jilkinl̥ok e ñan juon hospital an ro re utamwe ilo kōlmānl̥okjeṇ bwe ren jipañ e bwe en wor an maroñ in melele. Kab, judge eo e maroñ jołok case eo, im ełaññe ej kain eo enaaj ejjelok case im ejjelok men rej ña ruōm nejōm kake.

Omnibus (Iien kwalok kein kamool ko)

Iien roñjake in ej bwe armej ro ren pojak ñan kwałok aolep melele ko ilo iien case. Ekkā wōt aer kōmmane ilo wiik eo mokta jān trial eo. Ilo iien roñjake in, ri kinaakl̥ok eo im ri jojomar eo renaaj kwałok ñan judge eo ełaññe re pojak ñan raan in trial eo. Ełaññe loār ro rej aikuj bar jet iien bwe ren pojak ñan trial eo, judge eo e maroñ lemaañl̥ok raan in trial eo. Ełaññe loār ro re pojak ñan trial eo, renaaj lełok ñan judge aolep melele ko bwe ren wanmaañl̥ok im case. Kab, judge eo e maroñ pepe kōn bar jet men me rej aikuj kōnono kake mokta jān trial eo.

Trial/Fact-Finding Hearing

“Fact-Finding Hearing (Iien roñjake ñan kwałok men ko me raar wałok)” ak Trial (case eo) ej iien roñjake eo ñe juon judge ej pepe ełaññe nejōm ej guilty ke jab. Ejjelok jury ilo court an jōdikdik; judge eo wōt ej

pepe. Bwe judge eo en pepe bwe nejōm ej guilty, ri kinaaklōk eo ej aikuj kwałok kein kaṃool ko me rej kaṃool “beyond a reasonable doubt (im ejjełok kajjitōk)” bwe eṃōj an nejōm kōmṃan bōd eo me rej ṇa ruōn e kake. Ełañne rej ba bwe nejōm ej guilty, renaaj kōmṃan juon iien roñjake me rej ba “Disposition Hearing”.

Disposition/Plea Hearing

Men kein ruo re kijoñ in wałok ilo juon wōt iien. Ilo iien “Plea Hearing (Iien kwałok ruōn)”, rej kwałok ñan ajri eo im loār eo men ko raar ṇa ruōn ajri eo kake. Eṃōj an ri jojomar im ri kinaaklōk eo errā ilo men kein. Innām ajri eo enaaj ba bwe ej guilty kōn men ko rej kinaaklōk e kaki.

“Disposition (Kwałok kaje)” ilo court eo an jōdikdik ej āinwōt “Sentencing (Kwałok kaje)” ilo court eo an rūtto. Ilo iien disposition hearing (kwałok kaje), ri Kinaaklōk eo, ri Jojomar eo, im Probation Counselor eo renaaj kwałok lōmṃak ko aer kōn kaje eo. Jōdikdik eo, im ro rej lale jōdikdik eo renaaj barāinwōt kwałok aer lōmṃak. Āliktata, judge eo enaaj kwałok enaaj ta kaje eo an ajri eo. Naan in jiroñ kōn kaje eo ej kwałok men ko me nejōm ej aikuj kōmṃani bwe en tōprak men ko an jikin ekajet eo. Judge eo enaaj lōmṃak kōn juon men me e maroñ jipañ nejōm bwe en katak pokake, kōn ta eo enaaj safe ñan jukjuk in pād eo, im ta eo enaaj jipañ nejōm bwe en eṃṃanlōk ṃanit ko an. Jet wan joñak rej probation, counseling (iien lełok kapilōk), jermal ilo jukjuk in pād eo, karṃol jāān ełañne ear kṃot, im kalbuuj. Ełañne nejōm e jab pokake kakien ko me judge eo ej ba, nejōm e maroñ aikuj bar etal iṃaan judge eo, im re maroñ lełok bar jet kaje ñan e. Ālikin iien roñjake kōn kwałok kaje eo, ri jermal ro an court eo renaaj lełok ñan nejōm juon copy in naan in jiroñ kōn kaje eo.

Restitution

Ełañne judge eo ej jiroñ ajri eo bwe en kōmṃan restitution (kōllā oṃean kōn nana ko ear kōmṃani) innām judge eo e maroñ schedule juon Restitution hearing. Ilo iien eo judge eo enaaj pepe ewi joñan jāān nejōm ej aikuj kōllā. Ewor jet būrookraaṃ an court ñan jipañ nejōm bwe en jermal bwe en maroñ in kōllā.

Modification

Ełañne nejōm ej kṃkkure kakien ko kōn probation, Probation Counselor eo enaaj schedule juon Modification hearing (Iien ukōt kaje eo raar ba ṃokta) ippān judge eo. Probation Officer eo enaaj kwałok ñan judge eo oktak ko me en kōmṃani kōn kaje eo an ajri eo.

Detention Review

Ilo iien Detention Review (Iien lale ełañne eṃṃan kalbuuj ajri eo), Judge eo enaaj lōmṃak kōn ia eo ajri eo ej pād ie. Jōdikdik eo, Ri Jojomar eo, Ri Kinaaklōk eo, ak Probation Officer eo e maroñ kajjitōk ippān judge eo bwe en oktak ia eo ajri eo ej pād ie. Judge eo e maroñ ba bwe en pād ṃweo iṃōn im en wor pāāñkōl ilo neen, ak e maroñ ba en kalbuuj. Ak judge eo e maroñ bōk juon ajri me e kar kalbuuj e im ba bwe en rṃol ñan ṃweo iṃōn ippān juon pāāñkōl ak en baj kōtłok e.

Iien Roñjake ko me Ejeja Aer Kõmmani

Iien Roñjake ñan Lale Ejañhe
Ertman an Atri eo Maroñ Uwak

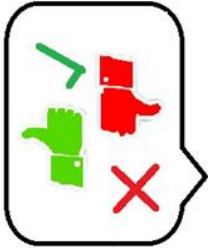
Judge eo enaaj pepe ejañhe nejõm e maroñ

- mejele kõn keej eo an
- mejele men ko rej kõmmani ilo court
- jipañ loär eo an

Iien Lõmñak kõn Kalbuuj

Aolep ro rej bõk kunaer ilo men in rej ippañ doon bwe ren pepe ejañhe nejõm enaaj

- Etal ñan jikin kalbuuj
- Diwõj jãn jikin kalbuuj
- Kajerbal ak jołok pãñkõl eo ilo neen



Omnibus Hearing

Rej kõmman men in bwe ren pojak ñan iien roñjake kõn men ko me raar kwałok

Ri Kinaakłok eo im Ri Jojomar rej kwałok ñan Judge eo ejañhe re pojak ñan keej (trial eo)

Diversions (Bar jet būrookraam in jipaň)

Elaňñe police raar refer case eo ñan **PAO (Wōpij an ri kinaaklōk)**, innām PAO eo ej pepe elaňñe nejōm enaaj etal ñan court āinwōt ro jet, ak elaňñe nejōm en pād ilo bar juon kain būrookraam. Būrookraam kein rej jipaň ajri bwe ren bōk eddo kōn men ko raar kōmmani, kab rej jipaň ajri ro lōmṅak kōn unin aer kōmman nana, im ilo wāween in ajri eo ej pād wōt ilo jukjuk in pād eo. Būrookraam kein rej jermal ippān jet kumi ilo jukjuk in pād eo im ippān jet armej ñan rejetak jōdikdik im baamle ko.

Ekkā wōt aer kajermal būrookraam kein ñan jōdikdik ro me e dik bōd ko raar kōmmani, ak King County ej kajjioň in kōmman bar jet būrookraam ñan jōdikdik ro me raar kōmman bōd ko relap (felony ko). Erkein jet wan joňak kōn būrookraam kein.

Family Intervention and Restorative Services (FIRS, Jipaň Baamle bwe en Emman Āinwōt Mokta) – Ej juon būrookraam ñan jipaň armej ilo baamle jijet im kōnono ippān doon bwe en emmanlōk aer pād, im ej lelōk kapilōk ñan baamle ijo e kar wor jōdikdik me ear man armej ilo mweo. Ewor juon jikin ijo armej ilo baamle re maroň etal im jokwe ie iumwin jet raan ñe e jab safe bwe ren pād wōt mweo. Ñan bar jet mejele, lale alen 11.

Juvenile Probation Counselor Diversion (Probation Counselor eo ej Lełok Bar Juon Ia) – Jet iien, ñe juon jōdikdik e maroň pād ilo juon būrookraam bwe en jab kalbuuj, Ri Kinaaklōk eo im Probation Officer eo renaaj ba bwe re ban lukkuun ṅa ruōn ajri eo elaňñe e mōṅōṅō in dełōň ilo juon būrookraam ñan jipaň e ak juon iien jermal ippān bwe en oktak manit ko an.

Community Accountability Boards (CABs, Kumi in Jukjuk in Pād me Rej Jipaň) – Jet iien rej ba bwe kumi in volunteer ro ilo jukjuk in pād eo ren kweilōk ippān jōdikdik eo bwe ren lōmṅak kōn jet wāween an ajri jermal ippān baamle eo an im ro ilo jukjuk in pād eo bwe en emmanlōk mour. [Choose 180 \(Kāālōt 180\)](#) – Eñin juon kumi ilo jukjuk in pād eo me ej kōmman jet class me jimattan raan aetokier. Class kein re maroň katakin jōdikdik ro kōn jemlōken pepe ko aer im kareel er bwe ren jab kōkkure kien im juen dełōň ilo men in ekajet an jōdikdik. Ñe e tōprak class ko, e jako an kien kinaaklōk jōdikdik eo.

Jet Būrookraam im Jikin Jipaň ilo lien Ekajet

King County Court Ñan Jōdikdik ej jermal ippān elōň doulul im armej ilo jukjuk in pād eo ñan jipaň jōdikdik ro im baamle bwe ren jełā kōn būrookraam ñan jipaň er im tōl er. Unin aer kōmman jermal in ej ñan jipaň armej mour jān jorrān ko me raar wałok im bwe en emman aer pād ippān doon ilo jukjuk in pād eo. Men in ej juon unin tōl ilo ad jipaň jōdikdik ro ilo manit ko aer. E aorōk būrookraam ko an jukjuk in pād eo ñan jipaň jōdikdik me emōj kōkkure kien im rej iumwin pein court eo, kōnke ej jipaň er bwe ren pād ippān armej ilo jukjuk in pād eo. Elaňñe ewor am itok limo in jermal ippān Court an Jōdikdik ilo wāween in, juj im tōpar Robert Gant, Community Partnerships Manager (206) 477-0041 rgant@kingcounty.gov

Site eo an Youth Support Resources (Men in Juraake Jōdikdik) ej lełok mejele kōn jikin jipaň jōdikdik & baamle ko ilo King County. Re maroň kōlaajrak jikin jipaň ko kōn wāween jipaň, dettan armej, im ewi tołok jān mōn armej. Bwe kwōn etal ñan site eo an Men in Juraake Jōdikdik, kwōn jipede [ijin](#). Elaňñe kwō kōṅaan kobaik ak kōkāl mejele ko ilo laajrak in, juj im e-mail SCResourceCenter@kingcounty.gov.

Behavioral Health Response (BHR):

Behavioral Health Response (BHR, Wāween Jipān Ñe Enana Manit): Kōtōpar eo an Court eo e Utiej ilo an jermal ippān BHR ej bwe en jipañ jōdikdik me ej aikuj oktak manit ko aer (koba ñe ear wor jorrāān ko reļap ak ewor ruo kain aer jorrāān) ke emōj ña rueir bwe raar kōkkure armej ak ewor men ko jet rej enōik er kake ilo JR. Ilo iaļ in, juon Probation Counselor an Jōdikdik (JPC) im juon ri jipañ jān juon doulul ilo jukjuk in pād eo renaaj jipañ jōdikdik eo. Eļaññe juon jōdikdik enaaj bōk kuṅaan ilo būrookraam in, re maroñ kadikļok nana ko an ñan misdemeanor ko (bōd ko redikļok) im re maroñ bōlen leṃaanļok iien kajeik e ak joļok aer kinaakļok e. Ñe juon ej bōk iaļ in, re maroñ leṃaanļok kaje eo an ak kadikļok men eo rej kinaakļok e kake, im kōn men in ri kinaakļok eo enaaj mōttan armej ro me rej pepe kōn wōn e maroñ pād ilo būrookraam in.

Aggression Replacement Training (ART, Katak In Armej Ñan Jolok Illu) (206) 477-9573

Eñin juon būrookraam an Court eo me ej jipañ jōdikdik ilo aer pād ippān ro jet im ilo aer bōk eddo kōn eñjake im manit ko aer. Ewor jilu mweñan katak in im rej jerbale Kakajoor Kapeel an Juon, Bōk Anjo ioon Illu, im Kōļmānļokjeñ kōn men ko re Jiṃwe. Ewor class, 1 awa aetoken, jilu katen aolep wiik iumwin 10 wiik bwe en oñ 30 awa.

At Risk Youth (ARY, Jōdikdik Me Re Maroñ Jorrāān), Child In Need of Services (CHINS), and Truancy Programs

Baamle Court eo ej bōk eddo kōn būrookraam kein, im men in ej mōttan Court eo e Utiej im e jenoļok jān probation. ARY/CHINS būrookraam ko rej jipañ parent ro me rej inepata kōn manit ko im safety eo an nejier im re kōṅaan jipañ jān Court eo bwe nejier en safe. School district eo ej kōṃṃan Truancy (ñe ajri e jab jikuu!) Būrookraam eo (ekkar ñan kien ilo state) im ej jermal ippān baamle ko bwe jōdikdik ro ren bar roṃl im katak ilo juon wāween bwe en tōprak kōtōpar ko aer kōn education.

At Risk Youth Petition (ARY, Kajitōk Jipañ kōn Jōdikdik me Re Maroñ Jorrāān):

Juon parent/ri lale e maroñ bail juon ARY Petition ñan kapok jipañ jān court eo ilo aer kajjioñ in lale im bōk eddo kōn ajri eo im ñan jipañ er ilo aer kajjioñ in kōṃṃanmōnļok jorrāān ko ilo baamle eo. Court eo e maroñ jiroñ jōdikdik eo bwe en pokake kien ko im bōk kuṅaan ilo jet būrookraam. Case manager ro rej juraake baamle ko im kwaļok jet būrookraam me re maroñ jipañ kōlaajrak armej ro ñan doon. Ñan jino men in, parent/ri lale eo ej aikuj bōk juon Family Assessment (Katak kōn Baamle eo) jān Director eo an Ajri, Jōdikdik im Baamle ko ilo (800) 609-8764.

Jouj im kōnono ippān juon case manager ñan meļeļe ko reļapļok ak etal ñan <https://www.kingcounty.gov/courts/superior-court/becca/ary.aspx>:

Mōn Ekajet eo an King County ilo Seattle – Case Manager (206) 477-4946
Ej jermal ñan Bellevue, Issaquah, Lake Washington, Mercer Island, Northshore, Riverview, Seattle, Shoreline, Skykomish, Snoqualmie, & Vashon school district ko

Maleng Regional Justice Center ilo Kent - Case Manager (206) 477-2759
Ej jermal ñan Auburn, Enumclaw, Federal Way, Highline, Kent, Renton, Tahoma, & Tukwila school district ko

Child in Need of Services (CHINS, Ajri me Rej Aikuj Jipaň):

Juon parent/ri lake, ʒodikdik ak **DCYF** e maroň bai! juon kajjitök kōn CHINS. Elaňñe ewor juon pok elap me re jab maroň kōmmanmōne ke ajri eo ej jokwe ilo mweo, court eo e maroň ba bwe ajri eo e maroň jokwe ilo bar juon jikin ke baamle eo ej pukot kilen bwe en emman aer ippān doon, ak iien an ajri eo jako e ban lap jān 6 allōñ.

Bwe ren jino in kōmman men in, parent/ri lale eo ak ʒodikdik eo ej aikuj bōk juon Family Assessment (Katak kōn Baamle eo) jān Tibaatmen an Ajri, ʒodikdik im Baamle ilo (800) 609-8764.

Jouj in kōnono ippān juon case manager ñan mejele ko relaplok ak etal ñan

<https://www.kingcounty.gov/courts/superior-court/becca/chins.aspx>:

Mōn Ekajet eo an King County ilo Seattle – Case Manager (206) 477-4946

Ej jermal ñan Bellevue, Issaquah, Lake Washington, Mercer Island, Northshore, Riverview, Seattle, Shoreline, Skykomish, Snoqualmie, & Vashon school district ko

Maleng Regional Justice Center ilo Kent - Case Manager (206) 477-2759

Ej jermal ñan Auburn, Enumclaw, Federal Way, Highline, Kent, Renton, Tahoma, & Tukwila school district ko

[Truancy & Education Reengagement \(Jipaň Ajri Me Raar Jab Jikuu! Bwe en Emman aer Katak\)](#)

Ilo Washington State, ekkar ñan kien, jikuu! ko rej aikuj bai! juon “Truancy Petition (Kōjele bwe Ajri e Jab Jikuu!)” ippān court eo im en jab rumwuj jān āllikin jiljilimjuon katen ilo juon allōñ an ajri jab jikuu! ke ejjelok un, ak en jab rumwuj jān ālikin joñoul katen ilo juon iiō (RCW 28A.225.030). Juon Truancy Petition ej juon kajjitök kōn jipaň bwe ri jikuu! ro ren tiljek ilo aer jikuu!. Barāinwōt, kien eo ej ba bwe school district eo en kajjioñ jipaň bwe en ediklok ak en jako an ajri eo jako jān jikuu! ke ejjelok un.

Ilo King County, kōtōpar eo an Truancy im Education Reengagement Process ej bwe school district ko im baamle ko ren ʒolok jabdewōt men me ej kapañ an ajri ro tiljek ilo ar jikuu! im ren jipaň bwe en tōprak aikuj ko an ajri ro bwe en emman aer jikuu!. Court eo enaaj pepe elaññe ʒodikdik eo ej aikuj itok ñan court ke ewor juon Truancy Petition. Mokta jān aer kālōt raan in roñajke ilo court, renaaj kajjitök ippān ʒodikdik eo im baamle ko bwe ren pād ilo jet būrookraam ilo jukjuk in pād eo ñan jipaň ajri mokta jān an wor jorrān, im ren jipaň aolep aikuj ko an ajri eo im jipaň e bwe en bar jikuu!. Education Reengagement team eo e kōñaan bwe ajri ro ren jab jako jān jikuu! im jujen pād ilo court kōn an jako jikuu!. Rej kōmman men in ilo aer jermal ippān armej ilo jukjuk in pād eo, katak ko kōn jikuu!, kweilok ippān armej mokta jān iien case, tōl armej, juraake ʒodikdik, refer ñan men ko ilo jukjuk in pād, im bar jet būrookraam in education. Jet iien Community Truancy Board eo ej bōk eddo kōn men ko an truancy ilo district ko.

King County Becca Court Coordinator: (206) 477-2746

King County Superior Court Truancy Būrookraam: (206) 477-2746

Kwō maroň tōpar school district eo am ñan bōk mejele im kwō maroň lo wāween tōpar armej eo ej bōk eddo kōn truancy ilo district eo am ijin:

<https://www.k12.wa.us/student-success/support-programs/attendance-chronic-absenteeism-and-truancy/district-truancy-liaison>

District Representatives Contact Information: <https://www.k12.wa.us/student-success/support-programs/attendance-chronic-absenteeism-and-truancy/district-truancy-liaison>

Deputy Prosecuting Attorney: Desk (206) 477-4336 | Cell (206) 965-5614

Kwōj Kapok Bar Jet Jikuu! ak Wāween Katak ke? Reconnect to Opportunity (Bar tōpar ijo e maroñ emman): <https://reopp.org/>

Juvenile Justice Assessment Team (JJAT) (206) 263-1522

Juvenile Justice Assessment Team (JJAT, Kumi in Lale im Jipañ Jōdikdik ilo Lien Ekajet) ej jipañ kōn utaṃwe an kōlmān!ōkjen, ro rej kajerbal wūno ko re kajoor im dān in kadek, ro rej aikuj jipañ ilo aer lōmṃak, im ej jipañ jōdikdik ro me rej ilo court bwe ren wanṃaan!ōk im en emman!ōk aer mour. JJAT ej armej jān jukjuk in pād eo me rej jipañ armej ilo kōlmān!ōkjen ko aer im armej rein rej jermal ippān ([Ryther](#) im [Seneca Family of Agencies \(Doulu ko an Baamle ilo Seneca\)](#)) im King County Juvenile Court. Ryther im Seneca rej litok ri jermal ro me rej lale aikuj ko an jōdikdik ro.

Ippān JJAT ewor elōñ ri mōkade in jipañ armej ilo kōlmān!ōkjen, koba juon clinical psychologist, ro rej taktōki armej kōn kōlmān!ōkjen, ri mōkade ñan jipañ ro re jorrān kōn wūno ko re kajoor im dān in kadek, im armej rein rej kwa!ōk lōmṃak ko aer, bwebwenato ippān armej rein, im kwa!ōk wāween aer lōmṃak in jipañ armej rein. Ilo JJAT team ewor juon JJAT Supervisor, Būrookraṃ Coordinator, im Armej in Jipañ Baamle. Ro jān JJAT me rej lale aikuj ko an jōdikdik ro rej iioon er ilo wōpij eo, ilo jukjuk in pād eo, ak ilo jikin kalbuuj joñan wōt aer aikuj in kōmṃane bwe ren lukkuun je!ā ta aikuj ko an jōdikdik eo

Superior Court Child & Family Resource Center (Jikin Jipañ Ajri & Baamle ilo Jikin Ekajet Eo e Utiej)

Bwe en emman an jōdikdik pād im mour, e aorōk bwe ren bōk kuṃaer ilo jukjuk in pād ko im bwe men kein ren aorōk ippaer. Bobbe J. Bridge Resource Center eo ej jipañ bwe jōdikdik im baamle ko re maroñ tōpar me!e!e ko, būrookraṃ ko, im iien ko remṃan me renaaj jipañ bwe en tōprak aikuj im kōtōpar ko aer. Resource Center eo ej jermal ippān jet non-profit doulu im armej ilo jukjuk in pād eo ñan le!ōk jipañ ñan jōdikdik im baamle, im rej kōmṃane ilo juon jikin ilo Children im Family Justice Center (Jikin Jipañ Ajri im Baamle me rej etal ñan jikin Ekajet eo). Awa ko an Resource Center eo rej Mande !ōk ñan Bōlaide jān 8: 30am !ōk ñan 4: 30pm. Jabdewōt armej e maroñ kapok men in jipañ kein ilo awa kein. Ñan kōnono ippaer, call (206) 263-8634.

Ilo Resource Center eo ewor juon **Clothing Shop (Jikin Kapok Nuknuk)**, me ej juon mōn nuknuk, im ijo jōdikdik re maroñ bōk, im ejje!ōk oṃean, nuknuk ko rekāal ak jidik wōt an armej kar kajerbali, bwe en wor aer nuknuk ñe rej job interview, pād imaan court, jikin award, iien kadiwōj!ōk, ak bar juon iien e aorōk. Kwōn jipede [ijin](#) ñan bōk bar jet me!e!e kōn Clothing Shop eo.

Juvenile Court Education and Employment Training (206) 477-3020

Education and Employment Training (EET, Katakim armej bwe en tōprak jikuu! im bwe en wor aer job) ej jipañ ajri bwe en emman aer jikuu!, ren pojak ñan bōk job, im e maroñ wor jikin jermal me rej kō!lā bwe ren iminene, im būrookraṃ in ej ñan jōdikdik ilo court. EET ej jipañ jōdikdik me rej ilo court, ro 15-19 aer iio, bwe en tōprak aer jikuu! im jermal. Jet ri mōkade kōn education im jermal rej jermal ippān jōdikdik

ro ilo aolepen King County. Armej re maroñ refer jodikdik ñan EET im ej jermal ippān jodikdik aolepen iiō.

Elaññe ej itok limoōm in pād ilo ak refer armej ñan EET, jouj im kōnono ippān Probation Counselor eo bwe en lale elaññe e maroñ pād ilo būrookraam eo im bwe en refer e.

Bar Jet Men Bwe En Jab Kalbuuj

Electronic Home Monitoring (206) 477-9915 ak (206) 477-9891

Ñe Court eo ej lõmṅak bwe bōlen nejōm e ban bar roḡl ñan court, im ej lõmṅak bwe e maroñ wor men in jipañ nejōm elaññe e jab kalbuuj, Court eo e maroñ ba bwe nejōm en kajerbal Electronic Home Monitoring (EHM). Renaaj leḷok ñan nejōm juon pāāñkōl (EHM) me enaaj pād neen bwe **DAJD** re maroñ lale ia eo ej pād ie. Ilo wāween in, nejōm e maroñ pād ṁweo imōn im ilo jukjuk in pād eo im jab ilo kalbuuj.

Elaññe nejōm ej pād ilo EHM būrookraam eo, kwōnaaj iioon ri jermal ro an DAJD. Jet ri jermal rej Ro Rej Kōlaak men eo im rej jipañ kōlaak EM eo ñan nejōm, im ewor Armej ilo Jukjukin Pad eo Me rej Lale, im rej lale jodikdik ro me ewor aer EHM bwe ren lale elaññe rej pokake kien ko an court im elaññe emman aer pād ilo jukjuk in pād eo. Ñe ewor EHM ippān jodikdik, re maroñ etal ñan jikin ko wōt me emōj koweppāne, āinwōt jikuul, jikin taktōk ak counseling, ñan court, ak appointment ippān Probation Officer ak loār eo. Ri jermal ro an DAJD renaaj kōnono kōn schedule eo an nejōm im koweppāne.

Group Care

Group Care (Kumi in Jipañ) ej juon jikin ijo nejōm e maroñ jokwe iumwin 24 awa iumwin jet raan. Jet doulul ilo jukjuk in pād eo āinwōt YouthCare rej bōk eddo kōn būrookraam in. Ro im 13-17 aer iiō re maroñ pād ilo Group Care, im nejōm ej aikuj errā bwe enaaj bōk kuṅaan ilo aolep būrookraam ko ke ej pād ilo ṁweo. Re maroñ likūt Pāāñkōl eo ioon neen nejōm ke ej pād ilo ṁweo ippān kumi eo. Ilo aer lale wōn re maroñ pād ilo būrookraam in, rej lale joñan an nana bōd eo me rej ba nejōm ear kōmṅane, im ṁanit ko an elaññe ear pād ilo Group Care ṁokta.

Sealing Records

Ilo Washington State, aolep pepe ko kōn court an jodikdik re pelḷok ñan aolep. Melelein bwe armej ilōbwilej re maroñ lo men ko me rej kinaakḷok nejōm kaki. Ilo court an jodikdik, ñe rej pepe bwe juon ajri ej guilty, rej ba ej juon “Adjudication (Pepe Bwe Ewor Ruōn)”, im ilo ṁool e oktak jidik jān ñe rej ba emōj kaṁool bwe juon ej juon criminal (armej me emōj kaṁool bwe ear kōkkure kien). Bōtab, kōn an wor Adjudication e maroñ pen ḷok an nejōm lo juon job. Jet iien, elaññe ej ekkar ñan nana eo nejōm ear kōmṅane, nejōm e maroñ “seal” (kiili) record eo an kōn nana eo. Ilo wāween in, ilju im jekḷaj ro im rej lõmṅak in hire nejōm, im armej ro jet, re jab maroñ lo record in nana eo an nejōm. Ñan seal record ko, nejōm ej aikuj in bail juon kajjitōk ippān court eo. Ñan melele ko reḷapḷok kōn seal record ko, kwōn call King County Department of Defense (Tibaatmen in Ri Jojomar) ilo (206) 296-7662.

Emman bwe kwōn kōnono ippān loār eo aṃ im Probation Counselor eo aṃ kōn men ko aṃ im kōn wāween bōk jipaṅ ṅan seal record eo.

Naan ko Me Eḷap Aer Kajerbali

Adjudication (Pepe Bwe Ewor Ruōn) Judge eo ilo court eo ej pepe bwe ḷodikdik eo ej guilty kōn men ko raar kinaakḷok e kake.

Advocate (Ri Jojomar) juon eo ej jermal ṅan jipaṅ armej bwe en maroṅ in kwaḷok loṃṃak ko an, bwe en jipaṅ kōjparok maroṅ im jimwe ko an armej, im jipaṅ bwe ri pepe ro ren roṅ im loṃṃak kōn loṃṃak ko an ro eṃōj kinaakḷok er eḷaptata ṅe rej pepe kōn mour ko an armej.

Anger Replacement Training (Katak ṅan Anjo loon Illu) eṅin juon būrookraam ṅan katakin ḷodikdik ro bwe ren peeke eṅjake ko aer im jeḷā kōnono ilo wāween emman. Probation Officer ro rej katakin men ilo Court eo, im jet doulul in jipaṅ kōn ājmour rej katakin men in ilo jukjuk in pād eo.

Arrested (Jakōl armej) ṅe police rej jakōl im bōk juon ajri ak ḷodikdik.

Arraignment (Kwaḷok Men in Kinaakḷok) iien roṅjake kein ka juon ilo court ke rej kwaḷok ṅan ajri eo men ko rej kinaakḷok e kake im kwaḷok maroṅ im jimwe ko an (armej eo rej kinaakḷok e ej ba guilty ak jab guilty)

Assessment (Lale Joṅan an Pād) Juon iien ṅe juon ri ṃōkade ej kōnono ippān ḷodikdik eo im/ak baamle eo bwe en lale aikuj ko aer.

At Risk Youth Petition (Kajjitōk ṅan Jipaṅ ḷodikdik) ṅe juon parent/ri lale ej kajjitōk jipaṅ jān court eo ilo aer kajjioṅ in lale im bōk eddo kōn ajri eo im ṅan jipaṅ er ilo aer kajjioṅ in kōṃṃanṃanḷok jorrān ko ilo bamle eo.

Attorney (Loār) ak loār, juon ri kapeel me eṃōj katakin im kamālim e bwe en jutak kōn armej ilo court.

Case Manager (Eo ej Bōk Eddo Kōn Case eo) e maroṅ lale aikuj ko, ej jipaṅ armej lale ta eo rej aikuje, plan, ej rielok er, refer er, im jipaṅ er lo jikin jermal ko.

Charge (Kinaakḷok) Kien eo me rej ba bwe ajri eo ear kōkkure.

Children and Family Justice Center (Jikin Ekajet an Ajri im Baamle) Mweo ilo 1211 E. Alder Street im ijo ewor Family Court Services, Juvenile Court, PAO eo, būrookraam ko an jukjuk in pād ko im men ko rej kōṃṃani, FIRS Center eo, im jikin kalbuuj an ḷodikdik.

Child in Need of Services (Ajri me Rej Aikuj Jipaṅ) Juon kajjitōk me parent, ḷodikdik, ak armej jān DCYF ej kōṃṃane ke rej kajjitōk ippān court eo bwe en likūt ḷodikdik eo ilo bar juon jikin jokwe im jab ijo ej pād ie kiiō kōnke ewor pok eḷap kiiō.

Child Protective Services (Doulul in Kōjparok Ajri) Ej ṃōttan Washington State Tibaatmen in Ajri im Baamle me ej kōjparok ajri me re maroṅ jorrān kōn an armej kajekdoṃ er, ṃan er, kōkkure er ilo wāween ettoon, ak kōkkure eṅjake ko aer. Re kōṅaan kōjparok ajri eo jān jorrān kab rielok parent ro bwe en kajoor baamle ko, kab re kōṅaan bwe en safe ilo ṃōn ajri ro.

Civil juon naan ṅan court ke armej rej ba bwe juon armej ilo baamle eo ear jab kōṃṃan kuṅaan ṅan bar juon armej ilo baamle eo (ikōtan ri lale eo im ajri ak ḷodikdik).

Community Accountability Boards (Kumi in Jukjuk in Pād Me Rej Jipañ) Volunteer ro ilo jukjuk in pād eo me rej kweilok ippān jodikdik ro im rej pepe ippān ro uwaan baamle ko im armej ilo jukjuk in pād eo bwe ajri eo e maroñ in kōmman jet men āinwōt kaje kōn bōd ko redik.

Community Empowerment Disposition Alternative Resolution (Jukjuk in Pād eo ej Kapok Bar Jet Kain Kaje) eñin juon būrookraam me ej jipañ jodikdik lo men in jipañ ko ilo juon jukjuk in pād im ej juraake jodikdik eo ālikin iien eo kein ka juon ke emōj kinaaklok e kōn juon felony. Kōn aer bōk kuṇaer ilo būrookraam in, jodikdik re ban kalbuuj.

Conditions of Probation (Kakien ko kōn Probation) renaaj oktak jān juon jodikdik ñan bar juon kōnke rej lale ta eo judge eo ej lōmṇak ekkar. Jet kakien ko kōn probation rej bwe ren jikuul, pokake kien ko an mweo, im jab kajerbal men ko re mō. Jet iien judge eo ej ba bwe ej aikuj wor couseling ak būrookraam in jipañ ro raar kajerbal wūno ko rekajoor, kōmman jermal ilo jukjuk in pād eo, ak kōllā oṇean men ko ear kōkkure.

Continuance (Leṇaanlok) Ñe rej leṇaanlok juon iien roñjake ilo court.

Counsel (Loār) Bar juon wāween ba loār.

Court (Jikin Ekajet) ej kōnono kōn Court eo e Utiej ilo King County, elaptata ñan Ra eo an Jodikdik. Barāinwōt rej ba Juvenile Court (Court an Jodikdik).

Court Order Ñe judge eo ej jiroñ bwe armej ren kōmman juon men.

De-Identification (Kattinoki) Men eo rej kōmmane ñan kōjparok mejeje ko an juon armej bwe en jab aolep armej jeļā wōn armej eo rej kōnono kake.

Department of Children, Youth, and Family Services (Tibaatmen an Ajri, Jodikdik im Baamle) ej juon doulul an state eo me ej bōk eddo kōn ajri im jodikdik ilo Washington State im ej kōmman juon plan bwe en wor men in jipañ ñan baamle ko im jipañ bwe ajri ro ren safe im en emman aer pād.

Dependency (Bōk Eddo) Ñe rej lale wōn ej bōk eddo kōn juon ajri.

Detained (Dāpije) E pād ilo mōn kalbuuj eo.

Disposition (Kaje) Ilo court an jodikdik, ej ñe judge eo ej kwaļok kaje eo an juon jodikdik.

Diversion (Bar Juon Ia) Ñe rej kajjioñ in kōmmanmōn problem eo an jodikdik eo ilo bar juon wāween bwe en jab ilo court im kalbuuj.

Due Process (Loor Kien ko) Court ko rej aikuj jermal ilo jimwe im mool; ñan wan joñak, rej aikuj kwaļok ñan ajri ro ñāāt enaaj iien roñjake ko an court kab leļok ñan er iien kwaļok lōmṇak ko aer.

Evidence-Based Program (Būrookraam me Emōj Kaṇoole) jet būrookraam ñan jipañ armej me emōj an armej katak kaki im kaṇool bwe emman aer jermal. Jet iaan būrookraam kein rej ART, FFT, MST, im FIT.

Family Court Services (Men in Jipañ Ñan Baamle ilo Court) Wōpij eo an Court me ej bōk eddo kōn kaajriri, plan ñan parent, manman armej ilo mweo, im Becca būrookraam ko: [ARY](#), [CHINS](#) im [Truancy](#).

Felony (Bōd Eļap) Juon nana eļap im kaje eo e maroñ etto ilo kalbuuj ak kalbuuj an jodikdik. Lale JR (nana ko re diklok rej ba misdemeanor ko).

File charges (Baiñ ñan Kinaaklòk) Ñe Ri Kinaaklòk eo ej ba bwe enaaj loor men ko an kien ñan kajeik juon jodikdik kōn an kar kòkkure kien. Enaaj wor iien roñjake ko, im renaaj kwałok kein kaṃool ko ñae nejōṃ.

First Appearance Hearing (Iien Roñjake Mòkta) Juon iien roñjake me rej kōṃṃane ālikin aer kar bōktok jodikdik eo ñan jikin kalbuuj eo, im judge eo enaaj pepe ełaññe ewor an court eo maroñ, ke rej lale kein kaṃool ko, ñan wanṃaanlòk im ekajet jodikdik eo.

Functional Family Therapy (FFT, Jipañ Baamle Būrookraam) Juon būrookraam e ṃòkaj me rej kōṃṃan ilo ṃweo bwe ren jipañ baamle im kajjioñ bōbrae jorrāān ñe ewor ajri im 11-18 aer iio im e maroñ pidodo aer pād ilo jorrāān.

Guardian (Ri Lale) Juon rūtto me ewor an maroñ iṃaan mejān kien bwe en kōṃṃan pepe ko kōn juon ajri im lale e. Juon guardian e maroñ parent an ajri eo, juon nukwōn, juon rūtto me e jab nukwōn, ak kien.

Grievance (Abñōñō) Ñe juon ej kwałok an abñōñō kōn juon men nana ak jakkar me eṃōj kōṃṃan ñae e.

Hearing (Iien Roñjake) Kweilòk ko an court me re maroñ kōṃṃani ilo room in kattar ippān juon loār ak ilo room in court iṃaan juon judge.

Jurisdiction (Maroñ in Ekajet) Maroñ eo an juon court ñan roñjake im pepe case eo ñae juon ajri.

Juvenile (Jodikdik) Jabdewōt armej me e dik jān joñoul ruwalitōk an iio.

Juvenile Justice Assessment Team (Kumi in Lale im Jipañ Jodikdik ilo iien Ekajet) Juon kumi jān court me ej lale aikuj ko an jodikdik bwe ren ba ñan court eo.

Juvenile Detention Officer (Officer eo ej Lale Jikin Kalbuuj an Jodikdik) Armej ro ilo jikin kalbuuj eo me rej bōk eddo bwe en wor juon jikin eṃṃan im safe ñan jodikdik ro im rej lale bwe e tōprak aikuj ko aer.

Juvenile Probation Counselor (Ri Kapilòk an Jodikdik me rej Probation) Juon ri kapeel jān Superior Court eo ej aikuj lale juon jodikdik me ej make ba e guilty ak ełaññe court eo ear ba e guilty. Rej kōṃṃan juon case plan ippān jodikdik eo im ro uwaan baamle eo, im rej kwałok ñan Judge eo melele ko kōn nejōṃ. Kōttōpar eo ełap an Probation Counselor eo ej ñan jipañ nejōṃ im baamle eo aṃ ilo iien in ke rej lewōj jipañ im pukot kilen bwe en eṃṃan im safe ilju im jeklaj.

Juvenile Rehabilitation (JR, Jipañ Jodikdik bwe en Oktak) men in ej ilo DCYF im ej kajjioñ jipañ jodikdik ro ilo Washington State me e maroñ ṃòkaj aer jorrāān. Jabdewōt court an jodikdik e maroñ lełok jodikdik ñan JR bwe en lale e. Ewor jet kakien ilo court eo an jodikdik ilo aer kwałok kaje, im men kein rej jipañ er lale wōn ro renaaj lełok er ñan JR. Ekkā wōt jodikdik rein rej ro im eṃōj aer kōṃṃan elōñ bōd ko redik ak kōṃṃan bōd ko rełap.

Law Enforcement (Ro Rej Juraake Kien) Police officer ro me rej aikuj lale bwe armej ren pokake kien ko. Ilo King County, tibaatmen eo an Sherriff eo ej jermal ippān jikin kweilòk ko jet ñan jipañ lale bwe armej ren pokake kien ko.

Mandated Reporter (Eo Ej Aikuj Report) ej juon armej me, kōn jermal eo an, ej aikuj pokake kien im report ñan Child Protective Services ñe ej lōṃṃak ewor ṃanṃan ajri ak kajekdoṃ ajri. Ri Jojomar ro im Ro Rej Kajjioñ Kadiklòk Jorrāān re **jab** aikuj report men kein.

Mentor (Ri Wan Joñak) Juon ri ṃòkade me ej juon wan joñak ñan jodikdik bwe en tōl im jipañ e bwe en eṃṃan an mour.

Misdemeanor (Bōd e dik) Ñe juon ej kòkkure kien ak ej juon bōd edik jān juon felony.

Multi-Systemic Therapy (Jipañ ñan Ajri) Ej juon therapy, ak waween jipan, ajri ilo moko imweir im 12-17 aer iio, ñe e bwe an jorrān manit ko aer.

Offense (Bōd) Juon men me, ejaññe juon rütto ear kōmmane, renaaj kar watōk e juon men in kòkkure kien (crime).

Parent Ilo jeje in, ejjeļok oktak “guardian” im “parent.”

Plea Bargain (Ba Guilty bwe en Dikļok Kaje) Ñe ļoār eo an juon ajri im ri kinaakļok eo rej kōmman juon pepe bwe en jemļok men in kinaakļok juon ajri; ekkā wōt ajri eo ej make ba ej guilty kōnke renaaj kadikļok joñan kaje eo ak juļok jet iaan men ko rej kinaakļok e kake.

Probable Cause (Maroñ Wor Un) Ewor unin tōmak bwe ajri eo ear kōmman bōd eo me rej kinaakļok e kake.

Probation (Kōtļok jān Kalbuuj) Ñe juon judge ej kōtļok juon ajri jān kalbuuj, juon Probation Counselor (JPC) ej lale ajri eo bwe en pepe ewi joñan supervision ej aikuji im bwe en lale bwe ajri eo en pokake aolep men me court eo ear ba im bwe en wor men in jipañ ko ñan ļodikdik im baamle eo.

Prosecution (Kinaakļok) Ñe rej bōktok juon ajri ñan court bwe ren ekajete kōn jet nana.

Prosecutor (Ri Kinaakļok) Juon ļoār ilo King County eo ej ña ruon juon ļodikdik kōn juon nana im ej pukot bwe ren ekajete.

Public Defender (Ri Jojomar) Juon ļoār ilo King County me court ej jitōñe bwe en jipañ im jutak kōn juon ļodikdik me e jab maroñ make kōļļā oņean juon ļoār.

Recidivism (Elōñ lien Bōd) Ñe juon ej kòkkure kien im pād ilo jikin ekajete elōñ katen.

Referral Ñe jej kōnono kōn police, naan in ej kōnono kōn report eo an police. Ñe ej juon “refer ñan bōk jipañ” jān juon Probation Counselor ak juon eo ej jipañ, naan in ej kōnono kōn ñe juon ej ļōmņak bwe armej eo juon ej aikuji jipañ.

Respondent (Ri Uwaak) Juon ļodikdik me ej iumwin pein court eo an ļodikdik kōnke raar kinaakļok e bwe ear kòkkure juon kien an eoļap (federal), state eo, ak bukwōn eo.

Restitution (Bar Kōļļā) Kōļļā ñan armej eo me emōj kòkkure e ak kōmman nana ñae e

Statute (Kien) Juon kien me Washington state legislature eo ear koweppāne.

Subpoena (Naan in Jiroñ ñan Itok) Juon peba jān court me ej jiroñ juon armej bwe en itok ilo raan im awa eo emōj ba kake bwe armej eo en kōnono ilo juon case.

Superior Court (Court eo e Utiej) Ej bōk eddo kōn probation an ļodikdik, jermal ko an court, family court, clerk ko, im ri jermal ro jet ijo.

Testimony (Naan in Kaṃool) Ñe armej rej kwaļok jet naan ñan kaṃool jet men im rej kallimur bwe renaaj kwaļok ṃool.

Truant (Ri jab Jikuu!) Juon ajri ak ļodikdik me ear jako jān jikuu! ke ejjeļok un ļalem katen ilo juon allōñ ak 10 ilo juon iiō in jikuu!.

Truancy Petition (Kajjitōk in Jipañ Ajri me re jab Jikuu!) Juon Truancy Petition ej juon kajjitōk jān jikuu! ko bwe ren pukot kilen bwe ajri ro ren bar jikuu!.

Undocumented (Ejjeļok Peba) Ñe juon armej ej jokwe ilo United States ak ejjeļok mālim bwe en pād ijin kōnke kien U.S. ear jab lale e im leļok juon visa ak e jab bar jermal visa eo an.

Warrant (Naan ñan Kalbuuje Armej) juon peba jãn juon ri utiej ilo kien me ej kamãlim police bwe ren jakõl juon jodikdik ak bõkloq e ñan juon jikin.

Acronym ko

Juon “acronym” ej juon naan me emõj aer kakaduḷok e. Elõñ armej me rej jermal ilo jikin ekajet rej kajermal naan kein. Ewor juon laajrak ilal in jet kakaduḷok me rej kajembali.

ART Aggression Replacement Therapy (Katakin Ajri Ñan Joḷok Illu)

ARY At Risk Youth (Jodikdik me e Maroñ Pidodo Aer Jorrãan), ej kōnono kōn juon būrookraam me jet rej kajjitōk bwe ren kajerbale. Lale “At Risk Youth Petition” ilo “definition ko”.

CABs Community Accountability Boards (Kumi in Jukjuk in Pãd me rej Jipañ)

CEDAR CCommunity Empowered Disposition Alternative and Resolution (Ro ilo Jukjuk in Pãd eo Rej Jipañ Ajri ilo Jet Wãween bwe ren jab Kalbuuj)

CFJC Children and Family Justice Center (Jikin Ekajet an Ajri im Baamle)

CHINS Child in Need of Services (Ajri me rej Aikuj Jipañ) im rej kajjitōk bwe en tōprak. Lale “Child in Need of Services” ilo “definition ko”

CPS Child Protective Services (Douluul in Kōjparok Ajri) Washington State Tibaatmen an Ajri, Jodikdik im Baamle rej bõk eddo kōn men in

DAJD King County Department of Adult and Juvenile Detention (Tibaatmen in Kalbuuj an Rütto im Jodikdik)

DCYF Washington State Department of Children Youth and Families (Tibaatmen in Ajri, Jodikdik im Baamle)

DPD King County Department of Public Defense (Tibaatmen an Ri Jojomar)

DSHS Washington State Department of Social and Health Services (Tibaatmen in Jermal ko an Armej im Ājmour)

EBP Evidence Based Program (Būrookraam me ewor Kein Kaḿool)

FFT Functional Family Therapy (Jipañ Baamle Būrookraam)

FIRS Family Intervention and Restorative Services (Jipañ Baamle bwe en Emman Āinwõt Mokta)

JPC Juvenile Probation Counselor (Probation Counselor an Jodikdik)

JJAT Juvenile Justice Assessment Team (Kumin in Jipañ im Lale Jodikdik ilo lien Ekajet)

JR Juvenile Rehabilitation (Jipañ Jodikdik bwe en Oktak)

MST MultiSystemic Therapy (Jet Wãween Jipañ Ke Rej Kōmman Elõñ Men ilo Juon Wõt Lien)

PAO Prosecuting Attorney’s Office (Qbij eo an Ri Kinaakloq)

Jikin Jipaň ilo Jukjuk in Pād ko

Ijo ila! ewor jet būrookraam me rej jipaň jodikdik im baamle ko ilo King County. Elaňñe kwō maroň kajerbal internet, emman bwe kwōn lale laajrak eo ekāal kōn jikin jipaň ko kōn am jipede [jijn](https://youthresources.kingcounty.gov/) ak etal ñan <https://youthresources.kingcounty.gov/>

4Culture (206) 296-7580

101 Prefontaine Pl S Seattle, WA 98104

Jodikdik ro me rej ilo iien ekajet rej jiña imi katak jet kain jermal im kapeel ippān ro rej wan joňak ñan er iumwin 16 wiik. Elap aer kajjioň in kadiklōk kalijeklōk ilo iien ekajet jodikdik ro.

Alive and Free (Mour im Anemkwōj) (206) 749-7550

2100 24th Avenue South, Suite 250, Seattle, WA 98144

Rej kajjioň in bōbrae an jodikdik ire im rej lelōk wan joňak ko remman ñan jodikdik ro me raar ilo gang ko, raar man armej im ro ilo iien ekajet an jodikdik.

Asian Counseling and Referral Services (Jipaň kōn Counsel im Refer ñan ro jān Asia) (206) 695-7600

3639 Martin Luther King Jr. Way S. Seattle, WA 98114

Ewor jipaň kōn kajin ko ilo Asia, lale aikuj ko, therapy an armej, kumi ko im baamle, case management, jipaň ilo jorrāan ko relap, jipaň kōn utamwe ilo kōlmān!okjeñ im wūno. Ewor doulul an likao me rej jān tu-rōk reear in Asia, būrookraam in bōbrae kōkkure armej ñe teen rej date, bōbrae kajerbal wūno ko rekajoor, education, mani in jipaň ñan jikuul, kapok job, tutor, jermal ilo jukjuk in pād, im ikkkure kok.

Center for Human Services (Jikin Lelōk Jipaň ān Armej) (206) 362-7282

2 jikin ilo Shoreline

Ewor counseling, class in parent ilo kajin Spanish, jipaň ñan ro re jorrāan kōn wūno ko rekajoor, lelōk nuknuk, jipaň kajerbal computer, mwijbar, jipaň parent an niñniñ. Jet iien ñe parent rej pād ilo būrookraam ko ilo Shoreline ewor ro renaaj lale nejeir ke rej pād ie.

Centro Rendú (253) 499-4245

St. Vincent DePaul, Kent, Burien, im Renton

Ewor jermal ko ñan jipaň ro rej Latinx, im rej kajin Spanish. Ewor class ñan katak parent ro, class in basic education, GED, katak kōn kajerbal computer im kajerbal jāan, case management, jodikdik im case management, bōbrae gang im ire im kajerbal wūno ko rekajoor, im jipaň bōbrae problem ilo jikuul ko im bar jet kumi. Ewor jipaň kōn immigration.

Changes Parent Support Network (Jipaň ñan Parent) (888) 468-2620

Discovery House, 4401 2nd Ave NE, Seattle

Juon būrookraam me jet parent rej kōmmani ñan jipaň parent ro jet ñe nejeir rej kōmman nana im men ko me rej make kōkkure aer mour. Changes ej lelōk kōjatdikdik, jipaň, im kōmman bwe baamle ko ren jab lōmñak bwe er make iaer ilo problem kein. Kumi ilo Seattle ej kweilōk aolep Wōnje, 7: 00-9: 30 p.m. Ewor juon potluck ilo Wōnje eo kein ka juon an aolep allōñ ilo 6: 00 p.m.

Children's Crisis Outreach Response System (CCORS, Kumi in Kapok Jipaň Ñe E Jorrāan Ajri) 206-461-3222

Men in jipaň ñan baamle ko ñe ewor ire im pok ie, ñan jodikdik ro me ewor problem kōn aer eñjake ak manit, im ñe juon jodikdik e maroň kiiō wōt aikuj jako jān ijo ej jokwe ie.

[Choose 180 \(Kāālōt 180\)](#) (206) 457-8940

1416 SW 151st ST Burien 98166

Ej oŋake aikuj ko kōn wan joŋak ko reŋman, kōnono ilo etan armej, jipaŋ kapok job, iien katak ilo summer, im jikuul.

[Commercially and Sexually Exploited Children \(Ajri me emōj Kōkkure er im Kōmman Ettoon Ippaer\)](#)

(206) 205-9534 Wōpij ak (206) 601-5563 Cell

Ej jipaŋ ajri im jōdikdik me emōj kōkkure er ilo wāween kōn men ko rettoon ak rej lōmŋak bwe armej re maroŋ kōkkure er, kab ej jipaŋ armej im baamle ko me rej lale er.

[Community Passageways \(Ial Ņan Ro Ilo Jukjuk in Pād\)](#)

7728 Rainier Ave S, Seattle, WA 98118

Ej jipaŋ kōn leloŋ wan joŋak, kōnono ilo etan armej, kapeel űan mour, jipaŋ ilo kalijekloŋ, lemaanolok kakien kāāl, im jipaŋ jōdikdik im parent me rej ilo jikin ekajet eo kōn ial űan ijo rej aikuj pād ie.

[Community Psychiatric Clinic \(Clinic űan Ro re Utamwe ilo Kōlmānloŋjen\)](#) (206) 366-3015

Elōŋ jikin, bōtab jikin eo eŋap: 4319 Stone Way N Seattle, WA 98103

Kakajoor armej, counsel ro re jab ilo hospital, lale aikuj ko, therapy űan armej, rieŋok parent, therapy űan baamle, doulul ko ijo rej katak jet kain kapeel, im case management.

[Consejo Counseling & Referral Services \(Jikin Counsel im Kapok Jipaŋ űan Armej\)](#) (206) 461-4880

Elōŋ jikin, bōtab jikin eo eŋap: 3808 S Angeline Street Seattle, WA 98118

Ej jipaŋ ro rej Latinx, jōdikdik im baamle me re maroŋ jorrāān āinwōt jān gang ko, ro rej ire, jipaŋ űan ro raar kajerbal wūno ko rekajoor, tutor, leloŋ wan joŋak, leloŋ ikkure, jipaŋ kōn oŋean jikuul, jipaŋ ro re utamwe ilo kōlmānloŋjen im re jab ilo hospital, counseling űan ro rej jikuul, bōbrae kōkkure armej kōn tape (sex), theater im jiűa, im jermal ko ilo jukjuk in pād eo.

[Credible Messengers \(Ro im Je Maroŋ Lōke Er\)](#) (206) 981-1190 (253) 335-6731 & (206) 261-2410

Ewor ro rej wan joŋak űan armej me juon wōt jikin rej itok jān e, juon wōt aer maŋit, joŋan wōt juon joŋan aer jāān im wāween mour ippān jōdikdik. Kapeel ko űan mour, kōnono ilo etan armej, wāween bwe en wor tōprak ilo mour, mour jān men in kalijekloŋ, kakajoor armej, im plan űan jikuul.

[Crime Victims Compensation \(CVC, Leŋok Jāān űan ro Emōj Kōkkure er\)](#) (800) 762-3716

Ej kōlā oŋean taktō, counsel, im űe e jako jermal kōn ro im ejjeŋok aer bōd ak emōj kōkkure er.

[Employment and Education Youth Services \(Jipaŋ Jōdikdik Kapok Jermal im Jikuul\)](#) (206) 477-7000

WorkSource Center 645 Andover Park West Tukwila, WA 98188

[Friends of Youth \(Ro Mōttan Jōdikdik\)](#) (425) 869-6490 Issaquah

Ej jipaŋ kōn aikuj ko an baamle, counsel űan ro re jab ilo hospital, im jipaŋ ro ilo middle school bwe ren jab homeless, kab shelter an jōdikdik.

[Glover Empowerment Mentoring \(GEM\)](#) (253) 277-2726

827 N Central Ave Suite B-109 Kent, WA 98032

Leŋok wan joŋak űan armej, kumi ko, im ro ilo jikuul. Case management, kōnono ilo etan armej, jipaŋ ilo jorrāān ko relap, jipaŋ armej me rej pād bajjek ilo ial ko, im jipaŋ armej bwe ren jeŋā ta eo ren kōmŋane.

[Greater Maple Valley Community Center \(Jikin ilo Greater Maple Valley űan Jipaŋ Armej\)](#) (425) 432-1272

Būrookraam űan jipaŋ teen ro im bōbrae bwe ren jorrāān. Būrookraam ko űan teen ro ilo grade 6th-12th, maŋūtūt ippān ajri ro jet, jipaŋ bōbrae an teen jorrāān űe rej date, būrookraam ilo summer, tutor, counseling, im jipaŋ ro rej LGBTQ (ri kaspila im kain ko jet).

[Guided Pathways Support for Youth and Families \(Jipaň Ñan Jodikdik im Baamle ko\)](#) (253) 236-8264
Jikin Call ñan Jodikdik & Baamle ilo aolep Juje im Taije 9: 00am-5: 00pm (253) 277-4052
6625 S. 190th St., Suite B108, Kent, WA 98032

Ej leļok jipaň parent 1 ippān 1 ñe ajri ro nejier rej pād ilo System of Care (Būrookraam in Jipaň). Ewor class ñan parent im ñan ro rej jipaň parent ro. Ewor jipaň ñan jodikdik jān bar jet jodikdik. Ewor maķūtkūt ko an baamle bwe ren ippān doon.

[Harborview Medical Center Traumatic Stress Counseling \(Kapilōk jān Harborview Medical Center ñan Ro E Pen Mour\)](#) (206) 744-1600 Seattle, (425) 688-5130 Bellevue

Ej leļok counseling ñan ro re jorrān jān aolep kain kōkkure armej.

[Helping Youth Perform Excellence HYPE \(Jipaň Jodikdik bwe en Emman Aer Kōmman\)](#) (253) 740-8198

Federal Way

Juon būrookraam aolep ruo wiik ñan jipaň ajri me 14-18 aer iiō me rej ilo probation ak e maroň epaak aer probation. Ro ri tōl ilo jukjuk in pād eo me rej katakin ajri bwe ren maroň tōl ro jet im katakin er kapeel ñan mour. Rej jipaň plan bwe en emman mour.

[Horn of Africa \(Tu-rōk in Africa\)](#) (206) 760-0550

5303 Rainier Ave. S. Suite D Seattle, WA 98118

Ewor case management im katakin armej bwe ren jermal, im ej ilo kajin Amheric, Oromiff, Tigrinya, im Somali. Ej jipaň ro ilo aolepen King County me rej itok jān reeaar in Africa.

[The IF Project](#)

Kōmelele

[Journeymen](#) (206) 429-5203 Vashon Island

Ej jipaň ļaddik im emman kōn aer kajermal jet men jān laļ in ñan jipaň er ilo aer rūttoļok, im ej leļok wan joňak remman ñan er. Ewor iien camp, class ko, retreat ko, im men ko jet.

[Kent Youth and Family Services \(Jikin Jipān Jodikdik im Baamle ilo Kent\)](#) (253) 859-0300

232 2nd Ave. S. Ste 201 Kent, WA 98032

Ej jipaň ro im re utamwe ilo kōļmānļokjeņ im re jorrān jān wūno ko rekajoor, ro rej LGBTQ (kaspila im kain eo) im ajri ro me 13-19 aer iiō, būrookraam in jipaň jodikdik ālikin jikuul, im bōbrae an armej homeless.

[King County Sexual Assault Resource Center \(KCSARC, Jikin Jipaň ilo King County Ñan Ro Emōj Kōkkure er ilo Wāween Ettoon\)](#) (425) 226-5062

24-Hour Crisis Response Line (888) 998-6423

200 Mill Avenue South, Suite 10 Renton, WA 98057

Ñan ro im emōj kōkkure er ilo wāween ettoon (āinwōt tape ke raar jab kōṇaan) ej leļok therapy, kōnono ilo etan armej, jipaň kōn men ko an kien, kakajoor baamle ko, im jipaň ro ilo jorrān. Barāinwōt ewor aer maroň in jijpaň ilo kajin Spanish.

[King County Wraparound WISE](#) (206) 263-8957 ak (206) 263-9006

Elōñ armej rej jermal āinwōt juon team ñan jipaň jodikdik me elōñ aer problem im baamle ko aer, im rej kajjioň jipaň bwe en emmanļok an jodikdik eo mour.

Learning Centers

Shoreline Community College (206) 533-6733

Seattle Vocational Institute (206) 934-4439

Ej jipaň jodikdik me 16-24 aer iio im re jaňin kaňođe high school, ak re kōňaan kōňman GED innām college, katak kōn men ko technical, im/ak kapok job. Ej kōnono ilo etan jodikdik ke rej kajjioň jikuul im rej kōňman case management.

[Mentoring Urban Students and Teens \(M.U.S.T., Lełok Wan Joňak Ņan Ri Jikuul im Teen ro ilo Jikin Kweilok ko\)](#) (206) 949-7444

4093 Letitia Ave S. Seattle, WA 98118

Rej kōllā ri jikuul in college bwe ren jipaň im wan joňak Ņan likao me rej class 8 łok Ņan high school ilo Rainier valley.

[Mercer Island Youth and Family Services \(Jikin Jipaň Jodikdik im Baamle ilo Mercer Island\)](#)

Ewor counseling im therapy ilo jikuul im ippān baamle ko.

[National Suicide Prevention Lifeline \(Jikin Call Ņan Bōbrae an Armej Make Bōk Aer Mour\)](#) (800) 273-8255 TTY (800) 799-4889

Armej rej kōnono ilo telephone Ņan jipaň armej me re jorrāān im rej lōmňak in make bōk aer mour im ro mōttan armej rein. Rej kōňman men in 24/7, im ejjełok oňean, im re jab kwałok melele ko Ņan bar jet.

[Navos](#) (206) 248-8826

Elōň jikin re pād ie: Jikin eo ełap: 2600 SW Holden Street, Seattle, WA 98126

Rej taktōki ro rej kiki ilo clinic eo im ro re jab, ro ilo moko imweir, im rej etal Ņan jikuul ko bwe ren jipaň jodikdik me re utaňwe ilo kōlmānłokjen.

[Neighborhood House \(Juon Em ilo Jukjuk in Pad eo\)](#) (206) 461-8430

Ewor jikin ilo Seattle im Auburn

Ewor būrookraaň Ņan ālikin jikuul, Jikin jipaň Baamle me rej ilo High Point, im Jikin Jipaň Jodikdik ilo aer jikuul im kapok job.

[North Shore Youth and Family Services \(Jikin Jipaň Jodikdik im Baamle me rej iturin Parijet Eaň\)](#) (425) 485-6541

19201 120th Ave. NE Ste 108 Bothell, WA 98011

Jipaň kōn ro re utaňwe ilo kōlmānłokjen, ro re jorrāān jān wūno ko rekajoor, ewor class Ņan parent, im ewor būrookraaň Ņan jipaň ro ilo jikuul.

[Open Doors for Multicultural Families \(Kōjām ko Re Pellok Ņan Baamle ko ijo Ewor Armej Jān Elōň Jikin\)](#) (253) 216-4479

24437 Russell Rd., Suite # 110 Kent, WA 98032

Ej jipaň jodikdik im baamle im ajri me re utaňwe Ņe ewor armej ilo baamle im e kajju kajin ko aer jān doon. Ej jipaň jodikdik im baamle ilo jet wāween me rej koutiej manit ko aer, ewor doulul Ņan rielok armej, ej jipaň armej bwe ren pojak in kapok jermal, jipaň er kōn wāween mour, bōbrae bwe ren homeless, kōnono ilo etan armej, jipān er jełā ta eo ren kōňmane, ikkure, im bar jet men.

[Parent for Parent \(Parent me Rej Jipaň Parent\)](#) (206) 477-2311

[Superior Court, Seattle and Maleng Regional Justice Center, Kent \(Court eo e Utiej im Jikin Ekajet ilo Maleng, Kent\)](#)

Court eo e Utiej ej kōňman juon būrookraaň Ņan jipaň parent ro ke emōj an Child Protective Services (CPS) bōk ajri ro nejier jān er, im parent ro me nejier rej jokwe ippaer ak rej iumwin pein kien. Ej kōňman bwe "Parent Allies" (parent ro emōj aer pād ilo men in ekajet jodikdik im re jełā) ren kōnono ippān parent ro me rej kab jino pād ilo iien ekajet jodikdik. Parent Allies rej jipaň parent ro me rej kab

pād ilo jikin ekajet an jōdikdik bwe ren jeļā ta eo ren kōmṃane bwe ren maroñ bar pād ippān ajri ro nejier.

Ewor jilu mweñan būrookraam in: Jipañ jān Parent Ally ro ilo iien Roñjake ko an Court kōn Wōn enaaj Bōk Ajri eo, juon class me ruo awa aetoken me rej ba Dependency 101 (Wōn ej Bōk Eddo Kōn Ajri eo), im bar juon class tokālik me rej ba Dependency 201 (Wōn ej Bōk Eddo Kōn Ajri, part 2).

[Positive Outcomes Program \(Būrookraam bwe en Wor Juon Tōprak Emman\)](#) (253) 838-6810

Federal Way

Juon būrookraam ñan jōdikdik ñan jipañ er diwōjļok jān high school ak bōk GED, jino in college ak bar juon būrookraam in katak, kapok job, kapok men ko rej aikuji āinwōt wa, kapok kein jikuul, nuknuk, jikin jokwe, ak mōñā, im bwe ren bōk kuṃaer ilo men kein.

[Powerful Voices \(Ainikien Re Kajoor\)](#) (206) 860-1026

1620 18th Ave. Ste. 100 Seattle, WA 98122

Būrookraam ko ilo jikuul im ilo summer, būrookraam ko ñan kakajoor ṃanit ko an armej, būrookraam ñan jipañ kapok job, im kōnono ilo etan armej ñan ro rej kōrā kab jōdikdik me re jaje eļāññe er eṃṃaan ak kōrā.

[Puget Sound Adlerian Society](#) (206) 527-2566

Ewor juon class ejjeļok oṃean me 14 awa aetoken im ej kōn wāween an parent Kauweik nejier ilo wāween eṃṃan im ej karōke juon online Parenting Event Calendar, kab ej jermal ippān bar jet kumi ñan katakin parent ro im kōmṃan aer class ilo jikin eo an Central Puget Sound.

[Reconnect to Opportunity \(Bar Lale Iien Emman\)](#) (206) 263-8244

Ej jipañ jōdikdik me 16 ļok ñan 24 aer iio bwe ren wanṃaanļok ilo education. Kab rej jipañ armej ilo aer ļoor job im jermal ko raar kāālōti.

[Renton Area Youth & Family Services \(Jipañ Ñan Jōdikdik & Baamle ilo Bukwōn eo an Renton\)](#) (425)

271-5600 or (206) 772-2050

1025 South 3rd St. Renton, WA 98057 and 12704 76th Ave. S. Seattle, WA 98178

Jikin taktō an baamle ko kab leļok counseling ñan ro rej aikuji jipañ kōn ṃanit ko aer. Case management im bōbrae jorrāan ko ñan jōdikdik jān būrookraam eo an SPARK T.H.I.S..

[Ryther](#) (206) 525-5050

2400 NE 95th St. Seattle, WA 98115

Therapy im counseling ñan jōdikdik im men in kaṃadṃōd im jipañ ñan jōdikdik me rej autistic im eṃōj an taktō ba bwe rej ADHD (Attention Deficit Hyperactivity Disorder, Ñe Ajri e Jaje Jijet im Tōt Wōt). Rej lale aikuji ko an ro re jorrāan jān wūno ko rekajoor im rej jipañ jōdikdik ro raar jorrāan jān kain eo.

[SafeFutures Youth Center \(Jikin Jōdikdik Bwe en Safe Ilju im Jekļaj\)](#) (206) 938-9606

6337 35th Ave. SW Seattle, WA 98126

Būrookraam ko me rej kaorōk ṃanit ko an armej ke ej kajjioñ jipañ jōdikdik bwe ren jab kōmṃan nana im juen pād ilo jikin ekajet an jōdikdik im jipañ ro im eṃōj aer pād ie. Wōpij eo aer ej ilo West Seattle ak rej jermal ilo aolep jikin ilo King County. Rej jipañ bwe en eṃṃan an jōdikdik jikuul, leļok ro rej wan joñak ñan er, kōnono ilo etaer, case management, im bar jet aikuji.

[SeaMar](#)

Elōñ jikin

Ej jipañ armej ilo Kajin Pālle im Kajin Spanish. Ewor būrookraam ñan ro rej Latinx ñan jipañ er ilo jikuul.

Ewor case management, jipaň bwe ren jikuul, counseling kōn wūno ko rekajoor im dān in kadek, counseling ñan baamle, jipaň kōn taktō im kōn jikin jokwe ñan jodikdik me rej pād ilo iien ekajet an jodikdik, ajri ilo middle school me repaak ñan suspend, im ro me re jorrāan kōn an wor ire im manman armej ilo jukjuk in pād eo. Rej barāinwōt jipaň jodikdik ñan kapok job, katak im men ko re maroň kōmmani ñe emōj jikuul, im jikin jermal ilo jukjuk in pād eo.

[Seattle Children's \(Jikin Jipaň Ajri ilo Seattle\)](#) (206) 987-2000

4800 Sand Point Way NE Seattle, WA

Ewor class ñan parent im ewor doulul ñan riełok parent, ewor katak ko ñan rūtto kōn wāween jipaň jodikdik ilo aer rūttołok, im men in jipaň kōn education. Ewor jipaň ñan baamle ko me ewor jodikdik me ewor aer utamwe.

[Sound](#) (206) 901-2000

6400 Southcenter Blvd. Tukwila, WA 98188

Bwijen kain jipaň ñan jodikdik. Ewor jipaň ñan ro re jab ilo hospital, ro ilo jukjuk in pād eo, im ro ilo jikuul. Ewor therapy ñan jipaň parent, armej, doulul ko, emman im kōrā ippān doon, im baamle. Rej lale aikuj ko, kōmman case management, jipaň ñe jorrāan ko rełap rej wałok, jipaň ro re utamwe ilo kōlmānłokjeň, im ro rej aikuj jipaň kōn job im jikin jokwe. Ewor ro rej jermal ippān parent ro im rej letok counseling. Ewor jet kain jipaň ñan armej me jet jorrāan ko rełap raar jelōt er, im ñan ajri me ewor aer autism.

[Southeast Youth & Family Services \(Jikin Jipaň Jodikdik & Baamle ilo Rak-Reear\)](#) (206) 721-5542

3722 South Hudson Street Seattle, WA 98118

Ewor counseling, būrookraam ñan jipaň ajri im jodikdik ilo aer rūttołok. Ewor class kōn wāween pād ippān doon im mour, makūtkūt ko ñan kakajoor manit ko er, ikkure ko, im jipaň kōn jikuul. Ewor jipaň ñan baamle im parent āinwōt case management im counseling. Ewor būrookraam ñan jipaň ro rej itok jān Africa (case management, jipaň kapok job, im jipaň jelā im minene kōn manit ko re oktak). Būrookraam ñan Jipaň Ro rej Itok Jān Asia ej kōmman counseling, kōnono ilo etaer, lełok melele ko, refer er, jipaň ilo jorrāan ko rełap, kab case management, jipaň kapok job, im jipaň jelā im minene kōn manit ko re oktak. Ewor ro ri ukok.

[Southwest Youth & Family Services \(Jikin Jipaň Jodikdik & Baamle ilo Rak-Rillik\)](#) (206) 937-7680

4555 Delridge Way SW Seattle, WA 98106

Ewor therapy ñan jodikdik im baamle ke rej make iar, ilo doulul, ak ippān doon āinwōt juon baamle. Ilju im jekłaj Kāāl, ART, būrookraam ñan bōbrae an jodikdik kōkkure armej, bwijen kain jipaň ñan jodikdik, rej kōnono ilo etan armej im kōmman case management, būrookraam ko ñan ālikin jikuul, būrookraam ilo summer, im ikkure ko.

[Substance Abuse Hotline \(Jikin Call Kōn Armej me Rej Kajerbal Wūno Ko Rekajoor\)](#) (800) 662-4357

Rej jipaň armej 24/7, 365 raan aolep iiō bwe ren refer er ñan jikin kaładmōde aer jorrāan im lełok melele (ilo Kajin Palle im Kajin Spanish) im ej ñan armej im baamle me ewor aer problem ilo kōlmānłokjeň im/ak jorrāan jān wūno ko rekajoor.

[Suicide Crisis Text Line \(Jikin Text Ñe Juon Armej Ej Lōmṅak in Bōk An Mour\)](#)

Ewor jipaň 24 awa aolep raan ilo US ñe kwōj text START ñan 741741. Kwōn text ñan juon Crisis Counselor (Armej ñan counsel ilo iien jorrāan), me emōj an katak bwe en jelā jipaň armej me rej inepata im lōmṅak in make kōkkure er, bwe ren aenōmman łok, im ej kōmman men in kōn an roñjake innām jipaň armej eo lōmṅak kōn wāween kaładmōde problem eo.

[TeamChild](#) (206) 322-2444

1225 S. Weller Ste 420 Seattle, WA 98144

Jikin ilo Seattle im Kent ñan jipań armej seal record ko. Rej kōnono ilo etan armej imaan kien ñe ewor apań ainwōt kōn jikuu!, jikin jokwe, foster care, ñe e jańin tōprak aikuj ko an ājmour, im jipań kōn men ko ilo kien.

[Teen Clinics by Seattle and King County Public Health \(Clinic ko Ñan Teen me Seattle im King County Public Health ej Kōmmani\)](#)

Auburn, Eastbay, Federal Way, Kent

Men in jipań ko ejjeļok oņean ak edik oņean ñan teen ro mae iien 21 aer iiō. Ewor condom (rōba) ejjeļok oņean, men in bōbrae bōrōro, teej kōn nańinmej an likao im jiroń im kōn HIV, Plan B (wūno eo me lio ej idaak raan eo ālikin an kar tape bwe en jab būrōro), teej in bōrōro, im meļeļe ko kōn ājmour ilo men ko kōn likao im jiroń pād ippān doon.

[Teen Link](#) (866) 833-6546

Jipań ilo telephone ñan teen ro, im re ban kwaļok etan armej eo ej call. Ilo jota 6: 00pm- 10: 00pm.

[TXT 4 HELP](#) 44357

Ilo aolepen America, teen ro me ewor aer problem re maroń text tok iumwin 24-hour. Armej re maroń kapok jipań ak jikin bwe ren safe ñe ewor armej me etan man er, ro rej ire, jorrāān ko ilo baamle, eļap būromōj, ļōmņak in make bōk aer mour, im men ko jet. TXT 4 HELP counselor ro re maroń jipań kōn text, im re maroń kwaļok bar jet ļōmņak bwe en wor jipań mōkaj. Text naan eo “safe” im ijo kwōj pād ie kiiō (address, jikin kweilok, state) ñan 4HELP (44357). Ilo second wōt, enaaj iwōj juon message kōn juon Safe Place (Jikin kwō maroń safe) epaake eok im juon phone nōmba ñan juon doulul in jipań ļodikdik ilo bukwōn ñe am. Ñan jipań kiiō, kwōn uwaak kōn naan eo “2chat” bwe kwōn text ippān juon armej me emōj an katak bwe en jeļā counsel armej.

[Therapeutic Health Services \(THS, Jikin Jipań kōn Ājmour\)](#) (206) 323-0930

Elōń jikin

Bwijen kain men in jipań, būrookraam ko ñan jipań ro re jorrāān kōn wūno ko rekajoor im kōn ro re utamwe ilo kōmānļokjeņ, juon Doulul in Jipań Parent me rej Kajin Spanish im ej jermal iumwin 5 wiik ñan jipań ñe ewor ļodikdik me re jorrāān. Ewor jipań ilo jikuu! ilo Madrona Middle School im Garfield High School ainwōt lale aikuj ko an ļodikdik, jipań ñe e waļok jorrāān ko reļap, counseling ñan armej im kumi, men in bōbrae manman armej im pād ilo gang, kapok jikin jipań ko, im katak ko ñan mour ñan ļodikdik ro me rej ri Africa.

[Urban Artworks \(Jińa ñan ro ilo Jikinkweilok\)](#)

Inscape Arts Building 815 Seattle Blvd S Ste B7 Seattle, WA 98134

Juon būrookraam ñan ālikin jikuu! im ñan intern ippān armej ñan kōmman jińa ilo kiin em, kapok job, būrookraam ilo summer, kōjparok men in jińa, im būrookraam ñan katak ippān ro re mōkade. **EET** būrookraam partner ñan jipań ļodikdik me rej probation.

[Urban Impact \(Jipań ñan ro ilo Jikinkweilok\)](#) (206) 722-2052

7728 Rainier Ave. S Seattle, WA 98118

Ewor jet jikin ilo Seattle jān Central District eo ñan White Center me rej tutor ri jikuu! ro me raar itok jān la! ko jet, rej jipań baamle an ro rej ko tok (refugee), leļok ro renaaj wan jońak, jipań ālikin jikuu!, jipań jemān ajri bwe ren bōk kuņaer, im jipań ro ilo high school.

[Urban League of Metropolitan Seattle \(Kumi ilo Jikinkweilok in Seattle\)](#) (206) 461-3792

105 14th Ave. Ste 200 Seattle, WA 98122

Jipaň kōn education, kapok jikin jokwe, kapok job, jipaň jōdikdik bwe en wor tōprak ilo aer mour, im mačkūtkūt ko ñan likao im jiroň me rej ri kapeel ilo jermal ko aer.

[Valley Cities Counseling and Consultation \(Jikin Counseling ilo Valley Cities\)](#) (253) 833-7444

Elōň jikin ej pād ie

[Vashon Youth and Family Services \(Jikin Jipaň Jōdikdik im Baamle ilo Vashon\)](#) (206) 463-5511

20110 Vashon HWY SW Vashon, WA 98070

Ewor case management, counseling, jipaň ñan ro re jorrān jān wūno ko rekajoor, kapok aikuj ko, jikin bōk mōñā, jikin kōmman ñi, kōnono ilo etan armej, bōbrae an armej homeless, jipaň armej kōn jikin jokwe, jipaň ro re bōro, jipaň parent, jipaň ro rej Latinx, im bōbrae an armej ire im manman.

[Victim Support Services \(Jipaň Ñan ro Emōj Kōkkure Er\)](#) (800) 346-7555 (24-Hour helpline)

Moktałok raar ba Families & Friends of Violent Crime Victims (Baamle ro & Ro Mōttan ro Emōj Kōkkure Er). Ewor jikin jipaň ilo jukjuk in pād eo ñan ro re jorrān kōn an ro jet kōkkure kien ilo jabdewōt wāween.

[Washington Recovery Help Line \(Jikin Call ilo Washington ñan Jipaň\)](#) (866) 789-1511

Ewor jipaň kōn eñjake ko iumwin 24-hour im men in refer kōn armej ro re jorrān kōn wūno ko rekajoor, ro rej gamble (ikkure kōn jān), im ro im re utaṃwe ilo aer kōlmānłokjen.

[YMCA \(Young Man's Christian Association, Jikin Jipaň Jōdikdik\)](#)

Elōň jikin ej pād ie

Ewor jipaň ñan jōdikdik, likao, im jiroň, ñan kapok jikin jokwe, pepe kōn ilju im jekłaj, education im kapok job, jipaň baamle im foster care, counseling im therapy, jipaň armej bwe ren ri tōl, im bōbrae ire im manman armej.

[You Grow Girl \(Ledik, Kwōj Eddekłok\)](#) (206) 417-9904

2200 Rainier Ave S, Suite 201, Seattle, WA 98144

Camp ñan raan, doulul ko ñan jipaň armej kōn kapeel ko aer, jipaň armej pepe kōn jermal ko aer, case management, counseling ñan armej im baamle, katak ko bwe en emman an armej łōmnač, im doulul ko ñan jipaň ajri im jōdikdik me 7 aer iiō im rūttołok.

[Young Women Empowered \(Y We, Jiroň Me Re Kajoor ilo aer Mour\)](#) (206) 519-2426

2524 16th Avenue S. Suite #301 Seattle, WA 98144

Būrookraam ko an Y-WErej lełok wan joňak im kajoor ñan elōň jiroň, me 13-24 aer iiō, kab kōrā rūtto me renaaj wan joňak ñan armej ilo bukōn ko iturin Seattle. Y-We ej kōmman jet būrookraam me rej ekkar ñan manit ko an armej ro, im ej kōmman bwe ełap tokjān an kōrā im jiroň jermal ippān doon, kab ewor jet me rej wan joňak kōn men ko re aorōk.

[YouthCare](#) (800) 495-7802

Ej lełok jikin jokwe (shelter) ñan jōdikdik, im ej jipaň armej ilo iien ekajet an jōdikdik, jipaň bōbrae an armej homeless, ej lełok wan joňak remman ñan armej, im ej kōnono ilo etan armej ñe ewor ro raar kōkkure er ilo wāween ettoon im bōlen kōmmane bwe ren make jeraamman.

[Youth Eastside Services \(YES, Jikin Jipaň Jōdikdik me rej Reeaar\)](#) (425) 747-4937

Bellevue, Kirkland, im Redmond

Rej counsel ro im re utaṃwe ilo kōlmānłokjen, ro re jorrān kōn wūno ko rekajoor, ro rej aikuj

counseling im men in kamadmod kōn jet utamwe, jipañ kōn lōmḥak ko an armej, im education im bōbrae jorrāan an ajri, jodikdik im baamle ko ilo East King County. Re maroñ jipañ ilo Kajin Spanish.

[Youth and Family Clothing Shop at Juvenile Court \(Jikin an Jodikdik im Baamle Bōk Nuknuk ilo Mōn Ekajet an Jodikdik\)](#) (425) 531-1756

1211 E. Alder St. Seattle, WA 98122

Juon jikin bōk nuknuk, im ej ñan jabdewōt jodikdik me ej aikuji im ñan baamle ro me rej ilo iien ekajet an jodikdik.

[YouthSource](#) (206) 477-7010

Juon jikin me ej kōmḥan elōñ būrookraam ñan jiroñ im likao, 16 loḥ ñan 24 aer iiō, me raar jab kamōje high school. Būrookraam kein rej jipañ kōn education, kapok job, im jipañ bwe armej ren jelā tōl armej ro jet. Barāinwōt rej jipañ bwe jodikdik ren jelā kōn būrookraam ko jet, kōn men ko ilo jukjuk in pād eo bwe en emḥan mour, bwe ren pojak in bōk job, im aolep men kōn case management.

Kile Ro Raar Jipañ

Raar bōk mejelein jān “King County Juvenile Justice Resource Booklet (Book in Jipañ ro ilo King County me Rej Pād ilo Jikin Ekajet an Jodikdik)” developed by Juvenile Justice 101 (Jinoi Katak Kōn Ekajet Jodikdik), “A Family Guide to Pennsylvania’s Juvenile Justice System Developed by the Family Involvement Committee of the Pennsylvania Council of Chief Juvenile Probation Officers (Juon Book ñan Jipañ Baamle ko jelā kōn Jikin Ekajet Jodikdik ilo Pennsylvania, im juon Kumi an Baamle Me rej Bōk Kuḥaer ilo Kumi in Probation Officer ilo Pennsylvania)” imParents of Incarcerated Children Bill of Rights (Maroñ im Jiḥwe ko an Parent an Ajri Me Re Kalbuuj) jān Texas Juvenile Justice Division (Jikin Ekajet Jodikdik ilo Texas).

ZYD (Bwe en Ejjeḥok Jodikdik ilo Kalbuuj) kōmḥool ñan kumi kein kōn aer joḥok elōñ awa ilo aer āliji, kwaḥok lōmḥak ko aer, im pepe ippem: Court an Jodikdik me ej ilo Court eo e Utiej ilo King County, Tibaatmen an Ri Jojomar ilo King County, Wōpij an Ri Kinaakḥok eo an King County, Wōpij eo an Joñan an Emḥan Jerbal, Wāween Jerbal im Budget, Public Health an King County & Seattle, Tibaatmen an Jikin Kalbuuj an Rūtto im Jodikdik ilo King County, Best Starts for Kids (En Emḥan an Ajri Jino), Ra eo an Ājmour ilo Mani im Mourḥok ilo King County, Council eo an Baamle im Jodikdik ilo King County, Anita Asphy, Shalynn Coleman, Christal Fields, Alrick Hollingsworth, Karisa Morikawa, John Rogers, LaTonya Rogers, im Lynette Todd. Maketa Wilborn im Mari Shibuya raar kōmḥan pija ko.

Ikijien book in, bwe kwōn kwaḥoktok aḥ lōmḥak ak kajjitōk kōn book in, jouj im tōpar zydinfo@kingcounty.gov. Ñan mejele ko relapḥok kōn Zero Youth Detention (Bwe en Ejjeḥok Jodikdik ilo Kalbuuj), etal ñan zeroyouthdetention.com.