



## Eastrail Regional Advisory Council

Thursday, October 19, 2023 - 10:00 AM - 12:00 PM

Meeting will be held remotely via Zoom

10:00 AM – 10:05 AM **Introductions and Agenda Review**

- RAC Co-Chair/City of Kirkland Deputy Mayor Jay Arnold

10:05 AM – 10:10 AM **Approval of July 27, 2023 RAC Meeting Summary**

- RAC Co-Chair/City of Kirkland Deputy Mayor Jay Arnold

10:10 AM – 10:50 AM **Eastrail North and South Connections Vision and Actions (Information Item)**

- Emily Griffith, Snohomish County
- Jared Hill, City of Woodinville
- Cailin Hunsaker, City of Renton
- Curt Warber, King County Parks

10:50 AM – 11:20 AM **2024 RAC Event Scoping (Discussion and Direction Item)**

- RAC Co-Chair Kirkland Deputy Mayor Arnold
- Principals' Staff Team

11:20 AM – 11:30 AM **Cross-cutting Issues Look Ahead (Discussion and Direction Item)**

- RAC Co-Chair Kirkland Deputy Mayor Arnold

11:30 AM – 11:40 AM **Federal and State Funding Update – (Information Item)**

- Colin Petkus, Eastrail Partners

11:40 AM – 11:50 AM **Progress and Success Updates (Information Item)**

- RAC Members

11:50 AM – 12:00 PM **Public Comment**

- RAC Co-Chair Kirkland Deputy Mayor Jay Arnold

### Adjourn



# **EASTRAIL REGIONAL ADVISORY COUNCIL**

---

## **DRAFT MEETING SUMMARY**

July 27, 2023 | 10 AM – 12 PM

Sound Transit OMF East 1925 120<sup>th</sup> Ave NE, Bellevue

**Regional Advisory Council (RAC) Members Present:** Jay Arnold, Kirkland Deputy Mayor (Co-Chair), Sarah Perry, King County Councilmember, Claudia Balducci, King County Councilmember; John Stokes, Bellevue Councilmember; Christie True, Director, King County Department of Natural Resources and Parks; Jessica Forsythe, Redmond Council President; Ryan McIrvine, Renton Councilmember; Sharon Swan (alternate for Tom Teigen), Snohomish County; Vicky Clarke, Cascade Bicycle Club and Eastside Greenway Alliance

### **Welcome and Introductions**

King County Councilmember Sarah Perry called the meeting to order at 10:08 am, welcomed all in attendance to the third RAC meeting and the first in person meeting of 2023, and reviewed the agenda.

### **High-Capacity Transit Development and the Eastrail Corridor (Information Item)**

Don Billen, Sound Transit Director of Office of Capital Project Development, provided an overview of high-capacity transit development in the Eastrail Corridor.

- East Link 2 Line from Lynnwood to downtown Redmond is under construction and will open in phases starting in Spring 2024. I-90 Corridor Link across Lake Washington is undergoing reconstruction due to plinth issues, possible opening in 2025. Downtown Redmond Link is under construction, possibly opening in 2025 as an extension of the Starter Line or at the same time as I-90 Link.
- Future Eastside projects:
  - Bus rapid transit (BRT): S1 Line will run between Bellevue and Burien; S2 line will run between Bellevue and Lynnwood; and S3 line will run between Shoreline and Bothell.
  - NE 85th Inline Station construction starts in September 2023 to create a three-lane interchange with express toll lanes and a Stride stop in the center.
  - 4 Line from South Kirkland to Issaquah will open between 2041 and 2044.
- BRT project sequencing:
  - NE 85th Station opening in 2026 (ST Express Bus and some King County Metro service).
  - S1 Line (Bellevue to Burien): 2028, potentially late 2027.
  - S2 Line (Lynnwood to Bellevue): 2029, potentially 2028 depending on WSDOT express toll lane work.
  - S3 Line (Shoreline to Bothell): 2028, potentially 2027.
- All light rail stations have bike storage facilities and will be adding on-demand bike lockers. Redmond also has scooter share storage.

### **Approval of April 28, 2023 RAC meeting summary**

Deputy Mayor Arnold moved to approve the April 28 meeting summary and Christie True seconded.

**Members unanimously voted to approve the April 28 meeting summary.**

### **Cross-cultural Public Arts Project (Information and Discussion Item)**

Debbie Lacy of Eastside for All provided an update on the [Cross-Cultural Arts on the Eastrail](#) project, one

of twelve selected nationwide for the Fund to Foster Belonging grant.

- Debbie was invited to be part of a Cohort for Belonging through Welcoming America which receives priority consideration for [Fund to Foster Belonging grants](#). The Cross-Cultural Arts on the Eastrail project's goals are to bring communities together to define and shape a cross-cultural vision for public arts on the Eastrail. In partnership with Eastrail Partners, they will be co-creating an "inclusive call for artists" process and community art installation as part of Welcoming Week September 8 – 17, as well as a model for future public art along the Eastrail.
- Themes that have emerged from the process so far include storytelling, dance/drumming, nature, education and learning from each other, rooting in history (of the land, people), multilingual (literal and cultural meanings), youth included/leading.

### **Federal and State Engagement (Information Item)**

Katherine Hollis of Eastrail Partners and David St. John of King County Department of Natural Resources & Parks provided updates on federal and state engagement.

#### *Federal*

- Staffers from congressional offices (Senators Murray and Cantwell, Representatives DelBene, Smith, and potentially Larsen) will visit 1-90 Steel Bridge trail segment project area on August 15. Eastrail Partners will share event information in advance.
- RAISE Grants: 2023 funding awards were announced; Washington had the highest number of projects funded nationwide and received the most funding of any state.
  - Big Quilcene River Bridge Replacement Project: \$25M
  - Upland Village Relocation Road Project: \$25M
  - Airport Drive and Spotted Road Safety Multimodal Improvements: \$22.8M
  - West Side Transformation Multimodal Connections to Shoreline South Regional Transit Hub: \$20M
  - Puget Sound to Pacific Planning for Multiuse Trail: \$16.13M
  - Bell Road-BNSF Railway Grade Separation: \$9.5M
  - Port Orchard Breakwater Replacement: \$9.4M
  - Planning for Low Emission Neighborhoods: \$1.2M
  - \$25M King County Metro South Base Electrification Project was not funded by RAISE but was funded at \$33M through a different federal fund source.
  - Woodinville's \$5M Eastrail planning grant was not funded by RAISE but working with King County to explore alternative funding sources.
  - King County Parks will submit a \$25M proposal in 2024 for the I-90 trail segment.
- Safe Streets for All (SS4A): Bellevue and King County have applied for a project to make trail and crossing improvements leveraging Amazon donation.

#### *State*

- Move Ahead WA funding: \$29M total
  - \$6M for Wilburton Trestle 23-25
  - \$7.5M for I-90 Trail segment 25-27
  - \$4.5M for 1-90 Trail segment 27-29
  - \$6M for Coulon Park acquisition (\$3M 23-25, \$3M 25-27)
  - \$5M for Woodinville SR202 and Trestle Widening 27-29
- Eastrail Partners unsuccessfully advocated to advance funding allocated in future biennia so some Eastrail projects could get started sooner. However, they worked with Senator Liias to clarify reimbursement language in the state budget bill allowing projects that start early to be

reimbursed in the biennium in which their funding is allocated. There are still some necessary language clarifications and Eastrail Partners will continue to partner with jurisdictional partners on this.

### **Progress and Success Updates (Information Item)**

Kirkland – Totem Lake Connector bike/ped bridge opened with a celebration on July 8. Sustainability Ambassadors (youth leadership program focused on climate change and sustainability) organized an Earth Day bike ride through Kirkland with 50 elementary to high school-aged kids with educational stops along the way to discuss making biking to school “safe, easy, and cool” with Eastrail as a highlight.

Eastside Greenway Alliance – praised the partnership and collaboration with Eastrail Partners in advocating for trail development and funding. They are expecting that legislators will work on legislative fixes to get Move Ahead WA funding moving more quickly during next session.

Snohomish County – continuing to work through legal issues related to securing railroad rights access and ownership to be able to eventually connect to Centennial Trail and Skagit County. Will be looking for funding to support design of a 12-mile trail corridor next year.

Redmond – RCCIII is at 60% design and will be 90% by the fall. PSE has received permits for transmission line work that will be the basis for Eastrail and work will be completed within fish windows to avoid environmental impacts. Redmond City Council will vote soon to annex a small slice of Eastrail owned by Redmond but within King County jurisdiction so it is fully under Redmond’s jurisdiction.

King County – NE 8<sup>th</sup> Bridge cannot open in October as planned due to steel handrail delays so will plan to open early next year. Wilburton Trestle will be going out to bid this year. King County is directing \$2M to I-90 Steel Bridge design though more is needed to reach 60% design and is exploring options for additional funding. King County also wants to use the I-90 Steel Bridge for temporary wastewater routing as the current wastewater interceptor is experiencing erosion. Continuing to work with BNSF and other partners on connections in the south end.

Renton – Coulon Trestle Replacement Project will be completed in September.

Bellevue – planning for Wilburton area in Bellevue and Eastrail is a great asset that people are excited about. Submitted Transportation Alternative Program grant application to construct a connection between the Mountains to Sound Greenway Trail and future Eastrail which supports collaborative efforts with King County to design, plan, and construct the I-90 crossing.

Woodinville – Councilmember Rubstello is no longer able to serve on the RAC but City Council will select a new designee at their August 1 meeting. Expressed gratitude for \$5M in Move Ahead WA funding and they are working with King County to accelerate funding to ensure they don’t lose federal funding. After seven years, the Federal Transportation Safety Board approved their rule making decision so City Council can select a rail tie removal contractor and begin pedestrian bridge design over the 131<sup>st</sup> Ave entrance to Woodinville. Abandoned railway and trestle will also be repurposed as a culvert to allow fish passage in Little Bear Creek. There will be a celebratory rail spike removal ceremony September 6 at 11am. Special invitations will go out to Councilmember Perry’s office, RAC members, and other stakeholders.

Eastrail Partners – Eastrail Ale (collaboration with Chainline Brewing) is on tap at Chainline Station with proceeds going to Eastrail Partners. There will be a ribbon cutting for the Northup Connector project September 7 from 4-6:30 pm followed by a party in the Spring District with REI and Meta. Eastrail

Partners will send out invitations soon. They are also working on unifying Eastrail.org, EastrailPartners.org, and the Eastside Greenway Alliance website and shared a preview of the [website](#) which they plan to launch in the next month.

**Public comment**

No public comment was registered as the facility could not accommodate public comments.

The meeting recording is available here: [2023 Meetings - King County](#). Interested parties should send comments to [eastrail@kingcounty.gov](mailto:eastrail@kingcounty.gov). Joe Inslee will compile any additional comments received.

**Next steps and adjournment**

The date of the next RAC meeting is October 19. Staff will send out meeting registration information in advance. The meeting adjourned at 11:41 am.

DRAFT



Let's Connect

# North and South Connections

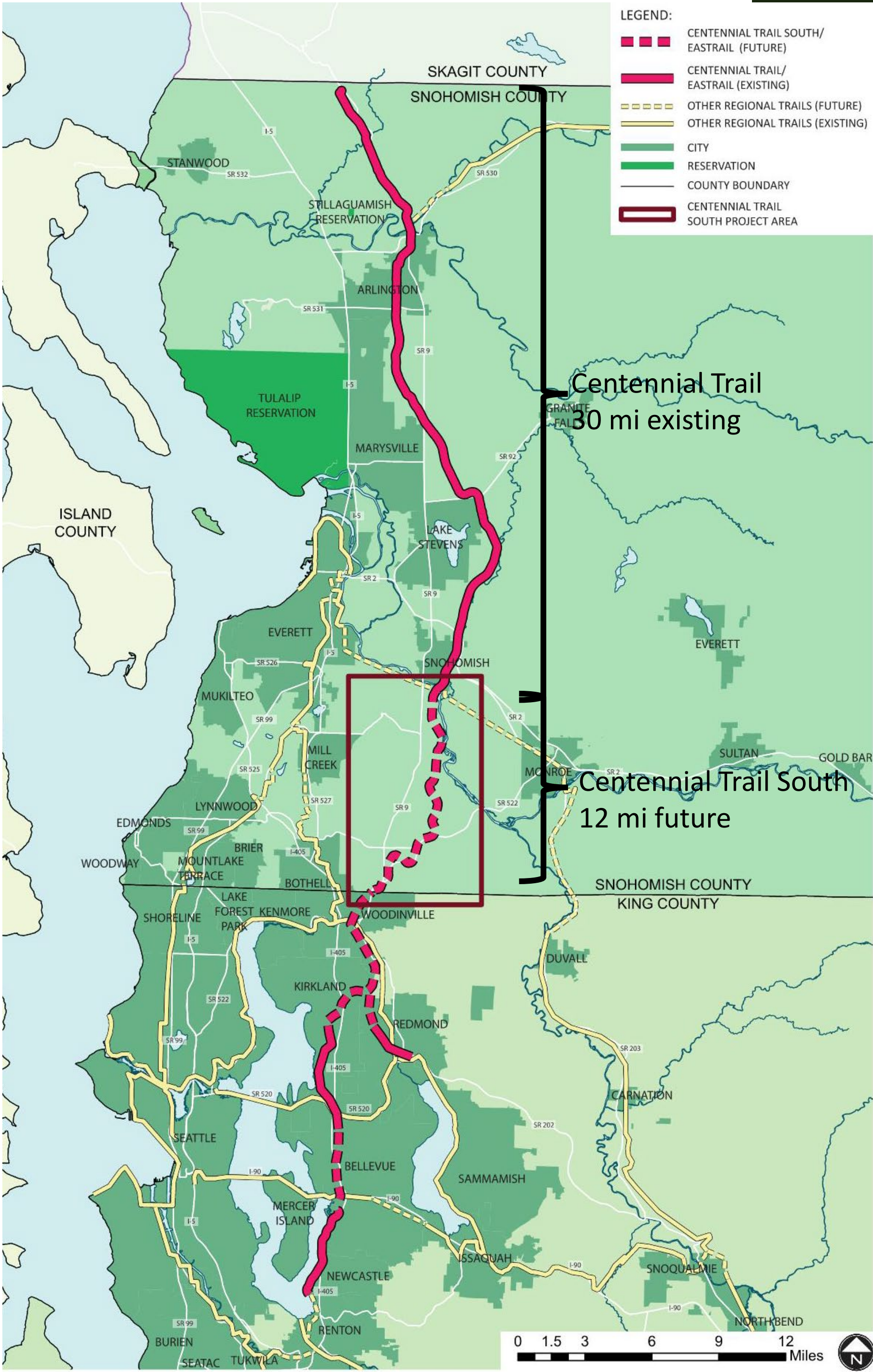
*Presentation for RAC Meeting*

*October 19, 2023*



# Eastrail Vision

- Ultimately 72 miles of continuous shared-use trail
- Connecting 3 counties, 9 cities, and tens of thousands of residents
- Today's Focus is on the visions for the north and south ends of the corridor
  - Snohomish County
  - Woodinville
  - Renton



# Snohomish County – Centennial Trail Vision & Opportunities

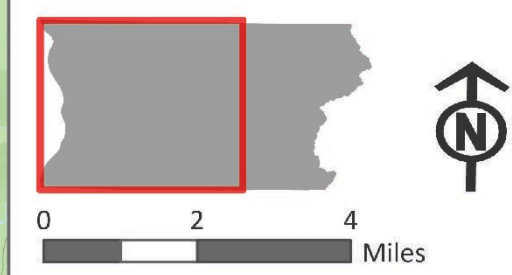
- 12-mile rail-to-trail extension of Centennial Trail
- 42 miles of continuous, shared-use trail running the length of county
- Major north-south spine of Snohomish County regional trail network
- Nexus with other regional trails
- Connection
  - Create safer routes for non-motorized transportation in this area of the county
  - Connect south central Snohomish County to transit
  - Connect rural Snohomish County to regional growth centers



# SNOHOMISH COUNTY PARKS REGIONAL TRAILS OVERVIEW MAP

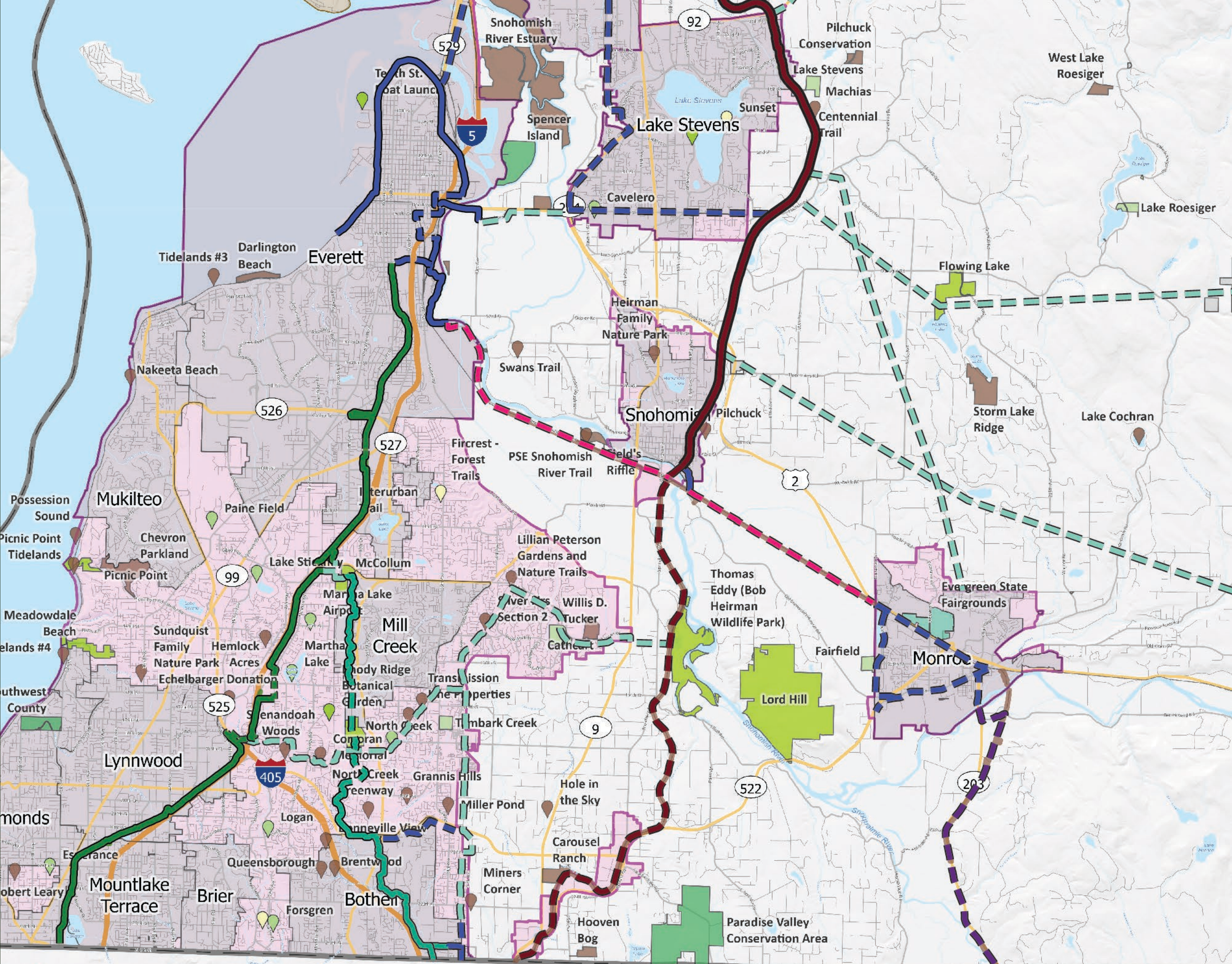
- Regional Trails**
- Centennial Trail (Existing)
  - Whitehorse Trail (Existing)
  - Interurban Trail (Existing)
  - North Creek Trail (Existing)
  - Snohomish River Trail (Future)
  - Monroe-Snoqualmie Valley Trail (Future)
  - Other Sno.Co. Trails (Existing)
  - Other Jurisdiction Trails (Existing)
  - Centennial Trail (Future)
  - Whitehorse Trail (Future)
  - Interurban Trail (Future)
  - North Creek Trail (Future)
  - Other Sno.Co. Regional Trails (Future)
  - Other Jurisdiction Trails (Future)

- Community Park
- Neighborhood Park
- Open Space / Preserve
- Regional Park
- Special Use
- Undeveloped Parks
- Parks Less Than 35 Acres (Fill Color by Park Type)
- County Boundary
- Incorporated City
- Urban Growth Area
- Tulalip Reservation
- Stillaguamish Reservation
- Consolidated Borough of Quil Ceda Village
- Lakes
- Streams
- National Forest
- Railroad
- Interstate
- State Route
- Arterial
- Local



04/04/2023













## ***Snohomish County – Centennial Trail Challenges***

- Funding – estimated corridor cost as of 2022 - \$125M
- Currently pursuing railbanked status
- 12 miles of corridor
- 13 at-grade crossings
- 8 elevated crossings/bridges including:
  - 0.3 miles trestle and historic railroad bridge crossing active BNSF line and Snohomish River
  - 3 trestles over wetlands/fields
  - 2 steep slopes
  - 1 crossing over road
  - 1 crossing over SR 522



# ***Snohomish County – Centennial Trail Next Steps***

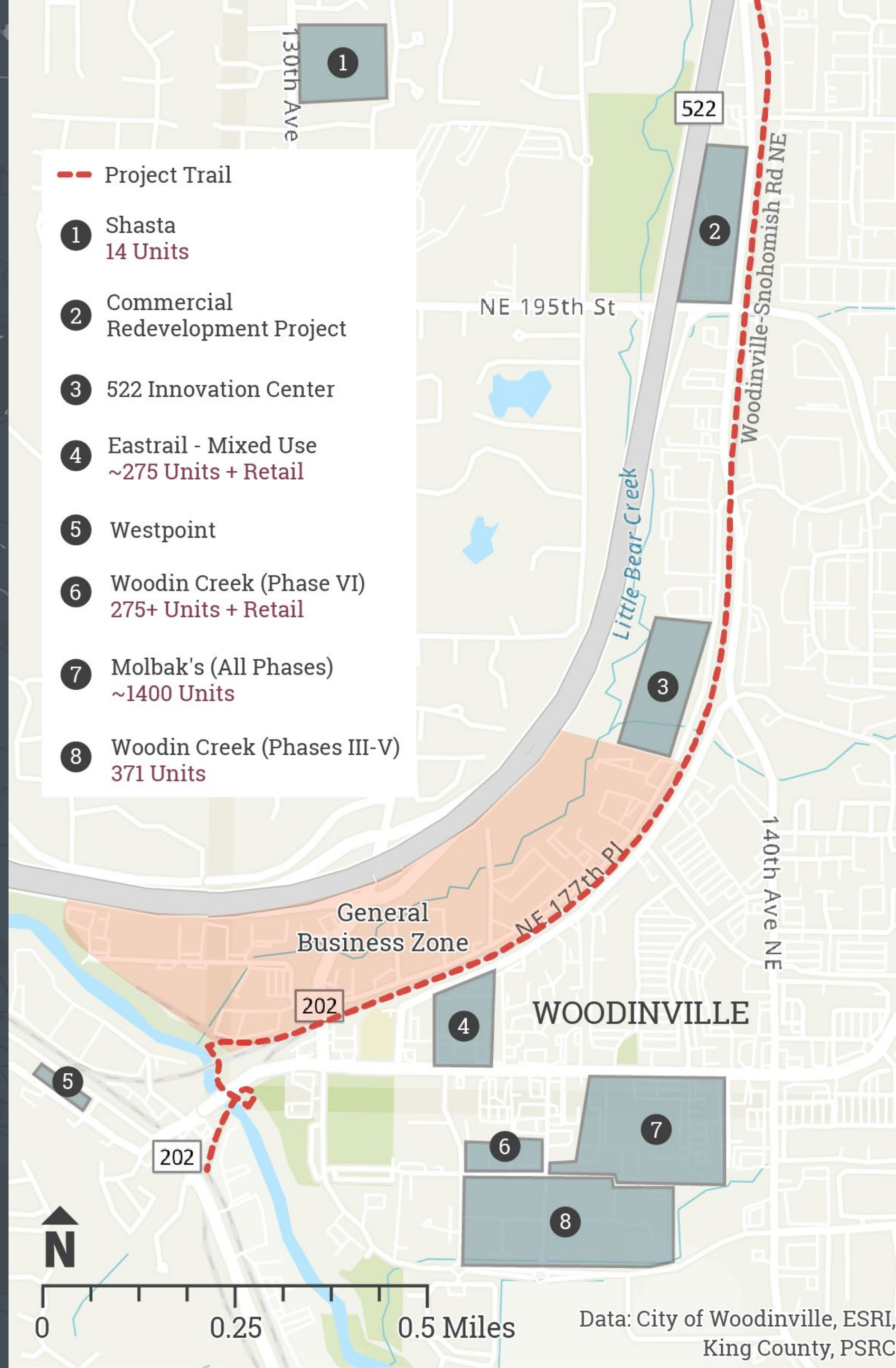
- Resolve property issues
- Applied for Reconnecting Communities and Neighborhoods (RCN) Grant September 2023
- Looking ahead - hire a consultant team to re-start Design and Planning, including a phasing and funding plan



# City of Woodinville

- Golden Spike Removal Ceremony for railbanking decision in September
- Rail ties have now been removed and are being salvaged or saved for possible art installations along corridor
- Community Partnership Fund presented by Congresswoman DelBene and funding opportunities continue to be pursued





# City of Woodinville

- Eastrail will serve as the centerpiece of an anticipated 30% growth in the next ten years.
- Runs directly behind the downtown corridor and along Little Bear Creek.
- Area is currently zoned as General Business “GB” which mainly includes light industrial use.
- Council is beginning discussions on increased recreation such as a linear park and possible rezoning to allow for mixed-use affordable housing developments



## *City of Woodinville*

- Completion of the project will enhance regional mobility for vehicles, bicycles, pedestrian, and transit users in downtown Woodinville (NE 175<sup>th</sup>)
- Eastrail Flats, Molbak's Home and Garden, Woodin Creek Village expansion (1,500 + new units)





## SR 202 Pedestrian Bridge: Option 2



## *City of Woodinville*

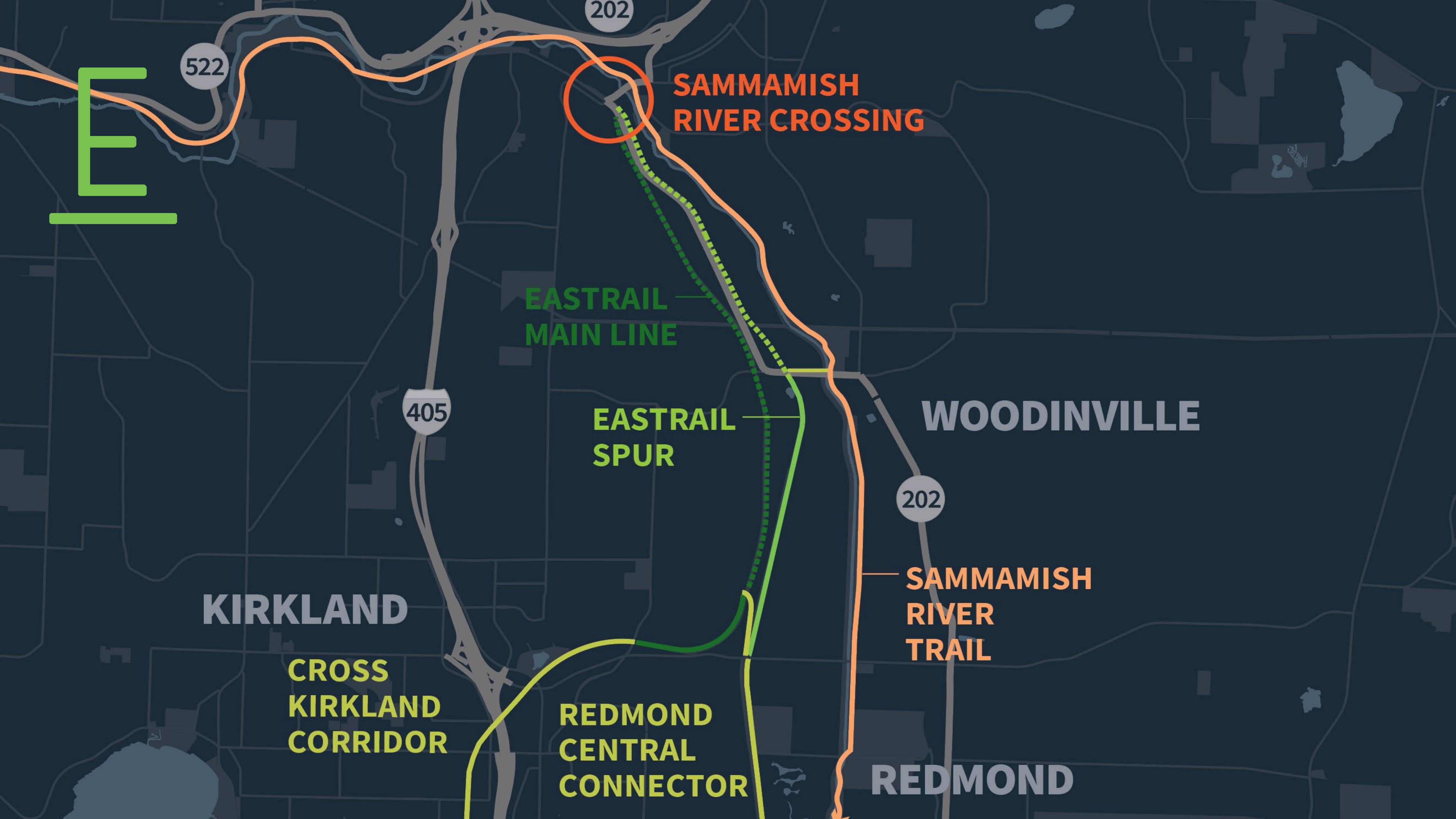
- New Pedestrian Bridge Selected! Extensive public outreach and discussion took place this summer
- Existing trestle being reused as a fish passable culvert on Little Bear Creek
- Will incorporate rail ties and components of former rail line

E



## *King County*

- Three parallel trail corridors in Woodinville:
  - *Woodinville Spur (partially completed interim trail)*
  - *Woodinville segment of the Main Line*
  - *Sammamish River Trail*



E

522

202

SAMMAMISH RIVER CROSSING

EASTRAIL MAIN LINE

405

EASTRAIL SPUR

202

WOODINVILLE

SAMMAMISH RIVER TRAIL

KIRKLAND

CROSS KIRKLAND CORRIDOR

REDMOND CENTRAL CONNECTOR

REDMOND

**EASTRAIL**

**WOODINVILLE  
SR 202 TRESTLE**

**SAMMAMISH  
RIVER TRESTLE**

**SAMMAMISH  
RIVER TRAIL**

**EASTRAIL  
SPUR**

**EASTRAIL  
MAIN LINE**

**E**



E

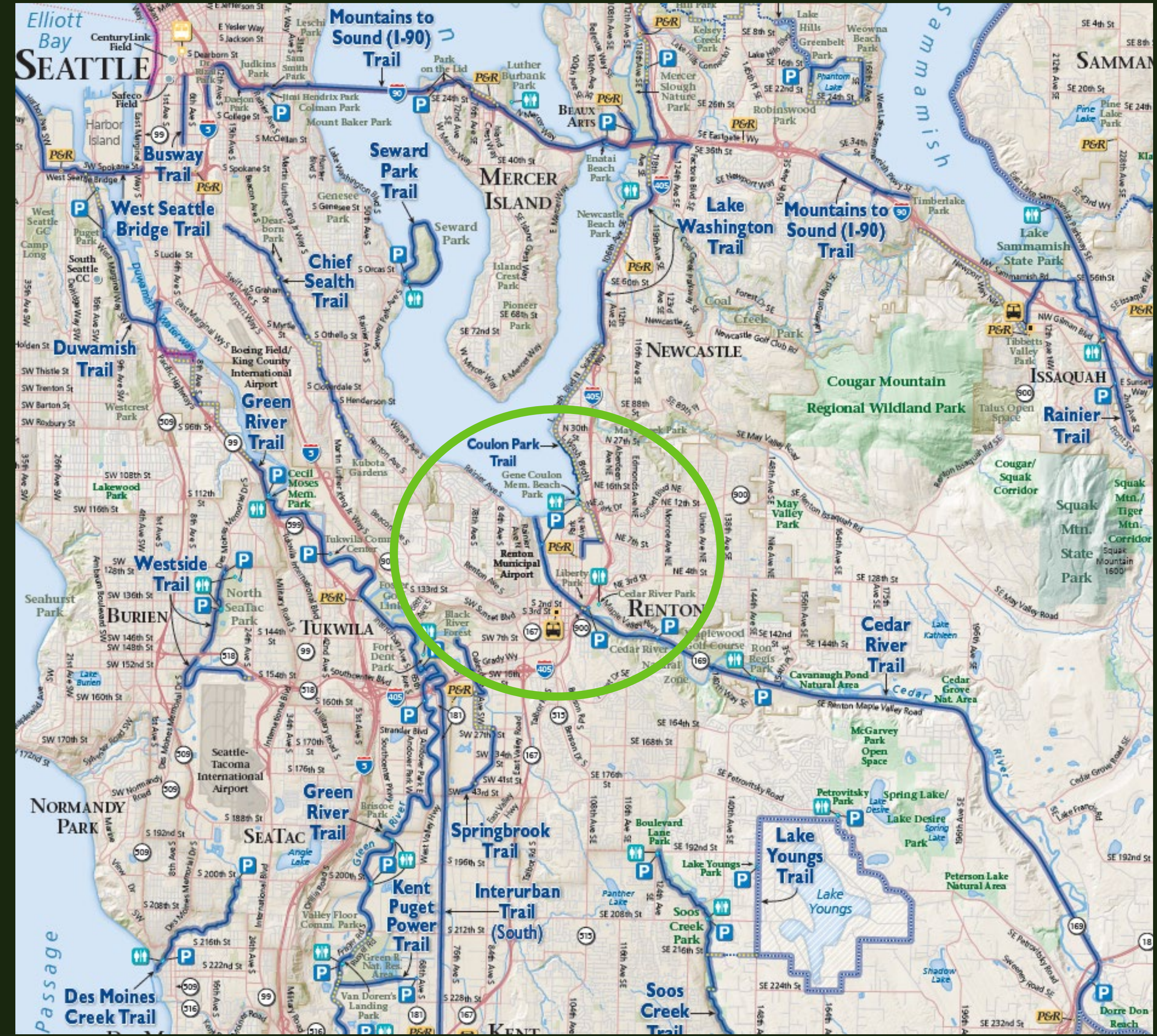


## *King County*

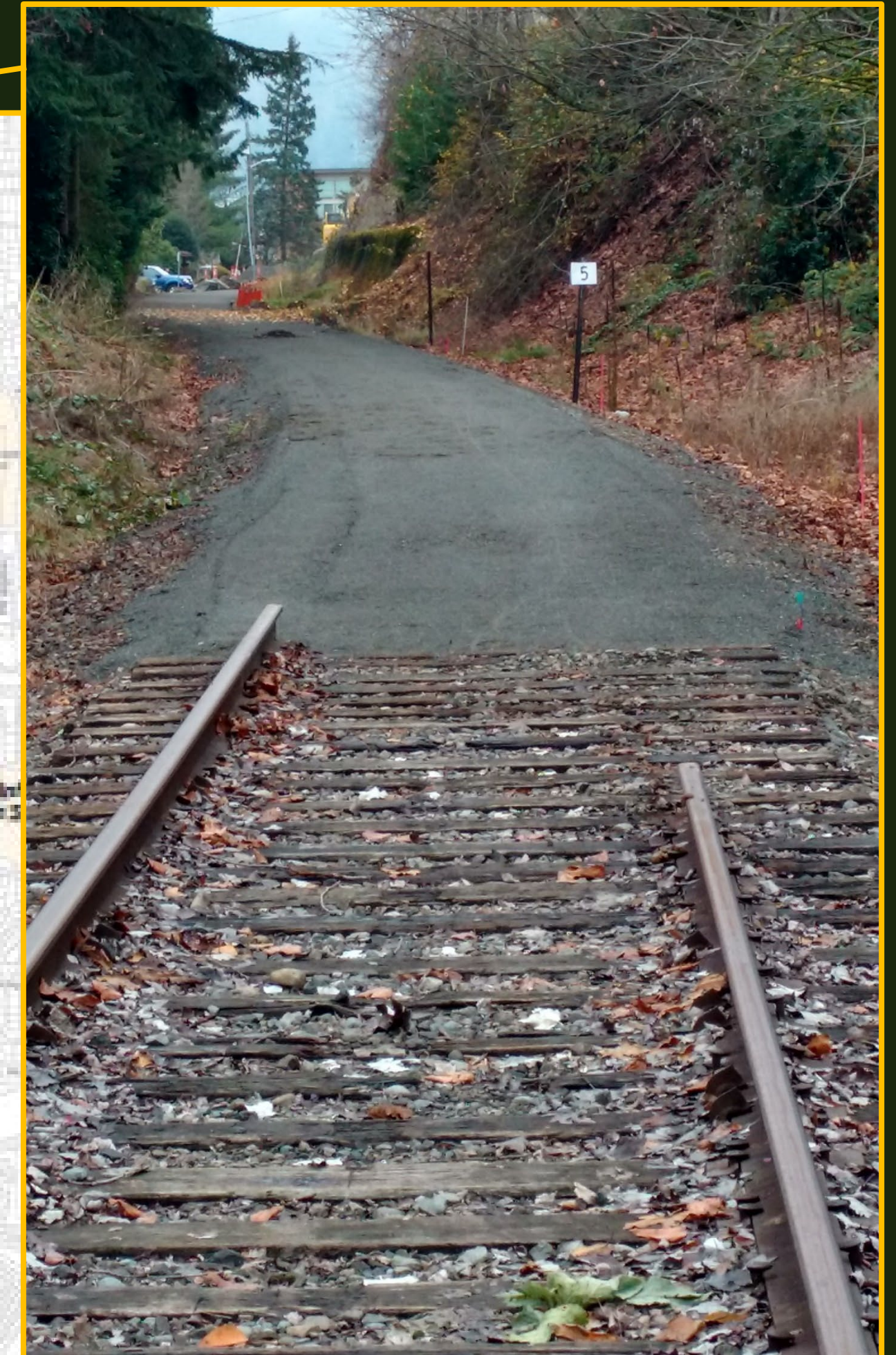
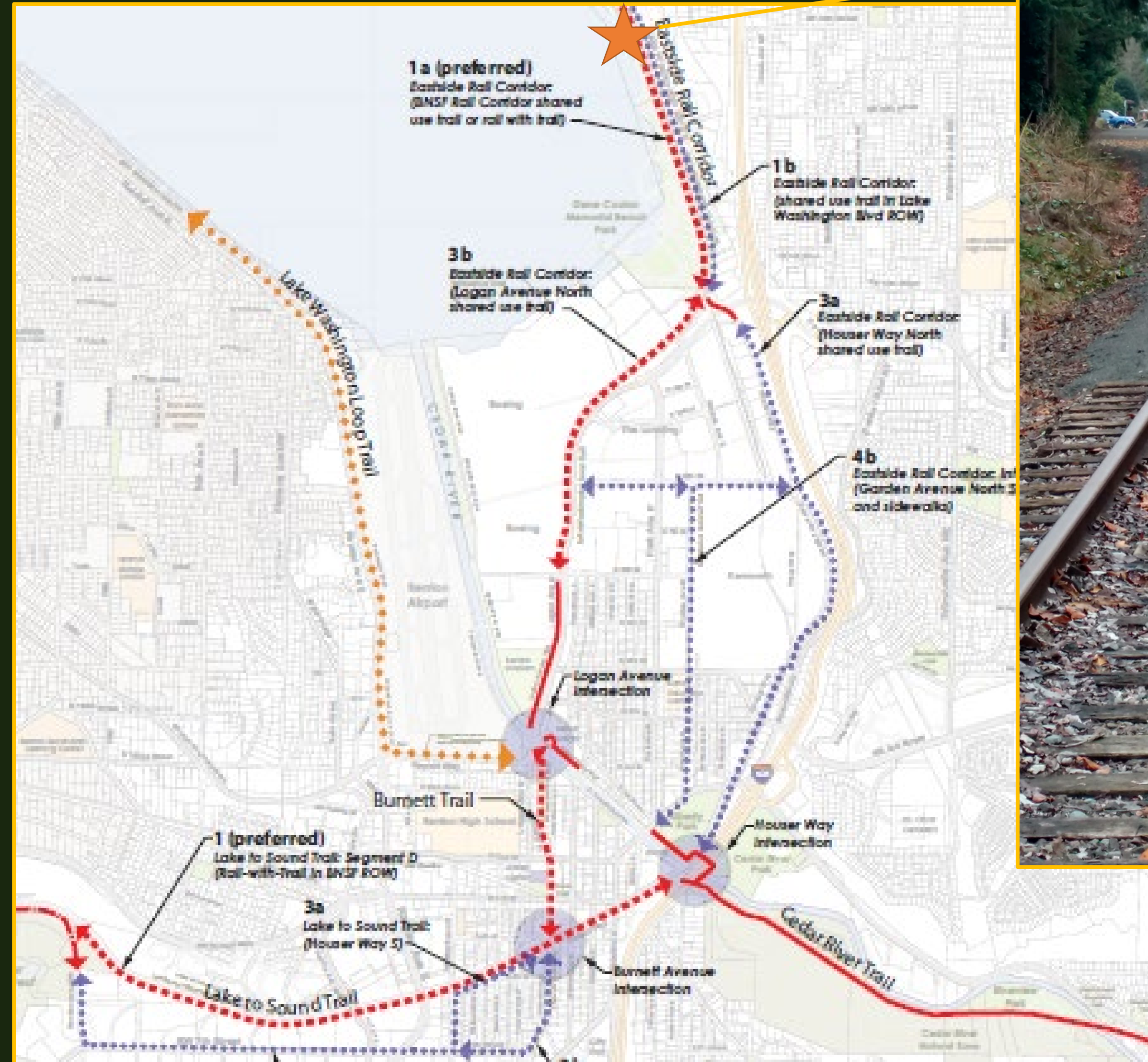
- Master Plan envisioned fully paved trails for both the Main Line and Spur
- Community conversations at that time prioritized the Spur for development
- Woodinville/SnoCo development is an opportunity for City and County to collaborate on a future vision for the County-owned trail.



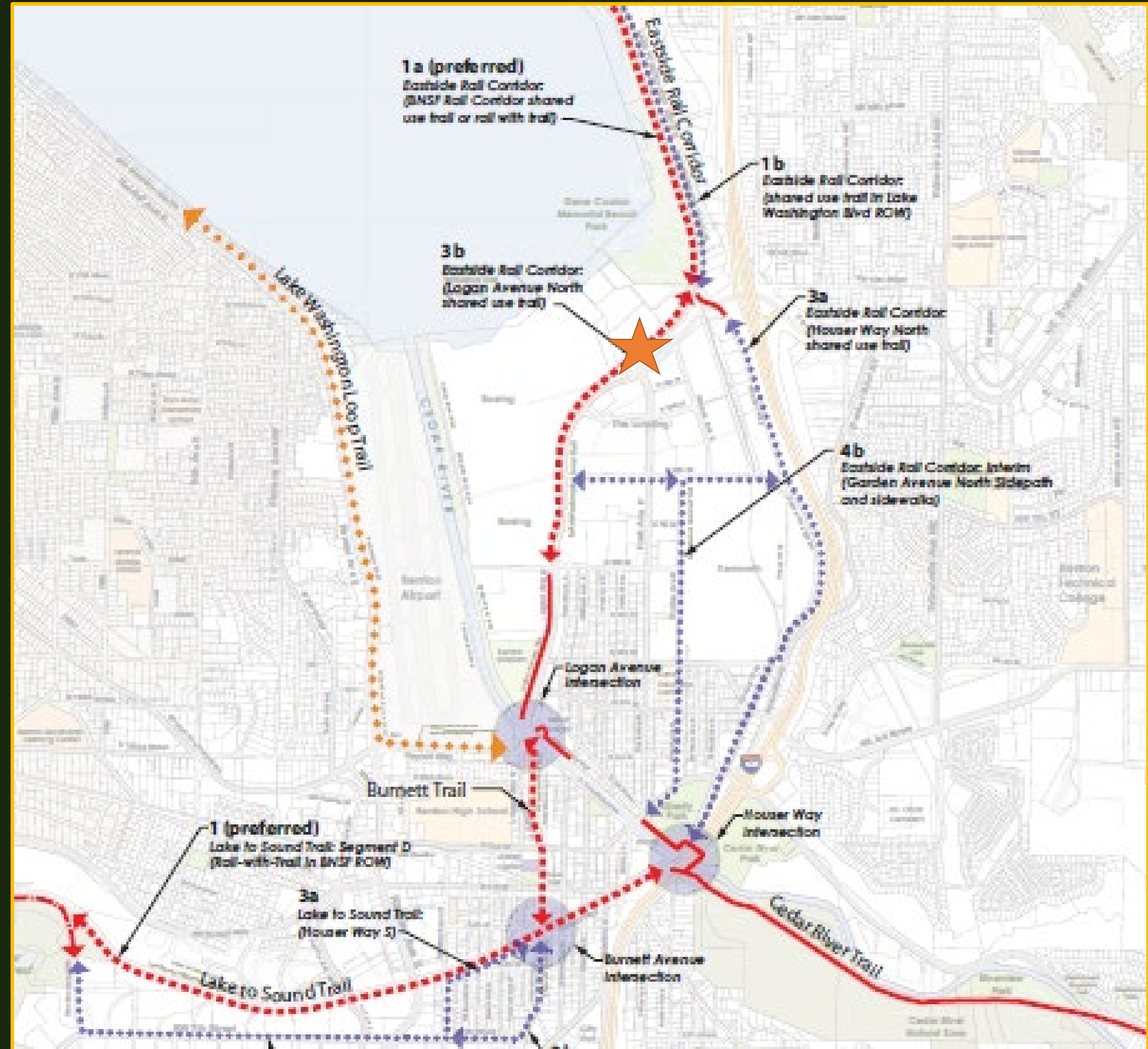
# Eastrail Corridor South and Regional Connections



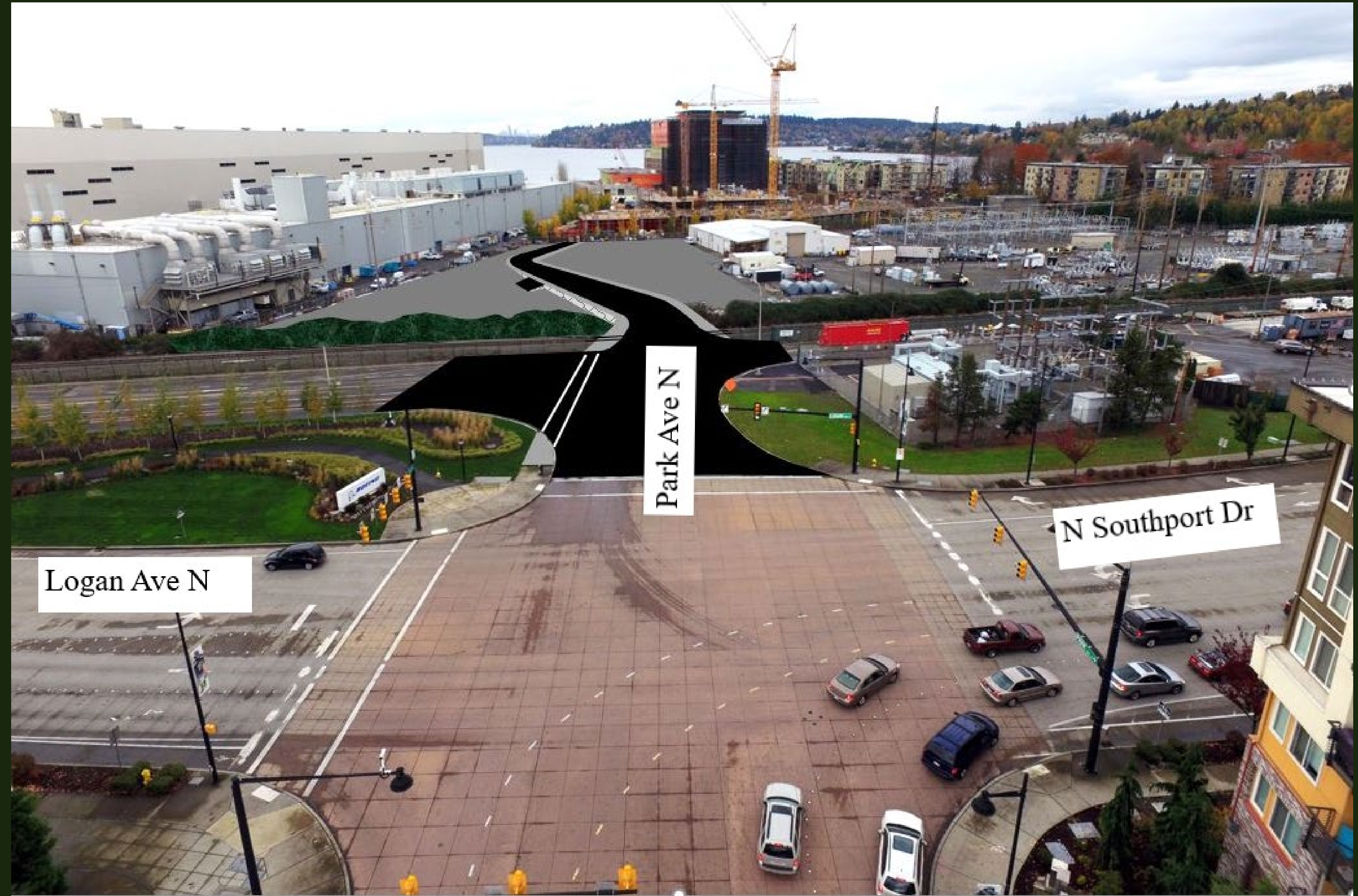
# Burlington Northern Mile Post 5 Next to Gene Coulon Memorial Beach Park



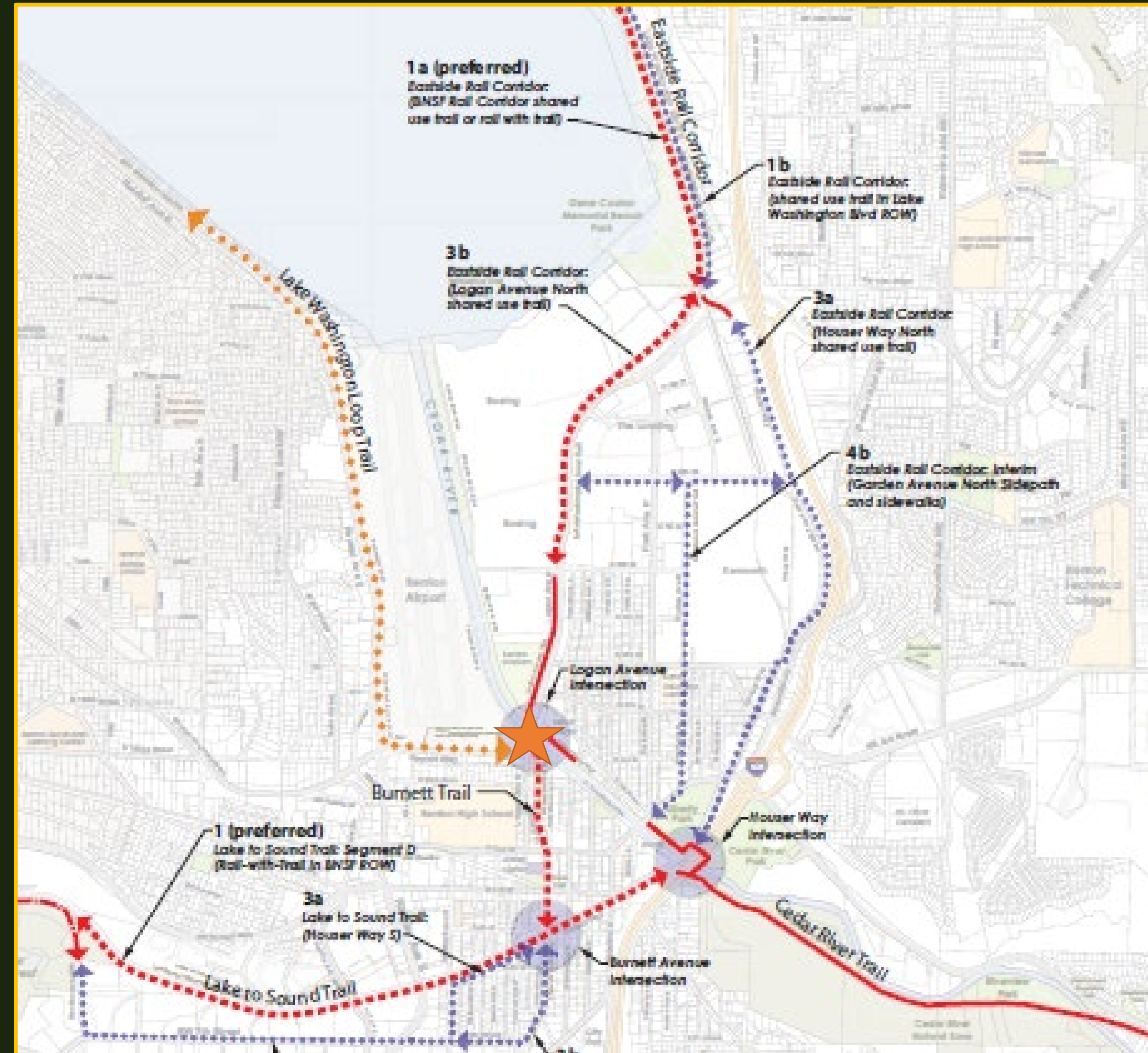
# Park Avenue North Gateway to Southport Business Center



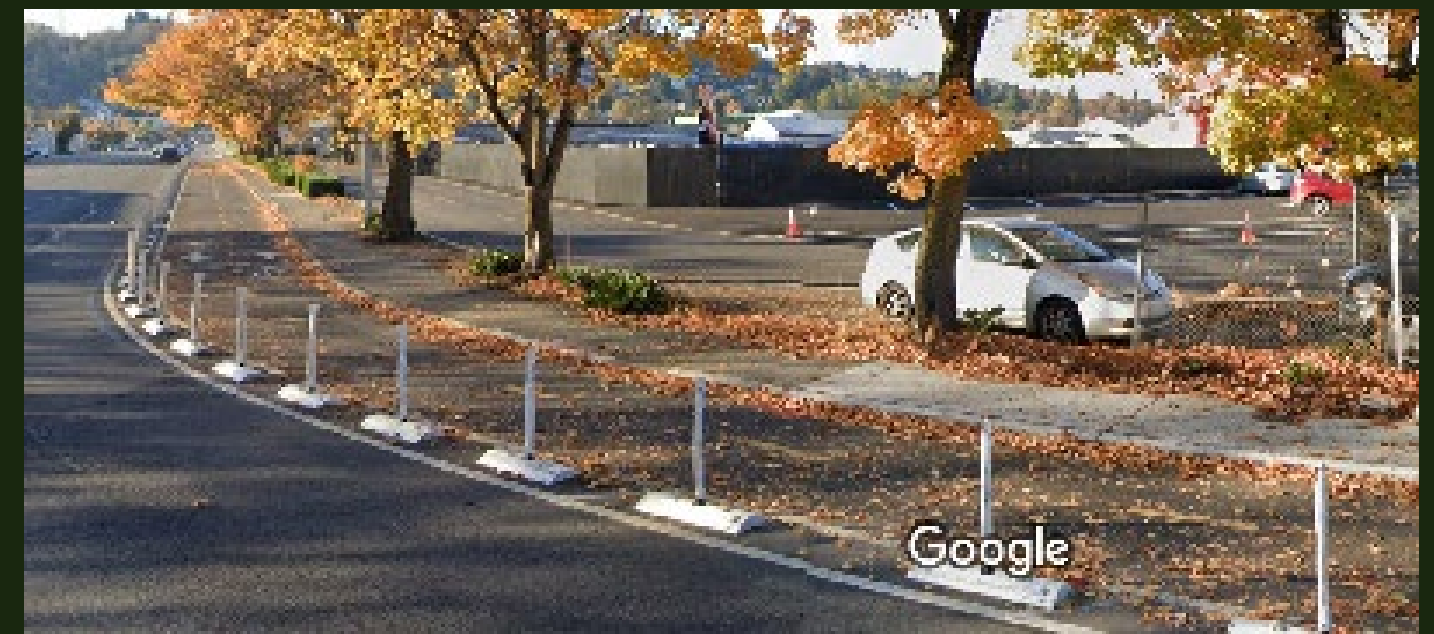
# Park Avenue North Gateway to Southport Business Center



# Lake Washington Loop Trail Logan Ave S to Rainier Ave S

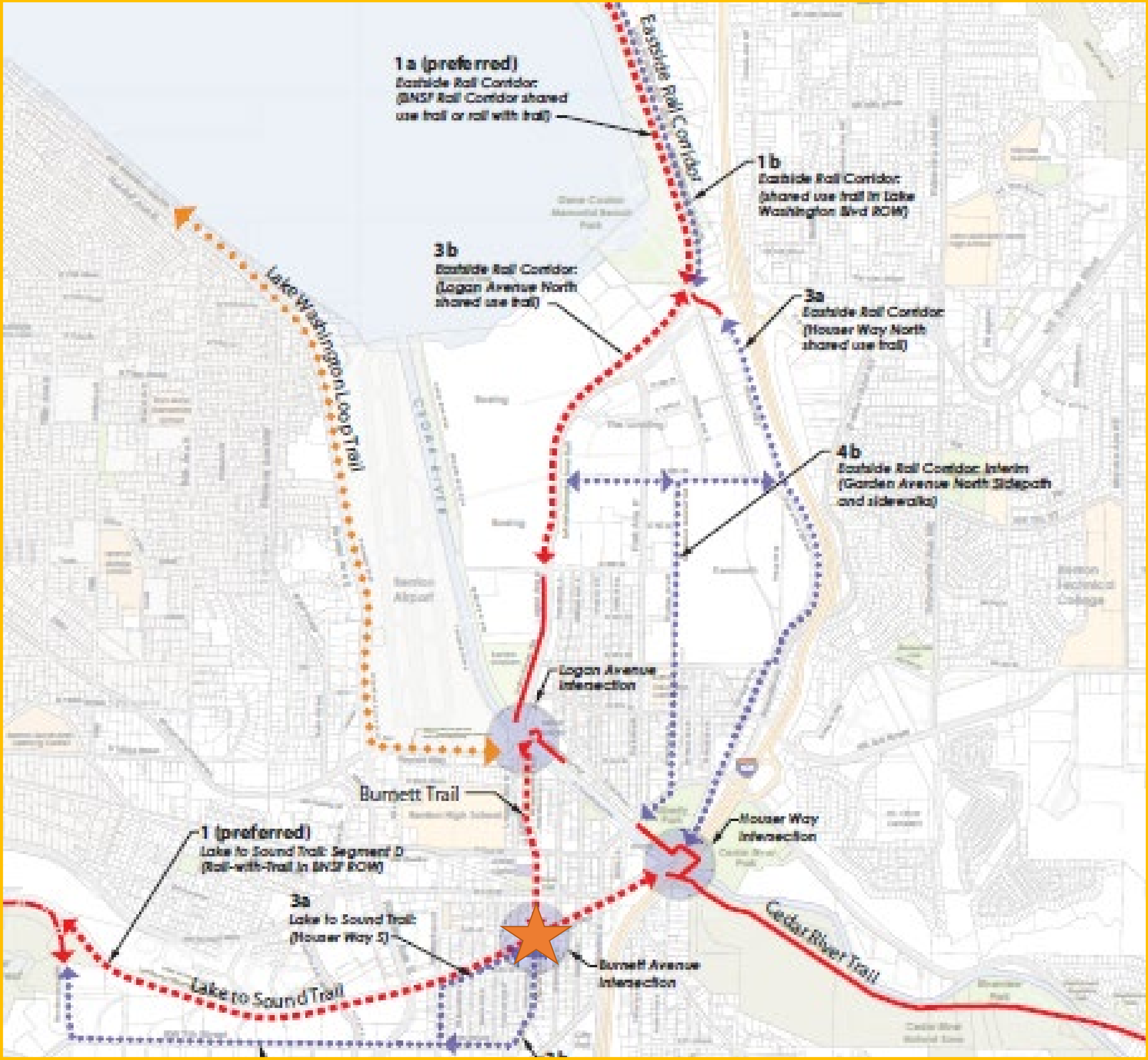
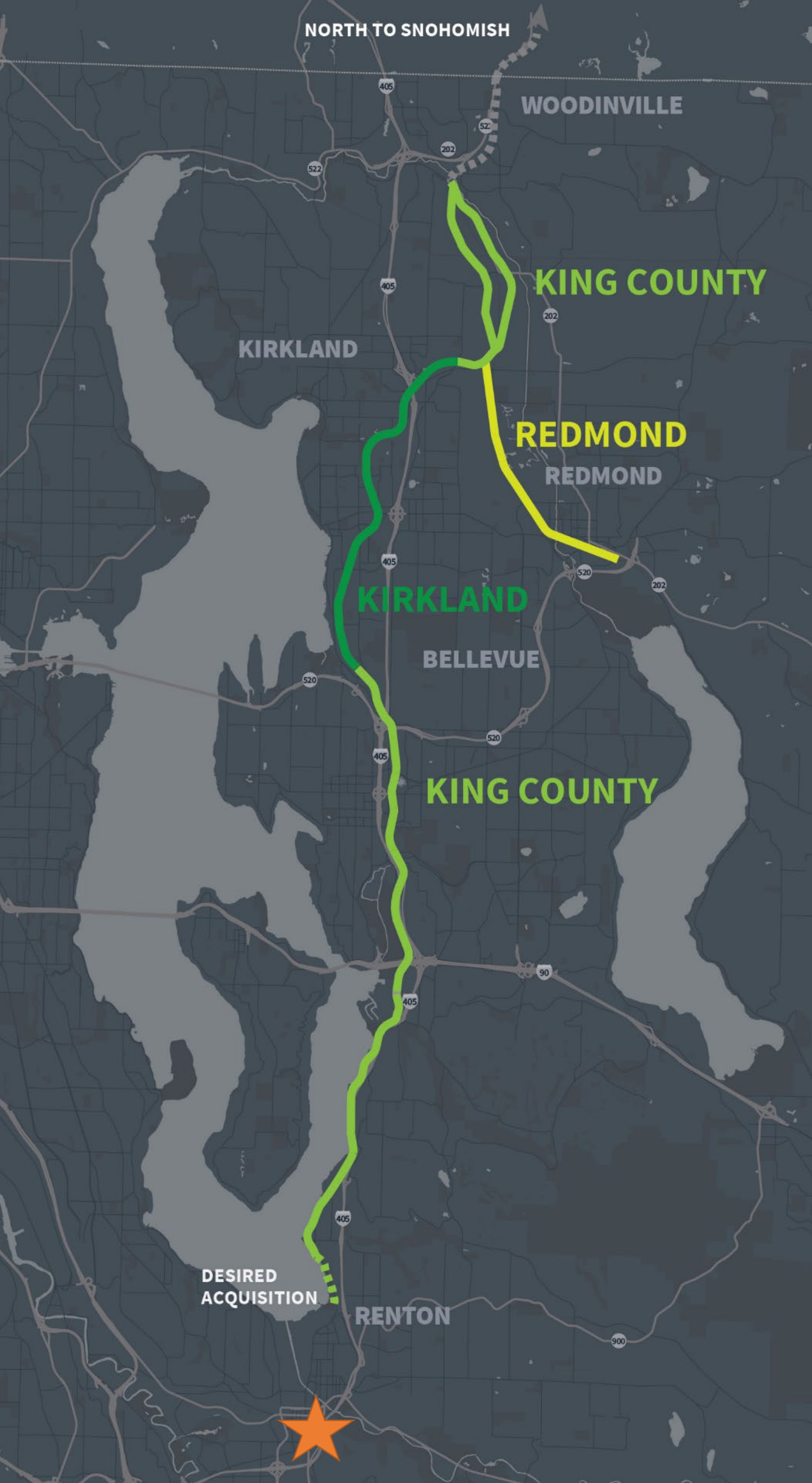


# Lake Washington Loop Trail Logan Ave S to Rainier Ave S



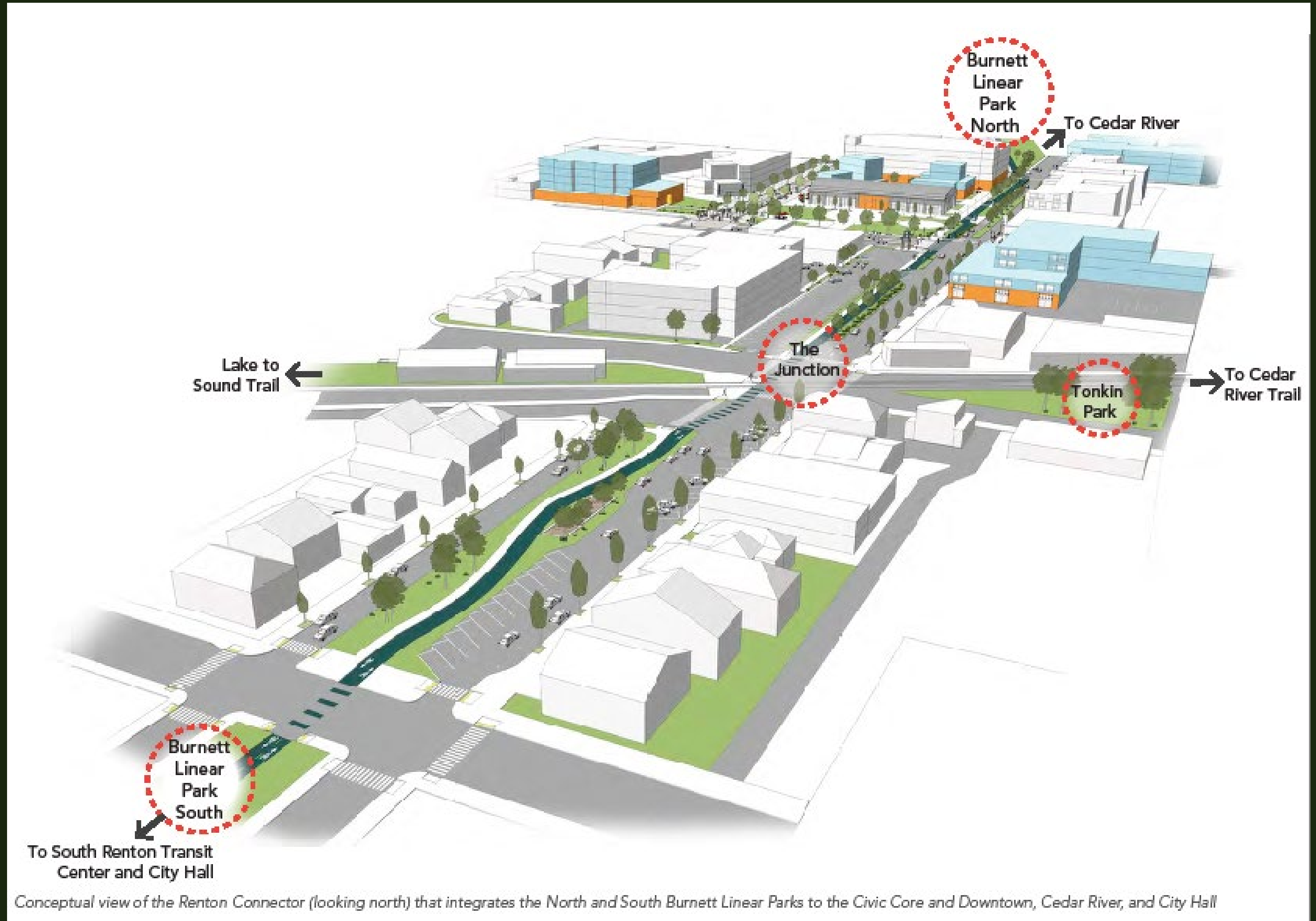
# Renton Connector

## Lake to Sound Trail to Cedar River Trail



# Renton Connector

## Lake to Sound Trail to Cedar River Trail

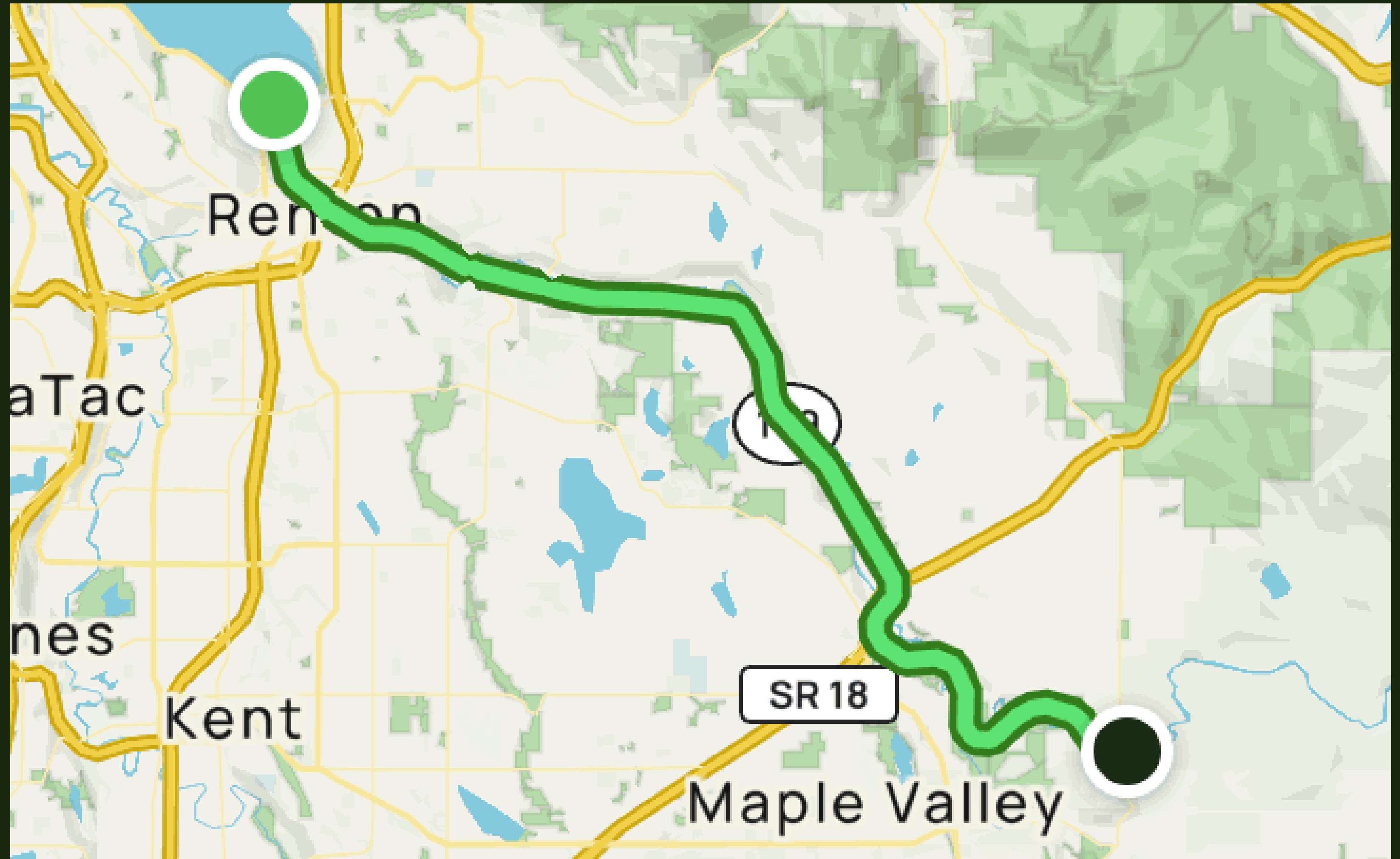


Conceptual view of the Renton Connector (looking north) that integrates the North and South Burnett Linear Parks to the Civic Core and Downtown, Cedar River, and City Hall

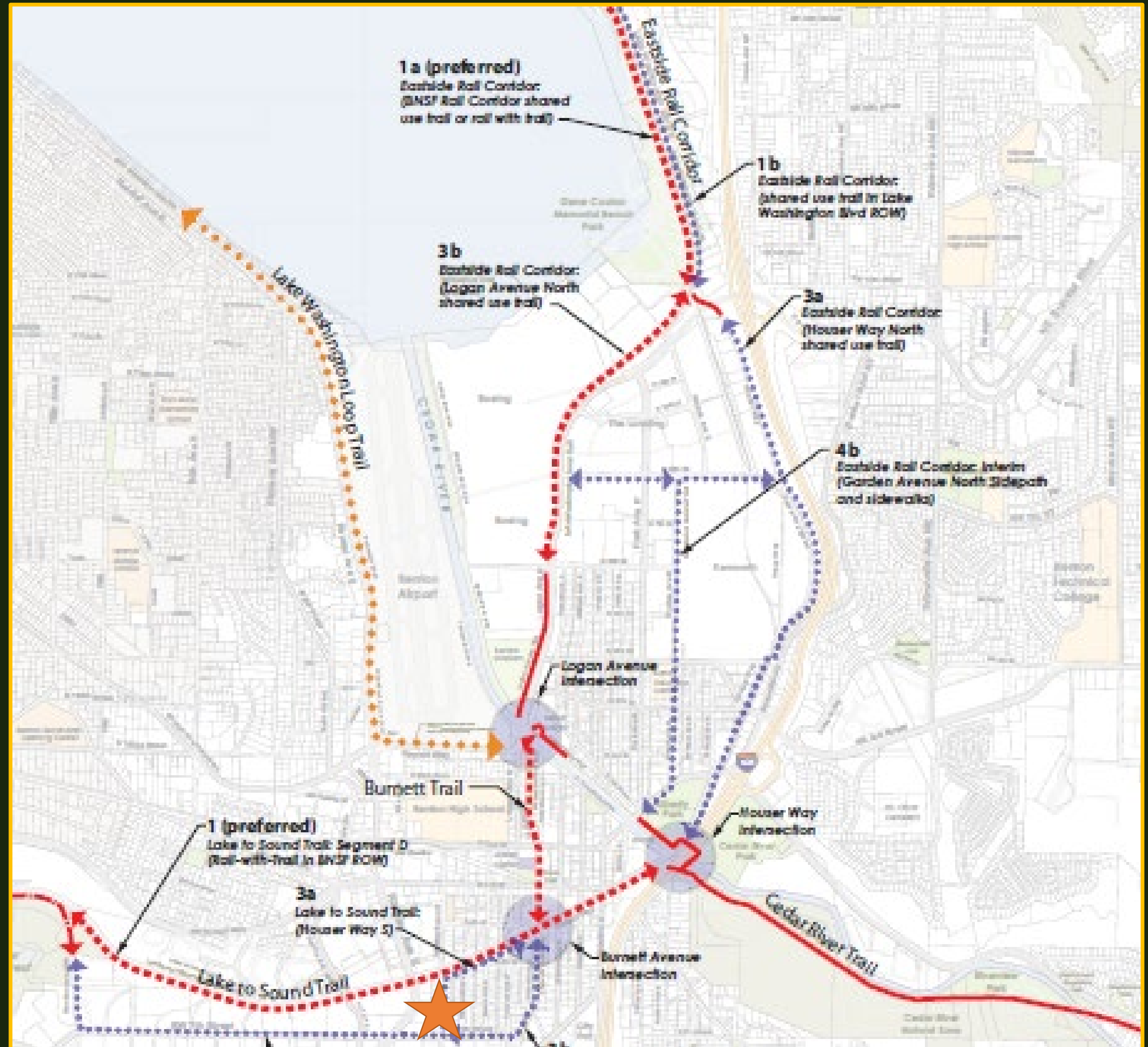


# Renton Connector

## Cedar River Trail – 17 miles to Maple Valley









# Lake to Sound Trail Segments 'D' and 'E' along S 7<sup>th</sup> St



# Lake to Sound Trail Segments 'D' and 'E' along S 7th St



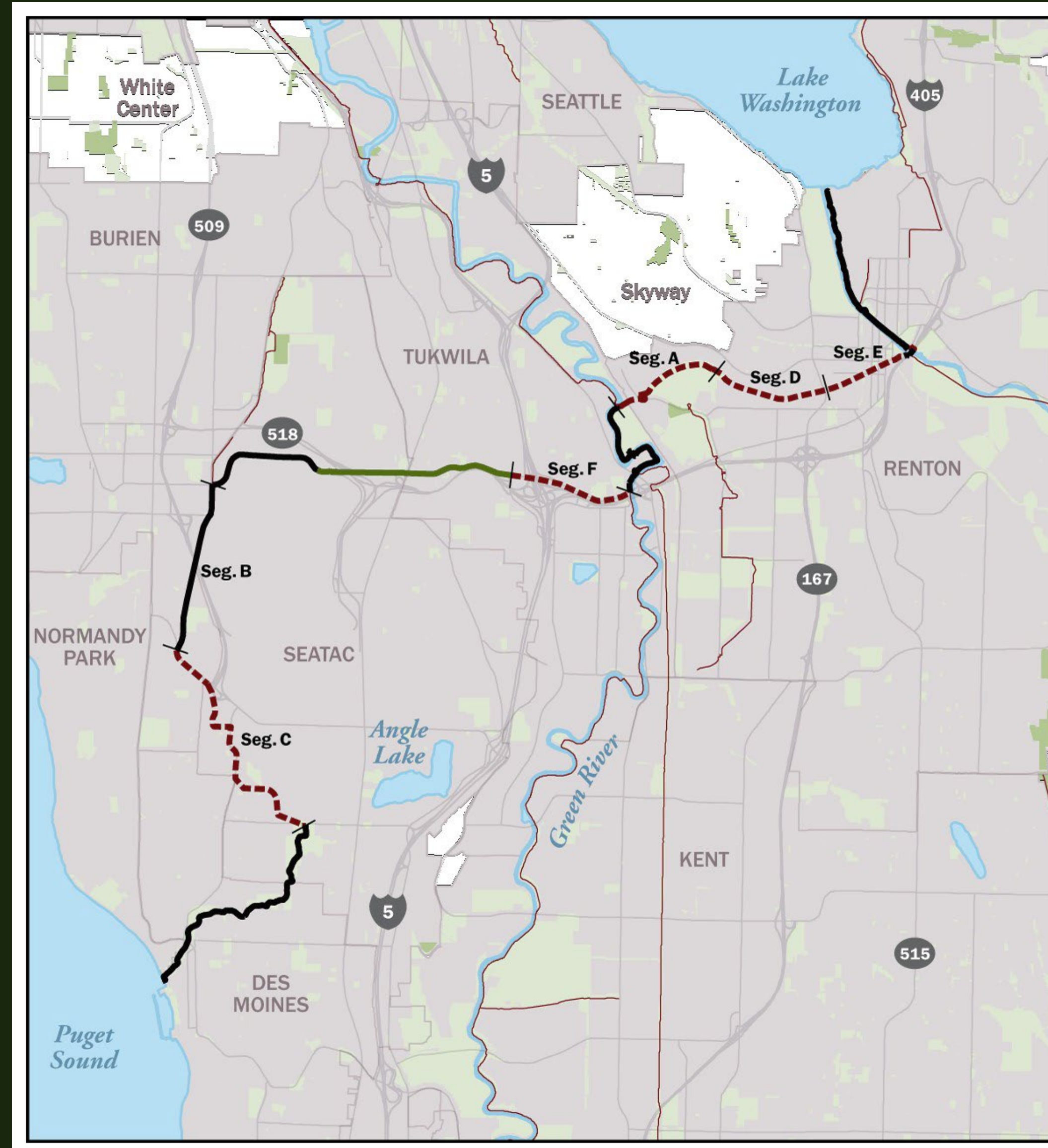
Commuter bicycle riders currently use SW 7th St / S 7th St as the preferred east-west route through the southern part of downtown Renton. The Green River Trail and the Springbrook Trail are in close proximity with Fort Dent Park and Waterworks Gardens. The Black River Forest access road is scheduled to be advertised for construction in 2019 for the extension of the Lake to Sound Trail.

-  Existing Access Road / Pedestrian Path
-  Existing Trail
-  Signalized Intersection Improvements
-  Multi-use Path
-  Future Sound Transit Station
-  Existing Park and Ride



S 7TH ST CORRIDOR IMPROVEMENTS

# Lake to Sound Trail Renton to Des Moines



END

# Cross-Cultural Arts Project





# RAC Event Scoping

## Timeline:

- 3Q 2023 – RAC consensus on event/activity to be resourced and implemented
- 3Q-4Q23 – Secure all financial and staffing resource commitments to implement activities
- 4Q23- 2Q24 – Complete all supporting planning and coordination actions in support of implementation
- May – July 2024 – Implement events/activities

## Proposed Activities:

- Part 1: Site Visits to Highlight Key/Illustrative Eastrail Locations and Projects
- Part 2: RAC-Convened Assembly of the Eastrail Community
- Part 3: Public Celebration and Activation of Eastrail
- Part 4: Video Documenting the Collaborative Eastrail Effort



# Eastrail Trail Cross-Cutting Issues

- Open/closed hours (including encampment management)
- Lighting
- E-bikes and scooters (single-user motorized travel modes)
  - Supporting infrastructure and amenities (e.g., electric chargers)
- Trail etiquette/user education
- Connections to local bike/pedestrian facilities and networks
- Art development and implementation (following up on the approved Guiding Principles)
- Honoring diversity/cultural norms in corridor operations/management
- Coordination of events that cross ownership boundaries
- Trail-Oriented Design - concepts, standards, tools, etc. (including “Trail Improvement/Investment District” concept)
- Corridor access from neighboring parcels
- Noise management/mitigation (esp. around special events)
- Accessibility for people with disabilities
- Technology opportunities
- Wayfinding plan development and implementation



## **Eastrail Trail Cross-Cutting Issues**

During an average trip in the Eastrail corridor a trail user will likely pass through several different Eastrail ownership sections and local jurisdictions, and thus may experience varying trail management approaches along the way. This circumstance might be illustrated by, for example, trail use rules and the availability and access to amenities. Eastrail trail owners share an interest in supporting a consistently high-quality experience for trail users throughout the corridor, which may be feasible through close collaboration among these entities and with trail stakeholders.

The list below encompasses issues that affect or are otherwise relevant to the design, management, and operation of the Eastrail trail in areas of the corridor that span multiple ownerships and jurisdictions. Such issues may therefore benefit from collaborative review and consideration by RAC member entities as they continue to develop and maintain the Eastrail trail. The issues on this list are not prioritized. This list may be updated or revised on an ongoing basis.

- Open/closed hours (including encampment management)
- Lighting
- E-bikes and scooters (single-user motorized travel modes)
  - Supporting infrastructure and amenities (e.g., electric chargers)
- Trail etiquette/user education
- Connections to local bike/pedestrian facilities and networks
- Art development and implementation (following up on the approved Guiding Principles)
- Honoring diversity/cultural norms in corridor operations/management
- Coordination of events that cross ownership boundaries
- Trail-Oriented Design - concepts, standards, tools, etc. (including “Trail Improvement/Investment District” concept)
- Corridor access from neighboring parcels
- Noise management/mitigation (esp. around special events)
- Accessibility for people with disabilities
- Technology opportunities
- Wayfinding plan development and implementation

## **Eastrail Regional Advisory Council 2024 Event/Activity(ies) Scoping Co-Chair Proposal for Discussion at October 19, 2023 RAC Quarterly Meeting**

### **Purpose**

- Highlight successes and progress achieved by the RAC/Eastrail community toward the multi-purpose (trail, transit, and utilities) vision for the corridor
- Thank and recognize key contributors from the community
- Build strategy and support for tackling major near- and long-term corridor development challenges

### **Timeline**

3Q 2023 – RAC consensus on event/activity to be resourced and implemented

3Q-4Q23 – Secure all financial and staffing resource commitments to implement activities

4Q23- 3Q24 – Complete all supporting planning and coordination actions in support of implementation

May – September 2024 – Implement events/activities

### **Proposed Events/Activities Encompassed**

#### **Part 1: Site Visits to Highlight Key/Illustrative Eastrail Locations and Projects**

Half-day guided tour of 3-4 Eastrail locations chosen to help tell the Eastrail story and illustrate partnership, progress, success, and upcoming opportunities/challenges. Potentially held on the same day as Part 2 described below

#### **Audience/Desired Participants:**

- Project implementers
- Business and community leaders
- Local electeds
- State legislators
- Federal delegation reps
- Entities with similar interests in multi-purpose corridor development
- Media
- [more]

#### **Resources Required:**

- Staffing to plan and implement activities

- Transportation
- Access to desired locations
- Supporting informational materials about the specific projects/areas
- Eastrail SWAG if desired
- Boxed lunches?
- [more]

## Part 2: RAC-Convened Assembly of the Eastrail Community

Half day facilitated gathering of Eastrail corridor developers, stakeholders, advocates, and supporters, with several sessions focused on elements described below. Potentially held on the same day as Part 1 described above.

- Sharing the **vision** for the Eastrail corridor – multiple uses, mobility, equity, climate change, economic opportunity, quality of life, utilities, ... *Who are the people and communities the corridor will connect? Why is it important that we are successful in delivering on the vision?*
- Extending **recognition and thanks** to those that have been particularly instrumental in securing the corridor and delivering early progress toward achieving the vision for the corridor
- Build **inspiration and energy** for future progress – e.g., invite a recognized regional/national leader in visionary collaborative projects to share perspective/lessons learned and their wisdom and ideas for how we can be successful... *What can we learn from other smart people that helps us be more effective? Can/should we think bigger /differently than we are?*
- Focus attention on our **goals and next big opportunities** for success in realizing the vision for the corridor, including securing funding and completing major projects... *What do we want to achieve in the next ten years? Twenty years? How do we achieve that? And who can help us achieve that?*

Audience/Desired Participants:

- Community leaders spanning the geographic, demographic, and cultural breadth of the corridor communities
- Business representatives
- Federal, state, and local electeds
- Leaders in the development and implementation of key actions
- Foundations whose goals/mission intersect with the vision for the Eastrail
- National corridor development thought leaders (keynote, and panelists if also desired)
- Local/regional media
- [more]

Resources Required:

- Staffing/consultant support for event planning, coordination, and implementation
- Master of Ceremonies
- Venue on or very near the Eastrail corridor with necessary access, parking, etc.
- Venue reservation/rental and related supporting facility expenditures; venue must support all the features of the desired program: assembly space, audio-visual, food service, etc.
- Refreshments
- Guest speaker fee/per diem
- Recognition memento, SWAG
- Supporting communications
- [more]

[Co-sponsorship/underwriting funder opportunities?]

**Part 3: Public Celebration and Activation of Eastrail**

An evening and/or weekend event outdoors on the Eastrail that welcomes the community to enjoy the corridor. May be implemented on a different day from Parts 1 and 2 described above.

- Opening remarks by local/Eastrail/community leaders
- Art
- Activities (e.g., parade?)
- Music
- Organized trail rides
- Food trucks
- [more]

Audience/Desired Participants:

- Eastrail leaders
- Community-based organizations
- General public
- [more]

Resources Required:

- Staffing to plan and implement activities
- Venue on or very near the Eastrail corridor with necessary access, parking, etc.
- Supporting communications for community awareness and welcoming
- Master of Ceremonies
- [more]

[Co-sponsorship/underwriting funder opportunities?]

#### **Part 4: [Short?] Video Documenting the Collaborative Eastrail Effort**

A professionally produced (5-7 minute?) video that highlights important aspects of the completed and future development of the corridor and the community that has undertaken, supports, and is welcome to enjoy the benefits of this effort. This video may include, e.g., corridor imagery, event vignettes, drone/aerial footage, interviews of leaders and community members, and/or other. It may also be produced to include or made available to the public with recorded elements of activities from Parts 1-3 of this proposal.

Comms/videography/social media staff from RAC member entities would lead and provide support for producing this video.