

# 2024 King County Comprehensive Plan

King County Council Local Services and Land Use Committee  
March 7, 2024

# Logistics

- Website: [Kingcounty.gov/CouncilCompPlan](https://kingcounty.gov/CouncilCompPlan)
- Email: [CouncilCompPlan@kingcounty.gov](mailto:CouncilCompPlan@kingcounty.gov)

2

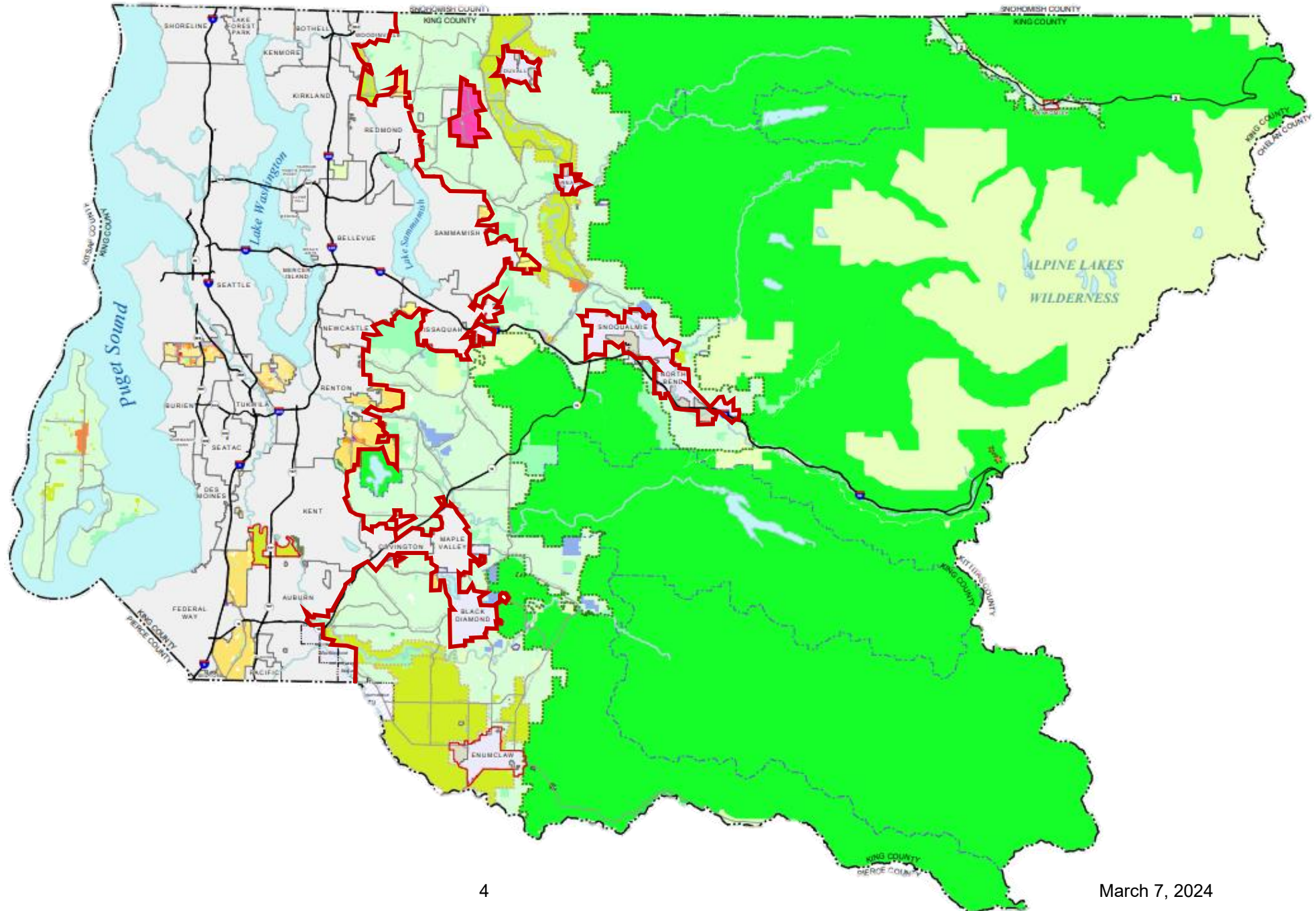
# Background - Comprehensive Plan

- Guiding policy document for land use and development in unincorporated King County
- Required by the state Growth Management Act
- 2024 Comprehensive Plan is a 10-year update
  - Substantive changes to policies and implementing regulations
  - Consistency with state law changes since last periodic update
  - Underlying data updates
- Snoqualmie Valley/NE King County Subarea Plan
- Four-to-One Program updates

3

# King County's Urban Growth Boundary

ESU Additional Materials



# 2024 Plan - Council Schedule



# 2024 Plan - Council Schedule (cont)

6

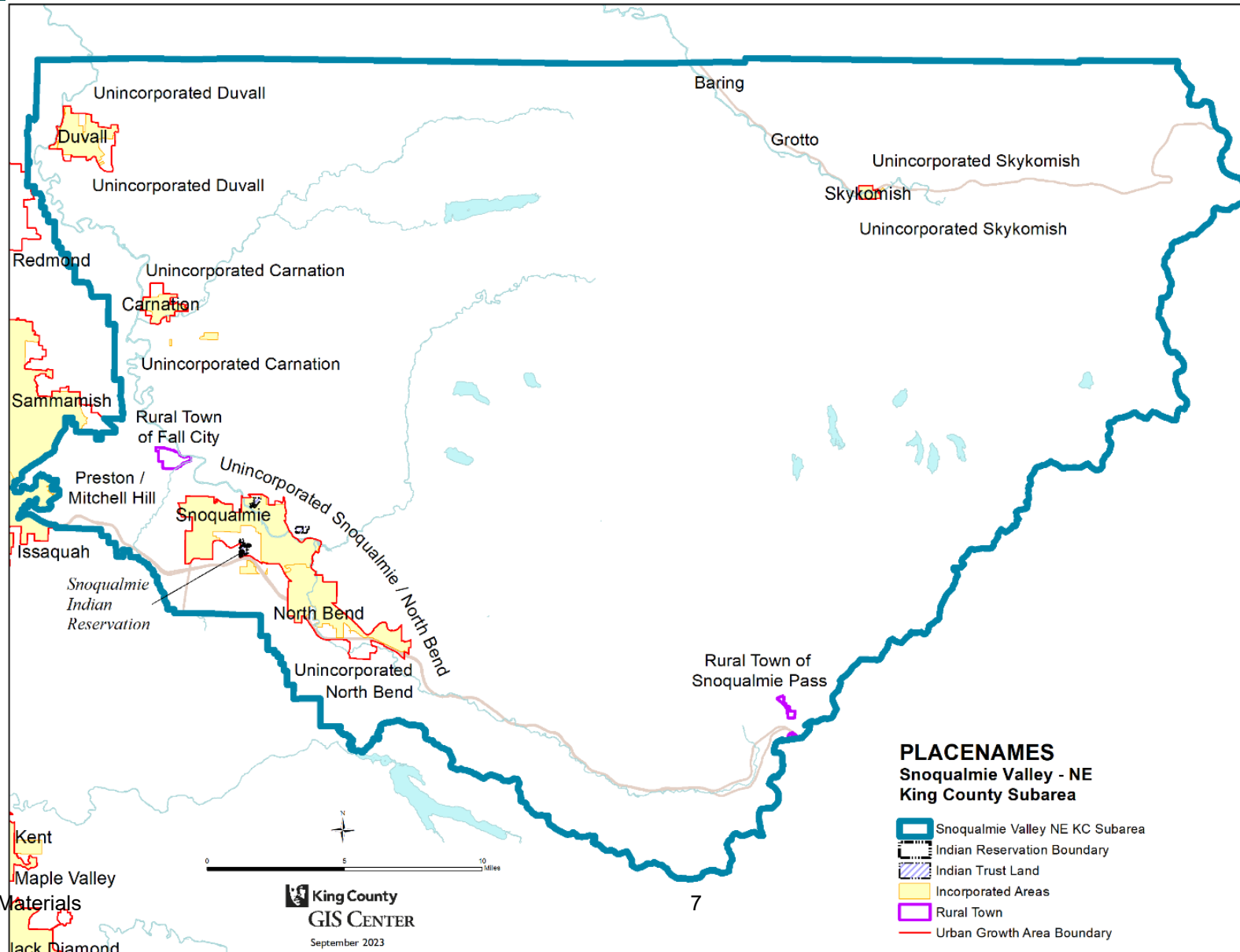
LSLU date	Topics	Date	Amendment Dates
<b>Jan 17</b>	<ul style="list-style-type: none"> <li>- Overview, Schedule, Process</li> <li>- SVNE Subarea Plan</li> <li>- VMI Subarea Plan</li> <li>- Chapter 11: Subarea Planning</li> <li>- Map Amendments</li> <li>- Equity Analysis Summary</li> </ul>	<b>March 29</b>	- Amendment concepts for striker due from all Councilmembers (except critical area regulations)
		<b>April 5</b>	- Final Striker Direction due (except critical area regulations)
<b>Feb 7</b>	<ul style="list-style-type: none"> <li>- Chapter 1: Regional Planning</li> <li>- Chapter 2: Urban Communities</li> <li>- Growth Target Appendix</li> </ul>	<b>April 12</b>	- Amendment concepts for striker due from all Councilmembers - critical area regulations
		<b>April 19</b>	- Final Striker Direction due - critical area regulations
<b>Feb 21</b>	<ul style="list-style-type: none"> <li>- Chapter 5: Environment</li> <li>- Chapter 6: Shorelines</li> </ul>	<b>May 14</b>	Striking Amendment Released
		<b>May 15</b>	Brief Striking Amendment
<b>Mar 6</b>	<ul style="list-style-type: none"> <li>- Chapter 4: Housing and Human Services</li> <li>- Housing Appendix</li> </ul>	<b>May 31</b>	Public Amendments Released
<b>Mar 20</b>	- Chapter 3: Rural and Resource Lands	<b>June 5</b>	Committee Action
<b>Apr 3</b>	<ul style="list-style-type: none"> <li>- Chapter 7: Parks &amp; RTNR</li> <li>- Chapter 8: Transportation &amp; TNR</li> </ul>		
<b>Apr 17 9am</b>	<ul style="list-style-type: none"> <li>- Chapter 9: Facilities</li> <li>- Capital Facilities Plan Appendix</li> <li>- Chapter 10: Economic Development</li> <li>- Chapter 12: Implementation</li> <li>- Development Regulations</li> <li>- Four-to-One Program</li> </ul>		

King County Council  
2024 Comprehensive Plan

LSLU Additional Materials

# Snoqualmie Valley/Northeast King County Subarea

7



7

LSLU Additional Materials

March 7, 2024

# SVNE Subarea Plan – Community Vision

Snoqualmie Valley/Northeast King County are characterized by strong rural communities with distinct cultures and histories, where people and businesses are thriving, the natural environment and agricultural lands are conserved and protected, farms are preserved, the community is resilient to climate change, and services and programs are accessible to residents in a way that preserves each community’s unique rural character.



# SVNE Subarea Plan – Guiding Principles

- a. Conserve and protect forests, rivers, lakes, and open spaces.
- b. Conserve and protect the subarea’s working farmlands by protecting agricultural lands and supporting local farmers, farmworkers, ranchers, and growers.
- c. Encourage and protect a range of housing choices for all.
- d. Promote economically and environmentally sustainable local businesses and organizations across the subarea and support the business districts of the Fall City and Snoqualmie Pass Rural Towns.
- e. Preserve cultural and historic resources and landmarks.
- f. Enhance the relationship between King County and the Tribes by centering Tribal needs, land stewardship, and treaty rights.
- g. Preserve the unique rural character across the subarea in commercial areas and residential communities in a manner that increases quality of life for residents.
- h. Support transit and transportation options, including active transportation and recreation, consistent with rural levels of service.
- i. Support programs, organizations, and services for youths, seniors, veterans, and others to build community connections.
- j. Promote communities that are resilient to natural hazards and climate change, and support communities affected by related disasters.

# SVNE Subarea - Policies

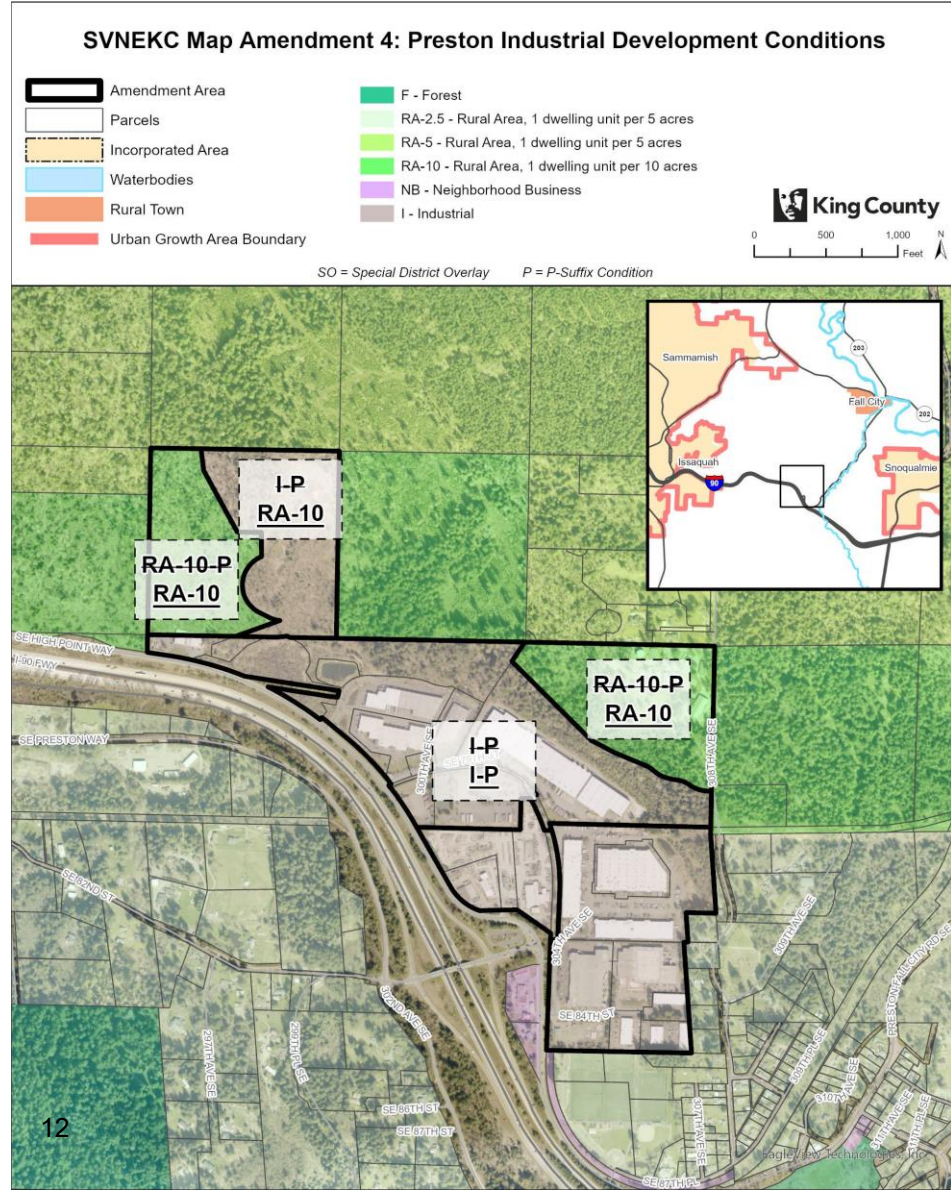
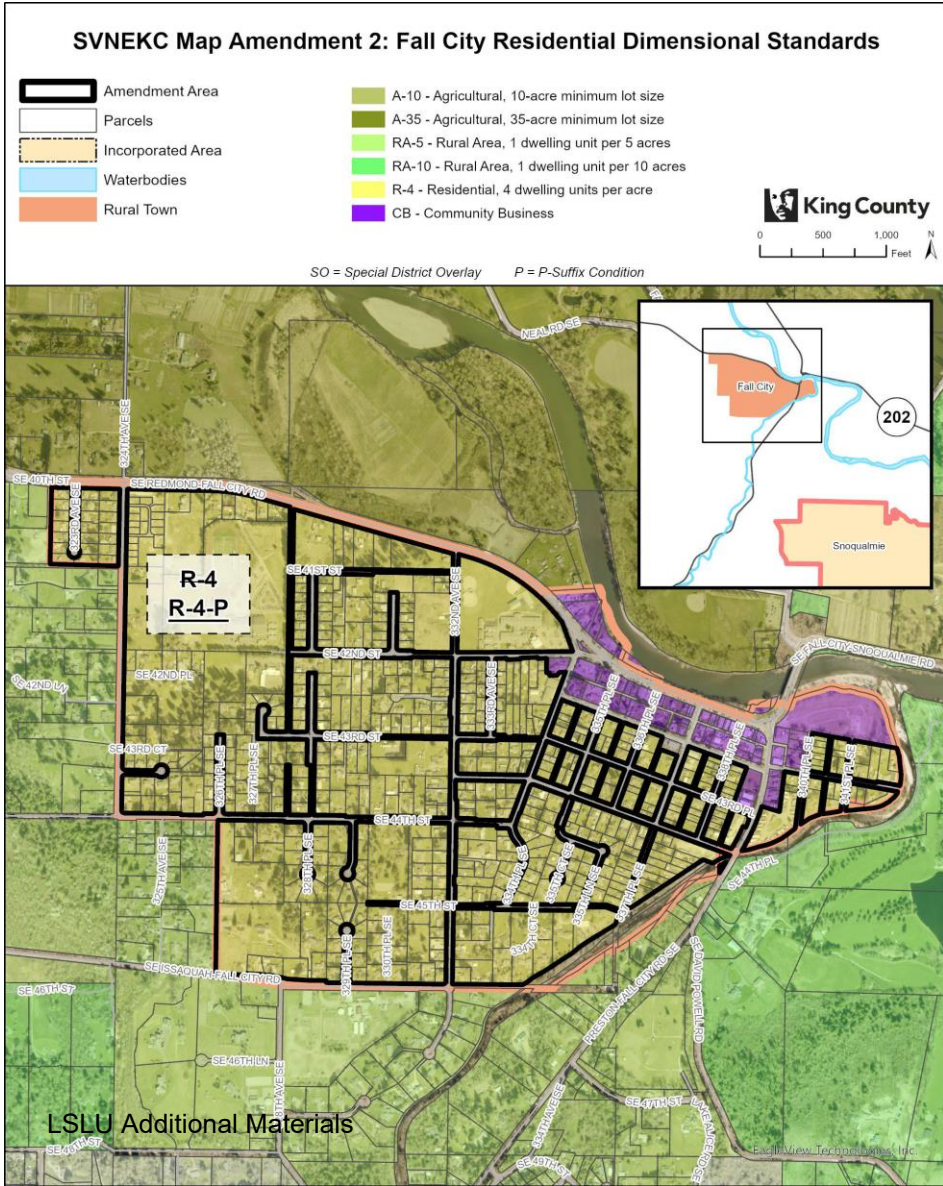
- Land Use
- Housing
- Health and Human Services
- Environment
- Parks and Open Space
- Transportation
- Services and Utilities
- Economic Development

10

# SVNE Subarea Plan - Implementation

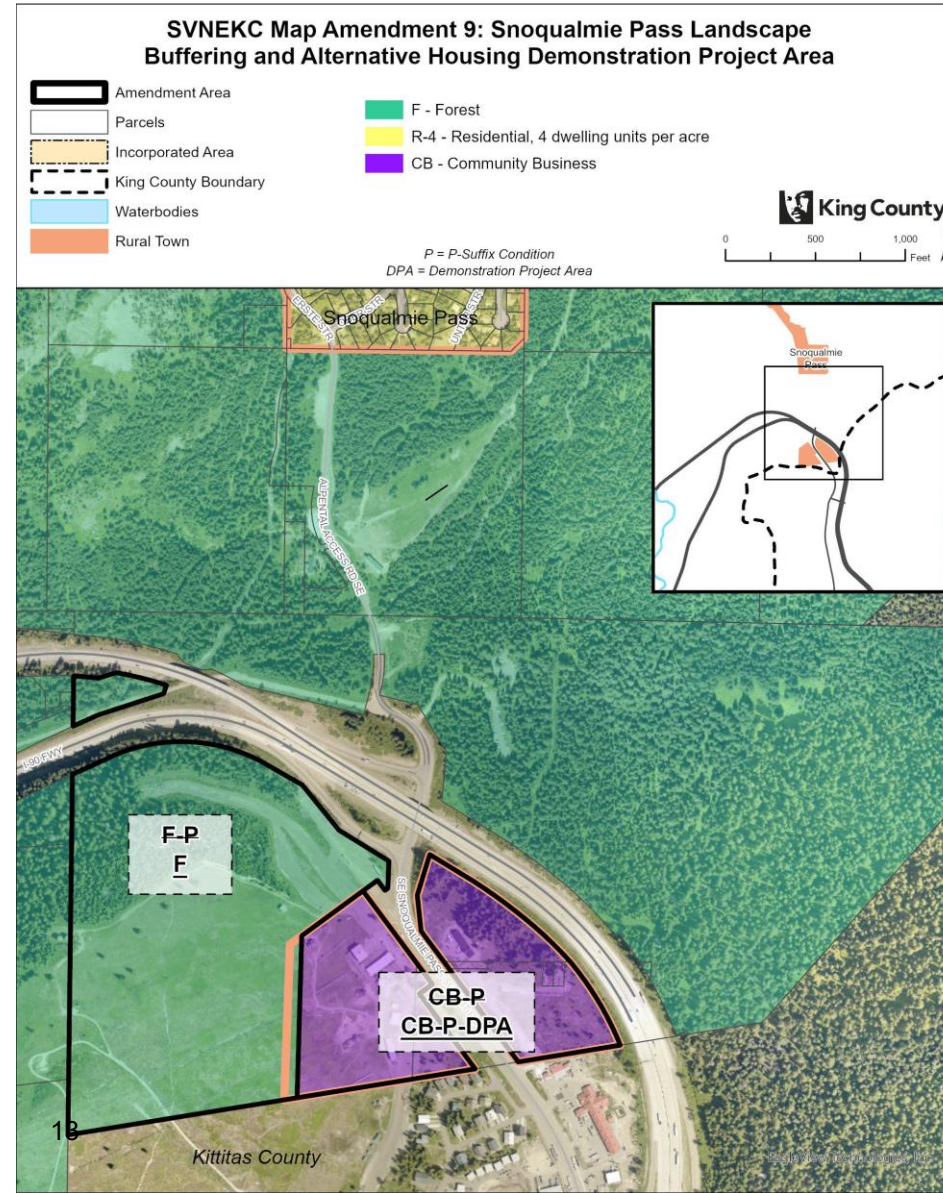
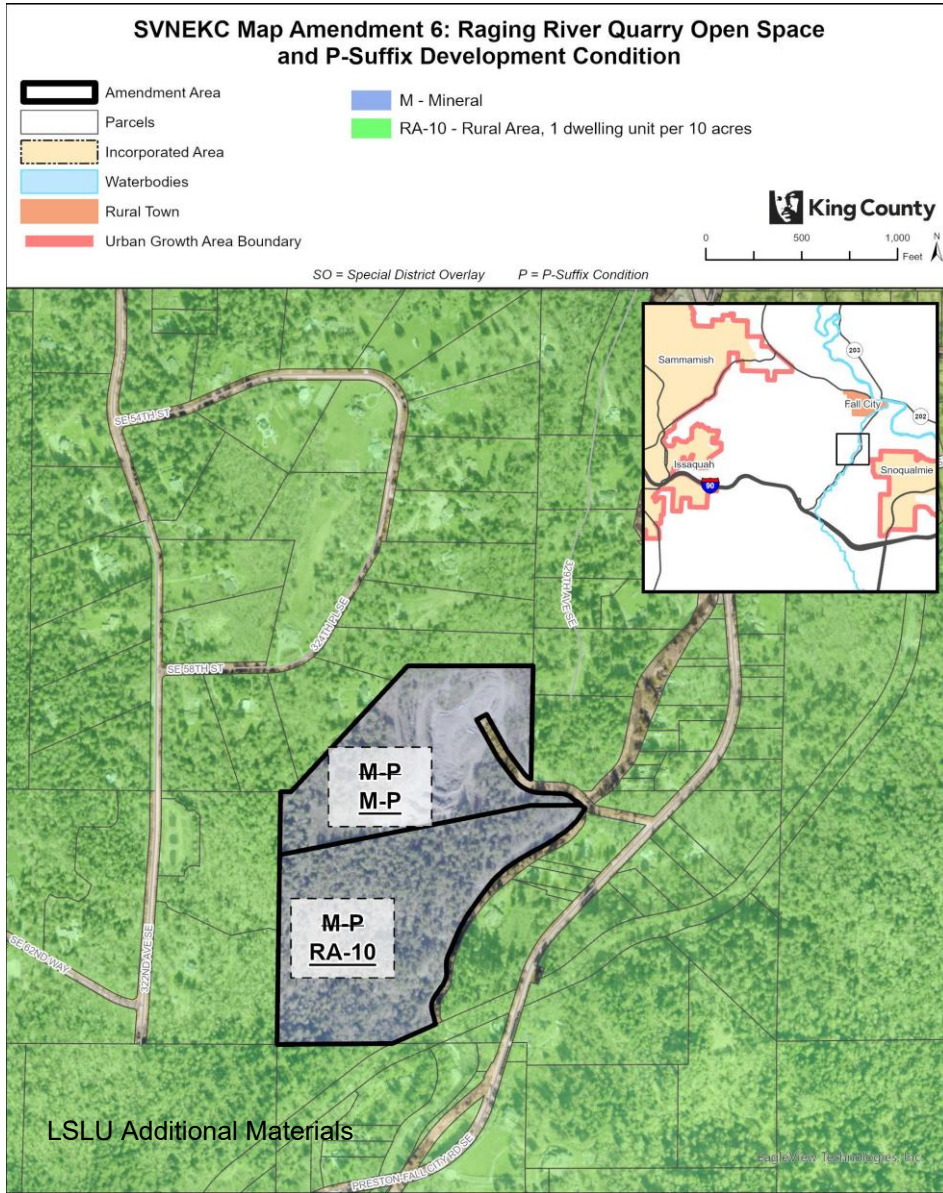
- Map Amendments
- Transportation Studies
- Community Needs Lists
- Performance Measures

# SVNE Subarea Plan - Map Amendments



# SVNE Subarea Plan - Map Amendments

13



# Logistics

- Website: [Kingcounty.gov/CouncilCompPlan](https://kingcounty.gov/CouncilCompPlan)
- Email: [CouncilCompPlan@kingcounty.gov](mailto:CouncilCompPlan@kingcounty.gov)

14