



**King County**

**Metropolitan King County Council  
Local Services and Land Use Committee**

**STAFF REPORT**

<b>Agenda Item:</b>	3, 4, 5, 6	<b>Name:</b>	Erin Auzins
<b>Proposed No.:</b>	2023-0438 2023-0439 2023-0440 2024-B0022	<b>Date:</b>	February 8, 2024

**SUBJECT**

A discussion of the 2024 King County Comprehensive Plan. At tonight's meeting, Council staff will provide a short briefing, with the remaining time dedicated to public comment on the 2024 Comprehensive Plan.

**SUMMARY**

The 2024 King County Comprehensive Plan (2024 KCCP) is the first opportunity where the entire plan will be open for review and update since 2016. Additionally, it will also serve as the Growth Management Act (GMA) mandated periodic review and update. The Executive transmitted the Executive's Recommended 2024 KCCP to the Council on December 7, 2023, and the Council has referred the 2024 KCCP to the Local Services and Land Use (LSLU) Committee.

Review of the 2024 KCCP will be led by the LSLU Committee Chair, consistent with past updates, and will include Committee briefings on the substance of the Executive's Recommended 2024 KCCP, analysis of each substantive change by policy staff, public outreach, development of a LSLU Chair's striking amendment, line amendments by LSLU Committee members, and a vote in LSLU in June 2024. Full Council adoption is expected in December 2024, after a formal public hearing on November 19, 2024.

At tonight's meeting, staff will be available to answer questions beginning at 6:00pm. The meeting will start at 6:30pm, with a short briefing by Council staff, and then time for public comment on the 2024 KCCP.

## **BACKGROUND**

**King County Comprehensive Planning.** The King County Comprehensive Plan (KCCP) is the guiding policy document for land use and development regulations in unincorporated King County. The King County Code (K.C.C.) allows for amendments to the KCCP on an annual, midpoint, or ten-year update schedule.<sup>1</sup> The ten-year update is on the same timeline as the GMA mandated review and update. The entire KCCP, and associated implementing regulations, is open for substantive revision, subject to limitations in the GMA, VISION 2050, the Countywide Planning Policies, KCCP policies, and the K.C.C.

**Scoping Motion.** K.C.C. 20.18.060 requires the County to approve a scope of work for the ten-year KCCP update, known as the scoping motion. The scoping motion establishes the baseline issues that the County proposes to consider in the development of the 2024 KCCP; additional issues beyond what is in the scope of work may also be addressed in the ten-year update. The Council approved the scoping motion, as well as the State Environmental Policy Act (SEPA) work program and public participation plan, as part of Motion 16142 in June 2022. The scope of work included three focus areas: Pro-Equity, Housing, and Climate Change and the Environment. It also adopted a General category to cover other required and priority items for the County.

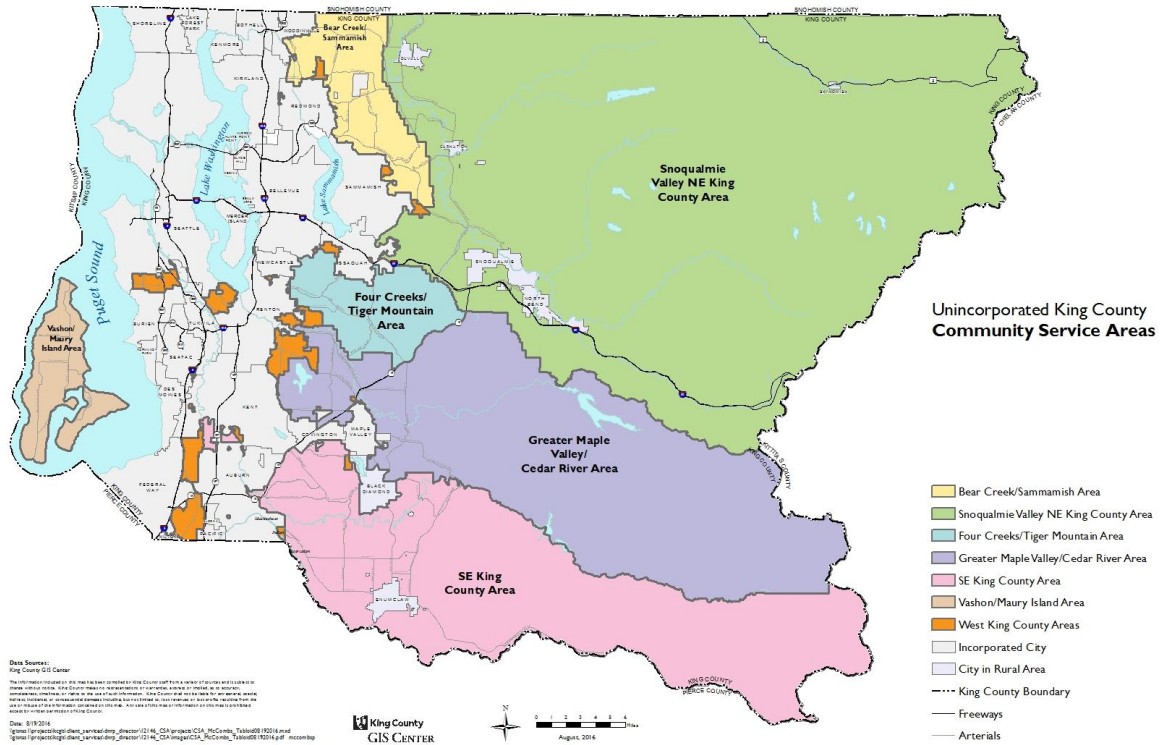
**SEPA Environmental Impact Statement.** The SEPA review for the 2024 KCCP includes an environmental impact statement (EIS), which includes alternatives analysis based on the scope of work and other potential amendment concepts. The Executive issued a Draft EIS concurrent with transmittal of the 2024 KCCP to the Council on December 7, 2023. The public comment period on the Draft EIS closed on January 31, 2024. A Final EIS will be developed based on any comments received, and the Committee-Recommended version of the 2024 KCCP and any new amendment concepts to be considered by the Council before final adoption. Amendment concepts raised after publication of the Draft EIS must be within the scope of the alternatives analyzed in the Draft EIS, otherwise a supplemental EIS may be required.

**Subarea Planning.** As part of the 2016 KCCP, the Council included Workplan Action #1, Implementation of the Community Service Area (CSA) Subarea Planning Program. As part of this Workplan Action item, the County will conduct subarea planning using the geography of the six rural CSAs, and the five remaining large urban unincorporated potential annexation areas (PAAs), as shown in the map in Chapter 11 of the 2024 KCCP and below in Figure 1.

---

<sup>1</sup> K.C.C. 20.18.030, including changes proposed with the 2024 KCCP.

**Figure 1. Community Service Areas Map**



Since the implementation of the Subarea Planning Program in 2016, three subarea plans have been adopted: Vashon-Maury Island in 2017, Skyway-West Hill in 2022, and North Highline in 2022. The Executive's proposed Snoqualmie Valley/NE King County (SVNE) subarea plan will be taken up concurrently with the 2024 KCCP and the remaining subarea plans will later be taken up in the following order: Greater Maple Valley/Cedar River CSA, Fairwood PAA, Bear Creek/Sammamish CSA, Southeast King County CSA, Four Creeks/Tiger Mountain CSA, East Renton PAA, and Federal Way PAA.

*2020 Changes to the Subarea Planning Program.* As part of the 2020 KCCP, policy and code changes were made regarding the Subarea Planning Program. Generally, the changes required that subarea plans: be developed based on an established scope of work, use equity impact tools and resources in plan development, have more robust community engagement, and be monitored through performance measures and evaluation. K.C.C. 2.16.055.B. requires the Department of Local Services (DLS), in coordination with the regional planning unit and the Councilmember office representing the geography, to manage the CSA subarea planning program, and requires that each subarea plan:

- Be consistent with the KCCP;
- Be based on a scope of work established with the community;
- Establish a long-range vision and policies that implement that vision, but that are not redundant to the KCCP;
- Establish performance metrics and monitoring;
- Use the tools and resources of the Executive's Office of Equity and Racial and Social Justice (OERSJ) throughout development, implementation and monitoring,

including for community engagement and incorporating the findings of an equity impact analysis;

- Review existing policies (primarily from Chapter 11) of the KCCP and retain/transfer those that are still applicable;
- Review land use designations and zoning classifications, including special district overlays (SDOs) and property-specific (P-suffix) development conditions, and amend as necessary; and
- Incorporate the community needs list required to be developed simultaneously.

*Community Needs List.* As part of the 2020 KCCP, the Council established a Community Needs List (CNL) for each of the CSA geographies in the subarea planning program. Each CNL is intended to be consistent with its respective subarea plan by identifying potential services, programs, facilities, or improvements that respond to community-identified needs. Development of the CNLs, including community engagement, must use tools from the County's Office of Equity and Racial and Social Justice (formerly OESJ). CNLs are required to be submitted with transmittal of the applicable subarea plan, and with each county budget, via ordinance.

**Council Review Process.** LSLU will meet on the 1<sup>st</sup> and 3<sup>rd</sup> Wednesdays of each month from January through June 2024, and is expected to make a recommendation to the full Council at its June 5, 2024 committee meeting. Each committee meeting will be dedicated to specific chapters of the 2024 KCCP. This approach allows for detailed review of each chapter but will not provide time in Committee to revisit most issues discussed in earlier meetings. The Snoqualmie Valley/NE King County (SVNE) Subarea Plan will be briefed at the beginning of the Committee review process, and then heard with the striking amendment at the end of the Committee review process.

The schedule takes into account a number of factors, including the EIS process; LSLU Committee meeting dates; public comments; lead time to analyze and produce amendments; minimum noticing timeframes; and the state deadline for adoption. The schedule assumes one meeting solely for briefing the striking amendment and one meeting to vote on the underlying ordinance, the striking amendment, and all line amendments.

Special LSLU Evening Meetings. The Committee is expected to hold five special evening LSLU meetings on the 2024 KCCP and Draft EIS. The dates, locations, and the focus of each special evening meeting are provided in the following table. At this time, staff is anticipating that the King County Council Chambers in Seattle and the Covington City Hall are the only venues that can accommodate remote participation and testimony. If KCTV determines that remote participation and livestreaming capabilities are feasible at other locations, these options will be provided.

<b>Meeting Date/Time</b>	<b>Location</b>	<b>Focus</b>
Thursday, January 18, 2024 Doors open: 6:00pm Meeting starts: 6:30pm	County Council Chambers 516 Third Ave, Room 1200 Seattle	Hearing on Draft EIS
Thursday, February 8, 2024 Doors open: 6:00pm Meeting starts: 6:30pm	Covington City Hall 16720 SE 271st Street, Suite 100 Covington	KCCP Overview
Thursday, March 7, 2024 Doors open: 6:00pm Meeting starts: 6:30pm	Riverview Educational Service Center 15510 1st Ave NE Duvall	Snoqualmie Valley / NE King County Subarea Plan
Thursday, April 4, 2024 Doors open: 5:00pm Meeting starts: 5:30pm	Vashon Center for the Arts 19600 Vashon Hwy SW Vashon	Map changes, Shoreline code changes
Thursday, May 16, 2024 Doors open: 6:00pm Meeting starts: 6:30pm	Skyway VFW 7421 S 126th St Seattle	Committee Striking Amendment

These locations were chosen based on the location of significant map amendments and issues of interest, and to provide geographic distribution of the meetings. The first meeting on January 18th was primarily to hear verbal public comment on the Draft EIS. Comments on the KCCP will be accepted at each evening meeting. The final evening meeting on May 16th will be focused on the Committee Chair's striking amendment.

Evening meetings are expected to include: a welcome/open house at the beginning, followed by Councilmember remarks, a staff presentation, and public comment. The majority of the meeting will be dedicated to receiving public comment. Materials to share information and obtain written comment will be prepared and provided at the meeting.

Chair Striking Amendment. The Committee Chair is expected to sponsor and lead development of the Committee striking amendment. Policy staff will prepare analysis and potential options that will be distributed to all Committee members' offices for their consideration, in advance of the amendment request deadline.

Regular briefings for district staff will be provided, and Policy staff will be available to brief Councilmembers individually.

Amendment deadlines. The review schedule, Attachment 1 to this staff report, includes the established amendment deadlines. The attached schedule also includes the amendment deadlines for full Council.

Key Committee review dates include:

Date	Deadline
<b>March 29</b>	Amendment requests for Striking Amendment due – Except for Critical Area Regulations
<b>April 5</b>	Substantive direction deadline for Striking Amendment – Except for Critical Area Regulations
<b>April 12</b>	Amendment requests for Striking Amendment due – Critical Area Regulations
<b>April 19</b>	Substantive direction deadline for Striking Amendment – Critical Area Regulations
<b>May 14</b>	Striking Amendment released
<b>May 22</b>	Line amendment direction due
<b>May 31</b>	Public line amendments released

## **ANALYSIS**

**Executive Transmittal.** The Executive transmittal of the 2024 KCCP follows 18 months of work by the Executive, including, in part, public issuance of an early concepts document, an interbranch review by Council staff at two stages, a Public Review Draft with a public comment period, and an interdepartmental review of the plan by Executive staff. There are 3 proposed ordinances in the Executive’s transmittal to the Council.

- 1) Proposed Ordinance 2023-0440 would make changes to development and other implementing regulations and adopt the 2024 King County Comprehensive Plan, as well as the associated appendices (Housing, Transportation, Capital Facilities and Utilities, Regional Trails, Growth Targets). The transmittal also includes the following:
  - Changes to the Vashon-Maury Island Subarea Plan and associated zoning map conditions;
  - Proposed land use designation and zoning map amendments;
  - I-207 matrices and Plain Language Summary;
  - Equity Analysis; and
  - Other supporting materials (Public Participation Summary, area zoning and land use studies, code studies, and best available science summary<sup>2</sup>).
  
- 2) Proposed Ordinance 2023-0439 would adopt the Snoqualmie Valley/Northeast King County Subarea Plan with subarea-specific development regulations and map amendments, as well as a Fall City residential study.
  
- 3) Proposed Ordinance 2023-0438 would adopt updated Countywide Planning Policies.

---

<sup>2</sup> The required best available science and critical area regulations update will be transmitted to the Council on March 1, 2024, for the Council to incorporate into the LSLU striking amendment.

## **ATTACHMENTS**

1. Council's Review Schedule for 2024 KCCP, updated January 29, 2024

## **INVITED**

- Lauren Smith, Director of Regional Planning Unit, Office of Performance, Strategy and Budget
- Chris Jensen, Comprehensive Planning Manager, Office of Performance, Strategy and Budget

## **LINKS**

**All materials of the transmitted 2024 KCCP, as well as additional information about the Council's review of the proposal, can be found at:**

<https://kingcounty.gov/en/dept/council/governance-leadership/county-council/topics-of-interest/comprehensive-plan>

### **Proposed Ordinance 2023-0440 – 2024 King County Comprehensive Plan**

- Attachment A – 2024 King County Comprehensive Plan
- Attachment B – Capital Facilities and Utilities
- Attachment C – Housing Needs Assessment
- Attachment D – Transportation
- Attachment E – Transportation Needs Report
- Attachment F – Regional Trail Needs Report
- Attachment G – Growth Targets and the Urban Growth Area
- Attachment H – Vashon-Maury Island Subarea Plan Amendments
- Attachment I – Land Use and Zoning Map Amendments

### **Supporting Materials**

- Transmittal Letter
- Fiscal Note
- Summary of Proposed Ordinance
- Policy I-207 Analysis Matrix
- Equity Analysis
- Area Land Use and Zoning Studies
- Middle Housing Code Study
- Vashon-Maury Island P-Suffix Conditions Report
- Vashon Rural Town Affordable Housing Special District Overlay Final Evaluation
- Update on Best Available Science Critical Area Ordinance Review
- Public Participation Summary

### **Proposed Ordinance 2023-0439 – Snoqualmie Valley/Northeast King County Subarea Plan**

- Attachment A – Supplemental Changes to the Comprehensive Plan
- Attachment B – Snoqualmie Valley/Northeast King County Subarea Plan
- Attachment C – Land Use and Zoning Map Amendments
- Attachment D – Fall City Moratorium Report

#### Supporting Materials

- Transmittal Letter
- Fiscal Note
- Summary of Proposed Ordinance
- Policy I-207 Analysis Matrix

#### **Proposed Ordinance 2023-0438 – Countywide Planning Policy Update**

- Attachment A – GMPC Motion 23-4 Relating to the Four-to-One Program

#### Supporting Materials

- Transmittal Letter
- Fiscal Note



## 2024 King County Comprehensive Plan

Proposed Ordinance 2023-0438, 2023-0439, 2023-0440

### King County Council Committee Review and Adoption Schedule As of January 29, 2024 - subject to change

Date	Event
December 7, 2023	Executive Recommended Plan Transmitted
December 12	Referral to Local Services and Land Use (LSLU) Committee
January 17 9:30am Council Chambers	<b>LSLU Committee - Briefing 1</b> <ul style="list-style-type: none"> <li>- Overview, Schedule, Process</li> <li>- Snoqualmie Valley/Northeast King County Subarea Plan</li> <li>- Vashon-Maury Island Subarea Plan changes</li> <li>- Chapter 11: Community Service Area Subarea Planning</li> <li>- Map Amendments</li> <li>- Equity Analysis Summary</li> <li>- Equity Work Group Presentation</li> </ul> <i>Opportunity for Public Comment - Remote and In-Person</i>
January 18 6:30pm Council Chambers	<b>LSLU Special Committee Meeting</b> <ul style="list-style-type: none"> <li>- Public Hearing on Draft Environmental Impact Statement</li> <li>- Public Comment on Executive's Recommended Plan</li> </ul> <i>Opportunity for Public Comment - Remote and In-Person</i>
February 7 9:30am Council Chambers	<b>LSLU Committee - Briefing 2</b> <ul style="list-style-type: none"> <li>- Chapter 1: Regional Growth Management Planning</li> <li>- Chapter 2: Urban Communities</li> <li>- Growth Targets and the Urban Growth Area Appendix</li> </ul> <i>Opportunity for Public Comment - Remote and In-Person</i>
February 8 6:30pm Covington City Hall	<b>LSLU Special Committee Meeting</b> <ul style="list-style-type: none"> <li>- Public Comment on Executive's Recommended Plan</li> </ul> <i>Opportunity for Public Comment - Remote and In-Person</i>
February 21 9:30am Council Chambers	<b>LSLU Committee - Briefing 3</b> <ul style="list-style-type: none"> <li>- Chapter 5: Environment</li> <li>- Chapter 6: Shorelines</li> </ul> <i>Opportunity for Public Comment - Remote and In-Person</i>
March 6 9:30am Council Chambers  Joint Meeting with Health and Human Services Committee	<b>LSLU Committee - Briefing 4</b> <ul style="list-style-type: none"> <li>- Chapter 4: Housing and Human Services</li> <li>- Housing Needs Assessment Appendix</li> </ul> <i>Opportunity for Public Comment - Remote and In-Person</i>
March 7 6:30pm Riverview Educational Center, Duvall	<b>LSLU Special Committee Meeting</b> <ul style="list-style-type: none"> <li>- Public Comment on Executive's Recommended Plan</li> </ul> <i>Opportunity for Public Comment - In-Person only</i>

Color key:

Gray: Executive actions

Blue: Public Hearing or Action dates

White: Regular Committee Meetings

Red: Amendment deadlines

Yellow: Special Committee Meetings

Green: SEPA actions

Date	Event
<b>March 20</b> <b>9:30am</b> <b>Council Chambers</b>	<b>LSLU Committee - Briefing 5</b> - Chapter 3: Rural Areas and Natural Resource Lands  <i>Opportunity for Public Comment - Remote and In-Person</i>
<b>March 29</b>	Amendment requests for Striking Amendment due - Except for Critical Area Regulations
<b>April 3</b> <b>9:30am</b> <b>Council Chambers</b>	<b>LSLU Committee - Briefing 6</b> - Chapter 7: Parks, Open Space, and Cultural Resources - Regional Trails Needs Report Appendix - Chapter 8: Transportation - Transportation Appendix - Transportation Needs Report Appendix  <i>Opportunity for Public Comment - Remote and In-Person</i>
<b>April 4</b> <b>5:30pm</b> <b>Vashon Center for the Arts</b>	<b>LSLU Special Committee Meeting</b> - Public Comment on Executive's Recommended Plan  <i>Opportunity for Public Comment - In-Person only</i>
<b>April 5</b>	Substantive direction deadline for Striking Amendment - Except for Critical Area Regulations
<b>April 12</b>	Amendment requests for Striking Amendment due - Critical Area Regulations
<b>April 17</b> <b>9:30am</b> <b>Council Chambers</b>	<b>LSLU Committee - Briefing 7</b> - Chapter 9: Services, Facilities, and Utilities - Capital Facilities and Utilities Appendix - Chapter 10: Economic Development  <i>Opportunity for Public Comment - Remote and In-Person</i>
<b>April 19</b>	Substantive direction deadline for Striking Amendment - Critical Area Regulations
<b>May 1</b> <b>9:30am</b> <b>Council Chambers</b>	<b>LSLU Committee - Briefing 8</b> - Chapter 12: Implementation, Amendments, and Evaluation - Development Regulations - Four-to-One Program  <i>Opportunity for Public Comment - Remote and In-Person</i>
<b>May 14</b>	Striking Amendment released
<b>May 15</b> <b>9:30am</b> <b>Council Chambers</b>	<b>LSLU Committee Briefing</b> - Briefing on the Striking Amendment  <i>Opportunity for Public Comment - Remote and In-Person</i>
<b>May 16</b> <b>6:30pm</b> <b>Skyway VFW</b>	<b>LSLU Special Committee Meeting</b> - Public Comment on Committee Striking Amendment  <i>Opportunity for Public Comment - In-Person only</i>
<b>May 22</b>	Line amendment direction due
<b>May 31</b>	Public Line Amendments released
<b>June 5</b> <b>9:30am</b> <b>Council Chambers</b>	<b>Local Services and Land Use Committee</b> - Review and consideration of striking and line amendments - <b>Vote</b> on Committee recommendation  <i>Opportunity for Public Comment - Remote and In-Person</i>
<b>June 14</b>	<b>Council amendment concept deadline</b> for FEIS and public hearing notice
<b>June 21</b>	Substitute Ordinance, Public Hearing Notice concepts, to Exec for FEIS

Color key:

Gray: Executive actions

Blue: Public Hearing or Action dates

White: Regular Committee Meetings

Red: Amendment deadlines

Yellow: Special Committee Meetings

Green: SEPA actions

Date	Event
<b>September 19 to ~Thanksgiving (November 28)</b>	Budget Standdown
<b>October 14 to 18 October 21 to 25</b>	Public Hearing Notice Prepared by Council staff Public Hearing Notice Issued
<b>October 4</b>	Substantive direction needed on Striking Amendment
<b>October 28</b>	Striking Amendment distributed to Councilmembers
<b>November 1</b>	Line amendment direction due
<b>November 12</b>	Public Amendments released
<b>November 6 November 6 to 13</b>	FEIS Issued - last possible date for hearing on November 19 7 day waiting period for FEIS
<b>November 19 1:30pm Council Chambers</b>	<b>Public Hearing at full Council</b> <i>Opportunity for Public Testimony - Remote and In-Person</i>
<b>December 3 1:30pm Council Chambers</b>	<b>Possible vote at full Council</b> <ul style="list-style-type: none"> <li>• Consideration of amendments</li> <li>• <b>Vote</b> on final adoption of proposed 2022 King County Comprehensive Plan Update</li> </ul>
<b>December 10 1:30pm Council Chambers</b>	<b>Back up vote if 1-week courtesy delay</b>

For more information on the Council's Review of the 2024 Comprehensive Plan, please visit the website: <https://kingcounty.gov/CouncilCompPlan>.

Color key:

Gray: Executive actions

Blue: Public Hearing or Action dates

White: Regular Committee Meetings

Red: Amendment deadlines

Yellow: Special Committee Meetings

Green: SEPA actions