

2024 King County Comprehensive Plan

King County Council Local Services and Land Use Committee
February 8, 2024

Logistics

- Website: [Kingcounty.gov/CouncilCompPlan](https://kingcounty.gov/CouncilCompPlan)
- Email: CouncilCompPlan@kingcounty.gov

2

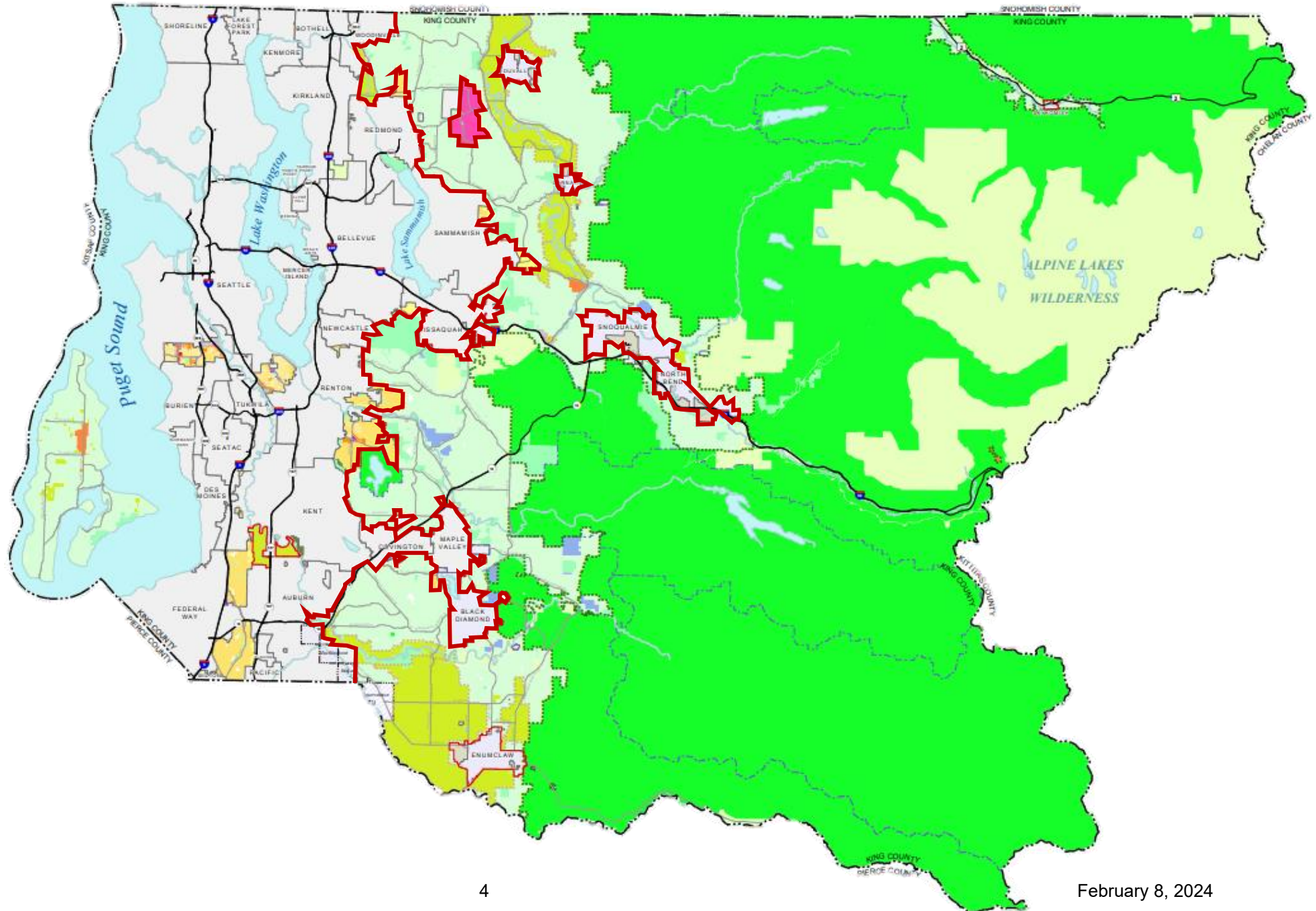
Background - Comprehensive Plan

- Guiding policy document for land use and development in unincorporated King County
- Required by the state Growth Management Act
- 2024 Comprehensive Plan is a 10-year update
 - Substantive changes to policies and implementing regulations
 - Consistency with state law changes since last periodic update
 - Underlying data updates
- Snoqualmie Valley/NE King County Subarea Plan
- Four-to-One Program updates

3

King County's Urban Growth Boundary

ESU Additional Materials



2024 Plan - Council Schedule



2024 Plan - Council Schedule (cont)

6
King County Council
2024 Comprehensive Plan

LSLU date	Topics	Date	Amendment Dates
Jan 17	<ul style="list-style-type: none"> - Overview, Schedule, Process - SVNE Subarea Plan - VMI Subarea Plan - Chapter 11: Subarea Planning - Map Amendments - Equity Analysis Summary 	March 29	- Amendment concepts for striker due from all Councilmembers (except critical area regulations)
		April 5	- Final Striker Direction due (except critical area regulations)
Feb 7	<ul style="list-style-type: none"> - Chapter 1: Regional Planning - Chapter 2: Urban Communities - Growth Target Appendix 	April 12	- Amendment concepts for striker due from all Councilmembers - critical area regulations
		April 19	- Final Striker Direction due - critical area regulations
Feb 21	<ul style="list-style-type: none"> - Chapter 5: Environment - Chapter 6: Shorelines 	May 14	Striking Amendment Released
Mar 6	<ul style="list-style-type: none"> - Chapter 4: Housing and Human Services - Housing Appendix 	May 15	Brief Striking Amendment
Mar 20	<ul style="list-style-type: none"> - Chapter 3: Rural and Resource Lands 	May 31	Public Amendments Released
Apr 3	<ul style="list-style-type: none"> - Chapter 7: Parks & RTNR - Chapter 8: Transportation & TNR 	June 5	Committee Action
Apr 17	<ul style="list-style-type: none"> - Chapter 9: Facilities - Capital Facilities Plan Appendix - Chapter 10: Economic Development 		
May 1	<ul style="list-style-type: none"> - Chapter 12: Implementation - Development Regulations - Four-to-One Program 		

LSLU Additional Materials

2024 Plan - Focus Areas

- Pro-Equity
- Housing
- Climate Change and the Environment

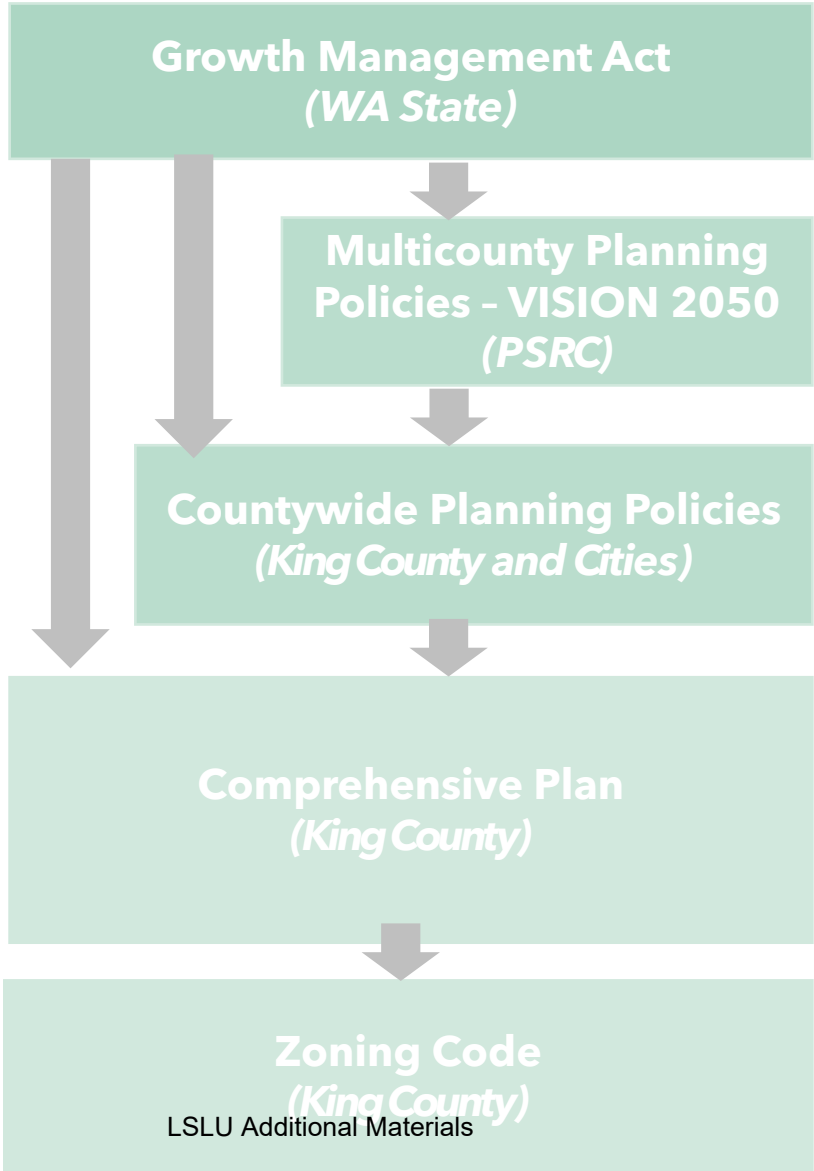
7

2024 Plan - Pro-Equity

- Review of past practices with racist outcomes
- Climate equity and frontline communities policies
- Health equity policies (open space, transportation)
- Equity impact analysis for capital facilities

8

2024 Plan - Housing



(4) Housing. ((Encourage the availability of affordable)) **Plan for and accommodate housing affordable to all economic segments of the population**

MPP-H-2 Provide a range of housing types and choices to **meet the housing needs of all income levels** and demographic groups within the region.

H-15 Increase housing choices for everyone, particularly those earning lower wages, that is co-located with, accessible to, or within a reasonable commute to major employment centers and **affordable to all income levels...**

H-126 King County shall provide opportunities for attached and detached accessory dwelling units and middle housing in urban residential areas ((and shall encourage all jurisdictions within King County to adopt provisions to allow accessory dwelling units in their communities)) **to increase housing supply affordable to all incomes.**

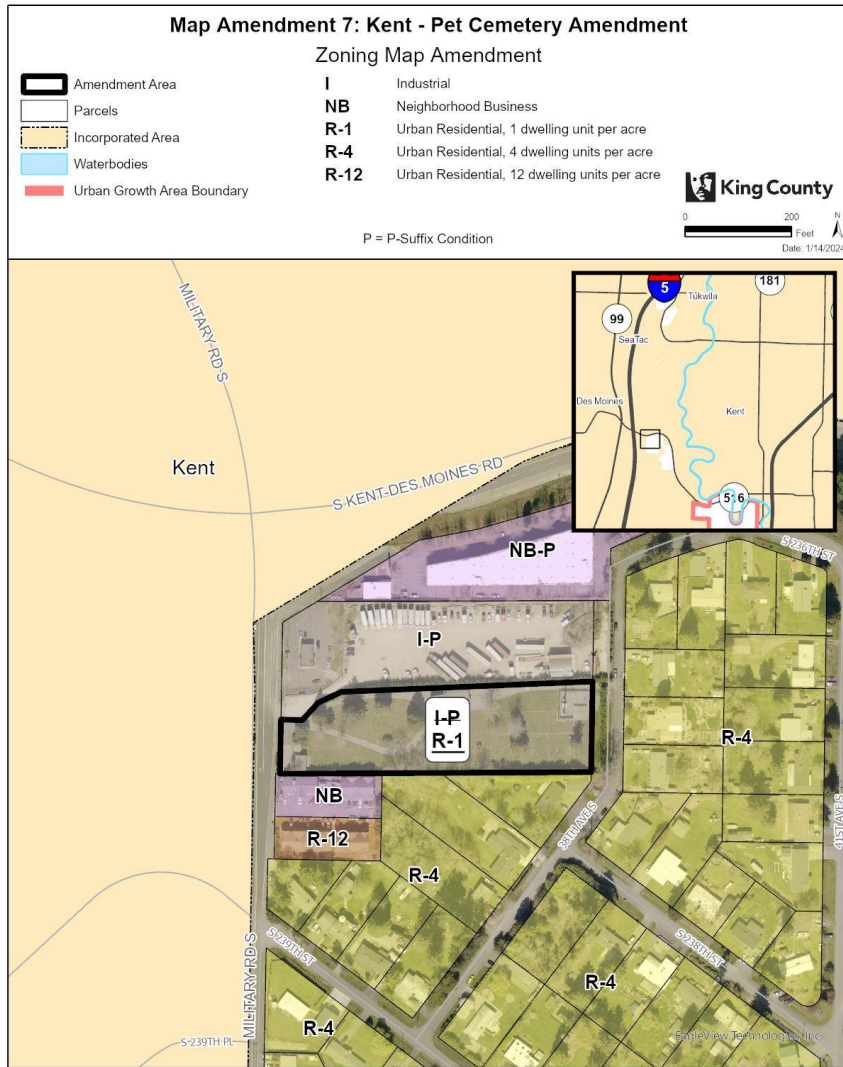
Zoning and development tools such as inclusionary housing, density incentives, MFTE and tax incentives

2024 - Climate Change and the Environment

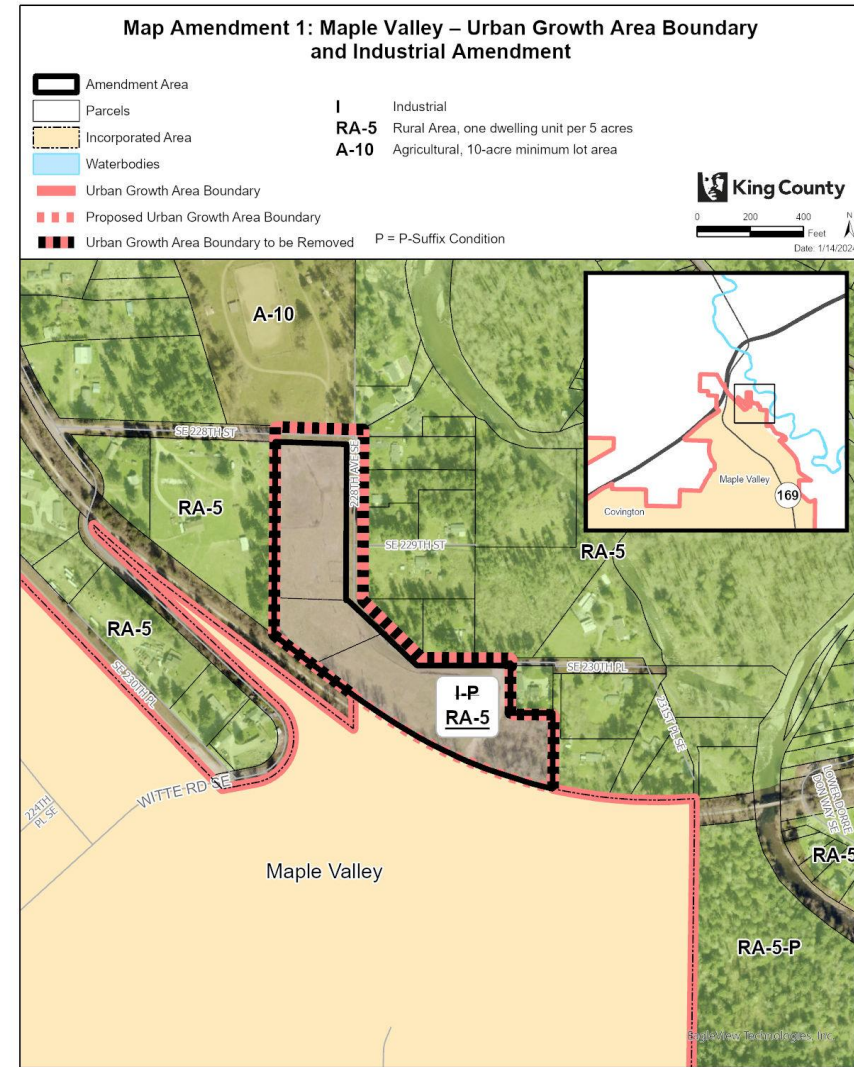
- New Guiding Principle policy
- New greenhouse gas emission reduction goals
- Critical area code updates

10

2024 Plan - Map Amendments



The information included on this map has been compiled by King County staff from a variety of sources and is subject to change without notice. King County makes no representations or warranties, express or implied, as to accuracy, completeness, timeliness, or rights to the use of such information. This document is not intended for use as a survey product. King County shall not be liable for any general, special, indirect, incidental, or consequential damages including, but not limited to, lost revenues or lost profits resulting from the use or misuse of the information contained on this map. Any sale of this map or information on this map is prohibited except by written permission of King County.
Project: LSLU Additional Materials



The information included on this map has been compiled by King County staff from a variety of sources and is subject to change without notice. King County makes no representations or warranties, express or implied, as to accuracy, completeness, timeliness, or rights to the use of such information. This document is not intended for use as a survey product. King County shall not be liable for any general, special, indirect, incidental, or consequential damages including, but not limited to, lost revenues or lost profits resulting from the use or misuse of the information contained on this map. Any sale of this map or information on this map is prohibited except by written permission of King County.
Project: MA1-PPT P. McCombs

Logistics

- Website: [Kingcounty.gov/CouncilCompPlan](https://kingcounty.gov/CouncilCompPlan)
- Email: CouncilCompPlan@kingcounty.gov

12